



# Kit, Welder Cable Carrier TRLRMP/MPXF

## Welder Cable Carrier Installation Instructions

The following instructions are intended to assist the user in the installation of the TRLRMP/MPXF welder cable carriers to the trailer frame. Please read all assembly instructions before installing the kit.

### REQUIRED TOOLS

- 3/8" ratchet w/ 9/16" socket extension
- 9/16 open end wrench
- 25/64" Drill Bit
- Tape Measure

### PARTS

Verify that all parts are accounted for. See Figure 1 and Table 1.

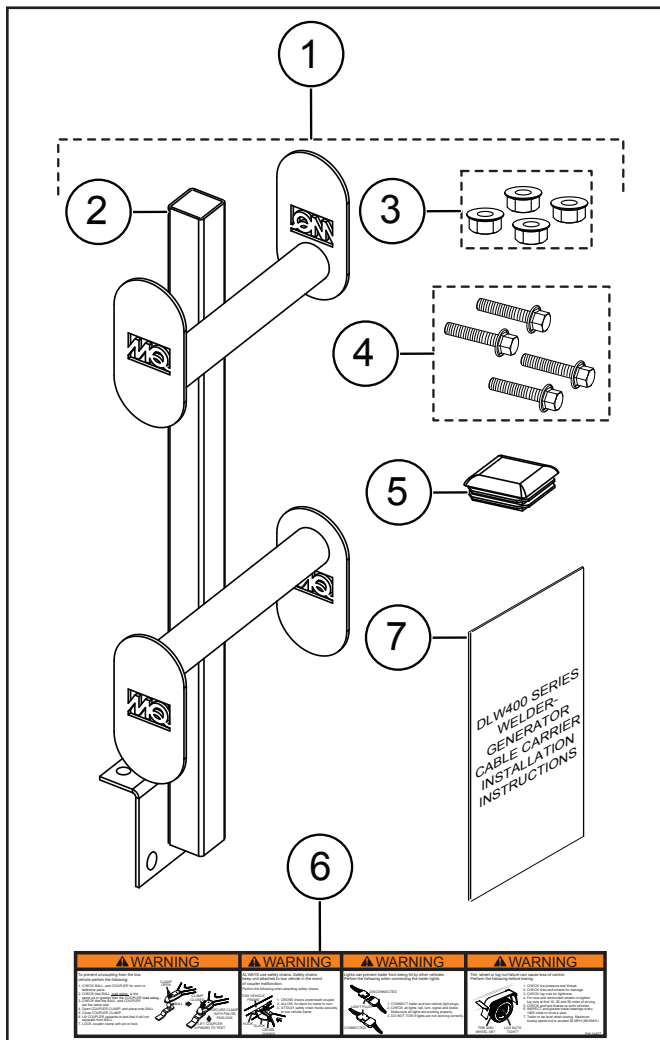


Figure 1. Welder Cable Carrier Installation Kit

Table 1. Welder Cable Carrier Installation Kit

Item No.	Part No.	Description	QTY.	Remarks
1	59068	Kit, Welder Cable Carrier TRLRMP/MPXF	1	Includes items 2-7
2	59057	Welder Cable Carrier	2	
3	21781	Nut, Flanged 3/8-16 Serrated PLTD	8	
4	32379	Screw, HHFS, 3/8-16 x 1" ZN	8	
5	44052	Cap, Tube	2	
6	34627	Decal, Towing Warning	1	
7	59066	Instructions, TRLRMPCC Kit Installation	1	

### WORK SAFELY!

Only a **qualified service technician** with proper training should perform this installation. Follow all shop safety rules when performing this installation.

### PREPARATION

1. Place the trailer in an area free of dirt and debris. Make sure it is on secure level ground with chock blocks underneath each wheel to prevent the trailer from rolling.

## MOUNTING WELDER CABLE CARRIER

### NOTICE

Newer TRLRMP/MPXF trailers built after October 2015 will have welder cable carrier mounting holes already pre-drilled. If trailer is not pre-drilled, refer to the **Measuring Mounting Locations** section.

1. Using a 9/16" socket and open ended wrench, secure the welder cable carrier to the trailer frame (Figure 2) using four 3/8-16 x 1" HHFS screws and 3/8-16 flanged nuts.
2. Torque the screws and nuts to 26 ft-lbs (35.3 N•m).
3. Mount and secure the welder cable carrier cap as shown in Figure 2.
4. Repeat for the installation of the second welder cable carrier.

## MEASURING MOUNTING LOCATIONS

1. Using a tape measure, make a mark toward the front of the trailer frame (Figure 2) 53.75 inches from the inside edge of the bumper.
2. Locate the welder cable carrier (P/N 59057) in the kit.
3. Align the welder cable carrier mounting bracket with the marking made in Step 1.
4. Before marking and drilling the mounting bracket holes, a Multiquip towing decal (P/N 34627) may need to be removed. Multiquip has provided a replacement decal.
5. Once positioned, mark the screw hole (4) locations as shown in Figure 2.
6. Using a 25/64" drill bit (Figure 2), drill out the four holes.

### NOTICE

Depending on drill bit quality, pre-drilling the welding cable carrier mounting bracket hole with a smaller drill bit may be necessary.

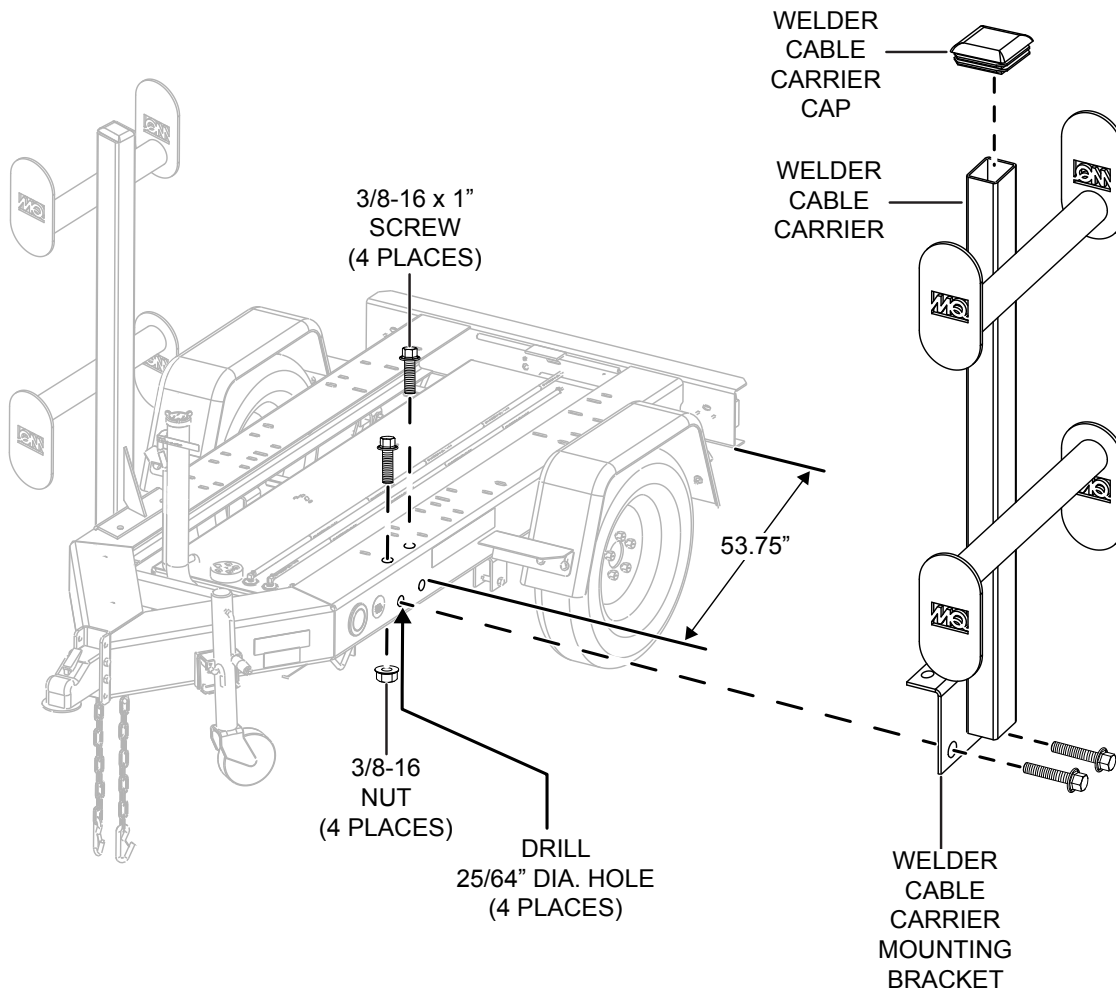


Figure 2. Welder Cable Carrier Installation



# Kit, Welder Cable Carrier TRLRMP/MPXF

## Welder Cable Carrier Installation Instructions

---

## HERE'S HOW TO GET HELP

PLEASE HAVE THE MODEL AND SERIAL  
NUMBER ON-HAND WHEN CALLING

### UNITED STATES

#### ***Multiquip Corporate Office***

18910 Wilmington Ave. Tel. (800) 421-1244  
Carson, CA 90746 Fax (310) 537-3927  
Contact: mq@multiquip.com

#### ***Service Department***

800-421-1244 Fax: 310-537-4259  
310-537-3700

#### ***Technical Assistance***

800-478-1244 Fax: 310-943-2238

#### ***MQ Parts Department***

800-427-1244 Fax: 800-672-7877  
310-537-3700 Fax: 310-637-3284

#### ***Warranty Department***

800-421-1244 Fax: 310-943-2249  
310-537-3700

---

### CANADA

#### ***Multiquip***

4110 Industriel Boul. Tel: (450) 625-2244  
Laval, Quebec, Canada H7L 6V3 Tel: (877) 963-4411  
Contact: infocanda@multiquip.com Fax: (450) 625-8664

---

### UNITED KINGDOM

#### ***Multiquip (UK) Limited Head Office***

Unit 2, Northpoint Industrial Estate, Tel: 0161 339 2223  
Globe Lane, Fax: 0161 339 3226  
Dukinfield, Cheshire SK16 4UJ  
Contact: sales@multiquip.co.uk

© COPYRIGHT 2015, MULTIQUIP INC.

Multiquip Inc and the MQ logo are registered trademarks of Multiquip Inc. and may not be used, reproduced, or altered without written permission. All other trademarks are the property of their respective owners and used with permission.

The information and specifications included in this publication were in effect at the time of approval for printing. Illustrations, descriptions, references and technical data contained in this document are for guidance only and may not be considered as binding. Multiquip Inc. reserves the right to discontinue or change specifications, design or the information published in this publication at any time without notice and without incurring any obligations.

Your Local Dealer is:

