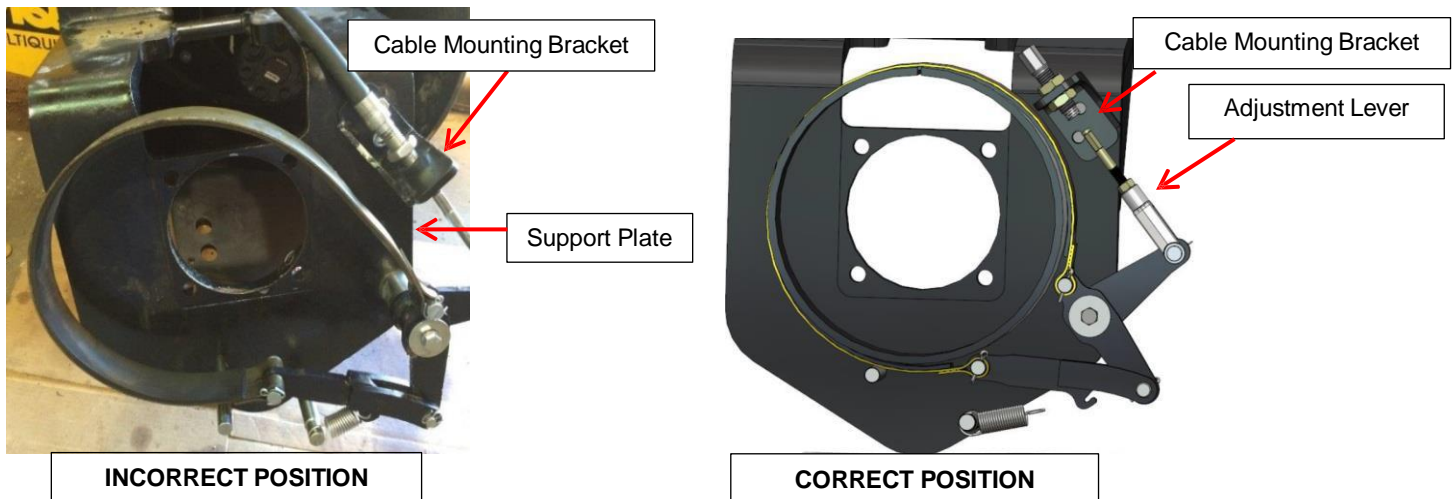


## PARKING BRAKE DOES NOT ENGAGE

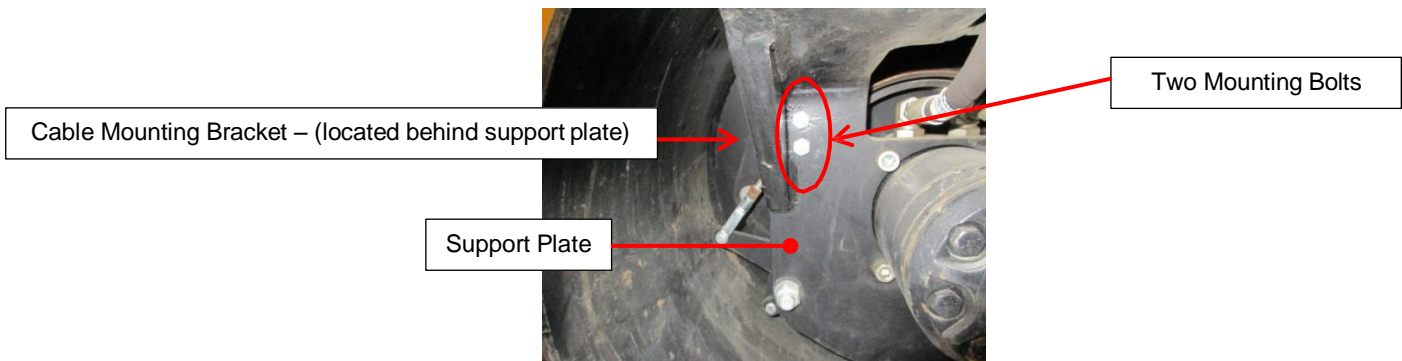
It has been found on some machines the parking brake will not properly engage and may slip on incline or slope. The normal adjustment procedure will not correct this issue. This was due to the parking brake bracket being installed upside down at the factory.

Effected machines were produced between **February & October 2015**

Production serial number range **150201 to 151020**



The bracket position is not visible but can be determined by feeling behind the support plate by hand.



If bracket is discovered mounted upside down. The position can be corrected without removing the main support plate.

- First remove cable end clevis attachment.
- Next loosen and remove the cable jam nut.
- Using 3/8 wrench, remove the two mounting bolts.

The bracket can now be removed, re-installed and adjusted to the correct position. Re-assemble the cable and bracket, ensuring the attachment jam nuts are centered onto cable housing threads.