



The information and specifications included in this publication were in effect at the time of approval for printing. Illustrations, descriptions, references and technical data contained in this document are for guidance only and may not be considered as binding. MultiQuip Inc. reserves the right to discontinue or change specifications, design or the information published in this publication at any time without notice and without incurring any obligations.

# ENGINE INTERFACE CABLE AND DIAGNOSTIC SOFTWARE

The engine's ECU stores system fault events as Diagnostic Trouble Codes (DTC). The Check Engine Warning Lamp will illuminate on the control panel if a system fault has been detected.

Using a laptop interface cable and software, the service technician can interface with the engine's ECU for retrieving the DTC information.

### Following are the service capabilities in utilizing the interface cable software

- Clearing of all codes, including historical
- Real-time viewing of all active engine parameter including LPG gaseous pressure
- Data plotting and recording of engine parameters
- Quickly determines engine malfunction

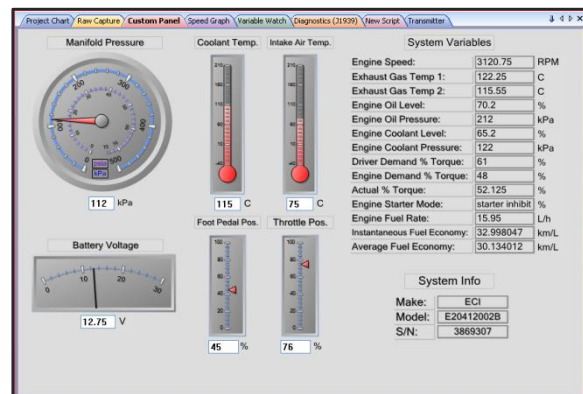
## Interface Cable and Software Kits

Model	Zenith Engine	MQ Part Number
C30HDG	416A	ZPPC282453
C30HDGA	416G	202163
LS300G	Z428	202169

Interface Cable



Program screenshot



*\*Program user interface may change without prior notice*

*\*Supports Windows 2000, XP, Vista and Windows 7*