



The information and specifications included in this publication were in effect at the time of approval for printing. Illustrations, descriptions, references and technical data contained in this document are for guidance only and may not be considered as binding. MultiQuip Inc. reserves the right to discontinue or change specifications, design or the information published in this publication at any time without notice and without incurring any obligations.

## WIRELESS KIT #EM98215C24 INSTALLATION INSTRUCTIONS

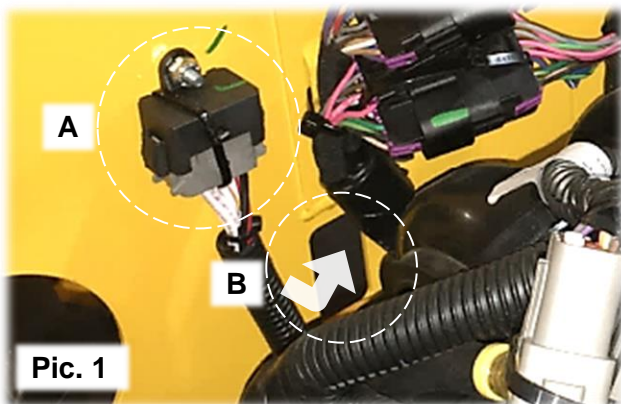
### Wireless Kit Contents

Qty. 1 each... Antenna, Receiver, Transmitter (batteries included) & Rubber Case.

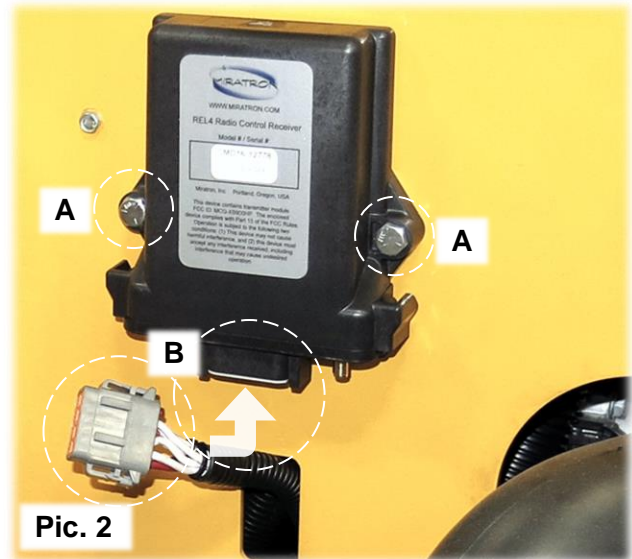
### Receiver Installation:

Beginning February 2020 s/nL020429, machines are prewired to accept this wireless kit.

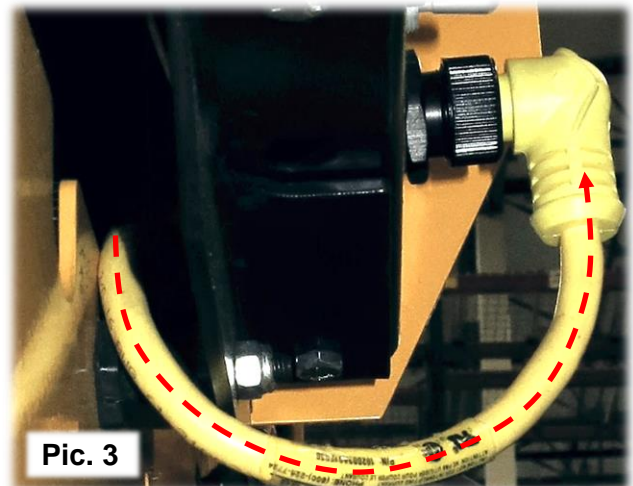
1. *Pre shipping status units only:* Remove the battery box cover and temporarily connect battery cable terminals to battery posts, no need to tighten screws so long as the terminals fit snug over the battery posts. Disconnect cables when done with installation.
2. *Pre shipping status units only:* Level the machine and add fuel to the fuel tank just until it's visible at the bottom of the tank
3. Locate the receiver harness receptacle located behind the left front panel. Remove the bolt and nut that secures the receptacle to the panel. Discarding the hardware and protective cap. Ref. Pic. 1 - A
4. Route the receiver harness receptacle through the rectangular cutout toward the front of panel. Ref. Pic. 1 - B



5. Mount the receiver module onto the front panel securing with hardware. Use 2 each 1/4-20" x 1" bolts, 2 each 1/4" flat washers, 2 each 1/4" Nyloc nuts. Ref. Pic. 2 - A
6. Plug the receiver harness connector into the receiver module connector. Ref. Pic. 2 - B



7. Locate the yellow connector cable rolled up behind the control panel and Route the free end of receptacle through the bottom of the panel opening to the front of panel. Insert the male receptacle into the remote female outlet receptacle. Ref. Pic. 3



## WIRELESS KIT #EM98215C24 INSTALLATION INSTRUCTIONS

### Antenna installation:

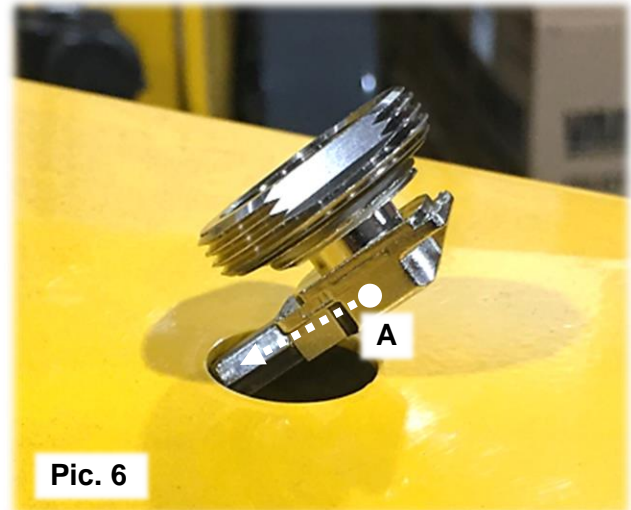
8. Locate the pre-punched 3/4" hole on top of the hood. Metal to metal contact between hood and antenna mounting is essential for best performance. Remove paint from the inner hole diameter, about 1/8" back from the edge of the hole for good metal to metal contact. Ref. Pic. 4 - A



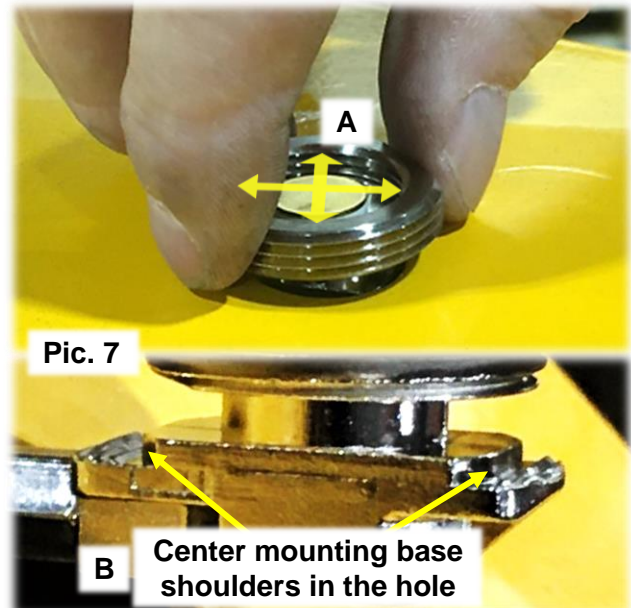
9. Remove the antenna threaded locking nut then re-install lock nut onto antenna mounting base within about a turn and a half. The O-ring side must face downward. Ref. Pic. 5 - A



10. Route the cable through the top of the hole into the hood interior. Ref. Pic. 6 - A



11. Insert the mounting base into the hole and maneuver via the locking nut until proper alignment of the mounting base shoulders and metal tabs to the center of the hole, the tabs will catch the underside of the hole/cover. Ref. Pic. 7 - A & B





## WIRELESS KIT #EM98215C24 INSTALLATION INSTRUCTIONS

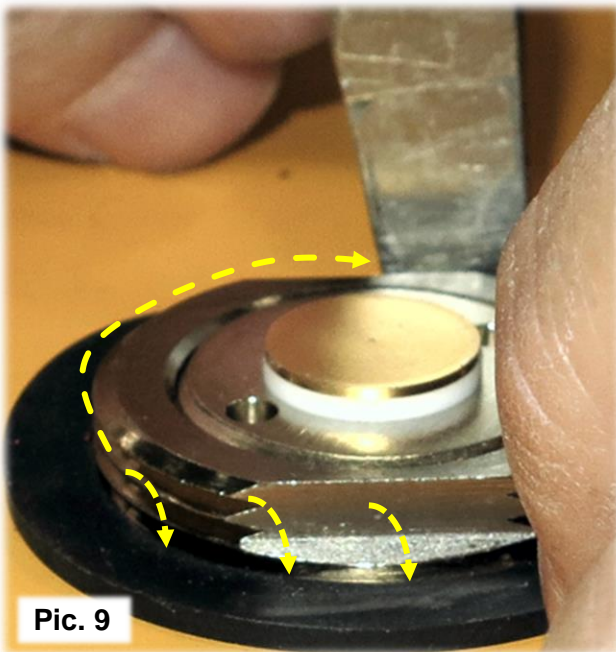
### Antenna Installation Continued:

12. Initially tighten the locking nut finger tight while holding the mounting base from rotating under the hood. Using an adjustable wrench, carefully tighten the locking nut firmly while holding the mounting base from turning (60 in. lb. max.). "DO NOT OVER TIGHTEN". Ref. Pic. 8



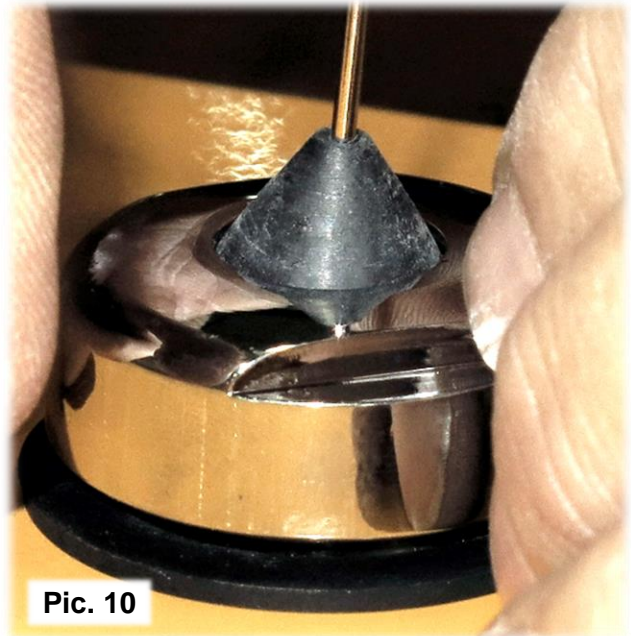
Pic. 8

13. Place the flat rubber seal over the locking nut threads and press down flat around the threads with the flat end of a screwdriver. Ref. Pic. 9



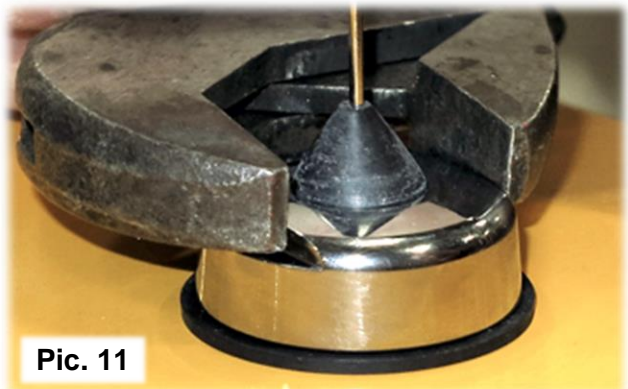
Pic. 9

14. Install the antenna securing with chrome cap, fully tighten by hand initially. Ref. Pic. 10



Pic. 10

15. Carefully tighten the chrome cap firmly with an adjustable wrench, DO NOT OVERTIGHTEN. Ref. Pic. 11.



Pic. 11

## WIRELESS KIT #EM98215C24 INSTALLATION INSTRUCTIONS

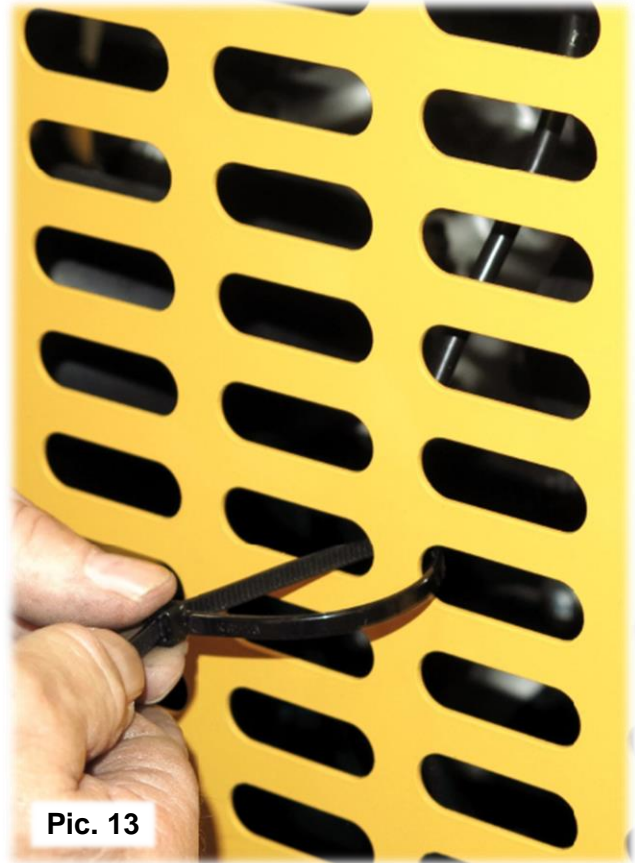
### Antenna Installation Continued:

16. Rout the end of the coaxial cable through the front panel (next to the air filter rubber tube) and screw connector end onto bottom of receiver. Ref. Pic. 12



Pic. 12

17. Using a plastic tie strap, secure the coaxial cable to the hood ventilation holes. Slowly lift the engine hood checking the cable does not snag with anything and adjust as needed. Ref. Pic. 13



Pic. 13

### Pairing Procedure:

18. The transmitter and receiver must be matched as a pair, perform the following pairing procedure for this purpose.
- A. Place the engine ignition switch in the ON position
  - B. Activate the transmitter by pressing the ON/OFF button, and verify that the status (ant) LED is blinking (active)
  - C. Place the machine's pumping control toggle switch in the Remote ON position, located on the control panel
  - D. Press the transmitter's pump ON/OFF button to ON, the (ant) LED will illuminate solid. Press and hold the radio control receiver learn button for 15 seconds, located at the bottom of the radio control receiver.



The information and specifications included in this publication were in effect at the time of approval for printing. Illustrations, descriptions, references and technical data contained in this document are for guidance only and may not be considered as binding. Multiquip Inc. reserves the right to discontinue or change specifications, design or the information published in this publication at any time without notice and without incurring any obligations.

## WIRELESS KIT #EM98215C24 INSTALLATION INSTRUCTIONS

### Functional Test:

19. Perform the functional test procedure below to test the remote control radio system.

- Start the engine as outlined on the operator's manual
- Press the transmitter Power ON/OFF button. Make sure that the Status indicator LED blinks to indicate power is ON
- Place the pumping control switch on the unit's control box panel into the REMOTE ON position
- Press the transmitter's FLOW + and FLOW – buttons alternately. Verify that engine speed increase and decrease
- Press the transmitter's pump ON/OFF button a few times. Verify that the pumping alternately starts and stops with each press of the button

