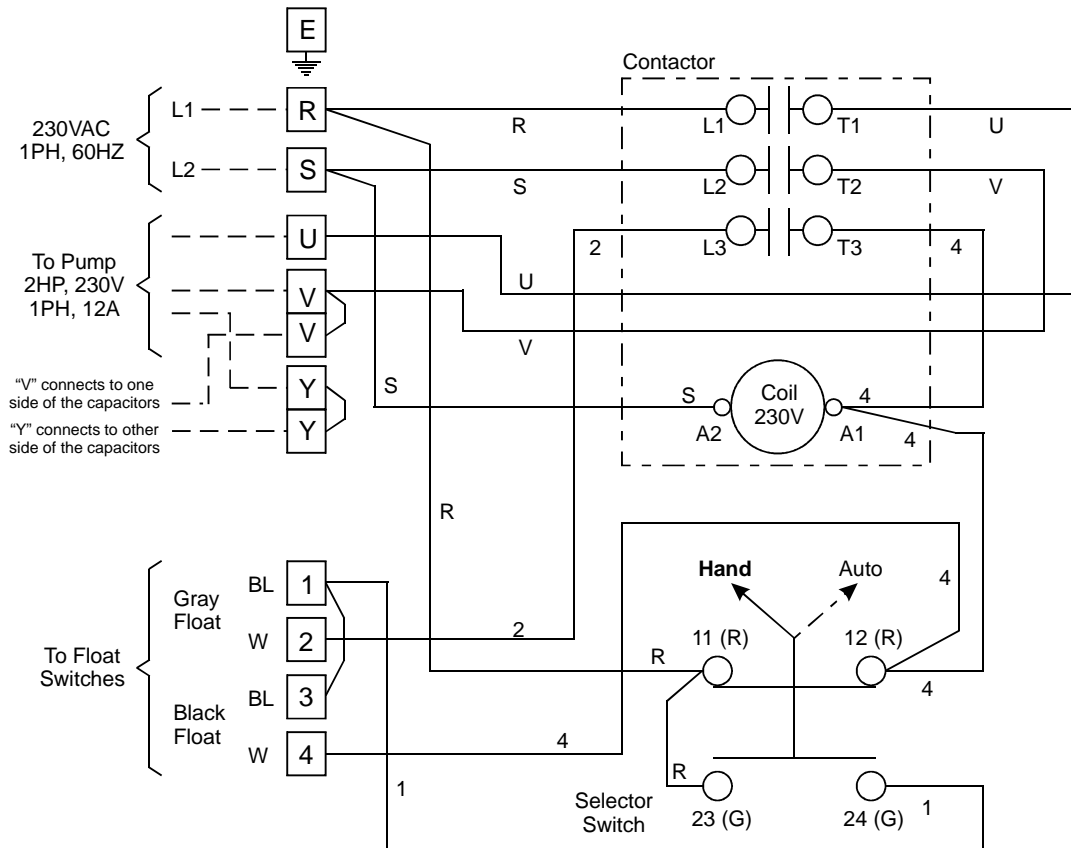


CB6 CONTROL BOX

WARNING: THE INSTALLER OF THIS UNIT IS RESPONSIBLE FOR PROVIDING A MAIN DISCONNECT AND THE BRANCH CIRCUIT PROTECTION FOR THIS DEVICE.



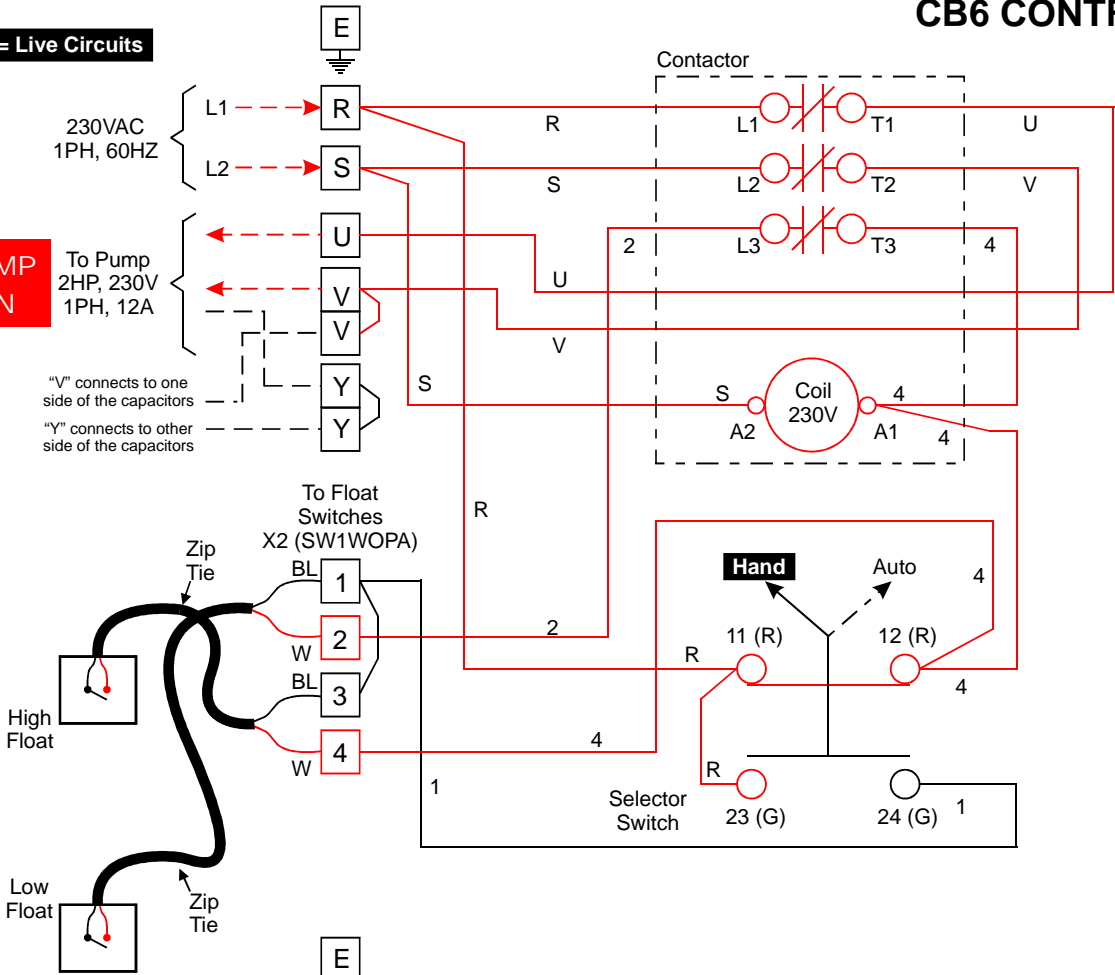
Notes:

- * The selector switch has no center position, only Hand & Auto settings.
- * The "V" and the two "Y" capacitors connections are not applicable to the MQ pumps.

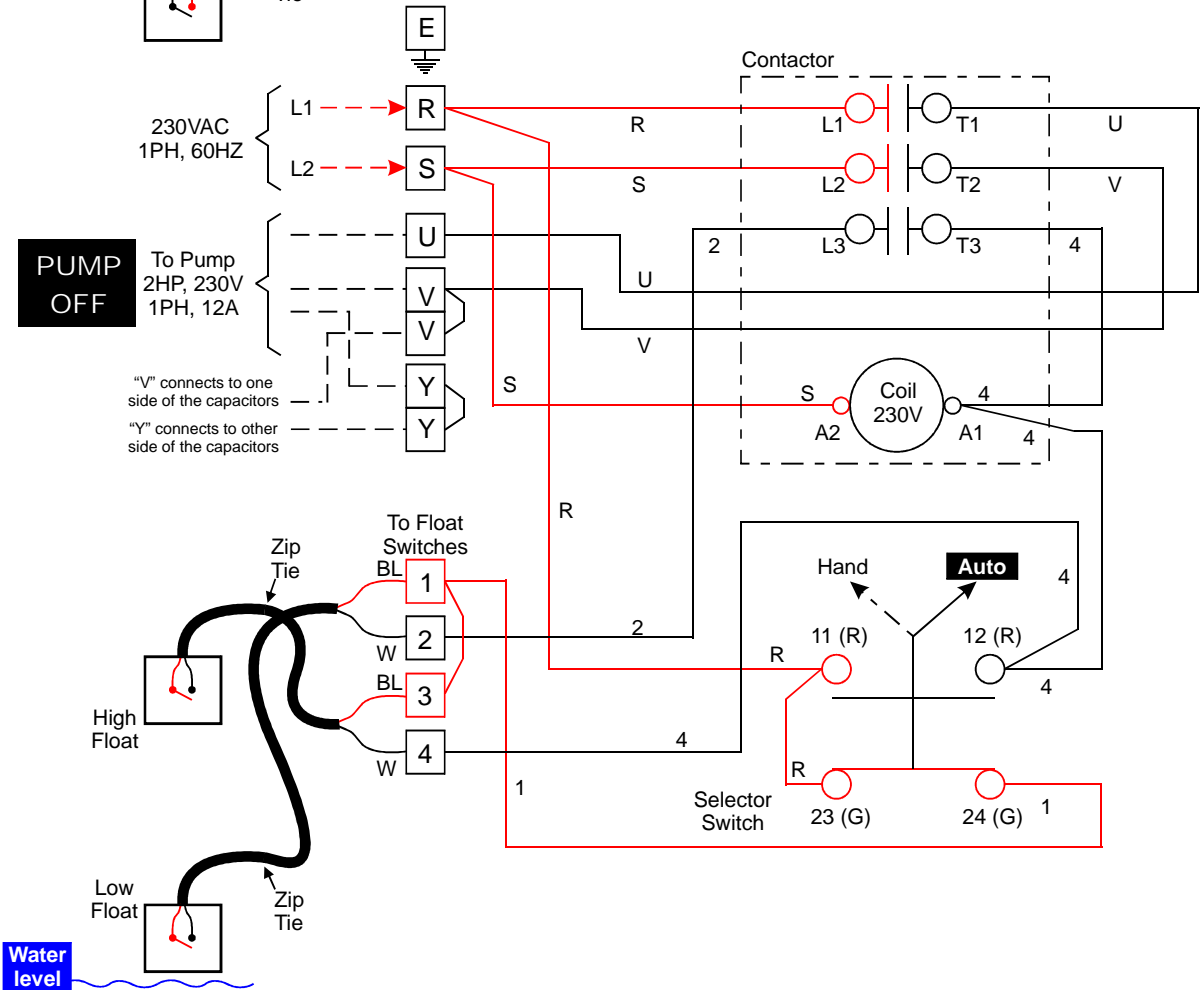
CB6 CONTROL BOX

— = Live Circuits

PUMP ON

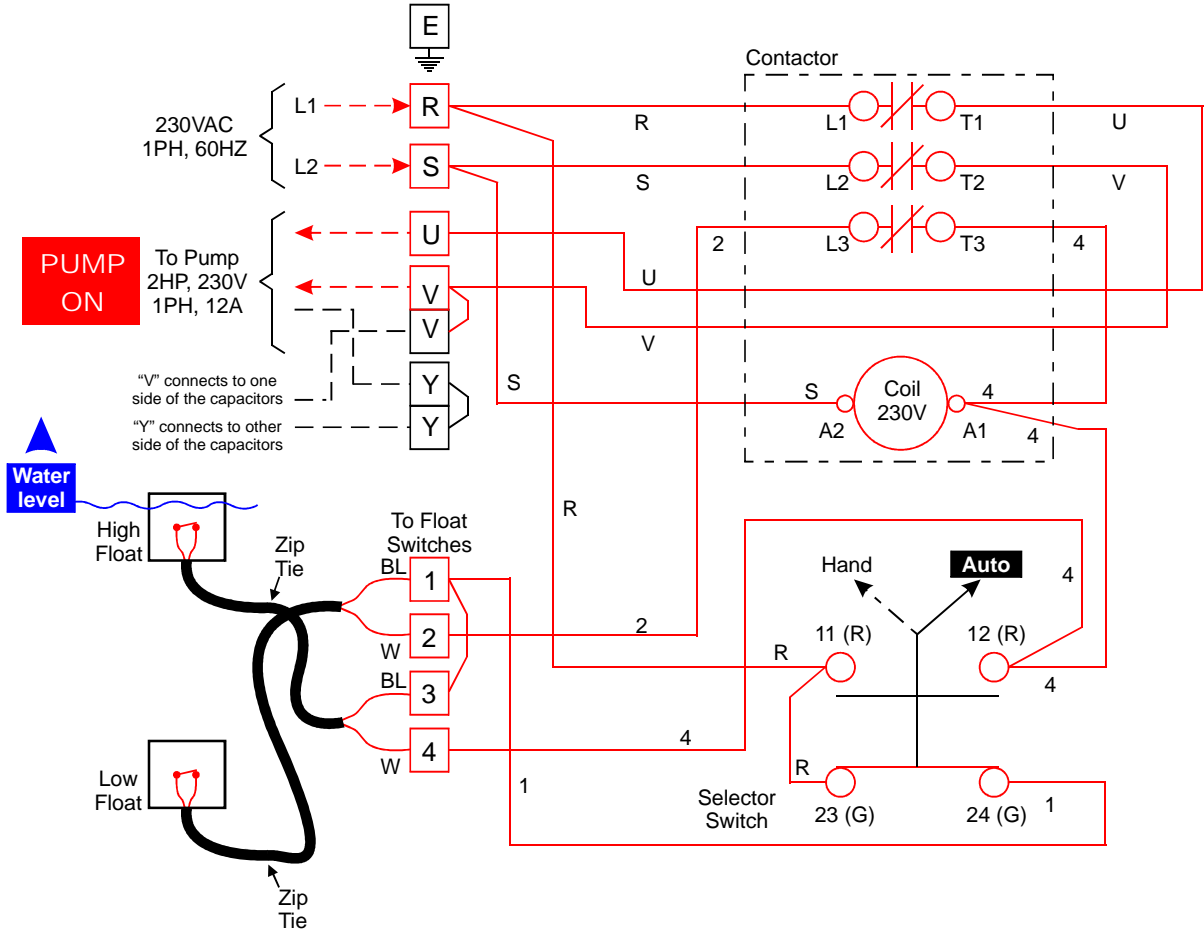
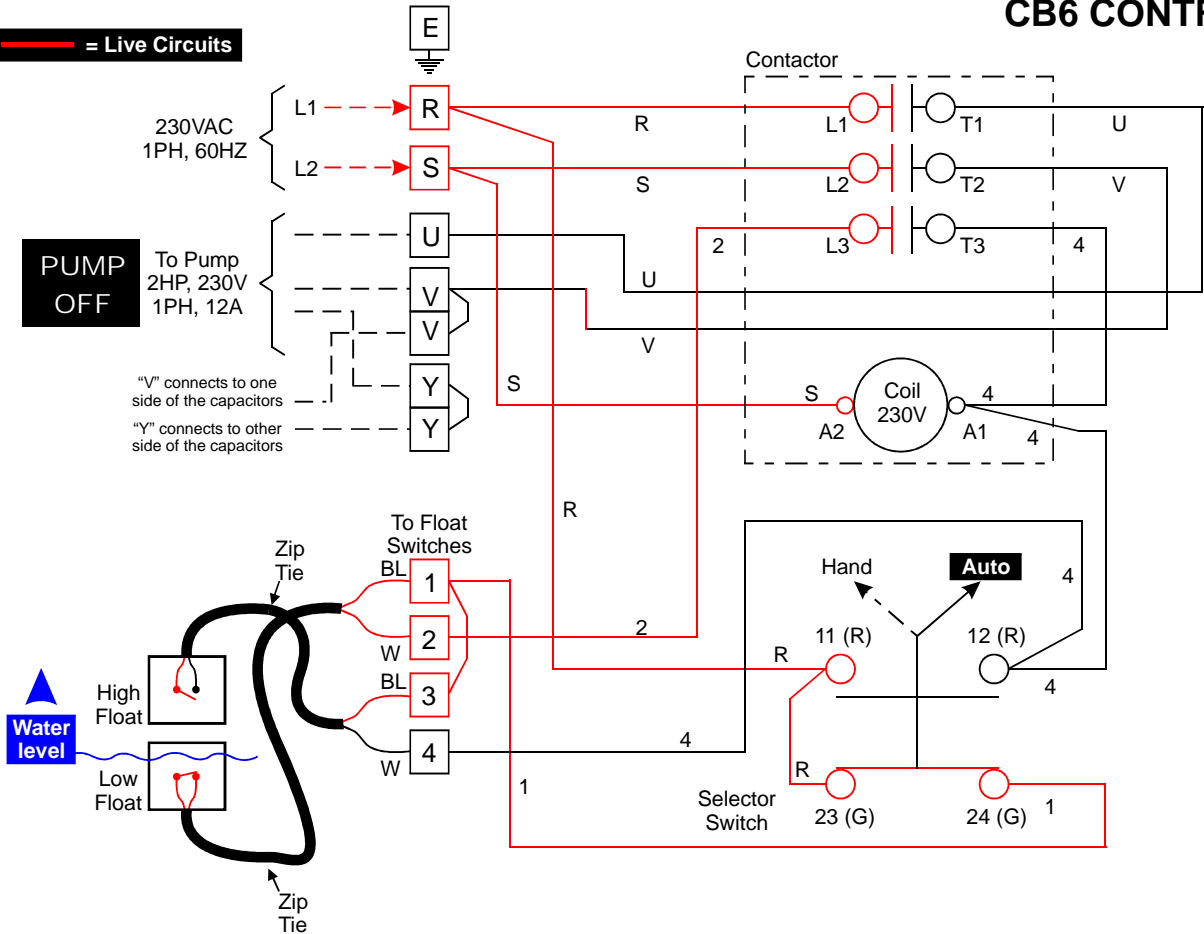


PUMP OFF



CB6 CONTROL BOX

— = Live Circuits



CB6 CONTROL BOX

— = Live Circuits

