

The information and specifications included in this publication were in effect at the time of approval for printing. Illustrations, descriptions, references and technical data contained in this document are for guidance only and may not be considered as binding. MultiQuip Inc. reserves the right to discontinue or change specifications, design or the information published in this publication at any time without notice and without incurring any obligations.

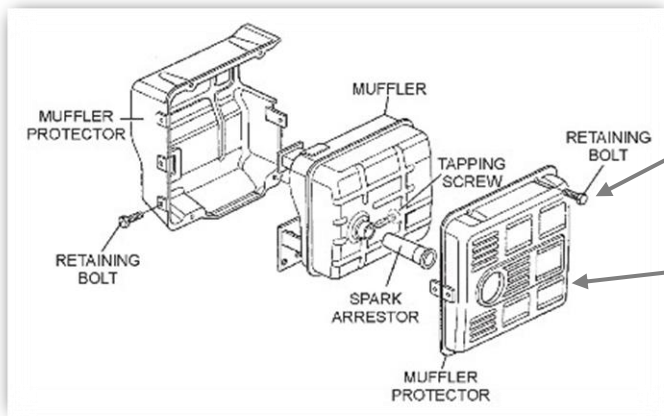
CLOGGED MUFFLER CORRECTIVE PROCEDURE

Dislodged insulation inside the muffler may accumulate between the exhaust port duct and spark arrestor resulting in back pressure in the exhaust system. Symptoms will vary including anything from a change in the sound of the engine, poor performance under load or no load, stalling and may also prevent the engine from starting. Please proceed with the following instructions to correct the described condition.



CAUTION HOT SURFACE

ALLOW MUFFLER TO COOL BEFORE PROCEEDING IF ENGINE HAS BEEN RUNNING



1. Remove the muffler protector retaining bolts

2. Remove the muffler protector



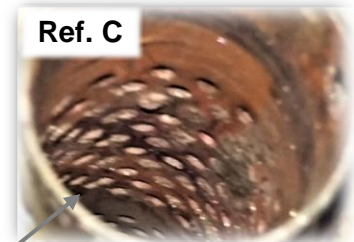
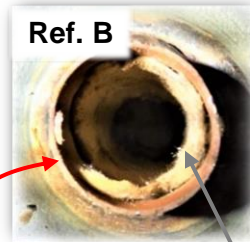
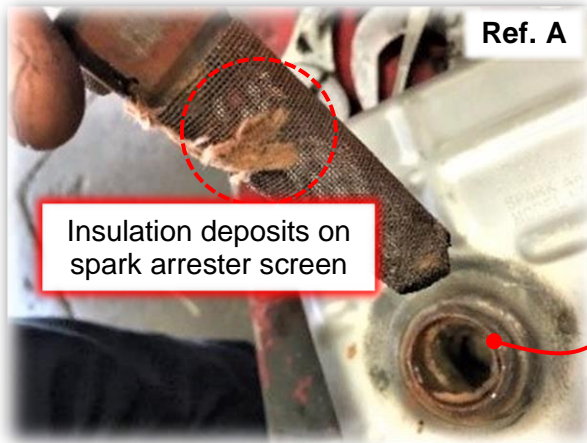
3. Remove tapping screw from exhaust port that retains the spark arrestor

4. Push the spark arrestor's lock tab inward to disengage it from the exhaust port

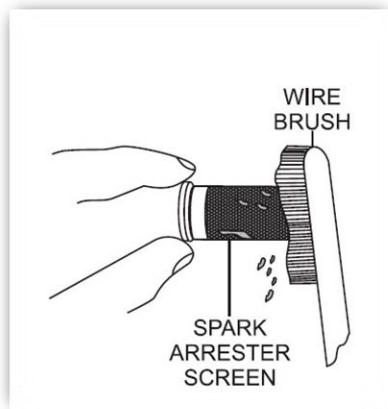


5. Using pliers, carefully twist and pull the spark arrestor out from the exhaust port

CLOGGED MUFFLER CORRECTIVE PROCEDURE



6. Note the insulation accumulation on the spark arrester surface and inside the exhaust port duct, Ref. A & B. Using a pick, carefully remove all insulation deposits from inside the exhaust port duct until the entire metal duct surface is visible and clean, Ref. C.



7. Use a wire brush to remove all insulation deposits from the spark arrester screen.

8. **CAUTION:** Ensure the area is clear of any combustible materials or flammable liquids like gasoline. It's recommended running the engine for 30 minutes while the spark arrester is removed to allow any remaining insulation to blowout.
9. **CAUTION:** Allow the engine time to cool prior inspecting the exhaust port duct.
10. If more insulation deposits are found in the exhaust port duct, repeat steps 6, 8 and 9.
11. Install the spark arrester once the exhaust port duct is found clear of insulation deposits.
12. Reinstall the spark arrester's tapping screw.
13. Reinstall the muffler protector, secure with bolts.

Please Note: As part of Honda's recommended maintenance schedule, the spark arrester should be cleaned every 6 months or 100 hours whichever occurs first.