

## VACUUM PUMP WIRING COUNTERMEASURE

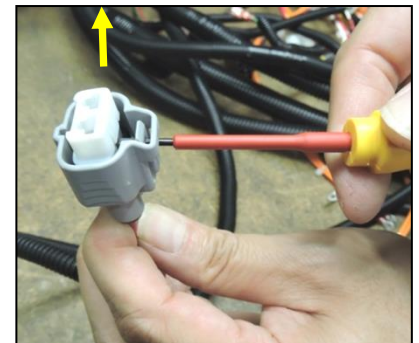
It has been noted that the vacuum pump may have the wires crossed on the wire connector and may need to be swapped (corrected). Failure symptoms observed in this case could be a DTC SP10029 FMI 0 or Isuzu P-code P2468, for Excessive Purge Time-Out. Due to the incorrect wiring, the exhaust throttle valve may not function correctly during a SCR purge cycle. Inspect engine harness connector CN-L.

1. Locate the vacuum pump connector CN-L on the engine wiring harness. If it is wired as in the picture the wires are installed backwards.

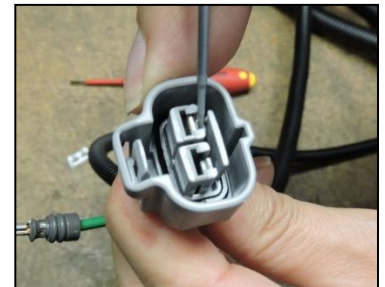


This one is wired incorrectly

2. Use a small flat blade screwdriver (2.5 mm). Insert from the side and pry the white locking cap up and out of the connector.



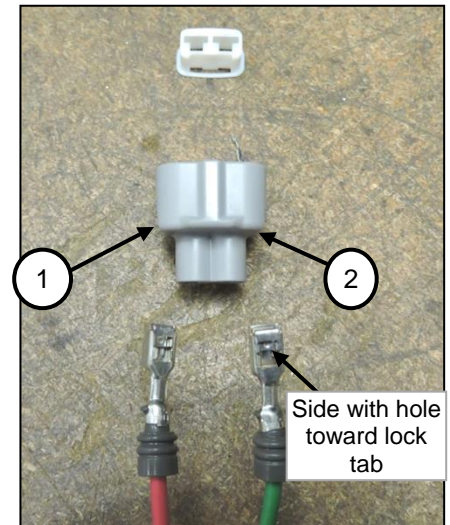
3. Use the screwdriver and press the small tab away from the metal terminal inside the connector while simultaneously pulling on the wire.



4. Remove both wires.



5. Locate the # 1 and # 2 positions on the connector. The number is molded into the connector body.
6. Orient the **RED** wire with the square hole side of the terminal toward the locking tab and insert in the # 1 location on the connector. Push it until it clicks into place.
7. Orient the **GREEN** wire with the square hole side of the terminal toward the locking tab and insert into the # 2 location on the connector. Push until it clicks into place.



8. Install the locking cap (Fig. A) to the connector by aligning the long slot with the internal tab. Push until it is flush with the end of the connector

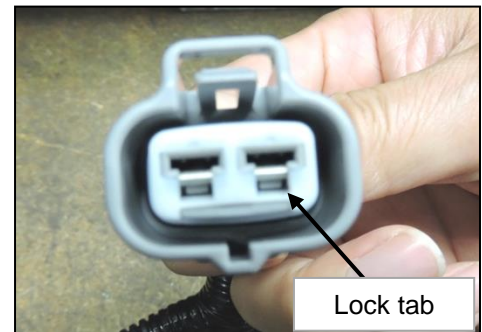
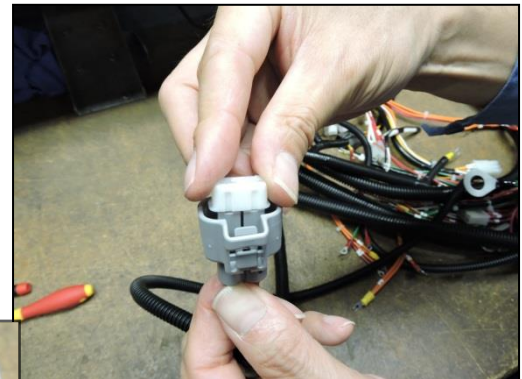


Fig. A



9. Wire installed correctly





# Technical Information

Product Group: GENERATORS

Model: DCA125SSIU4F

This bulletin is provided for technical reference and service related updates. If you have any questions, comments or do not wish to receive these e-mails, please reply to this e-mail or call the Service Technical Support Group 800 478-1244.

