

PARTS MANUAL



WHISPERWATT™ SERIES MODEL DCA300SSC MODEL DCA300SSCU 60HZ GENERATOR (CUMMINS QSL9-G3 DIESEL ENGINE)

**PARTS LIST NO. C2870300204 — DCA300SSC
PARTS LIST NO. C2870300104A — DCA300SSCU**

Revision #2 (03/18/24)

To find the latest revision of this publication or associated operation manual, visit our website at: www.mqpower.com



THIS MANUAL MUST ACCOMPANY THE EQUIPMENT AT ALL TIMES.

**DCA300SSC/DCA300SSCU
60 Hz Generator**

Explanation Of Code In Remarks Column..... 4
Suggested Spare Parts 5

Component Drawings

Generator Assembly 6–9
Control Box Assembly 10–13
Engine And Radiator Assembly 14–17
Engine Operating Panel Assembly 18–19
Output Terminal Assembly 20–23
Battery Assembly (DCA300SSC) 24–25
Battery Assembly (DCA300SSCU)..... 26–27
Muffler Assembly 28–29
Fuel Tank Assembly (DCA300SSC) 30–31
Fuel Tank Assembly (DCA300SSCU)..... 32–33
Enclosure Assembly 34–41
Rubber Seals Assembly 42–43
Nameplate And Decals Assy. DCA300SSC..... 44–47
Nameplate And Decals Assy. DCA300SSCU .. 48–51

NOTICE
Specifications and part numbers are subject to change without notice.

EXPLANATION OF CODE IN REMARKS COLUMN

The following section explains the different symbols and remarks used in the Parts section of this manual. Use the help numbers found on the back page of the manual if there are any questions.

NOTICE

The contents and part numbers listed in the parts section are subject to change without notice. Multiquip does not guarantee the availability of the parts listed.

SAMPLE PARTS LIST

NO.	PART NO.	PART NAME	QTY.	REMARKS
1	12345	BOLT	1	INCLUDES ITEMS W/%
2%		WASHER, 1/4 IN.		NOT SOLD SEPARATELY
2%	12347	WASHER, 3/8 IN. ...	1	MQ-45T ONLY
3	12348	HOSE	A/R	MAKE LOCALLY
4	12349	BEARING	1	S/N 2345B AND ABOVE

NO. Column

Unique Symbols — All items with same unique symbol (@, #, +, %, or >) in the number column belong to the same assembly or kit, which is indicated by a note in the “Remarks” column.

Duplicate Item Numbers — Duplicate numbers indicate multiple part numbers, which are in effect for the same general item, such as different size saw blade guards in use or a part that has been updated on newer versions of the same machine.

NOTICE

When ordering a part that has more than one item number listed, check the remarks column for help in determining the proper part to order.

PART NO. Column

Numbers Used — Part numbers can be indicated by a number, a blank entry, or TBD.

TBD (To Be Determined) is generally used to show a part that has not been assigned a formal part number at the time of publication.

A blank entry generally indicates that the item is not sold separately or is not sold by Multiquip. Other entries will be clarified in the “Remarks” Column.

QTY. Column

Numbers Used — Item quantity can be indicated by a number, a blank entry, or A/R.

A/R (As Required) is generally used for hoses or other parts that are sold in bulk and cut to length.

A blank entry generally indicates that the item is not sold separately. Other entries will be clarified in the “Remarks” Column.

REMARKS Column

Some of the most common notes found in the “Remarks” Column are listed below. Other additional notes needed to describe the item can also be shown.

Assembly/Kit — All items on the parts list with the same unique symbol will be included when this item is purchased.

Indicated by:

“INCLUDES ITEMS W/(unique symbol)”

Serial Number Break — Used to list an effective serial number range where a particular part is used.

Indicated by:

“S/N XXXXX AND BELOW”

“S/N XXXX AND ABOVE”

“S/N XXXX TO S/N XXX”

Specific Model Number Use — Indicates that the part is used only with the specific model number or model number variant listed. It can also be used to show a part is NOT used on a specific model or model number variant.

Indicated by:

“XXXXX ONLY”

“NOT USED ON XXXX”

“Make/Obtain Locally” — Indicates that the part can be purchased at any hardware shop or made out of available items. Examples include battery cables, shims, and certain washers and nuts.

“Not Sold Separately” — Indicates that an item cannot be purchased as a separate item and is either part of an assembly/kit that can be purchased, or is not available for sale through Multiquip.

SUGGESTED SPARE PARTS

DCA300SSC/DCA300SSCU WHISPERWATT GENERATOR WITH CUMMINGS QSL9-G3 DIESEL ENGINE

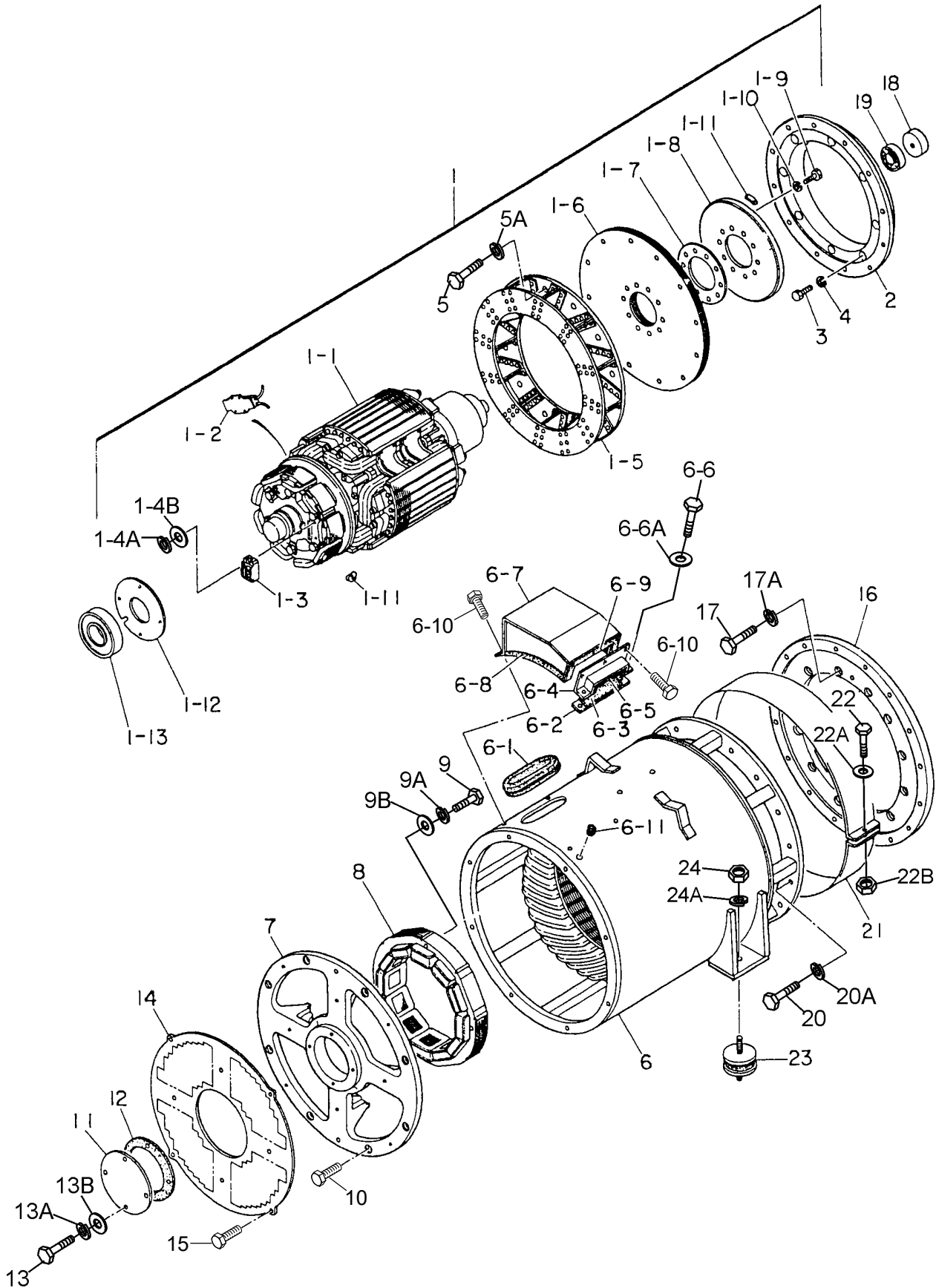
1 TO 3 UNITS

Qty.	P/N	Description
1.....	.0602015120.....	HOSE, RADIATOR UPPER ENGINE
1.....	.0602015121.....	HOSE, RADIATOR UPPER/LOWER
1.....	.0602015122.....	HOSE, RADIATOR LOWER
3.....	.0602015244.....	BELT, FAN
1.....	.4921744.....	SENSOR, OIL PRESSURE
1.....	.0602122272.....	OIL PRESSURE UNIT
1.....	.0602123267.....	WATER TEMPERATURE UNIT (DCA300SSC)
1.....	.0602123261.....	WATER TEMPERATURE UNIT (DCA300SSCU)
1.....	.0602210189.....	WATER TEMP. SWITCH ENGINE
1.....	.0602123290.....	SWITCH, COOLANT LEVEL
6.....	.0810105400.....	FILTER, FUEL TANK (DCA300SSC)
6.....	.0602042588.....	FUEL FILTER CARTRIDGE
6.....	.0602042589.....	CARTRIDGE WATER SEPERATOR
6.....	.0602041224.....	FILTER, OIL CARTRIDGE
6.....	.0602045193.....	FILTER, COOLANT CARTRIDGE
3.....	.0602046638.....	ELEMENT AIR CLEANER OUTER
3.....	.0602046639.....	ELEMENT AIR CLEANER INNER
1.....	.0601808803.....	CIRCUIT BREAKER 1P 20A
1.....	.0601808804.....	CIRCUIT BREAKER 2P 50A
2.....	.LY2DUS24VDC	RELAY

NOTICE

Part number on this Suggested Spare Parts list may supersede/replace the P/N shown in the text pages of this book.

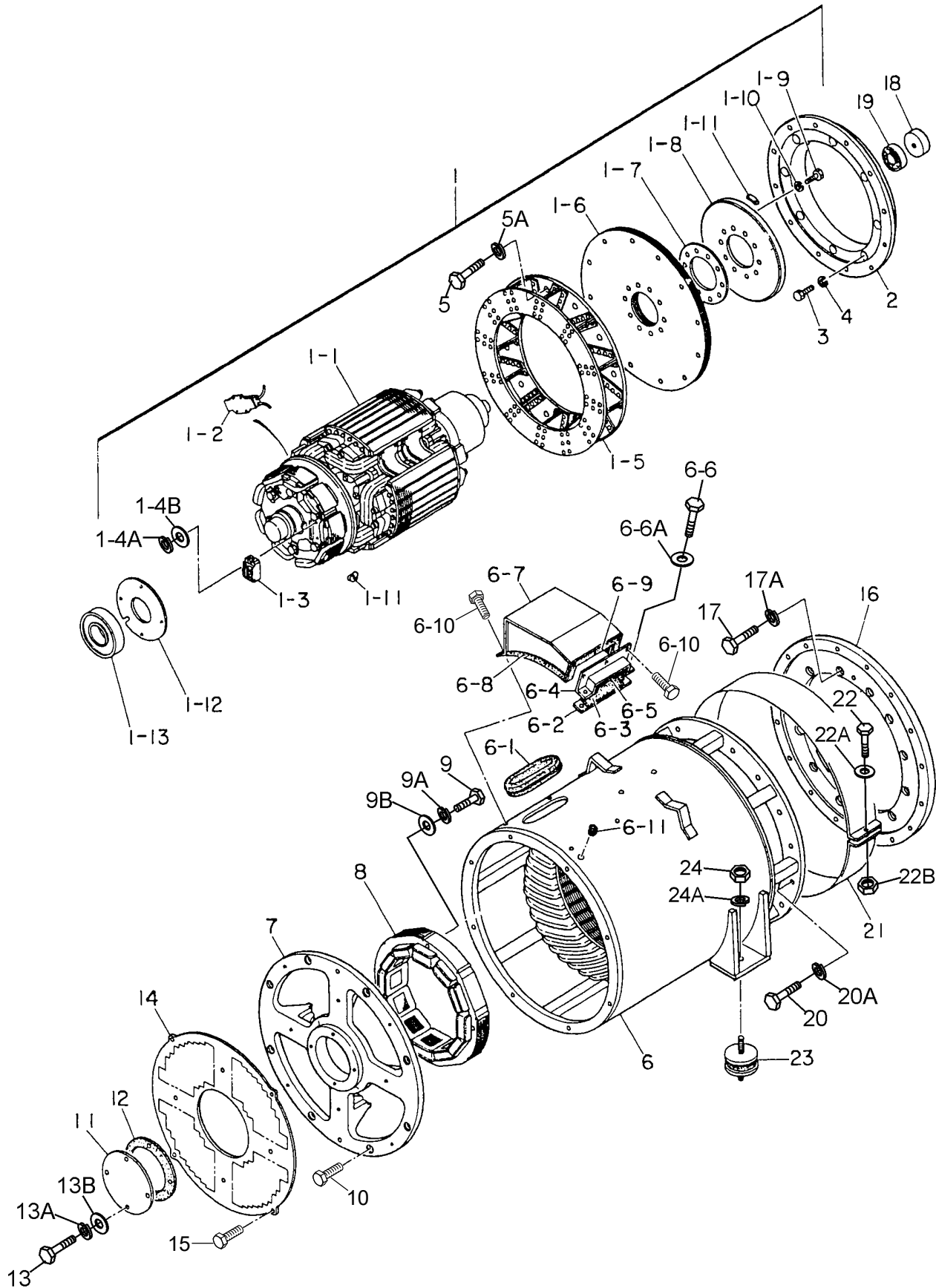
GENERATOR ASSY.



GENERATOR ASSY.

<u>NO.</u>	<u>PART NO.</u>	<u>PART NAME</u>	<u>QTY.</u>	<u>REMARKS</u>
1	C2110000002	ROTOR ASSY	1.....	INCLUDES ITEMS W/#
1-1#		FIELD ASSY	1	
1-2#	0601842402	RESISTOR, 80W 300KΩ	2	
1-3#	0601823282	RECTIFIER	1	
1-4#	0018205020	HEX HD. CAP SCREW	2	
1-4A#	0040005000	WASHER, LOCK	2	
1-4B#	0041205000	WASHER, FLAT	2	
1-5#	8201070002	FAN	1	
1-6#	8201611004	COUPLING DISK	12	
1-7#	C3164200004	WASHER, COUPLING HUB	1	
1-8#	8201015003	BALANCING PLATE	1.....	PURCHASE ITEM 1-11 AS A SET
1-9#	0012116045	HEX HEAD BOLT	10	
1-10#	0042616000	WASHER, LOCK	10	
1-11#	0601000209	BALANCING WEIGHT KIT	1	
1-12#	C3112500004	BEARING FLANGE	1	
1-13#	0071906315	BEARING	1	
2	C2163400003	COUPLING RING.....	1.....	DCA300SSC
2	M5163400103	COUPLING RING.....	1.....	DCA300SSCU
3	0343206200	HEX HEAD BOLT	8	
4	0043606000	WASHER, LOCK	8	
5#	0010312040	HEX HEAD BOLT	12	
5A#	0042512000	WASHER, LOCK	12	
6	C2130100103	STATOR ASSY	1	
6-1	0226200430	RUBBER SEAL	1	
6-2	8201323004	CLAMPER	1	
6-3	0223300140	RUBBER SEAL	1	
6-4	8201323103	CLAMPER	1	
6-5	0221200350	RUBBER SEAL	1	
6-6	0010110035	HEX HEAD BOLT	2	
6-6A	0041210000	WASHER, FLAT	2	
6-7	C2132200003	COVER	1	
6-8	0226000275	RUBBER SEAL	2	
6-9	0225000500	RUBBER SEAL	1	
6-10	0017106016	HEX HEAD BOLT	6	
6-11	0601850144	GROMMET	1	
7	C3154000002	END BRACKET	1	
8	C3138000003	FIELD ASSY, EXCITER	1	
9	0012110080	HEX HEAD BOLT	4	
9A	0042610000	WASHER, LOCK	4	
9B	0041210000	WASHER, FLAT	4	
10	0017112045	HEX HEAD BOLT	8	
11	C3154300104	COVER, BEARING	1	
12	C3154300004	GASKET, BEARING	1	
13	0010106060	HEX HEAD BOLT	4	
13A	0040006000	WASHER, LOCK	4	
13B	0041206000	WASHER, FLAT	4	

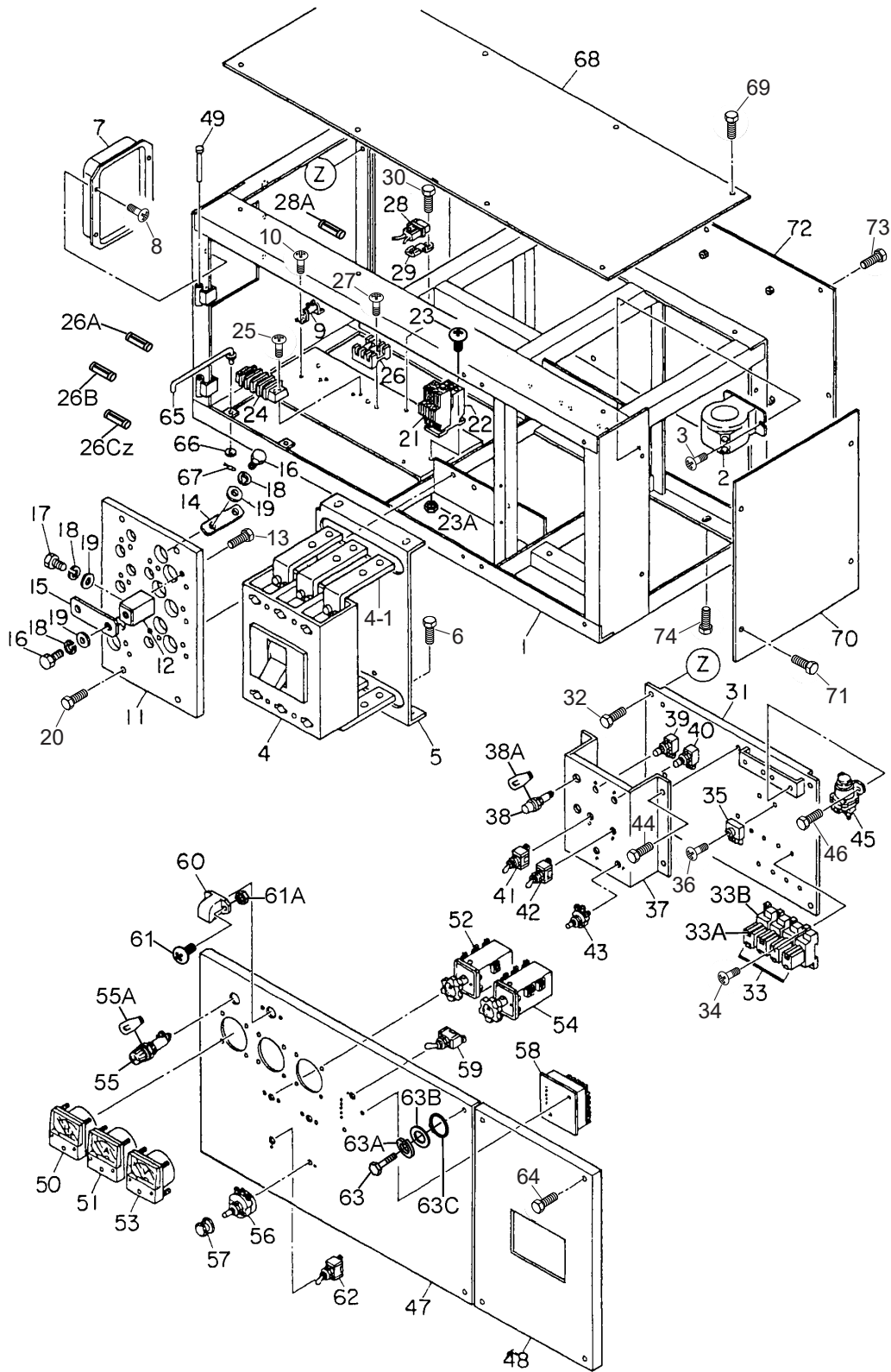
GENERATOR ASSY. (CONT'D.)



GENERATOR ASSY. (CONT'D.)

<u>NO.</u>	<u>PART NO.</u>	<u>PART NAME</u>	<u>QTY.</u>	<u>REMARKS</u>
14	C3154400003	SUCTION COVER	1	
15	0017106015	HEX HEAD BOLT	8	
16	C3164600103	COUPLING ADAPTER	1	
17	0010310030	HEX HEAD BOLT	12	
17A	0042510000	WASHER, LOCK	12	
18	C2163700004	SPACER, BEARING	1	
19	0070506208	BEARING, 6208ZZ	1	
20	0010312040	HEX HEAD BOLT	16	
20A	0042512000	WASHER, LOCK	16	
21	C3132300014	COVER, FAN	1	
22	0010106030	HEX HEAD BOLT	1	
22A	0041206000	WASHER, FLAT	1	
22B	0600815000	NUT	1	
23	0605000012	RUBBER SUSPENSION	2	
24	0030020000	HEX NUT	4	
24A	0040020000	WASHER, LOCK	4	

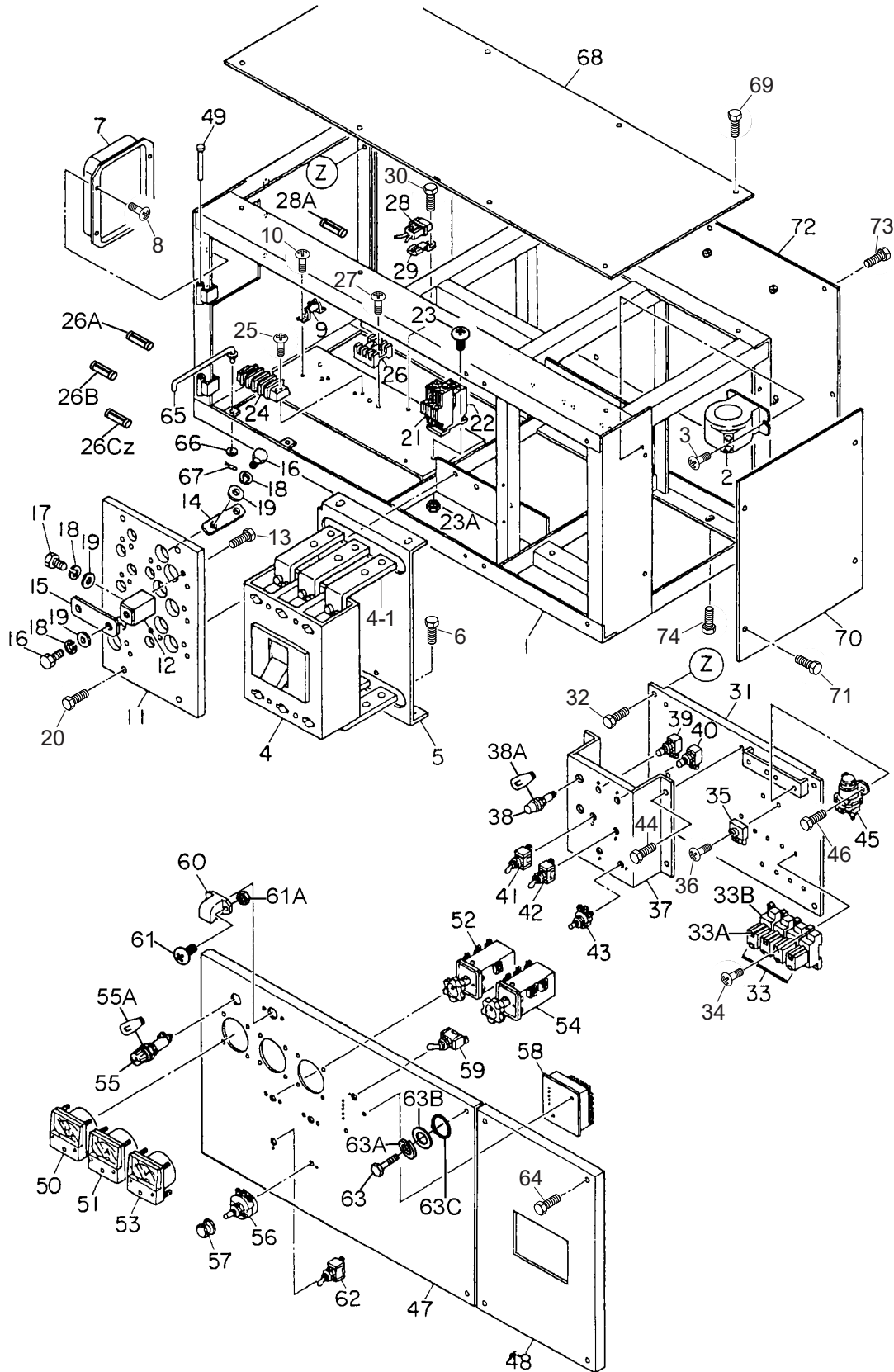
CONTROL BOX ASSY.



CONTROL BOX ASSY.

<u>NO.</u>	<u>PART NO.</u>	<u>PART NAME</u>	<u>QTY.</u>	<u>REMARKS</u>
1	M5213000002	CONTROL BOX	1	
2	0601809659	CURRENT TRANSFORMER	3	
3	0027106015	MACHINE SCREW	6	
4	0601807513	CIRCUIT BREAKER, 800A	1	DCA300SSC
4	0601807519	CIRCUIT BREAKER, 800A	1	DCA300SSCU
4-1	0601827410	BUS BAR (SET)	2	DCA300SSCU
5	C2261600204	BRACKET, CIRCUIT BREAKER	1	
6	0017108020	HEX HEAD BOLT	4	
7	0601820604	AUTOMATIC VOLTAGE REGULATOR	1	
8	0027106015	MACHINE SCREW	4	
9	0601842468	RESISTOR, 5W 150 OHM	1	
10	0027103010	MACHINE SCREW	2	
11	C2274000103	CHANGE- OVER BOARD, VOLTAGE	1	
12	8201852104	CHANGE TERMINAL	10	
13	0017108030	HEX HEAD BOLT	20	
14	C2277200004	TERMINAL PLATE	3	
15	8201853104	CHARGE PLATE	6	
16	8201852504	HEX HEAD BOLT	13	
17	0801830704	HEX HEAD BOLT	13	
18	0040012000	WASHER, LOCK	26	
19	0041412000	WASHER, FLAT	26	
20	0017110030	HEX HEAD BOLT	4	
21	0601820847	OVER CURRENT RELAY	1	
22	0601820840	OVER CURRENT RELAY	1	
23	0027104016	MACHINE SCREW	2	
23A	0207004000	HEX NUT	2	
24	0601815153	TERMINAL BOARD	1	
25	0027104016	MACHINE SCREW	2	
26	0601802218	HOLDER, FUSE	1	
26A	0601802149	FUSE (LEFT SIDE), 10A	1	
26B	0601802131	FUSE (CENTER), 1A	1	
26C	0601802133	FUSE (RIGHT), 5A	1	
27	0027103020	MACHINE SCREW	2	
28	C3358201704	FUSE HOLDER ASSY	1	
28A	0601806644	FUSE, 30A	1	
29	0601802410	BRACKET, FUSE HOLDER	1	
30	0017106016	HEX HEAD BOLT	1	
31	M5260500003	SET PANEL , ELECTRIC PARTS	1	
32	0017108020	HEX HEAD BOLT	4	
33	LY2DUS24V	RELAY	4	REPLACES P/N 0601827655
33A	PTF08A	SOCKET	4	REPLACES P/N 0601823109
33B	PYCA1	HOLDER	4	REPLACES P/N 0601824400
34	0027104020	MACHINE SCREW	8	
35	0601823240	RECTIFIER	2	
36	0027104020	MACHINE SCREW	2	
37	M5260500204	BRACKET	1	
38	0602103090	DIAGNOSTIC LAMP	2	
36	0027104020	MACHINE SCREW	2	

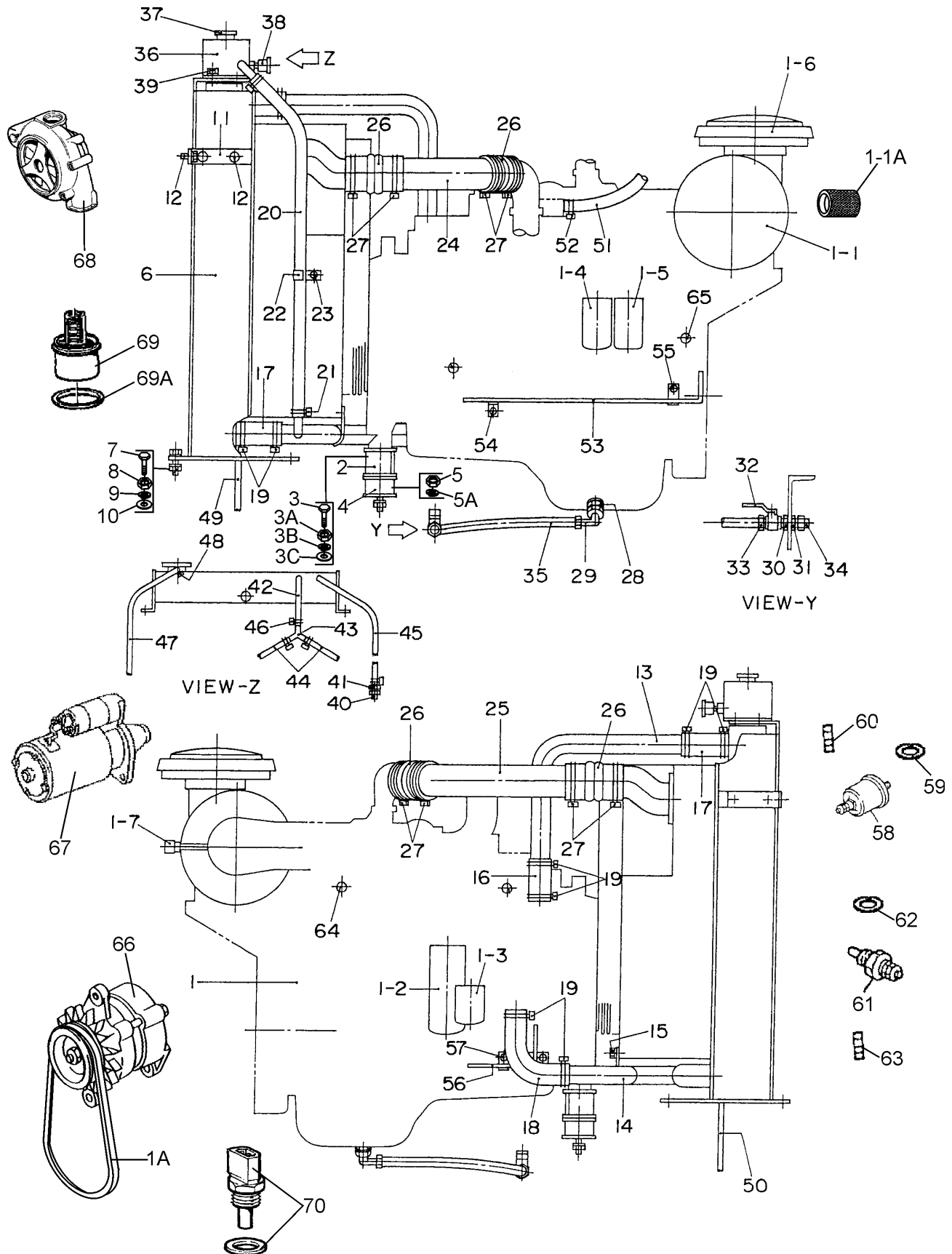
CONTROL BOX ASSY. (CONT'D.)



CONTROL BOX ASSY. (CONT'D.)

<u>NO.</u>	<u>PART NO.</u>	<u>PART NAME</u>	<u>QTY.</u>	<u>REMARKS</u>
37	M5260500204	BRACKET	1	
38	0602103090	DIAGNOSTIC LAMP	2	
38A	0601810244	BULB, DC28V	2	
39	0601831670	DIAGNOSTIC BUTTON	1	
40	0601831205	RESET BUTTON	1	
41	0601830746	LOW IDLE SPEED SWITCH	1	
42	0601830710	DIAGNOSTIC SWITCH	1	
43	0601840009	RHEOSTAT, 2W 5k OHM	1	
44	0017106016	HEX HEAD BOLT	4	
45	0602201455	RELAY, HEATER	1	
46	0017106016	HEX HEAD BOLT	2	
47	C2224000503	CONTROL PANEL	1	
48	C2224001504	CONTROL PANEL	1	
49	0605011211	PIN	2	
50	0601807622	FREQUENCY METER, 45~65Hz 220V	1	
51	0601806979	AC AMMETER, 0~1000A	1	
52	0601801040	CHANGE-OVER SWITCH, AMMETER	1	
53	0601806887	AC VOLTMETER, 0~600V	1	
54	0601801041	CHANGE- OVER SWITCH, VOLTMETER	1	
55	0601810072	PILOT LAMP	1	
55A	0601810261	BULB, 13W	1	
56	0601840073	RHEOSTAT (VR), 2W 1K OHM	1	
57	0601840121	KNOB	1	
58	ECU9988N220V	ENGINE CONTROLLER.....	1	REPLACES P/N 0602202545
59	0601830765	SWITCH	1	
60	0601810171	PANEL LIGHT, DC24V	1	
61	0027104020	MACHINE SCREW	2	
61A	0207004000	HEX NUT	2	
62	0601830710	SWITCH, PANEL LIGHT	1	
63	C9221100004	HEX HEAD BOLT	2	
63A	0040008000	WASHER, LOCK	2	
63B	0041208000	WASHER, FLAT	2	
63C	0080200007	SNAP RING	2	
64	0017108040	HEX HEAD BOLT	4	
65	3871824004	STOPPER, CONTROL PANEL	1	
66	0041206000	WASHER, FLAT	1	
67	0605010502	SNAP PIN	1	
68	C2214500004	COVER, CONTROL BOX	1	
69	0017108020	HEX HEAD BOLT	8	
70	C2214300004	SIDE PANEL, CONTROL BOX	1	
71	0017108020	HEX HEAD BOLT	4	
72	C2214400504	PANEL, CONTROL BOX	1	
73	0017108020	HEX HEAD BOLT	9	
74	0017110025	HEX HEAD BOLT	4	

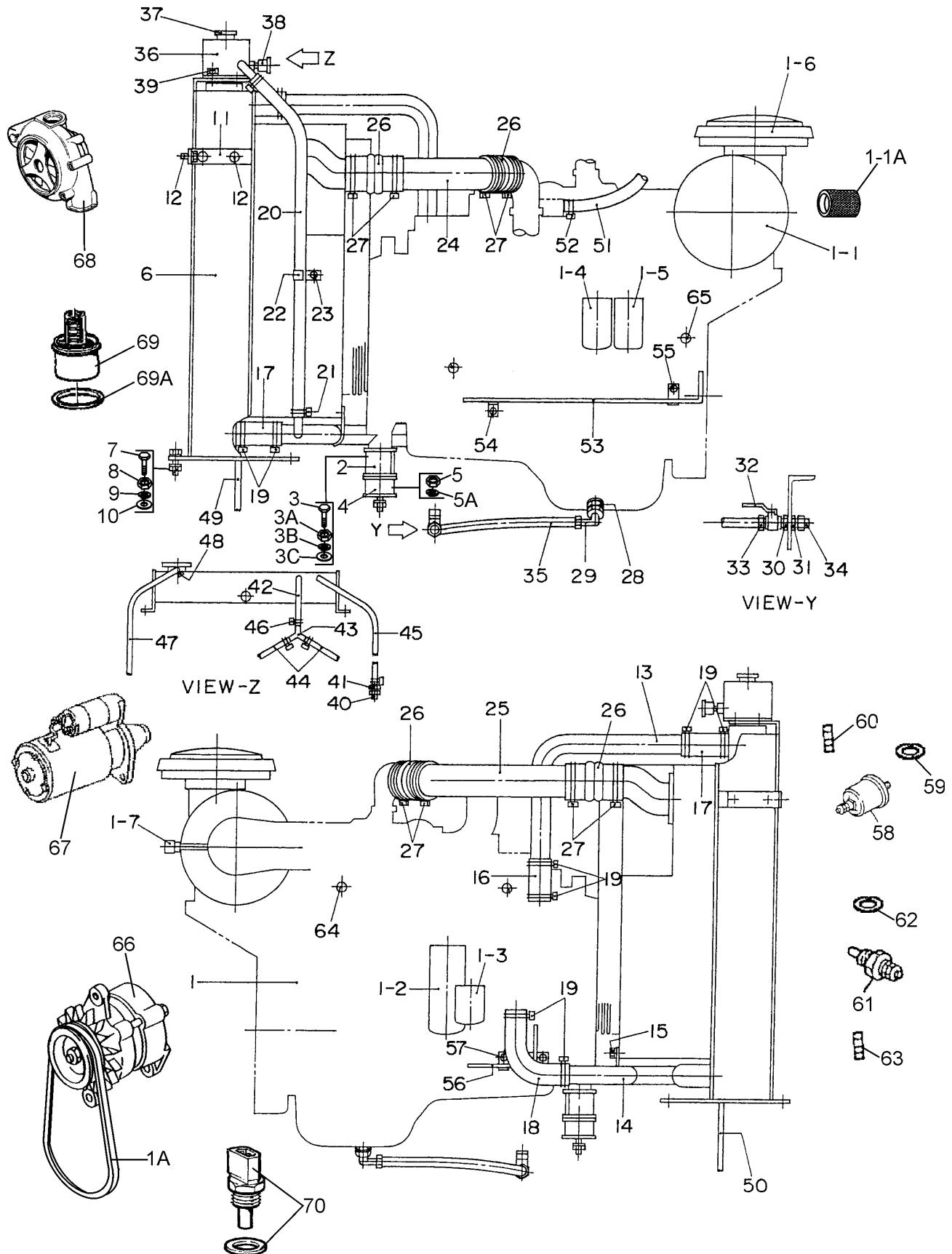
ENGINE AND RADIATOR ASSY.



ENGINE AND RADIATOR ASSY.

<u>NO.</u>	<u>PART NO.</u>	<u>PART NAME</u>	<u>QTY.</u>	<u>REMARKS</u>
1	C2923200204	ENGINE, QSL9-G3	1	
1A	0602015244	BELT, FAN	1	
1-1	0602046638	ELEMENT, AIR CLEANER (OUTER)	1	
1-1A	0602046639	ELEMENT, AIR CLEANER (INNER)	1	
1-2	0602041224	CARTRIDGE, OIL FILTER	1	
1-3	0602045193	CARTRIDGE, COOLANT FILTER	1	
1-4	0602042588	CARTRIDGE, FUEL FILTER	1	
1-5	0602042589	CARTRIDGE, FUEL WATER SEPARATOR	1	
1-6	0602040759	CAP, AIR CLEANER	1	
1-7	0602040679	DUST SENSOR	1	
2	M5303200004	ENGINE FOOT	1	
3	0010118050	HEX HEAD BOLT	2	
3A	0030018000	HEX NUT	2	
3B	0040018000	WASHER, LOCK	2	
3C	0041618000	WASHER, FLAT	4	DCA300SSC
3C	0041218000	WASHER, FLAT	4	DCA300SSCU
4	0605000011	RUBBER SUSPENSION	2	
5	0030016000	HEX NUT	4	
5A	0040016000	WASHER, LOCK	4	
6	0602012737	RADIATOR / INTERCOOLER	1	
7	0010116050	HEX HEAD BOLT	4	
8	0030016000	HEX NUT	4	
9	0040016000	WASHER, LOCK	4	
10	0041216000	WASHER, FLAT	8	
11	C2311101104	BRACKET, RADIATOR	2	DCA300SSC
11	M5310200204	BRACKET, RADIATOR	2	DCA300SSCU
12	0017112025	HEX HEAD BOLT	6	
13	0602013260	RADIATOR PIPE	1	
14	0602014820	RADIATOR PIPE	1	
15	0602011500	HEX HEAD BOLT	2	
16	0602015120	RADIATOR HOSE, UPPER ENGINE	1	
17	0602015121	RADIATOR HOSE, UPPER/LOWER RAD.	2	
18	0602015122	RADIATOR HOSE, LOWER	1	
19	0602015301	HOSE BAND	16	
20	0602015123	RADIATOR HOSE	1	
21	0602015302	HOSE BAND	2	
22	0602015410	CLAMP	1	
23	0602011500	HEX HEAD BOLT	1	
24	0602014821	INTER-COOLER PIPE	1	
25	0602013261	INTER-COOLER PIPE	1	
26	0602015124	INTER-COOLER PIPE	4	
27	0602015303	HOSE BAND	8	
28	0602022563	ADAPTER	1	
29	0602022561	90 DEGREE ELBOW	1	
30	0603306590	CONNECTOR	1	
31	0603300285	LOCKNUT	1	

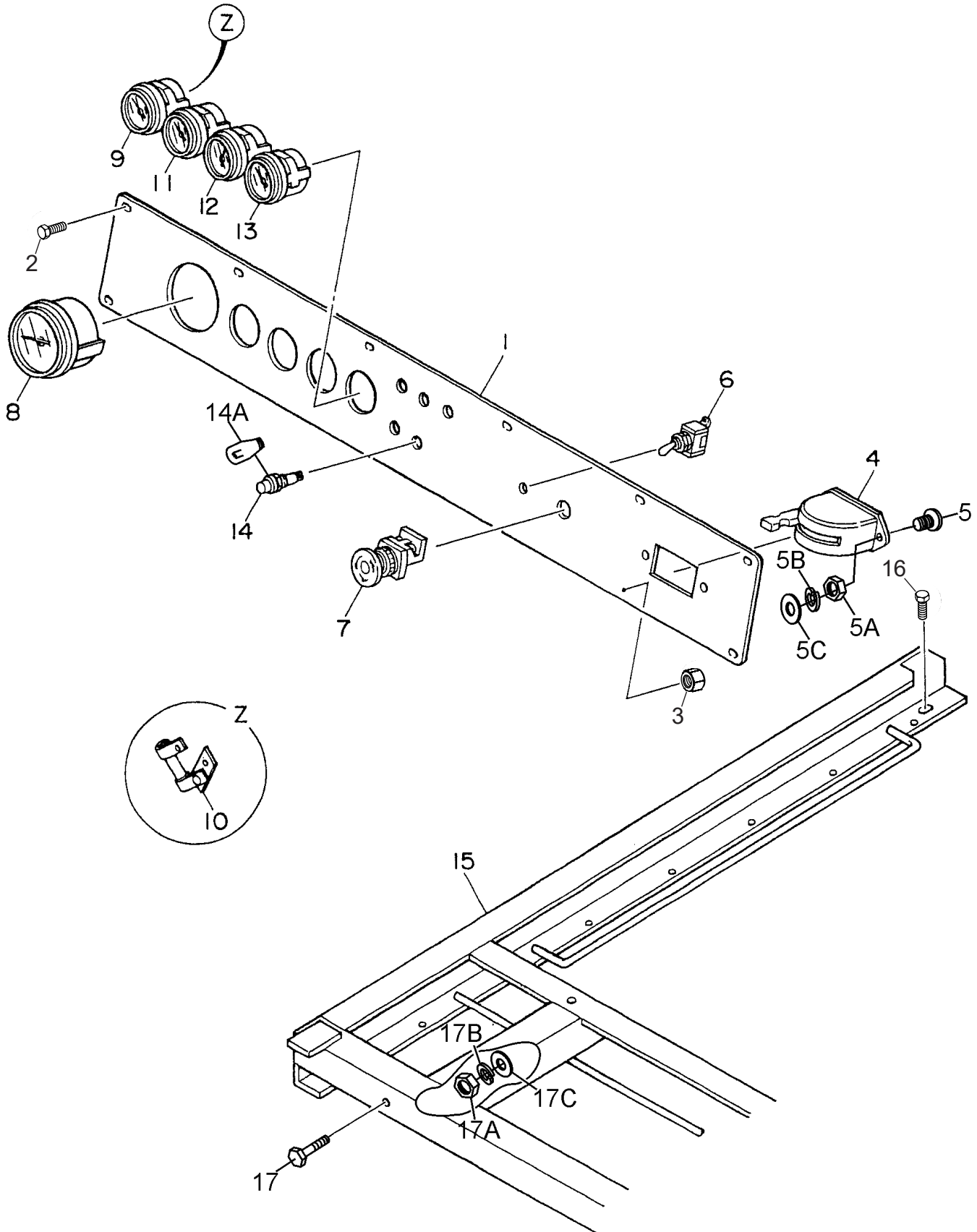
ENGINE AND RADIATOR ASSY. (CONT'D.)



ENGINE AND RADIATOR ASSY. (CONT'D.)

<u>NO.</u>	<u>PART NO.</u>	<u>PART NAME</u>	<u>QTY.</u>	<u>REMARKS</u>
32	0605511395	VALVE	1	
33	0603306395	HOSE JOINT	1	
34	0602021070	CAP	1	
35	0269200800	DRAIN HOSE	1	
36	0602010220	RESERVER TANK	1	
37	0602011023	CAP	1	
38	813NLU0000T	COOLANT LEVEL SWITCH	1	
39	0602011500	HEX HEAD BOLT.....	4	DCA300SSC
39	0016910025	HEX HEAD BOLT.....	4	DCA300SSCU
40	0602015500	BUSHING	1	
41	0602013497	HOSE JOINT	1	
42	0602014110	HOSE (L=250)	1	
43	0602013498	JOINT	1	
44	0602014110	HOSE (L=325)	2	
45	0602014110	HOSE (L=1100)	1	
46	0602015300	HOSE BAND	8	
47	0193601800	HOSE	1	
48	0605515106	HOSE BAND	1	
49	0193601100	HOSE	1	
50	0193600550	HOSE	1	
51	0269501850	HOSE	1	
52	0605515067	HOSE BAND.....	2	DCA300SSC
52	0605515149	HOSE BAND.....	2	DCA300SSCU
53	C2357300003	CLAMPER ROD.....	1	DCA300SSC
53	M5357300003	CLAMPER ROD.....	1	DCA300SSCU
54	0017112025	HEX HEAD BOLT	1	
55	0017116030	HEX HEAD BOLT	1	
56	C2357300104	CLAMPER ROD	1	
57	0017112025	HEX HEAD BOLT	2	
58	0602122272	OIL PRESSURE UNIT	1	
59	M9200101504	ADAPTER	1	
60	0803000104	PACKING.....	1	DCA300SSC
60	M9200001104	PACKING.....	1	DCA300SSCU
61	0602123267	WATER TEMPERATURE UNIT.....	1	DCA300SSC
61	0602123261	WATER TEMPERATURE UNIT.....	1	DCA300SSCU
62	0602015501	ADAPTER		
63	9095720140	PACKING.....	1	REPLACES P/N 0602021109
64	0602210189	WATER TEMPERATURE SWITCH	1	
65	0602120481	PICK- UP TACHOMETER	1	
66	4993343	ALTERNATOR	1	
67	3102763	STARTER	1	
68	3973114	WATER PUMP	1	
69	3940632	THERMOSTAT W/O	1	
69A	3945603	GASKET, THERMOSTAT	1	
70	4921744	SENSOR, OIL PRESSURE	1	

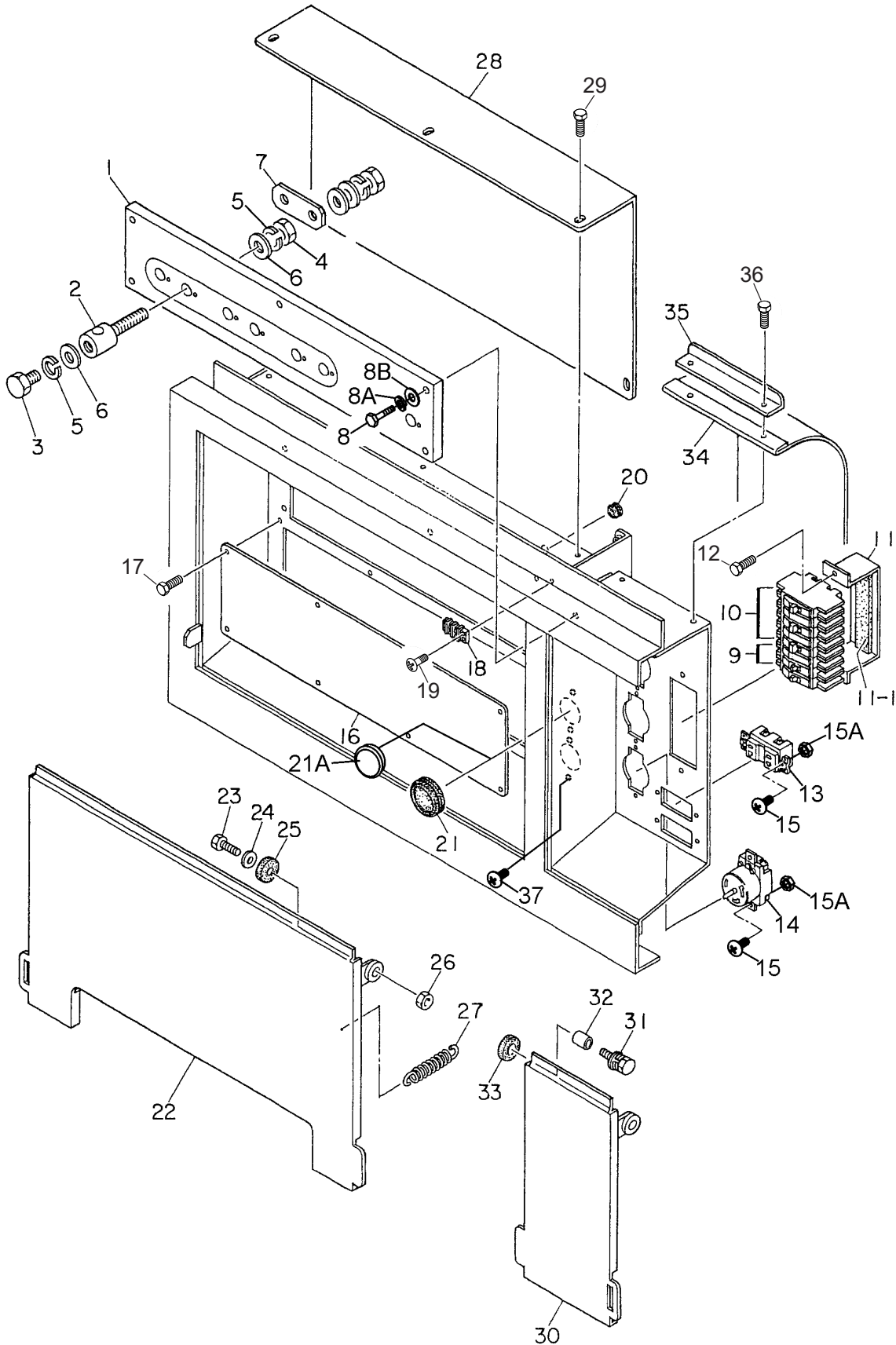
ENGINE OPERATING PANEL ASSY.



ENGINE OPERATING PANEL ASSY.

<u>NO.</u>	<u>PART NO.</u>	<u>PART NAME</u>	<u>QTY.</u>	<u>REMARKS</u>
1	C2351101903	OPERATING PANEL.....	1	DCA300SSC
1	M5351100003	OPERATING PANEL.....	1	DCA300SSCU
2	0017106020	HEX HEAD BOLT.....	8	DCA300SSC
2	0017106016	HEX HEAD BOLT.....	8	DCA300SSCU
3	0207006000	HEX NUT	4	
4	0602101000	BATTERY SWITCH	1	
5	0021008080	MACHINE SCREW	2	
5A	0030004000	HEX NUT	2	
5B	0040008000	WASHER, LOCK	2	
5C	0041608000	WASHER, FLAT	2	
6	0601830710	ENGINE SPEED SWITCH	1	
7	0601831557	EMERGENCY STOP BUTTON	1	
8	0602120095	TACHOMETER	1	
9	0602122093	OIL PRESSURE GAUGE	1	
10	0601842450	VOLTAGE DIVIDER	1	
11	0602123092	WATER TEMPERATURE GAUGE	1	
12	0602121081	CHARGING AMMETER	1	
13	0602125091	FUEL GAUGE	1	
14	0602103090	ALARM LAMP	5	
14A	0601810244	BULB, DC28V	5	
15	M5483000003	SET FRAME	1	
16	0017110030	HEX HEAD BOLT.....	2	DCA300SSC
16	0016910030	HEX HEAD BOLT.....	2	DCA300SSCU
17	0017110030	HEX HEAD BOLT	3	
17A	0030010000	HEX NUT	3	
17B	0040010000	WASHER, LOCK	3	
17C	0041610000	WASHER, FLAT	6	

OUTPUT TERMINAL ASSY.



OUTPUT TERMINAL ASSY.

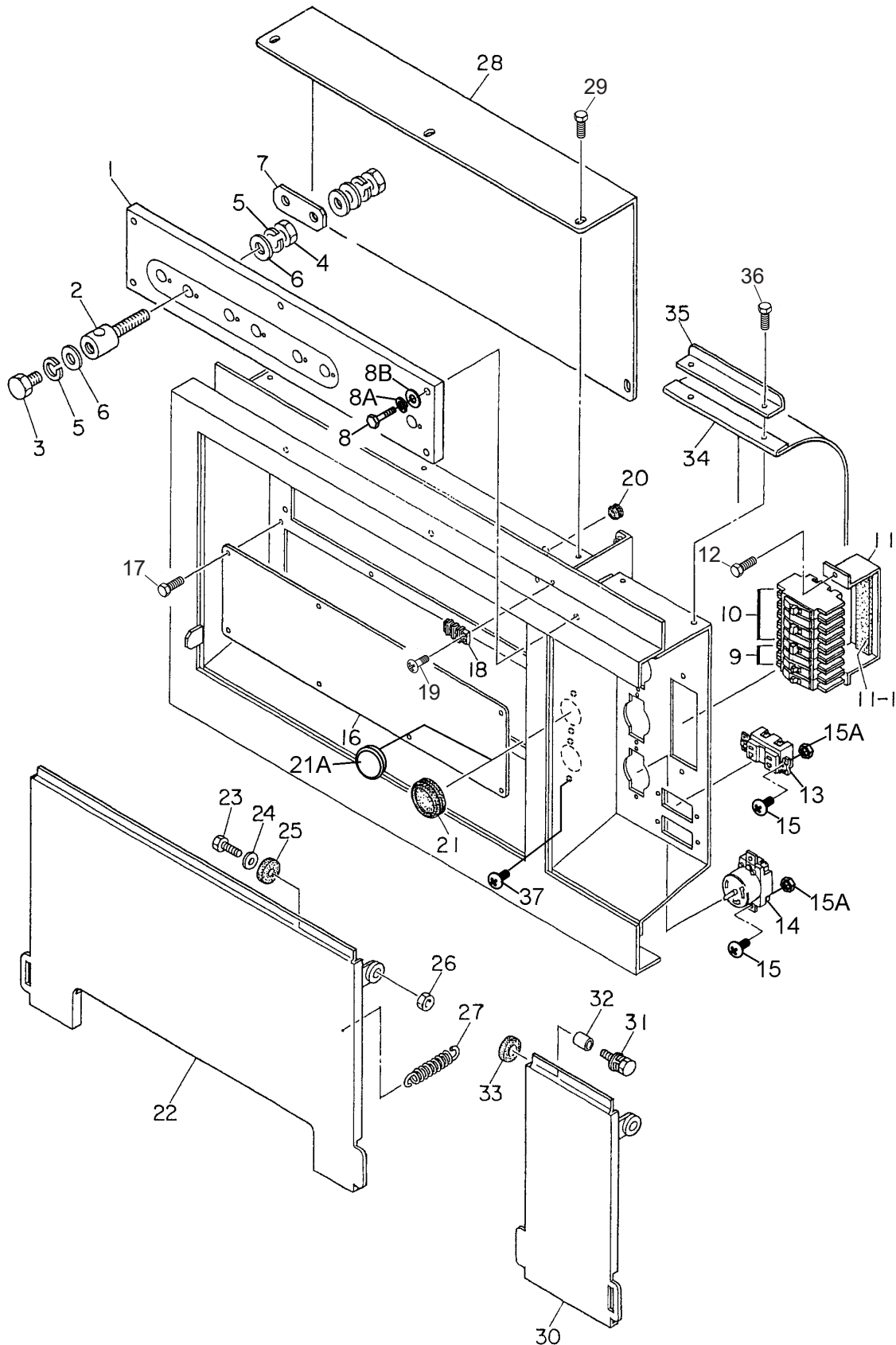
<u>NO.</u>	<u>PART NO.</u>	<u>PART NAME</u>	<u>QTY.</u>	<u>REMARKS</u>
1	C2231700403	SET BOARD, OUTPUT TERMINAL.....	1	DCA300SSC
1	M5230700003	SET BOARD, OUTPUT TERMINAL.....	1	DCA300SSCU
2	C0277500004	OUTPUT TERMINAL.....	8	DCA300SSC
2	M9220100914	OUTPUT TERMINAL.....	8	DCA300SSCU
3	0801830904	HEX HEAD BOLT.....	8	DCA300SSC
3	9220101004	HEX HEAD BOLT.....	8	DCA300SSCU
4	0039320000	HEX NUT	16	
5	0040020000	WASHER, LOCK	24	
6	0041420000	WASHER, FLAT	32	
7	3501860604	TERMINAL PLATE.....	3	DCA300SSC
7	M5233200004	TERMINAL PLATE.....	3	DCA300SSCU
8	0019110050	HEX HEAD BOLT	5	
8A	0042310000	WASHER, LOCK	5	
8B	0042410000	WASHER, FLAT	5	
9	0601808803	CIRCUIT BREAKER, 1P 20A	2	
10	0601808804	CIRCUIT BREAKER, 2P 50A	3	
11	C3261600704	BRACKET, CIRCUIT BREAKER.....	1	DCA300SSC
11	M4260600104	BRACKET, CIRCUIT BREAKER.....	1	DCA300SSCU
11-1	0221200150	RUBBER CUSHION	1	
12	0019206020	HEX HEAD BOLT	2	
13	0601814013	RECEPTACLE	2	
14	0601811034	RECEPTACLE, CS6369	3	
15	0025304015	MACHINE SCREW.....	10	DCA300SSC
15	0025304016	MACHINE SCREW.....	10	DCA300SSCU
15A	0207004000	HEX NUT	10	
16	C2234500104	COVER.....	1	DCA300SSC
16	M4236400204	COVER.....	1	DCA300SSCU
17	0019206020	HEX HEAD BOLT.....	8	DCA300SSC
17	0016906016	HEX HEAD BOLT.....	8	DCA300SSCU
18	0601815194	TERMINAL BOARD	1	
19	0025304015	MACHINE SCREW.....	2	DCA300SSC
19	7538070	MACHINE SCREW.....	2	DCA300SSCU
20	0601850275	GROMMET	1	
21	0601851780	GROMMET.....	2	DCA300SSC
21A	0601851780	BLIND PLUG.....	1	DCA300SSCU

ADD THE FOLLOWING DIGITS AFTER THE PART NUMBER WHEN ORDERING ANY PAINTED PANEL TO INDICATE COLOR OF UNIT:

- | | |
|-----------------|----------------------|
| 1-ORANGE | 6-CATERPILLAR YELLOW |
| 2-WHITE | 7-CATO GOLD |
| 3-SPECTRUM GREY | 8-RED |
| 4-SUNBELT GREEN | 9-DESERT TAN |
| 5-BLACK | |

THE SERIAL NUMBER MAY BE REQUIRED.

OUTPUT TERMINAL ASSY. (CONT'D.)



OUTPUT TERMINAL ASSY. (CONT'D.)

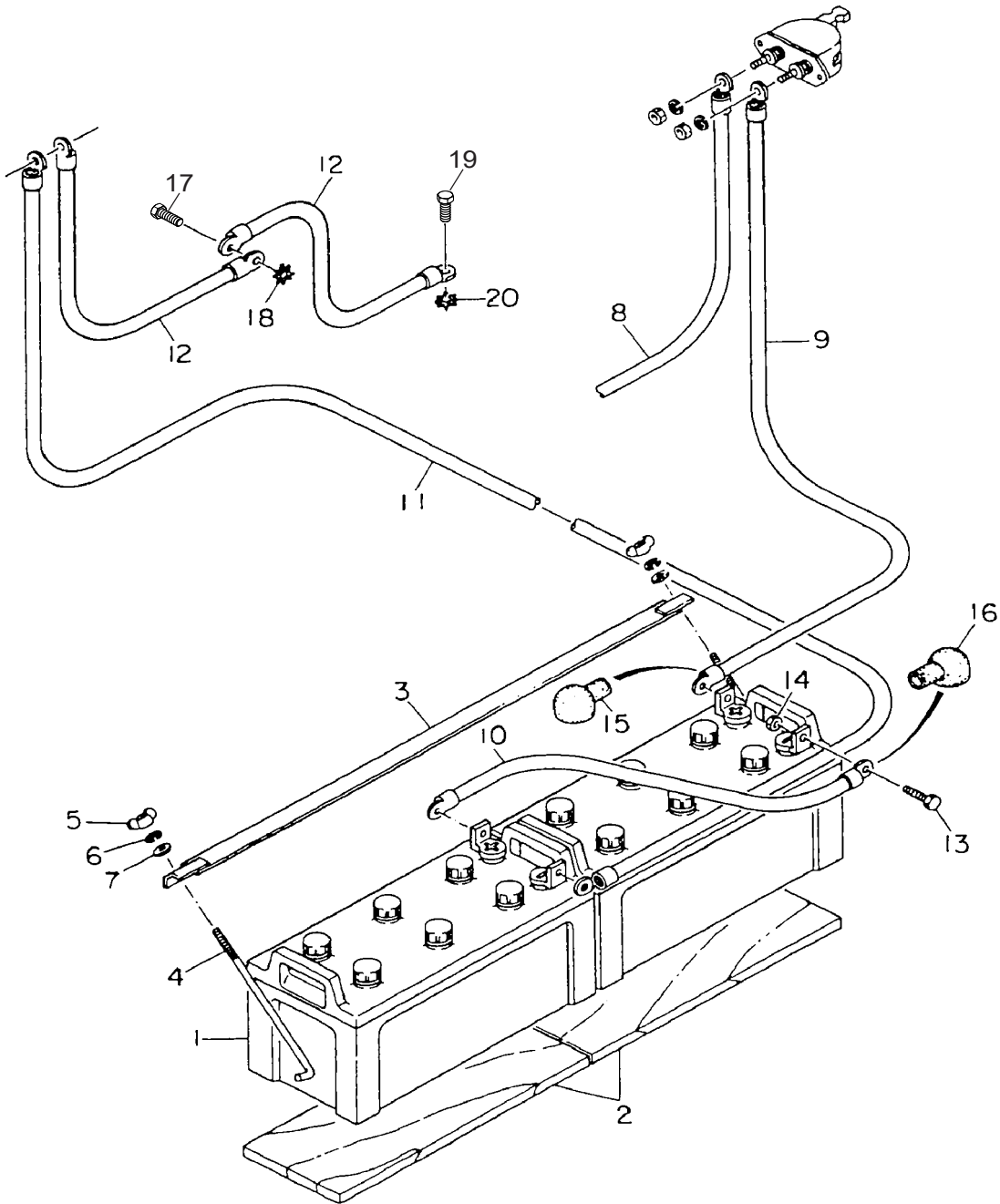
<u>NO.</u>	<u>PART NO.</u>	<u>PART NAME</u>	<u>QTY.</u>	<u>REMARKS</u>
22	C2237102303	COVER, OUTPUT TERMINAL.....	1	DCA300SSC
22	M5236100003	COVER, OUTPUT TERMINAL.....	1	DCA300SSCU
23	0019112045	HEX HEAD BOLT	2	
24	0042412000	WASHER, FLAT	4	
25	0605015604	STAY RUBBER.....	2	DCA300SSC
25	M9310200004	STAY RUBBER.....	2	DCA300SSCU
26	0205012000	HEX NUT	2	
27	0845043704	SPRING.....	2	DCA300SSC
27	M9210000204	SPRING.....	2	DCA300SSCU
28	C2237101204	COVER.....	1	DCA300SSC
28	M5236100204	COVER.....	1	DCA300SSCU
29	0017108020	HEX HEAD BOLT.....	7	DCA300SSC
29	0016908020	HEX HEAD BOLT.....	7	DCA300SSCU
30	C2237102403	COVER, OUTPUT TERMINAL.....	1	DCA300SSC
30	M5236100104	COVER, OUTPUT TERMINAL.....	1	DCA300SSCU
31	0019210030	HEX HEAD BOLT.....	2	DCA300SSC
31	014210040	HEX HEAD BOLT.....	2	DCA300SSCU
32	0845054204	COLLAR.....	2	DCA300SSC
32	M9116000004	COLLAR.....	2	DCA300SSCU
33	0805015604	STAY RUBBER.....	1	DCA300SSC
33	M9310200004	STAY RUBBER.....	1	DCA300SSCU
34	C2237101504	COVER.....	1	DCA300SSC
34	M4236100604	COVER.....	1	DCA300SSCU
35	C2237500104	BRACKET.....	1	DCA300SSC
35	M4236400304	BRACKET.....	1	DCA300SSCU
36	0017106020	HEX HEAD BOLT.....	2	DCA300SSC
36	0016906016	HEX HEAD BOLT.....	2	DCA300SSCU
37	7538070	MACHINE SCREW.....	4	DCA300SSCU

ADD THE FOLLOWING DIGITS AFTER THE PART NUMBER WHEN ORDERING ANY PAINTED PANEL TO INDICATE COLOR OF UNIT:

1-ORANGE	6-CATERPILLAR YELLOW
2-WHITE	7-CATO GOLD
3-SPECTRUM GREY	8-RED
4-SUNBELT GREEN	9-DESERT TAN
5-BLACK	

THE SERIAL NUMBER MAY BE REQUIRED.

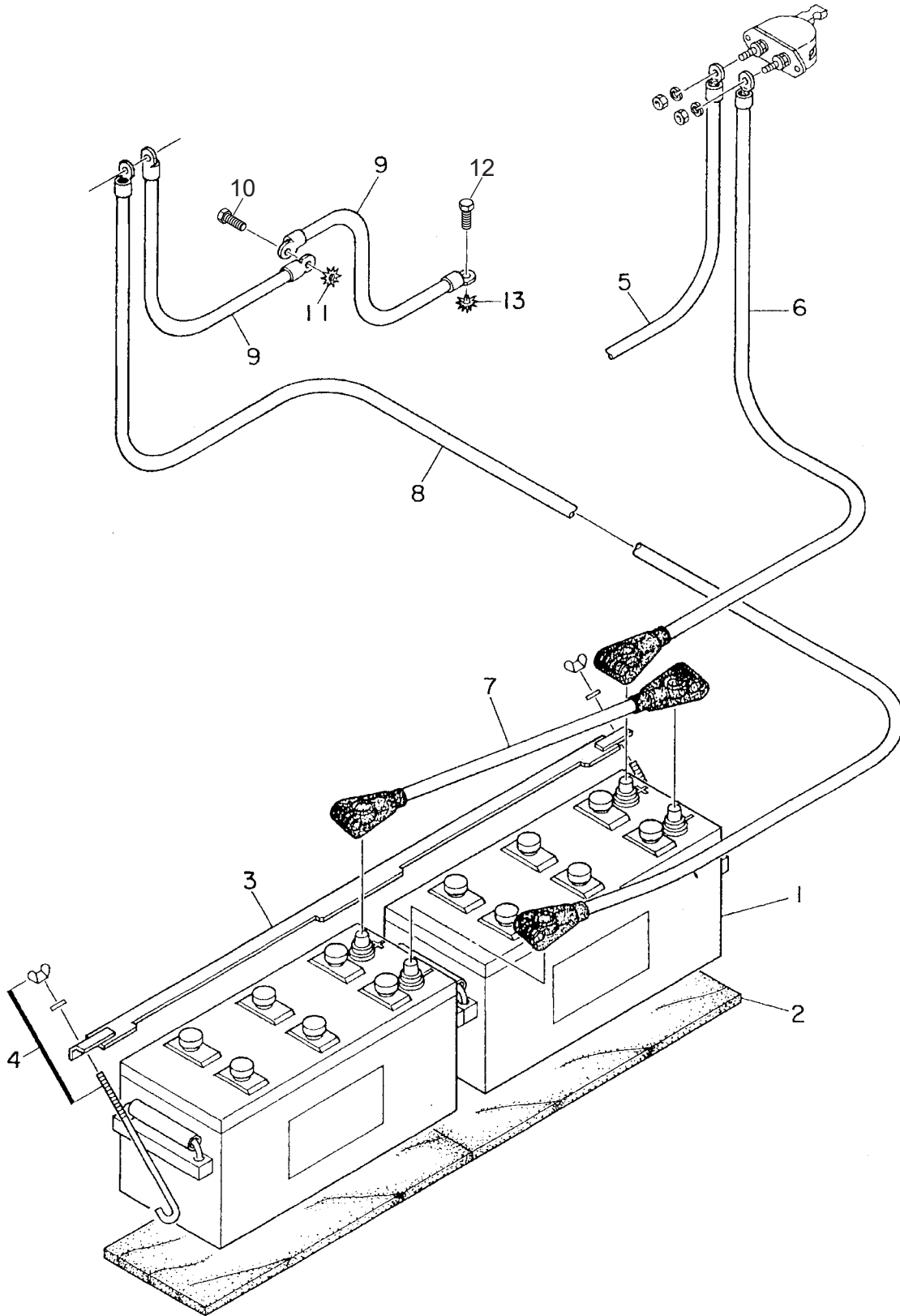
BATTERY ASSY. (DCA300SSC)



BATTERY ASSY. (DCA300SSC)

<u>NO.</u>	<u>PART NO.</u>	<u>PART NAME</u>	<u>QTY.</u>	<u>REMARKS</u>
1	0165511551	BATTERY	2	
2	C9109100604	BATTERY SHEET	2	
3	3972250004	BATTERY BAND	1	
4	0805002904	BATTERY BOLT	2	
5	0037808000	WING NUT	2	
6	0040008000	WASHER, LOCK	2	
7	0041608000	WASHER, FLAT	2	
8	C2346600404	BATTERY CABLE	1	
9	C2346600304	BATTERY CABLE	1	
10	C2347600704	BATTERY CABLE	1	
11	C2346600504	BATTERY CABLE	1	
12	C2346200004	EARTH CABLE	2	
13	0347010030	HEX HEAD BOLT	4	
14	0208110000	HEX NUT	4	
15	0845040414	TERMINAL CAP (+)	2	
16	0845041304	TERMINAL CAP (-)	2	
17	0017116030	HEX HEAD BOLT	1	
18	0040516000	TOOTHED WASHER	1	
19	0017112025	HEX HEAD BOLT	1	
20	0040512000	TOOTHED WASHER	1	

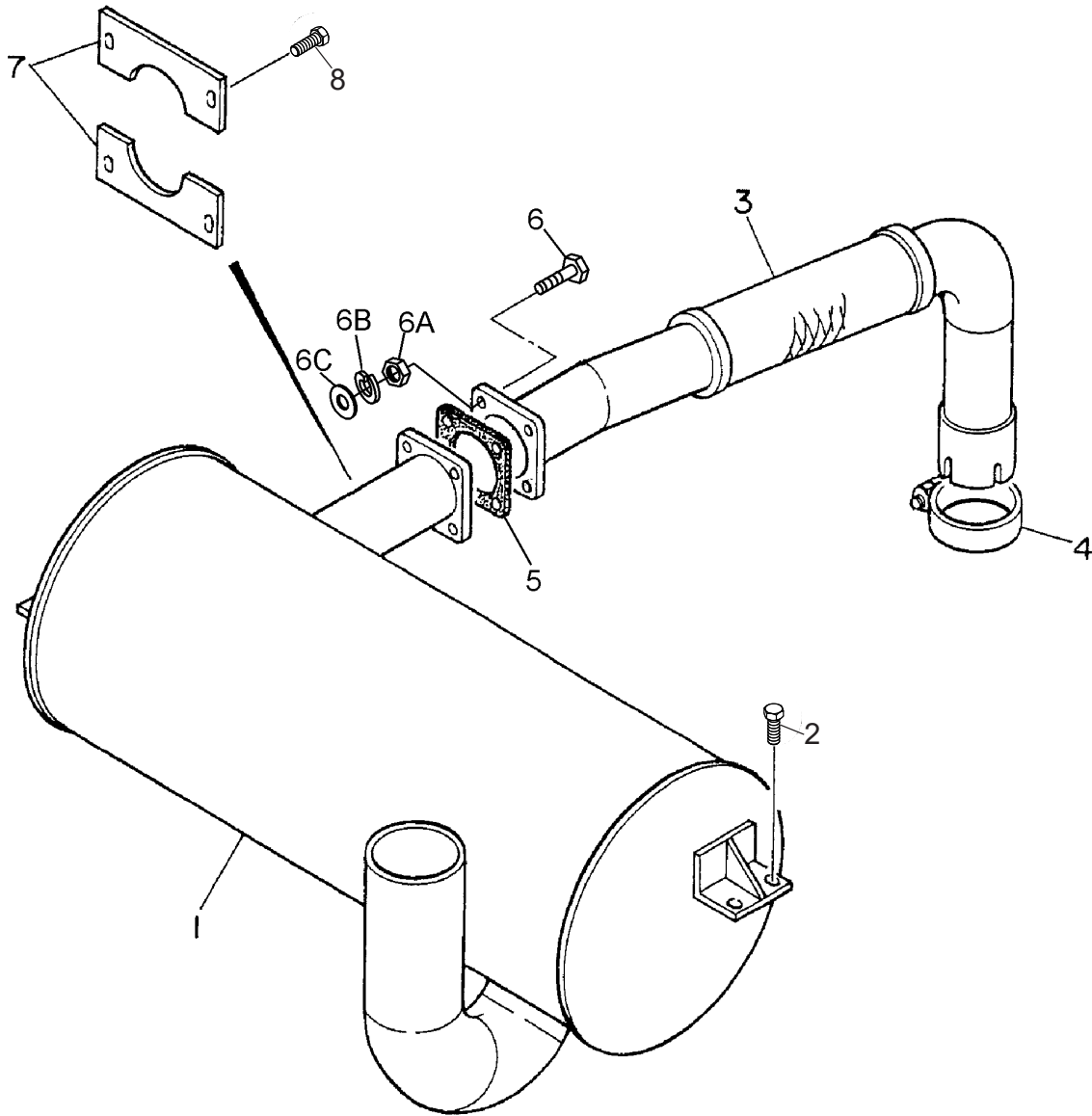
BATTERY ASSY. (DCA300SSCU)



BATTERY ASSY. (DCA300SSCU)

<u>NO.</u>	<u>PART NO.</u>	<u>PART NAME</u>	<u>QTY.</u>	<u>REMARKS</u>
1	0602220196	BATTERY	2	
2	M9310500404	BATTERY SHEET	2	
3	M9104000004	BATTERY BAND	1	
4	0602220921	BATTERY BOLT SET	2	
5	M5346900404	BATTERY CABLE	1	
6	M5347900104	BATTERY CABLE	1	
7	M4346400314	BATTERY CABLE	1	
8	M5346900504	BATTERY CABLE	1	
9	M5346200104	EARTH CABLE	2	
10	0017116030	HEX HEAD BOLT	1	
11	0040516000	TOOTHED WASHER	1	
12	0017112025	HEX HEAD BOLT	1	
13	0040512000	TOOTHED WASHER	1	

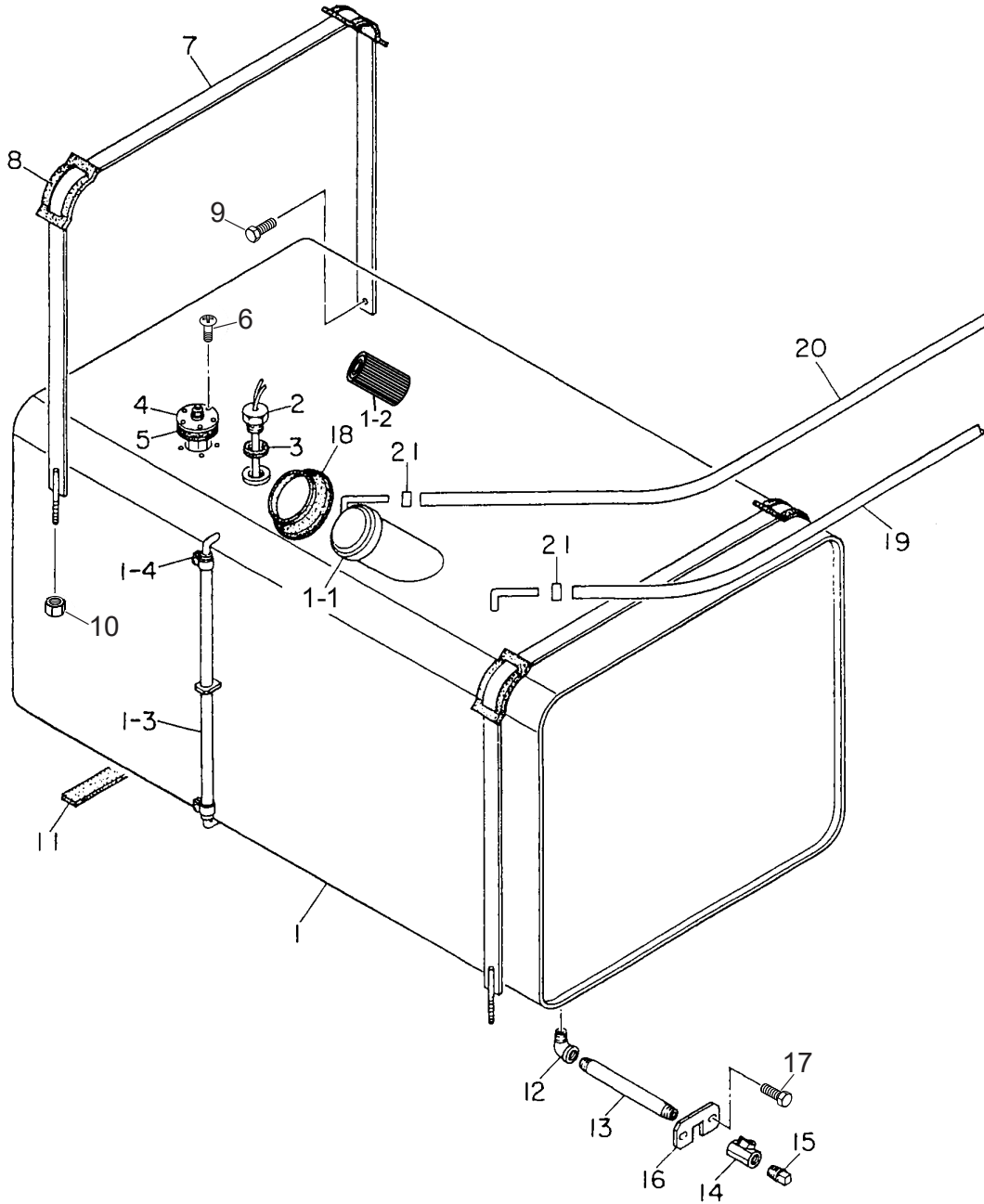
MUFFLER ASSY.



MUFFLER ASSY.

<u>NO.</u>	<u>PART NO.</u>	<u>PART NAME</u>	<u>QTY.</u>	<u>REMARKS</u>
1	C2331100002	MUFFLER	1	DCA300SSC
1	M5330100102	MUFFLER	1	DCA300SSCU
2	0019210025	HEX HEAD BOLT	4	
3	M5333000003	EXHAUST PIPE	1	
4	0602325066	BEND BOLT CLAMP	1	
5	C1334200304	GASKET	1	DCA300SSC
5	M4333200004	GASKET	1	DCA300SSCU
6	0010312055	HEX HEAD BOLT	4	
6A	0030312000	HEX NUT.....	4	DCA300SSC
6B	0042512000	WASHER, LOCK.....	4	DCA300SSC
6C	0041612000	WASHER, FLAT	8	DCA300SSC
7	C2331300004	COVER.....	2	DCA300SSC
7	M5331300004	COVER.....	2	DCA300SSCU
8	0017108020	HEX HEAD BOLT	4	

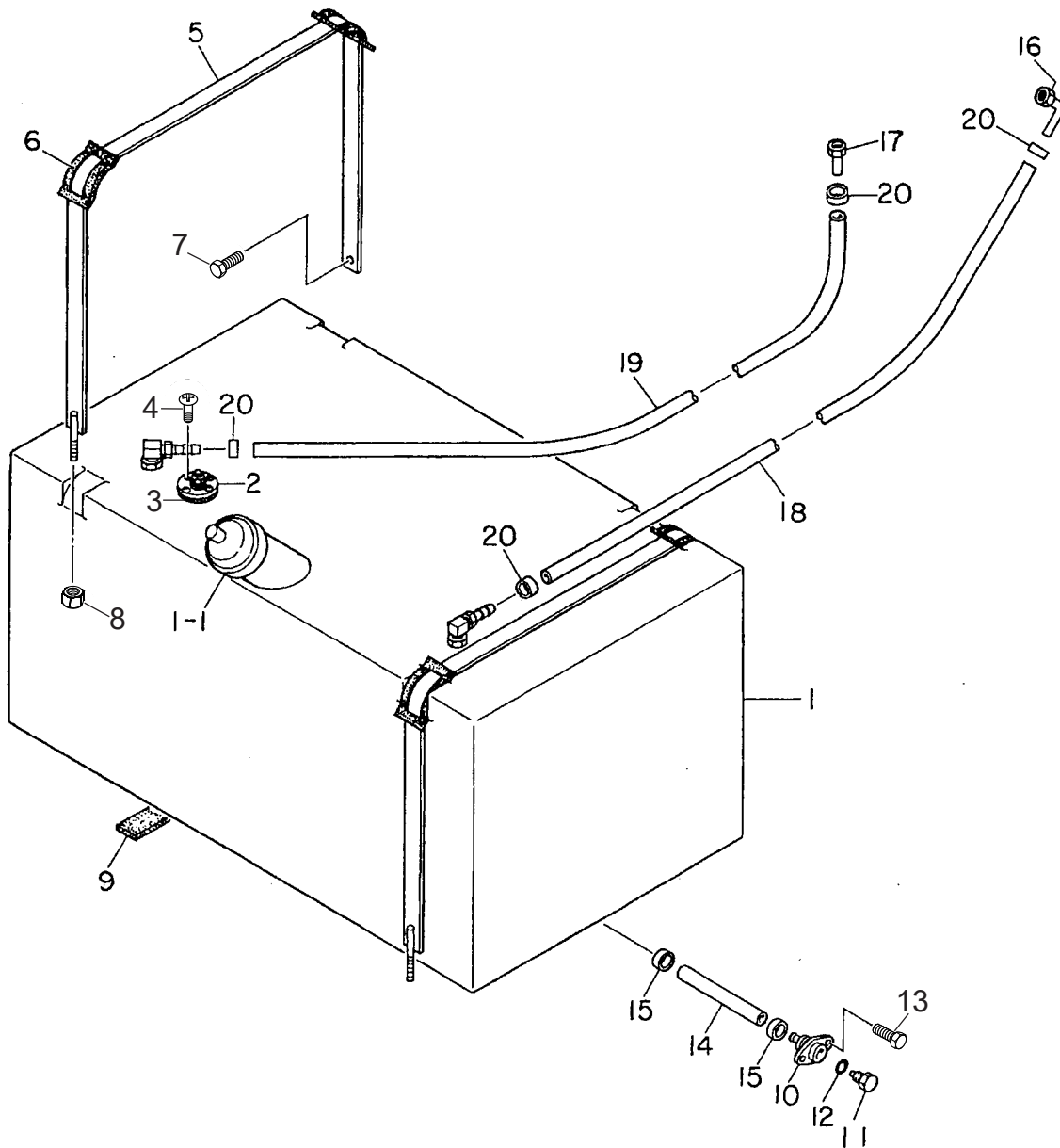
FUEL TANK ASSY. (DCA300SSC)



FUEL TANK ASSY. (DCA300SSC)

<u>NO.</u>	<u>PART NO.</u>	<u>PART NAME</u>	<u>QTY.</u>	<u>REMARKS</u>
1	C2363000303	FUEL TANK	1	
1-1	0810105004	CAP, FUEL TANK	1	
1-2	0810105400	FUEL FILTER	1	
1-3	0264100525	HOSE, FUEL GAUGE	1	
1-4	0605515079	HOSE BAND	2	
2	0605503023	FUEL SENSOR	1	
3	0802120604	PACKING	1	
4	0605501093	UNIT, FUEL	1	
5	0605516090	PACKING	1	
6	0022905015	MACHINE SCREW	5	
7	8195523104	TANK BAND	2	
8	0805003414	PAD, TANK BAND	4	
9	0017108020	HEX HEAD BOLT	4	
10	0207308000	SUPER LOCK NUT	2	
11	0222100300	TANK SHEET	6	
12	0130206000	STREET ELBOW, 1/2"	1	
13	0134306170	DRAIN PIPE	1	
14	0603325026	VALVE	1	
15	0132006000	PLUG, 1/2"	1	
16	C1367700304	LOCK PLATE	1	
17	0019208020	HEX HEAD BOLT	2	
18	0845039604	RUBBER SEAL	1	
19	0191503400	SUCTION HOSE	1	
20	0191503700	RETURN HOSE	1	
21	0605515073	HOSE BAND	4	

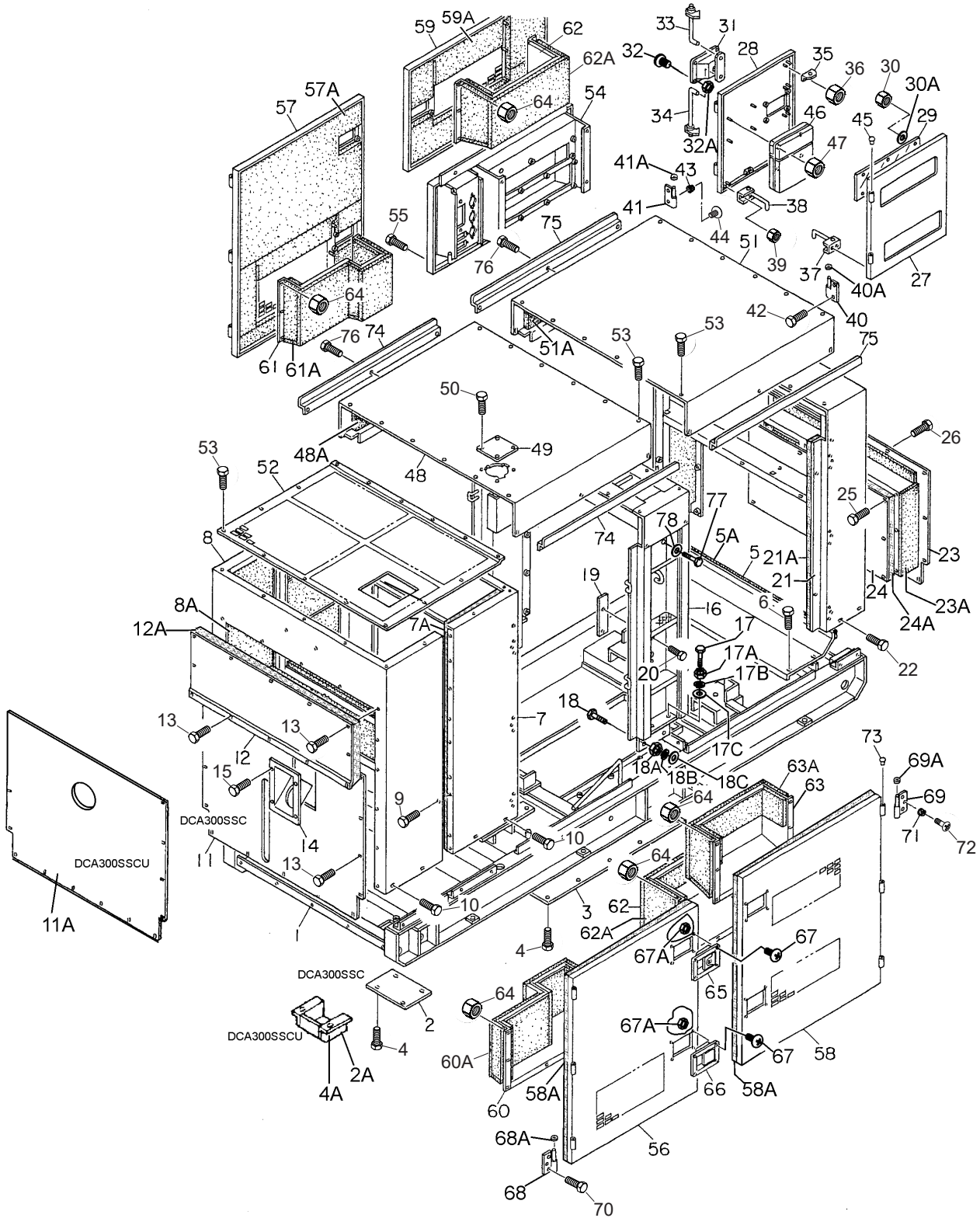
FUEL TANK ASSY. (DCA300SSCU)



FUEL TANK ASSY. (DCA300SSCU)

<u>NO.</u>	<u>PART NO.</u>	<u>PART NAME</u>	<u>QTY.</u>	<u>REMARKS</u>
1	M5363000202	FUEL TANK	1	
1-1	0605505070	CAP, FUEL TANK	1	
2	Y0605501066	FUEL SENDER UNIT	1	REPLACES P/N 0605501069
3	0605516090	GASKET	1	
4	0027104016	MACHINE SCREW	5	
5	M5364200004	TANK BAND	2	
6	M9310500104	SUPPORTER SHEET	4	
7	0016908020	HEX HEAD BOLT	2	
8	0207308000	SUPER LOCK NUT	2	
9	0222100300	RUBBER TANK SHEET	6	
10	M9200000003	DRAIN JOINT	1	
11	M9200200004	DRAIN BOLT	1	
12	0150000018	O-RING	1	
13	0016908020	HEX HEAD BOLT	2	
14	M1363400104	DRAIN HOSE	1	
15	0605515198	HOSE BAND	2	
16	0602042682	CONNECTION	1	
17	0602042683	CONNECTION	1	
18	0191503400	HOSE, SUCTION	1	
19	0191503700	HOSE, RETURN	1	
20	0605515198	HOSE BAND	4	

ENCLOSURE ASSY.



ENCLOSURE ASSY.

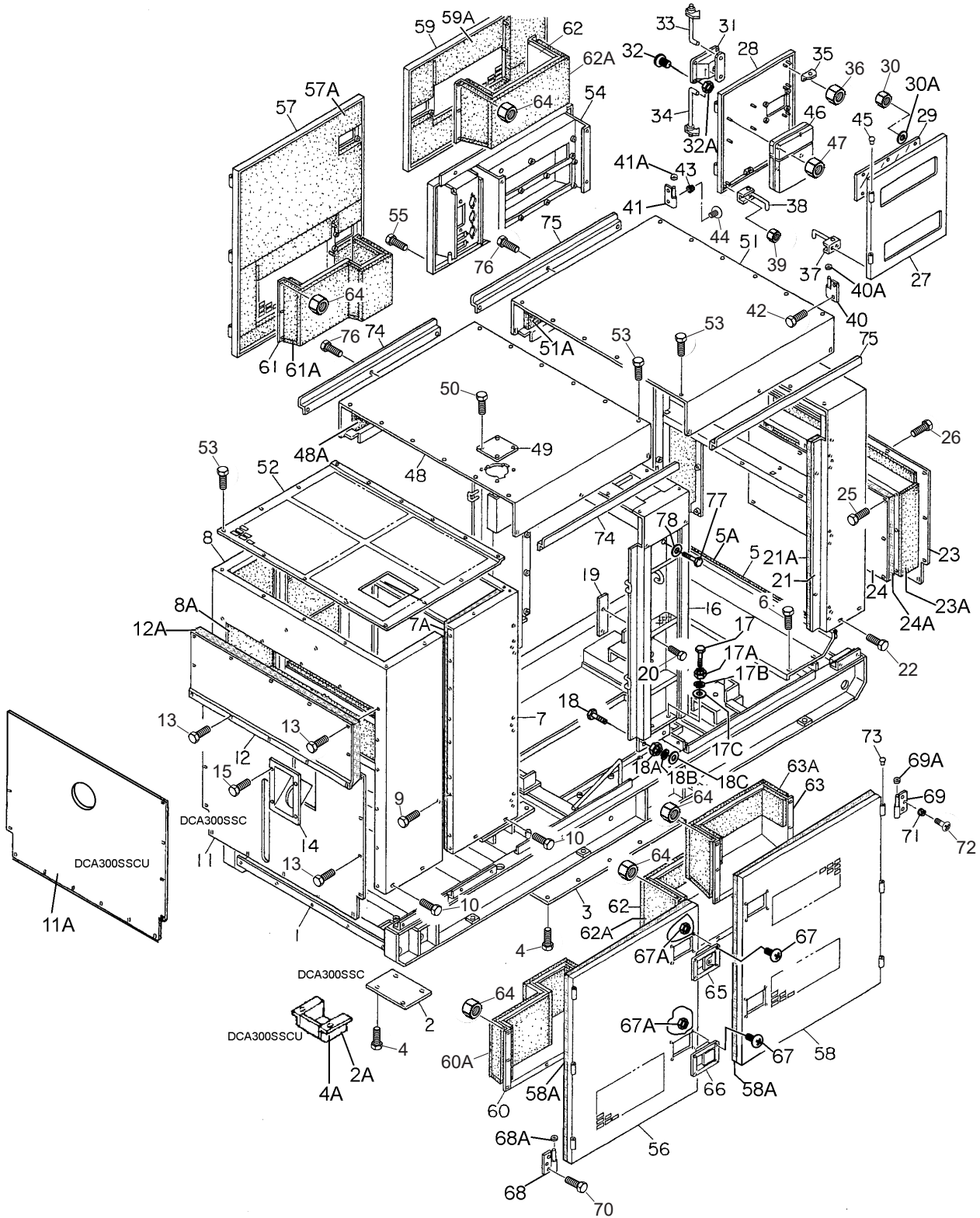
<u>NO.</u>	<u>PART NO.</u>	<u>PART NAME</u>	<u>QTY.</u>	<u>REMARKS</u>
1	C2413003202	BASE.....	1	DCA300SSC
1	M5413000004	BASE.....	1	DCA300SSCU
2	C3414100104	FLOOR PANEL.....	1	DCA300SSC
2A	M1413400004	FLOOR PANEL.....	1	DCA300SSCU
3	C2414100004	FLOOR PANEL.....	1	DCA300SSC
3	M5413100204	FLOOR PANEL.....	1	DCA300SSCU
4	0019208020	HEX HEAD BOLT.....	14	DCA300SSC
4A	0019208020	HEX HEAD BOLT.....	12	DCA300SSCU
5	C2414600304	DUCT.....	1	DCA300SSC
5	M5413600104	DUCT.....	1	DCA300SSCU
5A	C2494000304	ACOUSTIC SHEET.....	1	DCA300SSC
5A	M5493000004	ACOUSTIC SHEET.....	1	DCA300SSCU
6	0017108020	HEX HEAD BOLT.....	4	DCA300SSC
6	0016908020	HEX HEAD BOLT.....	4	DCA300SSCU
7	M5423000002	FRONT FRAME	1	
7A	M5493100003	ACOUSTIC SHEET	1	
8	M5423000102	FRONT FRAME	1	
8A	M5493100003	ACOUSTIC SHEET	1	
9	0017108020	HEX HEAD BOLT	10	
10	0019210025	HEX HEAD BOLT	8	
11	C2424200003	COVER, FRONT FRAME.....	1	DCA300SSC
11A	M5424200203	COVER, FRONT FRAME.....	1	DCA300SSCU
12	C2424201504	COVER, FRONT FRAME.....	1	DCA300SSC
12	M5424200103	COVER, FRONT FRAME.....	1	DCA300SSCU
12A	C2494101104	ACOUSTIC SHEET.....	1	DCA300SSC
12A	M5494101604	ACOUSTIC SHEET.....	1	DCA300SSCU
13	0019208020	HEX HEAD BOLT	23	
14	0845042703	FILLER BRACKET.....	1	DCA300SSC
15	0019208020	HEX HEAD BOLT.....	4	DCA300SSC
16	M5433000002	CENTER FRAME	1	
17	0010114050	HEX HEAD BOLT	4	
17A	0030014000	HEX NUT	4	
17B	0040014000	WASHER, LOCK	4	
17C	0041214000	WASHER, FLAT	8	

ADD THE FOLLOWING DIGITS AFTER THE PART NUMBER WHEN ORDERING ANY PAINTED PANEL TO INDICATE COLOR OF UNIT:

1-ORANGE	6-CATERPILLAR YELLOW
2-WHITE	7-CATO GOLD
3-SPECTRUM GREY	8-RED
4-SUNBELT GREEN	9-DESERT TAN
5-BLACK	

THE SERIAL NUMBER MAY BE REQUIRED.

ENCLOSURE ASSY. (CONT'D.)



ENCLOSURE ASSY. (CONT'D.)

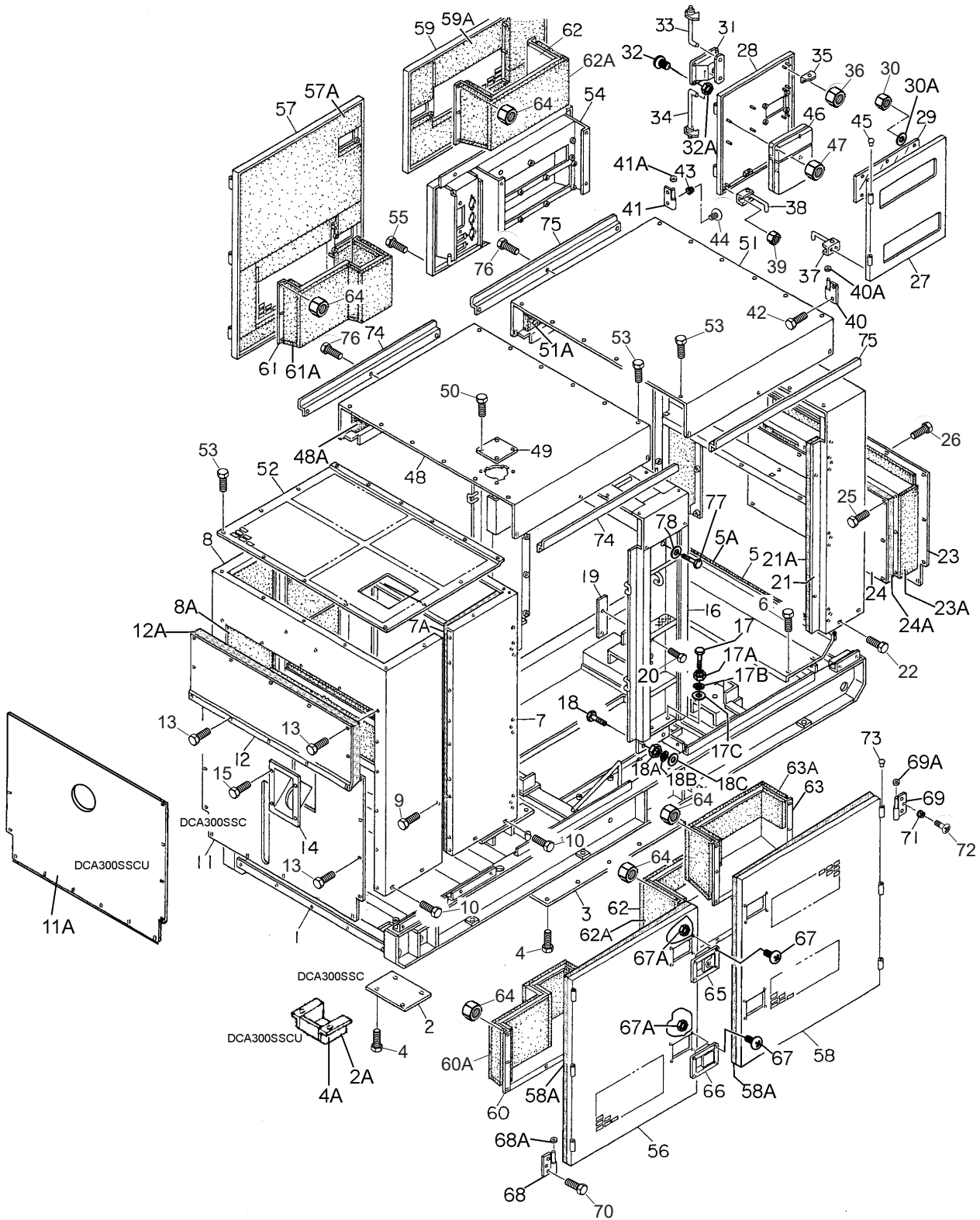
<u>NO.</u>	<u>PART NO.</u>	<u>PART NAME</u>	<u>QTY.</u>	<u>REMARKS</u>
18	0010114040	HEX HEAD BOLT	8	
18A	0030014000	HEX NUT	8	
18B	0040014000	WASHER, LOCK	8	
18C	0041214000	WASHER, FLAT	16	
19	C2367700404	COVER.....	1	DCA300SSC
19	M5366700204	COVER.....	1	DCA300SSCU
20	0019208020	HEX HEAD BOLT	2	
21	M5443000002	REAR FRAME	1	
21A	C2494300204	ACOUSTIC SHEET	1	DCA300SSC
21A	M5493300904	ACOUSTIC SHEET	1	DCA300SSCU
22	0019210025	HEX HEAD BOLT	4	
23	M5443300003	COVER, REAR FRAME	1	
23A	M5493300004	ACOUSTIC SHEET	1	
24	M5443300104	PANEL	1	
24A	M5493300104	ACOUSTIC SHEET	1	
25	0016908020	HEX HEAD BOLT	12	
26	0019208020	HEX HEAD BOLT	14	
27	M5453000003	DOOR, REAR FRAME	1	
28	M5453000103	DOOR, REAR FRAME	1	
29	8225147004	WINDOW PLATE	2	DCA300SSC
29	M5443600004	WINDOW PLATE	2	DCA300SSCU
30	0207306000	SELF- LOCKING U-NUT	12	
30A	0041206000	WASHER, FLAT	12	
31	B9114000102	DOOR HANDLE	1	DCA300SSC
31	M9113000202	DOOR HANDLE	1	DCA300SSCU
32	0021806016	MACHINE SCREW	4	
32A	0030006000	HEX NUT	4	
33	C3444700004	DOOR ROD	1	DCA300SSC
33	M9114300004	DOOR ROD.....	1	DCA300SSCU
34	8195146304	DOOR ROD.....	1	DCA300SSC
34	M9114300104	DOOR ROD.....	1	DCA300SSCU
35	0845050704	STAY.....	4	DCA300SSC
35	M9113300004	STAY.....	4	DCA300SSCU
36	0207006000	HEX NUT	8	

ADD THE FOLLOWING DIGITS AFTER THE PART NUMBER WHEN ORDERING ANY PAINTED PANEL TO INDICATE COLOR OF UNIT:

1-ORANGE	6-CATERPILLAR YELLOW
2-WHITE	7-CATO GOLD
3-SPECTRUM GREY	8-RED
4-SUNBELT GREEN	9-DESERT TAN
5-BLACK	

THE SERIAL NUMBER MAY BE REQUIRED.

ENCLOSURE ASSY. (CONT'D.)



ENCLOSURE ASSY. (CONT'D.)

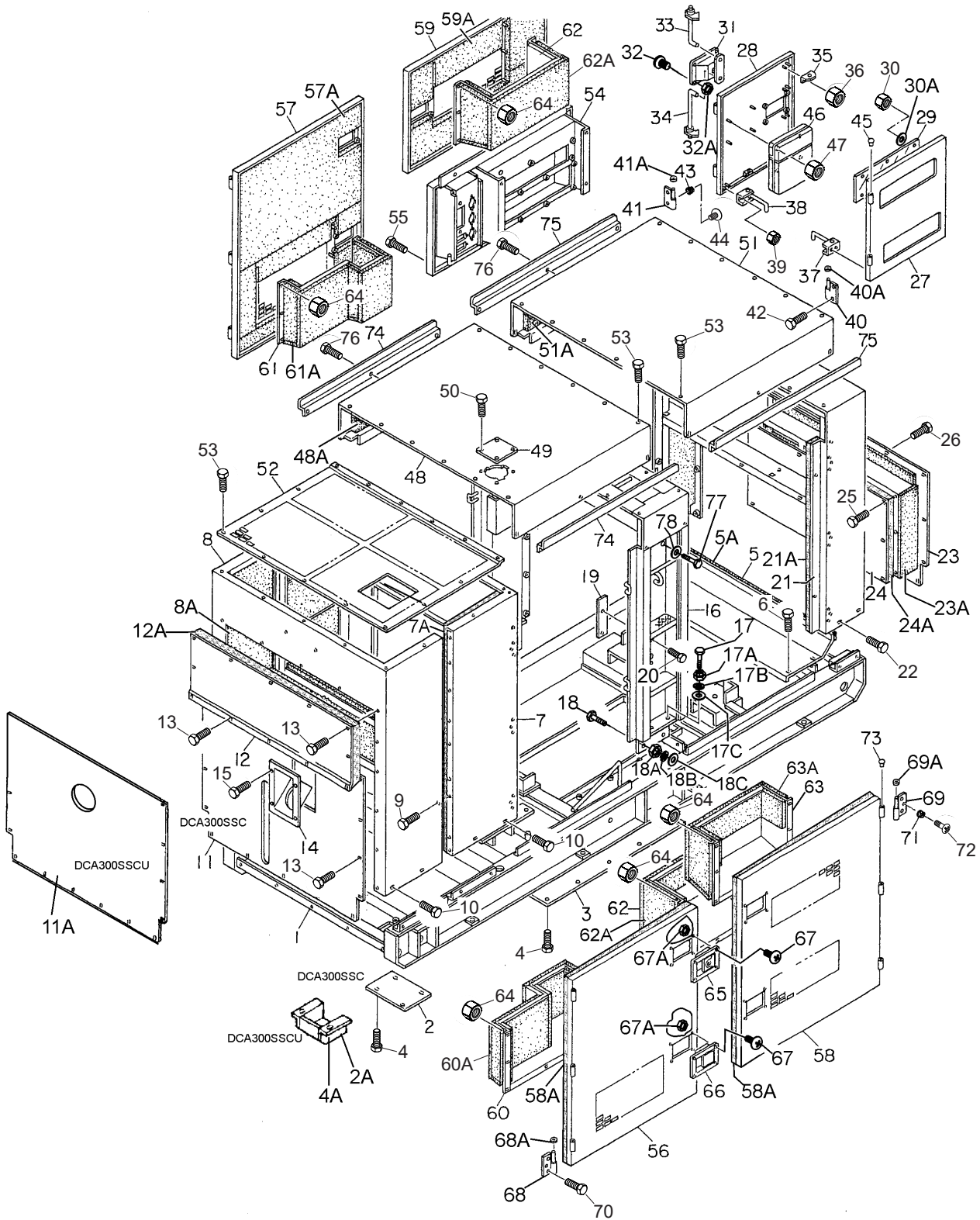
<u>NO.</u>	<u>PART NO.</u>	<u>PART NAME</u>	<u>QTY.</u>	<u>REMARKS</u>
37	0805011304	STOPPER, DOOR	1	DCA300SSC
37	M9113400104	STOPPER, DOOR	1	DCA300SSCU
38	0805011204	STOPPER, DOOR	1	DCA300SSC
38	M113400204	STOPPER, DOOR	1	DCA300SSCU
39	0207006000	HEX NUT	4	
40	M9110100204	HINGE	2	
40A	0845045004	WASHER.....	2	DCA300SSC
40A	M9116100004	WASHER.....	2	DCA300SSCU
41	M9110100304	HINGE	2	
41A	0845045004	WASHER.....	2	DCA300SSC
41A	M9116100004	WASHER.....	2	DCA300SSCU
42	0019208020	HEX HEAD BOLT	6	
43	0601850097	STOPPER	2	
44	0025408025	MACHINE SCREW	2	
45	0845031504	CAP	4	
45	M9310000004	CAP	4	
46	0600800320	MANUAL PAK	1	
47	0207006000	HEX NUT	4	
48	M5463100002	ROOF PANEL	1	
48A	M5493500004	ACOUSTIC SHEET	1	
49	M3310600004	COVER	1	
50	0019208020	HEX HEAD BOLT	4	
51	C2464200502	ROOF PANEL.....	1	DCA300SSC
51	M5463200102	ROOF PANEL.....	1	DCA300SSCU
51A	C2494500904	ACOUSTIC SHEET	1	DCA300SSC
51A	M5493502004	ACOUSTIC SHEET	1	DCA300SSCU
52	M5423200103	COVER, FRONT FRAME	1	
53	0019208020	HEX HEAD BOLT	41	
54	M5453200002	SPLASHER PANEL	1	
55	0019208065	HEX HEAD BOLT	6	
56	M5453000203	SIDE PANEL	1	
56A	M5493400004	ACOUSTIC SHEET	1	
57	M5453000303	SIDE PANEL	1	
57A	M5493400104	ACOUSTIC SHEET	1	
58	M5453000803	SIDE PANEL	1	
58A	M5493409304	ACOUSTIC SHEET	1	

ADD THE FOLLOWING DIGITS AFTER THE PART NUMBER WHEN ORDERING ANY PAINTED PANEL TO INDICATE COLOR OF UNIT:

1-ORANGE	6-CATERPILLAR YELLOW
2-WHITE	7-CATO GOLD
3-SPECTRUM GREY	8-RED
4-SUNBELT GREEN	9-DESERT TAN
5-BLACK	

THE SERIAL NUMBER MAY BE REQUIRED.

ENCLOSURE ASSY. (CONT'D.)



ENCLOSURE ASSY. (CONT'D.)

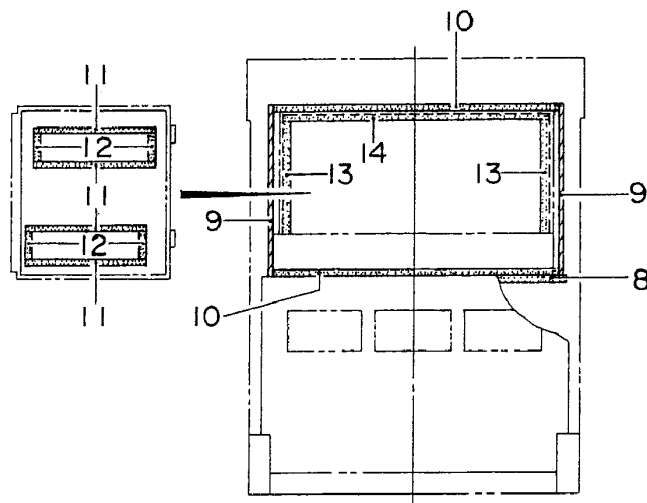
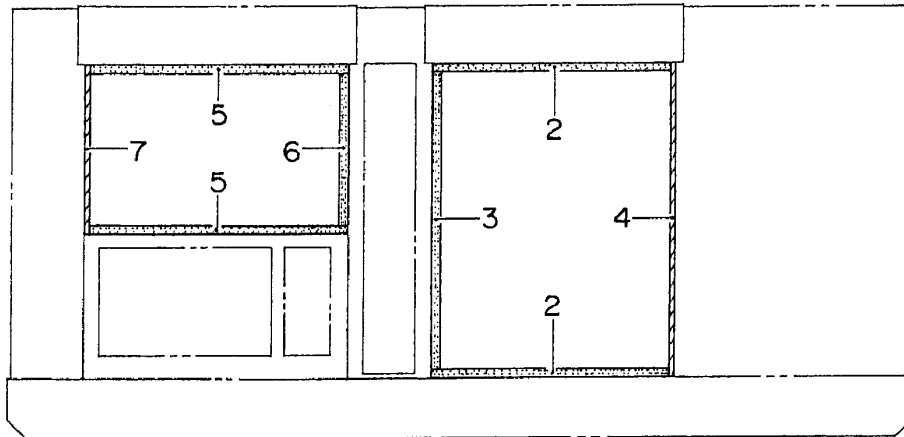
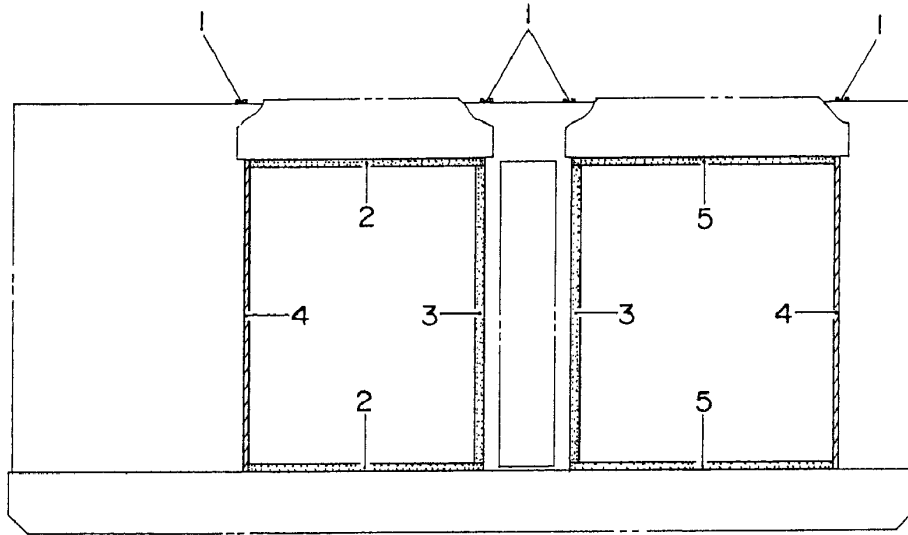
<u>NO.</u>	<u>PART NO.</u>	<u>PART NAME</u>	<u>QTY.</u>	<u>REMARKS</u>
59	M5453000903	SIDE PANEL	1	
59A	M5493409404	ACOUSTIC SHEET	1	
60	M5453300004	DUCT	1	
60A	M5493400204	ACOUSTIC SHEET	1	
61	M5453300104	DUCT	1	
61A	M5493400304	ACOUSTIC SHEET	1	
62	M5453300904	DUCT	2	
62A	M5493409504	ACOUSTIC SHEET	2	
63	M5453300204	DUCT	1	
63A	M5493400404	ACOUSTIC SHEET	1	
64	0207008000	HEX NUT	35	
65	B9114000002	DOOR HANDLE	4	DCA300SSC
65	M9113000002	DOOR HANDLE	4	DCA300SSCU
66	0825007362	DOOR HANDLE	3	DCA300SSC
66	M9113000102	DOOR HANDLE	3	DCA300SSCU
67	0021806016	MACHINE SCREW	28	
67A	0030006000	HEX NUT	16	
68	0845046904	HINGE	5	DCA300SSC
68	M9110100804	HINGE	5	DCA300SSCU
68A	0845045004	WASHER.....	5	DCA300SSC
68A	M9116100004	WASHER.....	5	DCA300SSCU
69	084504700	HINGE	6	DCA300SSC
69	M9110100904	HINGE	6	DCA300SSCU
69A	0845045004	WASHER.....	6	DCA300SSC
69A	M9116100004	WASHER.....	6	DCA300SSCU
70	0019208020	HEX HEAD BOLT	25	
71	0601850097	STOPPER	8	
72	0025408025	MACHINE SCREW	8	
73	0845031504	CAP	11	DCA300SSC
73	M9310000004	CAP	11	DCA300SSCU
74	M5463500004	GUTTER	2	
75	C2464500304	GUTTER.....	2	DCA300SSC
75	M5463500104	GUTTER.....	2	DCA300SSCU
76	0019208020	HEX HEAD BOLT	4	
77	0019116025	HEX HEAD BOLT	1	DCA300SSCU
78	0042416000	WASHER, FLAT	1	DCA300SSCU

ADD THE FOLLOWING DIGITS AFTER THE PART NUMBER WHEN ORDERING ANY PAINTED PANEL TO INDICATE COLOR OF UNIT:

1-ORANGE	6-CATERPILLAR YELLOW
2-WHITE	7-CATO GOLD
3-SPECTRUM GREY	8-RED
4-SUNBELT GREEN	9-DESERT TAN
5-BLACK	

THE SERIAL NUMBER MAY BE REQUIRED.

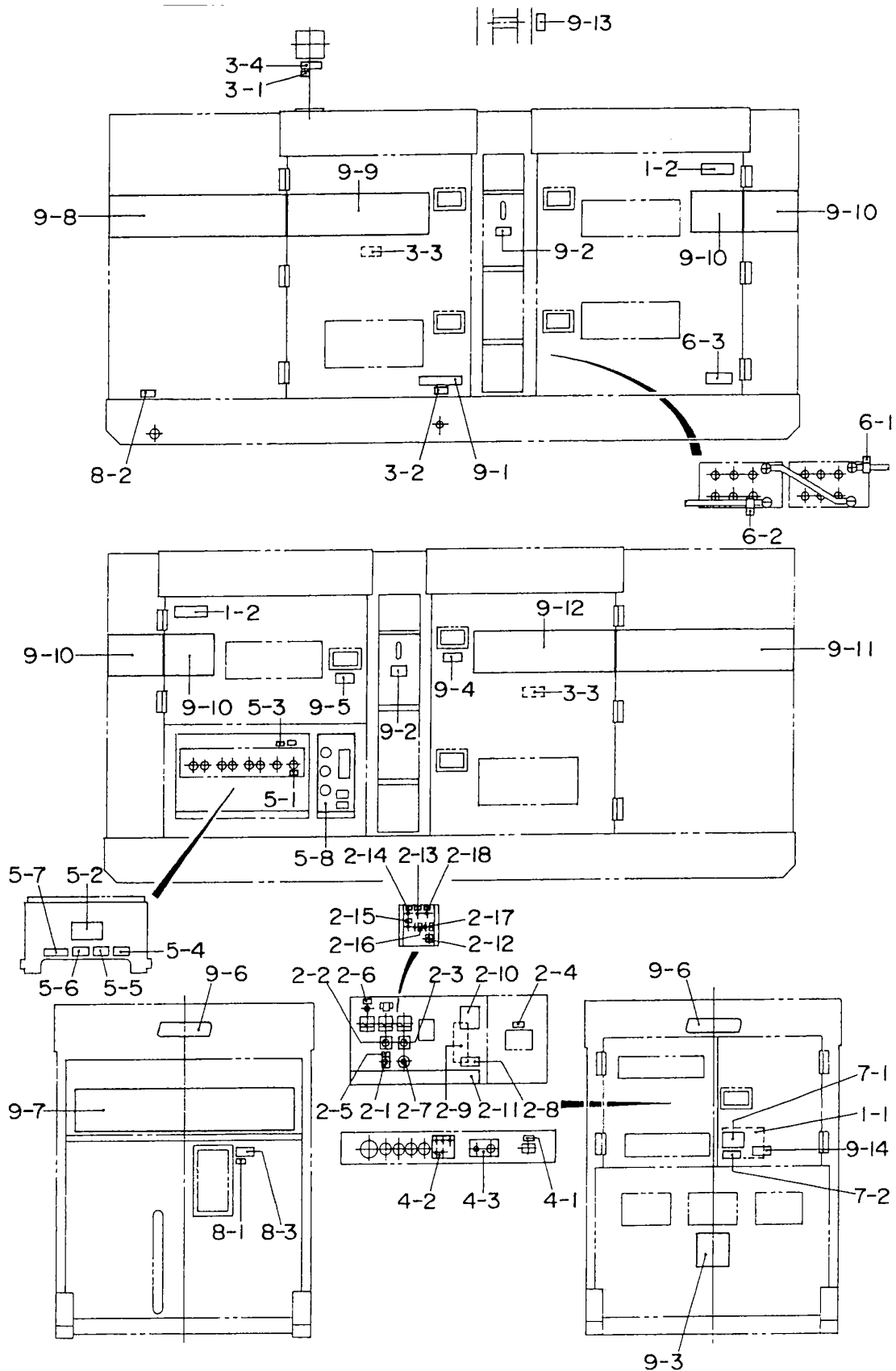
RUBBER SEALS ASSY.



RUBBER SEALS ASSY.

<u>NO.</u>	<u>PART NO.</u>	<u>PART NAME</u>	<u>QTY.</u>	<u>REMARKS</u>
1	0229201400	SEAL, RUBBER	4	
2	0228901015	SEAL, RUBBER	4	
3	0228901250	SEAL, RUBBER	3	
4	0228901310	SEAL, RUBBER	3	
5	0228900650	SEAL, RUBBER.....	4DCA300SSC
5	0228900650	SEAL, RUBBER.....	4DCA300SSCU
6	0228900650	SEAL, RUBBER	1	
7	0228900710	SEAL, RUBBER	1	
8	0229201300	SEAL, RUBBER	1	
9	0221200705	SEAL, RUBBER	2	
10	0228801210	SEAL, RUBBER	2	
11	0228100510	SEAL, RUBBER	4	
12	0228100120	SEAL, RUBBER	4	
13	0229200470	SEAL, RUBBER	2	
14	0229201130	SEAL, RUBBER	1	

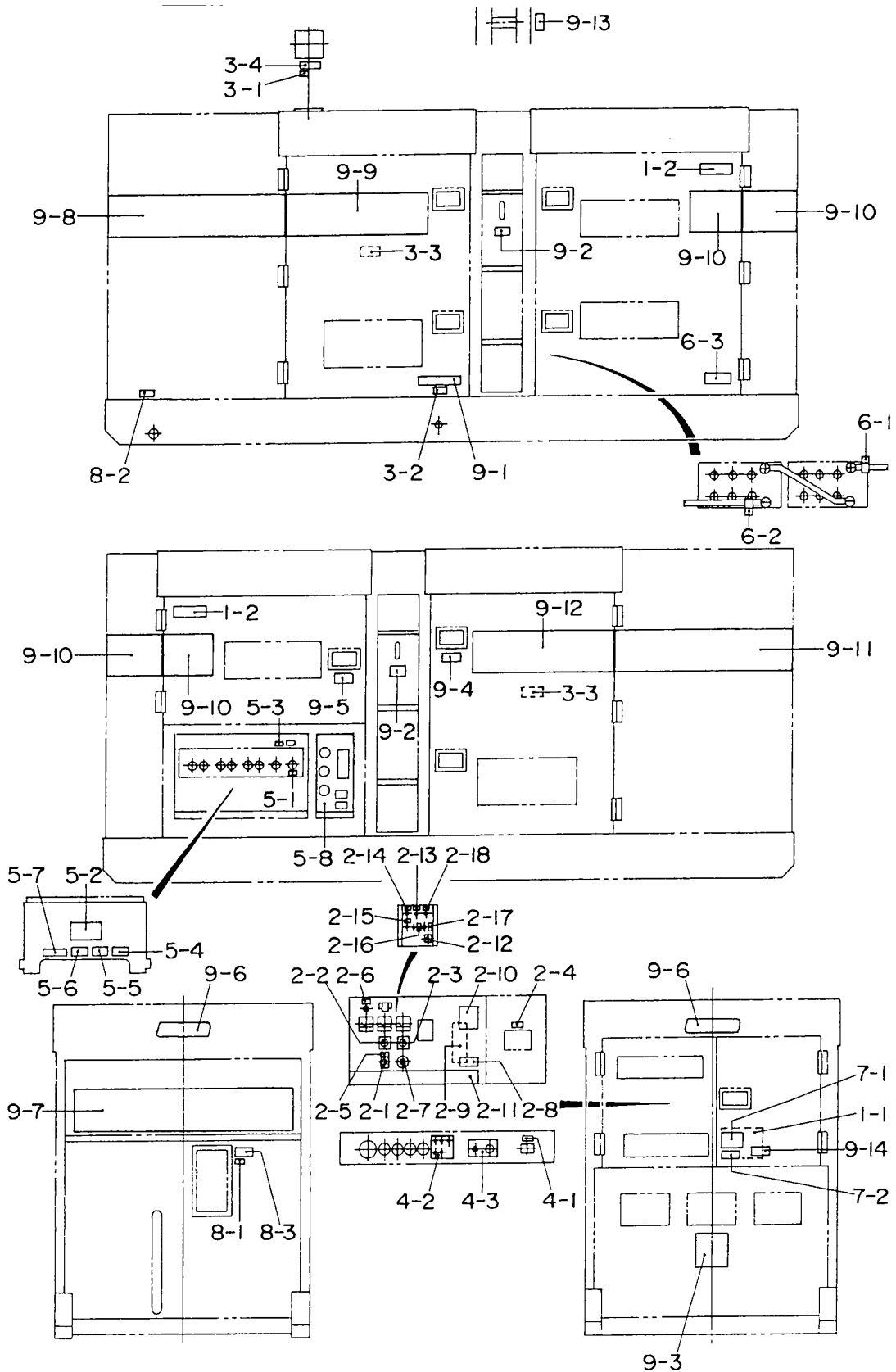
NAMEPLATE AND DECALS ASSY. DCA300SSC



NAMEPLATE AND DECALS ASSY. DCA300SSC

<u>NO.</u>	<u>PART NO.</u>	<u>PART NAME</u>	<u>QTY.</u>	<u>REMARKS</u>
1-1	C3550000703	DECAL : HANDLING PROCEDURES	1	C35000070
1-2	C9522100003	DECAL : CAUTION	2	C92210000
CONTROL BOX GROUP				
2-1	0800520100	PLATE : ON - OFF	1	AT-202
2-2	0800520904	PLATE : AMMETER CHANGE- OVER SWITCH	1	N-2438
2-3	0800520814	PLATE : VOLTMETER CHANGE- OVER SWITCH	1	N-2439
2-4	0840624504	DECAL : CIRCUIT BREAKER.....	1	S-3031
2-5	0840624604	DECAL : PANEL LIGHT SWITCH	1	S-3032
2-6	0840624704	DECAL : PILOT LAMP	1	S-3033
2-7	0840624804	DECAL : VOLTAGE REGULATOR.....	1	S-3034
2-8	B9531100604	DECAL : WARNING ELECTRIC SHOCK HAZARD.....	1	B93110060
2-9	C0551000903	DECAL : SETTING FOR OUTPUT VOLTAGE	1	C05100090
2-10	C2551000004	DECAL : SAFETY INSTRUCTIONS	1	C25100000
2-11	M5560100903	DECAL : WHISPERWATT 300.....	1	M56010090A
2-12	C9502400004	DECAL : HIGH IDLE SPEED	1	C90240000
2-13	C9520027704	DECAL : DIAGNOSTIC BUTTON	1	C92002770
2-14	C9520028604	DECAL : WARNING DIAGNOSTIC LAMP	1	C92002860
2-15	C9520028704	DECAL : SHUTDOWN DIAGNOSTIC LAMP.....	1	C92002870
2-16	C9520028804	DECAL : LOW IDLE SPEED / DIAG. CODE SW.	1	C92002880
2-17	C9521007504	DECAL : DIAGNOSTIC SWITCH.....	1	C92100750
2-18	Z0110001504	DECAL : RESET	1	Z01000150
ENGINE AND RADIATOR GROUP				
3-1	6360610304	DECAL : WATER.....	1	S-1880
3-2	6360620204	DECAL : OIL DRAIN PLUG.....	1	S-1885
3-3	B9504000404	DECAL : MOVING PARTS	2	B90400040
3-4	B9504100104	DECAL : WARNING HOT COOLANT	1	B90410010
ENGINE OPERATING PANEL GROUP				
4-1	C0551000504	DECAL : BATTERY SWITCH.....	1	C05100050
4-2	C3550000404	DECAL : ALARM LAMP	1	C35000040
4-3	M5550000503	DECAL : OPERATING PANEL.....	1	M55000050
OUTPUT TERMINAL GROUP				
5-1	0840614104	DECAL : GROUND	1	S-2635
5-2	0840619904	DECAL : DANGER HIGH VOLTAGE	1	S-2731
5-3	9039209064	DECAL : START CONTACT	1	S-4468
5-4	B9511100304	DECAL : WARNING	1	B91110030
5-5	B9511100404	DECAL : WARNING ELECTRIC SHOCK HAZARD.....	1	B91110040
5-6	B9531100504	DECAL : WARNING ELECTRIC SHOCK HAZARD.....	1	B93110050
5-7	C0551000404	DECAL : 3- PHASE OUTPUT TERMINAL	1	C05100040
5-8	C1551000803	DECAL : RECEPTACLE & CIRCUIT BREAKER	1	C15100080

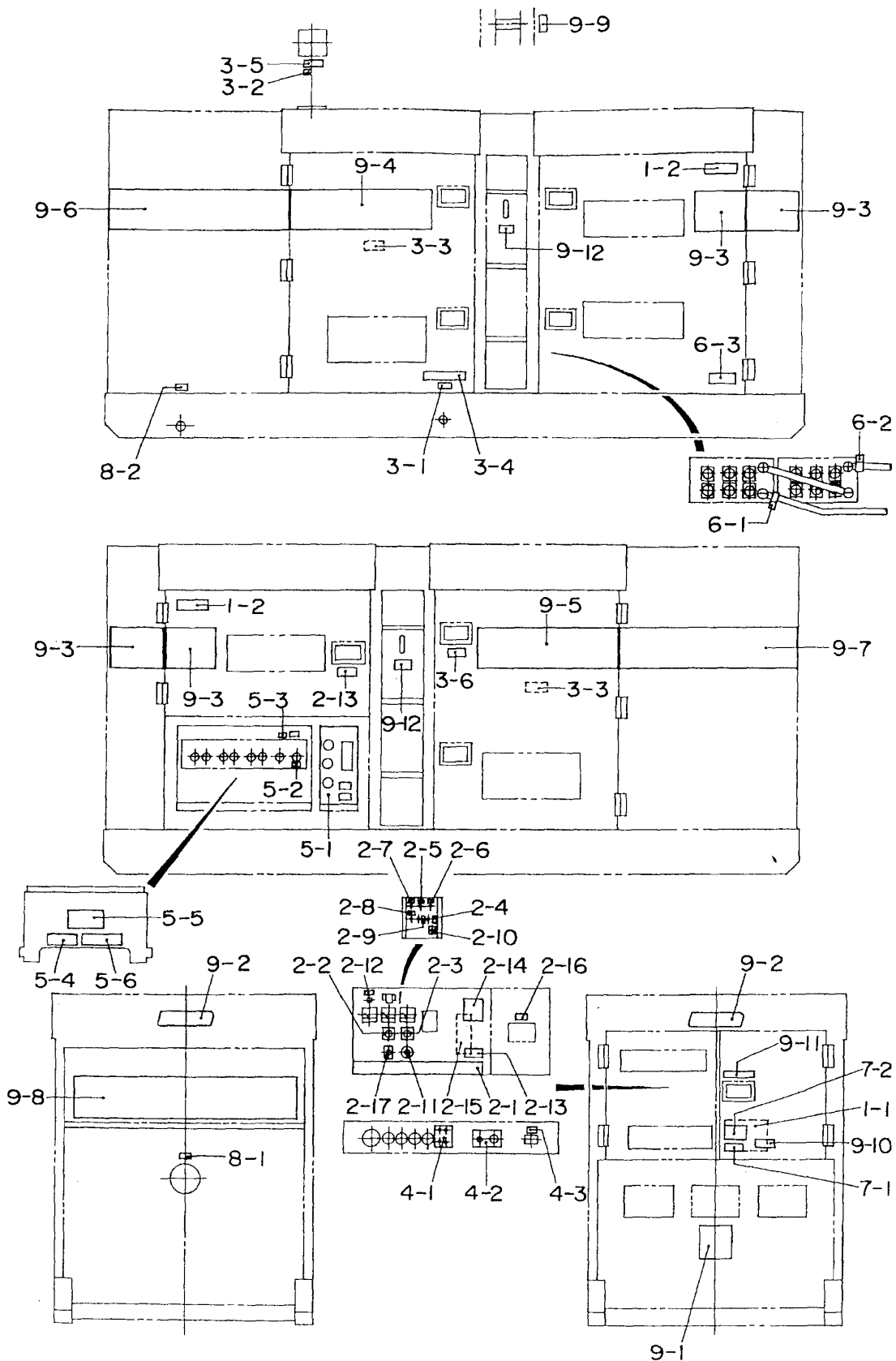
NAMEPLATE AND DECALS ASSY. DCA300SSC (CONT'D.)



NAMEPLATE AND DECALS ASSY. DCA300SSC (CONT'D.)

<u>NO.</u>	<u>PART NO.</u>	<u>PART NAME</u>	<u>QTY.</u>	<u>REMARKS</u>
BATTERY GROUP				
6-1	0800689404	DECAL : +	1.....	S-2090
6-2	0800689504	DECAL : -	1.....	S-2091
6-3	C9505300004	DECAL : CAUTION	1.....	C90530000
MUFFLER GROUP				
7-1	A9504000014	DECAL : DANGER.....		A90400001
7-2	B9504200004	DECAL : WARNING ENGINE EXHAUST	1.....	B90420000
FUEL TANK GROUP				
8-1	1320620904	DECAL : DIESEL FUEL.....	1.....	S-1756
8-2	6360620004	DECAL : FUEL DRAIN PLUG	1.....	S-1883
8-3	B9504500004	DECAL : WARNING DIESEL FUEL	1.....	B90450000
ENCLOSURE GROUP				
9-1	1320610603	DECAL : WATER - OIL.....	1.....	S-1760
9-2	1320621504	DECAL : SUPPORT HOOK	2.....	S-2257
9-3	0840625902	DECAL : MQ	1.....	S-3057
9-4	B9504000304	DECAL : CAUTION HOT PARTS.....	1.....	B90400030
9-5	B9531100604	DECAL : WARNING ELECTRIC SHOCK HAZ.	1.....	B93110060
9-6	0600500090	EMBLEM	2	
9-6A	0021106016	MACHINE SCREW	4	
9-7	M5560101503	STRIPE	1	
9-8	M5560101303	STRIPE	1	
9-9	M5560101103	STRIPE	1	
9-10	M5560101004	STRIPE	4	
9-11	M5560101403	STRIPE	1	
9-12	M5560101203	STRIPE	1	
9-13	C9504000304	DECAL : CAUTION	1.....	C90400030
9-14	M9504200004	DECAL : WARNING START FIRES	1.....	M90420000

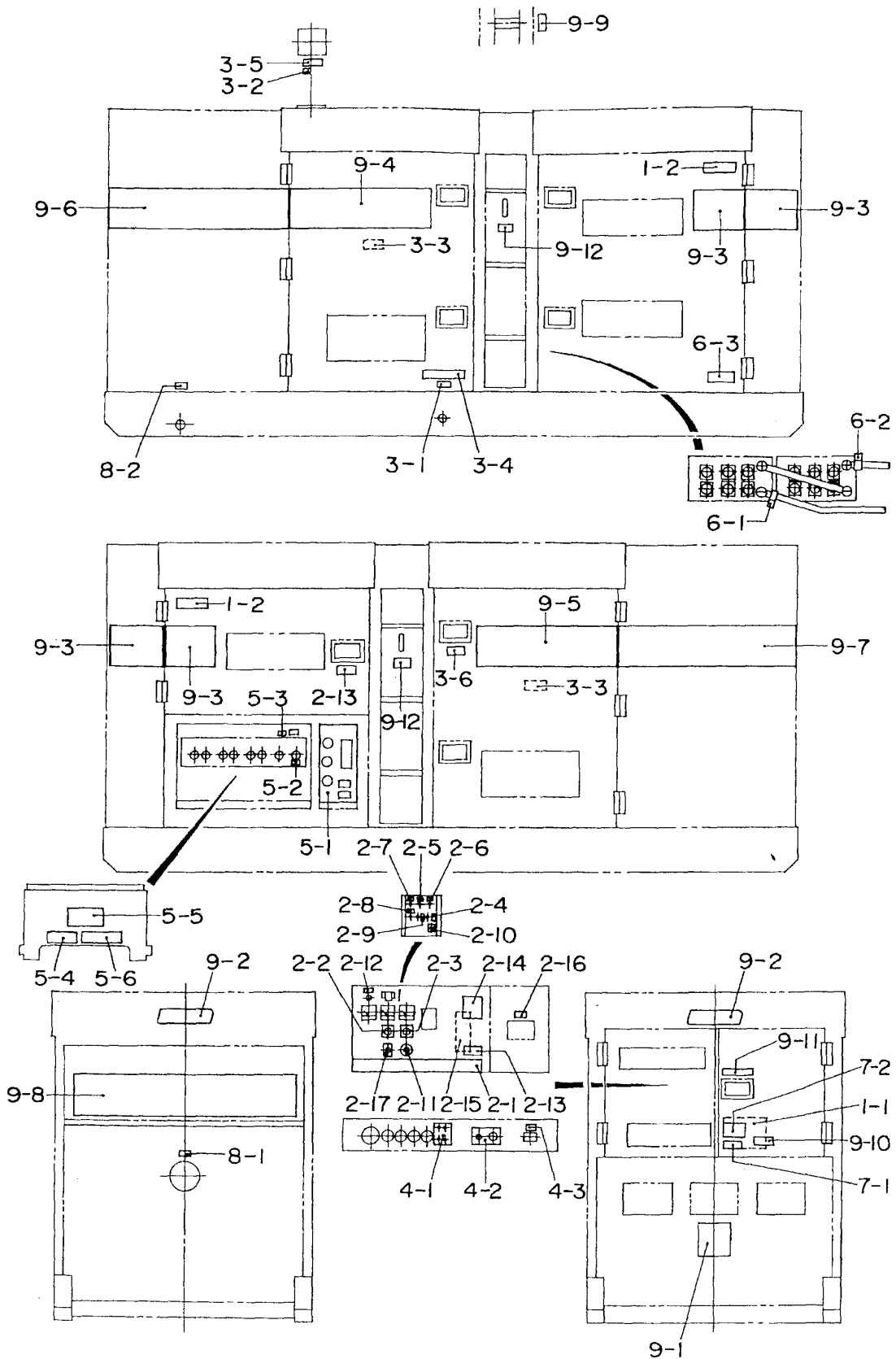
NAMEPLATE AND DECALS ASSY. DCA300SSCU



NAMEPLATE AND DECALS ASSY. DCA300SSCU

<u>NO.</u>	<u>PART NO.</u>	<u>PART NAME</u>	<u>QTY.</u>	<u>REMARKS</u>
1-1	M5550000303	DECAL : HANDLING PROCEDURES	1	M55000030
1-2	M9520100603	DECAL : CAUTION	2	M92010060
CONTROL BOX GROUP				
2-1	M5560100903	DECAL : WHISPERWATT 300.....	1	M56010090A
2-2	M9520000104	PLATE : AMMETER CHANGE-OVER SWITCH	1	M92000010
2-3	M9520000204	PLATE : VOLTMETER CHANGE-OVER SWITCH	1	M92000020
2-4	M9520000904	DECAL : DIAGNOSTIC SWITCH.....	1	M92000090
2-5	M9520001104	DECAL : DIAGNOSTIC BUTTON	1	M92000110
2-6	M9520001504	DECAL : RESET	1	M92000150
2-7	M9520001804	DECAL : WARNING DIAGNOSTIC LAMP	1	M92000180
2-8	M9520001904	DECAL : SHUTDOWN DIAGNOSTIC LAMP.....	1	M92000190
2-9	M9520001904	DECAL : LOW IDLE SPEED/DIAG. CODE SWITCH... 1	1	M92000200
2-10	M9522000404	DECAL : HIGH IDLE SPEED	1	M92200040
2-11	M9520001304	DECAL : VOLTAGE REGULATOR.....	1	M92000130
2-12	M9520001404	DECAL : PILOT LAMP	1	M92000140
2-13	M9520100004	DECAL : WARNING ELECTRIC SHOCK HAZ.	1	M92010000
2-14	M9520100304	DECAL : GENERAL CAUTION	1	M92010030
2-15	M9520200303	DECAL : SETTING FOR OUTPUT VOLTAGE	1	M92020030
2-16	M9522000504	DECAL : CIRCUIT BREAKER.....	1	M92200050
2-17	M9522000704	DECAL : PANEL LIGHT SWITCH	1	M92200070
ENGINE AND RADIATOR GROUP				
3-2	M9500000004	DECAL : OIL DRAIN PLUG.....	1	M90000000
3-1	M9500100004	DECAL : WATER.....	1	M90010000
3-3	M9503000004	DECAL : MOVING PARTS	2	M90300000
3-4	M9510100004	DECAL : WATER OIL	1	M91010000
3-5	M9503100004	DECAL : WARNING RADIATOR CAP	1	M90310000
3-6	M9510100004	DECAL : HIGH TEMP	1	M91010000
ENGINE OPERATING PANEL GROUP				
4-1	M5550000103	DECAL : ALARM LAMP	1	M55000010
4-3	M5550000503	DECAL : OPERATING PANEL.....	1	M55000050
4-1	M9520001604	DECAL : BATTERY SWITCH.....	1	M92000160
OUTPUT TERMINAL GROUP				
5-1	M4550000103	DECAL : AUXILIARY OUTPUTS.....	1	M45000010
5-2	M9520000004	DECAL : GROUNDING	1	M92000000
5-3	M9520000504	DECAL : START CONTACT	1	M92000050
5-4	M9520000704	DECAL : 3-PHASE OUTPUT TERMINAL	1	M92000070
5-5	M9520100404	DECAL : DANGER HIGH VOLTAGE	1	M92010040
5-6	M9520100503	DECAL : WARNING ELECTRIC SHOCK HAZARD.... 1	1	M92010050

NAMEPLATE AND DECALS ASSY. DCA300SSCU (CONT'D.)



NAMEPLATE AND DECALS ASSY. DCA300SSCU (CONT'D.)

NO.	PART NO.	PART NAME	QTY.	REMARKS
BATTERY GROUP				
6-1	M9500300004	DECAL : -	1.....	M90030000
6-2	M9500300104	DECAL : +	1.....	M90030010
6-3	M9510100403	DECAL : WARNING BATTERY CONNECT	1.....	M91010040A
MUFFLER GROUP				
7-1	M9503200004	DECAL : WARNING ENGINE EXHAUST		M90320000
7-2	M9503200104	DECAL : DANGER EXHAUST GAS INDOOR	1.....	M90320010
FUEL TANK GROUP				
8-1	M9500500004	DECAL : DIESEL FUEL.....	1.....	M95005000
8-2	M9500500104	DECAL : FUEL DRAIN PLUG	1.....	M950050010
ENCLOSURE GROUP				
9-1	M9510200002	DECAL : MQ	1.....	M91020000
9-2	0600500090	EMBLEM	2	
9-2A	0021106016	MACHINE SCREW	4	
9-3	M5560101004	STRIPE	1	
9-4	M5560101103	STRIPE	1	
9-5	M5560101203	STRIPE	1	
9-6	M5560101303	STRIPE	4	
9-7	M5560101403	STRIPE	1	
9-8	M5561100403	STRIPE	1	
9-9	M5550000004	DECAL : CAUTION LIFTING CAP.....	1.....	M55000000
9-10	M9504200004	DECAL : WARNING START FIRES	1.....	M90420000
9-11	M9510000104	DECAL : DOCUMENT BOX LOCATED	1.....	M91000010
9-12	M9512000004	DECAL : SUPPORT HOOK	2.....	M91200000

PARTS MANUAL

HERE'S HOW TO GET HELP

PLEASE HAVE THE MODEL AND SERIAL
NUMBER ON HAND WHEN CALLING

UNITED STATES

Multiquip Inc.

(310) 537- 3700
6141 Katella Avenue Suite 200
Cypress, CA 90630
E-MAIL: mq@multiquip.com
WEBSITE: www.multiquip.com

CANADA

Multiquip

(450) 625-2244
4110 Industriel Boul.
Laval, Quebec, Canada H7L 6V3
E-MAIL: infocanada@multiquip.com

UNITED KINGDOM

Multiquip (UK) Limited Head Office

0161 339 2223
Unit 2, Northpoint Industrial Estate, Globe Lane,
Dukinfield, Cheshire SK16 4UJ
E-MAIL: sales@multiquip.co.uk

© COPYRIGHT 2024, MULTIQUIP INC.

Multiquip Inc, the MQ logo and the MQ Power logo are registered trademarks of Multiquip Inc. and may not be used, reproduced, or altered without written permission. All other trademarks are the property of their respective owners and used with permission.

This manual MUST accompany the equipment at all times. This manual is considered a permanent part of the equipment and should remain with the unit if resold.

The information and specifications included in this publication were in effect at the time of approval for printing. Illustrations, descriptions, references and technical data contained in this manual are for guidance only and may not be considered as binding. Multiquip Inc. reserves the right to discontinue or change specifications, design or the information published in this publication at any time without notice and without incurring any obligations.

Manufactured for
MQ Power Inc.
by
DENYO MANUFACTURING CORP.

