

PARTS MANUAL



ULTRA-SILENT™ SERIES MODEL DCA45USI (ISUZU BB-4JG1T DIESEL ENGINE)

Revision #4 (03/13/24)

To find the latest revision of this publication or associated operation manual, visit our website at: www.mqpower.com



THIS MANUAL MUST ACCOMPANY THE EQUIPMENT AT ALL TIMES.

TABLE OF CONTENTS

DCA45USI

60 Hz GENERATOR

Explanation Of Code In Remarks Column..... 4
Suggested Spare Parts 5

Component Drawings

Generator Assembly 6-7
Control Box Assembly8-11
Engine and Radiator Assembly 12-15
Output Terminal Assembly..... 16-17
Battery Assembly 18-19
Muffler Assembly 20-21
Fuel Tank Assembly..... 22-23
Enclosure Assembly 24-29
Rubber Seals Assembly 30-31
Nameplate and Decals..... 32-33

NOTICE
Specifications and part numbers are subject to change without notice.

EXPLANATION OF CODE IN REMARKS COLUMN

The following section explains the different symbols and remarks used in the Parts section of this manual. Use the help numbers found on the back page of the manual if there are any questions.

NOTICE

The contents and part numbers listed in the parts section are subject to change without notice. Multiquip does not guarantee the availability of the parts listed.

SAMPLE PARTS LIST

NO.	PART NO.	PART NAME	QTY.	REMARKS
1	12345	BOLT	1	INCLUDES ITEMS W/%
2%		WASHER, 1/4 IN.		NOT SOLD SEPARATELY
2%	12347	WASHER, 3/8 IN. ...	1	MQ-45T ONLY
3	12348	HOSE	A/R	MAKE LOCALLY
4	12349	BEARING	1	S/N 2345B AND ABOVE

NO. Column

Unique Symbols — All items with same unique symbol (@, #, +, %, or >) in the number column belong to the same assembly or kit, which is indicated by a note in the “Remarks” column.

Duplicate Item Numbers — Duplicate numbers indicate multiple part numbers, which are in effect for the same general item, such as different size saw blade guards in use or a part that has been updated on newer versions of the same machine.

NOTICE

When ordering a part that has more than one item number listed, check the remarks column for help in determining the proper part to order.

PART NO. Column

Numbers Used — Part numbers can be indicated by a number, a blank entry, or TBD.

TBD (To Be Determined) is generally used to show a part that has not been assigned a formal part number at the time of publication.

A blank entry generally indicates that the item is not sold separately or is not sold by Multiquip. Other entries will be clarified in the “Remarks” Column.

QTY. Column

Numbers Used — Item quantity can be indicated by a number, a blank entry, or A/R.

A/R (As Required) is generally used for hoses or other parts that are sold in bulk and cut to length.

A blank entry generally indicates that the item is not sold separately. Other entries will be clarified in the “Remarks” Column.

REMARKS Column

Some of the most common notes found in the “Remarks” Column are listed below. Other additional notes needed to describe the item can also be shown.

Assembly/Kit — All items on the parts list with the same unique symbol will be included when this item is purchased.

Indicated by:

“INCLUDES ITEMS W/(unique symbol)”

Serial Number Break — Used to list an effective serial number range where a particular part is used.

Indicated by:

“S/N XXXXX AND BELOW”

“S/N XXXX AND ABOVE”

“S/N XXXX TO S/N XXX”

Specific Model Number Use — Indicates that the part is used only with the specific model number or model number variant listed. It can also be used to show a part is NOT used on a specific model or model number variant.

Indicated by:

“XXXXX ONLY”

“NOT USED ON XXXX”

“Make/Obtain Locally” — Indicates that the part can be purchased at any hardware shop or made out of available items. Examples include battery cables, shims, and certain washers and nuts.

“Not Sold Separately” — Indicates that an item cannot be purchased as a separate item and is either part of an assembly/kit that can be purchased, or is not available for sale through Multiquip.

SUGGESTED SPARE PARTS

DCA45USI W/ISUZU BB-4JG1T DIESEL ENGINE

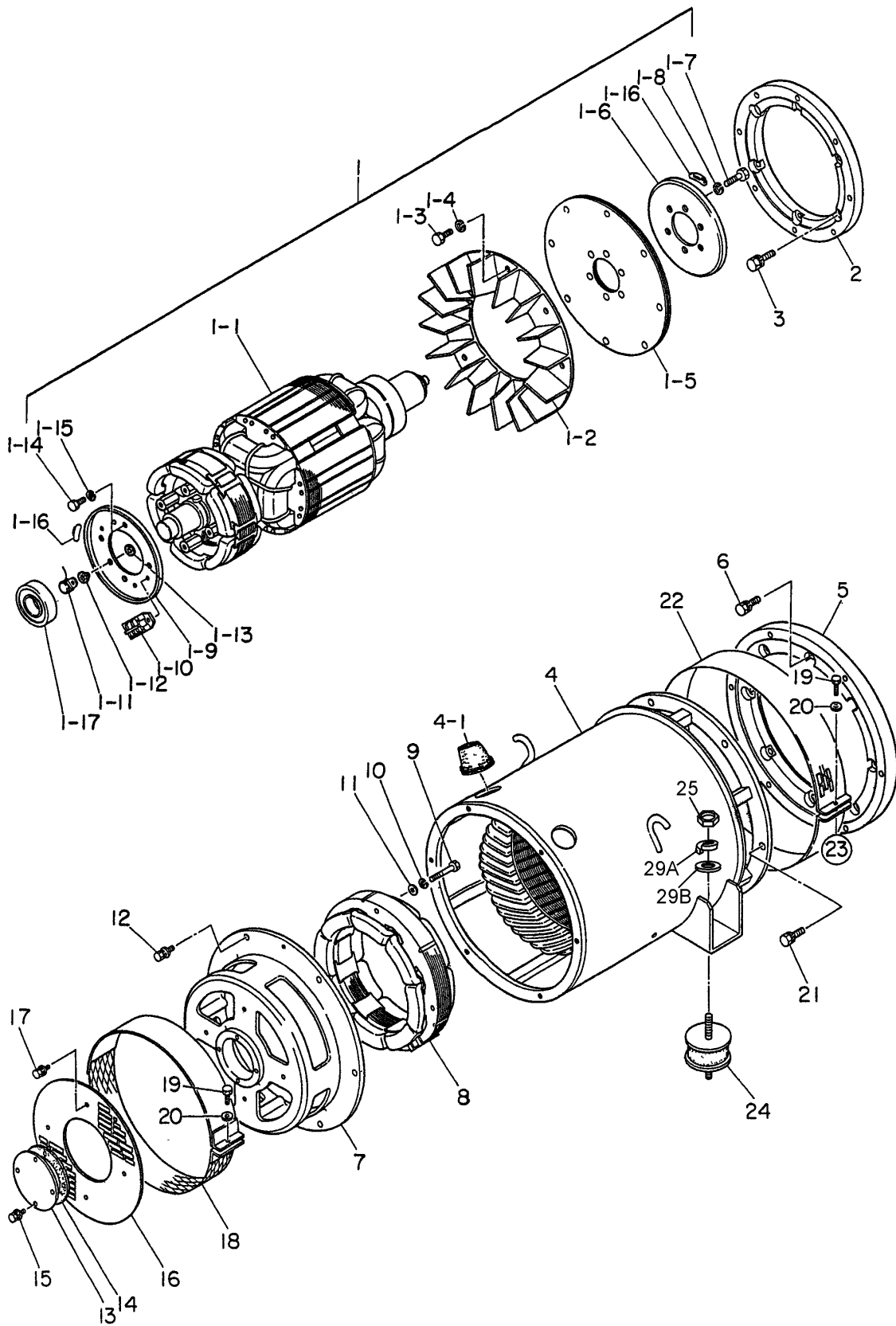
1 TO 3 UNITS

Qty.	P/N	Description
3.....	.8970497081.....	OIL FILTER
3.....	.8943692993.....	FUEL FILTER
3.....	.0602046681.....	AIR ELEMENT
1.....	.0602122272.....	UNIT, OIL PRESSURE
1.....	.0602123260.....	UNIT, WATER TEMPERATURE
1.....	.8972606490.....	FAN BELT
3.....	.8944024980.....	KEY, STARTER SWITCH
1.....	.0605505070.....	CAP, FUEL TANK
1.....	.9827200690.....	SENDER, OIL PRESSURE (ENGINE SIDE)
1.....	.8970785920.....	SENDER, WATER TEMPERATURE (ENGINE SIDE)
2.....	.0601802149.....	FUSE, 10A

NOTICE

Part numbers on this Suggested Spare Parts list may supersede/replace the P/N shown in the next pages of this book.

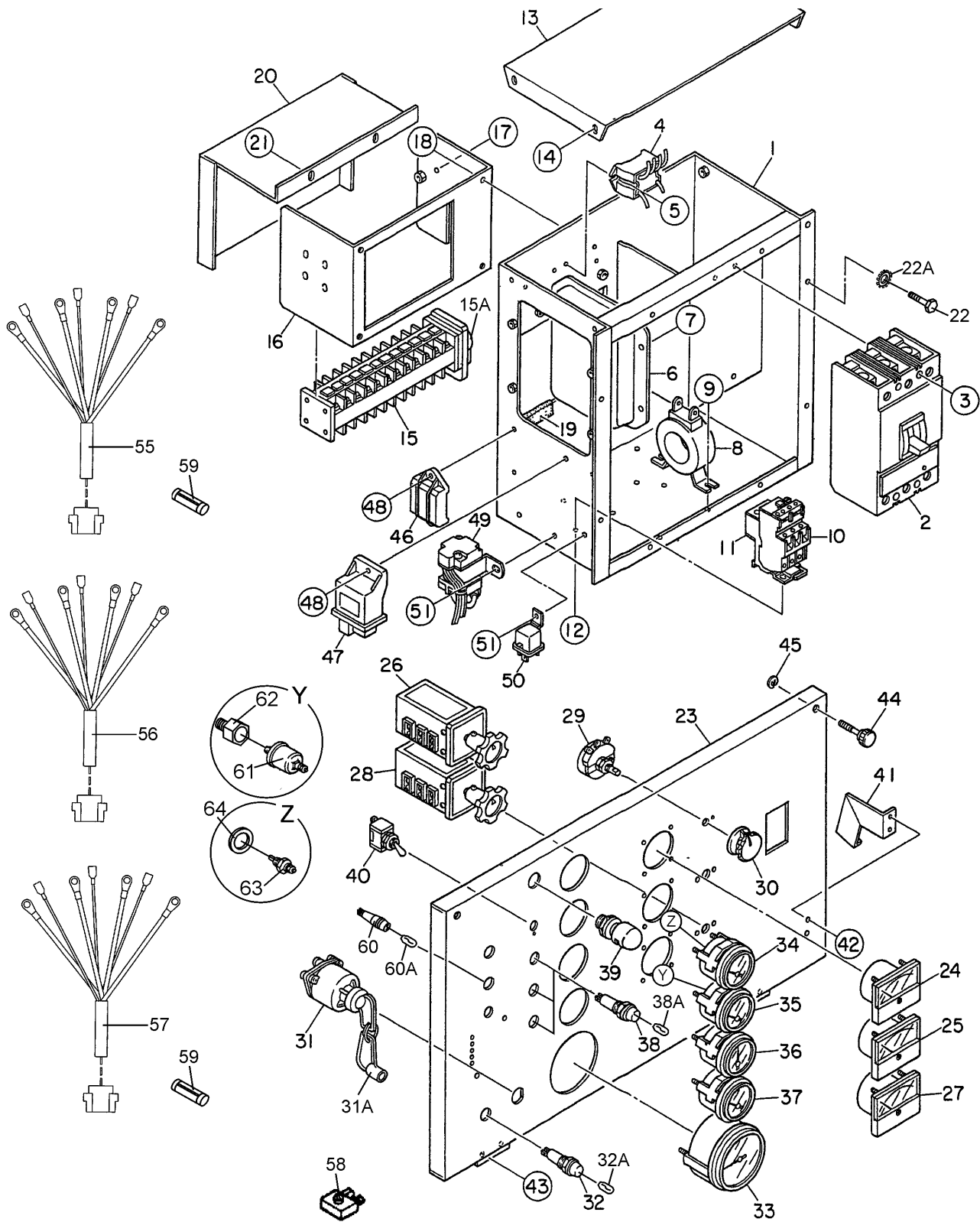
GENERATOR ASSY.



GENERATOR ASSY.

<u>NO.</u>	<u>PART NO.</u>	<u>PART NAME</u>	<u>QTY.</u>	<u>REMARKS</u>
1	B3110100202	ROTOR ASSY.	1	
1-1		FIELD ASSY.	1	
1-2	8051070003	FAN	1	
1-3	0010310035	HEX, HEAD BOLT	8	
1-4	0042510000	SPRING WASHER	8	
1-5	8041611004	COUPLING DISK	4	
1-6	8041015003	BALANCING PLATE.....	1	PURCHASE SET OF 1-16
1-7	0010310025	HEX, HEAD BOLT	6	
1-8	0042510000	SPRING WASHER	6	
1-9	8001026013	SET PLATE, RECTIFIER BALANCING PLATE..	1	PURCHASE SET OF 1-16
1-10	0601821349	RECTIFIER.....	2	PT3610
1-11	0601822601	SURGE ABSORBER.....	1	ERZ-M14JK621A
1-12	8001020004	INSULATOR WASHER	1	
1-13	8001020504	INSULATOR WASHER	1	
1-14	0010108020	HEX, HEAD BOLT	4	
1-15	0040008000	SPRING WASHER	4	
1-16	0601000209	BALANCING WEIGHT KIT	1	
1-17	0071906310	BEARING.....	1	6310DDU C3
2	M1164400003	COUPLING RING	1	
3	0012808030	HEX, HEAD BOLT	6	
4	B3130100103	STATOR ASSY.	1	
4-1	0845041904	GROMMET	2	
5	M1164600003	COUPLING ADAPTER	1	
6	0012810030	HEX, HEAD BOLT	8	
7	8041315202	END BRACKET	1	
8	8041350013	FIELD ASSY. EXCITER	1	
9	0010308065	HEX, HEAD BOLT	4	
10	0042608000	SPRING WASHER	4	
11	0041208000	PLAIN WASHER	4	
12	0017108030	HEX, HEAD BOLT	6	
13	8041310024	COVER, BEARING	1	
14	8041312014	GASKET, BEARING	1	
15	0017106012	HEX, HEAD BOLT	4	
16	8041331014	COVER, END BRACKET	1	
17	0017106012	HEX, HEAD BOLT	4	
18	8001333003	COVER, END BRACKET	1	
19	0340406040	HEX, HEAD BOLT	2	
20	0041206000	PLAIN WASHER	2	
21	0012810030	HEX, HEAD BOLT	6	
22	8051332014	COVER, FAN	1	
23	0600815000	NUT	1	
24	0605000055	RUBBER SUSPENSION	2	
25	0030012000	HEX, NUT	2	
25A	0040012000	SPRING WASHER	2	
25B	0041212000	PLAIN WASHER	2	

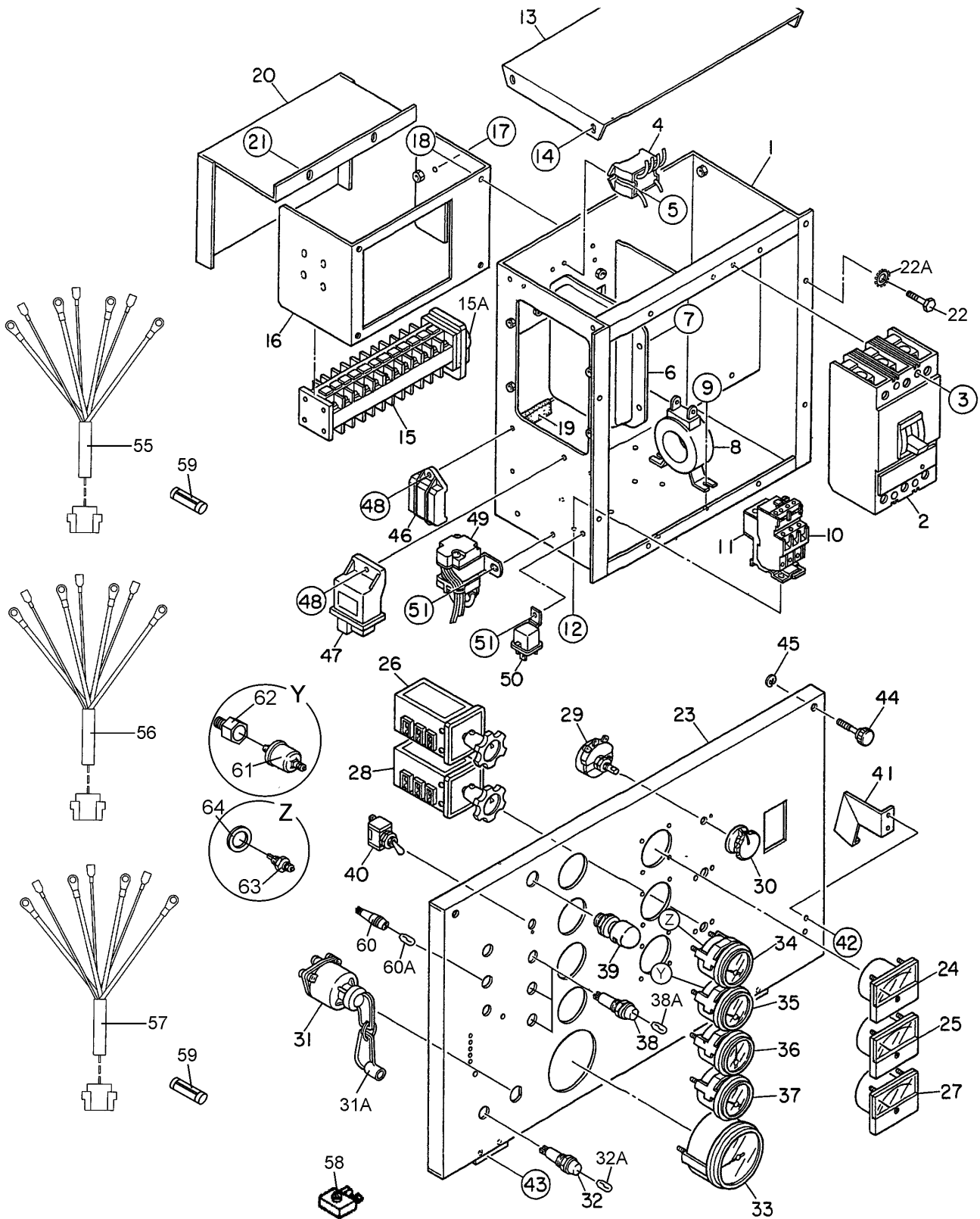
CONTROL BOX ASSY.



CONTROL BOX ASSY.

<u>NO.</u>	<u>PART NO.</u>	<u>PART NAME</u>	<u>QTY.</u>	<u>REMARKS</u>
1	M1214000102	CONTROL BOX	1	
2	0601808825	CIRCUIT BREAKER, 3-POLE, 110A.....	1.....	KAF361101039
3	0021005080	MACHINE SCREW	4	
4	0601823863	RELAY UNIT	2.....	MSA9013A
5	0027104016	MACHINE SCREW	4	
6	0601820671	AUTOMATIC VOLTAGE REGULATOR.....	1.....	NTA-5A-2DB
7	0027105016	MACHINE SCREW	4	
8	0601806116	CURRENT TRANSFORMER.....	3.....	812-943 75/5A
9	0027106016	MACHINE SCREW	6	
10	0601820845	OVER CURRENT RELAY	1.....	LR2D1308
11	0601820846	OVER CURRENT RELAY	1.....	LA7D1064
12	0027104016	MACHINE SCREW	2	
12A	0207004000	HEX, NUT	2	
13	M1213500303	CONTROL BOX COVER	1	
14	0016906016	HEX, HEAD BOLT	4	
15	M1201000004	SELECTOR SWITCH	1.....	VY-40
15A	TBD KNOB,	SELECTOR	1	
16	M1215601204	SWITCH BRACKET	1	
17	0027103010	MACHINE SCREW	4	
18	0016906016	HEX, HEAD BOLT	4	
19	0330000530	EDGING	1	
20	M1215601104	SWITCH COVER	1	
21	0016906016	HEX, HEAD BOLT	3	
22	0016906016	HEX, HEAD BOLT	8	
22A	0040506000	TOOTHED WASHER	1	
23	M1224000003	CONTROL PANEL	1	
24	0601807641	FREQUENCY METER.....	1.....	FCF-6 45~65Hz 240V
25	0601808986	AC AMMETER	1.....	ACF-6 0~75A/150A:5A
26	0601801040	CHANGE-OVER SWITCH, AMMETER	1.....	SL-2 AS
27	0601806859	AC VOLTMETER	1.....	SCF-6 0~600V
28	0601801041	CHANGE-OVER SWITCH, VOLTMETER	1.....	SL-2 VS

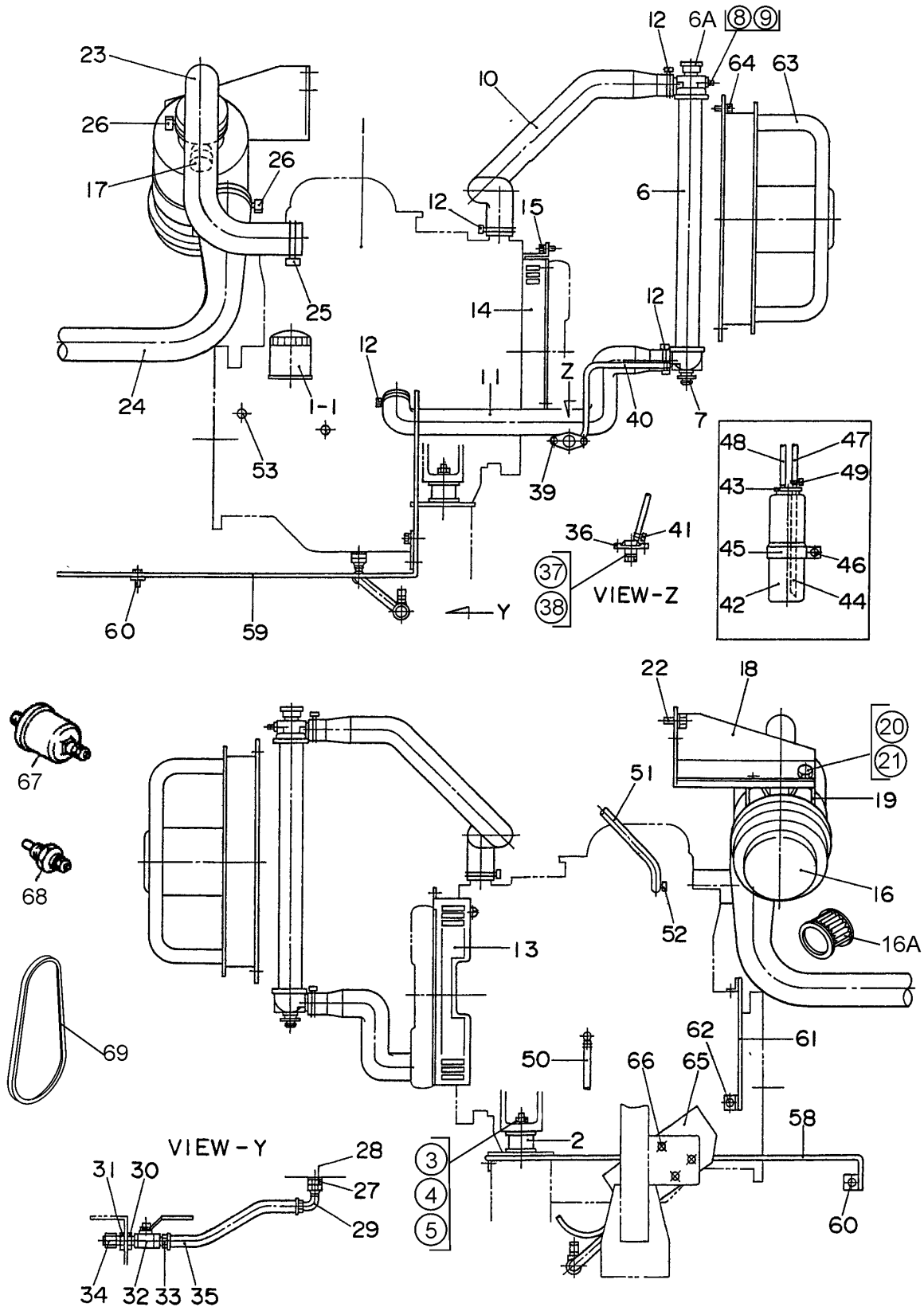
CONTROL BOX ASSY.



CONTROL BOX ASSY.

<u>NO.</u>	<u>PART NO.</u>	<u>PART NAME</u>	<u>QTY.</u>	<u>REMARKS</u>
29	0601840073	RHEOSTAT (VOLTAGE REGULATOR)	1.....	RA20A2SE102BJ 2W 1K OHM
30	0601840121	KNOB	1	
31	0602100009	STARTER SWITCH	1.....	ISUZU 897044-4180
31A	8944024980	IGNITION KEY	1	
32	0602103092	PREHEAT LAMP.....	1.....	PL-05
32A	0601810245	BULB, E-10 T-10 DC18V	1	
33	0602120095	TACHOMETER	1.....	103680
34	0602122093	OIL PRESSURE GAUGE.....	1.....	100174
35	0602123090	WATER TEMPERATURE GAUGE.....	1.....	100683
36	0602121080	CHARGING AMMETER.....	1.....	100158
37	0602125090	FUEL GAUGE	1.....	100176
38	0602103092	ALARM LAMP, PL-05	3	
38	0602103092	ALARM LAMP, PL05.....	4.....	S/N 8200081 AND ABOVE
38A	0601810245	BULB, E-10 T-10 DC18V	3	
38A	0601810245	BULB, E-10 T-10 DC18V	4.....	S/N 8200081 AND ABOVE
39	0601810141	PANEL LIGHT	1.....	98268-00370
40	0601831330	SWITCH, PANEL LIGHT	1	
41	M1224100104	STOPPER	1	
42	0027105010	MACHINE SCREW	2	
43	0027105010	MACHINE SCREW	4	
44	M9220100004	SET SCREW	2	
45	0080200007	SNAP RING	2	
46	0602200432	EMERGENCY RELAY	1.....	897111-9621
47	0602202506	PREHEAT CONTROLLER.....	1.....	897246-5100
48	0016906020	HEX, HEAD BOLT	3	
49	0602200305	SAFETY RELAY	1.....	182553-0430
50	0602201400	RELAY	1.....	582550-0290
51	0016906016	HEX, HEAD BOLT	3	
52	0606503062	FUEL LEAK DETECTED SWITCH	1	
53	M1414800104	BRACKET	1	
54	0016908020	HEX, HEAD BOLT	2	
55	M1247700114	WIRE HARNESS, GENERATOR	1	
56	M1358200112	WIRE HARNESS, ENGINE	1	
57	M3357200304	WIRE, HARNESS, FUEL LEAK.....	1.....	S/N 8200081 AND ABOVE
58	0601823223	RECTIFIER	2.....	S/N 8200001 ~ 8200080
58	0601823245	RECTIFIER	2.....	S/N 8200001 ~ 8200080
59	0601802149	FUSE, 10A	2.....	S/N 8200081 AND ABOVE
60	0602103092	ALARM LAMP, PL05.....	4.....	S/N 8200081 AND ABOVE
60A	0601810245	BULB, E-10 T-10 DC18V	4.....	S/N 8200081 AND ABOVE
61	0602122272	UNIT, OIL PRESSURE.....	1.....	108497
62	M9200100004	ADAPTER	1	
63	0602123260	UNIT, WATER TEMPERATURE.....	1.....	02094-00
64	0602021109	PACKING	1.....	909572-0140

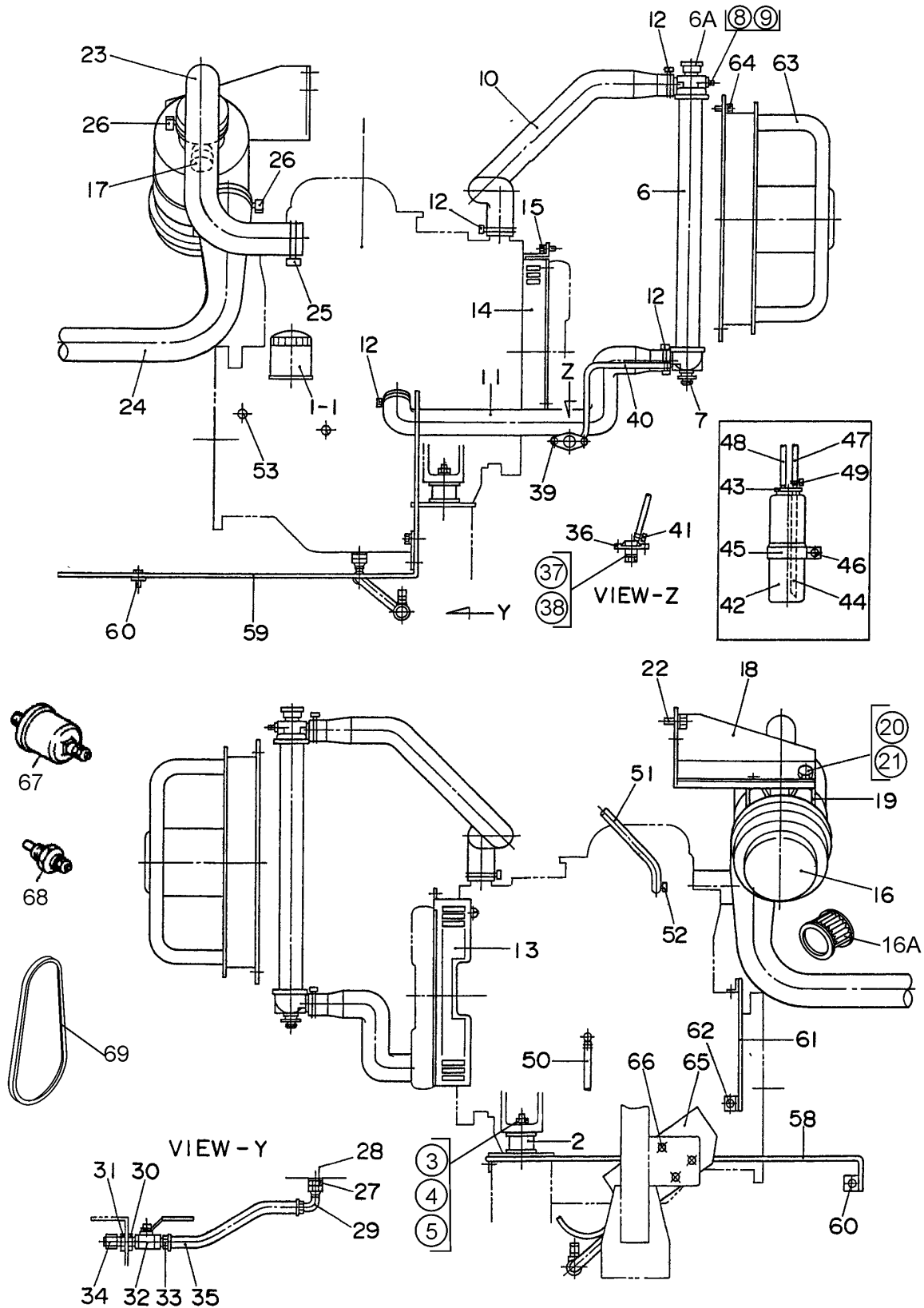
ENGINE AND RADIATOR ASSY.



ENGINE AND RADIATOR ASSY.

<u>NO.</u>	<u>PART NO.</u>	<u>PART NAME</u>	<u>QTY.</u>	<u>REMARK</u>
1	M1924200014	ENGINE	1.....	ISUZU BB-4JG1T
1-1	897049-7081	CARTRIDGE, OIL FILTER	1.....	REPLACES 0602041214
2	0605000048	RUBBER SUSPENSION	2	
3	0030010000	HEX, NUT	2	
4	0040010000	SPRING WASHER	2	
5	0041210000	PLAIN WASHER	2	
6	M1923200084	RADIATOR.....	1.....	2951-293-0000
6A	0602011079	CAP, RADIATOR.....	1.....	6713-092-0901
7	M9312200104	MOUNT RUBBER	2	
8	0016908040	HEX, HEAD BOLT	2	
9	0207008000	HEX, NUT	2	
10	M1311500003	RADIATOR HOSE	1	
11	M1311500103	RADIATOR HOSE	1	
12	0605515201	HOSE BAND	4	
13	M1424700104	FAN GUARD	1	
14	M1424700004	FAN GUARD	1	
15	0016906016	HEX, HEAD BOLT	7	
16	0602046582	AIR CLEANER.....	1.....	FPG08-2527
16A	0602046681	ELEMENT, AIR CLEANER.....	1.....	P82-8889
17	0602040651	INDICATOR, AIR CLEANER.....	1.....	RBX00-2352
18	M1374200104	BRACKET, AIR CLEANER	1	
19	0602040556	BAND, AIR CLEANER	1	
20	0016908020	HEX, HEAD BOLT	2	
21	0207008000	HEX, NUT	2	
22	0016910025	HEX, HEAD BOLT	2	
23	M1374100003	HOSE, AIR CLEANER	1	
24	M1374100103	HOSE, AIR CLEANER	1	
25	0605515148	HOSE BAND	1	
26	0605515200	HOSE BAND	2	
27	0602022560	ADAPTER	1	
28	M1320300304	PACKING	1	
29	0602022561	90 DEG. ELBOW	1	
30	0603306590	CONNECTOR	1	

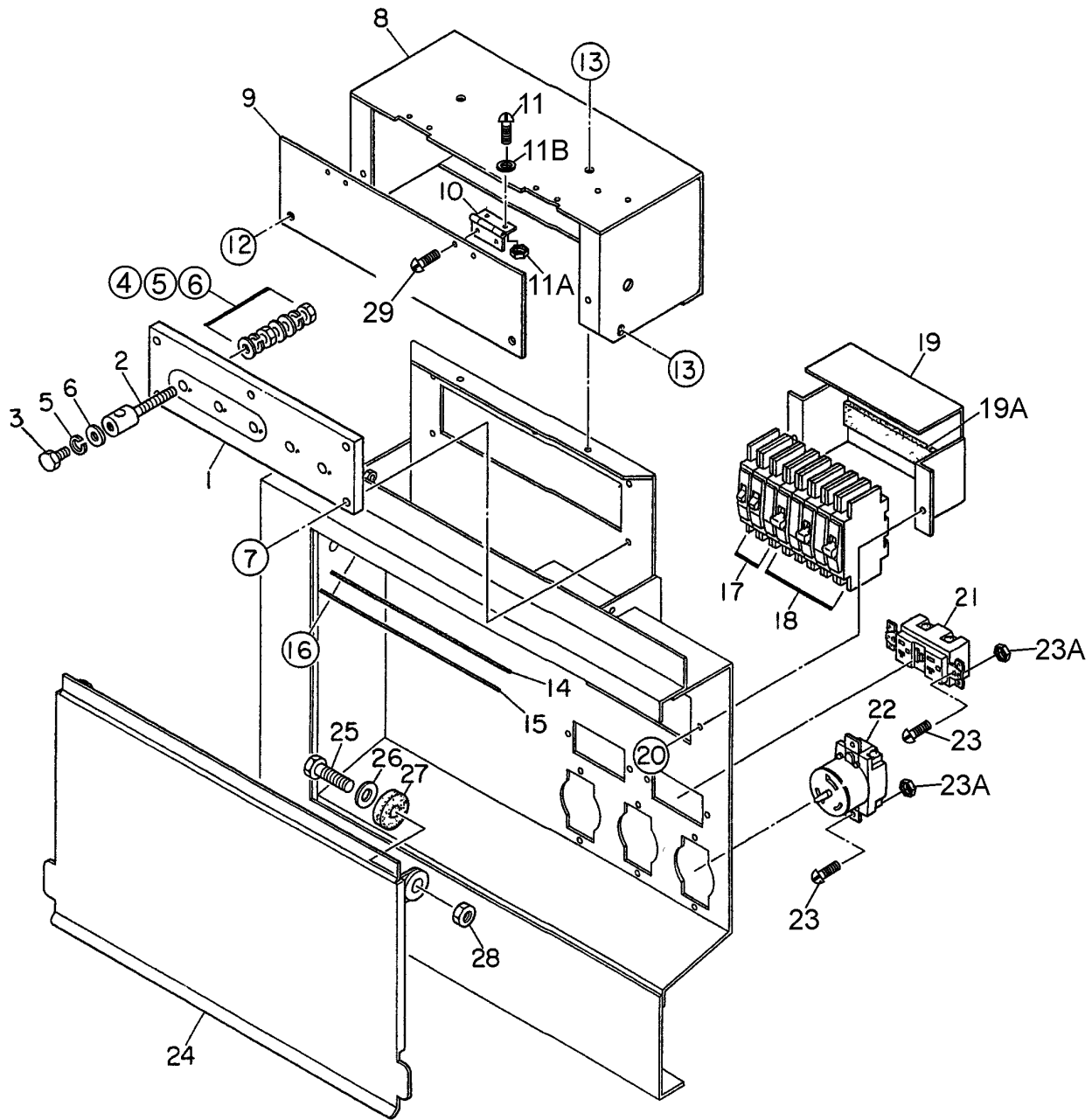
ENGINE AND RADIATOR ASSY. (CONT'D.)



ENGINE AND RADIATOR ASSY. (CONT'D.)

<u>NO.</u>	<u>PART NO.</u>	<u>PART NAME</u>	<u>QTY.</u>	<u>REMARKS</u>
31	0603300285	ROCKNUT	1	
32	0605511395	VALVE	1	
33	0603306395	HOSE JOINT	1	
34	0602021070	CAP	1	
35	0269200310	DRAIN HOSE	1	
36	M2320300103	DRAIN JOINT	1	
37	M920020004	PLUG	1	
38	0150000018	O-RING	1	
39	0016906016	HEX, HEAD BOLT	2	
40	0199100850	DRAIN HOSE	1	
41	0605515106	HOSE BAND	2	
42	M9300000003	RESERVE TANK	1	
43	M9300100003	CAP, RESERVE TANK	1	
44	0199100215	HOSE	1	
45	M1317100004	BRACKET, RESERVE TANK	1	
46	0016908020	HEX, HEAD BOLT	1	
47	0199101700	HOSE	1	
48	0193601200	HOSE	1	
49	0605515106	HOSE BAND	2	
50	0199800730	HOSE	1	
51	0269200480	BLOWBY HOSE	1	
52	0605515198	HOSE BAND	2	
53	0602120465	PICK UP, TACHOMETER	1	
58	M1358300104	HARNESS CLAMP	1	
59	M1358300004	HARNESS CLAMP	1	
60	0016908020	HEX, HEAD BOLT	5	
61	M1358300204	HARNESS CLAMP	1	
62	0017110020	HEX, HEAD BOLT	2	
63	M1924200004	MOTOR FAN	1	
64	0016910025	HEX, HEAD BOLT	4	
65	0602210810	ENGINE STOPPER	1.....	181900-1902
66	0027106016	MACHINE SCREW	3	
67	9827200690	SENDER, OIL PRESSURE	1	
68	8970785920	SENDER, WATER TEMPERATURE	1	
69	8971882810	V-BELT	1	

OUTPUT TERMINAL ASSY.



OUTPUT TERMINAL ASSY.

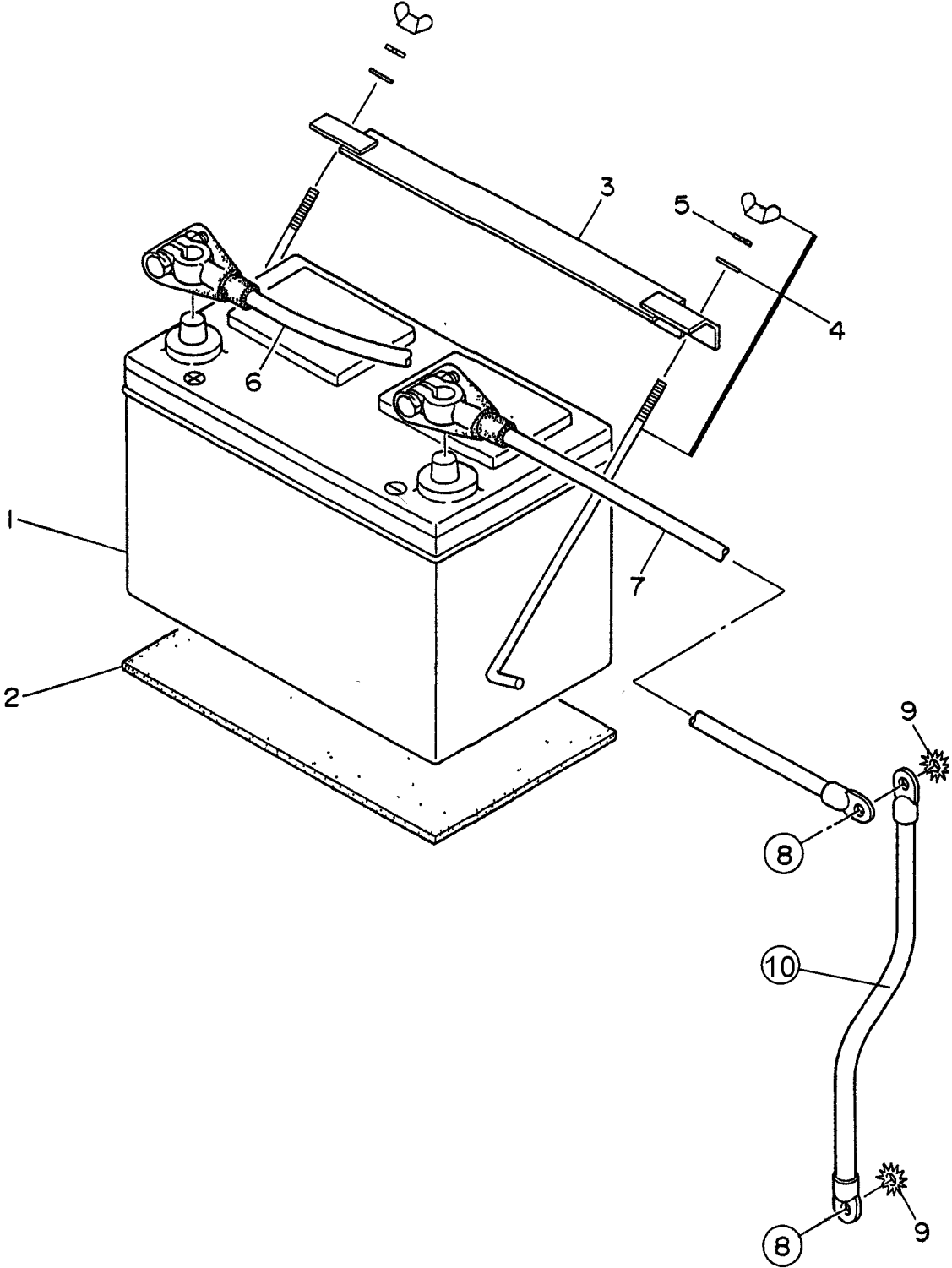
<u>NO.</u>	<u>PART NO.</u>	<u>PART NAME</u>	<u>QTY.</u>	<u>REMARKS</u>
1	M1230700103	TERMINAL PANEL	1	
2	M9220100204	OUTPUT TERMINAL BOLT	5	
3	M9220100104	TIE SCREW	5	
4	0039310000	HEX, NUT	10	
5	0040010000	SPRING WASHER	15	
6	0041410000	PLAIN WASHER	20	
7	0016908025	HEX, HEAD BOLT	5	
8	M1236100613	TERMINAL COVER	1	
9	M1236100704	OUTPUT WINDOW	1	
10	0605010040	HINGE	2	
11	0027103010	MACHINE SCREW	4	
11A	0030003000	HEX, NUT	8	
11B	0041203000	PLAIN WASHER	4	
12	0016906020	HEX, HEAD BOLT	2	
13	0016906016	HEX, HEAD BOLT	4	
14	M1236400004	CABLE OUTLET COVER	1	
15	M1236300004	SUPPORTER, CABLE OUTLET COVER	1	
16	0016906020	HEX, HEAD BOLT	6	
17	0601808803	CIRCUIT BREAKER, 1-POLE, 20A.....	2.....	QOU 120B
18	0601808804	CIRCUIT BREAKER, 2-POLE, 50A.....	3.....	QOU 250B
19	M1260700304	BREAKER FITTING COVER	1	
19A	0222100150	CUSHION RUBBER	1	
20	0016906020	HEX, HEAD BOLT	2	
21	0601812598	RECEPTACLE	2.....	GF-530EM 125V 20A X 2
22	0601812538	RECEPTACLE	3.....	CS6369 250V 50A
23	0027104016	MACHINE SCREW	10	
23A	0207004000	HEX, NUT	10	
24	M1236100803	TERMINAL COVER	1	
25	0010112045	HEX, HEAD BOLT	2	
26	0041212000	PLAIN WASHER	2	
27	M9310200004	STAY RUBBER	2	
28	0030012000	HEX, NUT	2	
29	0027103010	MACHINE SCREW	4	

ADD THE FOLLOWING DIGITS AFTER THE PART NUMBER WHEN ORDERING ANY PAINTED PANEL TO INDICATE COLOR OF UNIT:

1-ORANGE	5-BLACK
2-WHITE	6-CATERPILLAR YELLOW
3-SPECTRUM GREY	7-CATO GOLD
4-SUNBELT GREEN	8-RED

THE SERIAL NUMBER MAY BE REQUIRED.

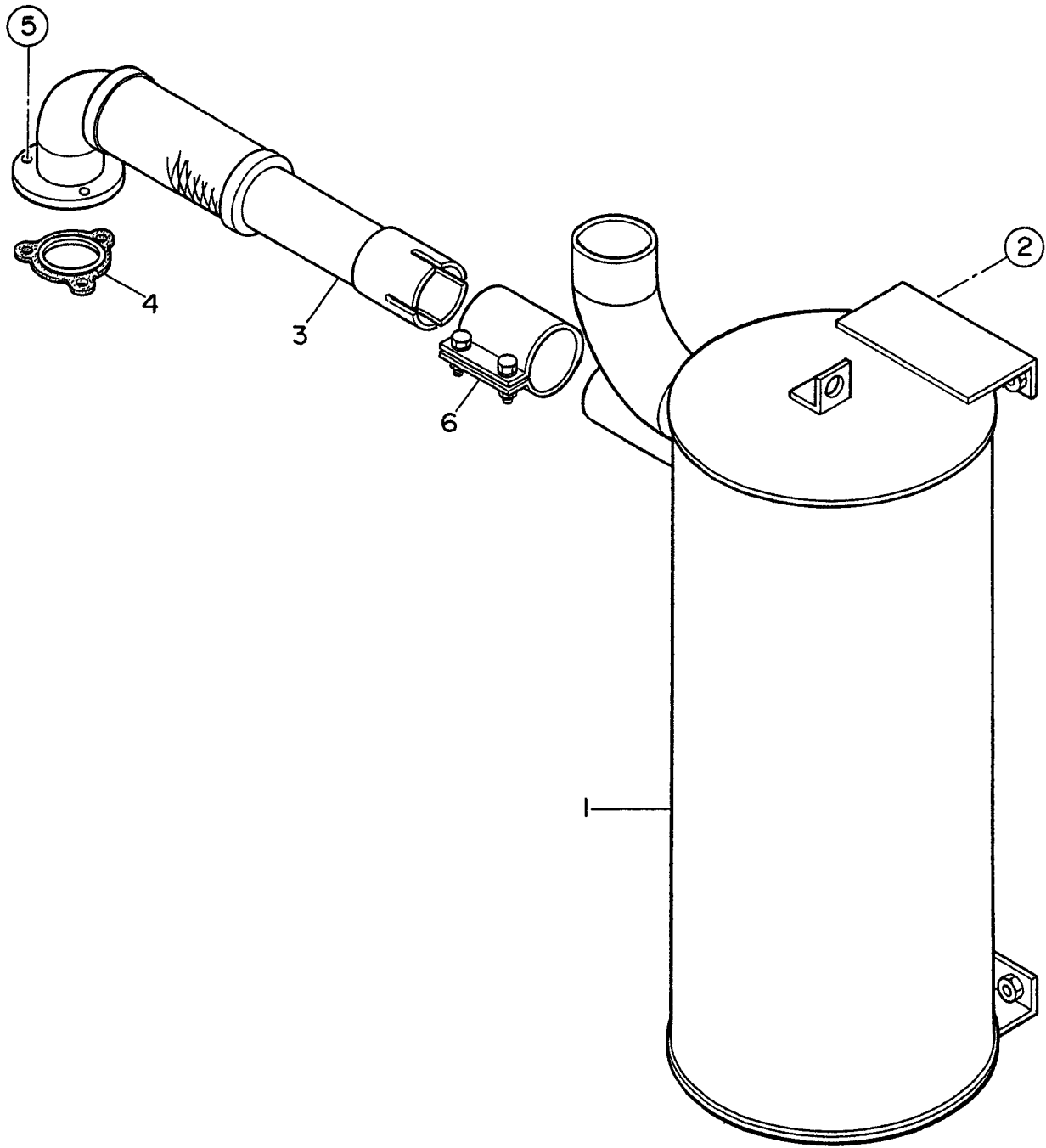
BATTERY ASSY.



BATTERY ASSY.

<u>NO.</u>	<u>PART NO.</u>	<u>PART NAME</u>	<u>QTY.</u>	<u>REMARKS</u>
1	0602220187	BATTERY	1	
2	M9310500014	BATTERY SHEET	1	
3	M9103000304	BATTERY BAND	1	
4	0602220920	BATTERY BOLT SET	2	
5	0040006000	SPRING WASHER	2	
6	M1347200004	BATTERY CABLE	1	
7	M1347200104	BATTERY CABLE	1	
8	0016910020	HEX, HEAD BOLT	2	
9	0040510000	TOOTHED WASHER	2	
10		CABLE, GROUND	1.....	MAKE LOCALLY

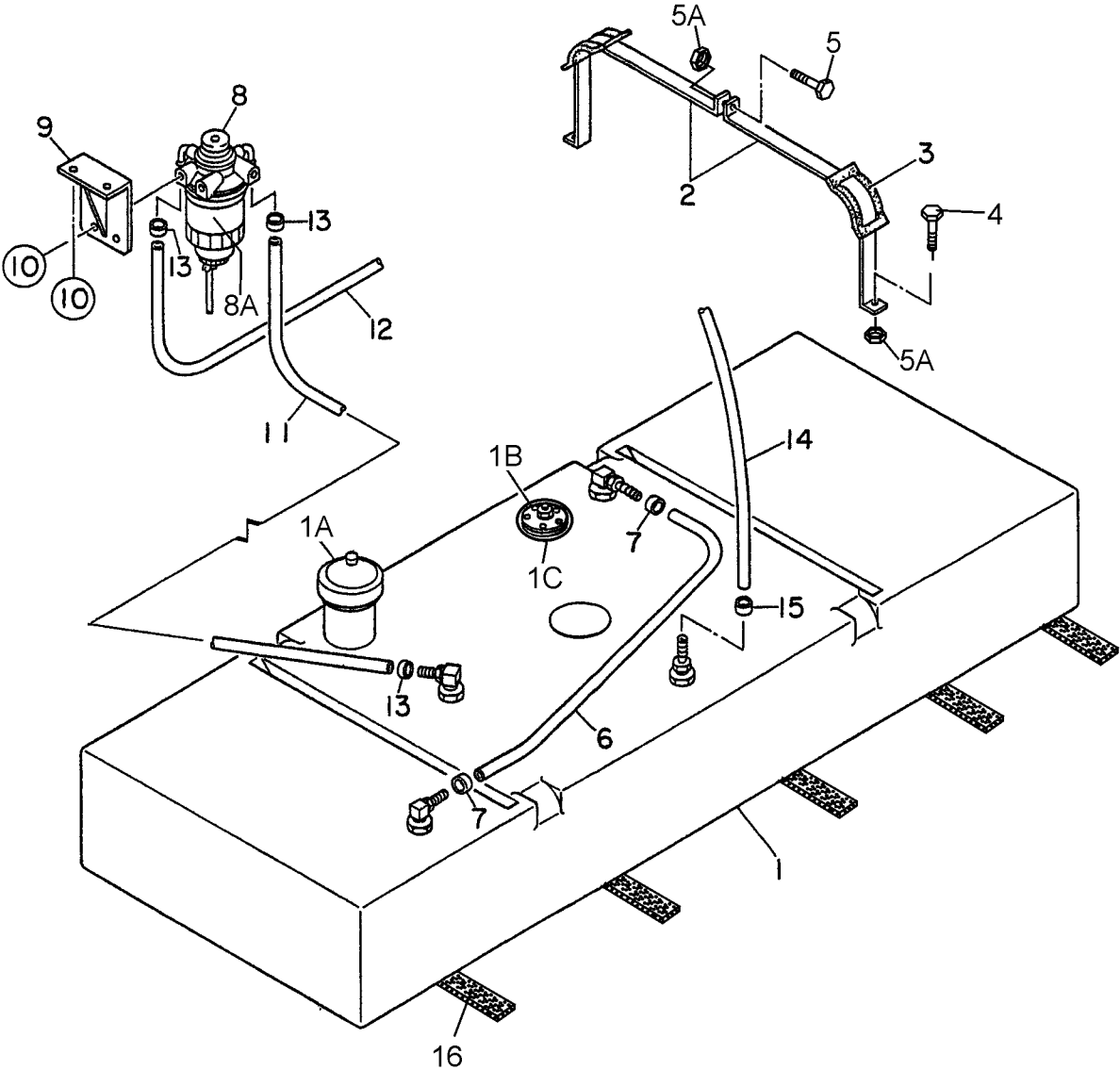
MUFFLER ASSY.



MUFFLER ASSY.

<u>NO.</u>	<u>PART NO.</u>	<u>PART NAME</u>	<u>QTY.</u>	<u>REMARKS</u>
1	M1331100102	MUFFLER	1	
2	0017112030	HEX, HEAD BOLT	4	
3	M1334000003	EXHAUST PIPE	1	
4	0602320101	GASKET	1.....	894369-0210
5	0039308000	HEX, NUT	6	
6	0602325088	SEAL CLAMP	1	

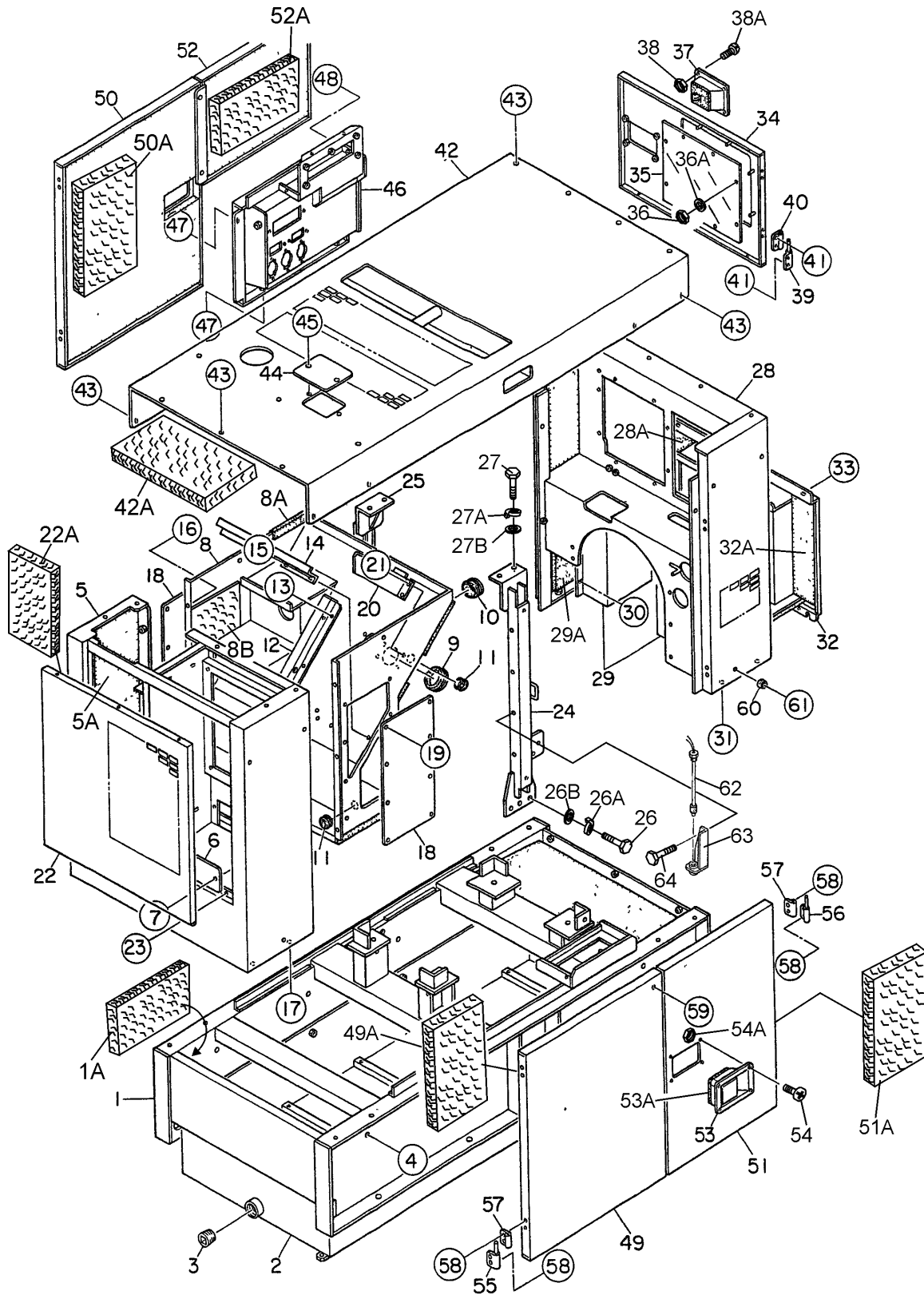
FUEL TANK ASSY.



FUEL TANK ASSY.

<u>NO.</u>	<u>PART NO.</u>	<u>PART NAME</u>	<u>QTY.</u>	<u>REMARKS</u>
1	M1364000102	FUEL TANK	1	
1A	0605505070	FUEL TANK CAP	1	
1B	0605501072	FUEL SENDER UNIT	1	
1C	0605516090	GASKET	1	
2	M1364200004	TANK BAND	4	
3	M9310500104	SUPPORTER SHEET	4	
4	0016908020	HEX, HEAD BOLT	4	
5	0016908065	HEX, HEAD BOLT	2	
5A	0207008000	HEX, NUT	6	
6	0191301300	VENT HOSE	1	
7	0605515109	HOSE BAND	2	
8	8943672924	PUMP PRIMARY	1	
8A	8980374810	ELEMENT FUEL FILTER W/O SENSOR	1	
9	M1367700004	BRACKET, FUEL FILTER	1	
10	0016908020	HEX, HEAD BOLT	4	
11	0191200550	SUCTION HOSE	1	
12	0191201600	SUCTION HOSE	1	
13	0605515108	HOSE BAND	4	
14	0191300750	RETURN HOSE	1	
15	0605515109	HOSE BAND	2	
15	0222100700	TANK SHEET	5	

ENCLOSURE ASSY.



ENCLOSURE ASSY.

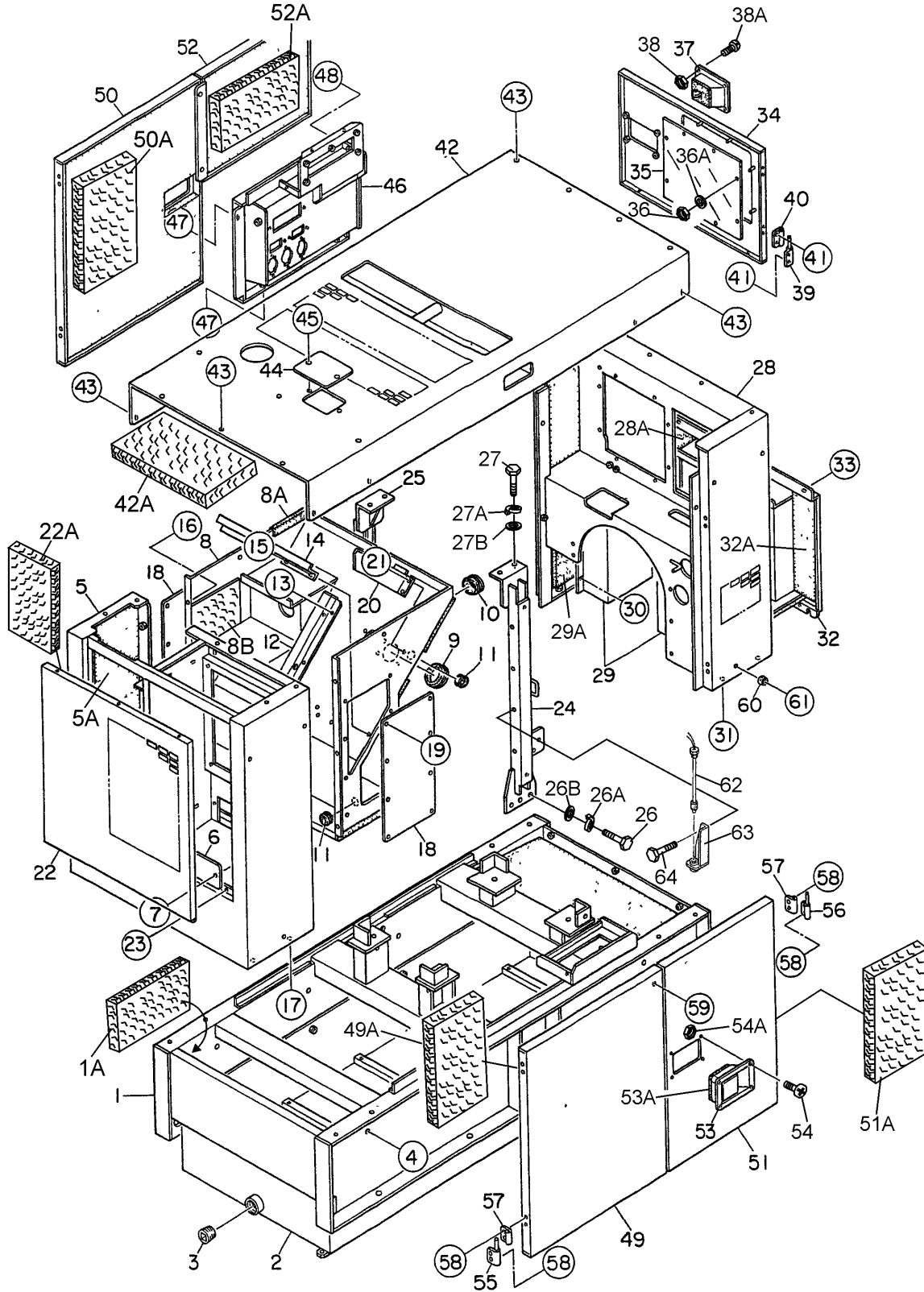
<u>NO.</u>	<u>PART NO.</u>	<u>PART NAME</u>	<u>QTY.</u>	<u>REMARKS</u>
1	M1414000202	BASE	1	
1A	M1494000004	ACOUSTIC SHEET	1	
2	M1414800003	ENVIRONMENTAL TANK	1	
3	0603306797	PLUG, 1-1/2	1	
4	0017110040	HEX, HEAD BOLT	8	
5	M1424000012	FRONT FRAME	1	
5A	M1494100004	ACOUSTIC SHEET	1	S/N 8200001 ~ 8200080
5A	M1493104804	ACOUSTIC SHEET	1	S/N 8200081 AND ABOVE
6	M1311600004	RADIATOR COVER	1	
7	0016908020	HEX, HEAD BOLT	2	
8	M1424000302	FRONT FRAME	1	S/N 8200001 ~ 8200080
8	M1424000402	FRONT FRAME	1	S/N 8200081 AND ABOVE
8A	0314502100	SEAL	1	
8B	M1494100004	ACOUSTIC SHEET	1	S/N 8200001 ~ 8200080
8B	M1493104804	ACOUSTIC SHEET	1	S/N 8200081 AND ABOVE
9	0601851756	GROMMET, C30-SG-70A	1	S/N 8200001 ~ 8200080
10	0601851736	GROMMET, C30-SG-60A	2	
11	0601850266	GROMMET, C30-SG-28A	4	
12	M1424500204	BLOWBY COVER	1	
13	0016906016	HEX, HEAD BOLT	6	
14	M1424500104	GUARD	1	
15	0016906016	HEX, HEAD BOLT	4	
16	0016908020	HEX, HEAD BOLT	8	
17	0016908020	HEX, HEAD BOLT	4	
18	M1424200504	DUCT COVER	2	
19	0016906016	HEX, HEAD BOLT	16	
20	M1311600104	HOSE COVER	1	S/N 8200001 ~ 8200080
20	M1484400004	HOSE COVER	1	S/N 8200081 AND ABOVE
20	M1484400103	HOSE COVER	1	S/N 8200081 AND ABOVE
21	0016906018	HEX, HEAD BOLT	4	
22	M1424200303	COVER, FRONT FRAME	1	S/N 8200001 ~ 8200080
22	M1424200313	COVER, FRONT FRAME	1	S/N 8200081 AND ABOVE
22A	M1494100104	ACOUSTIC SHEET	1	
23	0016908020	HEX, HEAD BOLT	3	
24	M1434300203	CENTER FRAME	1	
25	M1434300303	CENTER FRAME	1	
26	0010116040	HEX, HEAD BOLT	6	

ADD THE FOLLOWING DIGITS AFTER THE PART NUMBER WHEN ORDERING ANY PAINTED PANEL TO INDICATE COLOR OF UNIT:

1-ORANGE	5-BLACK
2-WHITE	6-CATERPILLAR YELLOW
3-SPECTRUM GREY	7-CATO GOLD
4-SUNBELT GREEN	8-RED

THE SERIAL NUMBER MAY BE REQUIRED.

ENCLOSURE ASSY. (CONT'D.)

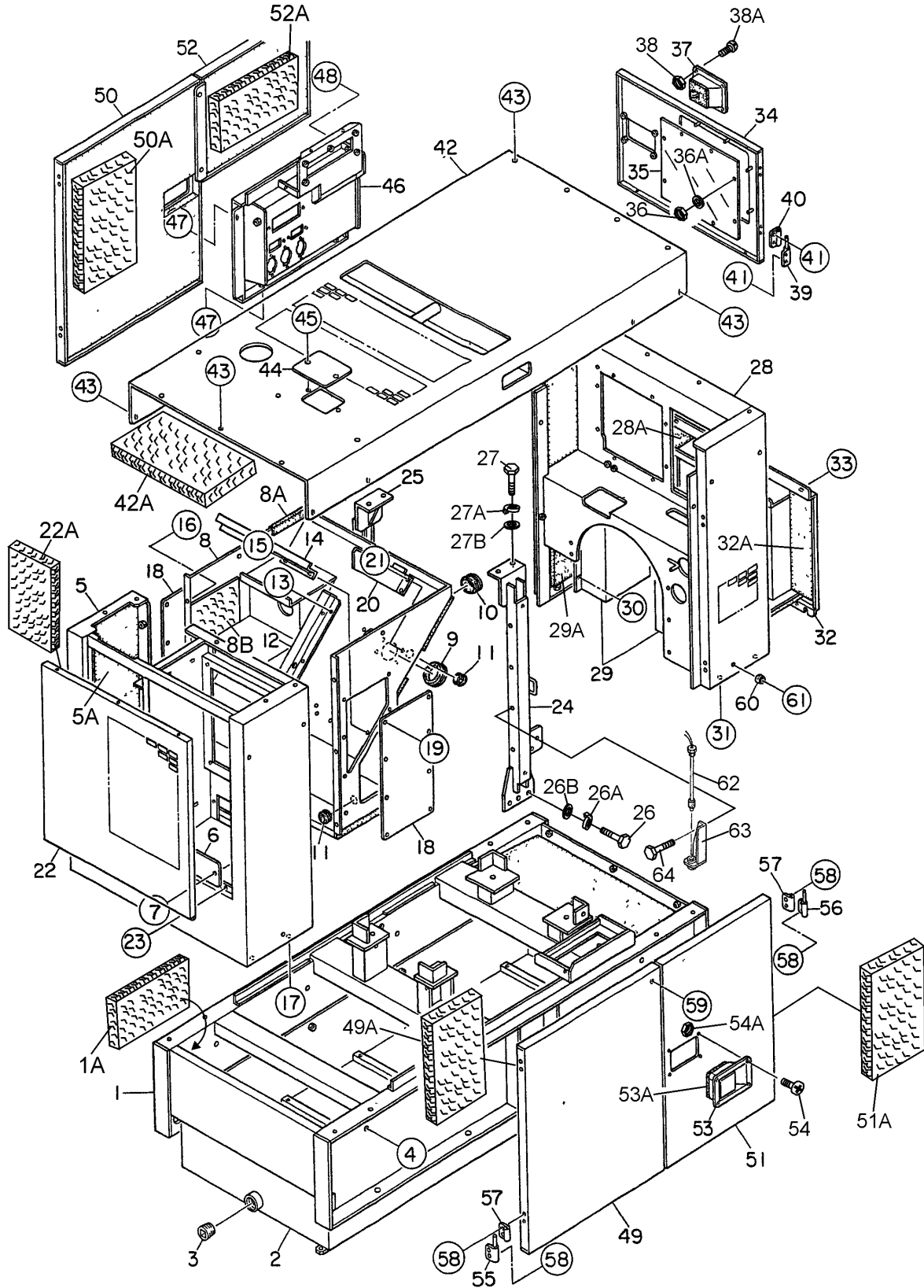


ENCLOSURE ASSY. (CONT'D.)

<u>NO.</u>	<u>PART NO.</u>	<u>PART NAME</u>	<u>QTY.</u>	<u>REMARKS</u>
26A	0040016000	SPRING WASHER	6	
26B	0041216000	PLAIN WASHER	6	
27	0010116040	HEX, HEAD BOLT	4	
27A	0040016000	SPRING WASHER	4	
27B	0041216000	PLAIN WASHER	4	
28	M1444000102	REAR FRAME	1	
28A	M1494300003	ACOUSTIC SHEET	1	
29	M1444800004	DUCT	2	
29A	M1494300204	ACOUSTIC SHEET	1	
30	0207006000	HEX, NUT	12	
31	0016908020	HEX, HEAD BOLT	4	
32	M1444300003	REAR COVER	1	
32A	M1494300104	ACOUSTIC SHEET	1	
33	0016908020	HEX, HEAD BOLT.....	6.....	S/N 8200001 ~ 8200080
33	0019208020	HEX, HEAD BOLT.....	6.....	S/N 8200081 AND ABOVE
34	M1444200003	REAR DOOR	1	
35	M1444600004	WINDOW PLATE	1	
36	0207306000	HEX, NUT	8	
36A	0041206000	PLAIN WASHER	8	
37	M9113000002	DOOR HANDLE ASSY.	1	
38	0021806016	MACHINE SCREW	4	
38A	0030006000	HEX, NUT	4	
39	M9112100404	HINGE	2	
40	M9112100604	HINGE	2	
41	0016908020	HEX, HEAD BOLT	8	
42	M1464000002	ROOF PANEL	1	
42A	M1494500004	ACOUSTIC SHEET	1	
43	0016908020	HEX, HEAD BOLT.....	18.....	S/N 8200001 ~ 8200080
43	0019208020	HEX, HEAD BOLT.....	18.....	S/N 8200081 AND ABOVE
44	M1465400104	COVER	1	
45	0016908020	HEX, HEAD BOLT.....	2.....	S/N 8200001 ~ 8200080
45	0019208020	HEX, HEAD BOLT.....	2.....	S/N 8200081 AND ABOVE
46	M1454200002	SPLASHER PANEL	1	
47	0016908020	HEX, HEAD BOLT	3	
48	0016908065	HEX, HEAD BOLT.....	1.....	S/N 8200001 ~ 8200080
48	0019208065	HEX, HEAD BOLT.....	1.....	S/N 8200081 AND ABOVE
49	M1454000403	SIDE DOOR	1	

ADD THE FOLLOWING DIGITS AFTER THE PART NUMBER WHEN ORDERING ANY PAINTED PANEL TO INDICATE COLOR OF UNIT:	
1-ORANGE	5-BLACK
2-WHITE	6-CATERPILLAR YELLOW
3-SPECTRUM GREY	7-CATO GOLD
4-SUNBELT GREEN	8-RED
THE SERIAL NUMBER MAY BE REQUIRED.	

ENCLOSURE ASSY. (CONT'D.)



ENCLOSURE ASSY. (CONT'D.)

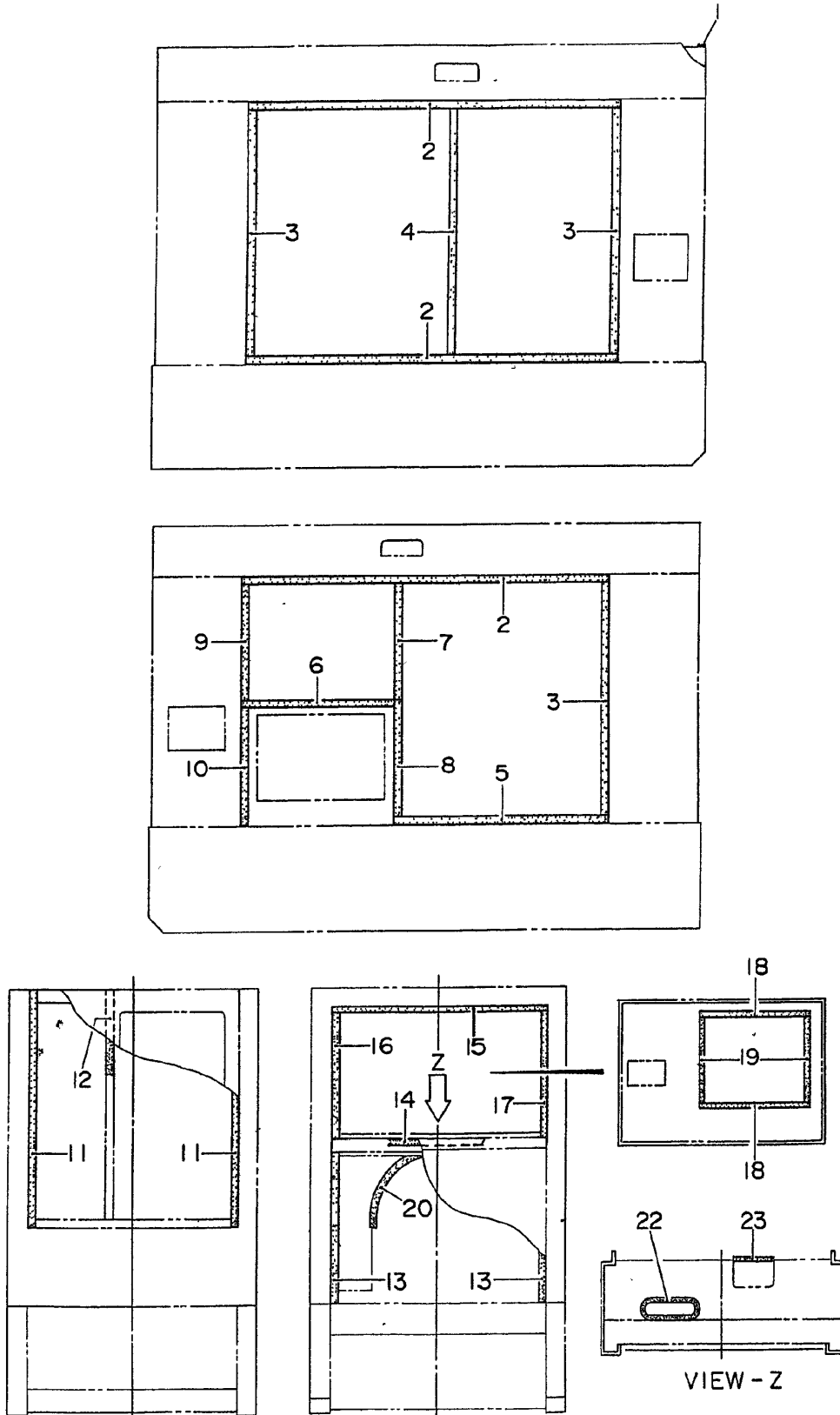
<u>NO.</u>	<u>PART NO.</u>	<u>PART NAME</u>	<u>QTY.</u>	<u>REMARKS</u>
49A	M1494400404	ACOUSTIC SHEET	1	
50	M1454000103	SIDE DOOR	1	
50A	M1494400104	ACOUSTIC SHEET	1	
51	M1454000503	SIDE DOOR	1	
51A	M1494400504	ACOUSTIC SHEET	1	
52	M1454000303	SIDE DOOR	1	
52A	M1494400304	ACOUSTIC SHEET	1	
53	M9113000002	DOOR HANDLE ASSY.	2	
53A	C9312500004	SEAL RUBBER	2	
54	0021806016	MACHINE SCREW	8	
54A	0030006000	HEX, NUT	8	
55	M9112100404	HINGE	4	
56	M9112100504	HINGE	4	
57	M9112100604	HINGE	8	
58	0016908020	HEX, HEAD BOLT	32	
59	0016908020	HEX, HEAD BOLT	2	
60	0601850097	STOPPER	5	
61	0027208025	MACHINE SCREW	5	
62	0605503062	FUEL LEAK DETECTION SWITCH.....	1.....	S/N 8200081 AND ABOVE
63	M1414800104	BRACKET	1.....	S/N 8200081 AND ABOVE
64	0017108020	HEX HEAD BOLT.....	2.....	S/N 8200081 AND ABOVE

ADD THE FOLLOWING DIGITS AFTER THE PART NUMBER WHEN ORDERING ANY PAINTED PANEL TO INDICATE COLOR OF UNIT:

1-ORANGE	5-BLACK
2-WHITE	6-CATERPILLAR YELLOW
3-SPECTRUM GREY	7-CATO GOLD
4-SUNBELT GREEN	8-RED

THE SERIAL NUMBER MAY BE REQUIRED.

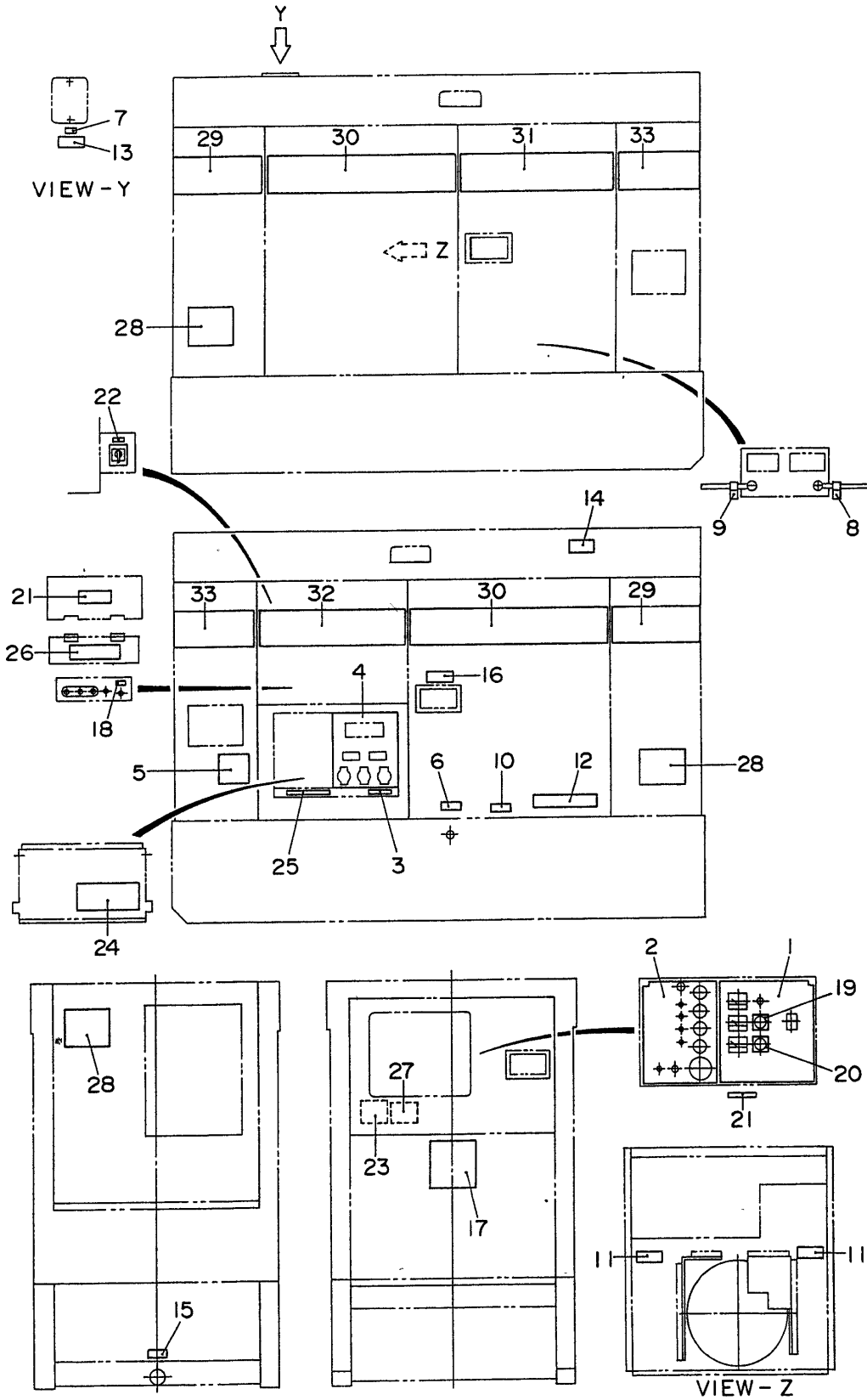
RUBBER SEALS ASSY.



RUBBER SEALS ASSY.

<u>NO.</u>	<u>PART NO.</u>	<u>PART NAME</u>	<u>QTY.</u>	<u>REMARKS</u>
1	0229200950	SEAL RUBBER	1	
2	0228901385	SEAL RUBBER	3	
3	0228900900	SEAL RUBBER	3	
4	0229400900	SEAL RUBBER	1	
5	0228900795	SEAL RUBBER	1	
6	0028900590	SEAL RUBBER	1	
7	0229400445	SEAL RUBBER	1	
8	0228800455	SEAL RUBBER	1	
9	0228900445	SEAL RUBBER	1	
10	0229200455	SEAL RUBBER	1	
11	0228100870	SEAL RUBBER	2	
12	0229200840	SEAL RUBBER	1	
13	0229200560	SEAL RUBBER	2	
14	0229200790	SEAL RUBBER	1	
15	0228800800	SEAL RUBBER.....	1.....	S/N 8200001 ~ 8200080
15	0228800800	SEAL RUBBER.....	2.....	S/N 8200081 AND ABOVE
16	0228900475	SEAL RUBBER.....	1.....	S/N 8200001 ~ 8200080
16	0228900470	SEAL RUBBER.....	1.....	S/N 8200081 AND ABOVE
17	0228800475	SEAL RUBBER.....	1.....	S/N 8200001 ~ 8200080
17	0228800470	SEAL RUBBER.....	1.....	S/N 8200081 AND ABOVE
18	0228100420	SEAL RUBBER	2	
19	0228100325	SEAL RUBBER	2	
20	0314500700	SEAL	1	
22	0330000460	EDGING	1	
23	0330000180	EDGING	1	

NAMEPLATE AND DECALS ASSY. (CONT'D.)



NAMEPLATE AND DECALS ASSY. (CONT'D.)

<u>NO.</u>	<u>PART NO.</u>	<u>PART NAME</u>	<u>QTY.</u>	<u>REMARKS</u>
1	M1511400002	DECAL, GENERATOR CONTROL.....	1.....	M11140000A
2	M1511400102	DECAL, ENGINE OPERATING	1.....	M11140010A
3	M1550000204	DECAL, NOTE.....	1.....	M15000020
4	M1550000703	DECAL, AUXILIARY OUTPUT.....	1.....	M15000070
5	M1550000804	DECAL, NOTE.....	1.....	M15000080
6	M9500000004	DECAL, OIL DRAIN PLUG	1.....	M90000000
7	M9500100004	DECAL, WATER	1.....	M90010000
8	M9500300004	DECAL, -.....	1.....	M90030000
9	M9500300104	DECAL, +.....	1.....	M90030010
10	M9500500004	DECAL, DIESEL FUEL.....	1.....	M90050000
11	M9503000004	DECAL, WARNING MOVING PARTS	2.....	M90300000
12	M9503000103	DECAL, WATER - OIL CHECK.....	1.....	M90300010
13	M9503100004	DECAL, WARNING HOT COOLANT.....	1.....	M90310000
14	M9503200004	DECAL, WARNING ENGINE EXHAUST	1.....	M90320000
15	M9510000004	DECAL, FLUID DRAIN	1.....	M91000000
16	M9510100004	DECAL, CAUTION HOT PARTS	1.....	M91010000
17	M9512200004	DECAL, MQ.....	1.....	M91220000
18	M9520000004	DECAL, GROUND.....	1.....	M92000000
19	M9520000104	DECAL, AMMETER CHANGE-OVER SW.....	1.....	M92000010
20	M9520000204	DECAL, VOLTMETER CHANGE-OVER SW.....	1.....	M92000020
21	M9520100004	DECAL, WARNING ELECTRIC SHOCK HAZARD	2.....	M92010000
22	M9520100204	DECAL, CAUTION.....	1.....	M92010020A
23	M9520100304	DECAL, SAFETY INSTRUCTION	1.....	M92010030
24	M9520100404	DECAL, DANGER HIGH VOLTAGE	1.....	M92010040
25	M9520100503	DECAL, WARNING.....	1.....	M92010050
26	M9520200003	DECAL, CONNECTION OF OUTPUT CABLE	1.....	M92020000
27	M9520200104	DECAL, OVER CURRENT RELAY.....	1.....	C92020010
28	M1561000004	DECAL, MQ POWER	3.....	S/N 8200001 ~ S/N 8200080
28	M1561000004	DECAL, MQ POWER	2.....	S/N 8200081~
29	M1561100004	STRIPE	2	
30	M1561100103	STRIPE, WHISPERWATT	2	
31	M1561100204	STRIPE, 45	1	
32	M1561100304	STRIPE, 45	1	
33	M1561100404	STRIPE	2	
34	M9510100304	DECAL, ENVIRONMENTAL WARNING	1.....	S/N 8200081 AND ABOVE
35	M9520000304	DECAL, FUEL LEAK DETECTED	1.....	S/N 8200081 AND ABOVE
36	0600500092	PLATE, MQ POWER	1.....	S/N 8200081 AND ABOVE
37	0021106016	MACHINE SCREW.....	4.....	S/N 8200081 AND ABOVE

PARTS MANUAL

HERE'S HOW TO GET HELP

PLEASE HAVE THE MODEL AND SERIAL
NUMBER ON HAND WHEN CALLING

UNITED STATES

Multiquip Inc.

(310) 537- 3700
6141 Katella Avenue Suite 200
Cypress, CA 90630
E-MAIL: mq@multiquip.com
WEBSITE: www.multiquip.com

CANADA

Multiquip

(450) 625-2244
4110 Industriel Boul.
Laval, Quebec, Canada H7L 6V3
E-MAIL: infocanada@multiquip.com

UNITED KINGDOM

Multiquip (UK) Limited Head Office

0161 339 2223
Unit 2, Northpoint Industrial Estate, Globe Lane,
Dukinfield, Cheshire SK16 4UJ
E-MAIL: sales@multiquip.co.uk

© COPYRIGHT 2024, MULTIQUIP INC.

Multiquip Inc, the MQ logo and the MQ Power logo are registered trademarks of Multiquip Inc. and may not be used, reproduced, or altered without written permission. All other trademarks are the property of their respective owners and used with permission.

This manual MUST accompany the equipment at all times. This manual is considered a permanent part of the equipment and should remain with the unit if resold.

The information and specifications included in this publication were in effect at the time of approval for printing. Illustrations, descriptions, references and technical data contained in this manual are for guidance only and may not be considered as binding. Multiquip Inc. reserves the right to discontinue or change specifications, design or the information published in this publication at any time without notice and without incurring any obligations.

Manufactured for
MQ Power Inc.
by
DENYO MANUFACTURING CORP.

