

PARTS MANUAL



ULTRA-SILENT™ SERIES
MODEL
DCA70USI
60 Hz GENERATOR
(ISUZU FF-4BG1T DIESEL ENGINE)

PARTS LIST NO. M2900000314

Revision #2 (05/14/24)

To find the latest revision of this publication or
associated operation manual, visit our website
at: www.mqpower.com



THIS MANUAL MUST ACCOMPANY THE EQUIPMENT AT ALL TIMES.

TABLE OF CONTENTS

MQ POWER DCA-70USI 60HZ WHISPERWATT GENERATOR

Explanation Of Code In Remarks Column..... 4
Suggested Spare Parts 5

Component Drawings

Generator Assembly 6-7
Control Box Assembly8-11
Engine and Radiator Assembly 12-15
Output Terminal Assembly..... 16-17
Battery Assembly 18-19
Muffler Assembly 20-21
Fuel Tank Assembly..... 22-23
Enclosure #1 Assembly 24-27
Enclosure #2 Assembly 28-29
Rubber Seals Assembly 30-31
Nameplate and Decals..... 32-33

NOTICE
Specifications and part numbers are subject to change without notice.

EXPLANATION OF CODE IN REMARKS COLUMN

The following section explains the different symbols and remarks used in the Parts section of this manual. Use the help numbers found on the back page of the manual if there are any questions.

NOTICE

The contents and part numbers listed in the parts section are subject to change without notice. Multiquip does not guarantee the availability of the parts listed.

SAMPLE PARTS LIST

NO.	PART NO.	PART NAME	QTY.	REMARKS
1	12345	BOLT	1	INCLUDES ITEMS W/%
2%		WASHER, 1/4 IN.		NOT SOLD SEPARATELY
2%	12347	WASHER, 3/8 IN. ...	1	MQ-45T ONLY
3	12348	HOSE	A/R	MAKE LOCALLY
4	12349	BEARING	1	S/N 2345B AND ABOVE

NO. Column

Unique Symbols — All items with same unique symbol (@, #, +, %, or >) in the number column belong to the same assembly or kit, which is indicated by a note in the “Remarks” column.

Duplicate Item Numbers — Duplicate numbers indicate multiple part numbers, which are in effect for the same general item, such as different size saw blade guards in use or a part that has been updated on newer versions of the same machine.

NOTICE

When ordering a part that has more than one item number listed, check the remarks column for help in determining the proper part to order.

PART NO. Column

Numbers Used — Part numbers can be indicated by a number, a blank entry, or TBD.

TBD (To Be Determined) is generally used to show a part that has not been assigned a formal part number at the time of publication.

A blank entry generally indicates that the item is not sold separately or is not sold by Multiquip. Other entries will be clarified in the “Remarks” Column.

QTY. Column

Numbers Used — Item quantity can be indicated by a number, a blank entry, or A/R.

A/R (As Required) is generally used for hoses or other parts that are sold in bulk and cut to length.

A blank entry generally indicates that the item is not sold separately. Other entries will be clarified in the “Remarks” Column.

REMARKS Column

Some of the most common notes found in the “Remarks” Column are listed below. Other additional notes needed to describe the item can also be shown.

Assembly/Kit — All items on the parts list with the same unique symbol will be included when this item is purchased.

Indicated by:

“INCLUDES ITEMS W/(unique symbol)”

Serial Number Break — Used to list an effective serial number range where a particular part is used.

Indicated by:

“S/N XXXXX AND BELOW”

“S/N XXXX AND ABOVE”

“S/N XXXX TO S/N XXX”

Specific Model Number Use — Indicates that the part is used only with the specific model number or model number variant listed. It can also be used to show a part is NOT used on a specific model or model number variant.

Indicated by:

“XXXXX ONLY”

“NOT USED ON XXXX”

“Make/Obtain Locally” — Indicates that the part can be purchased at any hardware shop or made out of available items. Examples include battery cables, shims, and certain washers and nuts.

“Not Sold Separately” — Indicates that an item cannot be purchased as a separate item and is either part of an assembly/kit that can be purchased, or is not available for sale through Multiquip.

SUGGESTED SPARE PARTS

DCA-70USI (60HZ) WHISPERWATT GENERATOR W/ISUZU FF-4BG1T DIESEL ENGINE

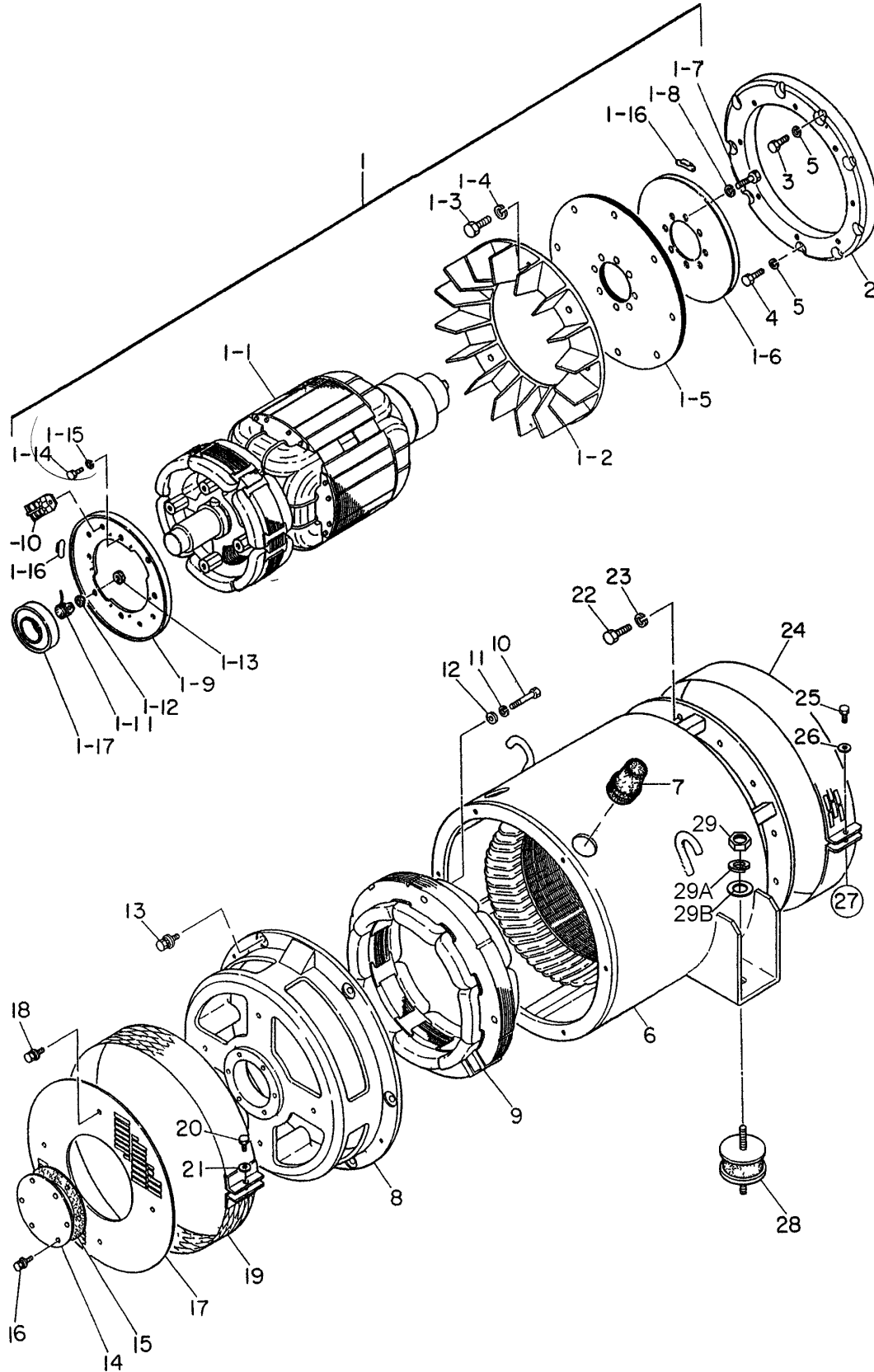
1 TO 3 UNITS

Qty.	P/N	Description
5.....	1132402311	FILTER, OIL
5.....	1132400791	FILTER, FUEL, PRIMARY
3.....	0602046365.....	ELEMENT, AIR
1.....	8972333820.....	BELT, FAN
1.....	0605505070.....	CAP, FUEL TANK
1.....	0602122272.....	UNIT, OIL PRESSURE
1.....	0602123260.....	UNIT, WATER TEMPERATURE
2.....	0601802149.....	FUSE, 10A
1.....	8971256000.....	SENDER, WATER SWITCH (ENGINE SIDE)
1.....	9827200690.....	SENDER, OIL SWITCH (ENGINE SIDE)
1.....	0605501079.....	SENDER, FUEL SWITCH

NOTICE

Part numbers on this Suggested Spare Parts list may supersede/replace the P/N shown in the next pages of this book.

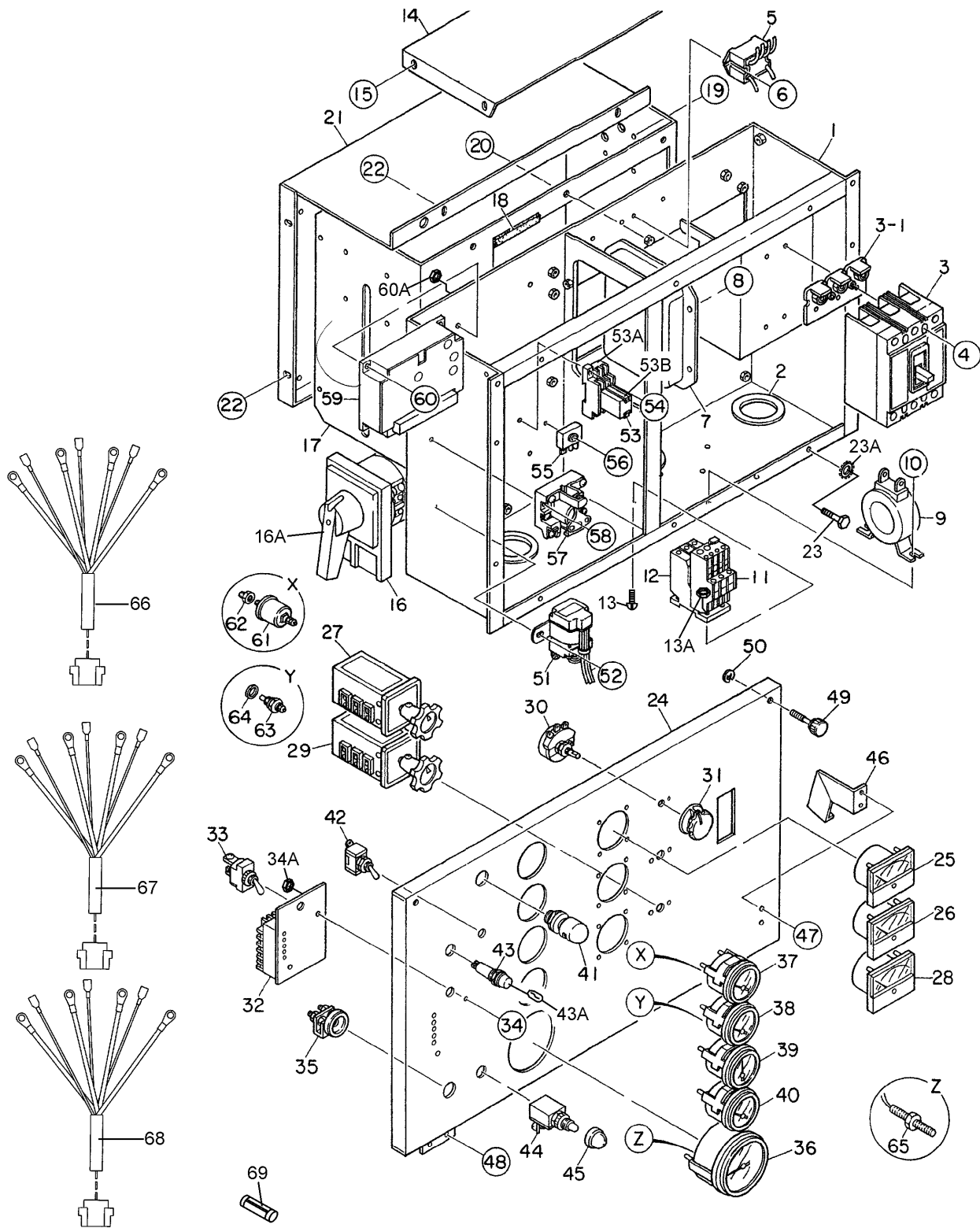
GENERATOR ASSY.



GENERATOR ASSY.

<u>NO.</u>	<u>PART NO.</u>	<u>PART NAME</u>	<u>QTY.</u>	<u>REMARKS</u>
1	B5110000102	ROTOR ASSY.....	1	INCLUDES ITEMS W/*
1-1*		FIELD ASSY.	1	
1-2*	8101070033	FAN	1	
1-3*	0010310035	HEX HEAD BOLT	8	
1-4*	0042510000	SPRING WASHER	8	
1-5*	8101611004	COUPLING DISK	5	
1-6*	8101015003	BALANCING PLATE.....	1	PURCHASE SET OF 1-16
1-7*	0012110030	HEX HEAD BOLT.....	8	S=26
1-8*	0042510000	SPRING WASHER	8	
1-9*	8101026013	SET PLATE, RECTIFIER.....	1	PURCHASE SET OF 1-16
1-10*	0601821349	RECTIFIER.....	2	PT3610
1-11*	0601822601	SURGE ABSORBER.....	1	ERZ-M14JK621A
1-12*	8001020004	INSULATOR WASHER	1	
1-13*	8001020504	INSULATOR WASHER	1	
1-14*	0010110020	HEX HEAD BOLT	4	
1-15*	0040010000	SPRING WASHER	4	
1-16*	0601000209	BALANCING WEIGHT KIT	1	
1-17*	0071906311	BEARING.....	1	6311DDU C3
2	M2163400103	COUPLING RING	1	
3	M9200100204	REAMER BOLT	2	
4	0010310030	HEX HEAD BOLT	7	
5	0042510000	SPRING WASHER	9	
6	B5130000103	STATOR ASSY.....	1	B5134000304
7	0845041904	GROMMET	2	
8	8191315292	END BRACKET	1	
9	8101350013	FIELD ASSY EXCITER.....	1	B5134000304
10	0012110070	HEX HEAD BOLT.....	4	S=26
11	0042610000	SPRING WASHER	4	
12	0041210000	PLAIN WASHER	4	
13	0017110035	HEX HEAD BOLT	6	
14	8101312014	COVER, BEARING	1	
15	8131312014	GASKET, BEARING	1	
16	0016906016	HEX HEAD BOLT	4	
17	8101331003	COVER, END BRACKET	1	
18	0016906016	HEX HEAD BOLT	4	
19	8101333003	COVER, END BRACKET	1	
20	0340406040	HEX HEAD BOLT	1	
21	0041606000	PLAIN WASHER	1	
22	0010110030	HEX HEAD BOLT	12	
23	0042510000	SPRING WASHER	12	
24	8111332014	COVER, FAN	1	
25	0340406040	HEX HEAD BOLT	1	
26	0041606000	PLAIN WASHER	1	
27	0600815000	NUT	1	
28	0605000010	RUBBER SUSPENSION	2	
29	0030012000	HEX NUT	2	
29A	0040012000	SPRING WASHER	2	
29B	0041212000	PLAIN WASHER	2	

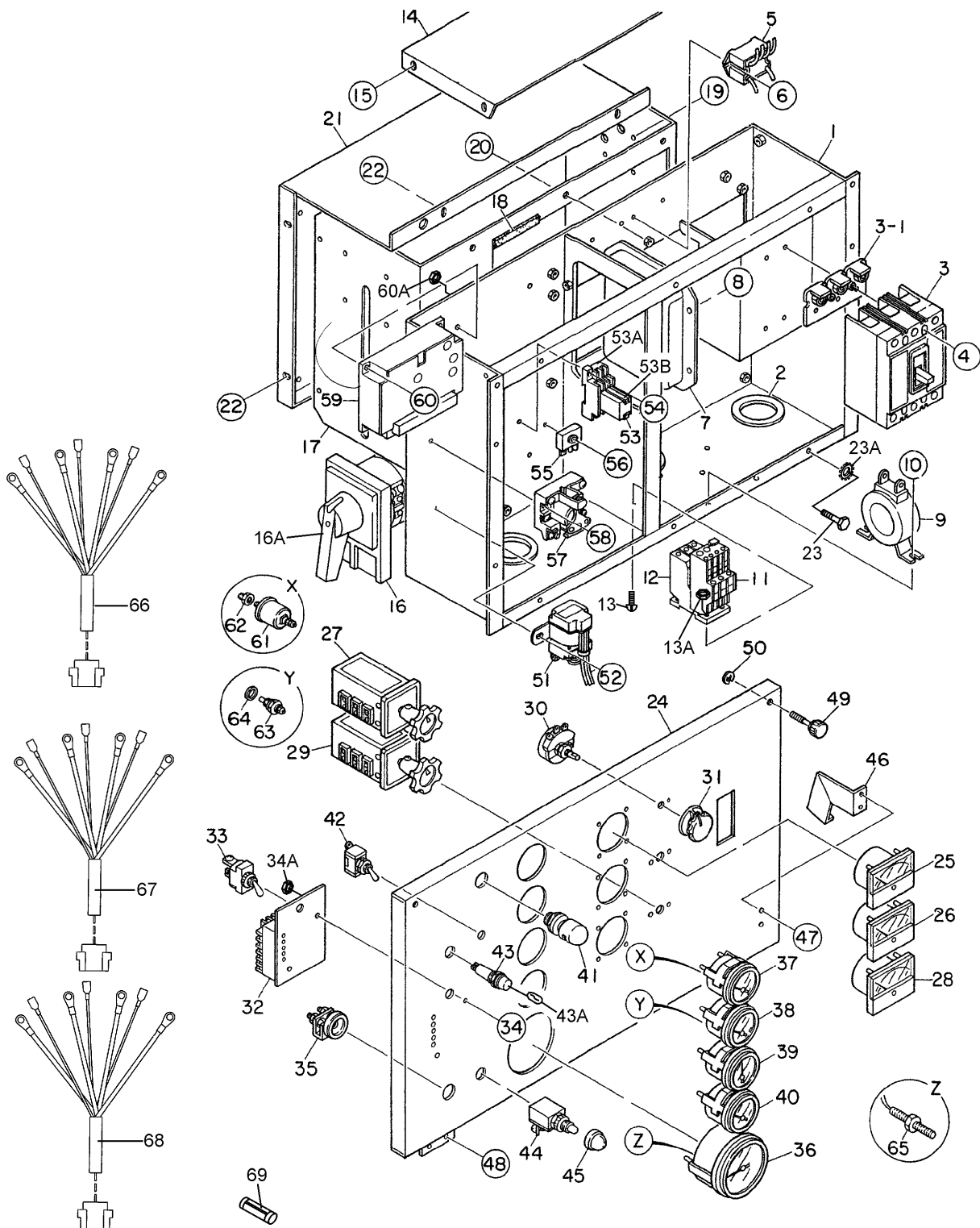
CONTROL BOX ASSY.



CONTROL BOX ASSY.

<u>NO.</u>	<u>PART NO.</u>	<u>PART NAME</u>	<u>QTY.</u>	<u>REMARKS</u>
1	M2213001102	CONTROL BOX	1	
2	0330000180	EDGING	3	
3	0601870432	CIRCUIT BREAKER, 175 A	1	
3-1	0601870490	COVER, CIRCUIT BREAKER	2	
4	0021004040	MACHINE SCREW	4	
5	0601823863	RELAY UNIT	2	
6	0027104016	MACHINE SCREW	4	
7	0601820671	AUTOMATIC VOLTAGE REGULATOR	1	
8	0027105016	MACHINE SCREW	4	
9	0601806139	CURRENT TRANSFORMER, 150/5A	3	
10	0027106016	MACHINE SCREW	6	
11	0601820847	OVER CURRENT RELAY	1	
12	0601820848	OVER CURRENT RELAY	1	
13	0027104016	MACHINE SCREW	2	
13A	0207004000	HEX NUT	2	
14	M2213500203	CONTROL BOX COVER	1	
15	0016906016	HEX HEAD BOLT	4	
16	M2270100004	SELECTOR SWITCH	1	
16A	M1201000004	KNOB, SELECTOR SWITCH		
17	M2213600803	SWITCH BRACKET	1	
18	0330000320	EDGING	2	
19	0027104010	MACHINE SCREW	4	
20	0016906016	HEX HEAD BOLT	6	
21	M2213600904	SWITCH COVER	1	
22	0016906016	HEX HEAD BOLT	4	
23	0015906016	HEX HEAD BOLT	8	
23A	0040506000	TOOTHED WASHER	1	
24	M2223000703	CONTROL PANEL	1	
25	0601807641	FREQUENCY METER, 45~65Hz 240V	1	
26	0601808987	AC AMMETER, 0~150A/300A:5A	1	
27	0601801040	CHANGE-OVER SWITCH, AMMETER	1	
28	0601806859	AC VOLTMETER, 0~600V	1	
29	0601801041	CHANGE-OVER SWITCH, VOLTMETER	1	
30	0601840073	RHEOSTAT (VOLTAGE REGULATOR)	12W 1k OHM
31	0601840121	KNOB	1	
32	0602202545	CONTROLLER, ECU-9988N	1	
33	0601831340	SWITCH	1	
34	0027104040	MACHINE SCREW	2	
34A	0207004000	HEX NUT	2	
35	8941739480	CONTROL RESISTANCE	1REPLACES P/N 0602202506
36	0602120095	TACHOMETER	1	

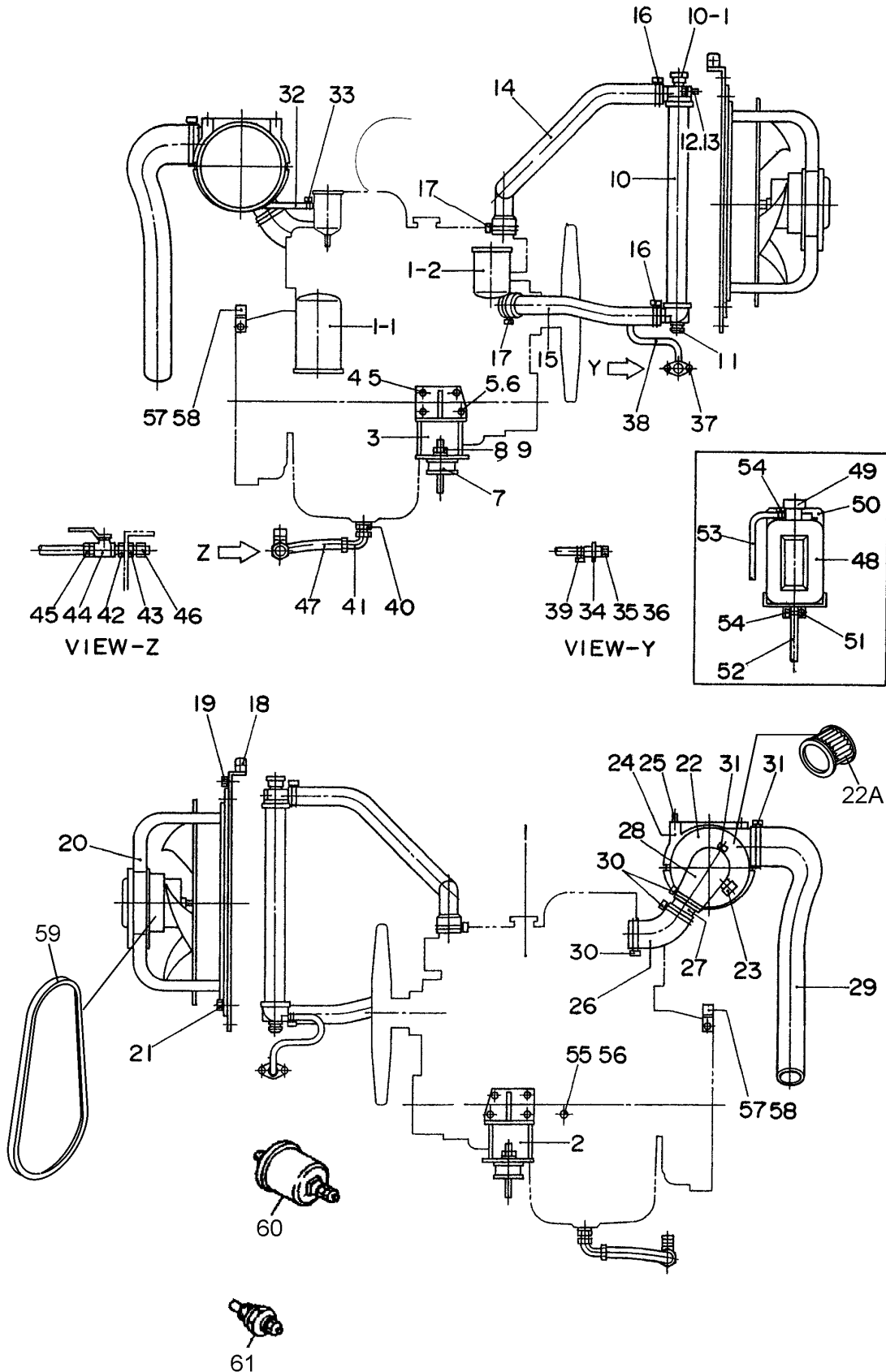
CONTROL BOX ASSY. (CONT.)



CONTROL BOX ASSY. (CONT.)

<u>NO.</u>	<u>PART NO.</u>	<u>PART NAME</u>	<u>QTY.</u>	<u>REMARKS</u>
37	0602122093	OIL PRESSURE GAUGE	1	
38	0602123090	WATER TEMPERATURE GAUGE	1	
39	0602121080	CHARGING AMMETER	1	
40	0602125090	FUEL GAUGE	1	
41	0601810141	PANEL LIGHT	1	
42	0601831330	SWITCH, PANEL LIGHT	1	
43	0602103092	ALARM LAMP	1	
43A	0601810245	BULB, DC18V	1	
44	0601831585	PREHEAT BUTTON	1	
45	0601831586	CAP	1	
46	M1224100104	STOPPER	1	
47	0027105010	MACHINE SCREW	2	
48	0027105010	MACHINE SCREW	4	
49	M9220100004	SET SCREW	2	
50	0080200007	SNAP RING	2	
51	1825530401	STARTER RELAY	1	REPLACES P/N 0602200304
52	0016906016	MACHINE SCREW	2	
53	LY2DDC12V	RELAY	1	
53A	PTF08AE	BASE	1	
53B	PYCA1	CAP	2	
54	0027104020	MACHINE SCREW	2	
55	0601823240	RECTIFIER, DE45	1	
56	0027104020	MACHINE SCREW	1	
57	0601827680	STARTER RELAY	1	
58	0027104020	MACHINE SCREW	2	
59	0602202546	CONTROLLER (EGS) DYN1	1	
60	0027105016	MACHINE SCREW	4	
60A	0207005000	HEX NUT	4	
61	0602122272	UNIT, OIL PRESSURE	1	
62	M9200100004	ADAPTER	1	
63	8971256000	SENDER, WATER SWITCH	1	
64	9095720140	PACKING	1	REPLACES P/N 0602121109
65	0602120480	PICK UP, TACHOMETER	1	
66	M2246701504	WIRE HARNESS, GENERATOR	1	
67	M2357201102	WIRE HARNESS, ENGINE	1	
68	M3357200304	WIRE HARNESS, FUEL LEAK	1	
69	0601802149	FUSE, 10A	3	

ENGINE AND RADIATOR ASSY.



ENGINE AND RADIATOR ASSY.

<u>NO.</u>	<u>PART NO.</u>	<u>PART NAME</u>	<u>QTY.</u>	<u>REMARKS</u>
1	M2923200024	ENGINE, ISUZU FF-4BG1T	1	
1-1	1132402311	CARTRIDGE, OIL FILTER.....	1	REPLACES P/N 0602041216
1-2	1132400791	CARTRIDGE, FUEL FILTER.....	1	REPLACES P/N 0602042407
2	M1303200103	ENGINE FOOT	1	
3	M1303200203	ENGINE FOOT	1	
4	0010710025	HEX HEAD BOLT	7	
5	0042510000	SPRING WASHER	8	
6	0030410000	HEX, NUT	1	
7	0605000009	RUBBER SUSPENSION	2	
8	0030012000	HEX, NUT	2	
9	0040012000	SPRING WASHER	2	
10	M2923200044	RADIATOR	1	
10-1	0602011053	CAP, RADIATOR	1	
11	M9312200104	MOUNT RUBBER	2	
12	0016908040	HEX, HEAD BOLT	2	
13	0207008000	HEX, NUT	2	
14	M2310500803	RADIATOR HOSE	1	
15	M2310500903	RADIATOR HOSE	1	
16	0605515147	HOSE BAND	2	
17	0605515199	HOSE BAND	2	
18	M2313300404	FAN BRACKET	1	
19	0017110030	HEX, HEAD BOLT	4	
20	0601822798	FAN MOTOR	1	
21	0017110030	HEX, HEAD BOLT	4	
22	0602046582	AIR CLEANER	1	
22A	0602046365	ELEMENT, AIR CLEANER	1	
23	0602040651	INDICATOR, AIR CLEANER	1	
24	0602040554	BAND, AIR CLEANER	1	
25	0016908030	HEX, HEAD BOLT	2	
26	M2373100404	HOSE, AIR CLEANER	1	
27	M2326100004	BLOWBY PIPE	1	
28	M2373100304	HOSE, AIR CLEANER	1	
29	M1374100103	HOSE, AIR CLEANER	1	
30	0605515146	HOSE BAND	3	
31	0605515197	HOSE BAND	2	
32	0191300450	BLOWBY HOSE	1	
33	0605515198	HOSE BAND	2	
34	M2320300103	DRAIN JOINT	1	
35	M9200200004	PLUG	1	

ENGINE AND RADIATOR ASSY. (CONT.)

<u>NO.</u>	<u>PART NO.</u>	<u>PART NAME</u>	<u>QTY.</u>	<u>REMARKS</u>
36	0150000018	O RING	1	
37	0016906020	HEX, HEAD BOLT	2	
38	0199900600	DRAIN HOSE	1	
39	0605515106	HOSE BAND	1	
40	0602022560	ADAPTER	1	
41	0602022561	90 DEG. ELBOW	1	
42	0602206590	CONNECTOR	1	
43	0603300285	ROCKNUT	1	
44	0605511395	VALVE	1	
45	0603306395	HOSE JOINT	1	
46	0602021070	CAP	1	
47	0269200420	DRAIN HOSE	1	
48	M9300000203	RESERVE TANK	1	
49	0602010900	CAP, RESERVE TANK	1	
50	M3316100303	BRACKET, RESERVE TANK	1	
51	0016908020	HEX, HEAD BOLT	3	
52	0199102000	HOSE	1	
53	0193600700	HOSE	1	
54	0605515106	HOSE BAND	3	
55	0017112025	HEX, HEAD BOLT	1	
56	0040512000	TOOTHED WASHER	1	
57	0602220911	CLAMP	2	
58	0017110020	HEX, HEAD BOLT	2	
59	8972333820	FAN BELT	1	REPLACES P/N 0602011434
60	0602123260	UNIT, WATER TEMPERATURE	1	
61	9827200690	SENDER, OIL SWITCH	1	

OUTPUT TERMINAL ASSY.

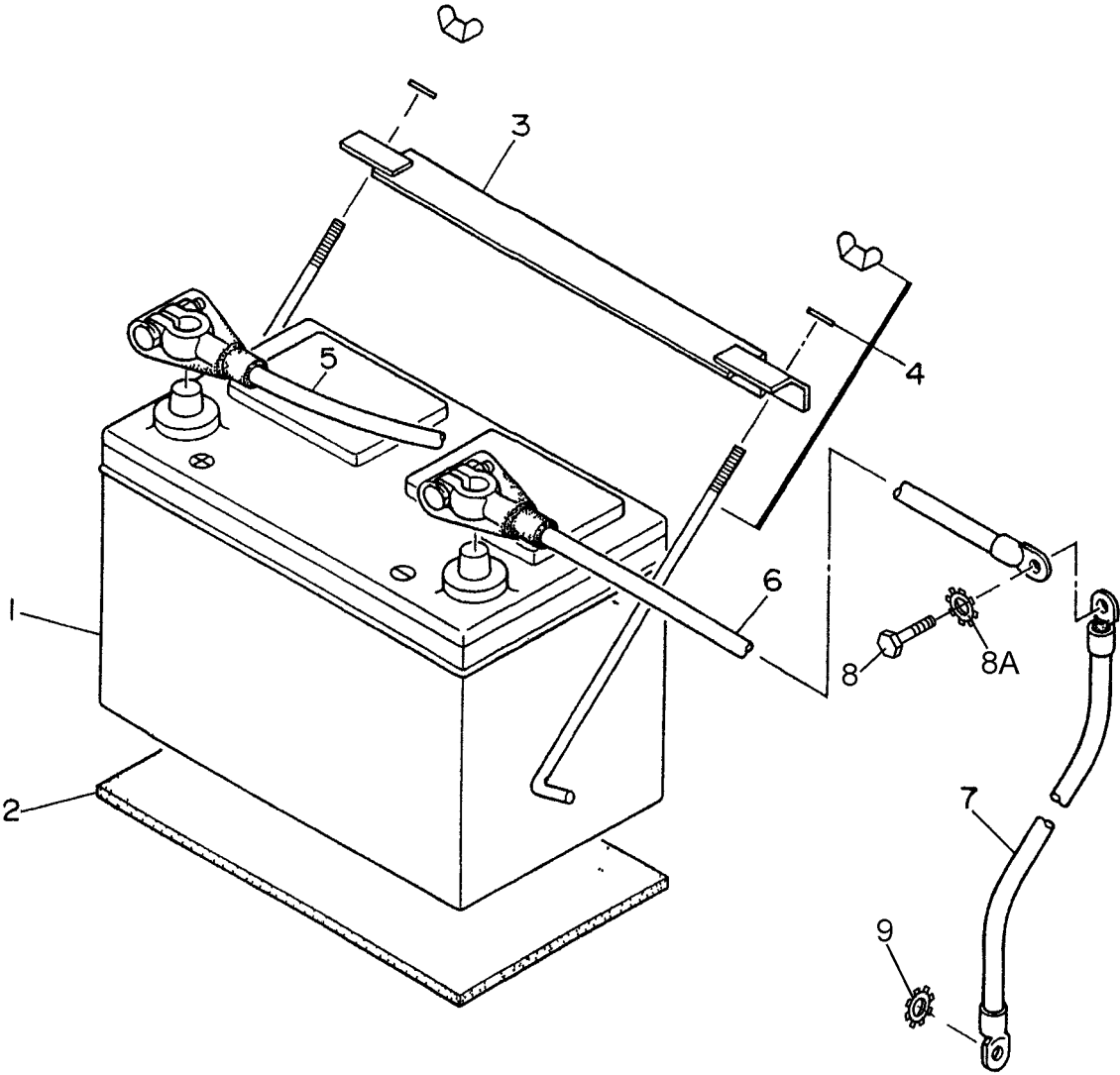
<u>NO.</u>	<u>PART NO.</u>	<u>PART NAME</u>	<u>QTY.</u>	<u>REMARKS</u>
1	M2230700113	TERMINAL PANEL	1	
2	M2233000004	OUTPUT TERMINAL BOLT	5	
3	M2233100004	TIE BOLT	5	
4	0039312000	HEX, NUT	10	
5	0040012000	SPRING WASHER	15	
6	0041412000	PLAIN WASHER	20	
7	0016908035	HEX, HEAD BOLT	5	
8	M3236100503	TERMINAL COVER	1	
9	M3236100404	OUTPUT WINDOW	1	
10	0605010040	HINGE	2	
11	0027103010	MACHINE SCREW	4	
11A	0030003000	HEX, NUT	4	
11B	0041203000	PLAIN WASHER	4	
12	0027103010	MACHINE SCREW	4	
12A	0030003000	HEX, NUT	4	
13	0016906020	HEX, HEAD BOLT	2	
14	0016906016	HEX, HEAD BOLT	4	
15	M3236400004	CABLE OUTLET COVER	1	
16	M3236300004	SUPPORTER, CABLE OUTLET COVER	1	
17	0016906020	HEX, HEAD BOLT	6	
18	0601870440	CIRCUIT BREAKER, 1-POLE, 20A	2	
19	0601870441	CIRCUIT BREAKER, 2-POLE 50A	3	
20	M1260700504	BREAKER FITTING COVER	1	
20A	0222100100	CUSHION RUBBER	2	
21	0016906020	HEX, HEAD BOLT	2	
22	0601812598	RECEPTACLE, 125V 20A	2	
23	0601812538	RECEPTACLE, CS6369 250V 50A	3	
24	0027104016	MACHINE SCREW	10	
24A	0207004000	HEX, NUT	10	
25	M2236100603	TERMINAL COVER	1	
26	0010112045	HEX, HEAD BOLT	2	
27	0041212000	PLAIN WASHER	2	
28	M9310200004	STAY RUBBER	2	
29	0030012000	HEX, NUT	2	
30	0603306775	BLIND PLUG	2	
31	0027104016	MACHINE SCREW	4	
32	0601815194	TERMINAL	1	
33	0027104016	MACHINE SCREW	2	

ADD THE FOLLOWING DIGITS AFTER THE PART NUMBER WHEN ORDERING ANY PAINTED PANEL TO INDICATE COLOR OF UNIT:

1-ORANGE	5-BLACK
2-WHITE	6-CATERPILLAR YELLOW
3-SPECTRUM GREY	7-CATO GOLD
4-SUNBELT GREEN	8-RED

THE SERIAL NUMBER MAY BE REQUIRED.

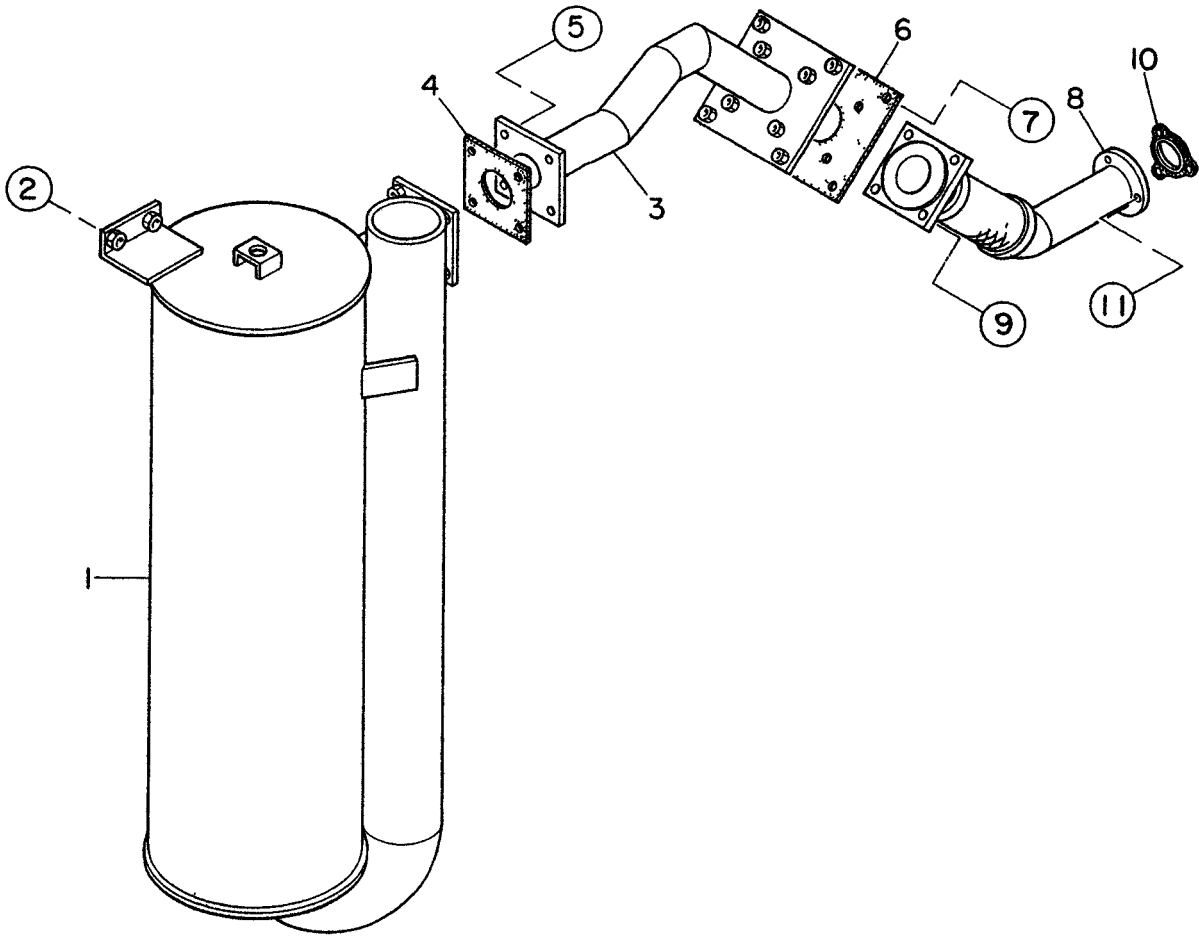
BATTERY ASSY.



BATTERY ASSY.

<u>NO.</u>	<u>PART NO.</u>	<u>PART NAME</u>	<u>QTY.</u>	<u>REMARKS</u>
1	0602220187	BATTERY, 627MFD	1	
2	M9210500014	BATTERY SHEET	1	
3	M9103000304	BATTERY BAND	1	
4	0602220920	BATTERY BOLT SET	2	
5	M2346900404	BATTERY CABLE	1	
6	M2346900104	BATTERY CABLE	1	
7		CABLE	1	MAKE LOCALLY
8	0017112025	HEX HEAD BOLT	1	
8A	0040512000	TOOTHED WASHER	1	
9	0040520000	TOOTHED WASHER	1	

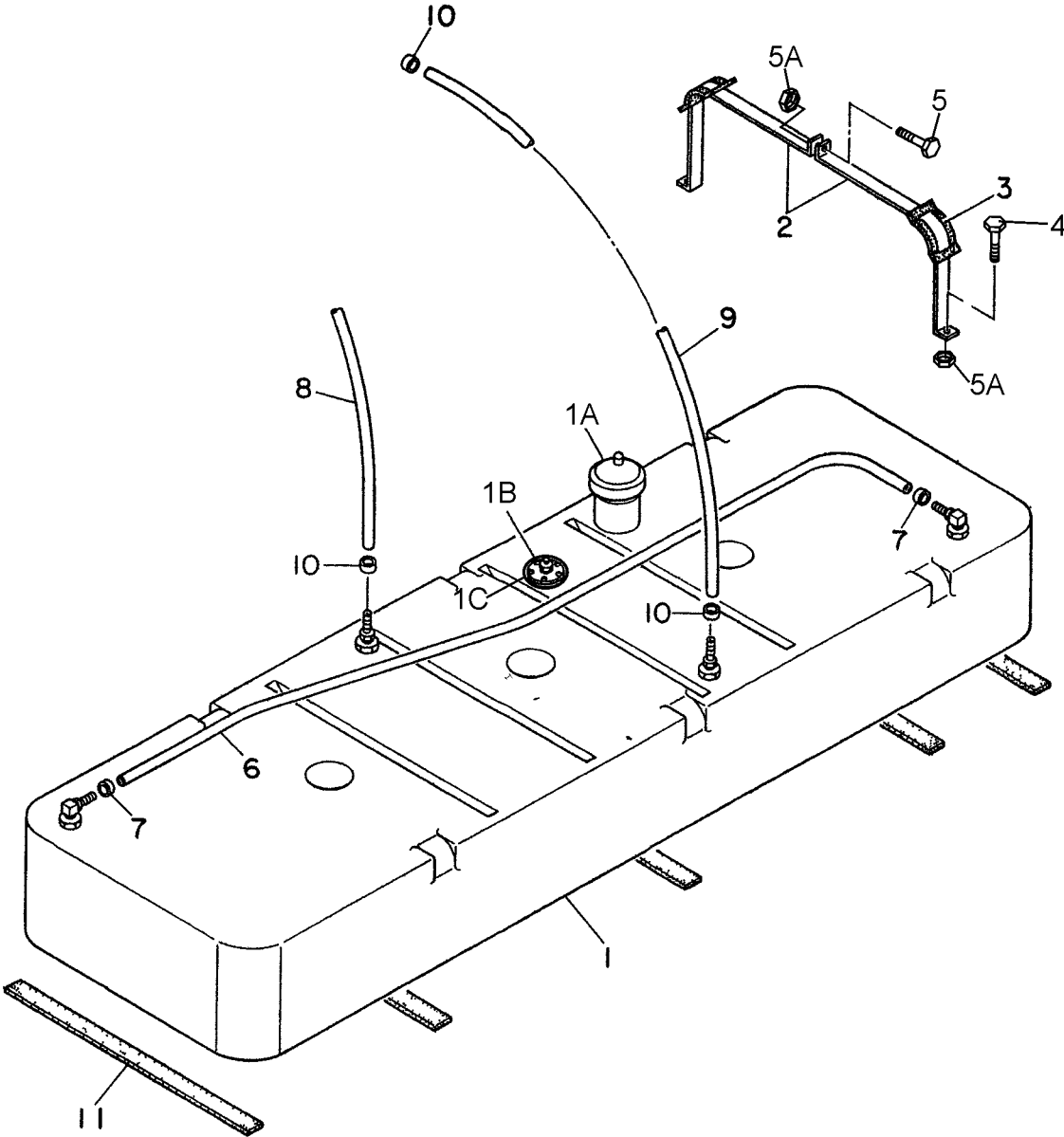
MUFFLER ASSY.



MUFFLER ASSY.

<u>NO.</u>	<u>PART NO.</u>	<u>PART NAME</u>	<u>QTY.</u>	<u>REMARKS</u>
1	M2330101003	MUFFLER	1	
2	0017112030	HEX HEAD BOLT	4	
3	M233000903	EXHAUST PIPE	1	
4	M2333200404	GASKET	1	
5	0017110040	HEX, HEAD BOLT	4	
6	M2333200304	GASKET	1	
7	0017110035	HEX, HEAD BOLT	4	
8	M2333000803	EXHAUST PIPE	1	
9	0017110050	HEX, HEAD BOLT	4	
10	3943690210	GASKET	1	REPLACES P/N 0602320101
11	0039308000	HEX, NUT	6	

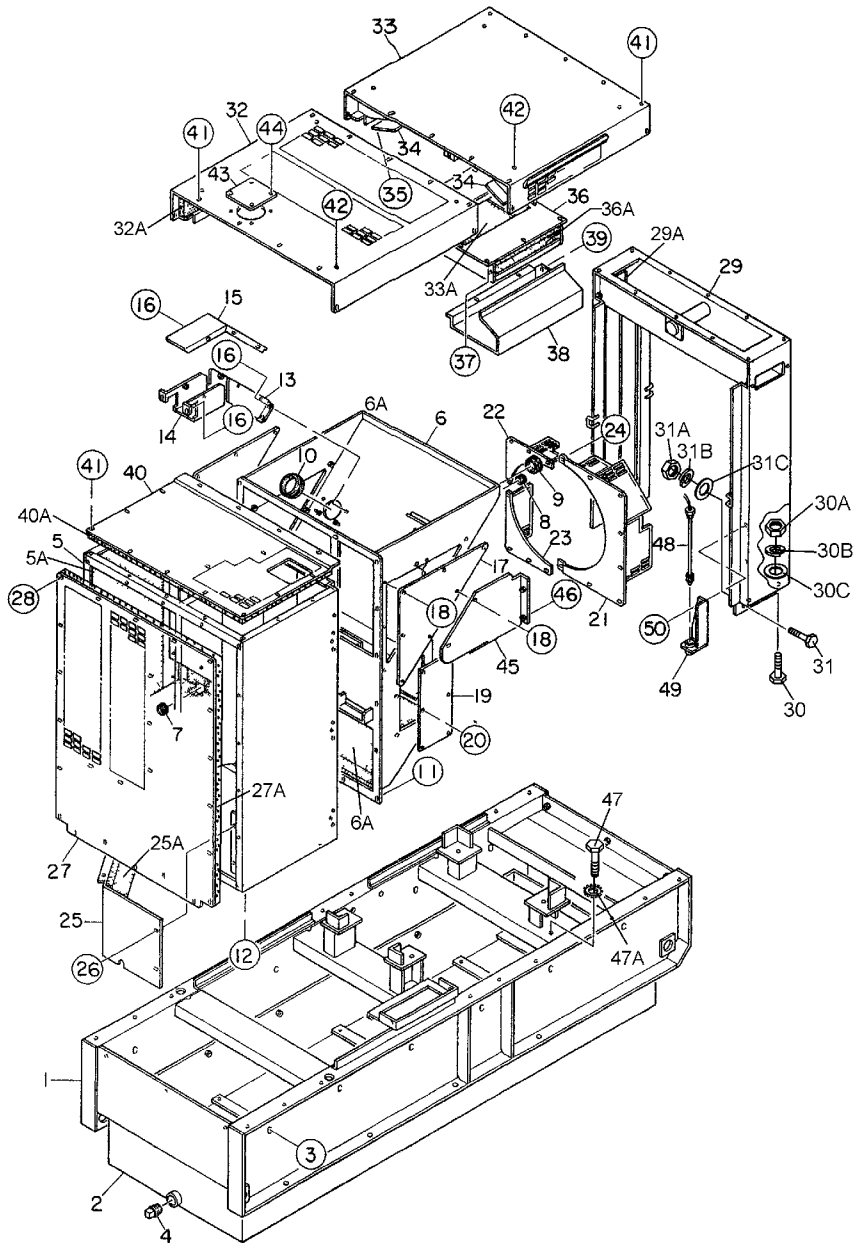
FUEL TANK ASSY.



FUEL TANK ASSY.

<u>NO.</u>	<u>PART NO.</u>	<u>PART NAME</u>	<u>QTY.</u>	<u>REMARKS</u>
1	M2363001202	FUEL TANK	1	
1A	0605505070	FUEL TANK CAP	1	
1B	0605501079	FUEL SENDER UNIT	1	
1C	0605516090	GASKET	1	
2	M2363200704	TANK BAND	6	
3	M9310500104	SUPPORTER SHEET	6	
4	0016908020	HEX, HEAD BOLT	6	
5	0016908055	HEX, HEAD BOLT	3	
5A	0207008000	HEX, NUT	9	
6	0191302200	VENT HOSE	1	
7	0605515109	HOSE BAND	2	
8	0191300900	SUCTION HOSE	1	
9	0191301100	RETURN HOSE	1	
10	0605515109	HOSE BAND	4	
11	0222100710	TANK SHEET	5	

ENCLOSURE 1 ASSY.



ADD THE FOLLOWING DIGITS AFTER THE PART NUMBER WHEN ORDERING ANY PAINTED PANEL TO INDICATE COLOR OF UNIT:

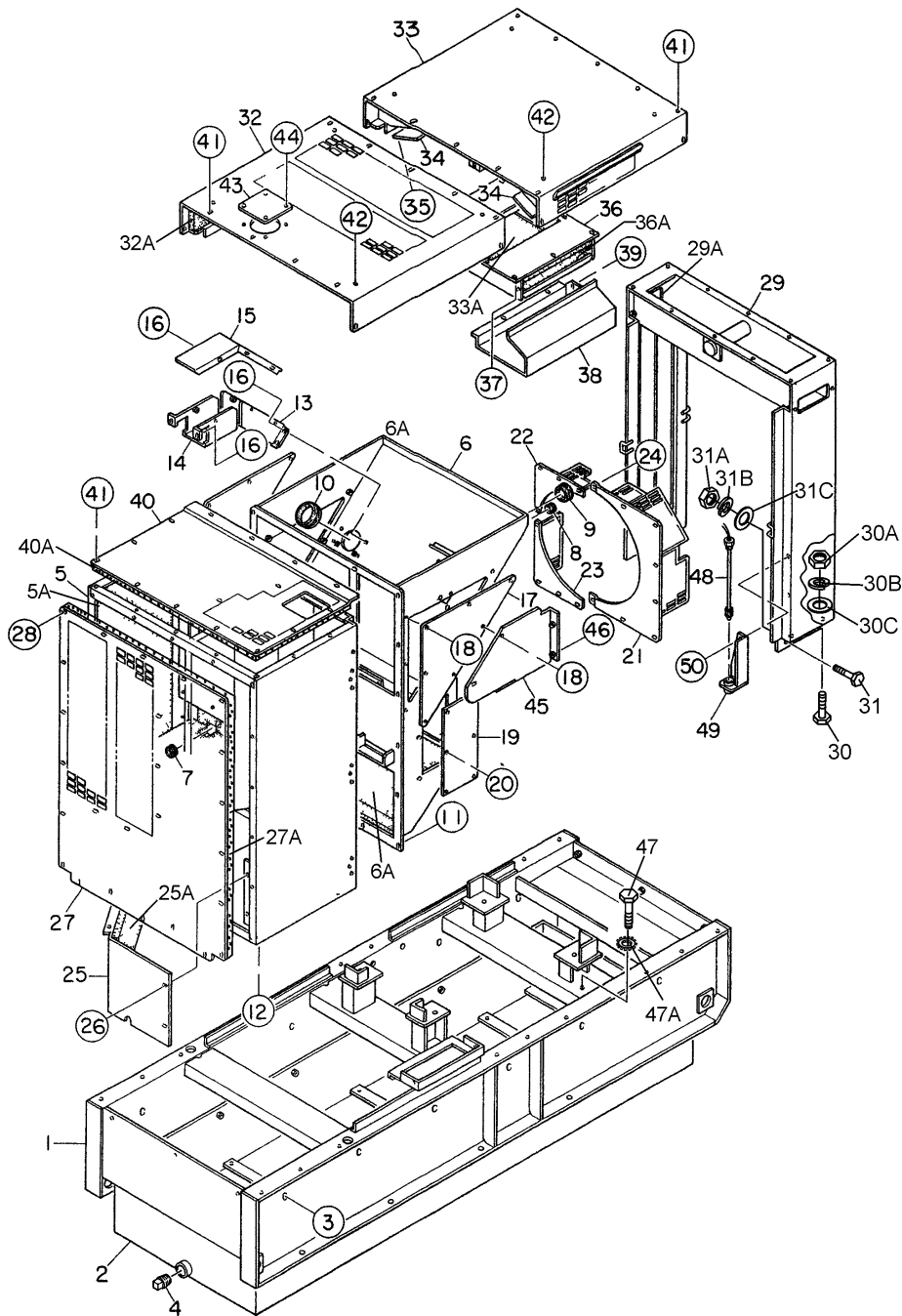
- | | |
|-----------------|----------------------|
| 1-ORANGE | 5-BLACK |
| 2-WHITE | 6-CATERPILLAR YELLOW |
| 3-SPECTRUM GREY | 7-CATO GOLD |
| 4-SUNBELT GREEN | 8-RED |

THE SERIAL NUMBER MAY BE REQUIRED.

ENCLOSURE 1 ASSY.

<u>NO.</u>	<u>PART NO.</u>	<u>PART NAME</u>	<u>QTY.</u>	<u>REMARKS</u>
1	M2413001702	BASE	1	
2	M2363300603	ENVIRONMENTAL TANK	1	
3	0016910030	HEX, HEAD BOLT	12	
4	0603306797	PLUG	1	
5	M2423001302	FRONT FRAME	1	
5A	M2493104603	ACOUSTIC SHEET	1	
6	M2423001402	FRONT FRAME	1	
6A	M2493104603	ACOUSTIC SHEET	1	
7	0601850265	GROMMET	1	
8	0601850263	GROMMET	1	
9	0601851736	GROMMET	1	
10	0601851739	GROMMET	1	
11	0016908020	HEX, HEAD BOLT	20	
12	0016910025	HEX, HEAD BOLT	6	
13	M2310600204	HOSE COVER	1	
14	M2310600304	HOSE COVER	1	
15	M2310600004	HOSE COVER	1	
16	0016906020	HEX, HEAD BOLT	12	
17	M3423200704	DUCT COVER	2	
18	0016906020	HEX, HEAD BOLT	14	
19	M3423200804	DUCT COVER	1	
20	0016906016	HEX, HEAD BOLT	6	
21	M2310300704	FAN SHROUD	1	
22	M2310300804	FAN SHROUD	1	
23	M2310300904	FAN SHROUD	1	
24	0016906020	HEX, HEAD BOLT	14	
25	M2423300204	DISCHARGE GUIDE	1	
25A	M2493104504	ACOUSTIC SHEET	1	
26	0016908020	HEX, HEAD BOLT	6	
27	M243202004	COVER, FRONT FRAME	1	
27A	M2493104304	ACOUSTIC SHEET	1	
28	0019208020	HEX, HEAD BOLT	25	
29	M2433000803	CENTER FRAME	1	
29A	M2493200004	ACOUSTIC SHEET	1	
30	0010114040	HEX, HEAD BOLT	4	
30A	0030014000	HEX, NUT	4	
30B	0040014000	SPRING WASHER	4	
30C	0041214000	PLAIN WASHER	8	

ENCLOSURE #1 ASSY. (CONT.)



ADD THE FOLLOWING DIGITS AFTER THE PART NUMBER WHEN ORDERING ANY PAINTED PANEL TO INDICATE COLOR OF UNIT:

- | | |
|-----------------|----------------------|
| 1-ORANGE | 5-BLACK |
| 2-WHITE | 6-CATERPILLAR YELLOW |
| 3-SPECTRUM GREY | 7-CATO GOLD |
| 4-SUNBELT GREEN | 8-RED |

THE SERIAL NUMBER MAY BE REQUIRED.

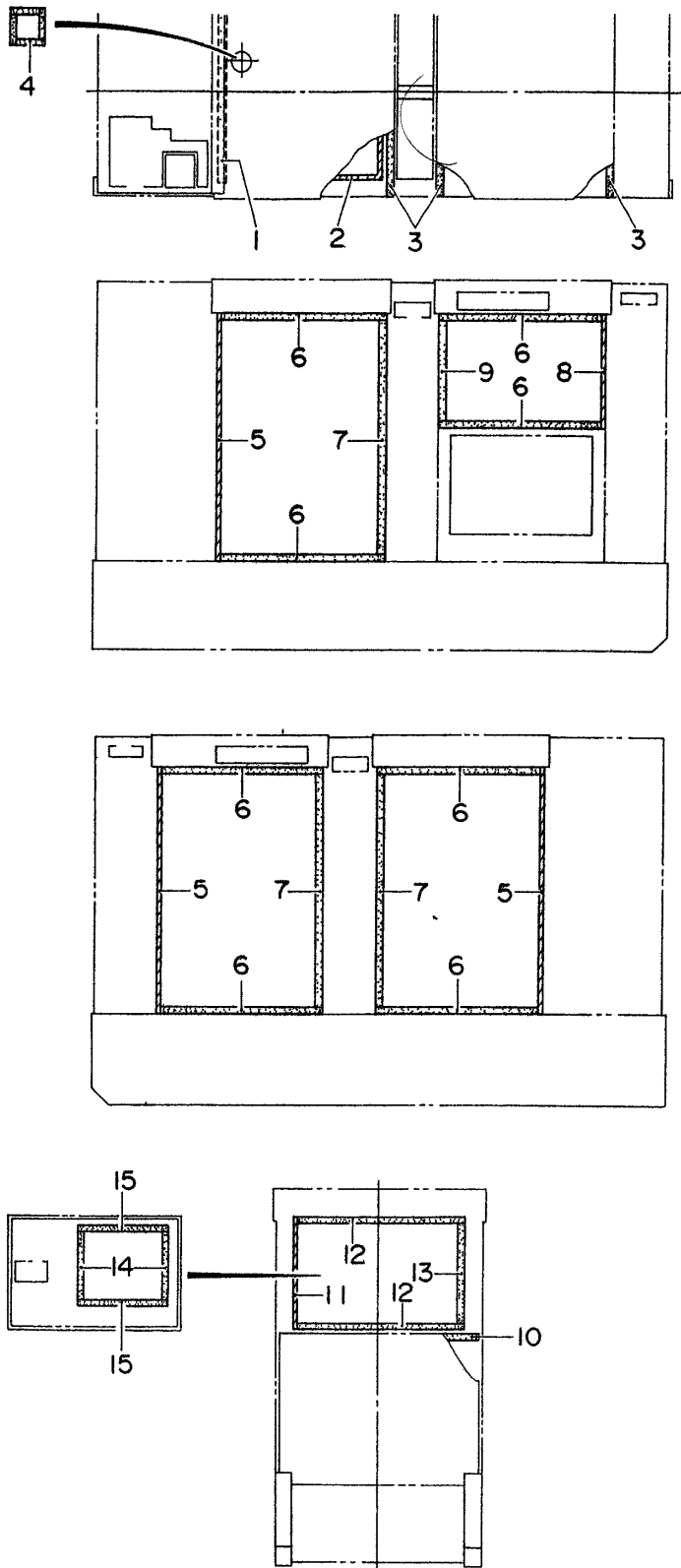
ENCLOSURE #1 ASSY. (CONT.)

<u>NO.</u>	<u>PART NO.</u>	<u>PART NAME</u>	<u>QTY.</u>	<u>REMARKS</u>
31	0010120050	HEX, HEAD BOLT	4	
31A	0030020000	HEX, NUT	4	
31B	0040020000	SPRING WASHER	4	
31C	0041220000	PLAIN WASHER	8	
32	M2463100302	ROOF PANEL	1	
32A	M2493502604	ACOUSTIC SHEET	1	
33	M2463200302	ROOF PANEL	1	
33A	M2493502403	ACOUSTIC SHEET	1	
34	M3463200704	BACK PLATE	2	
35	0016906016	HEX, HEAD BOLT	12	
36	M2463200503	DUCT	1	
36A	M2493502704	ACOUSTIC SHEET	1	
37	0016908020	HEX, HEAD BOLT	10	
38	M2463400103	DUCT COVER	1	
39	0016908020	HEX, HEAD BOLT	6	
40	M2423201504	OVER COVER, FRONT FRAME	1	
40A	M2493104404	ACOUSTIC SHEET	1	
41	0019208020	HEX, HEAD BOLT	42	
42	0019210025	HEX, HEAD BOLT	8	
43	M3310600004	COVER, RADIATOR CAP	1	
44	0019208020	HEX, HEAD BOLT	4	
45	M2483100304	COVER, EXHAUST PIPE	1	
46	0016908020	HEX, HEAD BOLT	2	
47	0016908020	HEX, HEAD BOLT	1	
47A	0040508000	TOOTHED WASHER	1	
48	0605503062	FUEL LEAK DETECTED SWITCH	1	
49	M1414800104	BRACKET	1	
50	0017108020	HEX, HEAD BOLT	2	

ENCLOSURE #2 ASSY.

<u>NO.</u>	<u>PART NO.</u>	<u>PART NAME</u>	<u>QTY.</u>	<u>REMARKS</u>
1	M2443000802	REAR FRAME	1	
1A	M2493303103	ACOUSTIC SHEET	1	
2	M2443000604	DUCT	2	
3	0016908020	HEX, HEAD BOLT	24	
4	0016910025	HEX, HEAD BOLT	4	
5	M2443301103	COVER, REAR FRAME	1	
5A	M2493303004	ACOUSTIC SHEET	1	
6	0019208020	HEX, HEAD BOLT	12	
7	M2443200303	DOOR, REAR FRAME	1	
8	M1444600004	WINDOW PLATE	1	
9	0207006000	HEX, NUT	8	
9A	0041206000	PLAIN WASHER	8	
10	M9113000002	DOOR HANDLE ASSY	1	
11	0021806016	MACHINE SCREW	4	
11A	0030006000	HEX, NUT	4	
12	M9110100204	HINGE	2	
13	M9116100004	WASHER	2	
14	0019208020	HEX, HEAD BOLT	3	
15	M2453201202	SPLASHER PANEL	1	
15A	M2493405204	ACOUSTIC SHEET	1	
16	0019108065	HEX, HEAD BOLT	4	
16A	0042308000	SPRING WASHER	4	
16B	0042408000	PLAIN WASHER	4	
17	0016910025	HEX, HEAD BOLT	2	
18	M2453001703	SIDE DOOR	1	
18A	M2493404704	ACOUSTIC SHEET	1	
19	M2453001803	SIDE DOOR	1	
19A	M2493405104	ACOUSTIC SHEET	1	
20	M2453001903	SIDE DOOR	1	
20A	M2493405304	ACOUSTIC SHEET	1	
21	M2453001703	SIDE DOOR	1	
21A	M2493404704	ACOUSTIC SHEET	1	
22	M9113000002	DOOR HANDLE ASSY	4	
22A	C9312500004	SEAL RUBBER	4	
23	0021806016	MACHINE SCREW	16	
23A	0030006000	HEX, NUT	16	
24	M9110100804	HINGE	6	
25	M9110100904	HINGE	5	
26	M9116100004	WASHER	11	
27	0019208020	HEX, HEAD BOLT	26	
28	0601850097	STOPPER	8	
29	0027208025	MACHINE SCREW	8	
30	M9310000004	CAP	13	

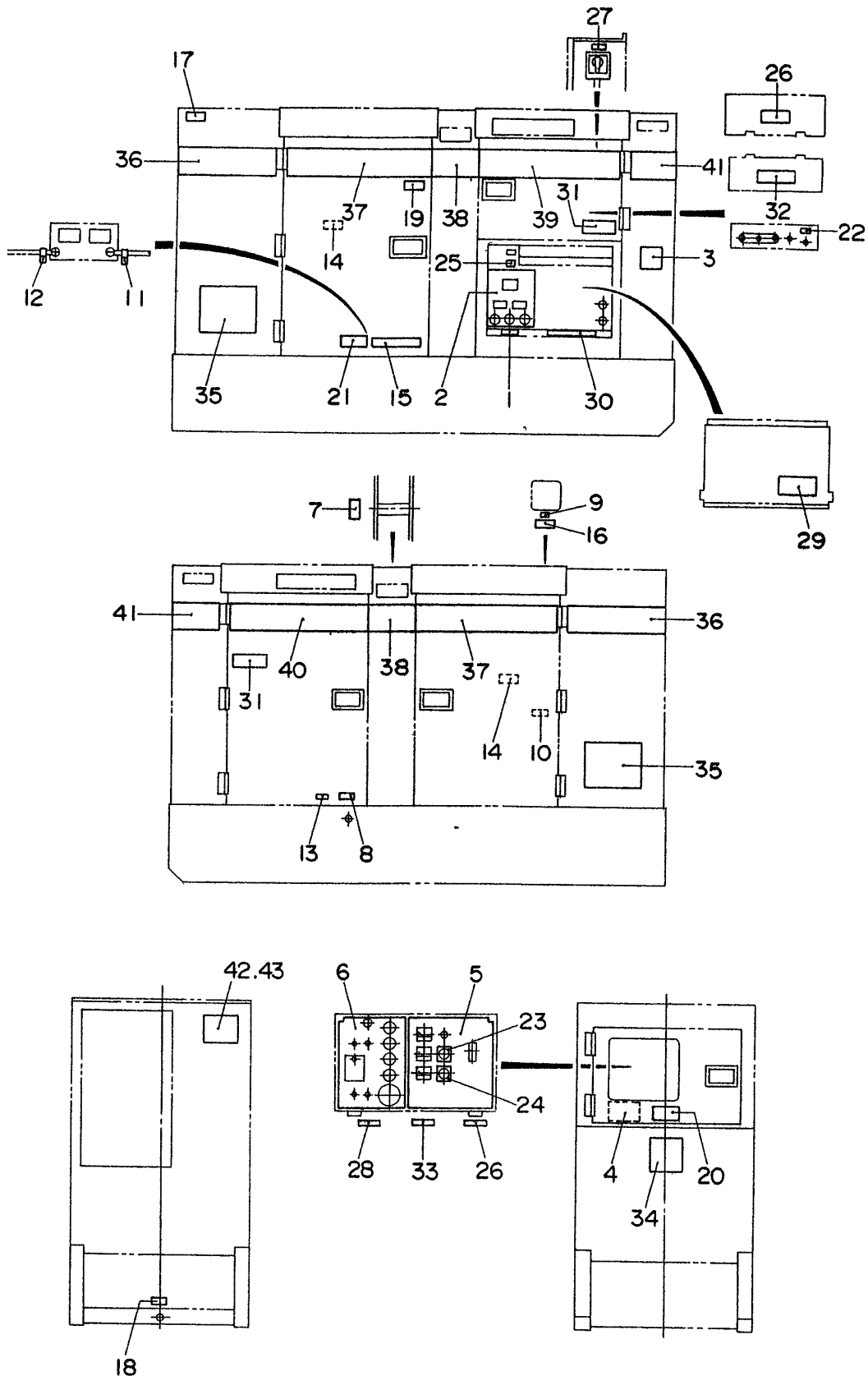
RUBBER SEALS ASSY.



RUBBER SEALS ASSY.

<u>NO.</u>	<u>PART NO.</u>	<u>PART NAME</u>	<u>QTY.</u>	<u>REMARKS</u>
1	0229200840	RUBBER SEAL	1	
2	0314502250	RUBBER SEAL	1	
3	0229200950	RUBBER SEAL	3	
4	0229200125	RUBBER SEAL	4	
5	0228901165	RUBBER SEAL	3	
6	0228900770	RUBBER SEAL	8	
7	0228901105	RUBBER SEAL	3	
8	0228900535	RUBBER SEAL	1	
9	0228900475	RUBBER SEAL	1	
10	0229200910	RUBBER SEAL	1	
11	0228800525	RUBBER SEAL	1	
12	0228800790	RUBBER SEAL	2	
13	0228800475	RUBBER SEAL	1	
14	0228100325	RUBBER SEAL	2	
15	0228100420	RUBBER SEAL	2	

NAMEPLATE AND DECALS ASSY.



NAMEPLATE AND DECALS ASSY.

<u>NO.</u>	<u>PART NO.</u>	<u>PART NAME</u>	<u>QTY.</u>	<u>REMARKS</u>
1	M1550000204	DECAL; NOTE.....	1.....	M15000020
2	M1550002203	DECAL; AUXILIARY OUTPUT.....	1.....	M15000220
3	M2550000304	DECAL; NOTE.....	1.....	M25000030
4	M2550000703	DECAL; OPERATING PROCEDURES.....	1.....	M25000070
5	M2550000803	DECAL; GENERATOR CONTROL.....	1.....	M25000080
6	M2550000903	DECAL; ENGINE OPERATING.....	1.....	M25000090
7	M3550002204	DECAL; CAUTION.....	1.....	M35000220
8	M9500000004	DECAL; OIL DRAIN PLUG.....	1.....	M90000000
9	M9500100004	DECAL; WATER.....	1.....	M90010000
10	M9500100104	DECAL; WATER DRAIN.....	1.....	M90010010
11	M9500300004	DECAL; -.....	1.....	M90030000
12	M9500300104	DECAL; +.....	1.....	M90030010
13	M9500500004	DECAL; DIESEL FUEL.....	1.....	M90050000
14	M9503000004	DECAL; WARNING MOVING PARTS.....	2.....	M90300000
15	M9503000103	DECAL; WATER-OIL CHECK.....	1.....	M90300010
16	M9503100004	DECAL; WARNING HOT COOLANT.....	1.....	M90310000
17	M9503200004	DECAL; WARNING ENGINE EXHAUST.....	1.....	M90320000
18	M9510000004	DECAL; FLUID DRAIN.....	1.....	M91000000
19	M9510100004	DECAL; CAUTION HOT PARTS.....	1.....	M91010000
20	M9510100304	DECAL; ENVIRONMENTAL WARNING.....	1.....	M91010030
21	M9510100403	DECAL; CAUTION.....	1.....	M91010040
22	M9520000004	DECAL; GROUND.....	1.....	M92000000
23	M9520000104	DECAL; AMMETER CHANGE-OVER SW.....	1.....	M92000010
24	M9520000204	DECAL; VOLTMETER CHANGE-OVER SW.....	1.....	M92000020
25	M9520000504	DECAL; START CONTACT.....	1.....	M92000050
26	M9520100004	DECAL; WARNING ELECT, SHOCK HAZ.....	1.....	M92010000
27	M9520100204	DECAL; CAUTION.....	1.....	M92010020A
28	M9520100304	DECAL; SAFETY INSTRUCTIONS.....	1.....	M92010030
29	M9520100404	DECAL; DANGER HIGH VOLTAGE.....	1.....	M92010040
30	M9520100503	DECAL; WARNING.....	1.....	M92010050
31	M9520100603	DECAL; CAUTION.....	2.....	M92010060
32	M9520200003	DECAL; CONNECTION OF OUTPUT CABLE.....	1.....	M92020000
33	M9520200404	DECAL; OVER-CURRENT RELAY.....	1.....	M92020040
34	M9512200004	DECAL; MQ.....	1.....	M91220000
35	M9510200304	DECAL; MQ POWER	2	
36	M2560101104	STRIPE	2	
37	M2560100603	STRIPE; WHISPERWATT	2	
38	M3560102204	STRIPE	2	
39	M2560101303	STRIPE; 70	1	
40	M2561002504	STRIPE; 70	1	
41	M3560102504	STRIPE	2	
42	0600500092	PLATE; MQ POWER	1	
43	0021106016	MACHINE SCREW	4	

PARTS MANUAL

HERE'S HOW TO GET HELP

PLEASE HAVE THE MODEL AND SERIAL
NUMBER ON HAND WHEN CALLING

UNITED STATES

Multiquip Inc.

(310) 537- 3700
6141 Katella Avenue Suite 200
Cypress, CA 90630
E-MAIL: mq@multiquip.com
WEBSITE: www.multiquip.com

CANADA

Multiquip

(450) 625-2244
4110 Industriel Boul.
Laval, Quebec, Canada H7L 6V3
E-MAIL: infocanada@multiquip.com

UNITED KINGDOM

Multiquip (UK) Limited Head Office

0161 339 2223
Unit 2, Northpoint Industrial Estate, Globe Lane,
Dukinfield, Cheshire SK16 4UJ
E-MAIL: sales@multiquip.co.uk

© COPYRIGHT 2024, MULTIQUIP INC.

Multiquip Inc, the MQ logo and the MQ Power logo are registered trademarks of Multiquip Inc. and may not be used, reproduced, or altered without written permission. All other trademarks are the property of their respective owners and used with permission.

This manual MUST accompany the equipment at all times. This manual is considered a permanent part of the equipment and should remain with the unit if resold.

The information and specifications included in this publication were in effect at the time of approval for printing. Illustrations, descriptions, references and technical data contained in this manual are for guidance only and may not be considered as binding. Multiquip Inc. reserves the right to discontinue or change specifications, design or the information published in this publication at any time without notice and without incurring any obligations.

Manufactured for
MQ Power Inc.
by
DENYO MANUFACTURING CORP.

