



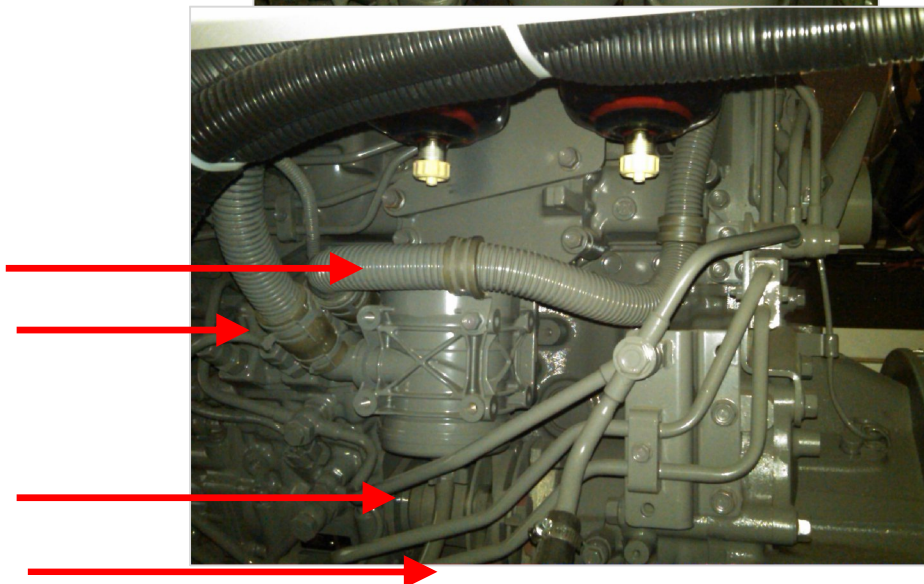
ENGINE CRANKCASE FREEZING PREVENTIVE WRAP

Crankcase freezing climates below 32°F can cause sealing failures in the block assembly due to excessive pressures in the crankcase.

Adding insulation to breather filter housing and lines will help prevent freezing in cold weather conditions

SUPPLIES NEEDED:

- Suitable foam insulation for crankcase hoses.
(Recommended product: Armacell Self Seal Pipe Insulation, sourced at home improvement stores)
- Insulation Tape to cover exposed areas.
(Recommended product: AP/Armaflex 1/8" thick x 2" wide, sourced at home improvement stores)
- For DCA models equipped with Isuzu engines there is a filter cover available that fits engine models 6HK1 – 6UZ1X – 6WGX1 - MQ part number: **0600800350**
- Razor Knife
- Tape Measure

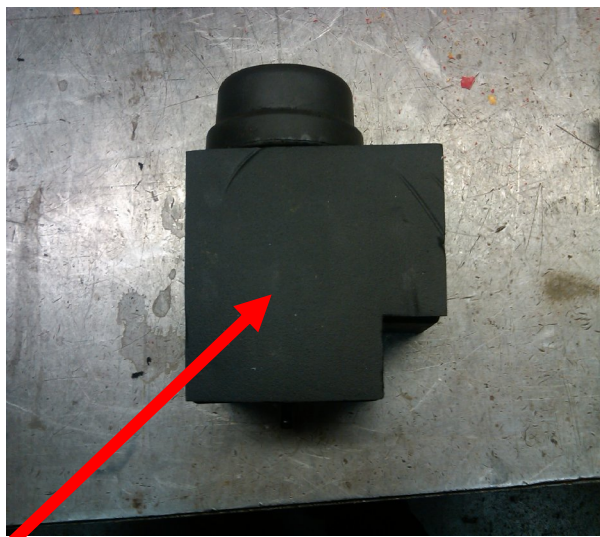
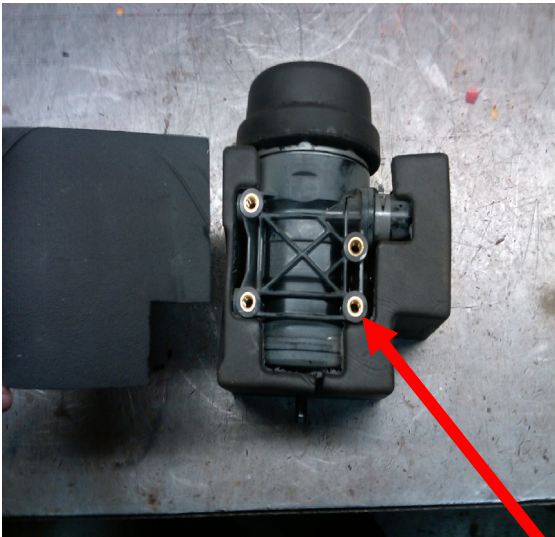




Technical Information

ISUZU BREATHER FILTER INSULATION PHOTOS

Below is in reference to the ISUZU engine only – Using MQ part number: **0600800350**



IMPORTANT: Add holes in the foam for mounting

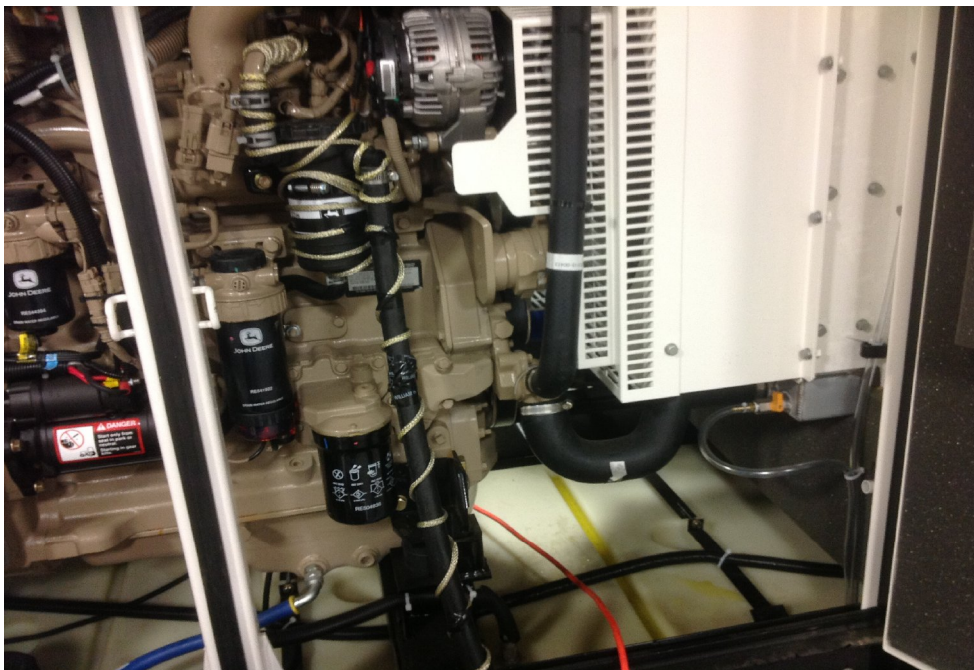


BREATHER LINES INSULATION PHOTOS

After Installation of the filter housing (If equipped) measure the breather lines and cut to fit the insulation tubing to correct size. Shown below is 1" I.D. Armacell tubing for reference and 1/8" x 2" x 30" tape to cover the seams and all exposed areas.



Shown below is the path of heat trace wrapped around canister and lines.
(can be sourced at local home improvement store)





Reference photos of completed installation

