



The information and specifications included in this publication were in effect at the time of approval for printing. Illustrations, descriptions, references and technical data contained in this document are for guidance only and may not be considered as binding. MultiQuip Inc. reserves the right to discontinue or change specifications, design or the information published in this publication at any time without notice and without incurring any obligations.

### MODEL NUMBERS NOMENCLATURE

- \* The DCA generator comes in two different models: the SUPER SILENT (SS) and ULTRA SILENT (US).
- \* When looking for the correct manual or electrical schematic you will need the full **MODEL NUMBER**.

#### MODEL NUMBER EXPLAINED:

**DCA 300 SS J U 4 F 2**

DCA = Diesel Coupling Alternator

300 = The kVA rated output

SS = Super Silent (or US = Ultra Silent) SPX=Single Phase only

J = Engine Manufacturer

- C = Cummins
- I = Isuzu
- J = John Deere
- K = Kubota or Komatsu
- V = Volvo

U = Unit assembled in USA (without U = assembled in Japan)

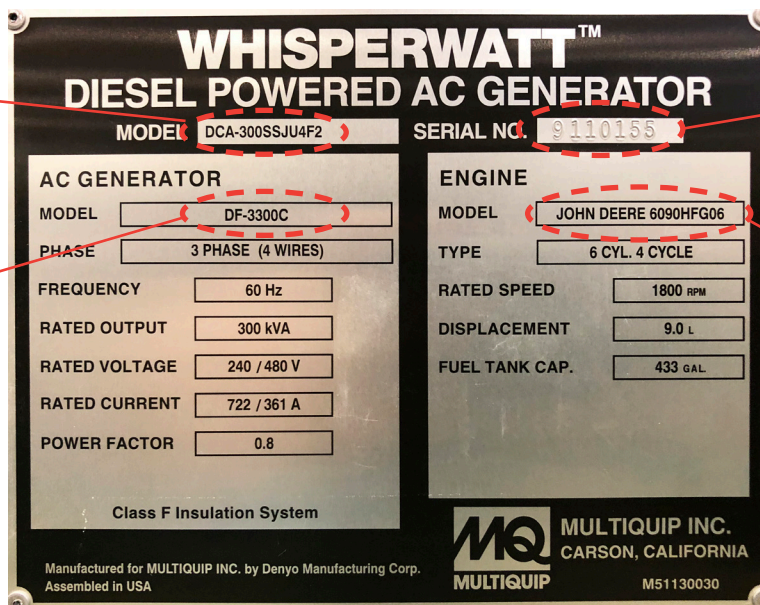
4 = Engine emission tier

2 = Rev in series (C = White Paint, CAN = Canadian Model F = Final (or I = Interim)

© COPYRIGHT 2019, MULTQUIP INC. Rev. 0 (02272019)

MODEL NUMBER

GEN-END MODEL NUMBER



SERIAL NUMBER

ENGINE MODEL NUMBER