

The information and specifications included in this publication were in effect at the time of approval for printing. Illustrations, descriptions, references and technical data contained in this document are for guidance only and may not be considered as binding. Multiquip Inc. reserves the right to discontinue or change specifications, design or the information published in this publication at any time without notice and without incurring any obligations.

AIR/OIL SEPARATOR DRAIN HOSE FILTER CHANGE

The air/oil separator filter “separates” oil mist from the air system. This oil is collected at the bottom of the separator filter and minimum pressure valve. A drain hose, or scavenge oil hose, connects this separated oil back to the main air end. A vacuum in the hose draws the collected oil down to the air end.

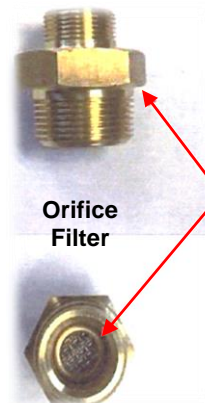
The drain hose uses a serviceable filter screen to prevent contaminants from plugging the small orifice in the return hose to the air end.

Multiquip has made a production change to the filter screen to improve its service life and overall serviceability. The new screen can be installed on earlier units if the original filter service increments are found to be too frequent.

Production change took place effective starting with serial #9500227. The orifice filter part #0603310087 was changed to a serviceable type filter part #W6143216004.



ORIFICE FILTER UNITS PRIOR S/N 9500227





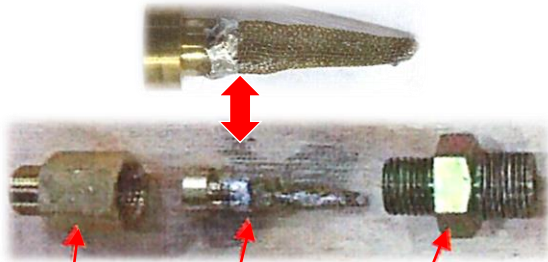
The information and specifications included in this publication were in effect at the time of approval for printing. Illustrations, descriptions, references and technical data contained in this document are for guidance only and may not be considered as binding. Multiquip Inc. reserves the right to discontinue or change specifications, design or the information published in this publication at any time without notice and without incurring any obligations.

AIR/OIL SEPARATOR DRAIN HOSE FILTER CHANGE

SERVICEABLE FILTER

UNITS FROM S/N 9500227

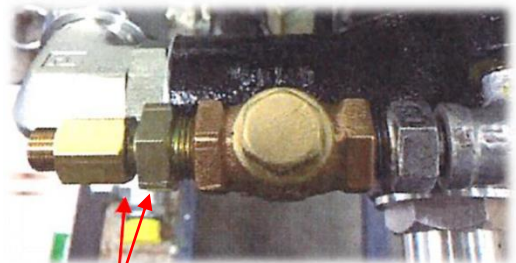
INTERCHANGEABLE WITH ALL DIS185SSI4F



**New Nipple
(With Orifice)**
Part #
W6013217004

**New Filter
Serviceable**
Part #
W6143216004

New Nipple
Part #
W6013215004



**Assembled Group
of Components**

© COPYRIGHT 2019, MULTIQUIP INC. Rev. 0 (09182019)