

The information and specifications included in this publication were in effect at the time of approval for printing. Illustrations, descriptions, references and technical data contained in this document are for guidance only and may not be considered as binding. MultiQuip Inc. reserves the right to discontinue or change specifications, design or the information published in this publication at any time without notice and without incurring any obligations.

DIGITAL CONTROL BOX REPLACEMENT PROCEDURE

Removal Instructions:

(1) Mark the harness plugs 1~5 top to bottom with a permanent marker prior unplugging them from the back of the control box junction terminals and unplug them, ref. (A).

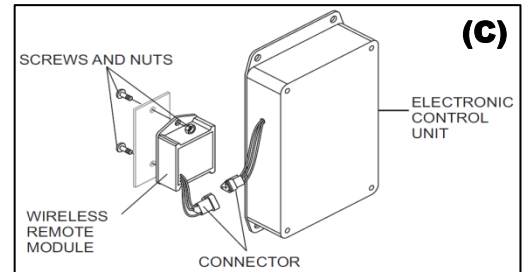
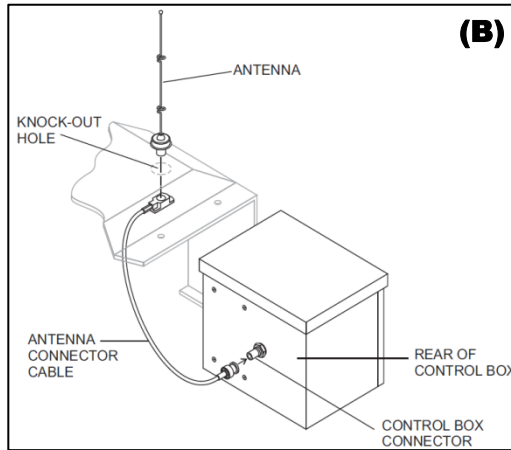
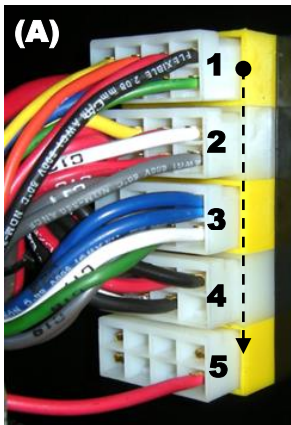
Caution: Never pull by the plug wires when removing the plugs from the control box junction terminals.

Note: Page #2 contains plug configuration reference photos if needed.

(2) Disconnect the optional wireless remote antenna from back of control box, ref. (B).

(3) Remove the front cover from the control box and disconnect the optional wireless remote module and hardware from inside the control box, ref. (C).

(4) Remove 2 bolts from each side of the control box and remove the control box from the machine.



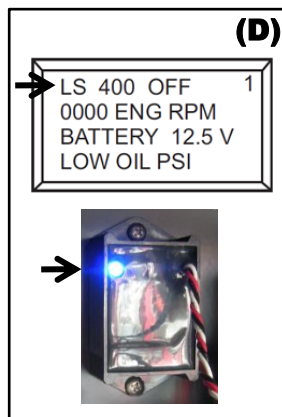
Installation Instructions:

(1) Reverse the above removal instructions for installation.

(2) Place key switch in the ON position and ensure screen "1" displays the corresponding model and if applicable ensure that the wireless remote module blue LED is ON, ref. (D).

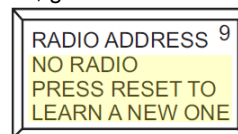
(3) If applicable; go through the "Radio Remote Control Programming" procedure, ref. (E).

(4) Go through operating all the control panel functions to ensure all is working normally.

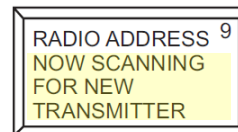


Radio Remote Control Programming (E)

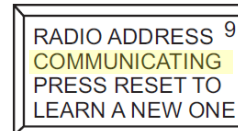
Before starting operation of the hand-held radio remote control, go to Screen 9 of the digital readout screen.



1. Press the **ON/OFF** button on the radio (wireless) remote control to turn on the power. Pull up and hold the **RESET** switch. The display will now show.



2. After 5 seconds, the display will show:



3. The hand-held remote control module is now ready for use.



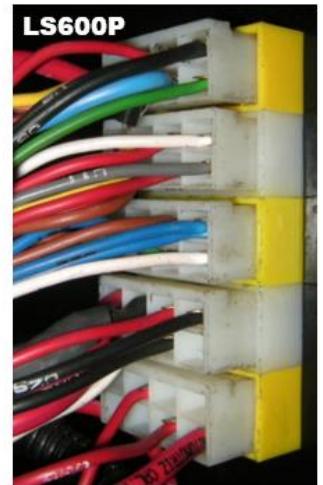
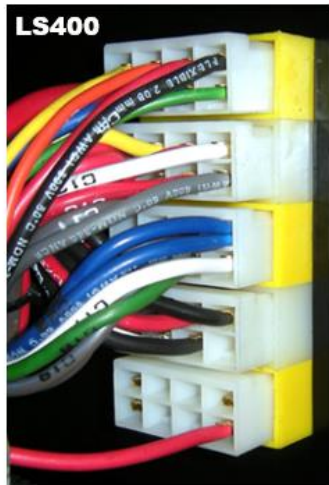
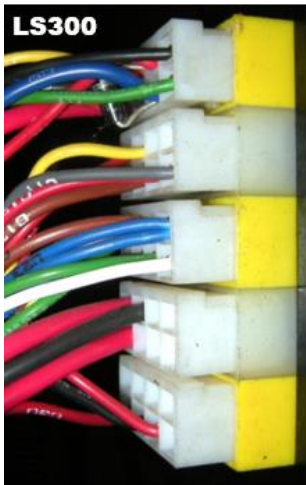
Technical Information

Product Group: MAYCO
Model: LS300, 400, 500, 600P

The information and specifications included in this publication were in effect at the time of approval for printing. Illustrations, descriptions, references and technical data contained in this document are for guidance only and may not be considered as binding. Multiquip Inc. reserves the right to discontinue or change specifications, design or the information published in this publication at any time without notice and without incurring any obligations.

DIGITAL CONTROL BOX REPLACEMENT PROCEDURE

Plugs configuration reference photos



© COPYRIGHT 2021, MULTIQUIP INC, Rev. 1 (05032021)