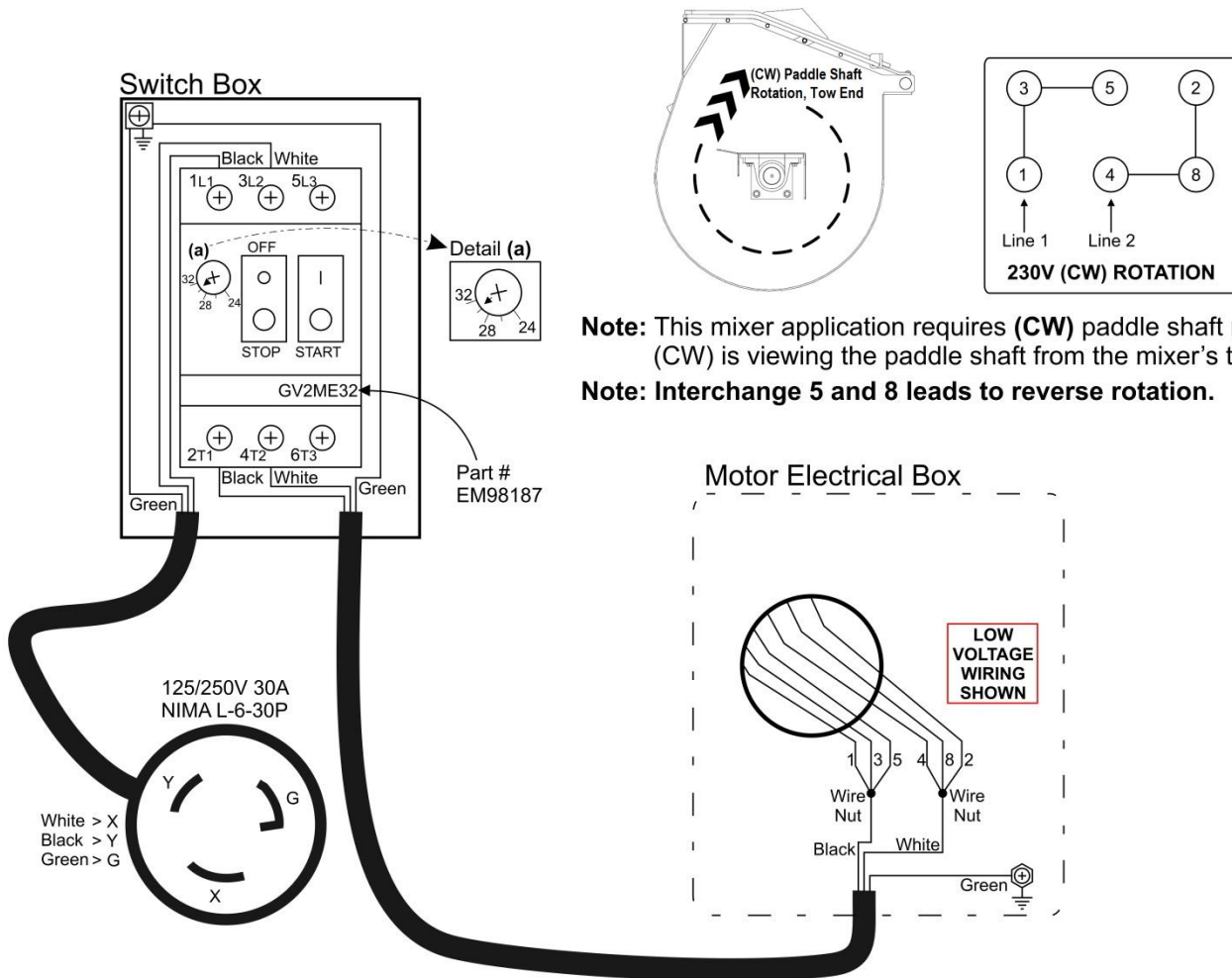


This bulletin is provided for technical reference and service related updates. If you have any questions, comments or do not wish to receive these e-mails, please reply to this e-mail or call the Service Technical Support Group 800 478-1244.

## WIRING AND MOTOR INFORMATION 230V 1Ø

The purpose of this document is to illustrate the wiring configuration for this mixer and provide the general motor data plus the motor starter/protector switch amp setting "detail (a)".



BALDOR RELIANCE SPEC: 37E365W796  
 VOLT: 230, PH: 1, HZ: 60, HP: 5, AMPS: 22, RPM: 1725