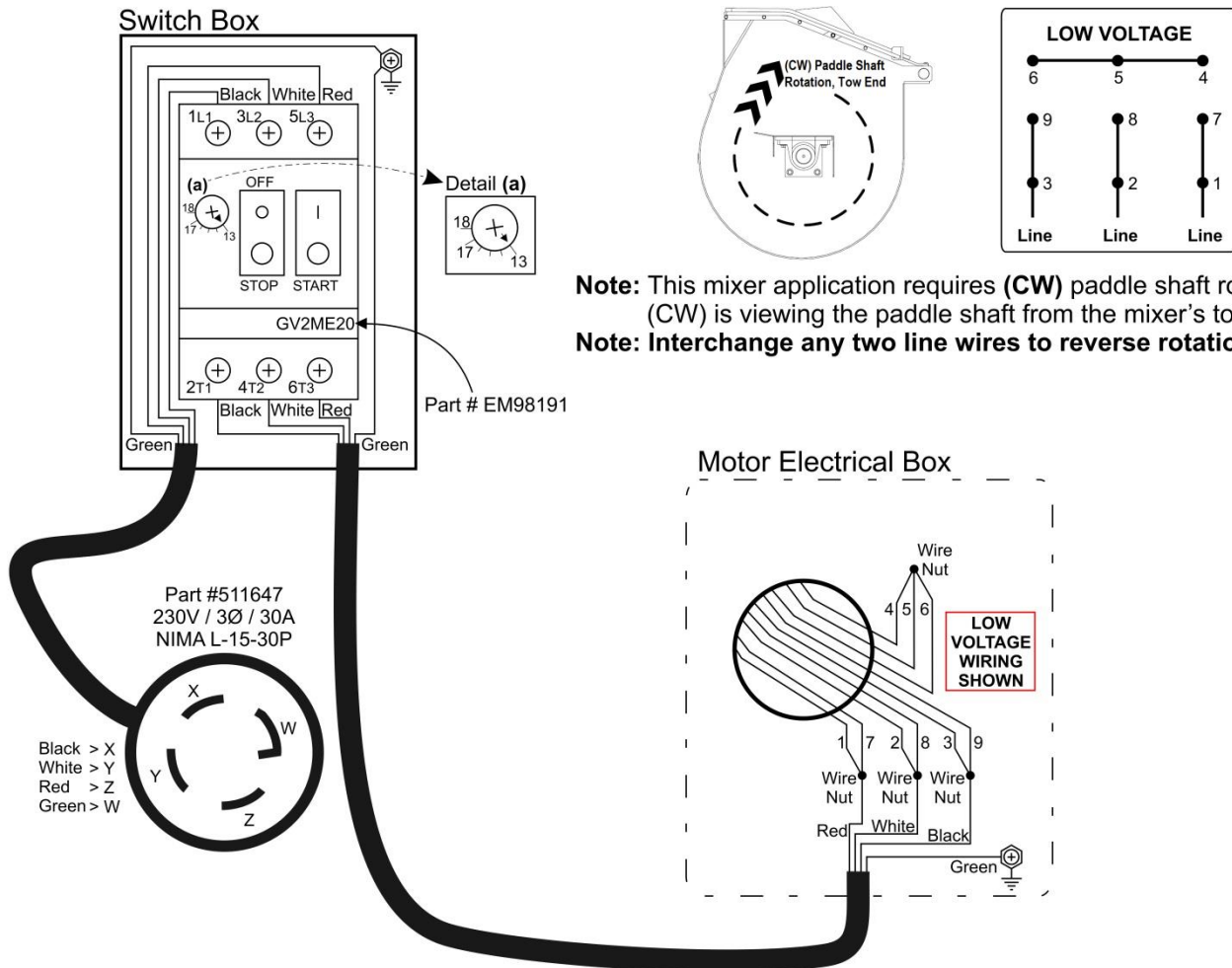


WIRING AND MOTOR INFORMATION 230V 3Ø

The purpose of this document is to illustrate the wiring configuration for these mixers and provide the general motor data plus the motor starter/protector switch amp setting "detail (a)".



BALDOR RELIANCE INDUSTRIAL MOTOR

SPEC: 37ES97X87, VOLTS: 208-230 / 460, AMPS: 16-14 / 7, HZ: 60, PH: 3 Ø, HP: 5, RPM: 1725

TECO/WESTINGHOUSE MOTOR

TYPE: AEHH8PCF, VOLTS: 230 / 460, FLA: 12.24 / 6.12, HZ: 6-60, PH: 3 Ø, HP: 5, FLRPM: 1745