



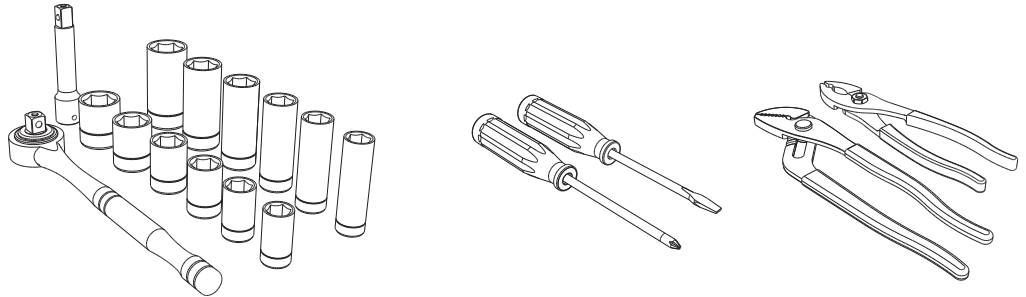
The bulletin is provided for technical reference and service related updates> If you have any questions, comments or do not wish to receive these e-mails, please reply to this e-mail or call the Service Technical Support Group 800 478-1244.

ESSICK PADDLE SHAFT SEALS INSTALLATION

The following instructions are intended to assist the user with the proper installation of Graphite Packing Ring Seals.

REQUIRED TOOLS:

- Ratchet/Socket Set
- Screw driver
- Pliers



WARNING The following should only be done by qualified and experienced service technician. For your safety and the safety of others, please carefully read, understand and observe all instructions.

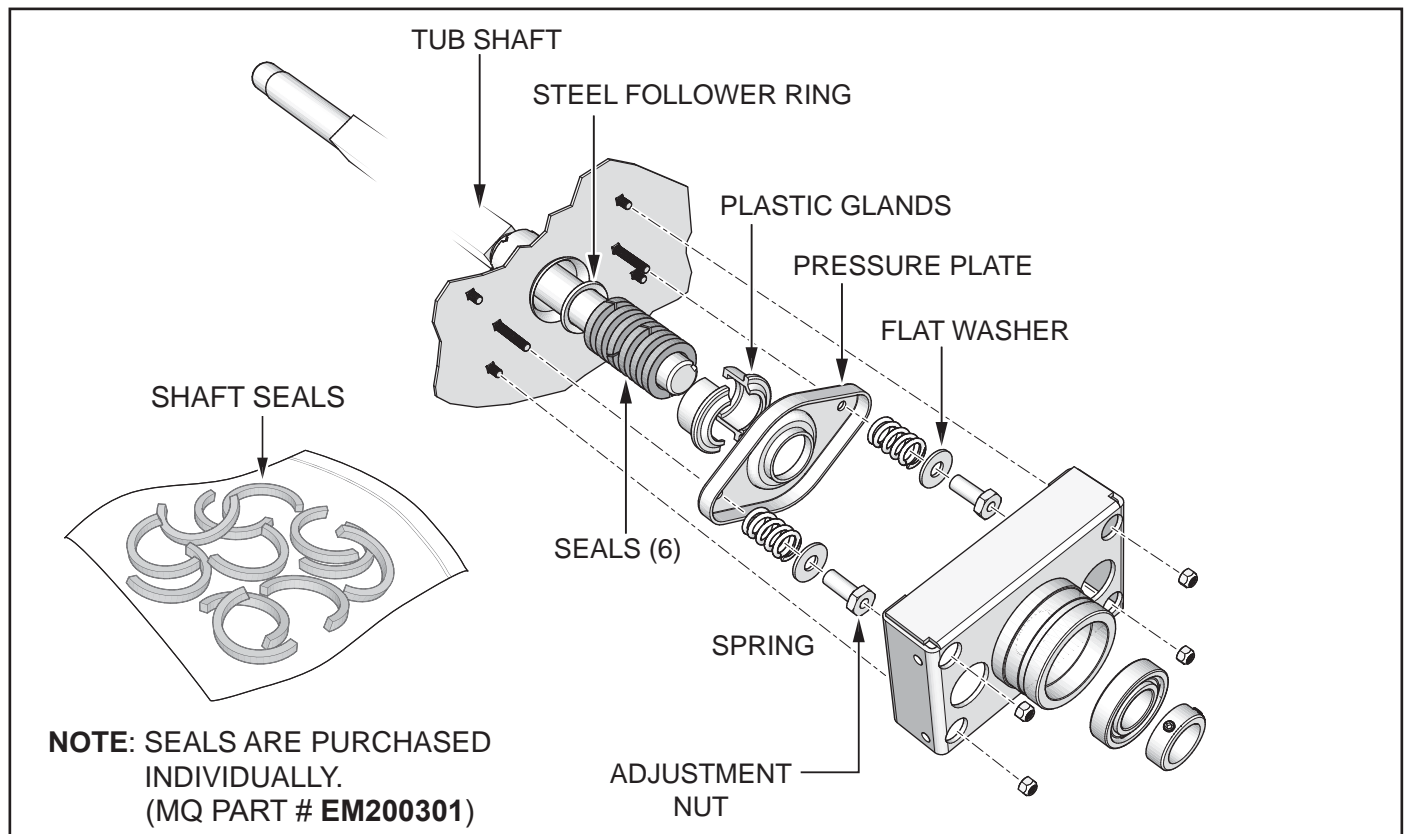


Figure 1: **Component Layout**

Disassemble drum heads and associated components from each side of drum. Using pliers remove the old seal rings and follower ring from the drum packing box. Thoroughly clean packing box and all other parts. Examine paddle shaft seal surface area for wear and scoring. Replace paddle shaft if wear is excessive. The recommended surface finish around 32 (micro inches).



The bulletin is provided for technical reference and service related updates. If you have any questions, comments or do not wish to receive these e-mails, please reply to this e-mail or call the Service Technical Support Group 800 478-1244.

The drum requires total of 12 packings, 6 to each side of drum. Place the shaft seals on a shop towel and apply a generous amount of all purpose water proof grease to each packing rings with a grease gun.

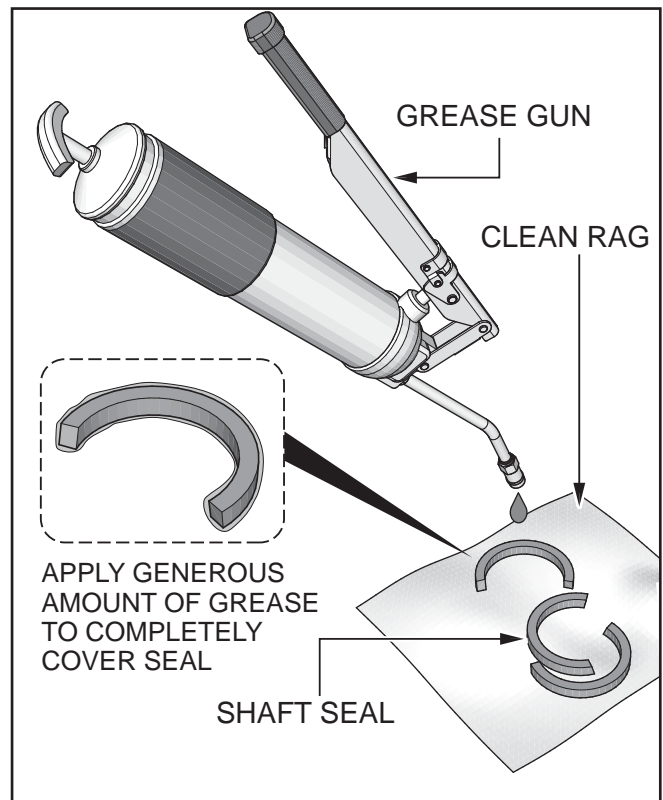


Figure 2: Greasing Packing Ring Seals

Insert steel follower ring beveled side inward. Next, lightly coat the paddle shaft and packing box surface area with grease.

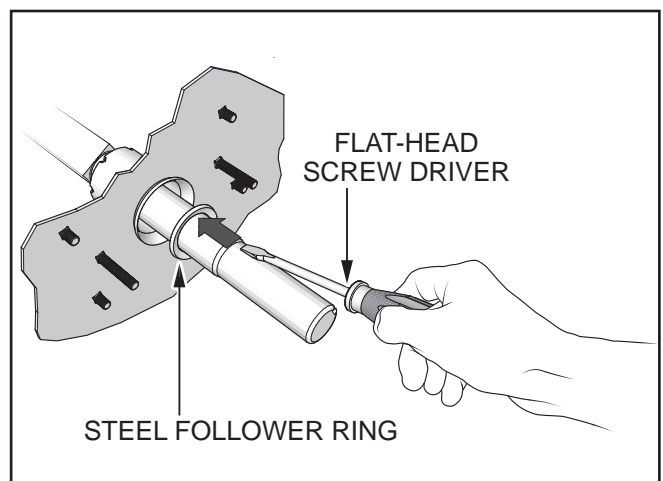


Figure 3: Installing Steel Follower Ring

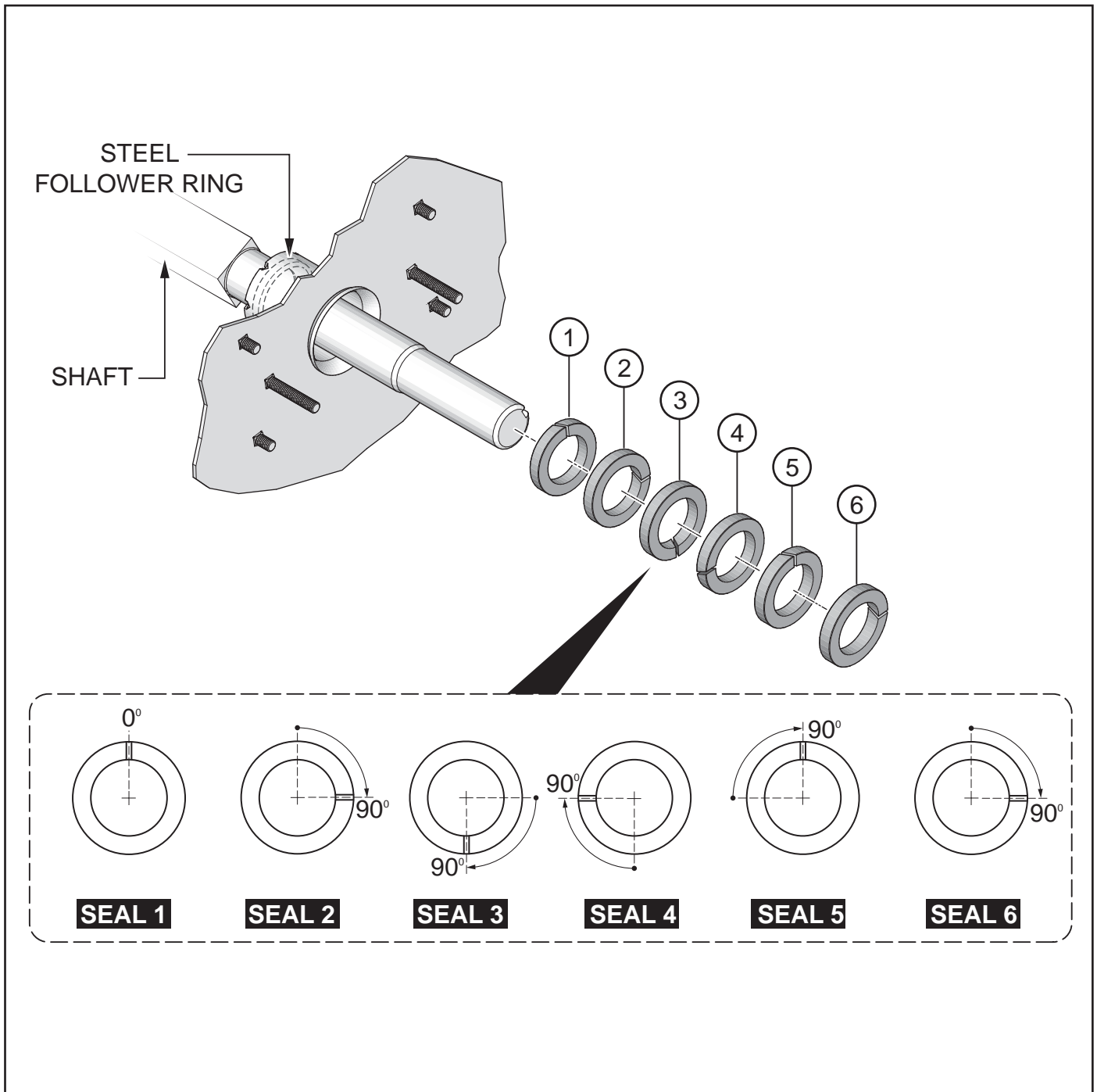


Figure 4: **Packing Ring Seal Installation**

Install one packing ring at a time. Make sure it is clean, and has not picked up dirt during handling. Seat each ring firmly, making sure it is fully seated before the next ring is installed.

Install all 6 packing rings, the joints of successive rings should be staggered and kept 90 degrees apart.



The bulletin is provided for technical reference and service related updates> If you have any questions, comments or do not wish to receive these e-mails, please reply to this e-mail or call the Service Technical Support Group 800 478-1244.

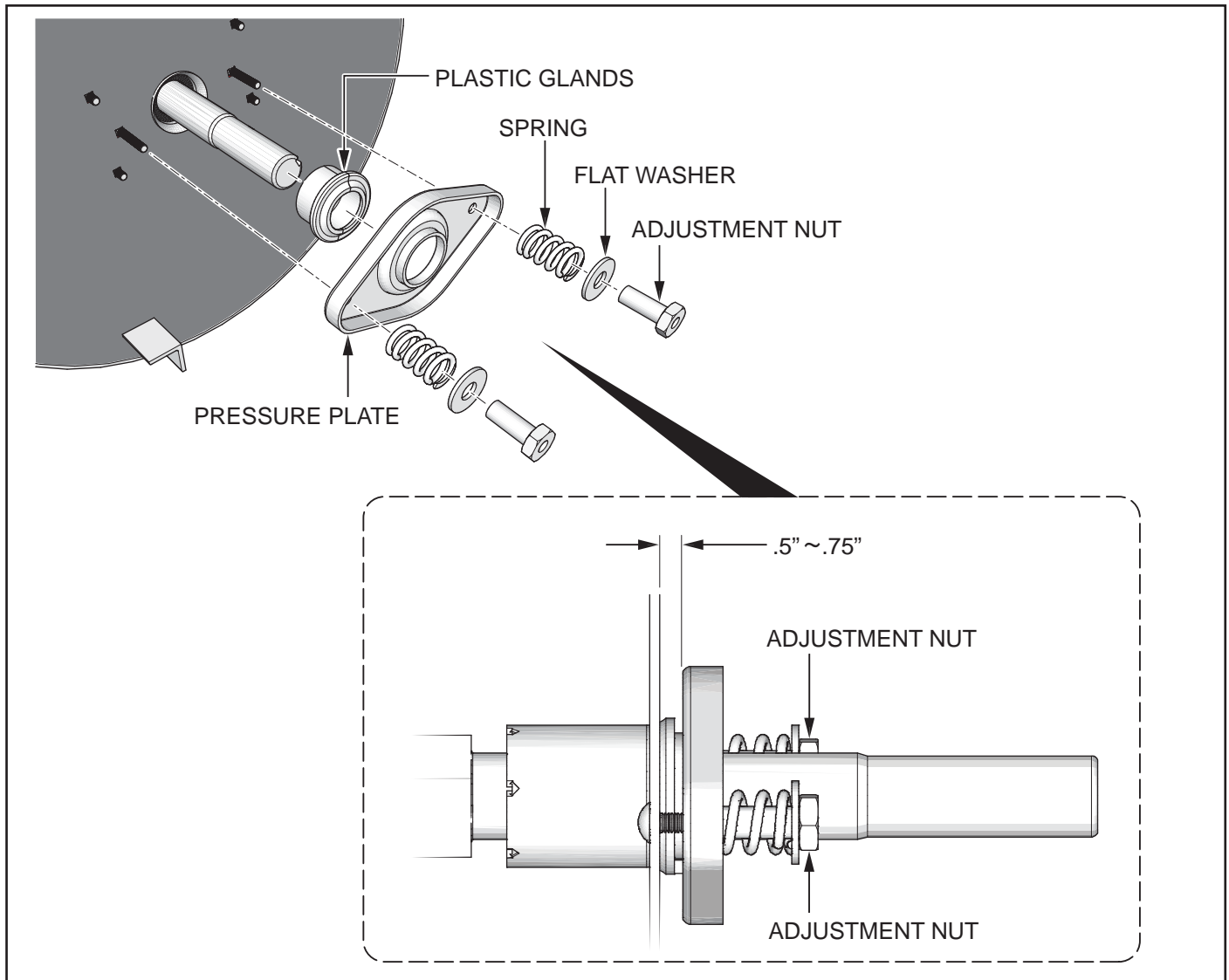


Figure 5: **Adjusting Pressure Plate**

Place the two plastic gland half's onto shaft against packing seals. Next install pressure plate and hardware.

Slightly tighten adjustment nut just enough to hold components in place.

Slowly tighten both adjusting nuts equally applying 25 % ~ 35 % of compression to entire seal set.

The recommend adjustment range .5" ~ .75" distance from drum to pressure plate.

Preventive Maintenance

A property maintained seal prevents material from working around the shaft, causing excessive wear. Keep the drum head clean of material built up so the spring adjusters are free. As the seal naturally wear, material will seep from the drum head. Tighten the adjusting nuts equally until a slight pressure is felt. This procedure should be done periodically as the seals leak.

Once the pressure plate touches the drum, it is time to replace the graphite seals.