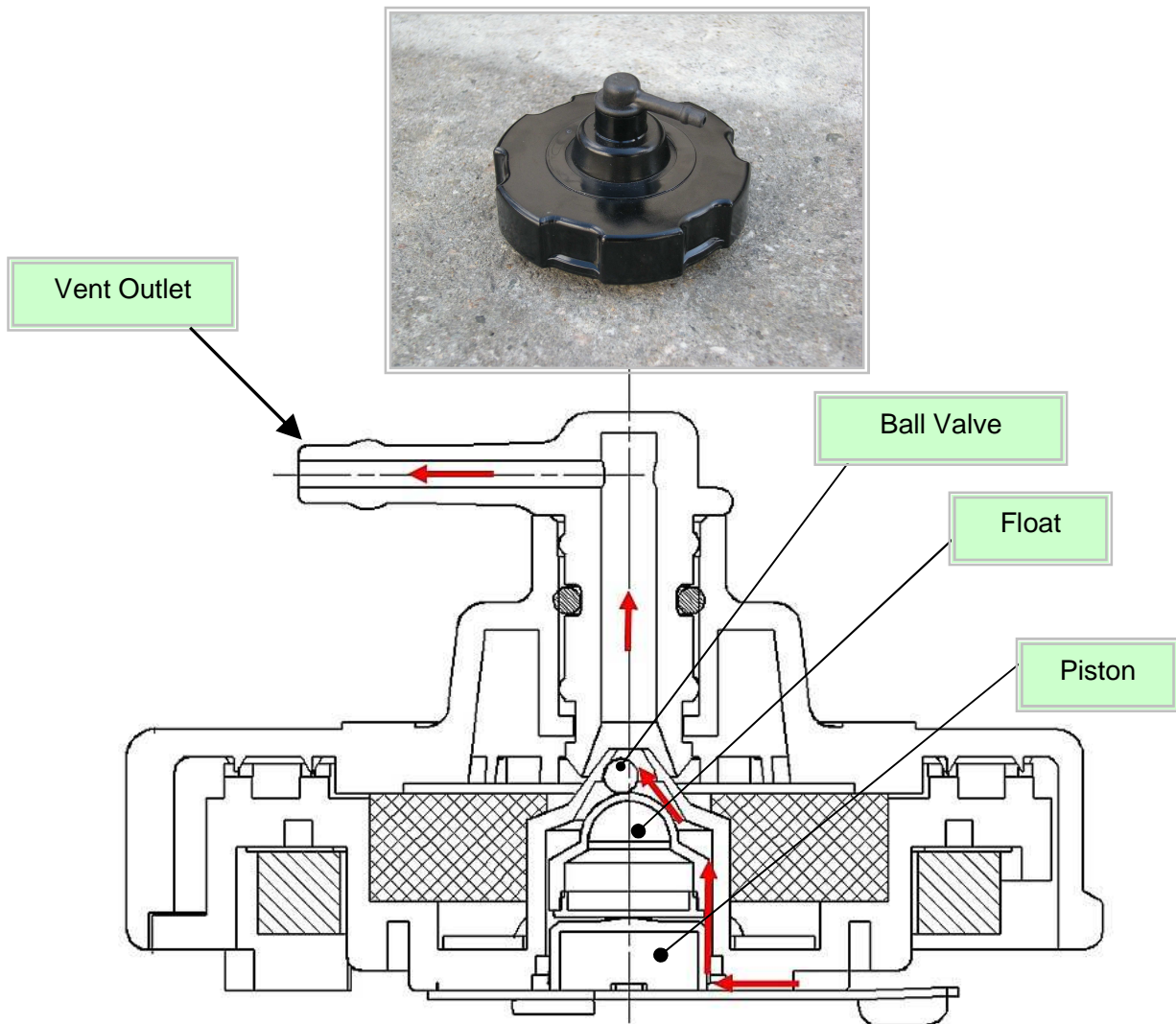


FUEL CAP VENTING

If the generator runs great for 15-20 minutes and shuts down, it could be the fuel cap not venting properly. Before going into details (next page) take a closer look at the cap internally (below).

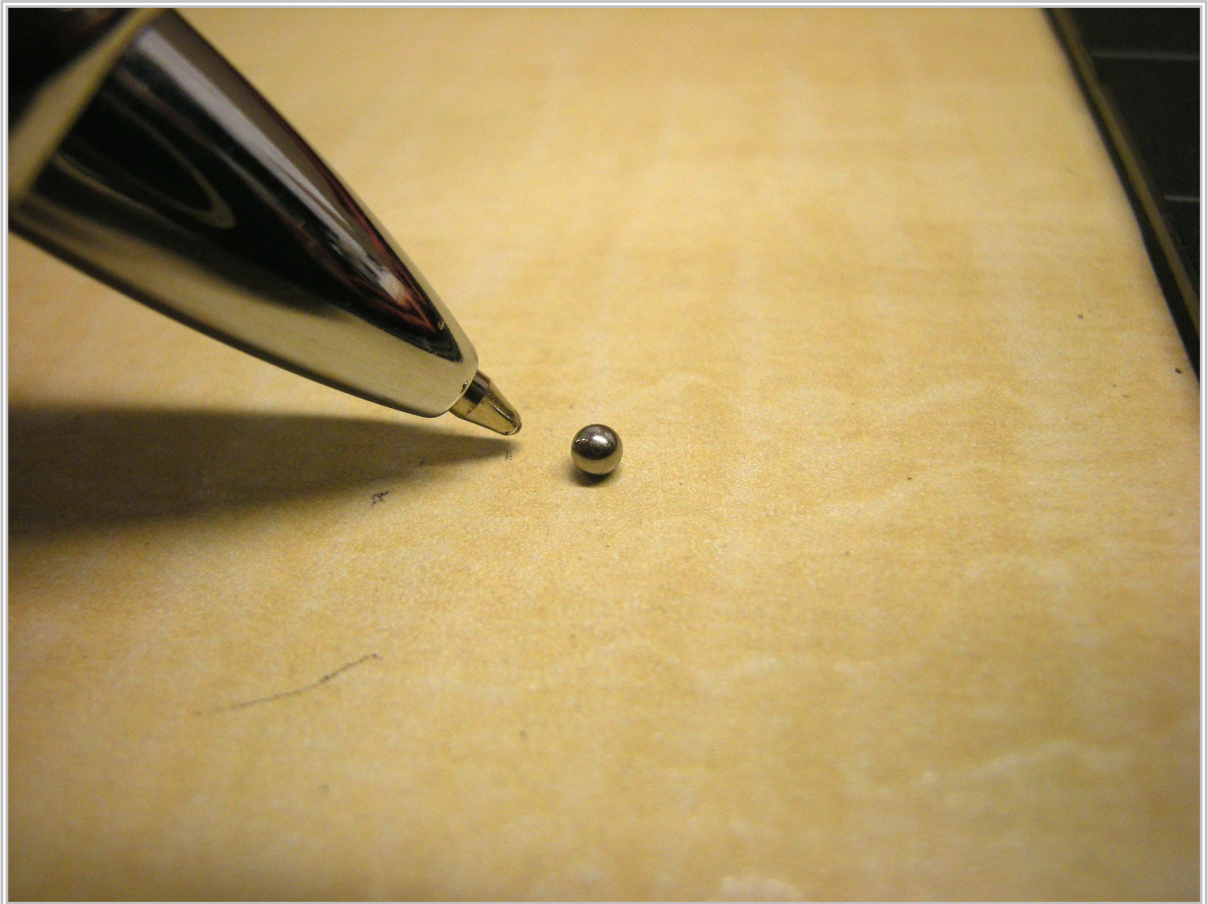


Red arrow shows the path of proper venting in the fuel cap.

(see next page)

The fuel cap has a steel ball valve. Like other fuel related components, carburetors, filters, etc. the fuel cap can become contaminated by stale fuel turning into varnish.

If your fuel cap is suspect of clogging it may be possible the ball valve is sticking and not allowing proper ventilation. Try using an air nozzle and blowing air through the vent outlet or spraying carburetor cleaner to free up the ball valve. (remember SAFETY goggles, protect your eyes) !!



For more info on stale fuel see Technical Information document "TI Stale Fuel"