

# PARTS MANUAL



## **GLOBUG SERIES MODEL GBC8LED LIGHTING SYSTEM *SERIAL NO. G4000001 AND ABOVE***

Revision #2 (01/24/25)



c

To find the latest revision of this publication or associated operation manual, visit our website at: [www.multiquip.com](http://www.multiquip.com)



THIS MANUAL MUST ACCOMPANY THE EQUIPMENT AT ALL TIMES.

**GBC8LED**  
**Lighting System**

Explanation Of Code In Remarks Column..... 4  
Suggested Spare Parts ..... 5

**Component Drawings**

Nameplate And Decals ..... 6–7  
Balloon And Lamp Assembly .....8–11  
Mast Assembly ..... 12–13  
Base Assembly ..... 14–15  
Outrigger Assembly ..... 16–17

<b>NOTICE</b>
Specifications and part numbers are subject to change without notice.

## NOTES

[illegible]

# EXPLANATION OF CODE IN REMARKS COLUMN

The following section explains the different symbols and remarks used in the Parts section of this manual. Use the help numbers found on the back page of the manual if there are any questions.

## NOTICE

The contents and part numbers listed in the parts section are subject to change without notice. Multiquip does not guarantee the availability of the parts listed.

## SAMPLE PARTS LIST

NO.	PART NO.	PART NAME	QTY.	REMARKS
1	12345	BOLT .....	1	INCLUDES ITEMS W/%
2%		WASHER, 1/4 IN. ....		NOT SOLD SEPARATELY
2%	12347	WASHER, 3/8 IN. ...	1	MQ-45T ONLY
3	12348	HOSE .....	A/R	MAKE LOCALLY
4	12349	BEARING .....	1	S/N 2345B AND ABOVE

## NO. Column

**Unique Symbols** — All items with same unique symbol (@, #, +, %, or >) in the number column belong to the same assembly or kit, which is indicated by a note in the “Remarks” column.

**Duplicate Item Numbers** — Duplicate numbers indicate multiple part numbers, which are in effect for the same general item, such as different size saw blade guards in use or a part that has been updated on newer versions of the same machine.

## NOTICE

When ordering a part that has more than one item number listed, check the remarks column for help in determining the proper part to order.

## PART NO. Column

**Numbers Used** — Part numbers can be indicated by a number, a blank entry, or TBD.

TBD (To Be Determined) is generally used to show a part that has not been assigned a formal part number at the time of publication.

A blank entry generally indicates that the item is not sold separately or is not sold by Multiquip. Other entries will be clarified in the “Remarks” Column.

## QTY. Column

**Numbers Used** — Item quantity can be indicated by a number, a blank entry, or A/R.

A/R (As Required) is generally used for hoses or other parts that are sold in bulk and cut to length.

A blank entry generally indicates that the item is not sold separately. Other entries will be clarified in the “Remarks” Column.

## REMARKS Column

Some of the most common notes found in the “Remarks” Column are listed below. Other additional notes needed to describe the item can also be shown.

**Assembly/Kit** — All items on the parts list with the same unique symbol will be included when this item is purchased.

Indicated by:

“INCLUDES ITEMS W/(unique symbol)”

**Serial Number Break** — Used to list an effective serial number range where a particular part is used.

Indicated by:

“S/N XXXXX AND BELOW”

“S/N XXXX AND ABOVE”

“S/N XXXX TO S/N XXX”

**Specific Model Number Use** — Indicates that the part is used only with the specific model number or model number variant listed. It can also be used to show a part is NOT used on a specific model or model number variant.

Indicated by:

“XXXXX ONLY”

“NOT USED ON XXXX”

**“Make/Obtain Locally”** — Indicates that the part can be purchased at any hardware shop or made out of available items. Examples include battery cables, shims, and certain washers and nuts.

**“Not Sold Separately”** — Indicates that an item cannot be purchased as a separate item and is either part of an assembly/kit that can be purchased, or is not available for sale through Multiquip.

# SUGGESTED SPARE PARTS

---

## GBC8LED LIGHTING SYSTEM

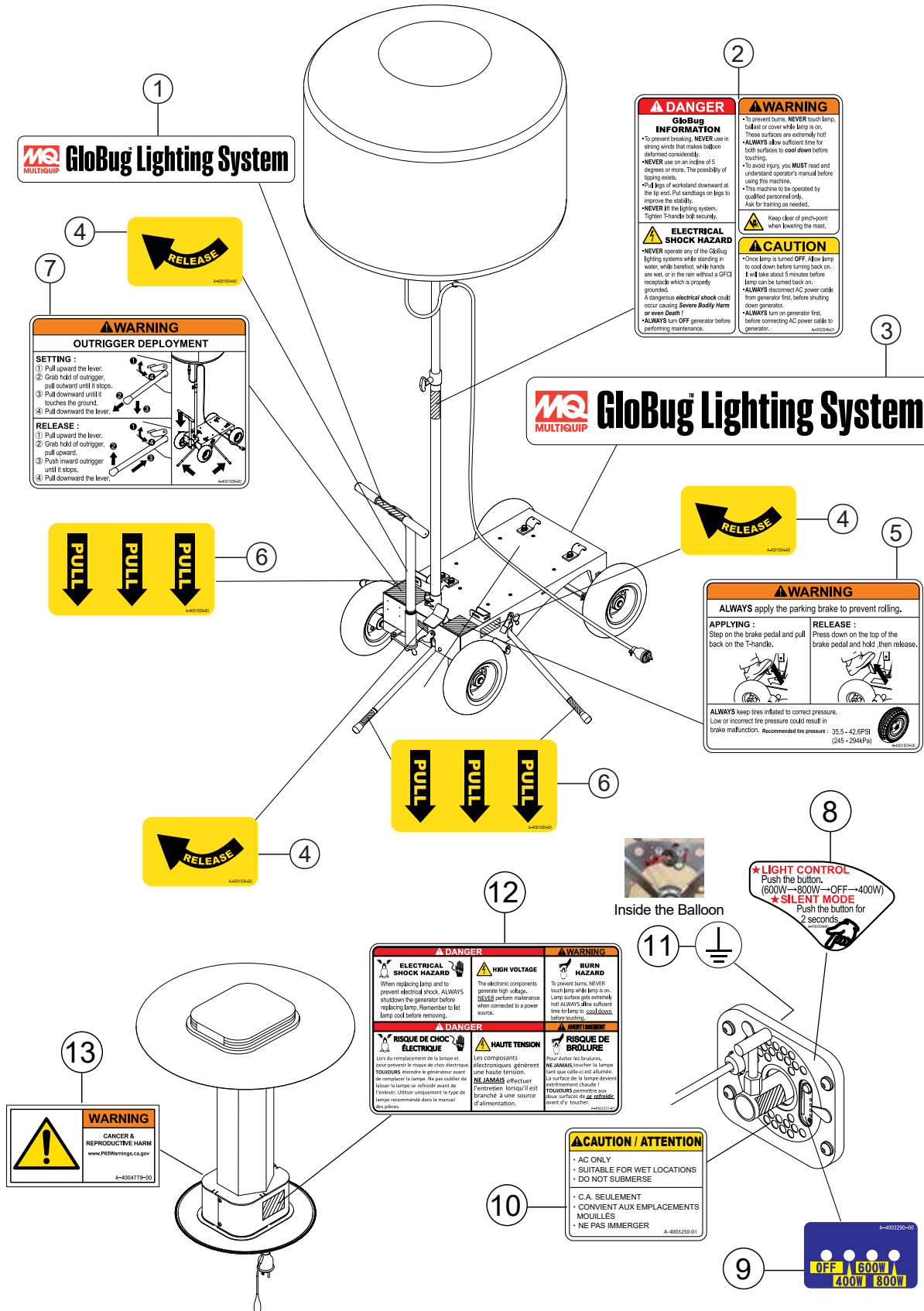
1 to 3 units

Qty.	P/N	Description
3.....	A300282600.....	LED HEATSINK ASSY
2.....	A100108400.....	BALLOON CLOTH

### NOTICE

Part numbers on this Suggested Spare Parts list may supersede/replace the part numbers shown in the following parts lists.

# NAMEPLATE AND DECALS

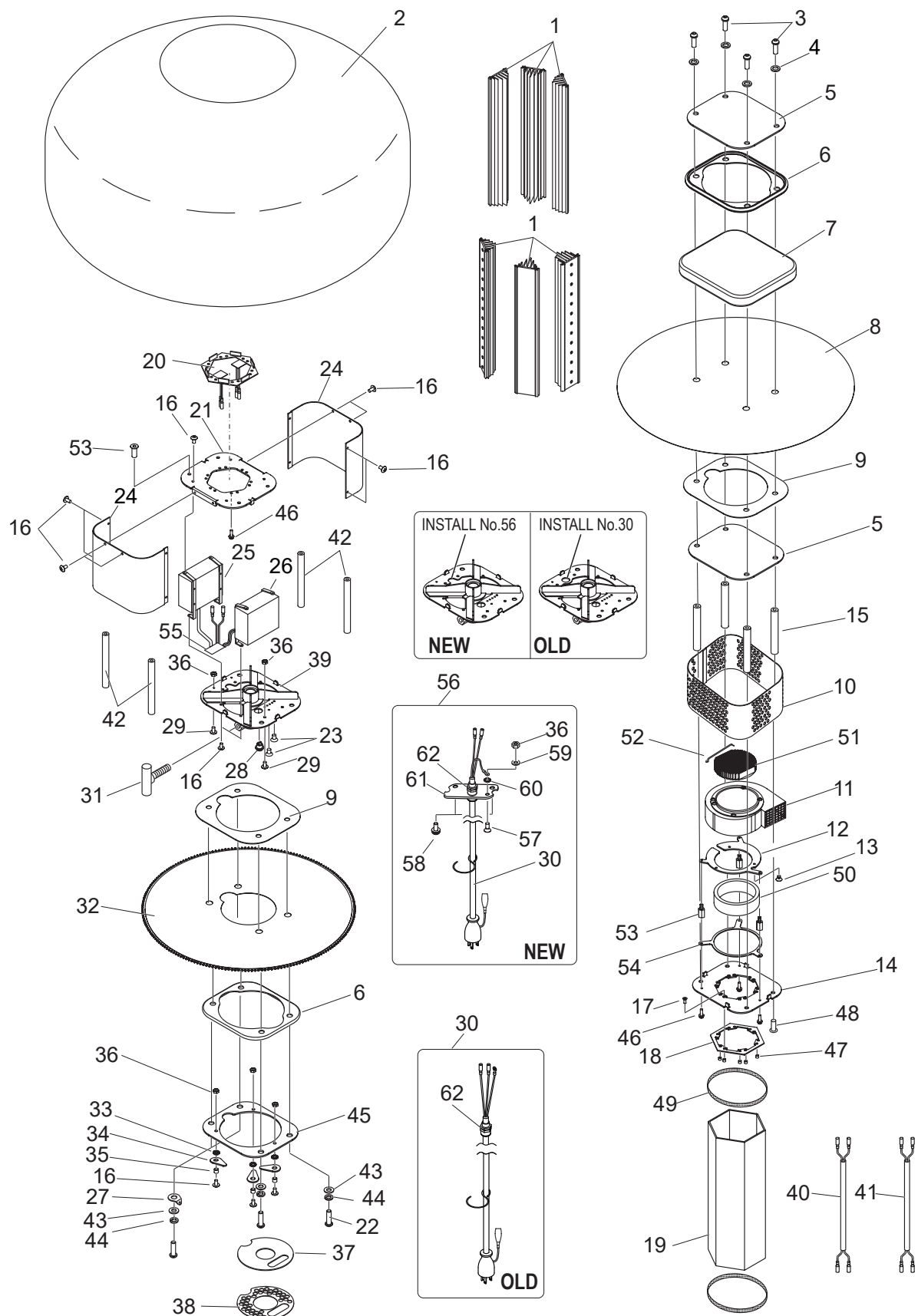


## NAMEPLATE AND DECALS

---

<u>NO.</u>	<u>PART NO.</u>	<u>PART NAME</u>	<u>QTY.</u>	<u>REMARKS</u>
1	A400193300	DECAL; GLOBUG LIGHTING SYSTEM	1	
2	A400324801	DECAL; GLOBUG INFORMATION	1	
3	A400194900	DECAL; GLOBUG LIGHTING SYSTEM	1	
4	A400324500	DECAL; OUTRIGGER, RELEASE	3	
5	A400324000	DECAL; WARNING, PARKING BRAKE/TIRE PRESSURE	1	
6	A400324600	DECAL; OUTRIGGER, PULL	3	
7	A400324700	DECAL; WARNING, OUTRIGGER DEPLOYMENT	1	
8	A400363401	DECAL; LIGHT CONTROL	1	
9	A400329000	DECAL; DIMMER SWITCH LEDS	1	
10	A400325001	DECAL; CAUTION, CSA	1	
11	A400372800	DECAL; GROUND	1	
12	A400325101	DECAL; ELECTRIC SHOCK, HIGH VOLTAGE, BURN HAZ.	1	
13	A400477900	DECAL; WARNING PROP-65	1	

# BALLOON AND LAMP ASSY.

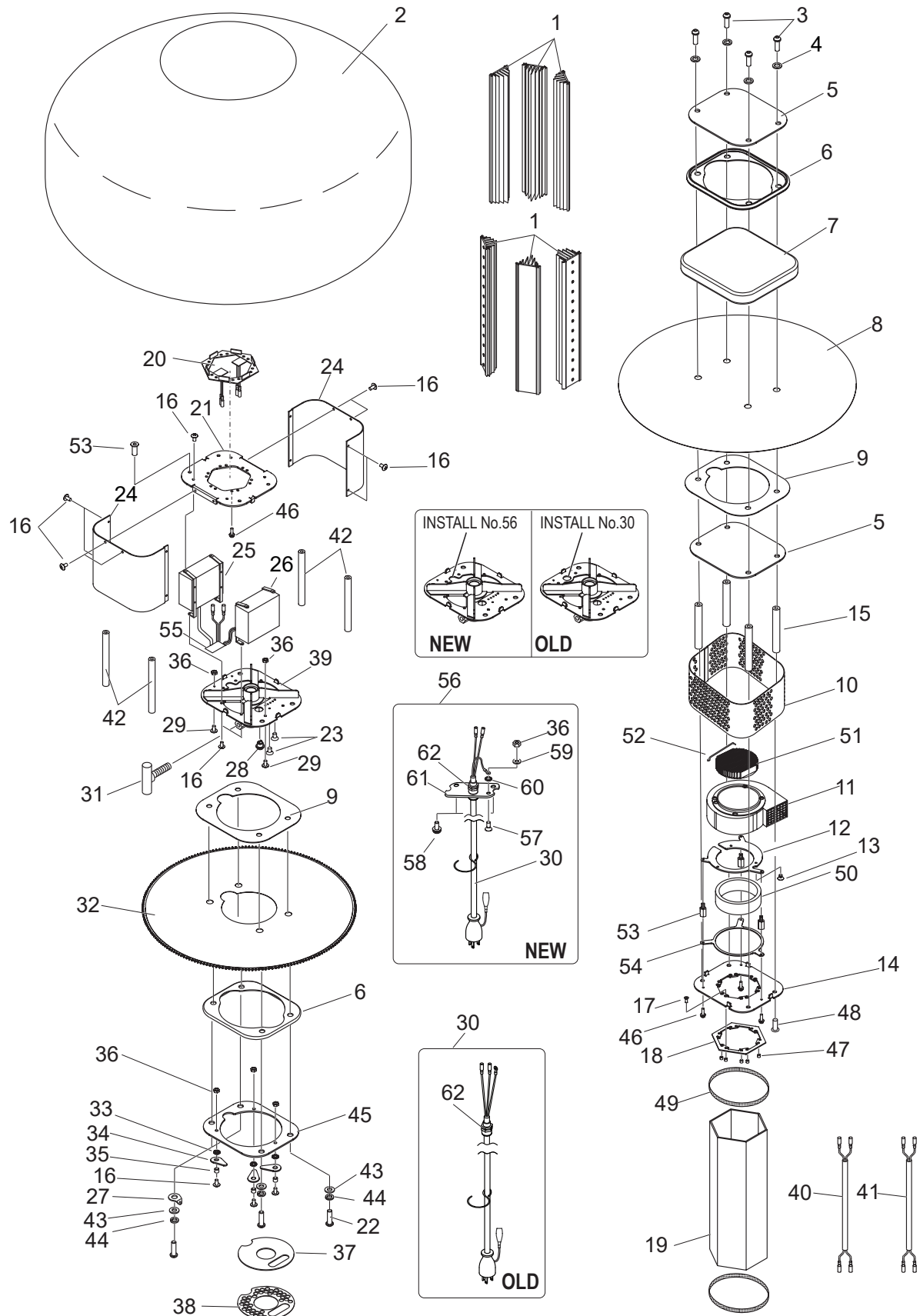




## BALLOON AND LAMP ASSY.

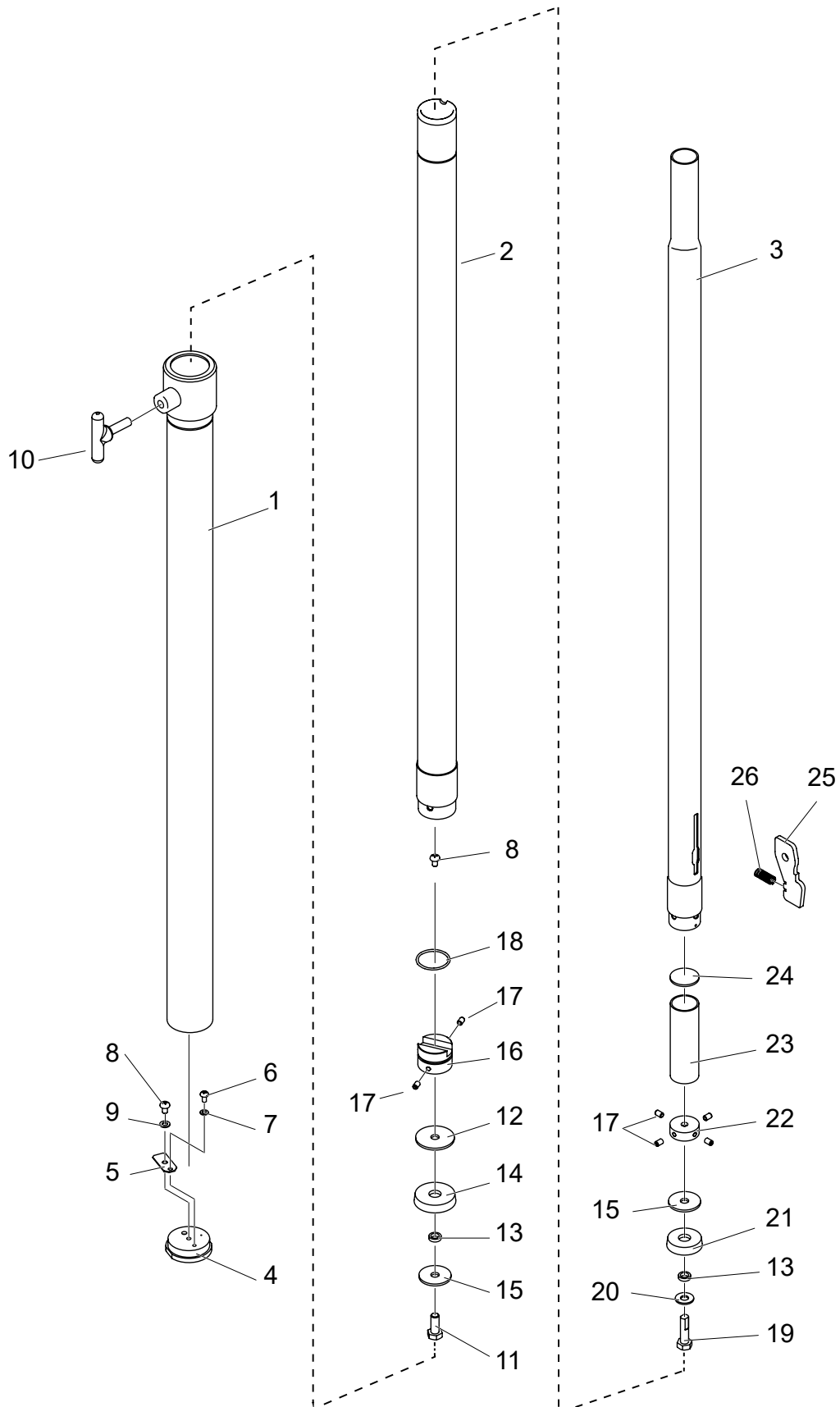
<u>NO.</u>	<u>PART NO.</u>	<u>PART NAME</u>	<u>QTY.</u>	<u>REMARKS</u>
1	A300282604	LED HEATSINK ASSY.	6	
2	A100108400	BALLOON, CLOTH	1	
3	0014708025	BUTTON SCREW, M8X25	4	
4	E000132100	SUS. BONDED WASHER, 8X19X4.1)	4	
5	A300257000	PLATE, TOP	2	
6	A300162401	SEAL, PACKING, WHITE .....	2	S/N G4001056 AND BELOW
6	A300162402	SEAL, PACKING, BLACK .....	2	S/N G4001057 AND ABOVE
7	A100107701	BALLOON COVER .....	1	S/N G4001064 AND BELOW
7	A100107702	BALLOON COVER .....	1	S/N G4001065 AND ABOVE
8	A100101200	SHEET, TOP	1	
9	2214500230	SEAL, FLAT	2	
10	A300274701	VESSEL, TOP .....	1	S/N G4001068 AND BELOW
10	A300274703	VESSEL, TOP .....	1	S/N G4001069 AND ABOVE
11	A300411300	FAN MOTOR, DC	1	
12	A300281401	PLATE, FAN	1	
13	0023204006	SCREW, M4X6	3	
14	A300247702	TOP PLATE, LAMP	1	
15	A400317400	SPACER A	4	
16	0024304008	TRUSS SCREW, M4X8 .....	19	W/ LOCTITE
17	0025004012	COUNTERSUNK SCREW, M4X12	12	
18	A400295300	STOPPER, GUARD	1	
19	A300243602	GUARD, LED	1	
20	A300282501	ADAPTER BOARD	1	
21	A300290400	PLATE, LAMP	1	
22	0014708035	BUTTON SCREW, M8X35	4	
23	0023203005	COUNTERSUNK SCREW, M3X5 .....	2	W/ LOCKTITE
24	A300291201	VESSEL	2	
25	A000065605	LED POWER SUPPLY, MASTER .....	1	INCLUDES ITEMS W/#
26	A000065704	LED POWER SUPPLY, SLAVE	1	
27	2204510110	WASHER	1	
28	A400329901	DIMMING SWITCH	1	
29	0022404008	TRUSS SCREW, M4X8	2	
30\$	A300333800	POWER CABLE, US	1	
31	A400209803	BALLOON KNOB	1	
32	A100097601	SHEET, BOTTOM .....	1	S/N G4001068 AND BELOW
32	A100097602	SHEET, BOTTOM .....	1	S/N G4001069 AND ABOVE
33	E000119300	WAVE WASHER, M6	3	
34	A400030700	STOPPER, FILTER	3	
35	E000077500	SPACER	3	
36\$	0033104000	NUT M4	5	
37	A400273800	FILTER	1	
38	A300244600	PLATE, AIR	1	

# BALLOON AND LAMP ASSY. (CONT'D.)



## BALLOON AND LAMP ASSY. (CONT'D.)

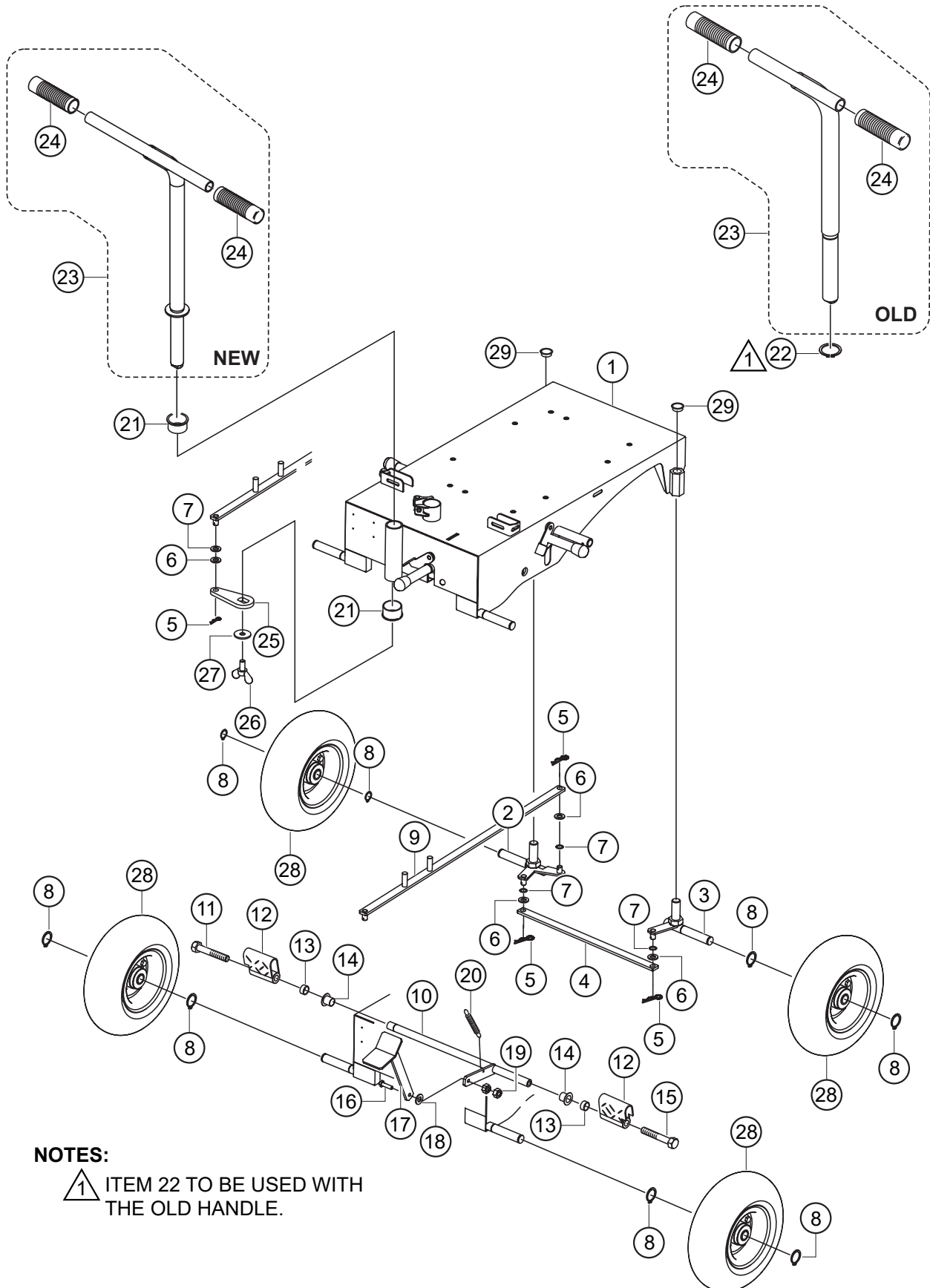
<u>NO.</u>	<u>PART NO.</u>	<u>PART NAME</u>	<u>QTY.</u>	<u>REMARKS</u>
39	A200105100	FLANGE, LED (OLD).....	1.....	FOR ITEM 30 S/N G40009XX AND BELOW
39	A200156001	FLANGE, LED (NEW).....	1.....	FOR ITEM 56 S/N G40010XX AND ABOVE
40	A400305001	WIRE, FAN	1	
41	A400331100	WIRE, FAN-VC	1	
42	A400311400	SPACER B	4	
43	0043108000	WASHER, M8	4	
44	0043208000	WASHER, LOCK M8	4	
45	A300256700	PLATE, BOTTOM .....	1.....	S/N G4001068 AND BELOW
45	A300256702	PLATE, BOTTOM .....	1.....	S/N G4001069 AND ABOVE
46	0023004015	SCREW AND WASHER, M4X15 .....	15.....	W/ LOCKTITE
47	E000122300	SPACER	12	
48	E000119600	BOLT, M8X20	8	
49	A400340701	PACKING, GUARD	2	
50	A400306700	PACKING, FAN	1	
51	A400330201	HEATSINK, FAN	1	
52	A400345600	STOPPER, FAN	1	
53	E000127200	SPACER	3	
54	A300268500	GUIDE, FAN	1	
55#	A400394103	DIMMING BOARD, 800 .....	1.....	W/ THERMO SENSOR
56	A000098400	CABLE ASSY. US .....	1.....	INCLUDES ITEMS W/\$
57\$	0020604010	COUNTERSUNK SCREW, M4X10	1	
58\$	0023305010	SCREW AND WAHER ASSY., M5X10	2	
59\$	0043204000	WASHER, LOCK M4	1	
60\$	0043904000	TOOTHED WASHER, M4	1	
61\$	A400495102	PLATE, CABLE	1	
62\$	E000130200	CABLE GLAND	1	



**MAST ASSY.**

<u>NO.</u>	<u>PART NO.</u>	<u>PART NAME</u>	<u>QTY.</u>	<u>REMARKS</u>
1	A300175402	FIRST MAST	1	
2	A300175500	SECOND MAST	1	
3	A300175601	THIRD MAST	1	
4	A400199700	PLUG	1	
5	A400112700	LEAF VALVE	1	
6	0023104008	SCREW, M4X8	1	
7	0043104000	WASHER, M4	1	
8	0023105008	SCREW, M5X8	2	
9	0043105000	WASHER, M5	1	
10	A400187602	KNOB	1	
11	0013108020	BOLT, M8X20	1	
12	A400200500	WASHER	1	
13	A400110200	WASHER, MAST 1	2	
14	A400200700	RUBBER, MAST	1	
15	A400092801	WASHER, SECOND MAST	2	
16	A400200800	BOTTOM PLATE	1	
17	0021805008	SET SCREW, M5X8	6	
18	E000081200	O RING	1	
19	A400202700	BOLT	1	
20	0043108000	WASHER, M8	1	
21	A400109600	RUBBER, MAST 1	1	
22	A400092402	BOTTOM PLATE 1	1	
23	A400200300	PIPE, LEVER	1	
24	A400321800	WASHER	1	
25	A400200201	LEVER, HOOK	1	
26	A400345901	SPRING, HOOK	1	

# BASE ASSY.



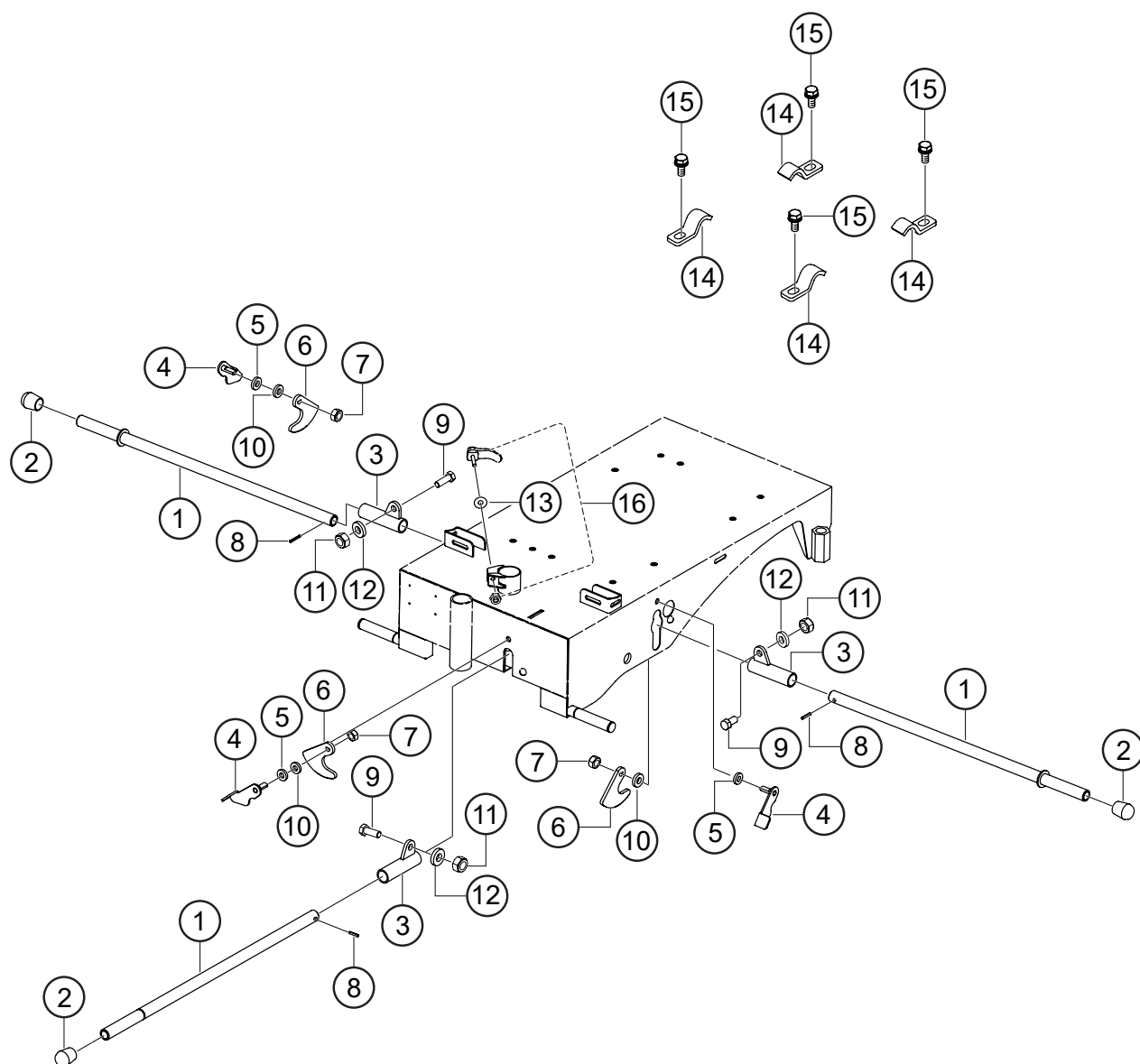
## NOTES:

- 1 ITEM 22 TO BE USED WITH THE OLD HANDLE.

**BASE ASSY.**

<u>NO.</u>	<u>PART NO.</u>	<u>PART NAME</u>	<u>QTY.</u>	<u>REMARKS</u>
1	A100064701	BASE PLATE	1	
2	A300147201	FRONT SHAFT, LEFT	1	
3	A300147301	FRONT SHAFT, RIGHT	1	
4	A300056800	LINK, FRONT SHAFT	1	
5	0053512000	PIN, 12	4	
6	0043112000	WASHER, M12	4	
7	1504120130	WASHER, 12.2DX18DX0.5T	4	
8	0040720000	SNAP RING, 20	8	
9	A300137101	STEERING LINK	1	
10	A300150900	BRAKE SHAFT	1	
11	1521120131	BOLT, M12X75 LEFT SCREW	1	
12	2071214010	BRAKE	2	
13	A400189601	SPACER, BRAKE	2	
14	1503180130	SLEEVE BEARING, 18DX20DX20	2	
15	0013212075	BOLT, M12X75	1	
16	0010308030	BOLT, M8X30	1	
17	2001200313	BRAKE PEDAL	1	
18	0043108000	WASHER, M8	1	
19	0033108000	NUT, M8	2	
20	1041000131	SPRING, BRAKE	1	
21	1503300130	SLEEVE BEARING, 30DX34DX20	2	
22	0040730000	SNAP RING .....	1	FOR ITEM 23 ONLY
23	A200023001	HANDLE .....	1	INCLUDES ITEMS W/# S/N G4001032 AND BELOW
23	A200193402	HANDLE .....	1	INCLUDES ITEMS W/\$ S/N G4001033 AND ABOVE
24	1102700130	HANDLE GRIP	2	
25	A400176500	LINK, HANDLE	1	
26	0014212025	WING BOLT, M12X25	1	
27	0043112041	WASHER, 12DX40DX3.2T	1	
28	E000014500	TIRE ASSY., 4.10/3.50-5	4	
29	1652000430	CAP	2	

## OUTRIGGER ASSY.





## OUTRIGGER ASSY.

<u>NO.</u>	<u>PART NO.</u>	<u>PART NAME</u>	<u>QTY.</u>	<u>REMARKS</u>
1	A300162202	OUTRIGGER	3	
2	E000149500	RUBBER FOOT	3	
3	A400175302	HOLDER, OUT, RIGHT	3	
4	A400176901	LEVER, OUT, RIGHT	3	
5	A400114401	WASHER	3	
6	A300147802	WEIGHT, OUT, RIGHT	3	
7	0033210000	SELF LOCK NUT, M10	3	
8	0053304025	SPRING PIN, M4X25	3	
9	0013112030	BOLT, M12X30	3	
10	0043110000	WASHER, M10	3	
11	0033212000	SELF LOCK NUT, M12	3	
12	0043112000	WASHER, M12	3	
13	0043108000	WASHER, M8	1	
14	A400166400	LOCKING CLAMP	4	
15	0013510025	BOLT AND WASHER, M10X25	4	
16	2212780310	LEVER W/ SPECIAL NUT, CLAMP	1	

# PARTS MANUAL

## HERE'S HOW TO GET HELP

PLEASE HAVE THE MODEL AND SERIAL  
NUMBER ON-HAND WHEN CALLING

### UNITED STATES

#### ***Multiquip Inc.***

(310) 537- 3700  
6141 Katella Avenue Suite 200  
Cypress, CA 90630  
E-MAIL: [mq@multiquip.com](mailto:mq@multiquip.com)  
WEBSITE: [www.multiquip.com](http://www.multiquip.com)

---

### CANADA

#### ***Multiquip***

(450) 625-2244  
4110 Industriel Boul.  
Laval, Quebec, Canada H7L 6V3  
E-MAIL: [infocanada@multiquip.com](mailto:infocanada@multiquip.com)

### UNITED KINGDOM

#### ***Multiquip (UK) Limited Head Office***

0161 339 2223  
Unit 2, Northpoint Industrial Estate, Globe Lane,  
Dukinfield, Cheshire SK16 4UJ  
E-MAIL: [sales@multiquip.co.uk](mailto:sales@multiquip.co.uk)

© COPYRIGHT 2025, MULTIQUIP INC.

Multiquip Inc. and the MQ logo are registered trademarks of Multiquip Inc. and may not be used, reproduced, or altered without written permission. All other trademarks are the property of their respective owners and used with permission.

This manual MUST accompany the equipment at all times. This manual is considered a permanent part of the equipment and should remain with the unit if resold.

The information and specifications included in this publication were in effect at the time of approval for printing. Illustrations, descriptions, references and technical data contained in this manual are for guidance only and may not be considered as binding. Multiquip Inc. reserves the right to discontinue or change specifications, design or the information published in this publication at any time without notice and without incurring any obligations.

