



**Service Bulletin No. GS20060608**  
**Subject: Capacitor Grounding Module**  
**Model: GDP-5000H/GDP5H**  
**Product Group: High-Cycle Generators**  
**Date: June 08, 2006**

**SERVICE BULLETIN**

**Group: GS**

**Mandatory**
                 
  **Information**
                 
  **Recommended Change**

**Series/Parts Affected:**

**Machines Affected:**

**Model .....Serial number Range**

**GDP-5000H .....S/N ALL**  
**GDP-5H .....S/N 5541049 and Below**

<p><b>SERVICE INFORMATION</b></p> <p><b>MANDATORY UPDATE:</b> The above referenced serial number generators may experience the following:</p> <p><b>Problem:</b></p> <ul style="list-style-type: none"> <li>The GDP Series generators listed above <b>DO NOT</b> have a ground connected to the armature. The absence of the armature ground could result in electrical shock to personnel.</li> </ul> <p><b>Solution 1:</b></p> <ul style="list-style-type: none"> <li>Install a "<b>Capacitor Module Kit</b>" inside the control panel. This module will eliminate the possibility of electrical shock caused by the generator.</li> </ul>
--

<b>PARTS INFORMATION</b>			
<b>Quantity</b>	<b>Part #</b>	<b>Description</b>	<b>Remarks</b>
1	GDPCAPKIT	Kit, Capacitor Module, GDP-5000H/GDP-5H	<b>Bracket Required For GDP-5000H Bracket Not Required For GDP-5H</b>

## INSTALLATION INSTRUCTIONS

### **WORK SAFELY!**

Only a qualified service technician with proper training should perform this installation.

### **Required Tools/Materials**

- 8 mm Wrench or Socket
- Phillips Head Screwdriver

### **Safety Procedures**

Follow all shop safety procedures before attempting installation of the Capacitor Module Kit:

### **Front Panel Removal (GDP-5H)**

1. Place the generator on a level secure workbench that is free of dirt and debris.
2. Using an 8 mm wrench or socket, remove the hex head bolts (4) that secure the control panel to the generator frame. See Figure 1.



**Figure 1. GDP-5H Control Panel Removal**

3. After the four front panel bolts have been removed, pull the control panel forward and tilt downward. To support the control panel, place a wood block underneath as shown in Figure 2.



**Figure 2. Control Panel Support Block**

4. Remove the hex nut and machine screw from the GFCI receptacle (5-20R) as shown in Figure 3.



**Figure 3. (GFCI Receptacle)**

5. Install the capacitor module on top of the GFCI receptacle-mounting tab as shown in Figure 4. Align the hole on the capacitor module with the hole on the GFCI mounting tab.
6. Reinstall the hex nut and machine screw (step 4) and tighten securely. If desired, you can use the supplied hex nut when securing the components.

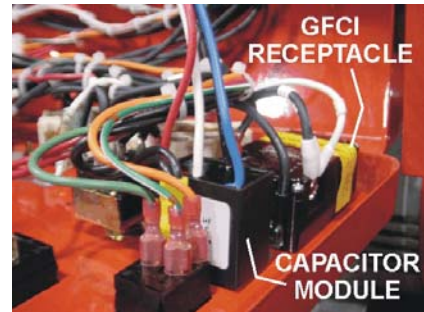


Figure 4. Mounting The Capacitor Module

7. Route the black wire from the capacitor module as necessary, securing with tie-wraps and connect it to the generator ground terminal as shown in Figure 5. Note: it may be necessary to fold the black wire due to its length.



Figure 5. Ground Terminal

8. Route and connect the **RED** wire on the capacitor module to the **U** position (contact) on the terminal board as shown in Figure 6. Connect the **WHITE** wire to the **V** position (contact) and connect the **BLUE** wire to the **W** position (contact) on the terminal board. Use Tie-wraps to secure all wires.

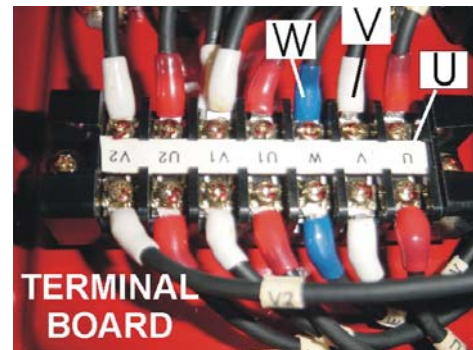


Figure 6. Terminal Board Connections

9. Reinstall the control panel and install the four hex head bolts that secure the control panel to the generator frame. Tighten securely.

## Front Panel Removal (GDP-5000H)

1. Place the generator on a level secure workbench that is free of dirt and debris.
2. Using an 8 mm wrench or socket, remove the hex head bolts (6) that secure the control panel to the generator frame. See Figure 7.

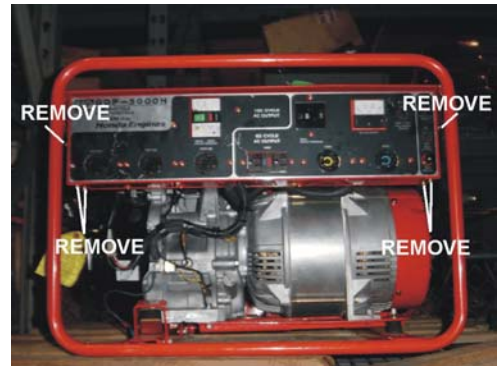


Figure 7. GDP-5000H Control Panel Removal

3. After the six front panel bolts have been removed, pull the control panel forward and tilt downward. To support the control panel, place a wood block underneath as shown in Figure 8.

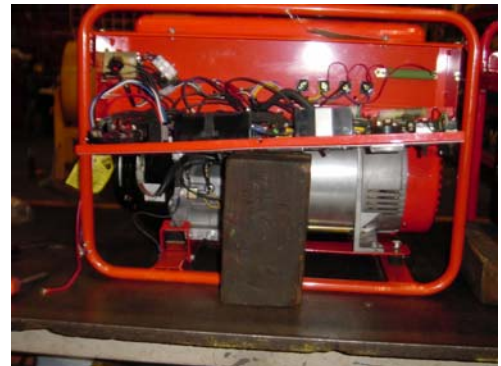


Figure 8. Control Panel Support Block

4. Using a phillips head screwdriver remove the screws securing the terminal board to the generator frame. See Figure 9.



Figure 9. Terminal Board Removal

5. Using the M4 hex nut, lock washer and flat washer, attach the capacitor module to the mounting bracket as shown in Figure 10. Align the hole on the capacitor module with the hole on the mounting bracket.

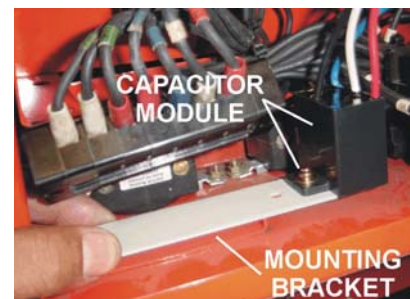


Figure 10. Mounting Bracket



6. Install the mounting bracket underneath the terminal board (Figure 11). Align the holes on the on the mounting bracket with the holes on the terminal board. Insert the screws and associated hardware into the terminal board mounting holes and tighten securely.

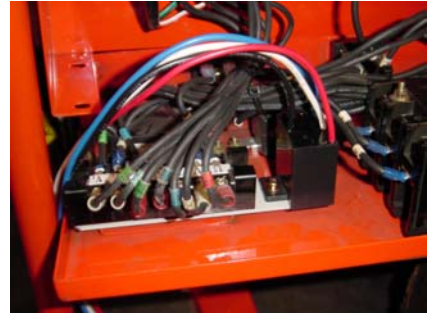


Figure 11. Terminal Board Installation

7. Route the black wire from the capacitor module as necessary, securing with tie-wraps and connect it to the generator GFCI ground terminal as shown in Figure 12.



Figure 12. GFCI Ground

8. Route and connect the **RED** wire on the capacitor module to the **U** position (contact) on the terminal board as shown in Figure 13. Connect the **WHITE** wire to the **V** position (contact) and connect the **BLUE** wire to the **W** position (contact) on the terminal board. Use Tie-wraps to secure all wires.

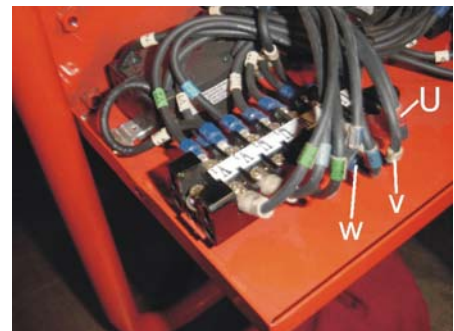


Figure 13. Terminal Board Connections

9. Reinstall the control panel and install the six hex head bolts that secure the control panel to the generator frame. Tighten securely.

## **WARRANTY INFORMATION**

### **Campaign Reference No. 20060608**

Please contact Chris Fairchild or Wendy Sanchez @ 1-800-421-1244 for warranty claim number and warranty form.

**Labor Allowance: Flat Rate to install – 30 minutes.**