

PARTS MANUAL



MODEL HTNS5S-2 RIDE-ON POWER TROWEL (SUBARU EH722 EFI GASOLINE ENGINE)

Revision #0 (03/17/17)

Original Version

To find the latest revision of this
publication, visit our website at:
www.multiquip.com



THIS MANUAL MUST ACCOMPANY THE EQUIPMENT AT ALL TIMES.

PN: 24444

HTNS5S-2

Ride-On Power Trowel

Table Of Contents	2
Explanation of Code in Remarks Column.....	4
Suggested Spare Parts	5

Component Drawings

Nameplate And Decals Assembly	6-7
Pivot Assembly	8-9
Steering Handles Assembly (R/L)	10-11
Steering Assist Control Assembly (R/L)	12-13
Gearbox Assembly (Right).....	14-15
Gearbox Assembly (Left).....	16-17
RH-LH Pitch Control Tower Assembly	18-19
RH-LH Pitch Control Tower Assembly (Contd.)	20-21
Pitch Control Drive Cable Assembly	22-23
Drive Assembly.....	24-25
Engine/Clutch Assembly.....	26-27
Filters/Cooler Assembly.....	28-29
V-Belt Cover/Shield Assembly.....	30-31
Spider Assembly (Right).....	32-33
Spider Assembly (Left)	34-35
Throttle Cable/Foot Pedal Assembly	36-37
Control Panel Assembly	38-39
Fuel Assembly	40-41
Battery Assembly.....	42-43
Spray Assembly	44-45
Light Assembly	46-47
Seat Frame Assembly	48-49
Harness Assembly.....	50-51
EZ-Mover And Lift Handle Assembly.....	52-53
Terms And Conditions Of Sale — Parts	54

NOTICE

Specifications and part numbers are subject to change without notice.

[illegible]

EXPLANATION OF CODE IN REMARKS COLUMN

The following section explains the different symbols and remarks used in the Parts section of this manual. Use the help numbers found on the back page of the manual if there are any questions.

NOTICE

The contents and part numbers listed in the parts section are subject to change **without notice**. Multiquip does not guarantee the availability of the parts listed.

SAMPLE PARTS LIST

NO.	PART NO.	PART NAME	QTY.	REMARKS
1	12345	BOLT	1	INCLUDES ITEMS W/%
2%		WASHER, 1/4 IN.		NOT SOLD SEPARATELY
2%	12347	WASHER, 3/8 IN. ...	1	MQ-45T ONLY
3	12348	HOSE	A/R	MAKE LOCALLY
4	12349	BEARING	1	S/N 2345B AND ABOVE

NO. Column

Unique Symbols — All items with same unique symbol (@, #, +, %, or >) in the number column belong to the same assembly or kit, which is indicated by a note in the “Remarks” column.

Duplicate Item Numbers — Duplicate numbers indicate multiple part numbers, which are in effect for the same general item, such as different size saw blade guards in use or a part that has been updated on newer versions of the same machine.

NOTICE

When ordering a part that has more than one item number listed, check the remarks column for help in determining the proper part to order.

PART NO. Column

Numbers Used — Part numbers can be indicated by a number, a blank entry, or TBD.

TBD (To Be Determined) is generally used to show a part that has not been assigned a formal part number at the time of publication.

A blank entry generally indicates that the item is not sold separately or is not sold by Multiquip. Other entries will be clarified in the “Remarks” Column.

QTY. Column

Numbers Used — Item quantity can be indicated by a number, a blank entry, or A/R.

A/R (As Required) is generally used for hoses or other parts that are sold in bulk and cut to length.

A blank entry generally indicates that the item is not sold separately. Other entries will be clarified in the “Remarks” Column.

REMARKS Column

Some of the most common notes found in the “Remarks” Column are listed below. Other additional notes needed to describe the item can also be shown.

Assembly/Kit — All items on the parts list with the same unique symbol will be included when this item is purchased.

Indicated by:

“INCLUDES ITEMS W/(unique symbol)”

Serial Number Break — Used to list an effective serial number range where a particular part is used.

Indicated by:

“S/N XXXXX AND BELOW”

“S/N XXXX AND ABOVE”

“S/N XXXX TO S/N XXX”

Specific Model Number Use — Indicates that the part is used only with the specific model number or model number variant listed. It can also be used to show a part is NOT used on a specific model or model number variant.

Indicated by:

“XXXXX ONLY”

“NOT USED ON XXXX”

“Make/Obtain Locally” — Indicates that the part can be purchased at any hardware shop or made out of available items. Examples include battery cables, shims, and certain washers and nuts.

“Not Sold Separately” — Indicates that an item cannot be purchased as a separate item and is either part of an assembly/kit that can be purchased, or is not available for sale through Multiquip.

SUGGESTED SPARE PARTS

HTNS5 RIDE-ON POWER TROWEL

1 to 3 units

Qty.	P/N	Description
4.....	2829-1	ARM, TROWEL BLADE (R.S.)
4.....	21495-1	ARM, TROWEL BLADE (L.S.)
4.....	11903-1	LEVER TROWEL ARM (L.S.)
4.....	11904-1	LEVER TROWEL ARM (R.S.)
2.....	10968	THRUST BEARING KIT
4.....	11039	BUSHING, ARM
4.....	11595	SPRING (L.S.)
4.....	11594	SPRING (R.S.)
1.....	24496	BELT, CVT
1.....	24224	CAP, FUEL
1.....	24214	CABLE, THROTTLE, INNER
1.....	12460	CABLE, PITCH CONTROL
1.....	12548	PUMP, SPRAY
1.....	24219	NOZZLE, SPRAY
1.....	24212	CAP, SPRAY TANK
1.....	24459-20	CIRCUIT BREAKER, 12 VDC 20A
1.....	4682	TOGGLE SWITCH

SUBARU ENGINE EH722 EFI

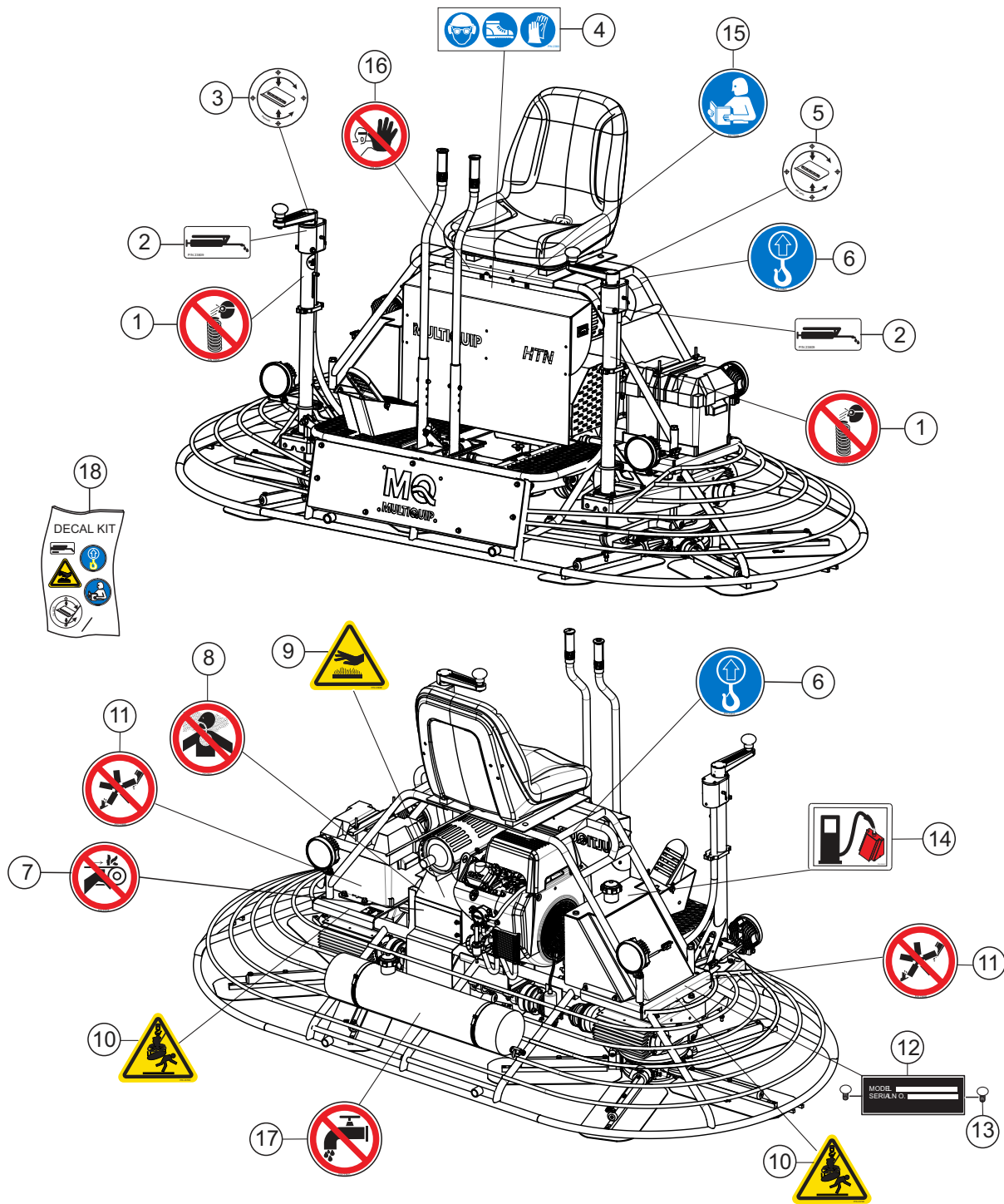
1 to 3 units

Qty.	P/N	Description
3.....	26365012A3	FILTER, FUEL
1.....	20K622010	PUMP, FUEL
3.....	26332610A1	ELEMENT, AIR FILTER
3.....	2486580100	FILTER, OIL
3.....	X650140730	SPARK PLUG

NOTICE

Part numbers on this Suggested Spare Parts list may supersede/replace the part numbers shown in the following parts lists.

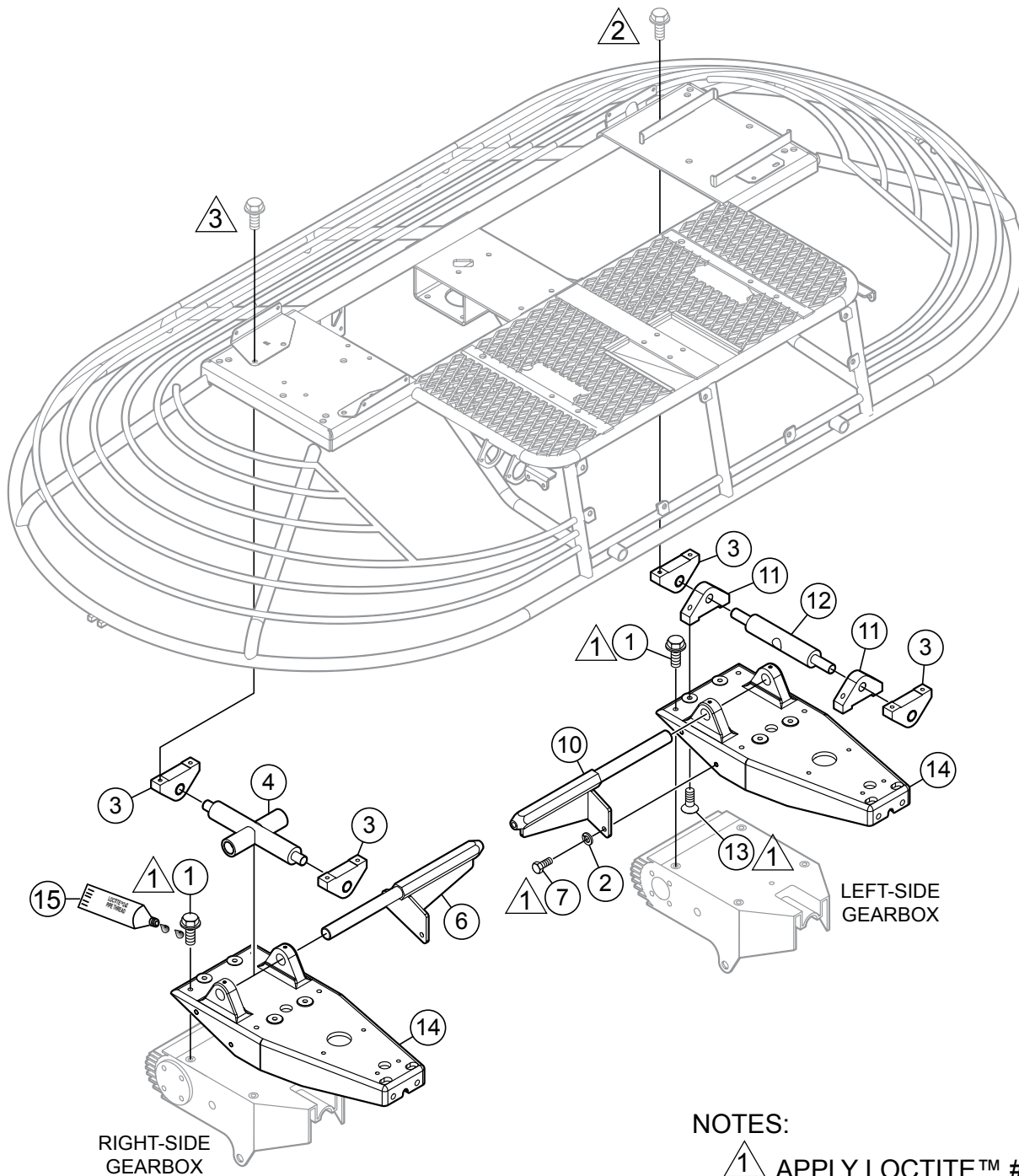
NAMEPLATE AND DECALS ASSY.



NAMEPLATE AND DECALS ASSY.

<u>NO.</u>	<u>PART NO.</u>	<u>PART NAME</u>	<u>QTY.</u>	<u>REMARKS</u>
1#	23804	DECAL ISO, DO NOT DISASSEMBLE HAZARD CYL. 2.00" DIA.	2	
2#	23809	DECAL, LUBRICATION POINT 2.0" X 1.0"	2	
3#	24402	DECAL, PITCH, RH 2.0" DIA.	1	
4#	36099	DECAL ISO, PROTECTIVE CLOTHING 3.50" X 1.13"	1	
5#	24403	DECAL, PITCH, LH 2.00" DIA.	1	
6#	23805	DECAL ISO, LIFT LOCATION 1.0" DIA.	2	
7#	23704	DECAL ISO, GUARD HAZARD 2.00" DIA.	1	
8#	23810	DECAL ISO, INHALATION HAZARD 2.00" DIA.	1	
9#	23808	DECAL ISO, HOT SURFACE HAZARD 2.00" DIA.	1	
10#	23700	DECAL ISO, LIFTING/CRUSH 2.4" X 2.0"	2	
11#	23698	DECAL ISO, ROTATING BLADE HAZARD 2.00" DIA.	2	
12		DECAL, SERIAL PLATE.....	1	CONTACT MQ PARTS DEPT.
13	4014	SCREW, 2-3/16" P-K TYPE U-DRIVE	2	
14#	23812	DECAL, FUEL GASOLINE	1	
15#	23699	DECAL ISO, READ MANUAL 2.00" DIA.	1	
16#	23701	DECAL ISO, ASK FOR TRAINING 2.00" DIA.	1	
17#	23811	DECAL ISO, NO WATER WARNING 2.00" DIA.	1	
18	24348	DECAL, KIT	1	INCLUDES ITEMS W/#

PIVOT ASSY.



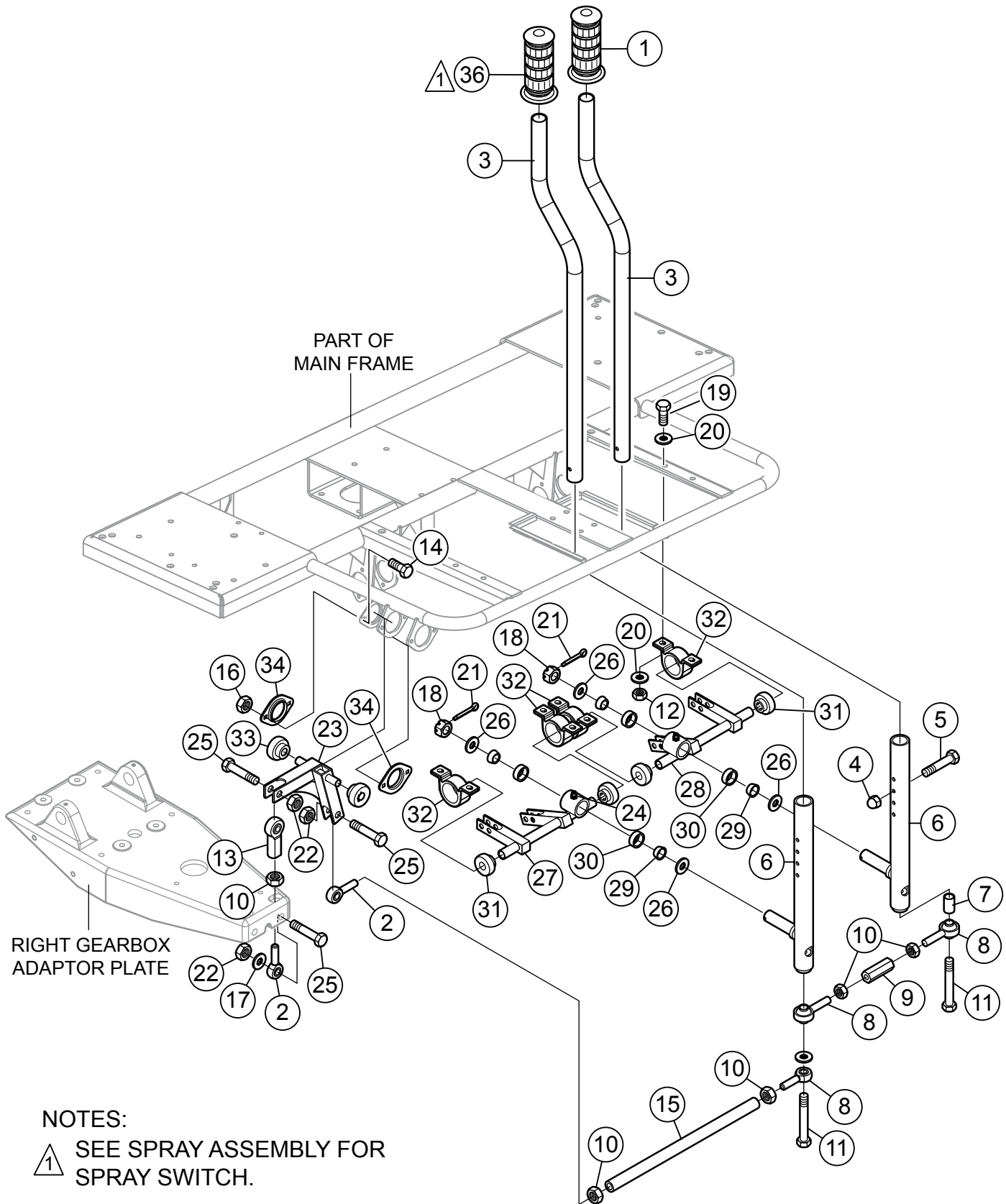
NOTES:

- ① APPLY LOCTITE™ #242
- ② SEE BATTERY ASSY.
- ③ SEE FUEL ASSY.

PIVOT ASSY.

<u>NO.</u>	<u>PART NO.</u>	<u>PART NAME</u>	<u>QTY.</u>	<u>REMARKS</u>
1	22106	SCREW, HHFS 3/8"-16 X 1.25 ZINC.....	11	REPLACES P/N 1023
2	0166 A	WASHER, LOCK, 3/8" MED.	4	
3	2304	ROCKER BLOCK WITH BUSHING	4	
4	2146	PIVOT, DOUBLE ROCKER	1	
6	12412	ARM, PIVOT RIGHT	1	
7	4196	SCREW, HHC 3/8"-16 X 3/4"	4	
10	12413	ARM, PIVOT LEFT	1	
11	2312	ROCKER BLOCK, WITH SET	2	
12	2145	PIVOT JOINT, SINGLE ROCKER	1	
13	1394	SCREW, FHSC 3/8"-16 X 1	4	
14	11248	PLATE, GEARBOX ADAPTOR MACHINED	2	
15	1477	LOCTITE™ #242 BLUE, .05 CC BOTTLE	1	

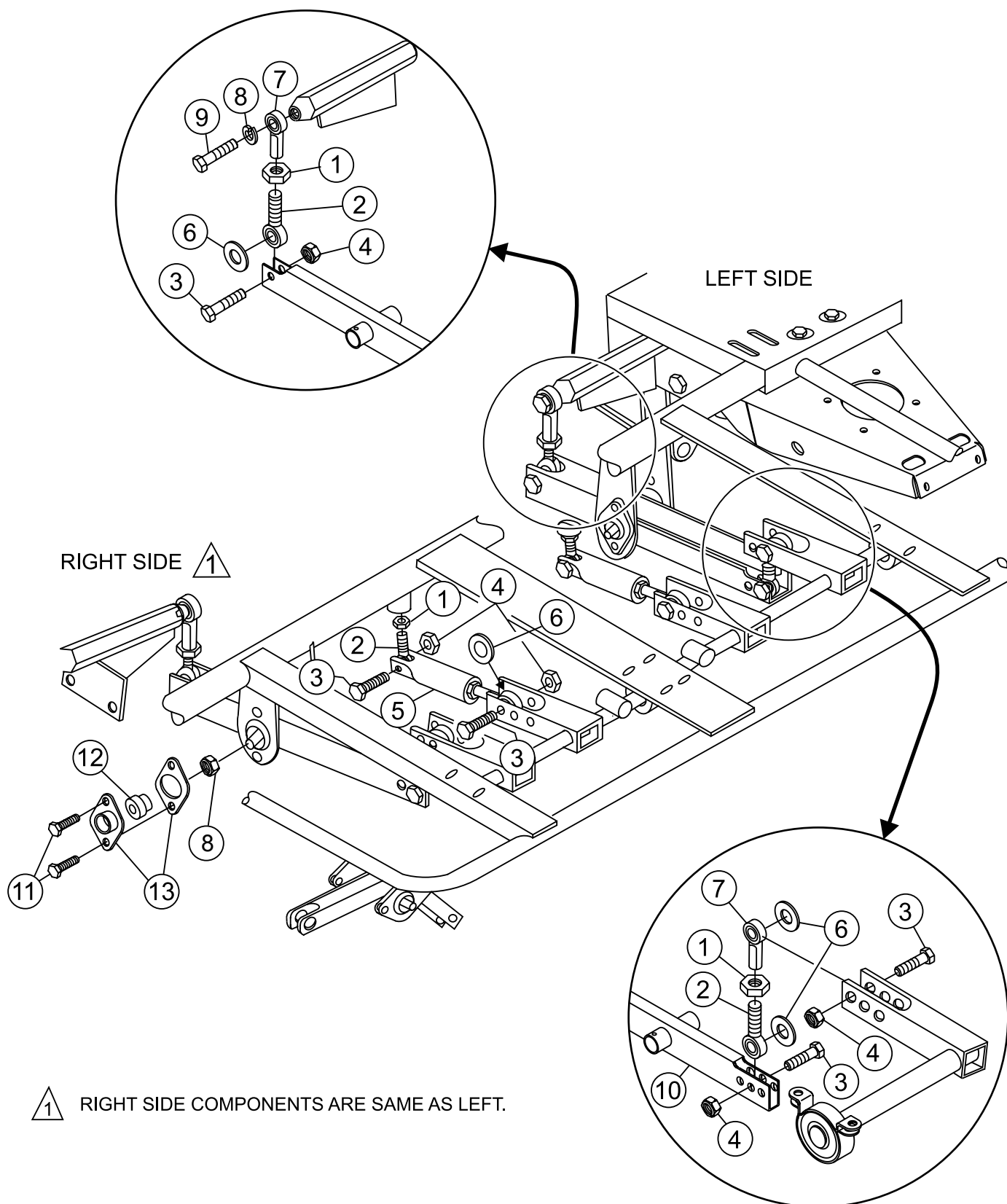
STEERING HANDLES ASSY. (R/L)



STEERING HANDLES ASSY. (R/L)

<u>NO.</u>	<u>PART NO.</u>	<u>PART NAME</u>	<u>QTY.</u>	<u>REMARKS</u>
1	22762	GRIP, HANDLE	1	
2	11142	ROD END, 1/2"-20 MALE RH	2	
3	24552	TUBE, UPPER HANDLE	2	
4	2197	NUT, ACORN, 1/4"-20	2	
5	5277	SCREW HHC 1/4"-20 X 1-1/2"	2	
6	24551	LOWER HANDLE ASSEMBLY	2	
7	22405	SPACER, ROD END	1	
8	21944	ROD END, 1/2"-20 M RH W/CUSTOM BALL	3	
9	22404	NUT, COUPLING 1/2"-20 X 2.0 X .75 HEX	1	
10	11146	NUT, HEX JAM 1/2"-20	5	
11	11145	SCREW, SHC 1/2"-20 X 3	2	
12	10133	NUT, NYLOC 3/8"-16	8	
13	11143	ROD END, 1/2"-20 FEMALE RH	1	
14	0131 A	SCREW HHC 1/4"-20 X 3/4"	4	
15	11205	ROD, L/R MOTION	1	
16	10024	NUT, NYLOC 1/4"-20	4	
17	0447	WASHER, FLAT 1/2" SAE	1	
18	12426	NUT, SLOTTED 3/4"-16	2	
19	1023	SCREW, HHC 3/8"-16 X 1-1/4" GRD 5	8	
20	10136	WASHER, FLAT SAE 3/8	16	
21	2219	PIN, COTTER 1/8" X 1-1/2"	2	
22	10176	NUT, NYLOC 1/2"-13	3	
23	12193	LEVER, L/R CONTROL	1	
24	2621	FITTING, GREASE ZERK STR 1/4"-28	2	
25	6159 A	SCREW, HHC 1/2"-13 X 2	3	
26	8151	WASHER, FLAT SAE 3/4"	4	
27	12374	STEERING CONTROL RS ASSIST	1	
28	12375	STEERING CONTROL LS ASSIST	1	
29	0735	BEARING CUP, TIMKEN #A6157	4	
30	0735 A	BEARING CONE TIMKEN #A6075	4	
31	11149	BEARING	4	
32	11138	BEARING HOUSING, P-BLOCK	4	
33	11150	BEARING	2	
34	11139	HOUSING SET, BEARING FLANGE	2	
36	23666	GRIP, HANDLE	1	

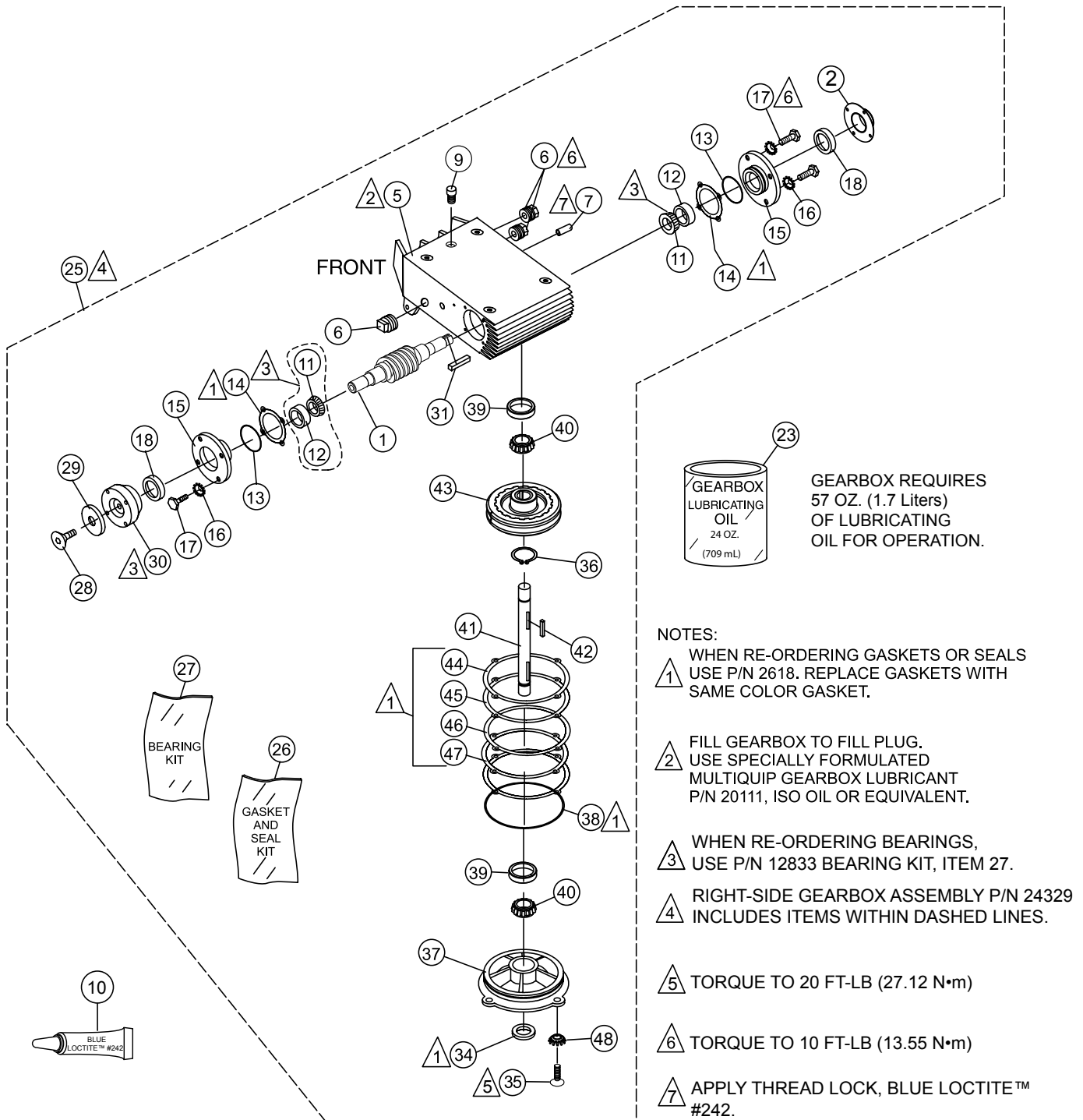
STEERING ASSIST CONTROL ASSY. (R/L)



STEERING ASSIST CONTROL ASSY. (R/L)

<u>NO.</u>	<u>PART NO.</u>	<u>PART NAME</u>	<u>QTY.</u>	<u>REMARKS</u>
1	11146	NUT, HEX JAM 1/2"-20 PLTD.	6	
2	11142	ROD END, 1/2"-20 MALE RH	6	
3	6159 A	SCREW, HHC 1/2"-13 X 2	10	
4	10176	NUT, NYLOC 1/2"-13	10	
5	12200	STEERING ASSIST ASSEMBLY	2	
6	0447	WASHER, FLAT 1/2" SAE	8	
7	11143	ROD END, 1/2"-20 FEMALE RH	4	
8	10024	NUT, NYLOC 1/4"-20	8	
9	22135	SCREW, HHC 1/2"-20 X 1-1/2"	2	
10	11127	LEVER, STEERING CONTROL	2	
11	0131 A	SCREW, HHC 1/4"-20 X 3/4"	8	
12	11150	BEARING	4	
13	11139	HOUSING SET, BEARING FLANGE	4	

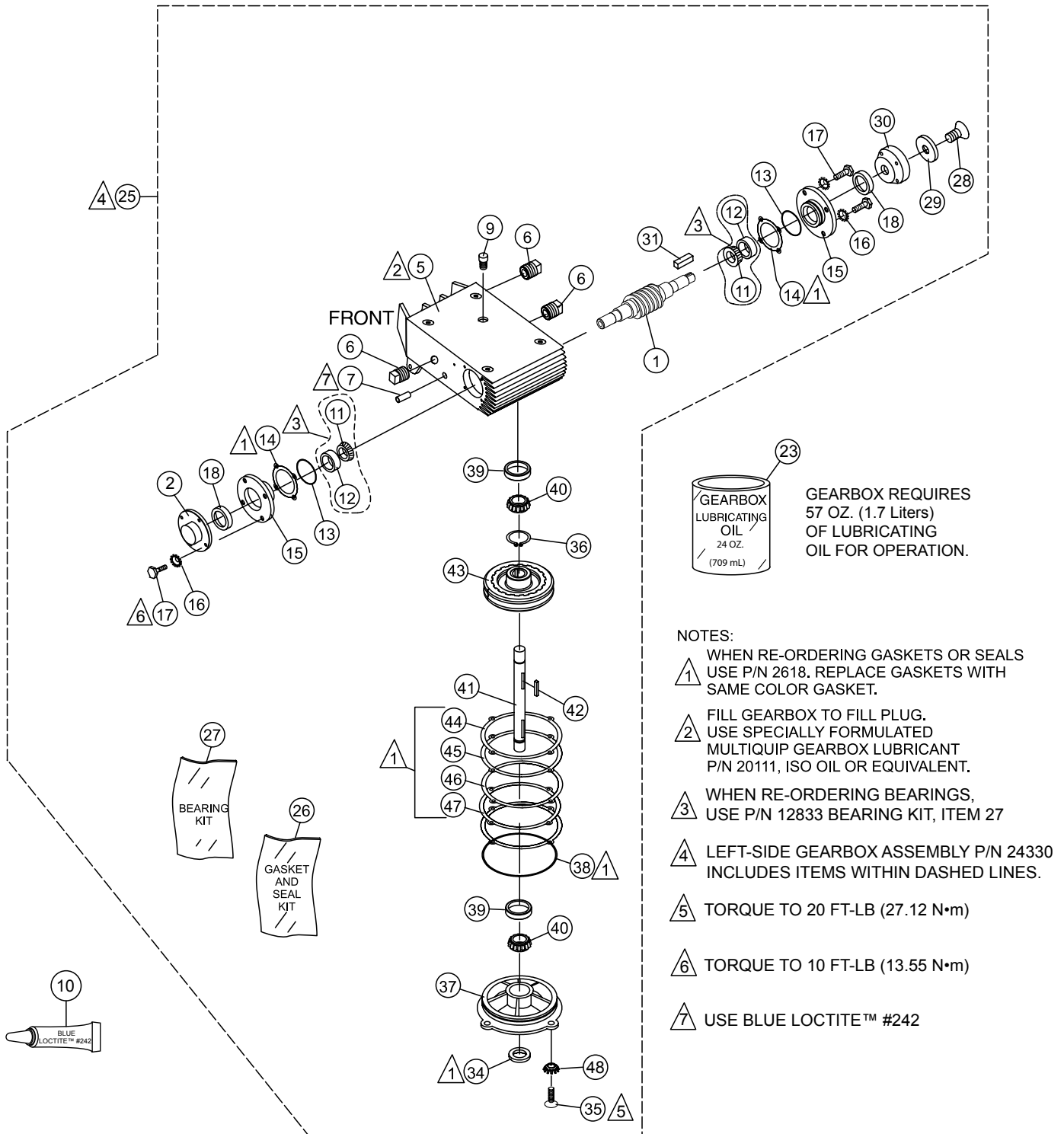
GEARBOX ASSY. (RIGHT)



GEARBOX ASSY. (RIGHT)

NO.	PART NO.	PART NAME	QTY.	REMARKS
1%	24318	WORM SHAFT, RIGHT HAND 2" PD	1	
2%	24374	COVER, GEARBOX	1	
5%	12765	GEAR BOX HD RIDER 1-1/4" SHAFT	1	HOUSING ONLY
6%	0121 A	FITTING, PLUG 3/8" MP SQUARE HEAD	3	
7%	10450	SCREW, SHS 10-32 X 1/4"	2	
9%	1132	VENT, AIR	1	
10	1477	LOCTITE™ BLUE, #242, 0.5 CC BOTTLE	1	
11 @%	9045	BEARING, CONE TIMKEN #1986	2	
12 @%	0232 A	BEARING, CUP TIMKEN #1932	2	
13+%	2309	O-RING, 2-13/16" VINTON	2	
14+%		GASKET, RED	1	SOLD AS KIT ONLY
15%	9047	FLANGE, COUNTERSHAFT	2	REPLACES P/N 2307
16%	10031	WASHER, EXT. SHKP, 1/4	8	
17%	2295	SCREW, HHC 1/4"-20 X 7/8"	8	
18%	12909	SEAL, OIL, NATIONAL #471689V	2	
23%	60073	OIL, GEAR LUBE, ISO GRADE 460	3	
25	24329	GEAR BOX ASSY., COMPLETE RS	1	INCLUDES ITEMS W/%
26%	2618	GASKET KIT	1	INCLUDES ITEMS W/+
27%	12833	BEARING KIT	1	INCLUDES ITEMS W/@
28%	1313	SCREW, FHSC 3/8"-24 X 3/4"	1	
29%	9120	RETAINER, DRIVEN PULLEY	1	
30%	2048	COUPLER - 7/8" ID.	1	
31%	2323	KEY, 1/4" X 1/4" X 13/16"	1	
34+%	12769	SEAL, 1-1/4" DIA. NAT # 471766V	1	
35%	1146	SCREW, FHS 5/16"-18 X 1"	4	
36%	12770	RING, SNAP	1	
37%	12766	COVER, HD GEARBOX 1-1/4" SHAFT	1	
38+%	9038	O-RING, A - 264 VITON	1	
39%	12767	BEARING, CUP, TIMKEN #15245	2	
40%	12768	BEARING, CONE TIMKEN #15126	2	
41%	22349	SHAFT, OUTPUT Ø1.251 X 9.00	1	
42%	9192	KEY, SQ RN .312 X 2.00	1	
43%	12772	GEAR, WORM RH. HT 1-1/4"	1	
44+%		GASKET, RED	1	SOLD AS KIT ONLY
45+%		GASKET, GREEN	1	SOLD AS KIT ONLY
46+%		GASKET, BLUE	1	SOLD AS KIT ONLY
47+%		GASKET, BROWN	1	SOLD AS KIT ONLY
48%	10235	WASHER, LOCK 5/16"	4	

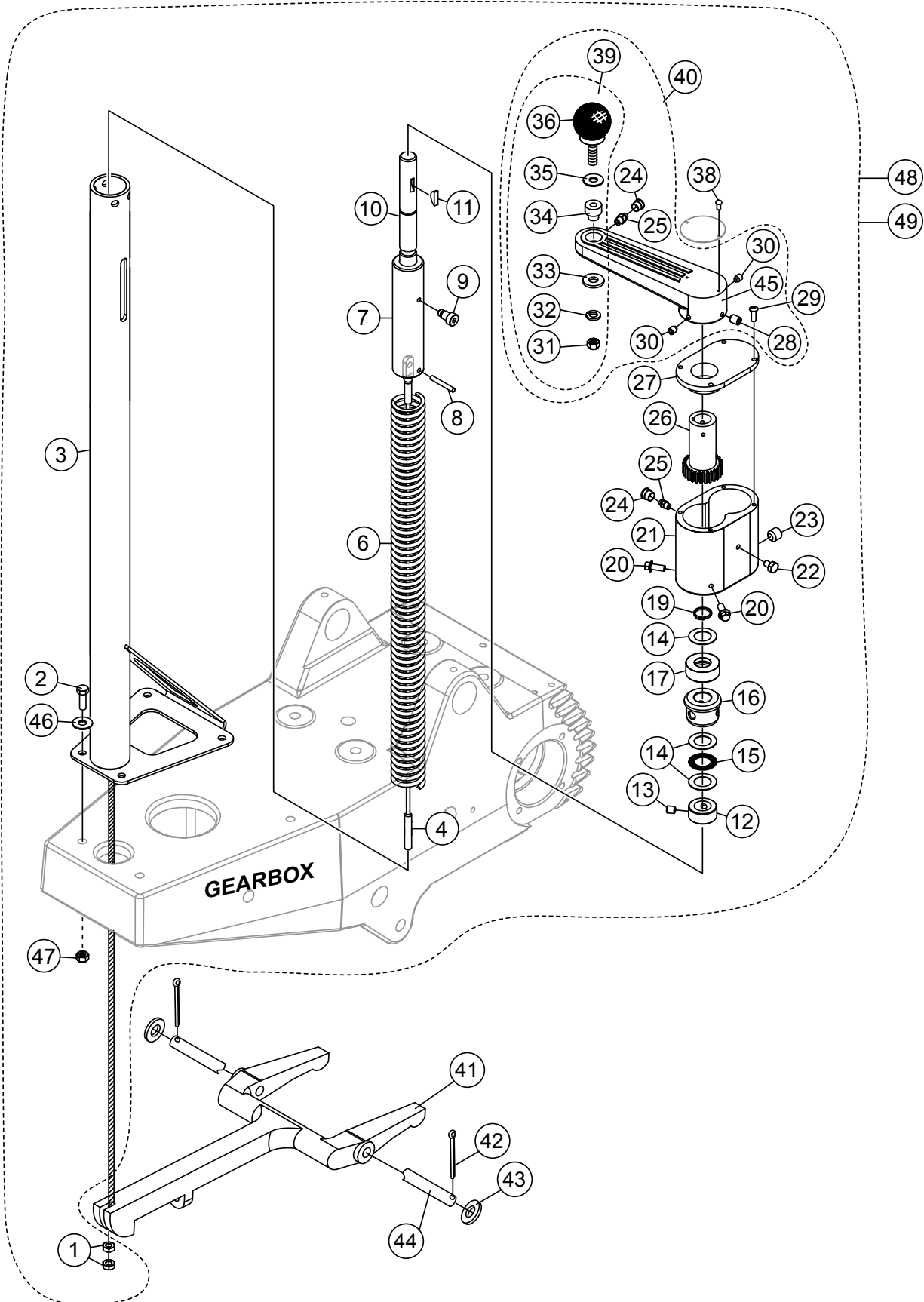
GEARBOX ASSY. (LEFT)



GEARBOX ASSY. (LEFT)

NO.	PART NO.	PART NAME	QTY.	REMARKS
1%	24317	WORM SHAFT, LEFT HAND 2" PD	1	
2%	24374	COVER, GEARBOX	1	
5%	12765	GEAR BOX HD RIDER 1-1/4" SHAFT	1	HOUSING ONLY
6%	0121 A	FITTING, PLUG 3/8" MP SQUARE HEAD	3	
7%	10450	SCREW, SHS 10-32 X 1/4"	2	
8%	12907	LEFT HAND WORM	1	
9%	1132	VENT, AIR	1	
10	1477	LOCTITE™ BLUE, #242, 0.5 CC BOTTLE	1	
11 @%	9045	BEARING, CONE TIMKEN #1986	2	
12 @%	0232 A	BEARING, CUP, TIMKEN #1932	2	
13+%	2309	O-RING, 2-13/16" VINTON	2	
14+%		GASKET, RED	1	SOLD AS KIT ONLY
15%	9047	FLANGE, COUNTERSHAFT	2	REPLACES P/N 2307
16%	10031	WASHER, EXT. SHKP 1/4"	8	
17%	2295	SCREW, HHC 1/4"-20 X 7/8"	8	
18%	12909	SEAL, OIL, NATIONAL #471689V	2	
23%	60073	OIL, GEAR LUBE, ISO GRADE 460	3	
25	24330	GEAR BOX ASSY., COMPLETE LS	1	INCLUDES ITEMS W/%
26	2618	GASKET KIT	1	INCLUDES ITEMS W/+
27%	12833	BEARING KIT	1	INCLUDES ITEMS W/@
28%	1313	SCREW, FHSC 3/8"-24 X 3/4"	1	
29%	9120	RETAINER, DRIVEN PULLEY	1	
30%	2048	COUPLER - 7/8" ID.	1	
31%	2323	KEY, 1/4" SQ. X 13/16"	1	
32%	10450	SCREW, SHS 10-32 X 1/4"	1	
33%	1139	KEY, WOODRUFF #21 HARDENED	1	
34+%	12769	SEAL, 1-1/4" DIA. NAT # 471766V	1	
35%	1146	SCREW, FHS 5/16"-18 X 3/4"	4	
36%	12770	RING, SNAP	1	
37%	12766	COVER, HD GEARBOX, 1-1/4" SHAFT	1	
38+%	9038	O-RING, SIZE 2-264 VITON	1	
39%	12767	BEARING, CUP, TIMKEN #15245	2	
40%	12768	BEARING, CONE, TIMKEN #15126	2	
41%	22349	SHAFT, OUTPUT Ø1.251 X 9.00	1	
42%	9192	KEY, SQ RN .312 X 2.00	1	
43%	12771	GEAR, LH WORM GEAR, HT 1-1/4"	1	
44+%		GASKET, RED	1	SOLD AS KIT ONLY
45+%		GASKET, GREEN	1	SOLD AS KIT ONLY
46+%		GASKET, BLUE	1	SOLD AS KIT ONLY
47+%		GASKET, BROWN	1	SOLD AS KIT ONLY
48%	10235	WASHER, LOCK 5/16"	4	

RH-LH PITCH CONTROL TOWER ASSY.



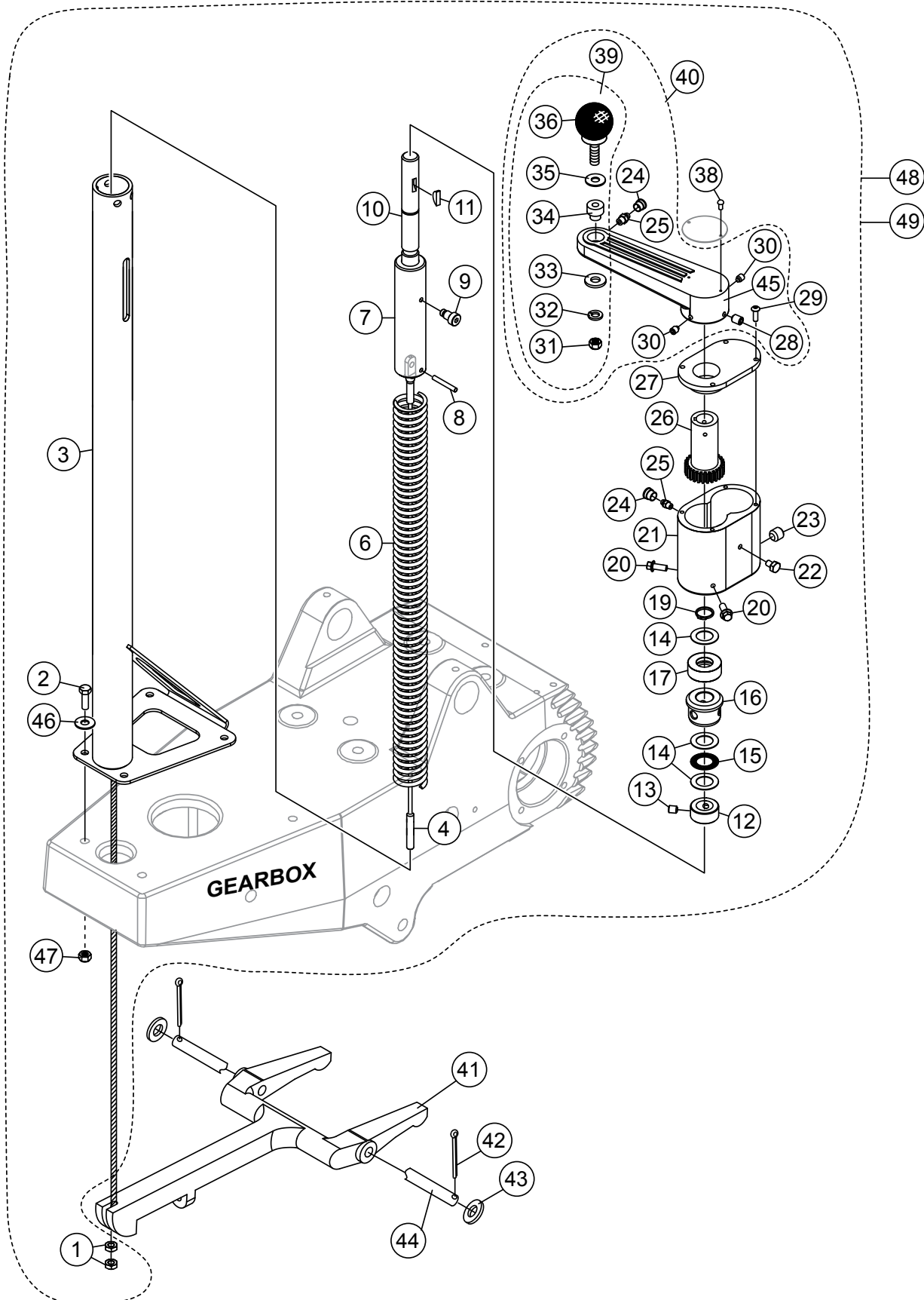
RH-LH PITCH CONTROL TOWER ASSY.

NO.	PART NO.	PART NAME	QTY.	REMARKS
1\$#	1116	NUT, BRASS JAM 5/16"-18	2	
2\$#	36720	SCREW, HHF 5/16"-18 X 3/4" GRD 5	4	
3\$	24442	TOWER, PITCH CONTROL	1.....	RIGHT-SIDE
3#	24439	TOWER, PITCH CONTROL	1.....	LEFT-SIDE
4\$#	12460	CABLE, PITCH CONTROL	1	
6\$#	2156	SPRING, HANDLE BALANCE COIL	1	
7\$	10721	SLIDE BLOCK, PITCH CONTROL	1.....	RIGHT-SIDE
7#	10722	SLIDE BLOCK, PITCH CONTROL	1.....	LEFT-SIDE
8\$#	1729	PIN, ROLL 3/16" X 1-1/4"	1	
9\$#	24112	PIN, ADJUSTMENT	1	
10\$	24113	SHAFT, PITCH CONTROL	1.....	RIGHT-SIDE
10#	24114	SHAFT, PITCH CONTROL	1.....	LEFT-SIDE
11\$#	0627	KEY, 3/16" X 1-1/4"	1	
12\$#	24109	COLLAR, SET	1	
13\$#	24115	SCREW, SET, 5/16"-18 X 1/4"	2	
14\$#	2170	BEARING, RACE	2	
15\$#	2169	BEARING, THRUST	1	
16\$#	1612	BEARING, TROWEL CONTROL	1	
17\$#	0281	BEARING, THRUST	1	
19\$#	10512	RING, SNAP	1	
20\$#	22021	SCREW, HHFS M8-1.25 X 20 MM, GRD 10.9	2	
21\$#	24107	HOUSING, PITCH CONTROL	1	
22\$#	22021	SCREW, HHFS M8-1.25 X 20 MM, GRD 10.9	1	
23\$#	17109	SCREW, SHSCU M8-1.25 X 8 MM	1	
24\$#%	24227	CAP, GREASE ZERK	2	
25\$#%	2621	FITTING, GREASE ZERK STR.	2	
25%\$#	24227	CAP, GREASE ZERK	2	
26\$#	24105	GEAR, DRIVE PITCH CONTROL	1	
27\$#	2649	COVER, PITCH CONTROL HOUSING	1	
28\$#%	0185	SCREW, SHS 3/8"-16 X 3/8"	1	
29\$#	9191	SCREW, BHSC M5-0.8 X 16 MM	4	
30\$#%	24091	SCREW, SHS 1/4"-20 X 5/16"	2	
31\$#%@	24093	HEX NUT, M8 X 1-1/4" NYLOC	1	
32%@	24096	WASHER, M8 SPLIT LOCK	1	
33%@	13351	WASHER, FLAT 3/8"	1	
34%@	24094	SPACER	1	
35%@	10136	WASHER, FLAT SAE 3/8"	1	
36%@	24095	KNOB W/ BOLT	1	
38\$#	4014	SCREW, #2, 3/16" P-K TYPE U-DRIVE	4	
39%\$#	24092	KNOB, KIT	1.....	INCLUDES ITEMS W/@

NOTICE

Indicated quantities are for one pitch tower. If ordering for two pitch towers, double quantity.

RH-LH PITCH CONTROL TOWER ASSY. (CONTD.)



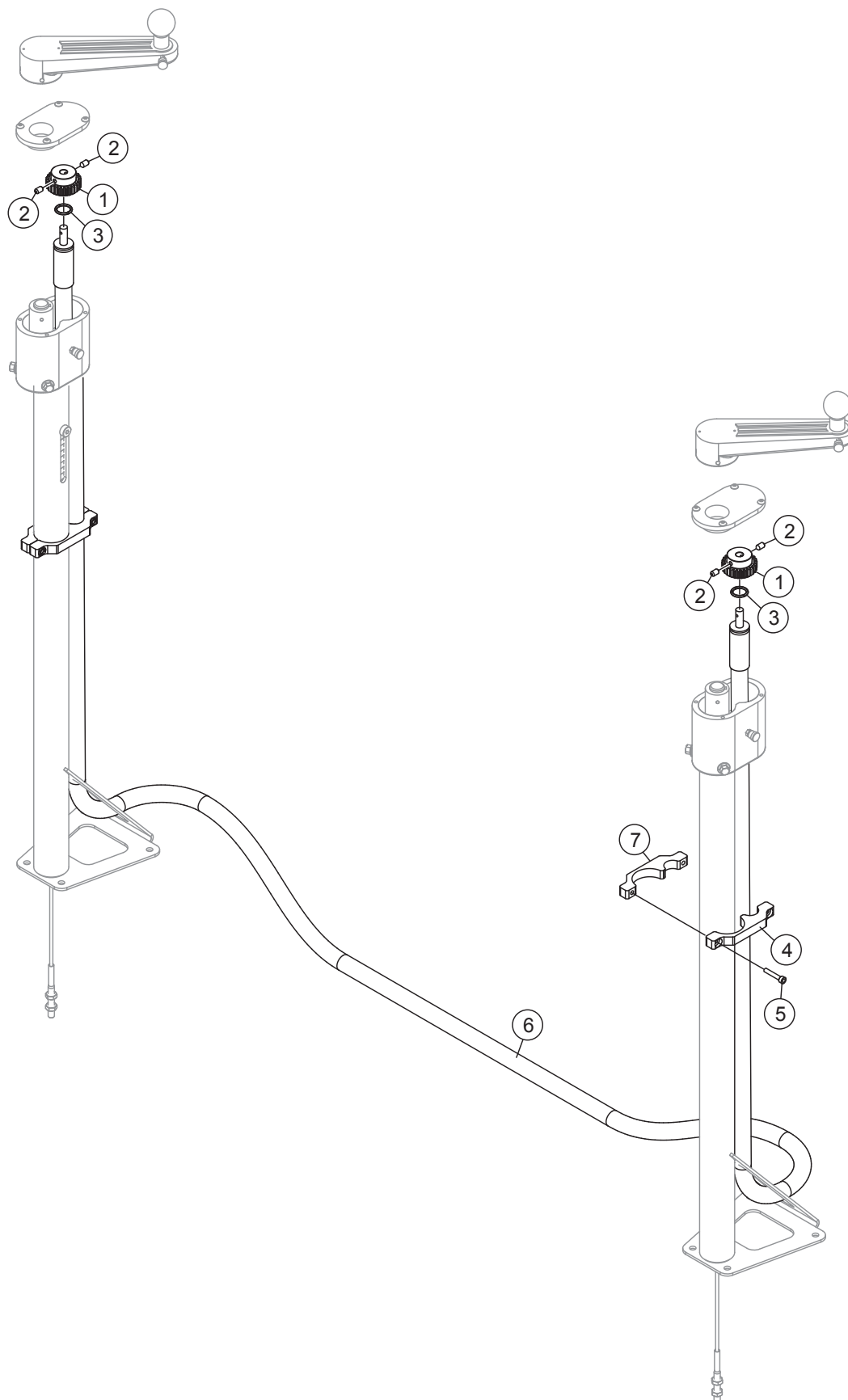
RH-LH PITCH CONTROL TOWER ASSY. (CONTD.)

<u>NO.</u>	<u>PART NO.</u>	<u>PART NAME</u>	<u>QTY.</u>	<u>REMARKS</u>
40\$#	24090	LEVER ASSY., TROWEL ADJUSTMENT	1.....	INCLUDES ITEMS W/%
41	12100	YOKE PITCH CONTROL	2	
42	0683	PIN, COTTER 3/32" DIA. X 3/4"	4	
43	10136	WASHER, FLAT SAE 3/8"	2	
44	9028	PIN, YOKE	2	
45\$#	24406	LEVER, TROWEL ADJUST	1	
46\$#	0300 B	WASHER, FLAT SAE 5/16"	4	
47\$#	5283	NUT, NYLOC 5/16"-18	4	
48	24362	TOWER ASSY. PITCH CONTROL, RH	1.....	INCLUDES ITEMS W/\$
49	24363	TOWER ASSY. PITCH CONTROL, LH	1.....	INCLUDES ITEMS W/#

NOTICE

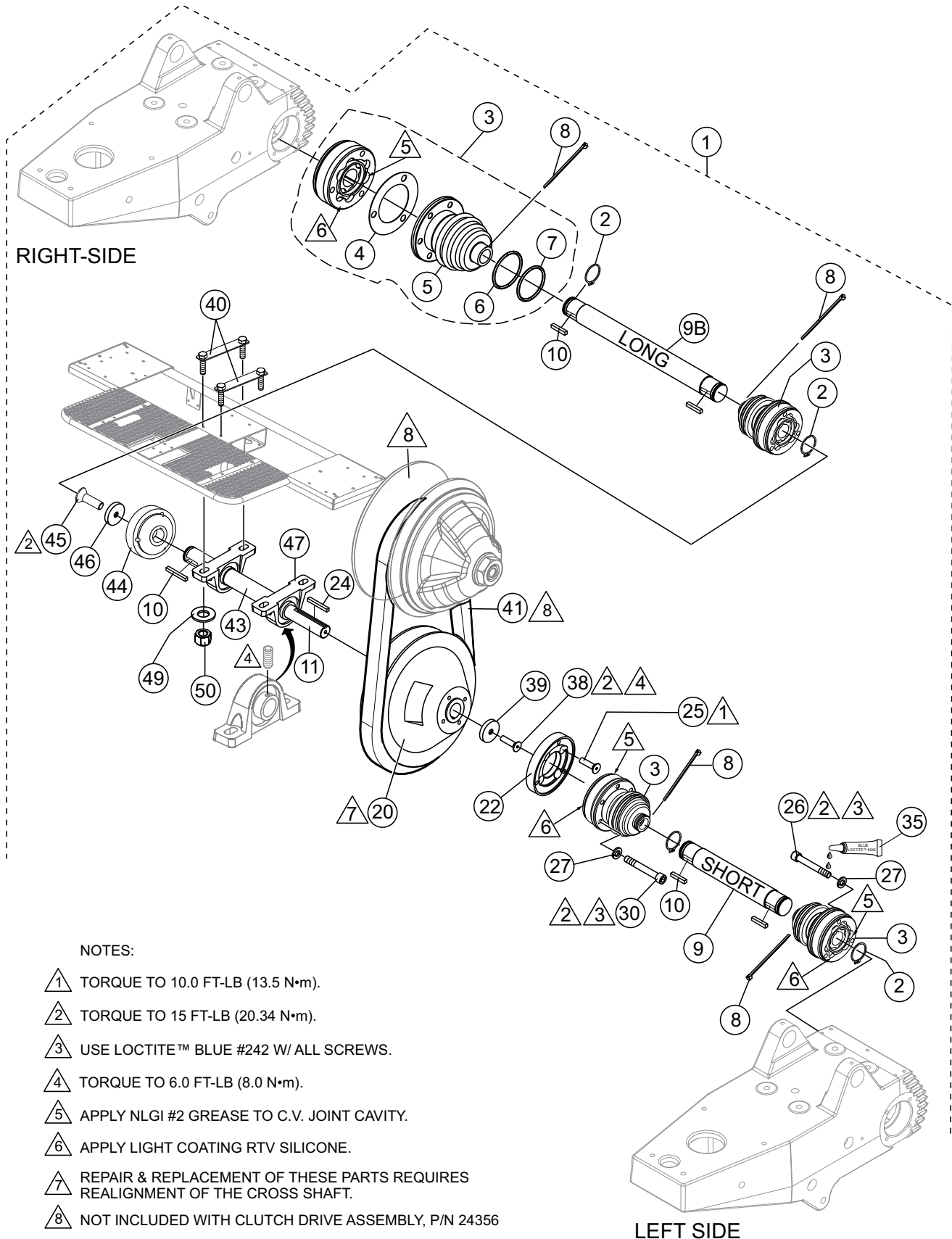
Indicated quantities are for one pitch control drive assembly. If ordering for two pitch control drives, double the quantity.

PITCH CONTROL DRIVE CABLE ASSY.



PITCH CONTROL DRIVE CABLE ASSY.

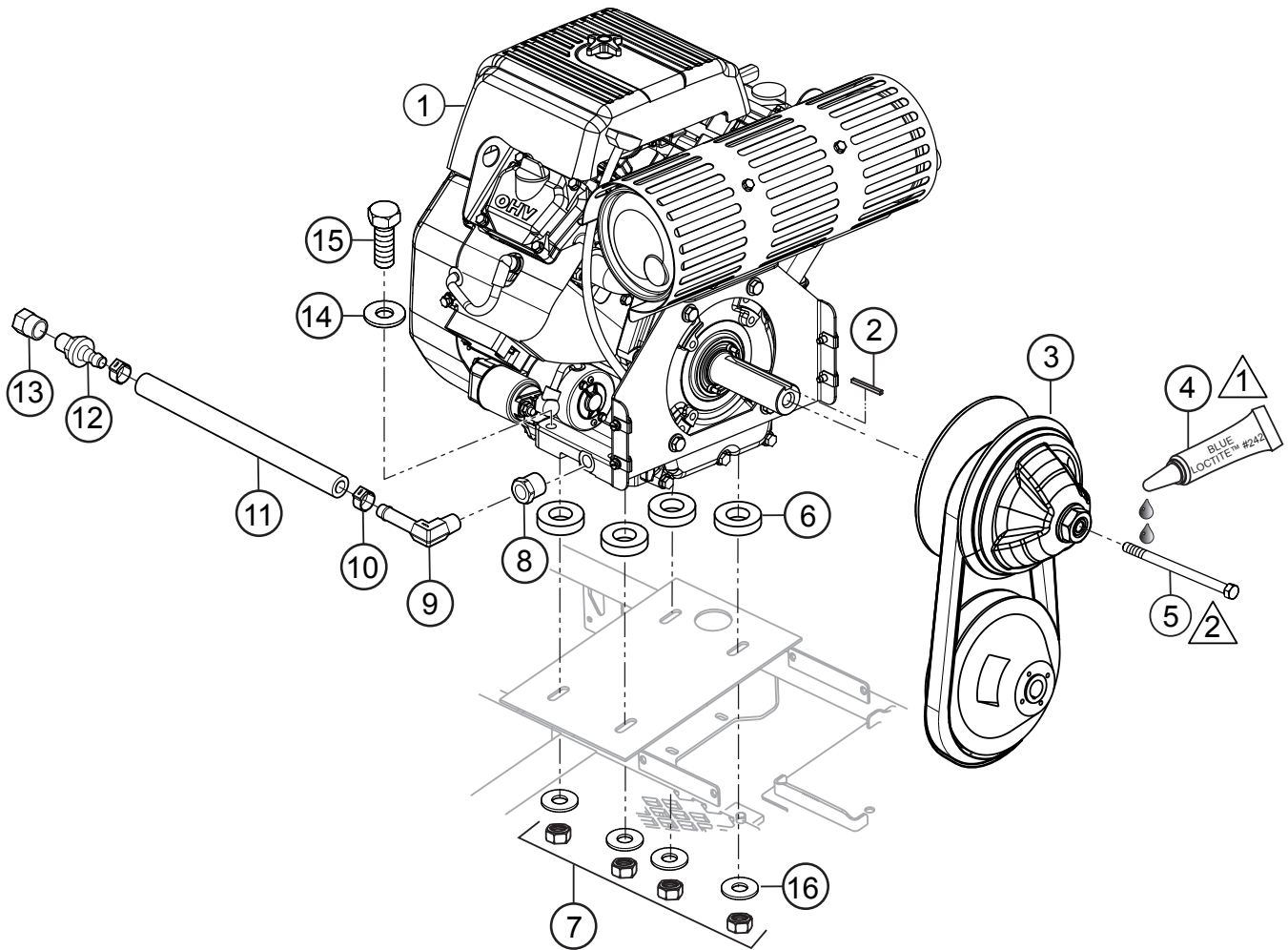
<u>NO.</u>	<u>PART NO.</u>	<u>PART NAME</u>	<u>QTY.</u>	<u>REMARKS</u>
1	23036	GEAR, PITCH CONTROL	2	
2	24180	SCREW, SHS M5-0.8 X 10 MM	4	
3	9196	O-RING	2	
4	24129	CLAMP, PITCH CABLE	2	
5	37325	SCREW, SHC M5-0.8 X 30 MM	4	
6	24258	DRIVE CABLE, PITCH CONTROL	1	
7	24130	CLAMP, PITCH CABLE, THREADED	2	



DRIVE ASSY.

<u>NO.</u>	<u>PART NO.</u>	<u>PART NAME</u>	<u>QTY.</u>	<u>REMARKS</u>
1	24356	DRIVE ASSY., LOWER.....	1.....	INCLUDES ITEMS W/\$
2\$	2090	SNAP RING	4	
3\$	24127	C.V. JOINT, COUPLING W/ BOOT.....	4.....	INCLUDES ITEMS W/%
4%\$	24235	GASKET, C.V. JOINT BOOT RIDERS	4	
5%\$	24256	BOOT ASSY., C.V. JOINT RIDERS.....	4.....	INCLUDES ITEMS W/#
6#%\$	22219	O-RING, 2.25 DIA X .125	4	
7#%\$	22220	O-RING, 1.875 DIA. X .125	4	
8\$	1662	TIE, CABLE TY-RAP BLACK	4	
9\$	24465	SHAFT, C.V. JOINT 7.60 LONG, LH	1	
9B\$	24464	SHAFT, C.V. JOINT 10.75 LONG, RH	1	
10\$	10909	KEY, 3/16" SQ X 11/16"	5	
11\$	24539	DRIVE, CROSS SHAFT ASSY.	1	
20\$	24481	CLUTCH, DRIVEN	1	
22\$	24538	PLATE, ADAPTOR, CLUTCH-TO-CV	1	
24\$	22632	KEY, .188 X .250 X 1.813 STEEL	1	
25\$	24044	SCREW, SHC M8-1.25 X 20 MM	4	
26\$	2186	SCREW, SHC 5/16"-16 X 2-1/4"	9	
27\$	0161 C	WASHER, LOCK, 5/16" MED.	12	
30\$	0243	SCREW, SHC 5/16"-18 X 1-3/4"	3	
35	1477	LOCTITE™ BLUE, #242, 0.5 CC BOTTLE	1	
38\$	9092	SCREW, FHCS 5/16"-18 X 1-1/4"	1	
39\$	23484	RETAINER, DRIVEN CLUTCH	1	
40\$	20186	PLATE W/A, P. BLOCK BEARING MOUNT	2	
41	24496	BELT, CV TECH	1	
43\$	23634	SPACER, Ø1.25 X Ø1.01 X 4.82	1	
44\$	24124	COUPLER, CV SHAFT DRIVE, RIDER	1	
45\$	1146	SCREW, FHSC 5/16"-18 X 1, NYLOC	1	
46\$	2037	SPACER, CSK 1.375 DIA. X .328 DIA. X .250	1	
47\$	24376	BEARING, P-BLOCK 1.0"	2	
49\$	13351	WASHER, FLAT 3/8"	4	
50\$	10133	NUT, NYLOC 3/8"-16	4	

ENGINE/CLUTCH ASSY.



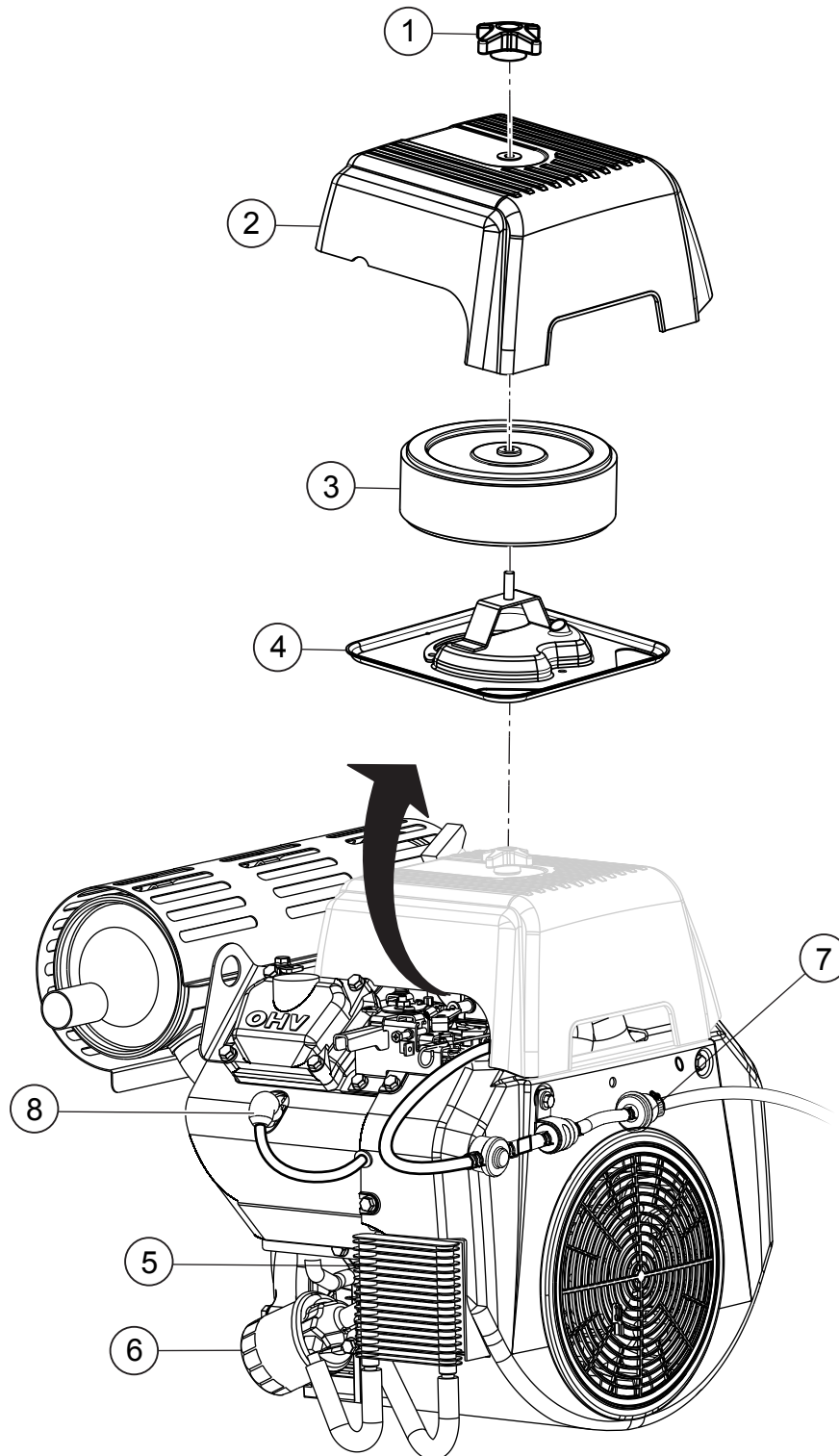
1 USE BLUE LOCTITE™ #242.

2 TORQUE TO 45 FT-LB (61 N•m).

ENGINE/CLUTCH ASSY.

<u>NO.</u>	<u>PART NO.</u>	<u>PART NAME</u>	<u>QTY.</u>	<u>REMARKS</u>
1	24466-E	ENGINE, SUBARU EH722	1	
2	22632	KEY, STEEL .188 X .250 X 2.063	1	
3	24480	CLUTCH, CVT UPPER	1	
4	1477	LOCTITE™ #242 BLUE, 0.5 CC BOTTLE	1	
5	24535	SCREW, HHC 5/8"-18 X 1.85 LG	1	
6	1897	SPACER, 3/4" X 3/8" X 3/16"	4	
7	5283	NUT, NYLOC 5/16"-18	4	
8	19317	FITTING, BRASS BUSHING 1/4"FP X 3/8" MP	1	
9	370628	FITTING, BRASS 45° 6BARB X 1/4" MP	1	
10	22067	CLAMP, STEPLESS EAR 1/4"	2	
11	60045	HOSE, 3/8" ID. PUSHLOCK 250 PSI	1	
12	12237	FITTING, 6MBARB X 6MJ	1	
13	12236	FITTING, CAP 6FJHEX	1	
14	933241	WASHER, FLAT SAE 5/16" GRD 9	4	
15	0300 A	SCREW, HHC 5/16"-18 X 2"	4	
16	0300 B	WASHER, FLAT SAE 5/16"	4	

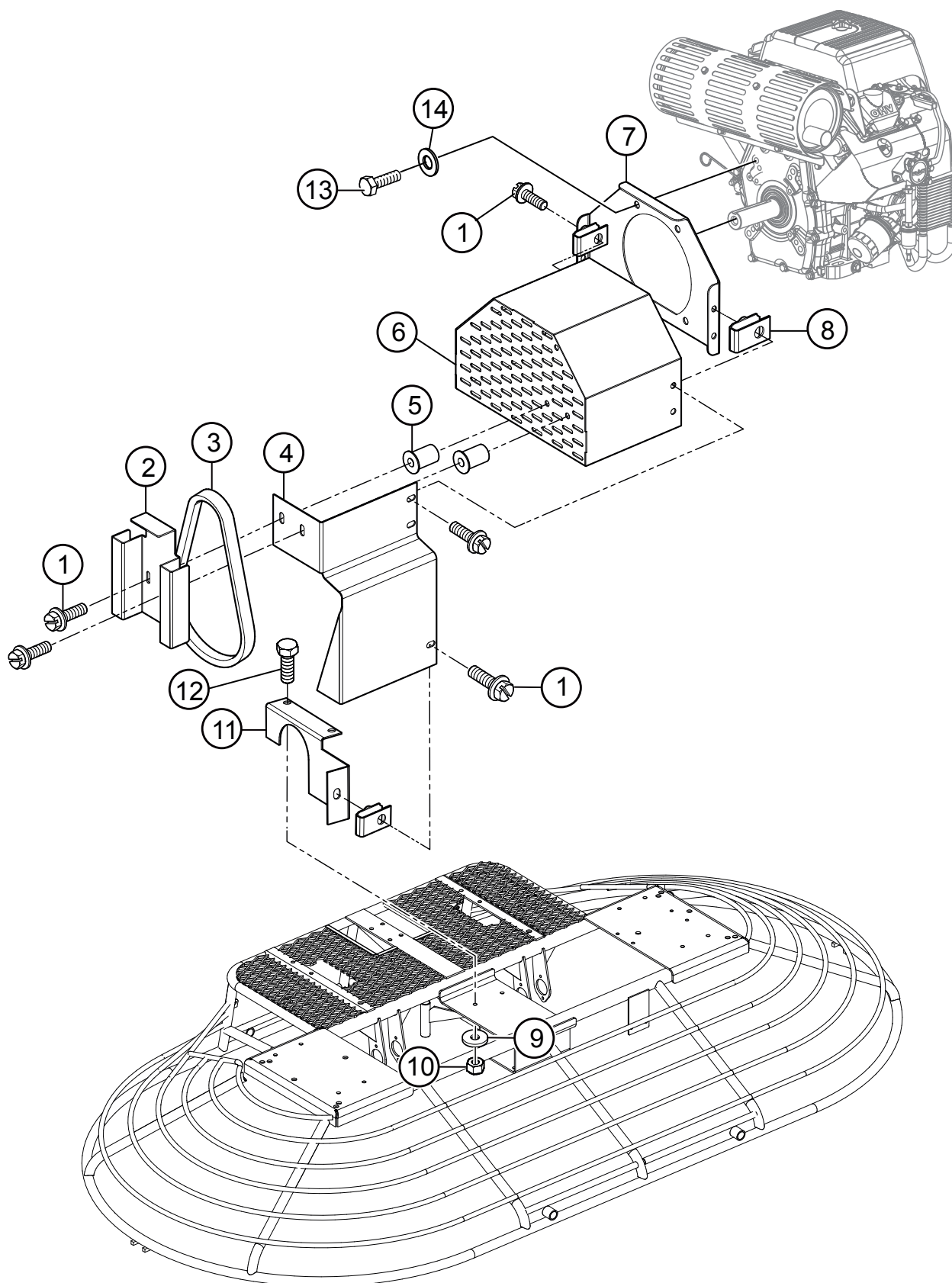
FILTERS/COOLER ASSY.



FILTERS/COOLER ASSY.

<u>NO.</u>	<u>PART NO.</u>	<u>PART NAME</u>	<u>QTY.</u>	<u>REMARKS</u>
1	2633264001	WING NUT	1	
2	2633263003	CLEANER COVER	1	
3	26332610A1	ELEMENT, AIR FILTER	1	
4	28032626A1	CLEANER BASE	1	
5	28065001C1	OIL COOLER	1	
6	2486580100	FILTER, OIL	1	
7	26365012A3	FILTER, FUEL	1	
8	X650140730	SPARK PLUG	2	

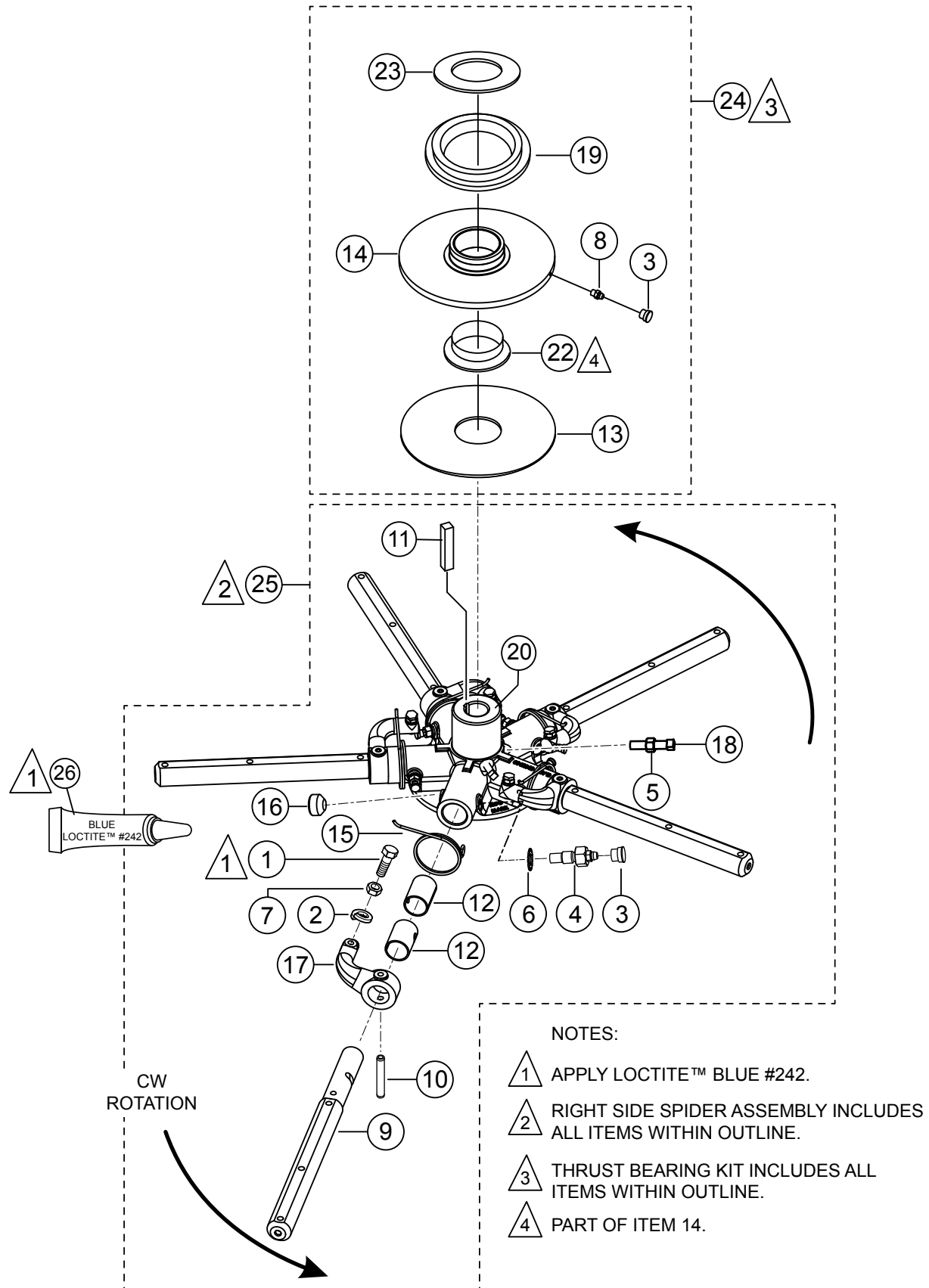
V-BELT COVER/SHIELD ASSY.



V-BELT COVER/SHIELD ASSY.

<u>NO.</u>	<u>PART NO.</u>	<u>PART NAME</u>	<u>QTY.</u>	<u>REMARKS</u>
1	11819	SCREW, HEX WASHER SLOTTED 1/4"-20 X 3/4"	7	
2	24553	HOLDER, SPARE BELT	1	
3	24496	BELT, CVT	1	
4	24555	GUARD, CLUTCH	1	
5	19266	NUT, BLIND 1/4"-20 X .027-.165	2	
6	24479	BELT GUARD	1	
7	24476	PLATE, MOUNTING BELT COVER	1	
8	11534	NUT, "U" TYPE, 1/4"-20	5	
9	13351	WASHER, FLAT 3/8"	2	
10	10133	NUT, NYLOC 3/8"-16	2	
11	24556	GUARD, SHAFT	1	
12	20187	SCREW, HHC 3/8"-16 X 1-1/2" SS	2	
13	0205	SCREW, HHC 3/8"-16 X 1.0	4	
14	10136	WASHER, FLAT SAE 3/8"	4	

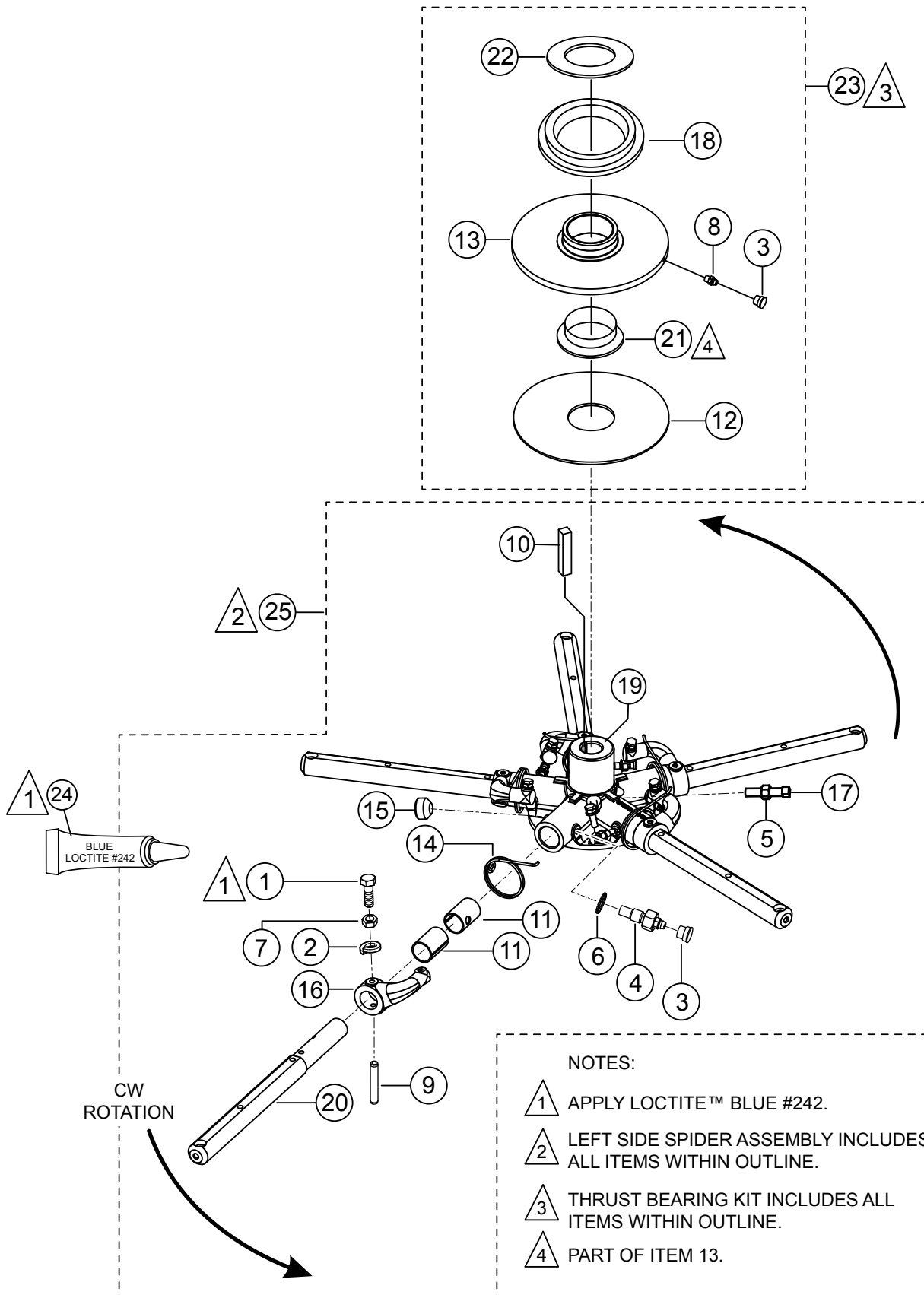
SPIDER ASSY. (RIGHT)



SPIDER ASSY. (RIGHT)

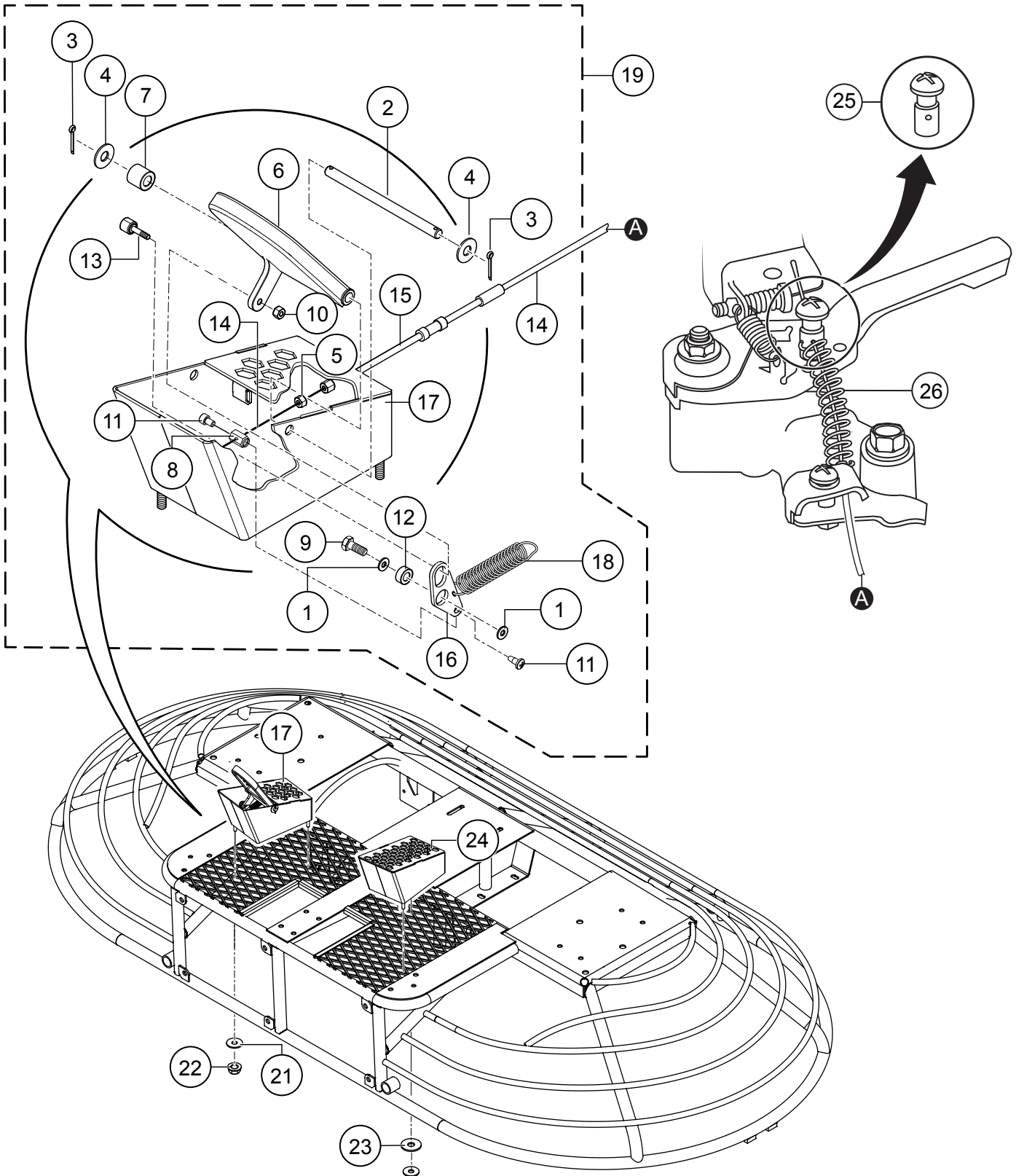
<u>NO.</u>	<u>PART NO.</u>	<u>PART NAME</u>	<u>QTY.</u>	<u>REMARKS</u>
1#	0164 B	SCREW,TROWEL ADJUSTMENT 3/8"-16	5	
2#	0166 A	WASHER, LOCK, 3/8" MED.	5	
3\$#	1162 A	CAP, GREASE ZERK, #2 YELLOW	6	
4#	1322	SCREW ASSY., TROWEL ARM RETAINING	5	
5	1456	NUT, HEX FINISH 3/8"-16	2	
6#	1875	WASHER, INT. SHKP, 3/8"	5	
7#	1876	NUT, HEX JAM 3/8"-16	5	
8\$	2621	FITTING, GREASE ZERK STR. 1/4"-28	1	
9#	2829-1	ARM, TROWEL, HD EXTENDED	5	
10#	9006	PIN, ROLL 5/16" X 2 NP	5	
11	9193	KEY, SQ RN .312 X 3.00	1	
12\$	11039	BUSHING, ARM	10	
13\$	11419	PLATE, WEAR	1	
14\$	11431	THRUST COLLAR W/ BUSHING	1	INCLUDES ITEMS W/%
15\$	11594	SPRING, RS H ARM RETURN LARGE BOSS	5	
16\$	11602	SCREW, SHS 3/8"-16 X 1/4"	5	
17#	11904-1	LEVER, TROWEL ARM "H" RIGHT SIDE	5	
18#	12097	SCREW, SQHS 3/8"-16 X 1-3/4" GRD 8	2	
19\$	12779	BEARING, 85 MM X 130 MM, FLANGED	1	
20#	12786	SPIDER PLATE, 1-1/4" SHAFT	1	
21#	1141	KEY, 5/16" SQ X 2-5/8"	1	
22\$%	1471	BUSHING	1	
23\$	12208	WEAR RING	1	
24	10968	THRUST BEARING KIT	1	INCLUDES ITEMS W/\$
25	24360	SPIDER ASSY., 5 BLADE, LS.....	1	INCLUDES ITEMS W/#
26	1477	LOCTITE™ #242 BLUE, 0.5 CC BOTTLE	1	

SPIDER ASSY. (LEFT)



SPIDER ASSY. (LEFT)

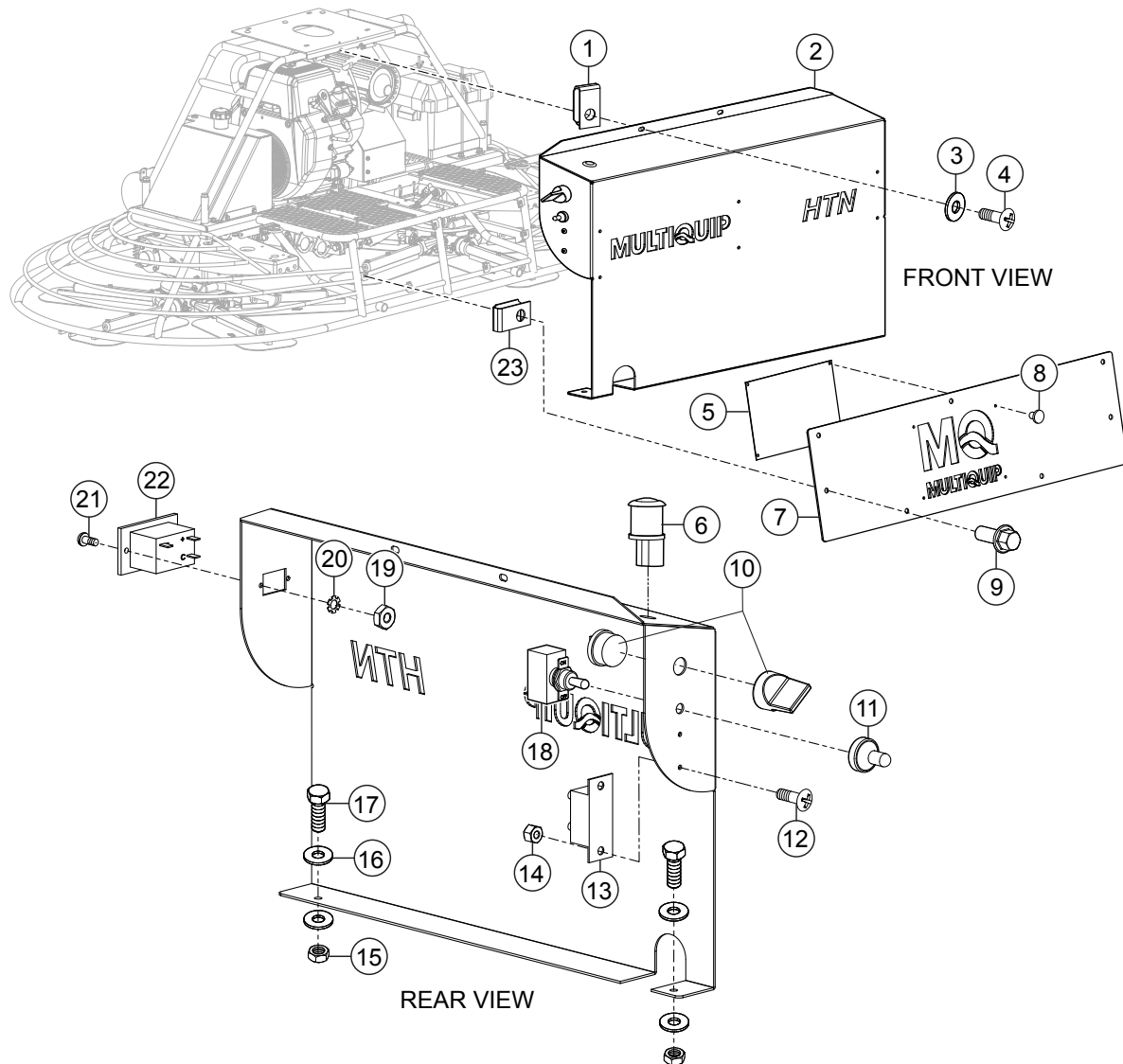
NO.	PART NO.	PART NAME	QTY.	REMARKS
1#	0164 B	SCREW,TROWEL ADJUSTMENT 3/8"-16	5	
2#	0166 A	WASHER, LOCK, 3/8" MED.	5	
3\$#	1162 A	CAP, GREASE ZERK, #2 YELLOW	6	
4#	1322	SCREW ASSY., TROWEL ARM RETAINING	5	
5#	1456	NUT, HEX FINISH 3/8"-16	2	
6#	1875	WASHER, INT. SHKP, 3/8"	5	
7#	1876	NUT, HEX JAM 3/8"-16	5	
8\$	2621	FITTING, GREASE ZERK STR. 1/4"-28	1	
9#	9006	PIN, ROLL 5/16" X 2 NP	5	
10#	9193	KEY, SQ RN .312 X 3.00	1	
11#	11039	BUSHING, ARM	10	
12\$	11419	PLATE, WEAR	1	
13\$	11431	THRUST COLLAR W/ BUSHING	1.....	INCLUDES ITEMS W/%
14#	11595	SPRING, LS H ARM RETURN LARGE BOSS	5	
15#	11602	SCREW, SHS 3/8"-16 X 1/4"	5	
16#	11903-1	LEVER, TROWEL ARM "H" LEFT SIDE	5	
17#	12097	SCREW, SQHS 3/8"-16 X 1-3/4" GRD 8	2	
18\$	12779	BEARING, 85 MM X 130 MM, FLANGED	1	
19#	12786	SPIDER PLATE, 1-1/4" SHAFT	1	
20#	21495-1	ARM, TROWEL ARM	5	
21\$%	1471	BUSHING	1	
22\$	12208	WEAR RING	1	
23	10968	THRUST BEARING KIT	1.....	INCLUDES ITEMS W/\$
24	1477	LOCTITE™ #242 BLUE, 0.5 CC BOTTLE	1	
25	24361	SPIDER ASSY., 5 BLADE, LS.....	1.....	INCLUDES ITEMS W/#



THROTTLE CABLE/FOOT PEDAL ASSY.

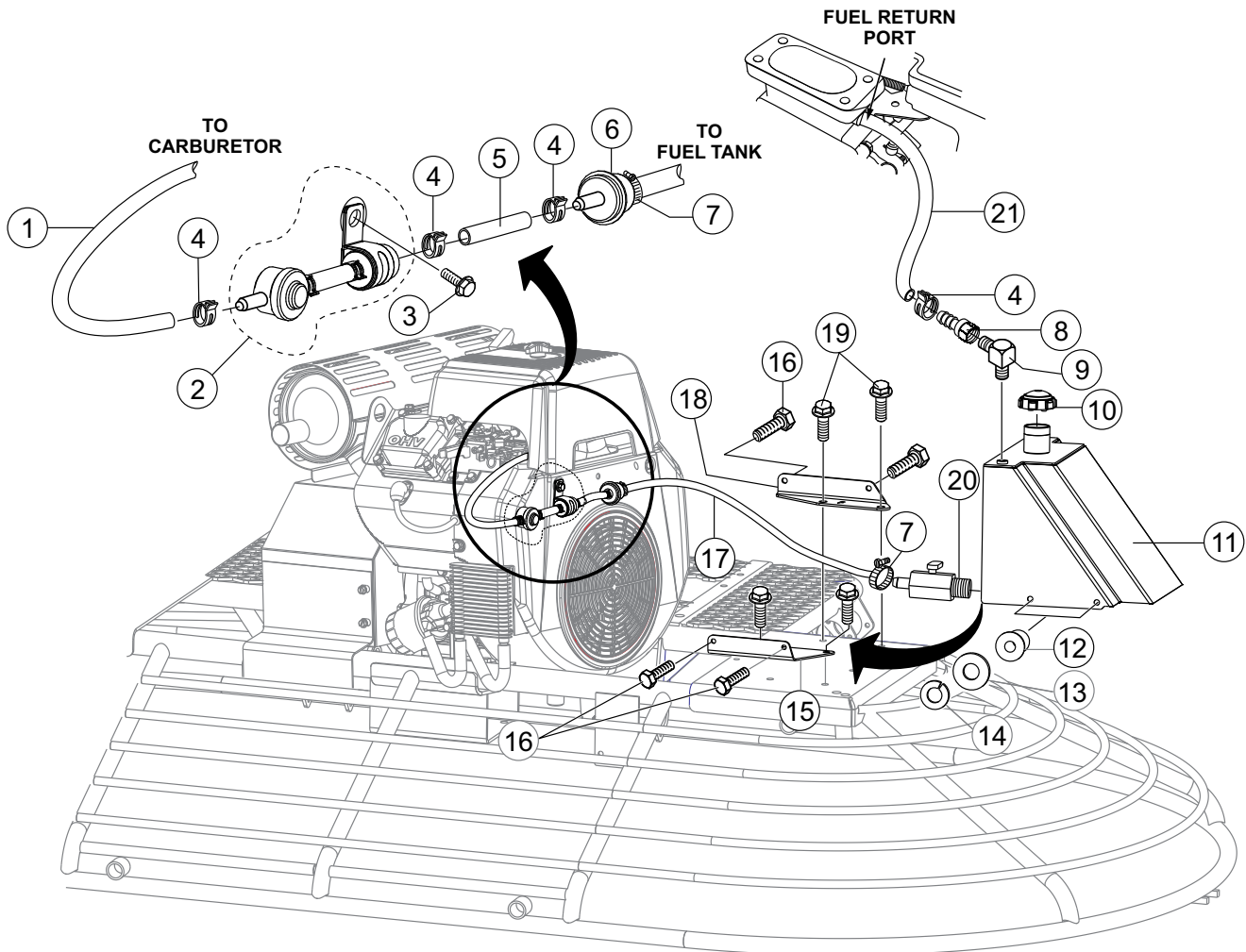
<u>NO.</u>	<u>PART NO.</u>	<u>PART NAME</u>	<u>QTY.</u>	<u>REMARKS</u>
1#	0300 B	WASHER, FLAT SAE 5/16"	2	
2#	2772	PIN, ACCELERATOR PEDAL	1	
3#	24193	PIN, COTTER, 2.5 X 30 MM	2	
4#	10136	WASHER, FLAT SAE 3/8"	2	
5#	24093	NUT, HEX M8 X 1.25 NYLOC	1	
6#	23591	PEDAL, ACCELERATOR	1	
7#	23596	SPACER, PEDAL	1	
8#	24170	STOPPER, WIRE	1	
9#	24179	SCREW, HHC M6-1.0 X 20 MM	1	
10#	24186	NUT, NYLOC, M4 X 0.7, BLACK SUS	1	
11#	24187	SCREW, TRUSS HD, M5 X .8 X 15 MM	2	
12#	24192	BALL BEARING	1	
13#	24211	BEARING, CAM FOLLOWER, 12D-M4	1	
14#	24214	CABLE, THROTTLE, INNER	1	
15#	24215	CASING, THROTTLE WIRE	1	
16#	24255	LINKAGE, ACCELERATOR PEDAL	1	
17#	24239	FOOT RISER, ACCELERATOR	1	
18#	37527	SPRING	1	
19	24275	ACCELERATOR PEDAL ASSY.....	1	INCLUDES ITEMS W/#
21	24096	WASHER, M8 SPLIT LOCK	4	
22	24093	HEX NUT, M8 X 1-1/4" NYLOC	5	
23	3233	WASHER, FENDER, 1-1/2" OD. X 3/8" ID.	2	
24	24245	FOOT RISER	1	
25	20845	SWIVEL, THROTTLE CABLE	1	
26	2192	SPRING, EXTENSION RT	1	

CONTROL PANEL ASSY.



CONTROL PANEL ASSY.

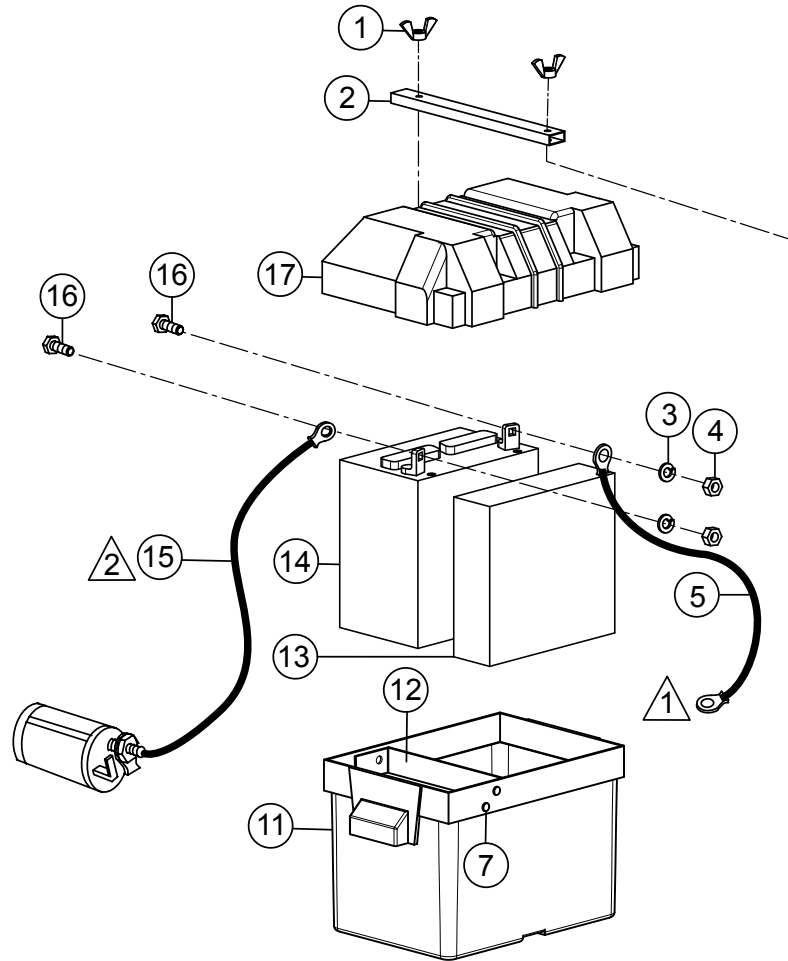
<u>NO.</u>	<u>PART NO.</u>	<u>PART NAME</u>	<u>QTY.</u>	<u>REMARKS</u>
1	11534	NUT, "U" TYPE, 1/4"-20	2	
2	24370	PANEL, CONTROL	1	
3	2203	WASHER, FLAT, #10	2	
4	5065 B	SCREW, PHP 10-32 X 1/2"	2	
5	24529	PLATE, LOGO BACKUP	1	
6	24469	LIGHT, RED INDICATOR 0.75 DIA.	1	
7	24455	PANEL, FRONT BODY	1	
8	19847	RIVET, POP BH .187 X.125-.250 GRIP	4	
9	22021	SCREW, HHFS M8-1.25 X 20 MM, GRD 10.9	7	
10	24466-K	KEY SWITCH	1	
11	8381	BOOT, TOGGLE SWITCH	1	
12	8133	SCREW, PHP 10-32 X 3/4"	2	
13	24459-20	CIRCUIT BREAKER, 12 VDC 20A	1	
14	10019	NUT, NYLOC 10-32	2	
15	5283	NUT, NYLOC 5/16"-18	2	
16	0300 B	WASHER, FLAT SAE 5/16"	4	
17	0202	SCREW, HHC 5/16"-18 X 1	2	
18	4682	SWITCH, TOGGLE SPST 20A 125VAC	1	
19	16723	NUT, HEX FIN 8-32	2	
20	10114	WASHER, #8	2	
21	1278	SCREW, PHP 8-32 X 3/8"	2	
22	24474	METER, BATTERY POWER	1	
23	24174	NUT, U TYPE, M8 X 1.25	7	



FUEL ASSY.

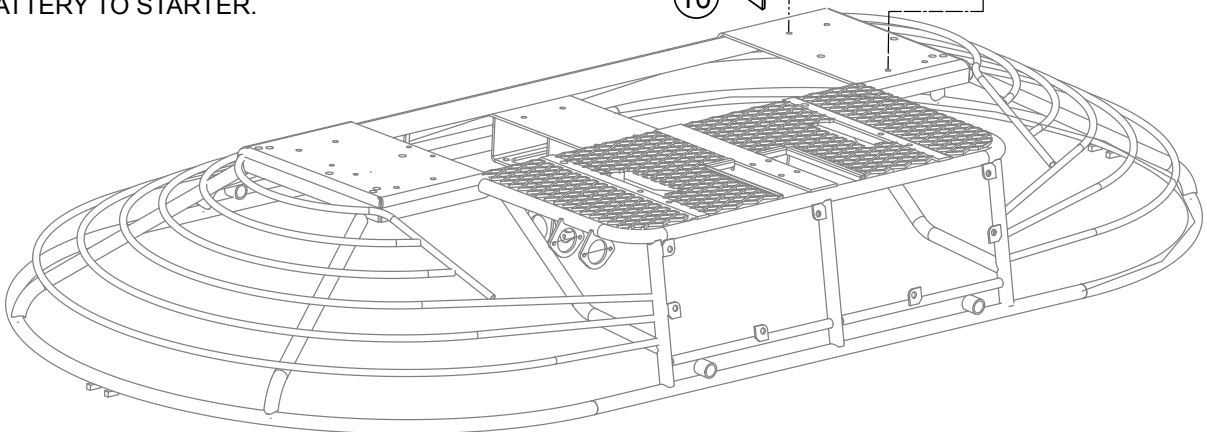
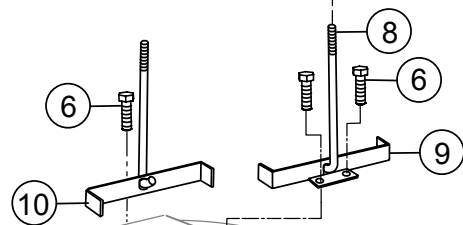
<u>NO.</u>	<u>PART NO.</u>	<u>PART NAME</u>	<u>QTY.</u>	<u>REMARKS</u>
1	X851061660	FUEL HOSE	1	
2	20K6220100	PUMP, FUEL	1	
3	X110060020	FLANGE BOLT	1	
4	2636850103	HOSE CLAMP	6	
5	X851061381	FUEL HOSE	1	
6	26365012A3	FILTER, FUEL	1	
7	24221	CLAMP, HOSE WORM, 12 MM-15 MM	2	
8	24565	FITTING, 6 BARB-4 FEMALE JIC SWIVEL	1	
9	24564	FITTING, 1/4" JIC MALE X M14.5 MALE	1	
10	24224	CAP, FUEL	1	
11	24471	TANK, FUEL	1	
12	19266	NUT, BLIND 1/4"-20 X .027-.165	4	
13	0948	WASHER, FLAT 1/4" SAE	4	
14	0181 B	WASHER, LOCK, 1/4" MEDIUM	4	
15	22103	BRACKET, TANK FUEL REAR	1	
16	4514	SCREW, HHC 1/4"-20 X 5/8" GRD 5	4	
17	24213	FUEL HOSE, 8 MM X 14 MM X 450 MM	1	
18	22102	BRACKET, TANK FUEL FRONT	1	
19	22106	SCREW, HHFS 3/8"-16 X 1-1/2"	4	
20	24257	VALVE, M14-8 MM BARB	1	
21	X851061481	FUEL HOSE	1	

BATTERY ASSY.



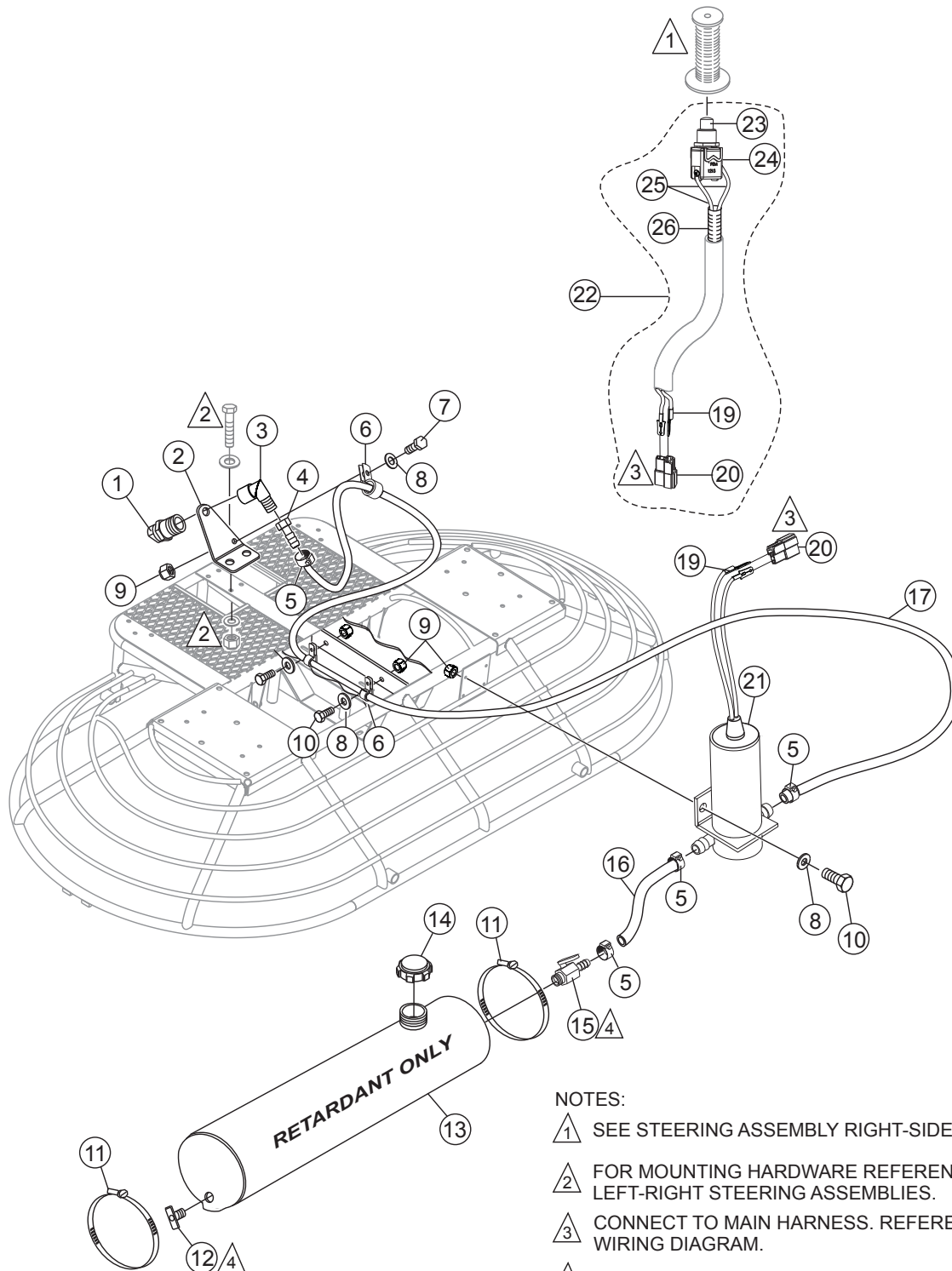
△ 1 NEGATIVE BATTERY CABLE.
BATTERY TO GROUND ON ENGINE
MOUNTING BOLT.

△ 2 POSITIVE BATTERY CABLE.
BATTERY TO STARTER.



BATTERY ASSY.

<u>NO.</u>	<u>PART NO.</u>	<u>PART NAME</u>	<u>QTY.</u>	<u>REMARKS</u>
1	24300	NUT, WING, M6 X 1.0	2	
2	24523	TUBE, BATTERY HOLD-DOWN	1	
3	0181 B	WASHER, LOCK, 1/4" MEDIUM	4	
4	0949	NUT, FINISH 1/4"-20	2	
5	24359	CABLE, BATTERY, NEGATIVE	1	
6	22106	SCREW, HHFS 3/8"-16 X 1.25 ZINC	4	
7	19847	RIVET, POP BH .187 X .125-.250	4	
8	24518	ROD, BATTERY HOLD-DOWN	2	
9	24519	BRACKET, BATTERY, FRONT	1	
10	24520	BRACKET, BATTERY, REAR	1	
11	24524-B	BATTERY BOX, LOWER	1	
12	24161	BRACKET, BATTERY	1	
13	24162	SPONGE	1	
14	24151	BATTERY, WET, 36B20	1	
15	24358	CABLE, BATTERY, POSITIVE	1	
16	0131 A	SCREW, HHC 1/4"-20 X 3/4"	2	
17	24524-C	BATTERY BOX, COVER	1	



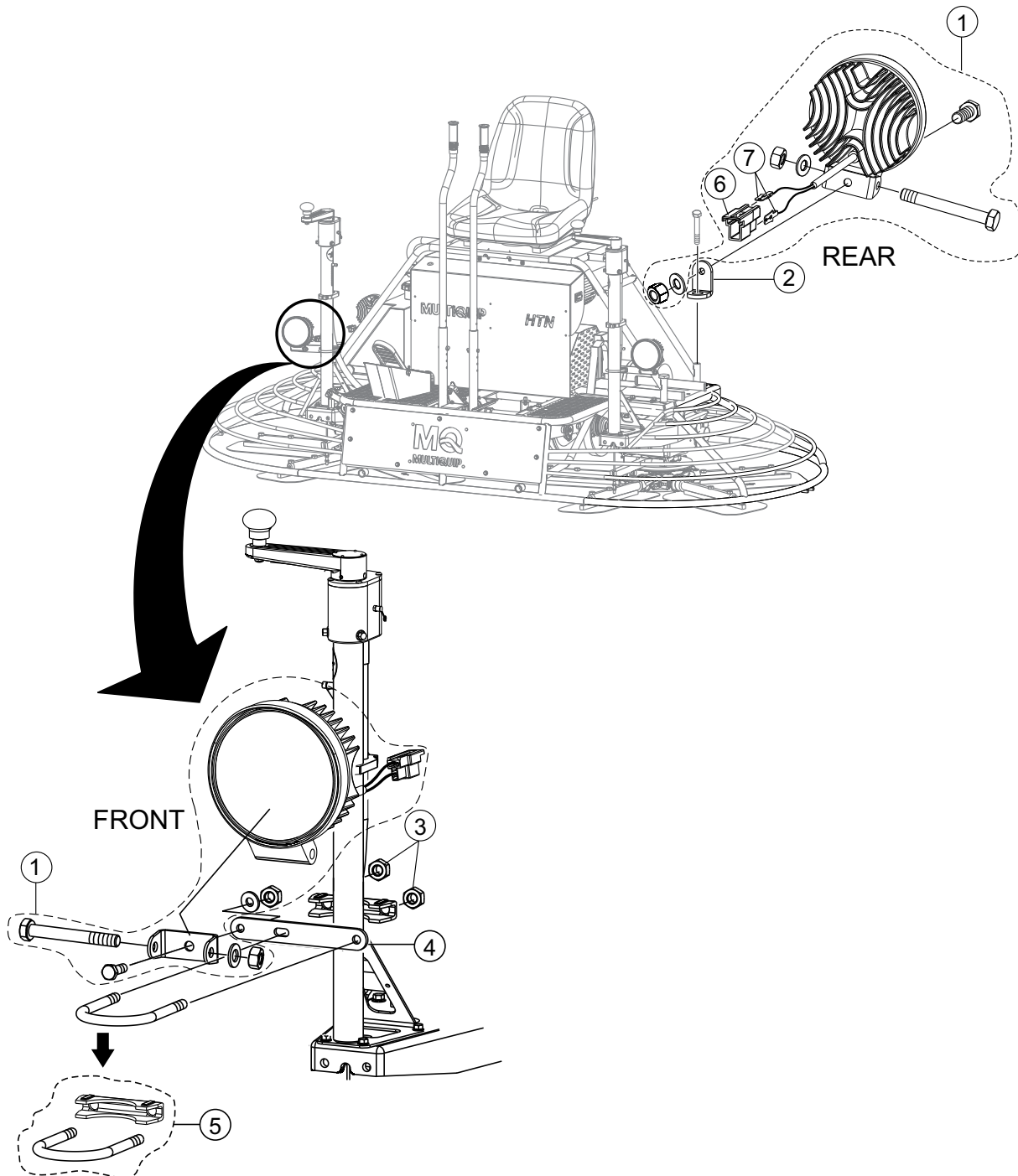
NOTES:

- △ 1 SEE STEERING ASSEMBLY RIGHT-SIDE
- △ 2 FOR MOUNTING HARDWARE REFERENCE LEFT-RIGHT STEERING ASSEMBLIES.
- △ 3 CONNECT TO MAIN HARNESS. REFERENCE WIRING DIAGRAM.
- △ 4 APPLY TEFLON TAPE TO THREADS.

SPRAY ASSY.

<u>NO.</u>	<u>PART NO.</u>	<u>PART NAME</u>	<u>QTY.</u>	<u>REMARKS</u>
1	24219	NOZZLE, SPRAY	1	
2	11222	MOUNT, SPRAY NOZZLE	1	
3	24216	FITTING, BRASS 90°, 1/4"M X 1/4"F	1	
4	24220	FITTING, PF 1/4"-10 MM DIA.	1	
5	24221	CLAMP, HOSE WORM, 12 MM-15 MM	4	
6	24290	CLAMP, HOSE SUPPORT, 16 MM-7 MM	3	
7	4514	SCREW, HHC 1/4"-20 X 5/8" GRD 5	1	
8	0948	WASHER, FLAT 1/4" SAE	5	
9	10024	NUT, NYLOC 1/4"-20	5	
10	0131 A	SCREW, HHC 1/4"-20 X 3/4"	4	
11	2398	CLAMP, HOSE WORM #96 4.75" TO 6.50"	2	
12	2478	FITTING, DRAIN	1	
13	24178	TANK, RETARDANT	1	
14	24212	CAP, SPRAY TANK	1	
15	24257	VALVE, M14-8 MM BARB	1	
16	24413	HOSE, 8 MM ID. X 12 MM O.D (59.05")	5.....	1PC=1FT
19\$	24201	TERMINAL, TANG, MALE 16-14GA	2	
20#\$	24202	CONNECTOR BODY	1	
21\$	12548	PUMP, SPRAY, SHURFLO 100-000-21	1	
22	24276	SWITCH ASSY., SPRAY	1.....	INCLUDES ITEMS W/#
23#	24199	SWITCH, PUSH BUTTON, 4A, 12 VDC	1	
24#	24169	HOLDER, SPRAY SWITCH	1	
25#	24276	WIRE, 1.25 SQCM, BLACK, 79" LG 2	2	
26#	60221	LOOM, .375 SPLIT, 6.4 FT.....	2.....	1PC=1FT

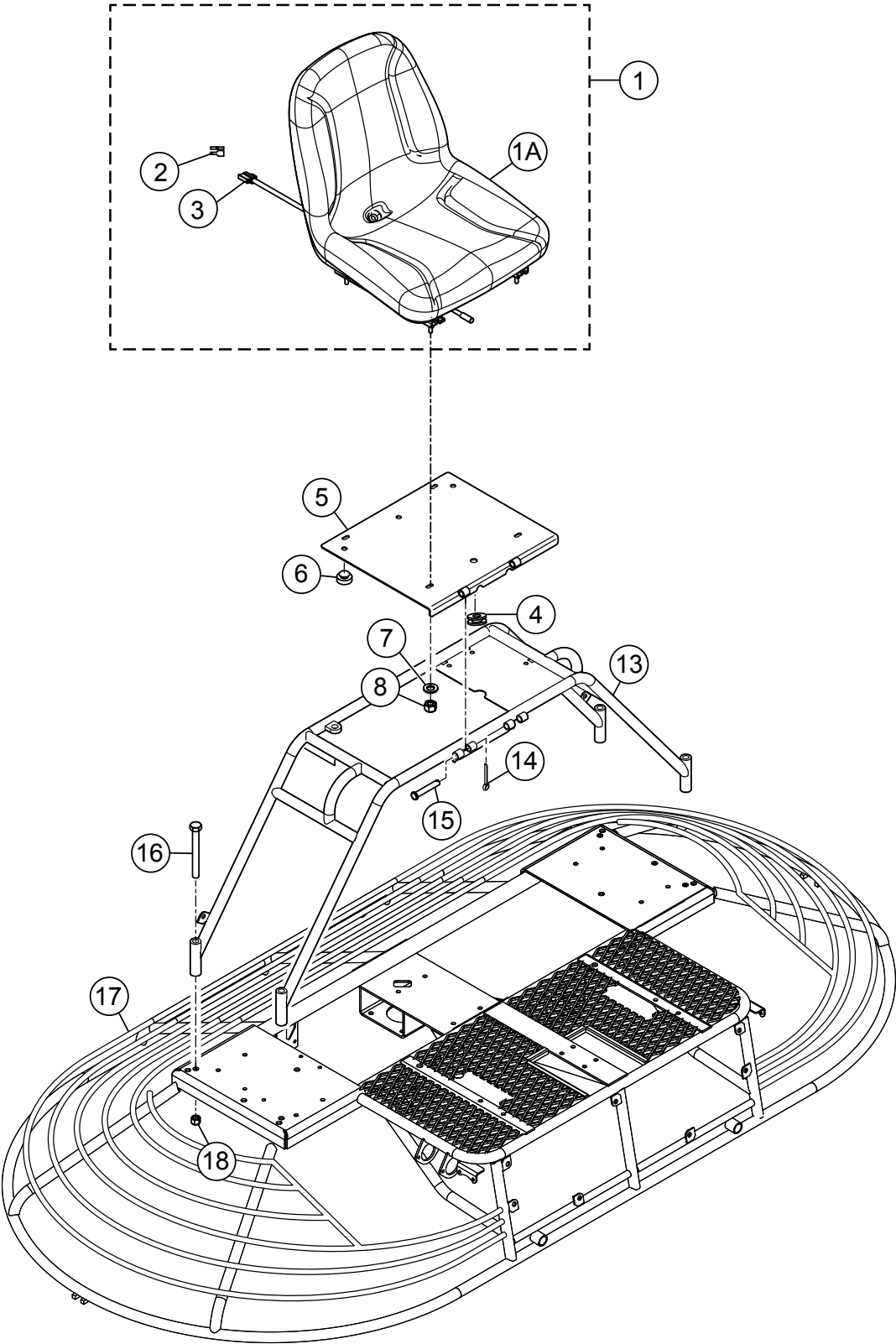
LIGHT ASSY.



LIGHT ASSY.

<u>NO.</u>	<u>PART NO.</u>	<u>PART NAME</u>	<u>QTY.</u>	<u>REMARKS</u>
1	24482	LIGHT ASSEMBLY, LED	4.....	INCLUDES ITEMS W/#
2	24537	BRACKET, MOUNT, REAR LIGHT	2	
3	24093	NUT HEX, M8 X 1.25 NYLOC	4	
4	24441	BRACKET, LIGHT SIDE	2	
5	24160	CLAMP, 1-3/4"	2	
6#	24202	CONNECTOR BODY	1	
7#	24201	TERMINAL, MALE 16-14GA	2	

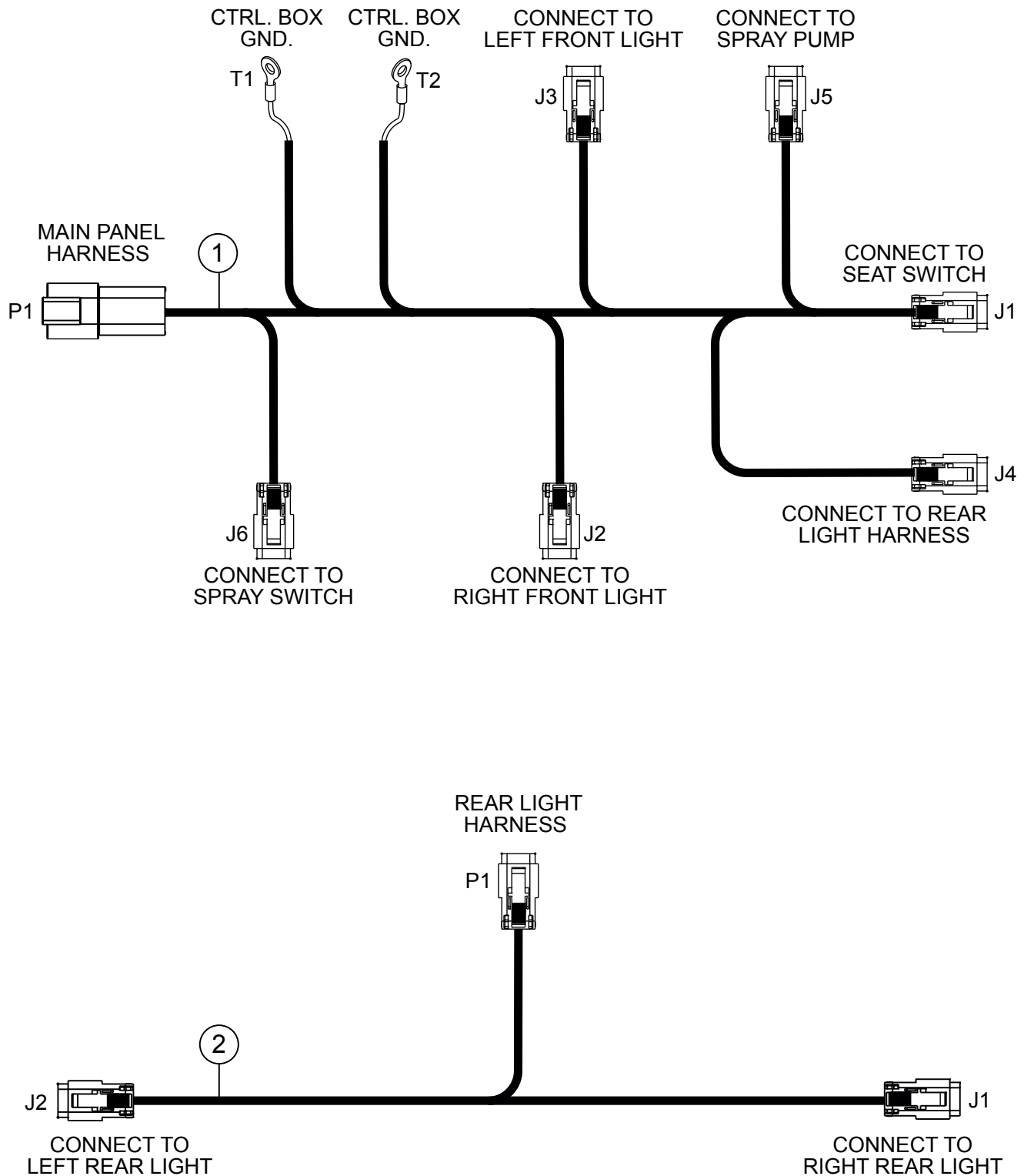
SEAT FRAME ASSY.



SEAT FRAME ASSY.

<u>NO.</u>	<u>PART NO.</u>	<u>PART NAME</u>	<u>QTY.</u>	<u>REMARKS</u>
1	24120	SEAT ASSEMBLY	1.....	INCLUDES ITEMS W/\$
1A\$	24203	SEAT, SC-3-26	1	
2\$	24234	CONNECTOR BODY, MALE	1	
3\$	24233	TERMINAL, FEMALE	2	
4	19468	GROMMET	1	
5	24412	SEAT PLATE	1	
6	21597	BUMPER, STEM 1.0" DIA. X .5S X .31	3	
7	0300 B	WASHER, FLAT SAE 5/16"	4	
8	5283	NUT, NYLOC 5/16"-18	4	
13	22129	FRAME, SEAT	1	
14	0183	PIN, COTTER 1/8" DIA. X 1-1/4"	2	
15	8081	PIN, CLEVIS 1/2" X 2-3/4"	2	
16	913222	SCREW, HHC 1/2"-13 X 4-3/4"	4	
17	24332	FRAME, MAIN	1	
18	10176	NUT, NYLOC 1/2"-13	4	

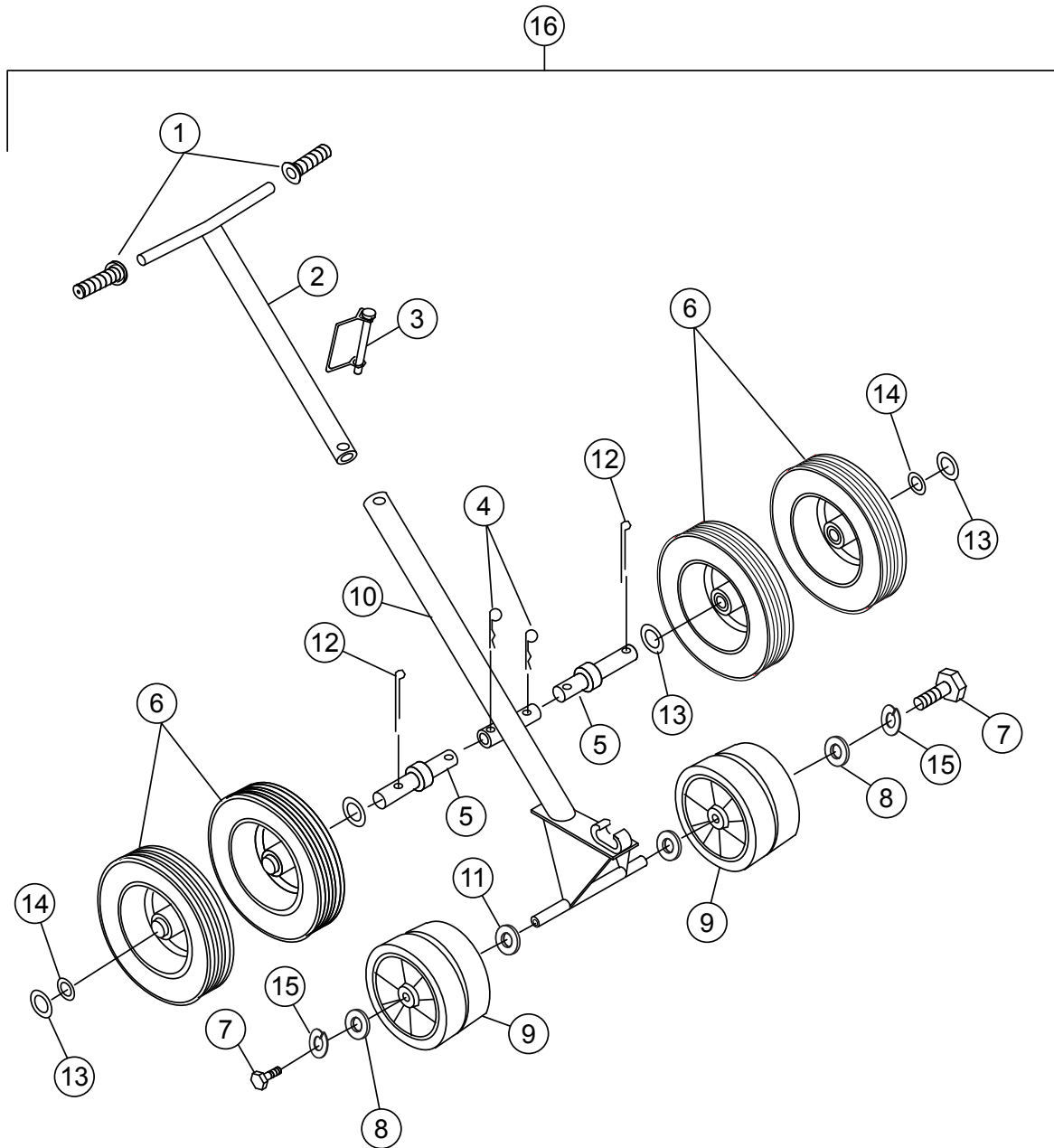
HARNESS ASSY.



HARNESS ASSY.

<u>NO.</u>	<u>PART NO.</u>	<u>PART NAME</u>	<u>QTY.</u>	<u>REMARKS</u>
1	24351	WIRE HARNESS, MAIN	1	
2	24342	WIRE HARNESS, REAR LIGHT	1	

EZ-MOVER AND LIFT HANDLE ASSY.



EZ-MOVER AND LIFT HANDLE ASSY.

<u>NO.</u>	<u>PART NO.</u>	<u>PART NAME</u>	<u>QTY.</u>	<u>REMARKS</u>
1#	22762	HAND GRIP	2	
2#	2336	HANDLE, UPPER	1	
3#	QS1869	PIN, SNAP	1	
4#	7170	CLIP	4	
5#	11684	AXLE, DOLLY	2	
6#	10440	WHEEL & TIRE	4	
7#	0655	SCREW, HHCS 5/16"-18 X 3/4"	2	
8#	0300 B	WASHER, FLAT 5/16"	2	
9#	2364	WHEEL, 2 X 8 MOLDED RUBBER	2	
10#	10445	93 EZ MOVER LOWER	1	
11#	4684	WASHER, FLAT 5/8"	2	
12#	0183	COTTER PIN	4	
13#	10446	WASHER, NYL. 3/4" ID. X 1-1/2" OD. X 1/16"	8	
14#	8151	WASHER, FLAT SAE 3/4"	8	
15#	0161 C	WASHER, LOCK 5/16"	2	
16	EMR2	E-Z MOVER ASSY.	1.....	INCLUDES ITEMS W/# SEE NOTICE BELOW

NOTICE

Purchase EZ-Mover Assembly through MQ Unit Sales.

TERMS AND CONDITIONS OF SALE — PARTS

PAYMENT TERMS

Terms of payment for parts are net 30 days.

FREIGHT POLICY

All parts orders will be shipped collect or prepaid with the charges added to the invoice. All shipments are F.O.B. point of origin. Multiquip's responsibility ceases when a signed manifest has been obtained from the carrier, and any claim for shortage or damage must be settled between the consignee and the carrier.

MINIMUM ORDER

The minimum charge for orders from Multiquip is \$15.00 net. Customers will be asked for instructions regarding handling of orders not meeting this requirement.

RETURNED GOODS POLICY

Return shipments will be accepted and credit will be allowed, subject to the following provisions:

1. A Returned Material Authorization must be approved by Multiquip prior to shipment.
2. To obtain a Return Material Authorization, a list must be provided to Multiquip Parts Sales that defines item numbers, quantities, and descriptions of the items to be returned.
 - a. The parts numbers and descriptions must match the current parts price list.
 - b. The list must be typed or computer generated.
 - c. The list must state the reason(s) for the return.
 - d. The list must reference the sales order(s) or invoice(s) under which the items were originally purchased.
 - e. The list must include the name and phone number of the person requesting the RMA.
3. A copy of the Return Material Authorization must accompany the return shipment.
4. Freight is at the sender's expense. All parts must be returned freight prepaid to Multiquip's designated receiving point.

5. Parts must be in new and resalable condition, in the original Multiquip package (if any), and with Multiquip part numbers clearly marked.
6. The following items are not returnable:
 - a. Obsolete parts. (If an item is in the price book and shows as being replaced by another item, it is obsolete.)
 - b. Any parts with a limited shelf life (such as gaskets, seals, "O" rings, and other rubber parts) that were purchased more than six months prior to the return date.
 - c. Any line item with an extended dealer net price of less than \$5.00.
 - d. Special order items.
 - e. Electrical components.
 - f. Paint, chemicals, and lubricants.
 - g. Decals and paper products.
 - h. Items purchased in kits.
7. The sender will be notified of any material received that is not acceptable.
8. Such material will be held for five working days from notification, pending instructions. If a reply is not received within five days, the material will be returned to the sender at his expense.
9. Credit on returned parts will be issued at dealer net price at time of the original purchase, less a 15% restocking charge.
10. In cases where an item is accepted, for which the original purchase document can not be determined, the price will be based on the list price that was effective twelve months prior to the RMA date.
11. Credit issued will be applied to future purchases only.

PRICING AND REBATES

Prices are subject to change without prior notice. Price changes are effective on a specific date and all orders received on or after that date will be billed at the revised price. Rebates for price declines and added charges for price increases will not be made for stock on hand at the time of any price change.

Multiquip reserves the right to quote and sell direct to Government agencies, and to Original Equipment Manufacturer accounts who use our products as integral parts of their own products.

SPECIAL EXPEDITING SERVICE

A \$35.00 surcharge will be added to the invoice for special handling including bus shipments, insured parcel post or in cases where Multiquip must personally deliver the parts to the carrier.

LIMITATIONS OF SELLER'S LIABILITY

Multiquip shall not be liable hereunder for damages in excess of the purchase price of the item with respect to which damages are claimed, and in no event shall Multiquip be liable for loss of profit or good will or for any other special, consequential or incidental damages.

LIMITATION OF WARRANTIES

No warranties, express or implied, are made in connection with the sale of parts or trade accessories nor as to any engine not manufactured by Multiquip. Such warranties made in connection with the sale of new, complete units are made exclusively by a statement of warranty packaged with such units, and Multiquip neither assumes nor authorizes any person to assume for it any other obligation or liability whatever in connection with the sale of its products. Apart from such written statement of warranty, there are no warranties, express, implied or statutory, which extend beyond the description of the products on the face hereof.

Effective: February 22, 2006

[illegible]

PARTS MANUAL

HERE'S HOW TO GET HELP

PLEASE HAVE THE MODEL AND SERIAL
NUMBER ON-HAND WHEN CALLING

CHINA

MQ Shanghai, China

No. 1355 Heng Cang Road
Ma Lu Town Jia Ding District
Shanghai, China 201818

Tel. 011 86 21 59512076
Fax 011 86 21 59512336

Contact: Xiwen Shi
xshi@multiquip.com

UNITED KINGDOM

Multiquip (UK) Limited Head Office

Unit 2, Northpoint Industrial Estate, Globe
Lane,
Dukinfield, Cheshire SK16 4UJ
Contact: sales@multiquip.co.uk

Tel: 0161 339 2223
Fax: 0161 339 3226

UNITED STATES

Multiquip Corporate Office

18910 Wilmington Ave.
Carson, CA 90746
Contact: mq@multiquip.com

Tel. (800) 421-1244
Fax (310) 537-3927

© COPYRIGHT 2017, MULTIQUIP INC.

Multiquip Inc and the MQ logo are registered trademarks of Multiquip Inc. and may not be used, reproduced, or altered without written permission. All other trademarks are the property of their respective owners and used with permission.

The information and specifications included in this publication were in effect at the time of approval for printing. Illustrations, descriptions, references and technical data contained in this document are for guidance only and may not be considered as binding. Multiquip Inc. reserves the right to discontinue or change specifications, design or the information published in this publication at any time without notice and without incurring any obligations.

Your Local Dealer is:



PN: 24444