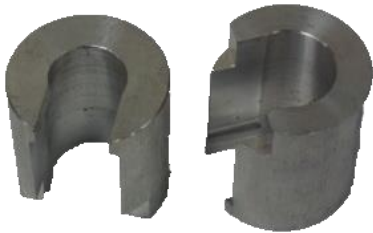
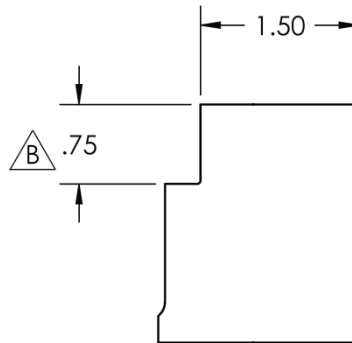




PITCH CYLINDER CALIBRATION GAUGES UPDATE

This document is to inform of a production update to the pitch cylinder calibration gauges. The tool's clearance $\triangle B$ in the following illustrations has been increased from .50" to .75" as of November 2016. This update expands the tools application to include the HTX6H & STX6H units. Pitch cylinder calibration gauges made before November 2016 can be cut to the new specs.

Qty 2 – Part # 32000 (2.25") Gauge Tool - Used in calibrating one of the two blade pitch set points as part of the synchronization process, two of these are required per unit.



Pitch Cylinder Calibration Gauges

Qty 2 – Part # 32044 (3.25") Gauge Tool – Used in calibrating one of the two blade pitch set points as part of the synchronization process, two of these are required per unit.

