



This bulletin is provided for technical reference and service related updates. If you have any questions, comments or do not wish to receive these e-mails, please reply to this e-mail or call the Service Technical Support Group 800 478-1244.

ENGINE INTERFACE CABLE AND DIAGNOSTIC SOFTWARE

The Whiteman HTXG6DF hydraulic trowel utilizes a 68HP PSI engine as its power plant. The engine reports its DTC (Diagnostic Trouble Codes) via CAN BUS to the MPV (Murphy Power View) on the operators’ panel. Both the operator and service technician can view trouble codes by reading the MPV.

In some service situations, using the PSI 4G Display laptop software and interface cable might be needed for additional engine diagnostics.

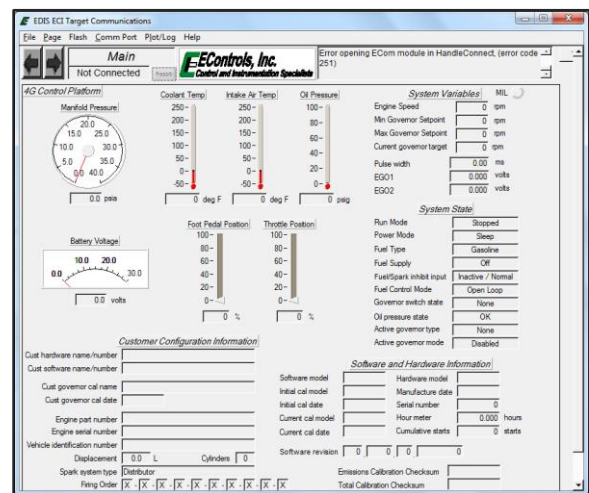
Some additional items performed using the 4G Display software are:

- Clearing of all codes, including historical codes
- Real-time viewing of all active engine parameter including LPG gaseous pressure.
- Data plotting and recording of engine parameters.

Interface Cable and Software MQ P/N 42539



*Program screenshot



**program user interface may change without prior notice
Supports Windows 2000, XP, Vista and Windows 7 operating system*