



Service Bulletin

HTXG6DF Lift Loops/Steering Cylinders/Fuel Lines/ Splash Guard Modifications

Product Group: Ride-on Trowels	Date Issued: 09/25/15	Service Bulletin No. TR20150820
Bulletin Type <input checked="" type="checkbox"/> Mandatory <input type="checkbox"/> Information Only <input type="checkbox"/> Recommended Change		Models/Series Affected: HTXG6DF S/N RD2002976 — RH2003048

Details

Problems:

- The undersides of the lift loops may have sharp edges that could damage the lifting straps and affect lifting strength.
- The bolt used to fasten the steering cylinder ball joint to the clevis at the drive motor mount was undersized. This could cause movement between the cylinder and the drive motor and affect steering performance.
- The fuel line rating used was incorrect.
- Insufficient oil pan clearance.

Solutions:

- Grind or file down sharp areas.
- Replace bolt with a 3/8 bolt to improve steering.
- Remove and replace 5 hoses (fuel lines).
- Remove blind nut from splash guard bracket for clearance.

Parts Information

Item No.	Part No.	Description	QTY.	Remarks
<i>Lift Loops:</i>				
1	11460	Touch-up Paint, 6 oz	1	
<i>Steering Cylinders:</i>				
2	13178	Bolt, 3/8 x 16 x 2 ¼	4	
3	12318	Bolt, 3/8 x 16 x 2 ½	2	
4	10176	Flexlock Nut	6	
<i>Fuel Lines:</i>				
5	32661	Kit, Fuel Service Line	1	Includes items 6 - 8
6	42459	Hose, Rubber, Fuel	9.5 ft	
7	37822	Clamp, Oetiker Stepless Ear	8	
8	19473	Clamp, House, Worm #2	2	

LIFT LOOPS

Tools Needed:

- Small Grinder with Stone
- Die Grinder or File (Fine Cut)
- 3/8 Drive Ratchet
- 14mm/10mm Socket

Procedure:

1. Place trowel on secure level ground where it will not slip or slide.
2. **CLOSE** shutoff valve on propane tank (Figure 1).

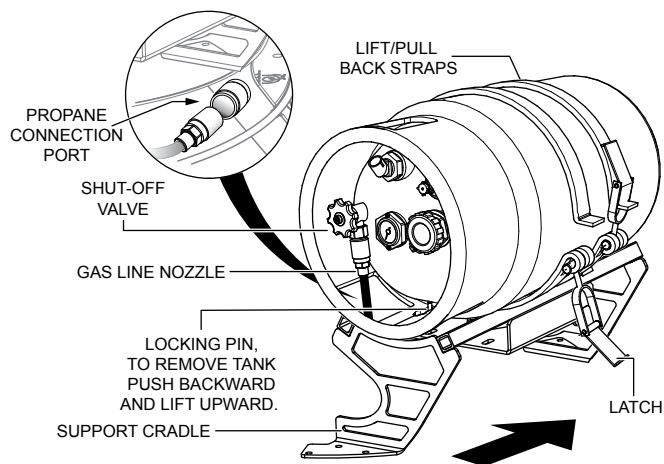


Figure 1. Propane Tank Removal

3. Disconnect LPG gas line nozzle from propane tank fill port.
4. Secure LPG gas nozzle/hose to the propane connection port below the propane tank.
5. Release propane tank strap latches.
6. Push backward and lift upward to remove propane tank.
7. Remove the four screws holding the support cradle and remove support cradle.

8. Remove 10 mm bolt at the gas tank to allow it to fold back (Figure 2).

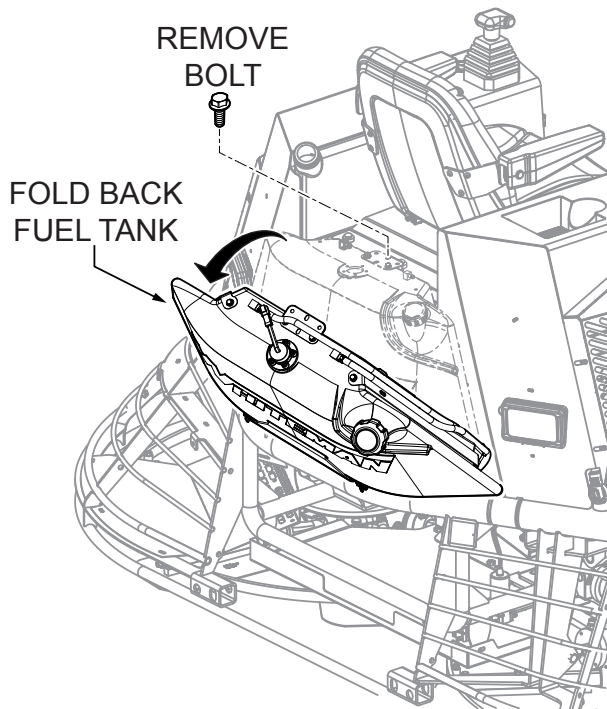


Figure 2. Gas Tank Bolt Removal

Opening Left and Right Consoles

Refer to Figure 3 for location of bolts.

1. With gas tank hinged back, remove the rear bolt that secures the left console.
2. Remove the front bolt that secures the left console.
3. Open the left console.
4. Remove the front and rear bolts that secure the right console.
5. Open the right console.

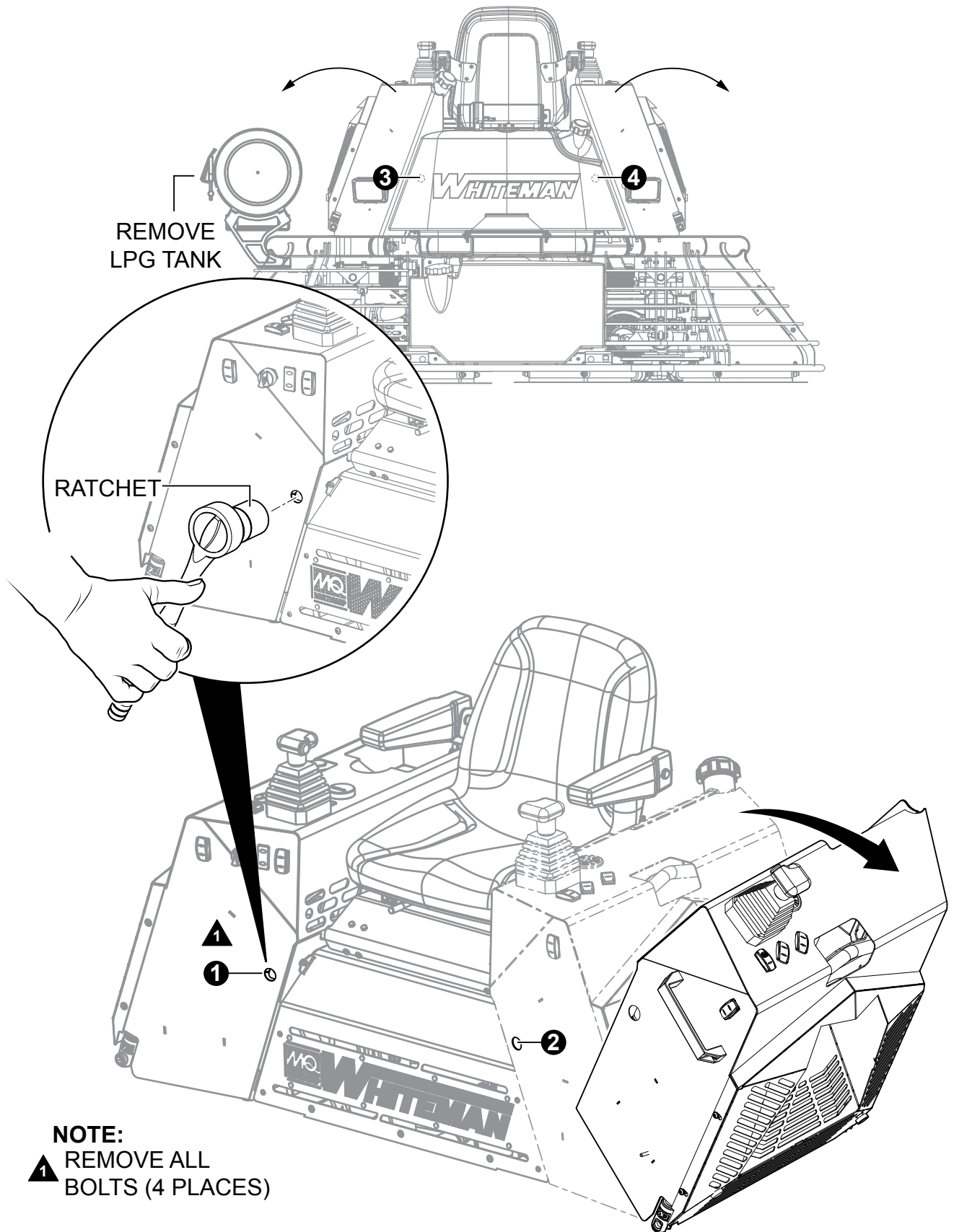


Figure 3. Console Bolt Removal

6. Disconnect the black cable from the negative battery terminal of the battery (Figure 4).

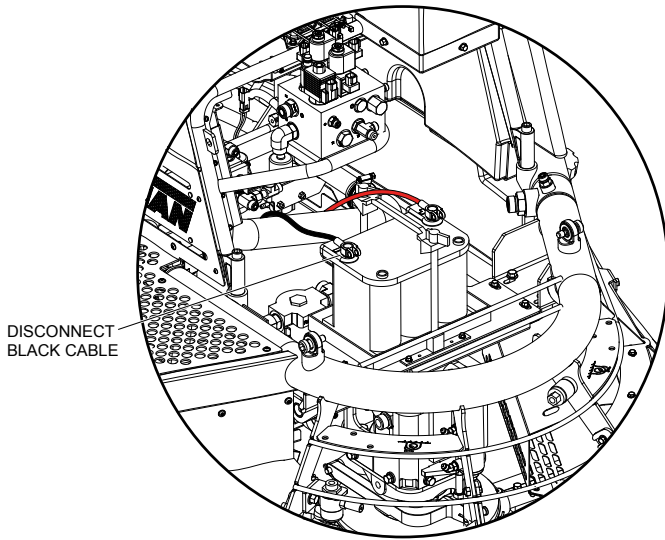
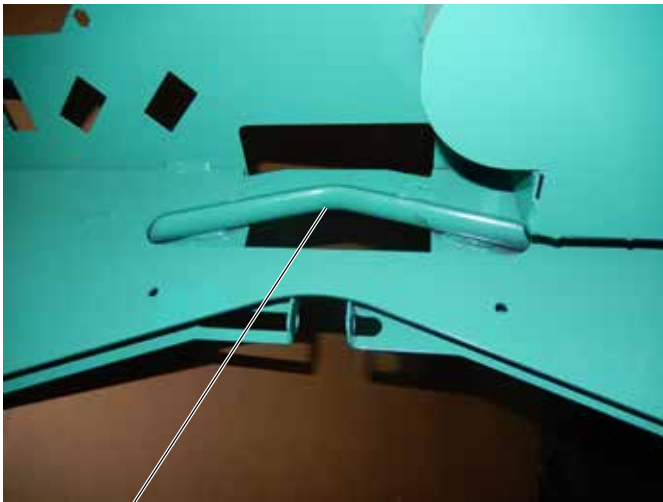


Figure 4. Disconnecting Battery

Grinding/Filing

1. Using a small grinder or similar tool, remove the sharp edges on the lift loops on both the left and right sides of the trowel.



FILE SHARP AREAS TO MAKE
RIGHT ANGLE CORNER SMOOTH

Figure 5. Filing Sharp Edges

2. To make the edges smoother, use a die grinder or fine cut file.
3. When edges are smooth, use touch-up paint (P/N 11460) to cover the filed areas.
4. When procedure is completed, reinstall propane support cradle, propane tank, gas tank, and battery.

STEERING CYLINDER

Tools Needed:

- 3/4 End Wrench
- 3/8 Ratchet
- 3/4 Shallow Socket

Procedure:

1. Make sure that the engine and hydraulic system are cool.
2. Remove ignition key to make sure unit will not start inadvertently.
3. Following safe lifting procedures, lift trowel and secure on jack stands.
4. Locate the 3 steering cylinders from underneath the trowel. Refer to Figure 6 for location.
5. Replace the 6 existing bolts and nuts with new ones as indicated in Figure 6.

NOTICE

Two of the new bolts (longer ones) have to be installed later. The steering cylinders (A and C in Figure 6) share bolts with the center splash guard bracket. This bracket needs to be removed in the next section. Replace these bolts (P/N 12318) and nuts (P/N 10176) together with splash guard bracket reinstallation in the next section.

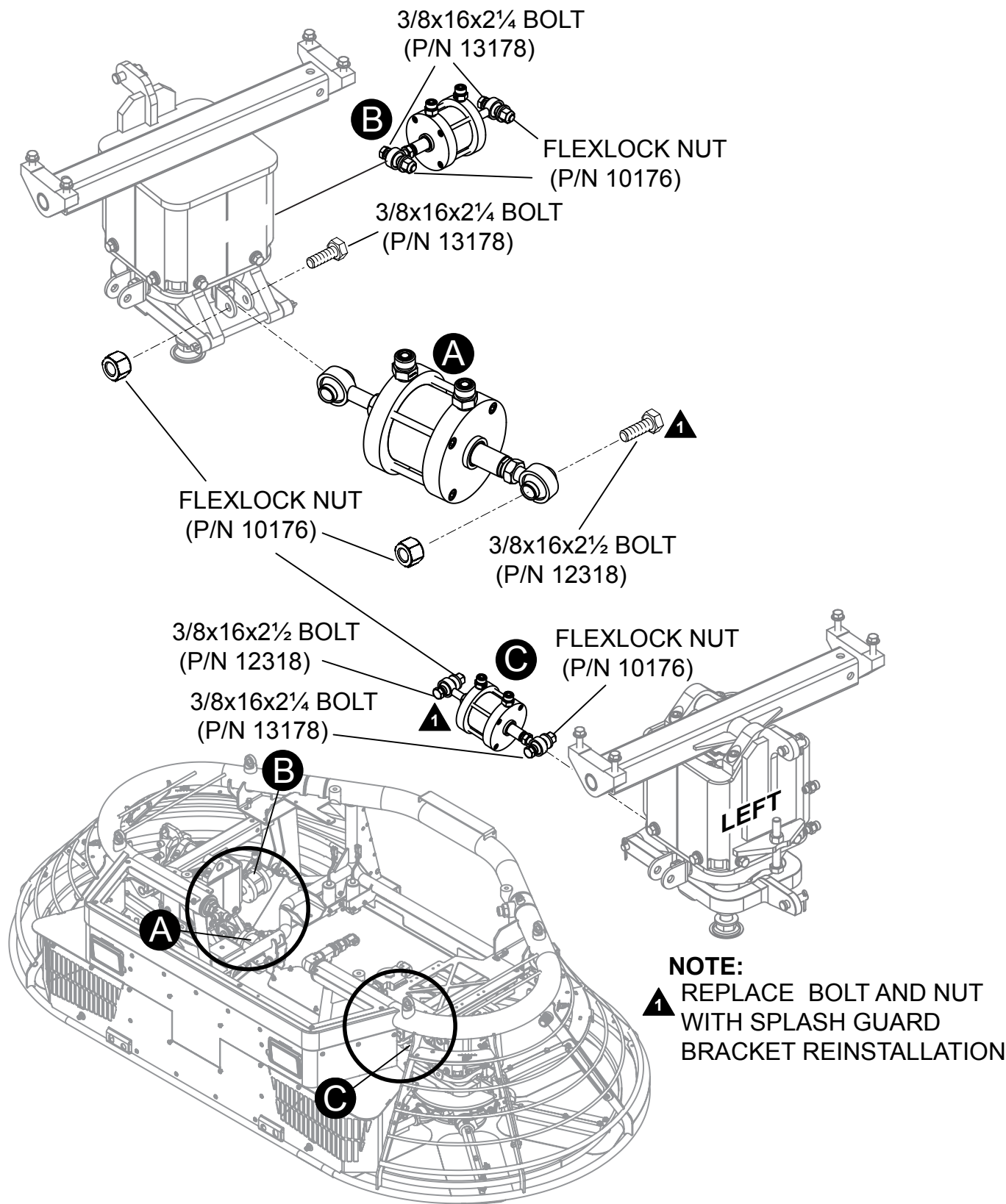


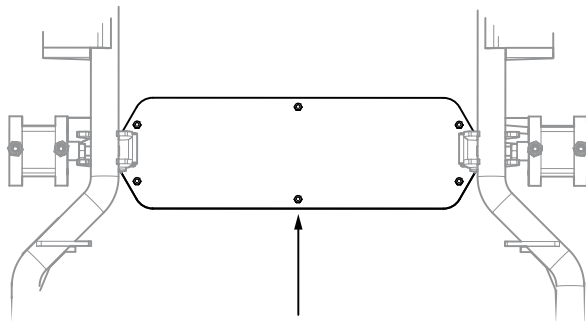
Figure 6. Steering Cylinder Bolts

CENTER SPLASH GUARD BRACKET

Tools Needed:

- Drill
- 3/8 Ratchet with Socket Set

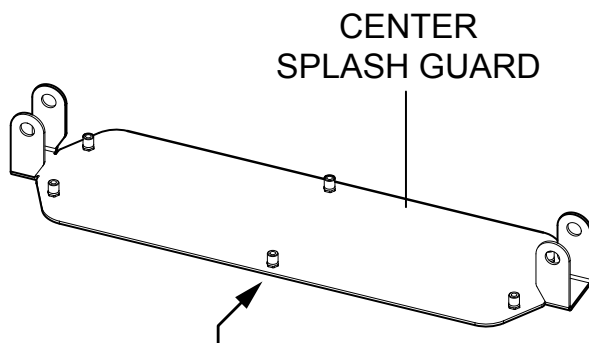
1. Locate the center splash guard bracket (P/N 42406) on the machine. Remove the six screws holding the bracket (Figure 7) from under the unit. Bolts shared with the steering cylinders have been removed from previous procedure.



CENTER
SPLASH GUARD
REMOVE ALL SCREWS
(6 PLACES)

Figure 7. Removing Splash Guard Bracket

2. Remove the bracket.
3. Drill out one of the center blind nuts from the bracket and discard (Figure 8).



DRILL OUT
BLIND
NUT

Figure 8. Center Blind Nut Removal

4. Reattach the splash guard bracket (together with the steering cylinders) to the machine. Make sure that the empty nut hole is positioned towards the front of the machine. Tighten all bolts and screws. See Figure 9.

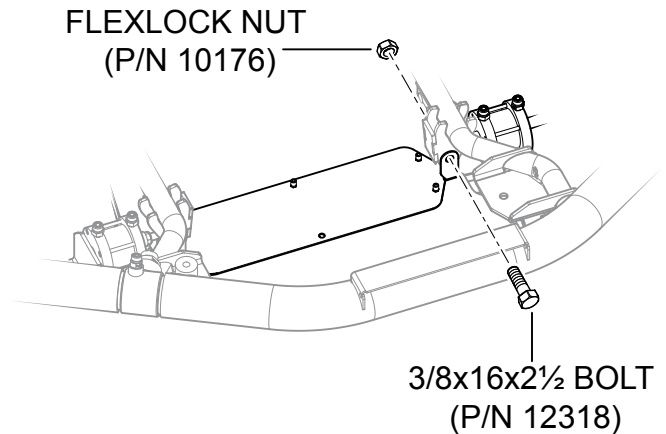


Figure 9. Reinstallation of Splash Guard Bracket with Steering Cylinders

FUEL LINE

Tools Needed:

- Hose Cutter
- Clamp Crimping Tool
- Side-Cutting Pliers

1. Cut the replacement hose (P/N 42459) to the following lengths shown in Table 1.

Table 1. Lengths of Hoses		
Item	Hoses to be Replaced	Length (ft)
1	Line, Fuel Inlet	3.50
2	Pump to Filter	0.22
3	Filter to Manifold	0.40
4	Manifold to Rail	2.0
5	Fuel Return	3.58

2. Remove and replace five fuel lines (items 1 to 5 in Table 1) shown in Figure 10. All clamps should also be removed, discarded, and replaced with new ones in the kit.

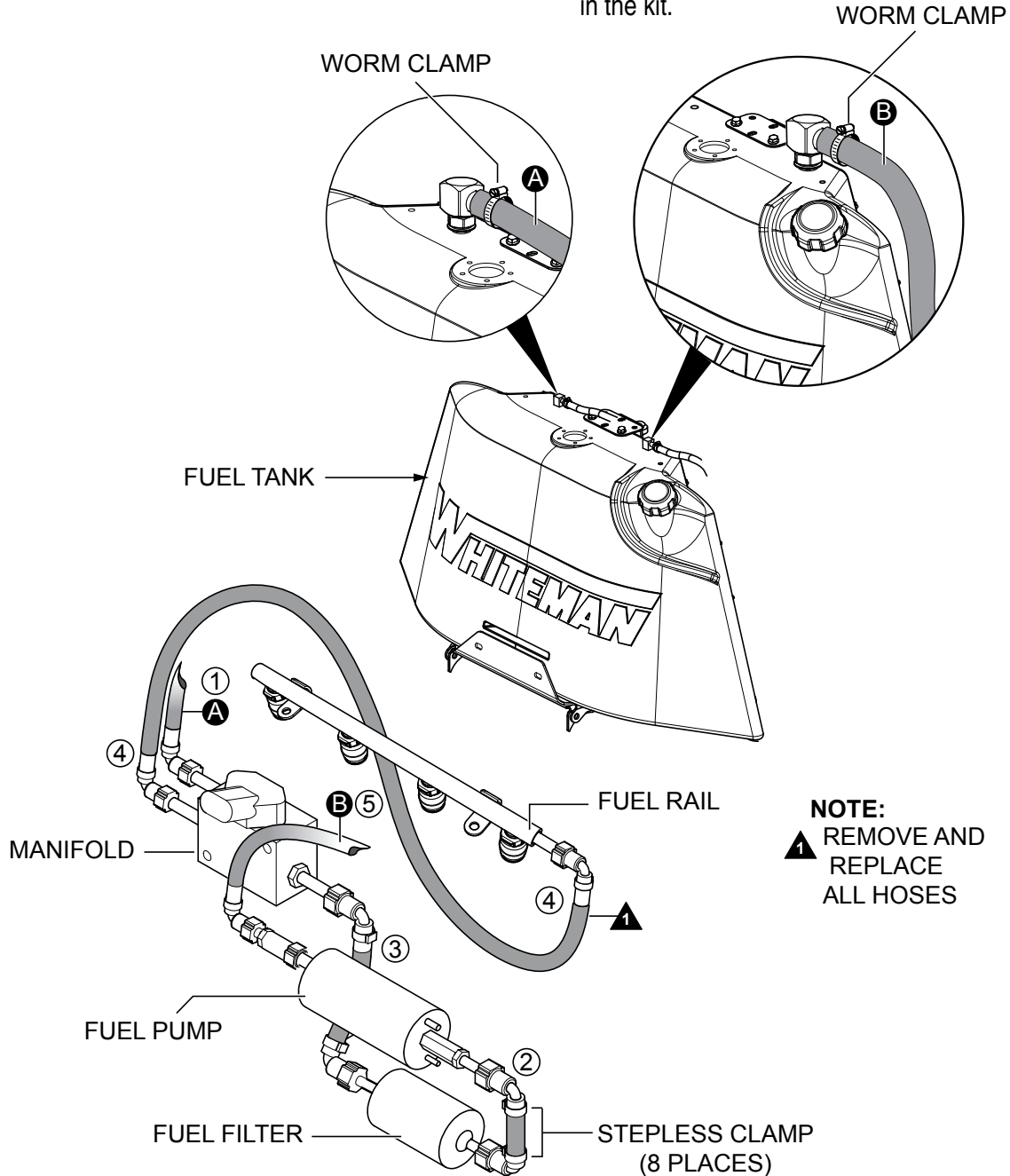


Figure 10. Location of Fuel Lines



Service Bulletin

HTXG6DF Lift Loops/Steering Cylinders/Fuel Lines/ Splash Guard Modifications

HERE'S HOW TO GET HELP

PLEASE HAVE THE MODEL AND SERIAL
NUMBER ON-HAND WHEN CALLING

UNITED STATES

Multiquip Corporate Office

18910 Wilmington Ave. Tel. (800) 421-1244
Carson, CA 90746 Fax (310) 537-3927
Contact: mq@multiquip.com

Service Department

800-421-1244 Fax: 310-537-4259
310-537-3700

Technical Assistance

800-478-1244 Fax: 310-943-2238

MQ Parts Department

800-427-1244 Fax: 800-672-7877
310-537-3700 Fax: 310-637-3284

Warranty Department

800-421-1244 Fax: 310-943-2249
310-537-3700

CANADA

Multiquip

4110 Industriel Boul. Tel: (450) 625-2244
Laval, Quebec, Canada H7L 6V3 Tel: (877) 963-4411
Contact: jmartin@multiquip.com Fax: (450) 625-8664

UNITED KINGDOM

Multiquip (UK) Limited Head Office

Unit 2, Northpoint Industrial Estate, Tel: 0161 339 2223
Globe Lane, Fax: 0161 339 3226
Dukinfield, Cheshire SK16 4UJ
Contact: sales@multiquip.co.uk

© COPYRIGHT 2015, MULTIQUIP INC.

Multiquip Inc and the MQ logo are registered trademarks of Multiquip Inc. and may not be used, reproduced, or altered without written permission. All other trademarks are the property of their respective owners and used with permission.

The information and specifications included in this publication were in effect at the time of approval for printing. Illustrations, descriptions, references and technical data contained in this document are for guidance only and may not be considered as binding. Multiquip Inc. reserves the right to discontinue or change specifications, design or the information published in this publication at any time without notice and without incurring any obligations.

Your Local Dealer is:

