

OPERATION AND PARTS MANUAL



MODEL J36E2 WALK-BEHIND TROWEL (2 HP ELECTRIC MOTOR)

S/N LE0118039 AND BELOW

Revision #2 (01/31/18)

To find the latest revision of this
publication, visit our website at:
www.multiquip.com



THIS MANUAL MUST ACCOMPANY THE EQUIPMENT AT ALL TIMES.

PN: 23814

NOTICE

Support is no longer available for J36E2 operation at 115 volts. If your J36E2 trowel is configured for 115-volt operation (S/N LE0118039 and below), it will need to be rewired for 230-volt operation. Please see the attached Safety Warning and Service Bulletin for details.

NOTICE

For current operation and/or parts information for the J36E2 Walk-Behind Trowel, go to www.multiquip.com and refer to the operation and parts manuals for the J36E2 (S/N LE0118040 and above).

SAFETY WARNING

Date: 10/16/19
To: Electric Walk-Behind Trowel Owners
From: Multiquip Product Department
Subject: Only Operating J36E2/J42E on 230 VAC



Dear Multiquip Customer,

Our records indicate you purchased an MQ Whiteman power trowel equipped with a 2.0 hp electric motor rated for 115-volt or 230-volt operation. This type of trowel is identified by the following model numbers: J42E and J36E2.

These trowels were originally manufactured to operate at 115 volts with the optional capacity to operate at 230 volts.

One of the safety features of the trowel is the Operator Presence ON/OFF Lever Switch. When the lever is released, power to the electric motor will be interrupted.

We have learned that the electric switch that enables power interruption is underrated for the electrical current required for safe operation at 115 volts. In rare circumstances, electrical contacts in the switch may fail, preventing the Operator Presence ON/OFF Lever Switch from operating as intended. Failure of the switch could result in a runaway trowel and SERIOUS INJURY and/or property damage.

Multiquip is unaware of any reports of electric switch failure resulting in the failure of the Operator Presence ON/OFF Lever Switch. However, we believe it is necessary to bring this to your attention as a safety precaution.

If you own any of these models listed above, use the trowel only in its 230-volt configuration and for 230-volt operation only. **DO NOT CONTINUE OPERATING THE TROWEL USING 115-VOLT POWER.** Conversion (rewiring) to 230-volt operation should be done only by a qualified technician or a Multiquip service center.

Is a replacement micro-switch available that permits operation using 115-volt power?

No. At this time a replacement switch is not available.

What if I have sold the trowel?

Please forward this Notice or a color copy of this Notice to, or provide us with contact information for, the new owner or retail purchaser.

How do I rewire the motor to 230 volts?

The conversion should only be done by a qualified technician or equipment service center. If you need assistance locating a service center please call the Multiquip warranty department at 800-421-1244 or email us at techsupport@multiquip.com.

Is this campaign covered under warranty?

Yes. If the original product warranty period has expired, Multiquip will extend the new product limited warranty to cover conversion costs in accordance with this campaign. See Warranty Information below.

WARRANTY INFORMATION

File your claim online via E-Warranty at <http://service.multiquip.com/warranty-support.html> or contact our warranty department for assistance at 800-421-1244.

Campaign: Reference No. TR20190823

Labor Allowance: 1.0 hour total flat rate for rewire of unit from 115 VAC to 230 VAC.

Your prompt attention to this matter is appreciated. If you have questions, please contact the Multiquip Technical Support Department at 800-478-1244 or techsupport@multiquip.com.

We appreciate your business and apologize for any inconvenience this creates. Our goal remains to supply you with top-quality equipment and superior product support.



Service Bulletin

Electric Walk-Behind Trowel 230V Wiring Update

Product Group: Trowels	Date Issued: 10/16/19	Expiration Date: N/A	Service Bulletin No. TR20190823
Bulletin Type <input checked="" type="checkbox"/> Mandatory <input type="checkbox"/> Information Only <input type="checkbox"/> Recommended Change		Models/Series Affected: J36E2 S/N LE0118039 AND BELOW J42E S/N ZD0158011 AND BELOW	

Details

Problem:

We have learned that the electric switch that enables power interruption is underrated for the electrical current required for safe operation at 115 volts. In rare circumstances, electrical contacts in the switch may fail, preventing the Operator Presence ON/OFF Lever Switch from operating as intended. Failure of the switch could result in a runaway trowel and SERIOUS INJURY and/or property damage.

Solution:

If you own any of these models listed above, use the trowel only in its 230-volt configuration and for 230-volt operation only. **DO NOT CONTINUE OPERATING THE TROWEL USING 115-VOLT POWER.** Conversion (rewiring) to 230-volt operation should be done only by a qualified technician or a MultiQuip service center.

Parts Information

Item	Part No.	Description	Qty.	Remarks
1	30721	Kit, 230V Wiring, Electric WBT	1	Includes items 2-6
2	19688	Insulator, Splice Cap	2	
3	19687	Crimp, Sleeve	2	
4	34938	Wire Nut, Pre-Insulated Crimp 16-12 AWG	2	
5	30718	Assembly, Pig Tail, 230V	1	
6	30096	Terminal, Ring, 12-10 AWG, #8	3	

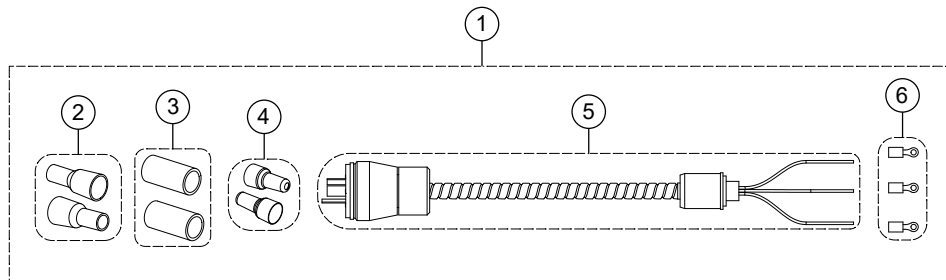


Figure 1. Electric Walk-Behind Trowel 230V Wiring Kit Components

WORK SAFELY!

Only a qualified service technician with proper training should perform this procedure. Follow all shop safety rules while performing this procedure.

REQUIRED TOOLS

- Flat-head screwdriver
- Phillips-head screwdriver
- Wire strippers/crimpers/cutters

PREPARATION

Place the trowel on secure, level ground in an area free of dirt and debris. Make sure the motor is turned **OFF**.

EXISTING PLUG REMOVAL

1. Remove the two screws securing the switch box cover to the front of the main switch box (Figure 2). Keep the screws for later.

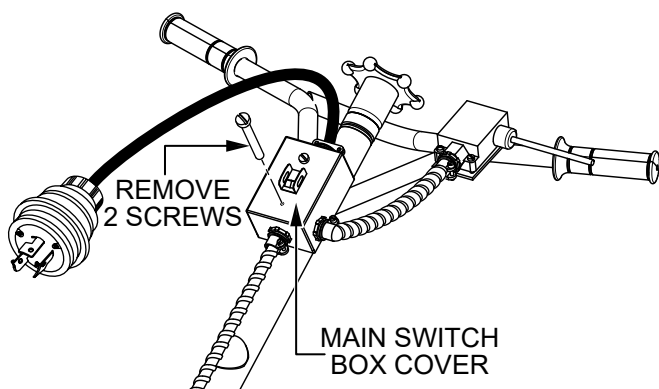


Figure 2. Remove Main Switch Box Cover

2. Open the main switch box and disconnect the three power cable wires (Figure 3).

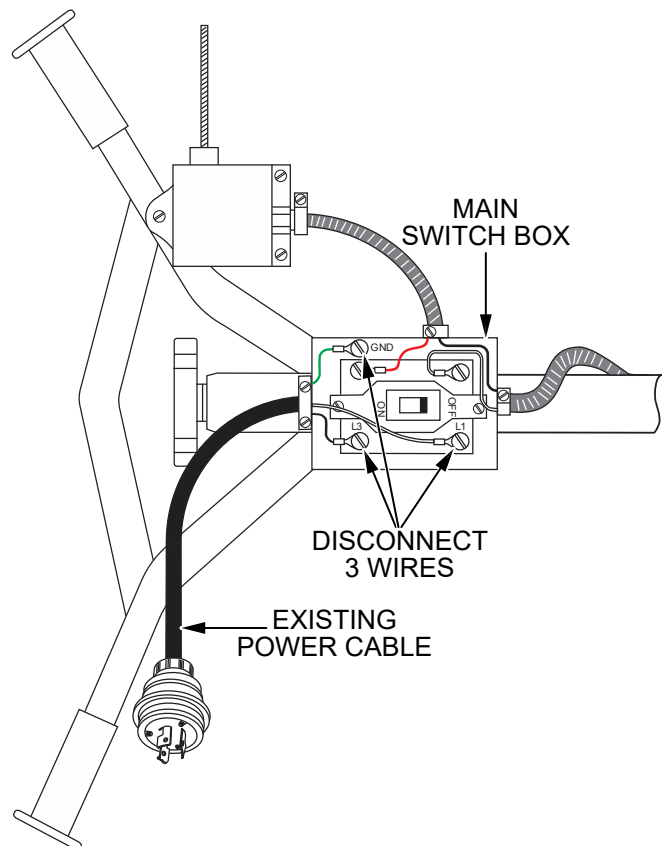


Figure 3. Disconnect Power Cable Wires

3. Remove the two small screws (Figure 4) securing the existing power cable fitting to the main switch box.

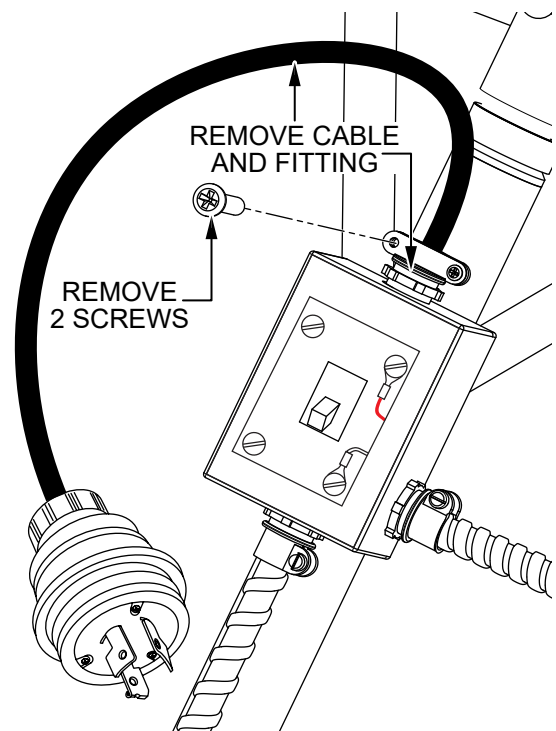


Figure 4. Remove Existing Power Cable Assembly

4. Remove and discard the existing power cable and fitting (Figure 4).

NEW PLUG INSTALLATION

1. Locate the 230V pigtail assembly (P/N 30718). Strip the insulation back 1/4" from the end of each of the three pigtail assembly wires (Figure 5).

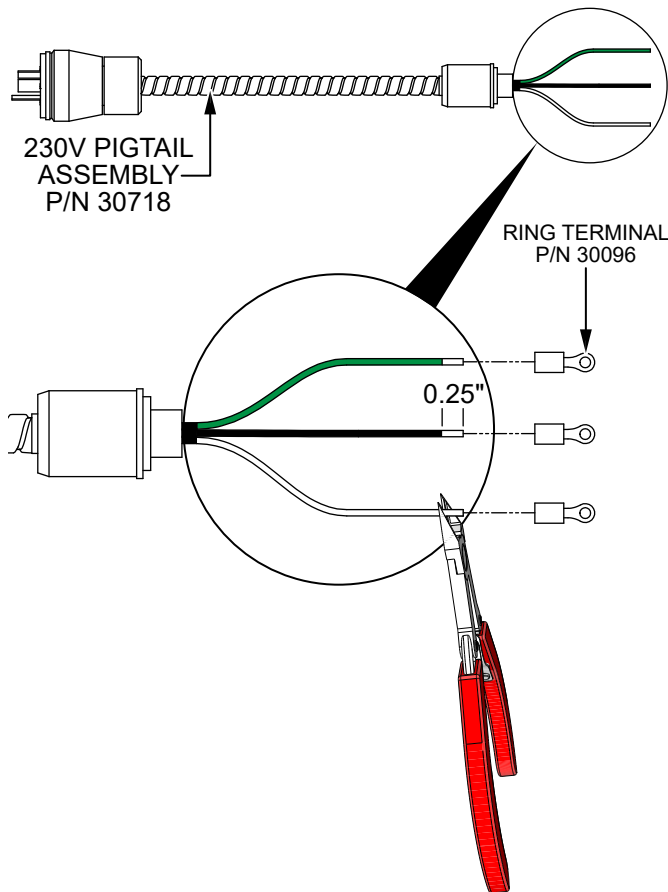


Figure 5. Install Ring Terminals

2. Place a ring terminal (P/N 30096) onto the end of each of the three pigtail assembly wires and crimp. See Figure 5.

3. Connect the three pigtail assembly wires inside the main switch box as shown in Figure 6.

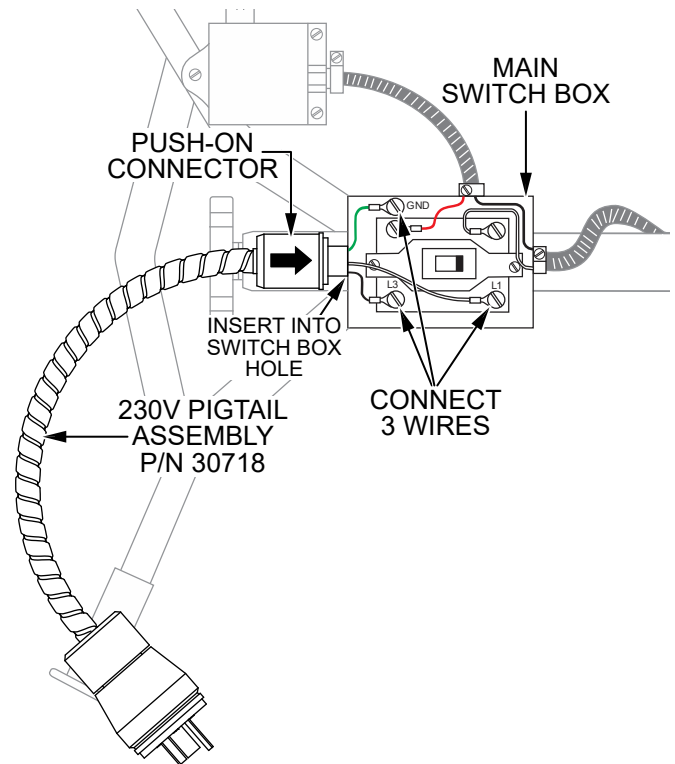


Figure 6. Install New Power Cable

4. Finish installing the 230V pigtail assembly (P/N 30718) by inserting the push-on liquid-tight connector into the open hole on the main switch box. Make sure the connector is fully seated in the hole. See Figure 6.
5. Reinstall the switch cover using the two screws that were removed earlier.

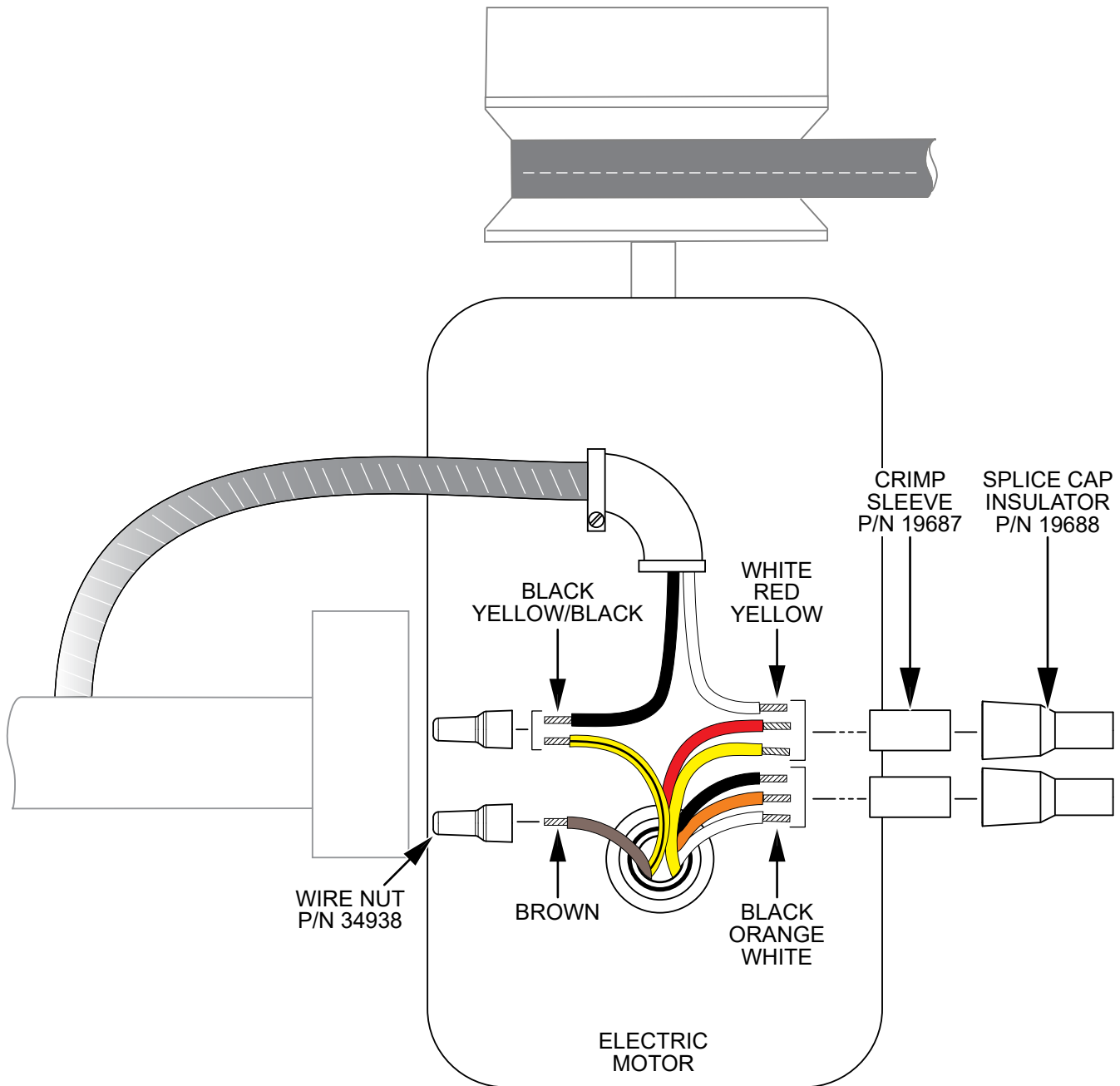


Figure 7. Motor Wiring

MOTOR WIRING

1. Connect the black, orange, and white motor wires as shown in Figure 7 using a crimp sleeve (P/N 19687) and splice cap insulator (P/N 19688).
2. Connect the red and yellow wires from the motor with the white wire from the handle using a crimp sleeve (P/N 19687) and splice cap insulator (P/N 19688). See Figure 7.
3. Connect the yellow/black wire from the motor with the black wire from the handle using a pre-insulated crimp 16-12 AWG wire nut (P/N 34938). See Figure 7.
4. Use the remaining pre-insulated crimp 16-12 AWG wire nut (P/N 34938) to cap off the brown wire from the motor. See Figure 7.

MATING CONNECTOR SELECTION

To connect the plug to a 240VAC receptacle, use an extension cord with a NEMA L6-20R twist-lock mating connector and a 12/3 wire gauge.



Service Bulletin

Electric Walk-Behind Trowel 230V Wiring Update

HERE'S HOW TO GET HELP

PLEASE HAVE THE MODEL AND SERIAL
NUMBER ON-HAND WHEN CALLING

UNITED STATES

Multiquip Inc.

(310) 537- 3700
6141 Katella Avenue Suite 200
Cypress, CA 90630
E-MAIL: mq@multiquip.com
WEBSITE: www.multiquip.com

CANADA

Multiquip

(450) 625-2244
4110 Industriel Boul.
Laval, Quebec, Canada H7L 6V3
E-MAIL: infocanada@multiquip.com

UNITED KINGDOM

Multiquip (UK) Limited Head Office

0161 339 2223
Unit 2, Northpoint Industrial Estate,
Globe Lane,
Dukinfield, Cheshire SK16 4UJ
E-MAIL: sales@multiquip.co.uk

© COPYRIGHT 2019, MULTIQUIP INC.

Multiquip Inc and the MQ logo are registered trademarks of Multiquip Inc. and may not be used, reproduced, or altered without written permission. All other trademarks are the property of their respective owners and used with permission.

The information and specifications included in this publication were in effect at the time of approval for printing. Illustrations, descriptions, references and technical data contained in this document are for guidance only and may not be considered as binding. Multiquip Inc. reserves the right to discontinue or change specifications, design or the information published in this publication at any time without notice and without incurring any obligations.

Your Local Dealer is:

