

PARTS MANUAL



JTNSW20HTCSL JTNSW24HTCSL RIDE-ON POWER TROWEL (HONDA GX630RQZB2-R280, HONDA GX690RQZB2-R280 GASOLINE ENGINE)

Revision #1 (03/24/16)

To find the latest revision of this
publication, visit our website at:
www.multiquip.com



THIS MANUAL MUST ACCOMPANY THE EQUIPMENT AT ALL TIMES.

P/N: 24408

JTNSW20HTCSL JTNSW24HTCSL Ride-On Power Trowel

Table Of Contents	2
Explanation Of Code In Remarks Column.....	4
Suggested Spare Parts	5

Component Drawings

Nameplate And Decals	6-7
Steering Assembly (Left-Side)	8-9
Steering Assembly (Right-Side)	10-11
Left-Side Pivot Assembly	12-13
Right-Side Pivot Assembly	14-15
Jtnsw Gearbox Assembly (Left-Side)	16-17
Jtnsw Gearbox Assembly (Right-Side)	18-19
Pitch Control Tower Assembly	20-23
Pitch Control Drive Cable Assembly	24-25
Fuel Tank Assembly	26-27
Drive Assembly	28-29
Engine Mounting And Clutch Assembly	30-31
Engine Components	32-33
Spider Assembly (Left)	34-35
Spider Assembly (Right)	36-37
Seat Frame Assembly	38-39
Foot Pedal Assembly	40-41
Battery Assembly	42-43
Spray Tank Assembly	44-45
Lights Assembly	46-47
Front Panel Assembly	48-49
Harness Assembly	50-51
E-Z Mover And Lift Handle Assembly	52-53
Terms And Conditions Of Sale — Parts	54

NOTICE

Specifications and part numbers are subject to change without notice.

[illegible]

EXPLANATION OF CODE IN REMARKS COLUMN

The following section explains the different symbols and remarks used in the Parts section of this manual. Use the help numbers found on the back page of the manual if there are any questions.

NOTICE

The contents and part numbers listed in the parts section are subject to change **without notice**. Multiquip does not guarantee the availability of the parts listed.

SAMPLE PARTS LIST

NO.	PART NO.	PART NAME	QTY.	REMARKS
1	12345	BOLT	1	INCLUDES ITEMS W/%
2%		WASHER, 1/4 IN.		NOT SOLD SEPARATELY
2%	12347	WASHER, 3/8 IN. ...	1	MQ-45T ONLY
3	12348	HOSE		A/R ...MAKE LOCALLY
4	12349	BEARING	1	S/N 2345B AND ABOVE

NO. Column

Unique Symbols — All items with same unique symbol (@, #, +, %, or >) in the number column belong to the same assembly or kit, which is indicated by a note in the “Remarks” column.

Duplicate Item Numbers — Duplicate numbers indicate multiple part numbers, which are in effect for the same general item, such as different size saw blade guards in use or a part that has been updated on newer versions of the same machine.

NOTICE

When ordering a part that has more than one item number listed, check the remarks column for help in determining the proper part to order.

PART NO. Column

Numbers Used — Part numbers can be indicated by a number, a blank entry, or TBD.

TBD (To Be Determined) is generally used to show a part that has not been assigned a formal part number at the time of publication.

A blank entry generally indicates that the item is not sold separately or is not sold by Multiquip. Other entries will be clarified in the “Remarks” Column.

QTY. Column

Numbers Used — Item quantity can be indicated by a number, a blank entry, or A/R.

A/R (As Required) is generally used for hoses or other parts that are sold in bulk and cut to length.

A blank entry generally indicates that the item is not sold separately. Other entries will be clarified in the “Remarks” Column.

REMARKS Column

Some of the most common notes found in the “Remarks” Column are listed below. Other additional notes needed to describe the item can also be shown.

Assembly/Kit — All items on the parts list with the same unique symbol will be included when this item is purchased.

Indicated by:

“INCLUDES ITEMS W/(unique symbol)”

Serial Number Break — Used to list an effective serial number range where a particular part is used.

Indicated by:

“S/N XXXXX AND BELOW”

“S/N XXXX AND ABOVE”

“S/N XXXX TO S/N XXX”

Specific Model Number Use — Indicates that the part is used only with the specific model number or model number variant listed. It can also be used to show a part is NOT used on a specific model or model number variant.

Indicated by:

“XXXXX ONLY”

“NOT USED ON XXXX”

“Make/Obtain Locally” — Indicates that the part can be purchased at any hardware shop or made out of available items. Examples include battery cables, shims, and certain washers and nuts.

“Not Sold Separately” — Indicates that an item cannot be purchased as a separate item and is either part of an assembly/kit that can be purchased, or is not available for sale through Multiquip.

SUGGESTED SPARE PARTS

JTNSW20HTCSL/JTNSW24HTCSL RIDE-ON POWER TROWELS

1 to 3 units

Qty.	P/N	Description
2.....	22762.....	HANDLE GRIP W/HOLE
2.....	2584.....	SWITCH
2.....	2008.....	CABLE PITCH
1.....	24090.....	LEVER ASSY., TROWEL ADJ.
1.....	24092.....	KNOB, KIT
1.....	24214.....	CAP, FUEL
2.....	24417-V37.....	V-BELT, VULCRO POWER II
2.....	10968.....	THRUST BEARING KIT
4.....	2826-G.....	ARM TROWEL, GREEN 9-3/4"
2.....	1555-G.....	RH, TROWEL ARM, GREEN
2.....	1163-G.....	LEVER, TROWEL, RH, GREEN
8.....	1157 A.....	BUSHING, TROWEL ARM
4.....	1316.....	SPRING, LS ARM RETURN
4.....	1317.....	SPRING, RS ARM RETURN
4.....	1875.....	WASHER, INT. SHKP, 3/8"
4.....	1322.....	SCREW ASSY., RETAINING ZERK
2.....	11876-G.....	SPIDER PLATE, 1-1/8" SHAFT 4-BLD, GREEN
4.....	24227.....	CAP, GREASE ZERK
1.....	24224.....	FUEL CAP, RED
2.....	35110ZV5V50.....	KEYS, IGNITION
3.....	20111.....	GEARBOX LUBRICATION OIL (22 OZ. BOTTLE)
1.....	24209.....	CIRCUIT BREAKER, 30A, 12V
1.....	24210.....	RELAY, KILL
1.....	24208.....	LIGHT ASSY., RECTANGULAR W/CONNECTIONS

GX630RQZB2 GASOLINE ENGINE

1 to 3 units

Qty.	P/N	Description
3.....	17218Z6L000.....	AIR FILTER, OUTER
3.....	17210Z6L010.....	ELEMENT AIR FILTER COMP.
6.....	980795587G.....	SPARK PLUG (ZFR5F)
3.....	15410Z6L800.....	CARTRIDGE, OIL FILTER
3.....	16910Z6L003.....	FUEL FILTER, IN-LINE
2.....	9820044300.....	FUSE, 30 AMP

GX690RTAF GASOLINE ENGINE

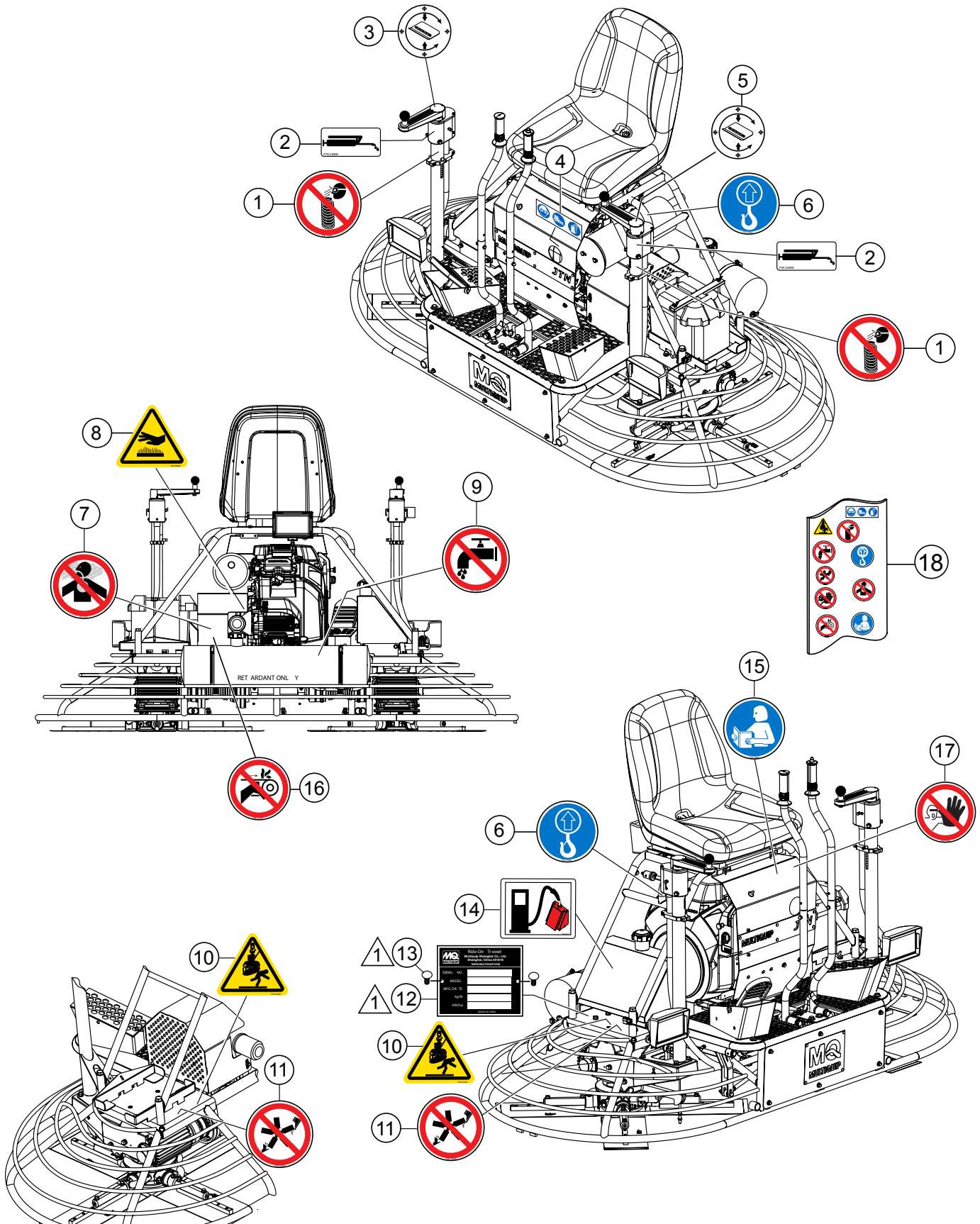
1 to 3 units

Qty.	P/N	Description
3.....	17218Z6L000.....	AIR FILTER, OUTER
3.....	17210Z6L010.....	ELEMENT AIR FILTER COMP.
6.....	980795587G.....	SPARK PLUG (ZFR5F)
3.....	15400RTA004.....	CARTRIDGE, OIL FILTER
3.....	16910Z6L003.....	FUEL FILTER, IN-LINE
2.....	9820044300.....	FUSE, 30 AMP

NOTICE

Part numbers on this Suggested Spare Parts list may supersede/replace the part numbers shown in the following parts lists.

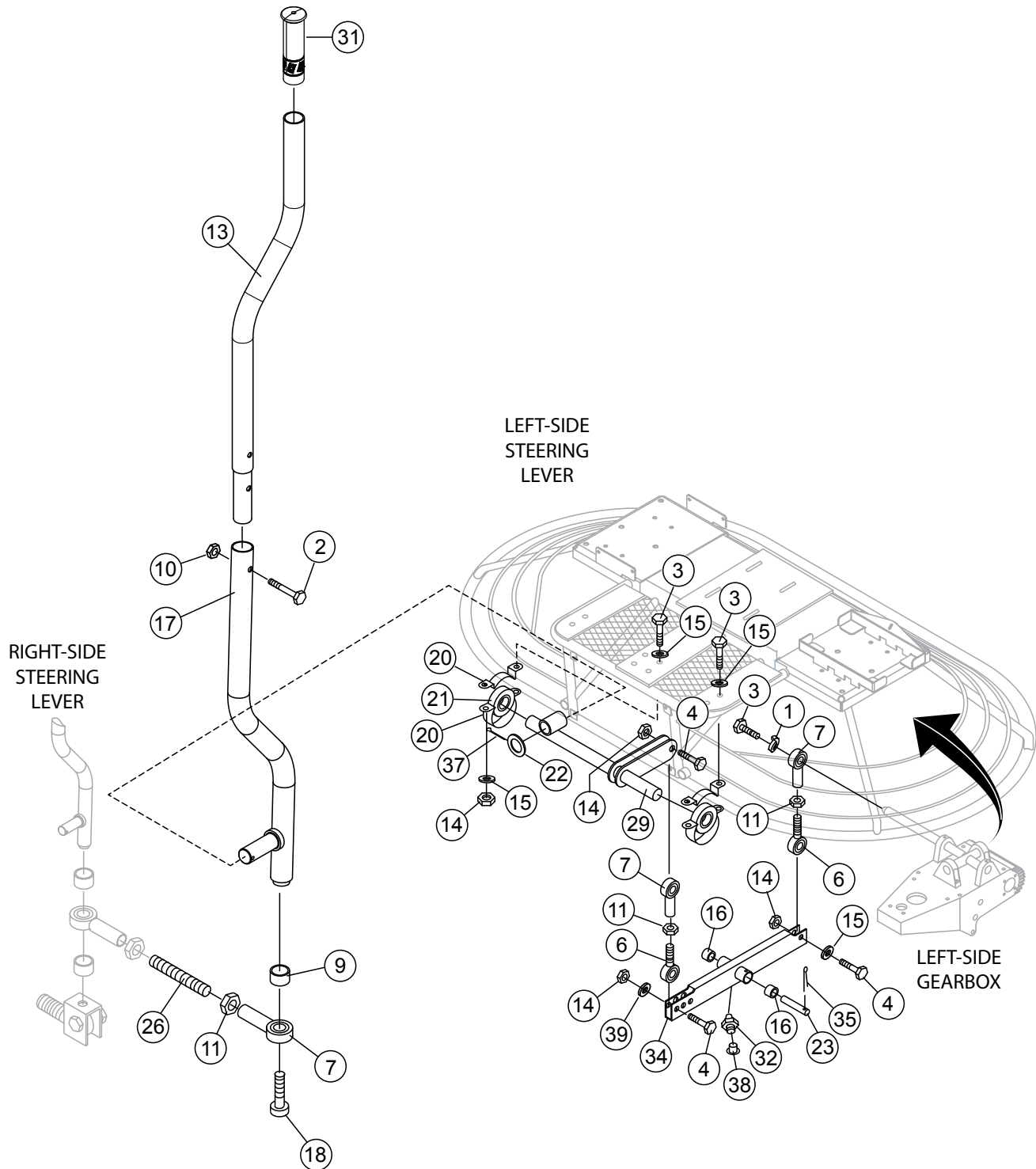
NAMEPLATE AND DECALS



NAMEPLATE AND DECALS

<u>NO.</u>	<u>PART NO.</u>	<u>PART NAME</u>	<u>QTY.</u>	<u>REMARKS</u>
1	23804	DECAL, DO NOT DISASSEMBLE HAZARD	2	
2	23809	DECAL, LUBRICATION POINT	2	
3	24402	DECAL, PITCH RH	1	
4	36099	DECAL, PROTECTIVE CLOTHING	1	
5	24403	DECAL, PITCH LH	1	
6	23805	DECAL, LIFT LOCATION	2	
7	23810	DECAL, INHALATION HAZARD	1	
8	23808	DECAL, HOT SURFACE HAZARD	2	
9	23811	DECAL, WARNING, NO WATER	1	
10	23700	DECAL, LIFT/CRUSH HAZARD	2	
11	23698	DECAL, ROTATING BLADE HAZARD	2	
12		SERIAL PLATE	1CONTACT MQ PARTS DEPT.
13	4014	SCREW, 2-3/16 P-K TYPE U-DRIVE	2	
14	23812	DECAL, FUEL GASOLINE	1	
15	23699	DECAL, READ MANUAL	1	
16	23704	DECAL, GUARD WARNING	1	
17	23701	DECAL, ASK FOR TRAINING	1	
18	23659	KIT, DECAL	1	

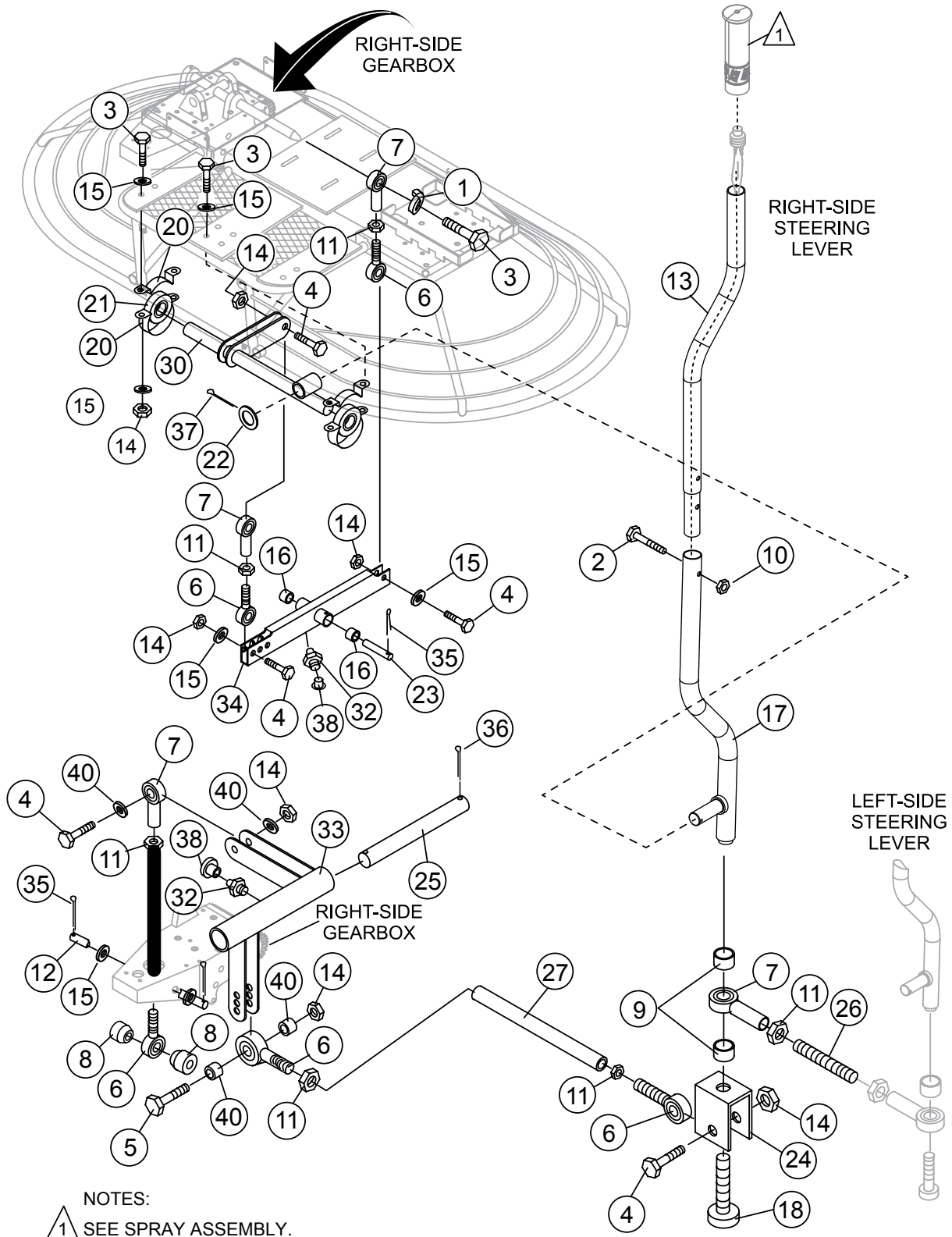
STEERING ASSY. (LEFT-SIDE)



STEERING ASSY. (LEFT-SIDE)

<u>NO.</u>	<u>PART NO.</u>	<u>PART NAME</u>	<u>QTY.</u>	<u>REMARKS</u>
1	0166 A	WASHER, LOCK, 3/8" MED.	1	
2	0424	SCREW, HHC 1/4-20 X 1-1/4"	1	
3	1023	SCREW, HHC 3/8-16 X 1-1/4" GRD 5	8	
4	1284	SCREW, HHC 3/8-16 X 1-1/2"	4	
6	2063	ROD END, 3/8-24 MALE RH	3	
7	2064	ROD END, 3/8-24 FEMALE RH	3	
9	2196	SPACER	1	
10	10024	NUT, NYLOC 1/4-20	1	
11	2199	NUT, HEX JAM 3/8-24	3	
13	24430	HANDLE TUBE	1	
14	10133	NUT, NYLOC 3/8-16	11	
15	10136	WASHER, FLAT SAE 3/8"	18	
16	11072	BEARING, NEEDLE	1	
17	24432	HANDLE, LOWER	1	
18	23898	SCREW, SHC 3/8-16 x 2" NON-PLTD	1	
20	11138	BEARING, HOUSING	2	
21	11149	BEARING, INSERT	2	
22	11265	WASHER, STEERING HANDLE	1	
23	11275	PIN, 3/8" DIA X 3"	1	
26	11498	THREADPIECE, CONN. STEERING	1	
28	12408	BUSHING	2	
29	24437	STEERING CONTROL, LS	1	
31	22762	GRIP, HANDLE, W/ HOLE	1	
32	24110	FITTING, GREASE ZERK 45°	1	
34	24134	LEVER, STEERING CONTROL	1	
35	24193	PIN, COTTER, 2.5MM X 30MM	1	
37	24195	PIN, COTTER, 4MM X 35MM	1	
38	24227	CAP, GREASE ZERK	1	

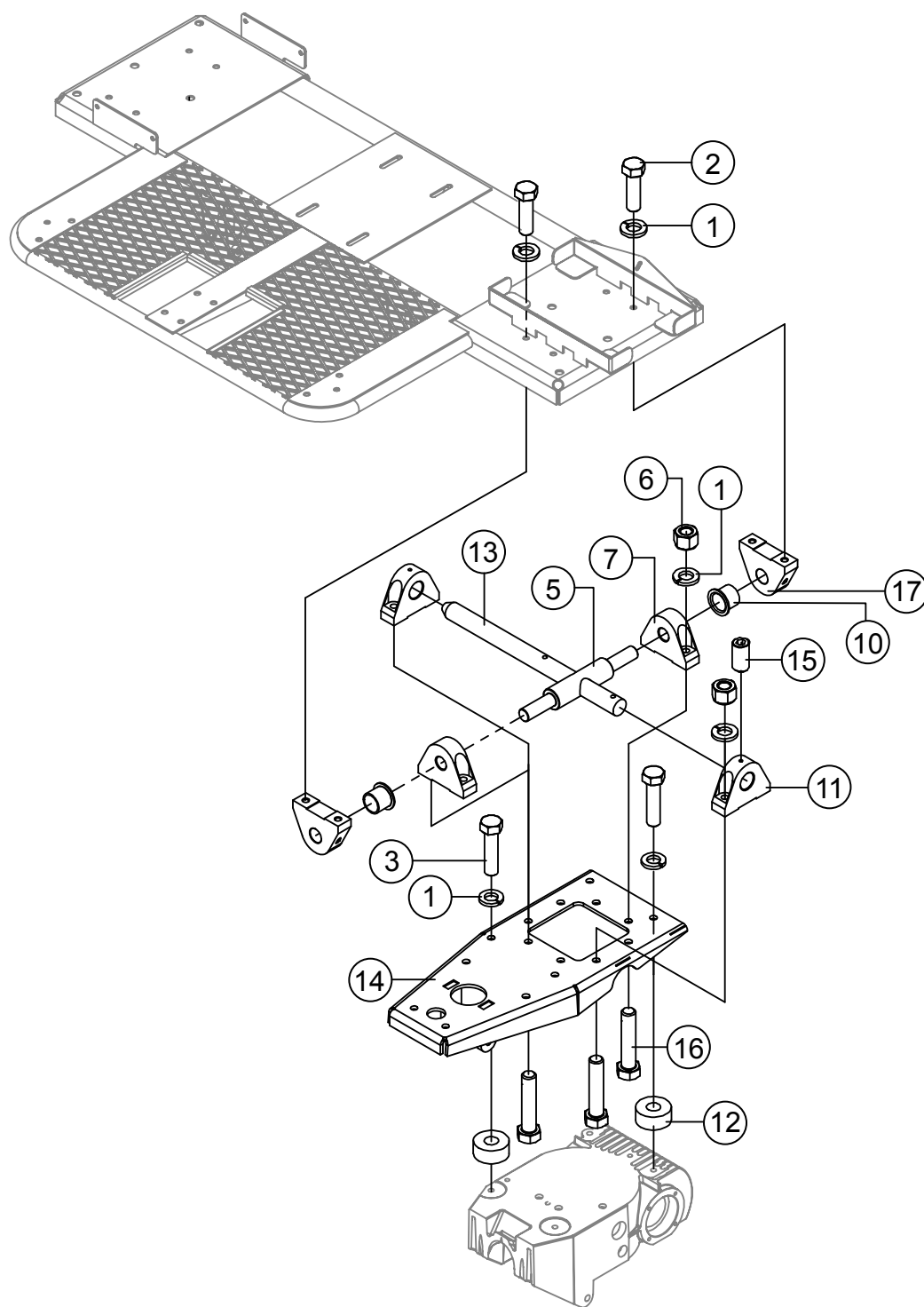
STEERING ASSY. (RIGHT-SIDE)



STEERING ASSY. (RIGHT-SIDE)

<u>NO.</u>	<u>PART NO.</u>	<u>PART NAME</u>	<u>QTY.</u>	<u>REMARKS</u>
1	0166 A	WASHER, LOCK, 3/8" MED.	1	
2	0424	SCREW, HHC 1/4-20 X 1-1/4"	1	
3	1023	SCREW, HHC 3/8-16 X 1-1/4" GRD 5	8	
4	1284	SCREW, HHC 3/8-16 X 1-1/2"	7	
6	2063	ROD END, 3/8-24 MALE RH	4	
7	2064	ROD END, 3/8-24 FEMALE RH	4	
8	24122	SPACER	2	
9	2196	SPACER	2	
10	10024	NUT, NYLOC 1/4-20	1	
11	2199	NUT, HEX JAM 3/8-24	6	
12	24133	PIN, 3/8" x 3.550" L	1	
13	24430	HANDLE TUB	1	
14	10133	NUT, NYLOC 3/8-16	6	
15	10136	WASHER, FLAT SAE 3/8"	4	
16	11072	BEARING, NEEDLE	2	
17	24432	HANDLE, LOWER	1	
18	23898	SCREW, SHC 3/8-16 x 2" NON-PLTD	1	
20	11138	BEARING, HOUSING	2	
21	11149	BEARING, INSERT	2	
22	11265	WASHER, STEERING HANDLE	1	
23	11275	PIN, 3/8" DIA X 3"	1	
24	24435	BRACKET, L/R MOTION ROD	1	
25	11497	SHAFT, L/R, MOTION LEVER	1	
26	11498	THREADPIECE, CONN. STEERING	1	
27	24436	ROD, L/R, LINKAGE	1	
28	12408	BUSHING	2	
30	24438	STEERING CONTROL, RS	1	
31	23666	GRIP, HANDLE W/ 5/8" HOLE	1	
32	24110	FITTING, GREASE ZERK 45 DEG	2	
33	24365	RIGHT-LEFT MOTION CONTROL ARM	1	
34	24134	LEVER, STEERING CONTROL	1	
35	24193	PIN, COTTER, 2.5MM X 30MM	3	
36	24194	PIN, COTTER 3MM X 40MM	1	
37	24195	PIN, COTTER, 4MM X 35MM	2	
38	24227	CAP, GREASE ZERK	2	
40	13351	WASHER, FLAT 3/8 EXT THICK HIGH STR.	4	

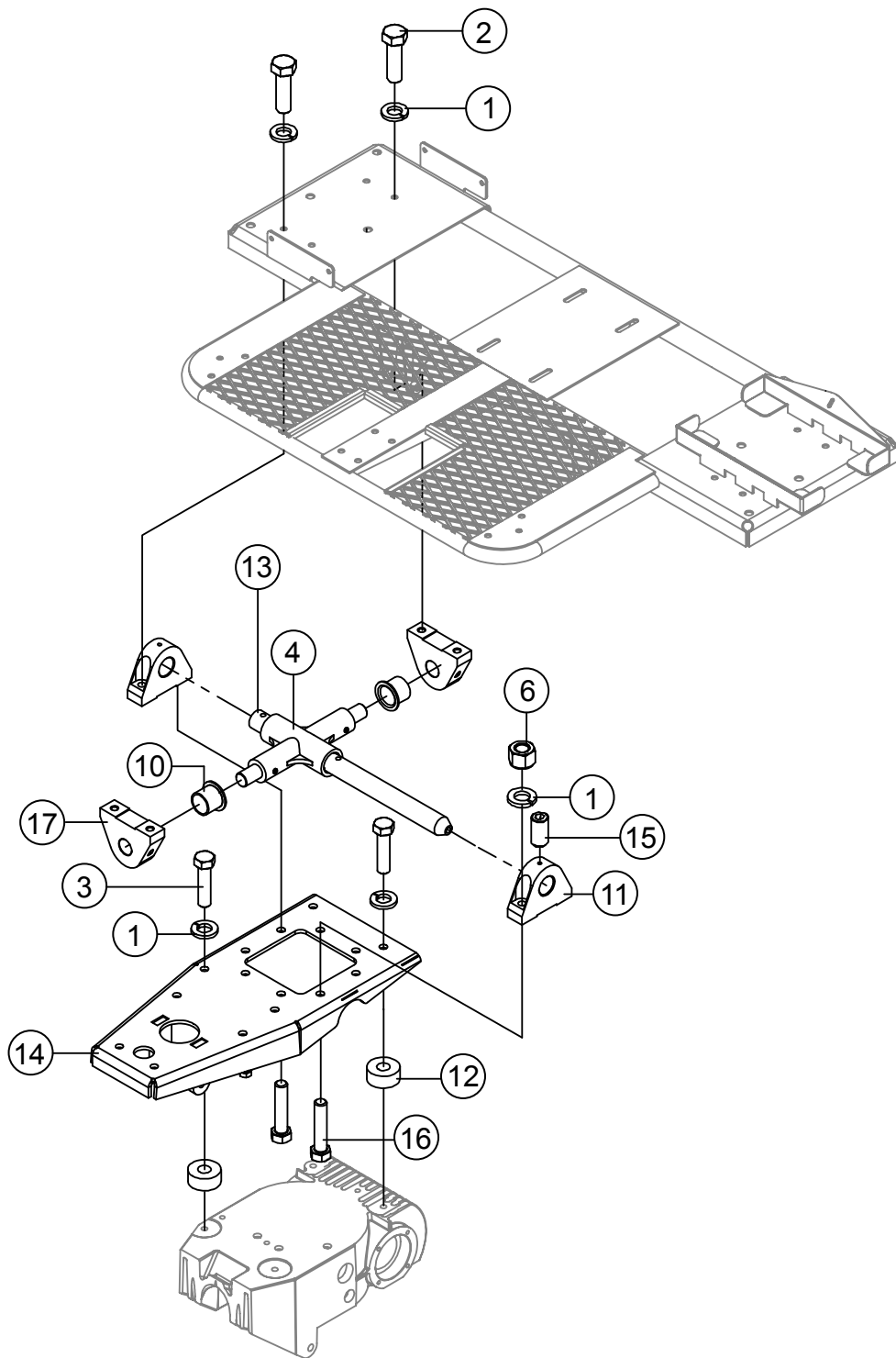
LEFT-SIDE PIVOT ASSY.



LEFT-SIDE PIVOT ASSY.

<u>NO.</u>	<u>PART NO.</u>	<u>PART NAME</u>	<u>QTY.</u>	<u>REMARKS</u>
1	0166 A	WASHER, LOCK, 3/8" MED.	16	
2	1023	SCREW, HHC 3/8-16 X 1-1/4" GRD 5	4	
3	1284	SCREW, HHC 3/8-16 X 1-1/2"	4	
5	2076	TUBE, PIVOT LH	1	
6	10133	NUT, NYLOC 3/8-16	8	
7	10973	ROCKER BLOCK	2	
10	12408	BUSHING	2	
11	24089	ROCKER BLOCK	2	
12	24099	SPACER	4	
13	24139	TUBE, CONTROL PIVOT 1"	1	
14	24168	PLATE, GEARBOX ADAPTOR	1	
15	24249	SCREW, SHS M6 X1.0 X 20MM	2	
16	9154	SCREW, HHC 3/8-16 X 1-3/4" GRD5	6	
17	392079	ROCKER BLOCK	2	

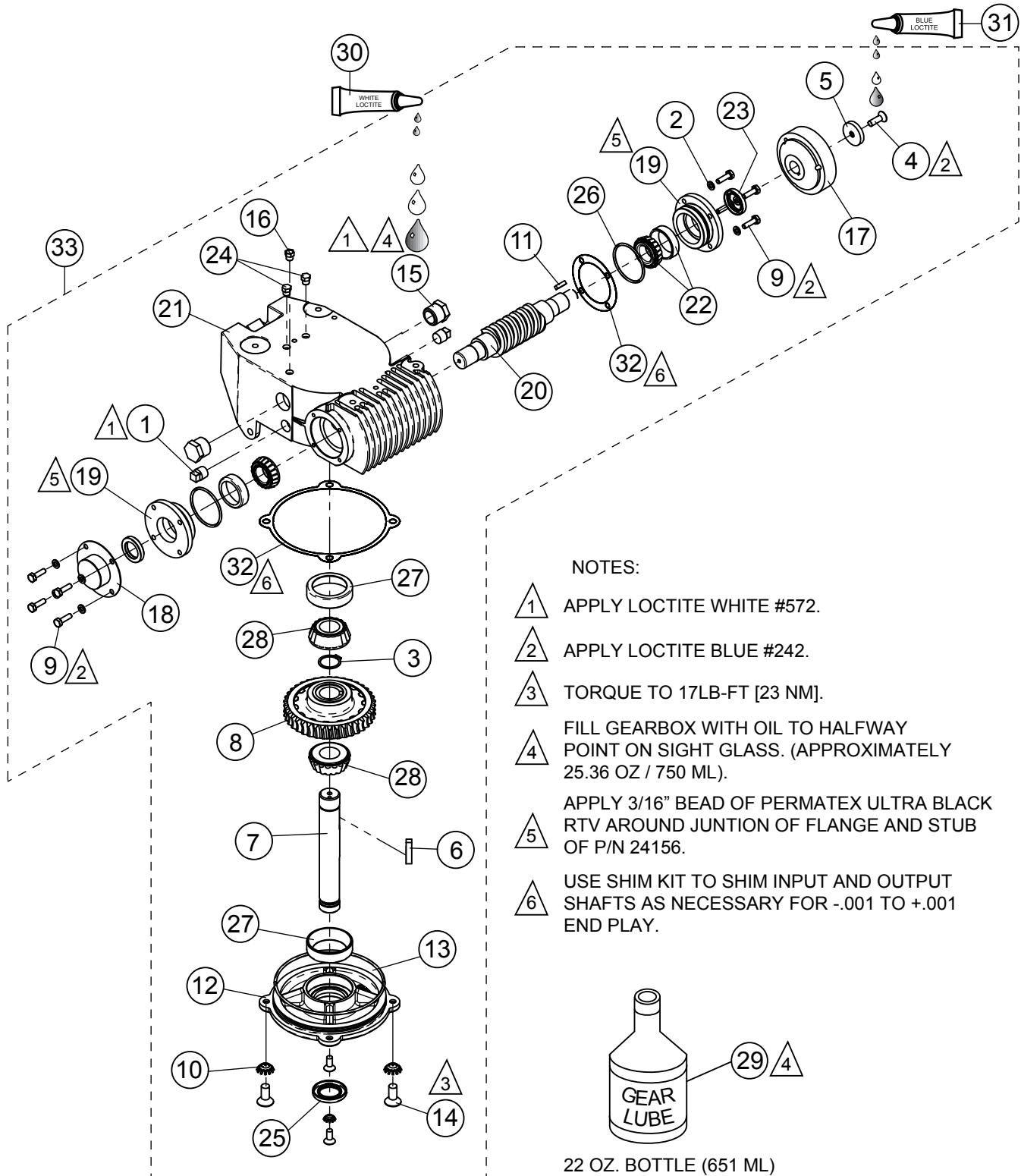
RIGHT-SIDE PIVOT ASSY.



RIGHT-SIDE PIVOT ASSY.

<u>NO.</u>	<u>PART NO.</u>	<u>PART NAME</u>	<u>QTY.</u>	<u>REMARKS</u>
1	0166 A	WASHER, LOCK, 3/8" MED.	12	
2	1023	SCREW, HHC 3/8-16 X 1-1/4" GRD 5	4	
3	1284	SCREW, HHC 3/8-16 X 1-1/2"	4	
4	2044	ARM, PIVOT RH	1	
6	10133	NUT, NYLOC 3/8-16	4	
10	12408	BUSHING	2	
11	24089	ROCKER BLOCK	2	
12	24099	SPACER	4	
13	24139	TUBE, CONTROL PIVOT 1"	1	
14	24168	PLATE, GEARBOX ADAPTOR	1	
15	24249	SCREW, SHS M6 X 1.0 X 20MM	2	
16	9154	SCREW, HHC 3/8-16 X 1-3/4" GRD5	6	
17	392079	ROCKER BLOCK	2	

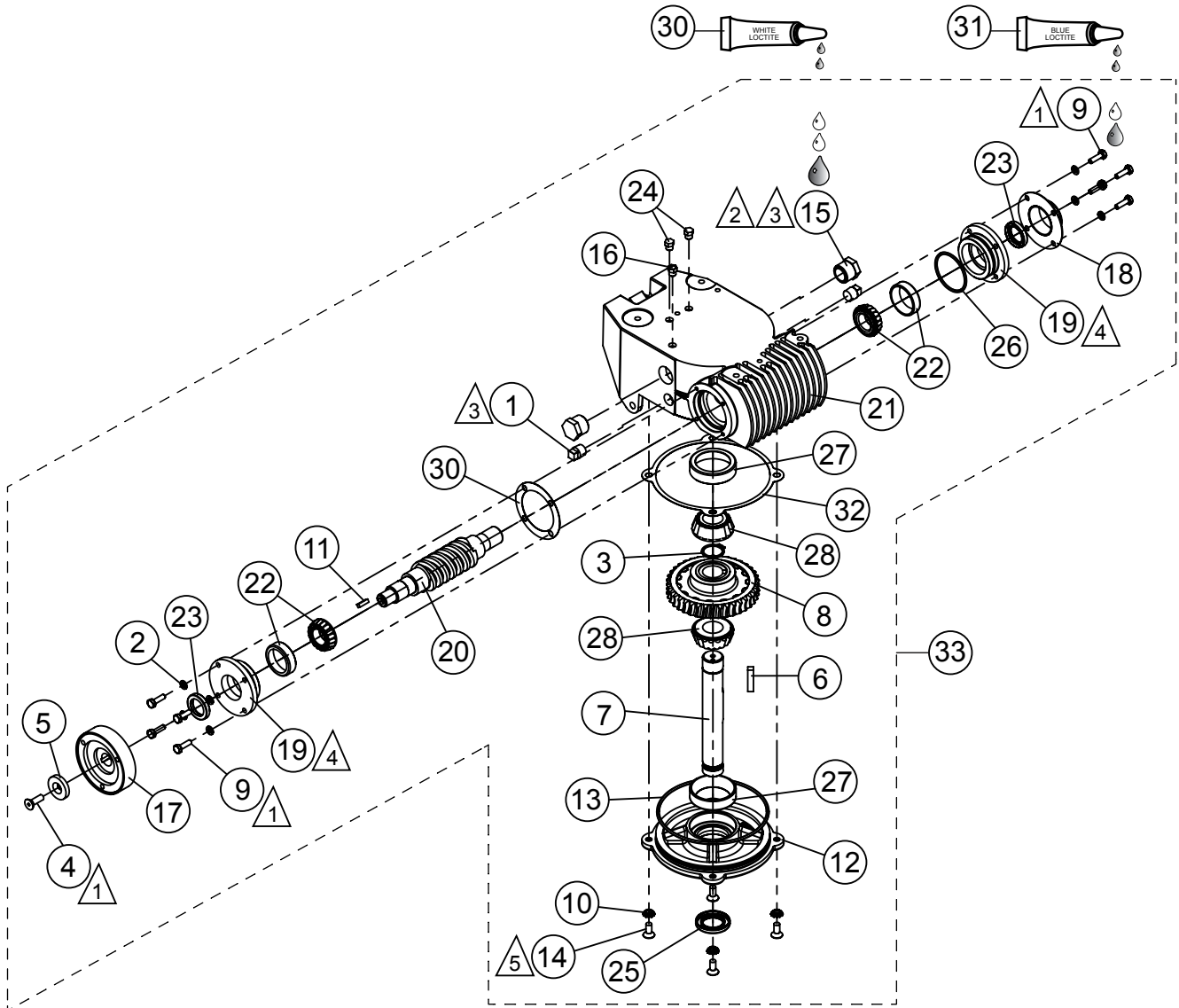
JTNSW GEARBOX ASSY. (LEFT-SIDE)



JTNSW GEARBOX ASSY. (LEFT-SIDE)

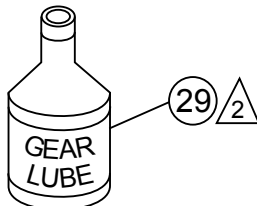
<u>NO.</u>	<u>PART NO.</u>	<u>PART NAME</u>	<u>QTY.</u>	<u>REMARKS</u>
1#	0121 A	PIPE PLUG 3/8"	2	
2#	0181 B	WASHER, LOCK 1/4" MED	8	
3#	1138	SNAP RING, EXTERNAL, 1-1/8" DIA	1	
4#	1146	SCREW, FHSC 5/16-18X1, NYLOC	5	
5#	2037	SPACER	1	
6#	2229	KEY, 5/16" X 1-7/16"	1	
7#	2231	SHAFT, OUTPUT	1	
8#	2250	GEAR, WORM, COMPOSITE, LH	1	
9#	2295	SCREW, HHC 1/4-20 X 7/8"	8	
10#	10235	WASHER, LOCK 5/16" EXT. TOOTH	4	
11#	10909	KEY, 3/16" SQ X 11/16"	1	
12#	24375	COVER, GEAR BOX	1	
13@#	20396	O-RING	1	
15#	21033	SIGHT GLASS	2	
16#	21218	VENT, AIR, GEAR BOX	1	
17#	24121	COUPLER, .75" ID	1	
18#	24141	COVER, GEARBOX	1	
19#	24156	FLANGE, INPUT SHAFT	2	
20#	24158	WORM GEAR, RH	1	
21#	24159	CASE, WORM GEAR, MACHINED	1	
22#	24206	BEARING, CONE AND CUP	2	
23@#	24323	SEAL, OIL, DUAL LIP, 3/4 SHAFT	2	
24#	24222	PLUG, 1/8 NPT, HEX SOCKET HEAD	2	
25@#	24254	SEAL, OIL DUAL LIP	1	
26@#	24279	O-RING	2	
27#	24286	CUP BEARING	2	
28#	24287	BEARING, CONE	2	
29	20111	OIL, MOBIL SHC 634/EP 460 22 OZ.	2	
30	60096	LOCTITE, #572 WHITE	1	
31	60091	LOCTITE, #242 BLUE	1	
32#	24292	KIT, SHIMS AND SEALS	1	INCLUDES ITEMS W/@
33	24277	GEARBOX ASSY., L.S.	1	INCLUDES ITEMS W/#

JTNSW GEARBOX ASSY. (RIGHT-SIDE)



NOTES:

- 1 APPLY LOCTITE BLUE #242.
- 2 FILL GEARBOX WITH OIL TO HALFWAY POINT ON SIGHT GLASS. (APPROXIMATELY 25.36 OZ / 750 ML).
- 3 APPLY LOCTITE WHITE #572.
- 4 APPLY 3/16" BEAD OF PERMATEX ULTRA BLACK RTV AROUND JUNCTION OF FLANGE AND STUB OF P/N 24156.
- 5 TORQUE TO 17LB-FT [23 Nm]
- 6 USE SHIM KIT TO SHIM INPUT AND OUTPUT SHAFTS AS NECESSARY FOR -.001 TO +.001 END PLAY.

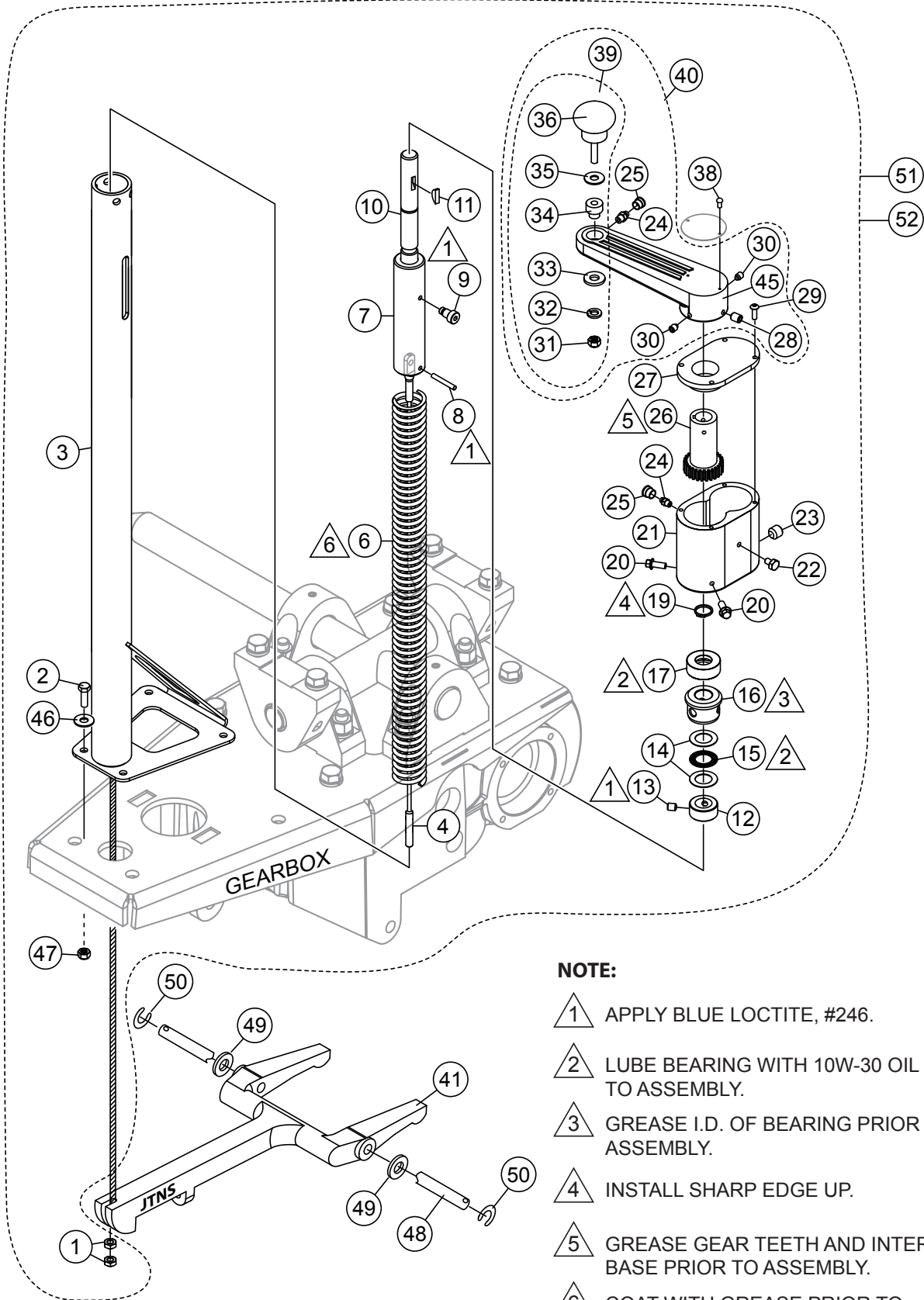


22 OZ. BOTTLE (651 ML)

JTNSW GEARBOX ASSY. (RIGHT-SIDE)

<u>NO.</u>	<u>PART NO.</u>	<u>PART NAME</u>	<u>QTY.</u>	<u>REMARKS</u>
1#	0121 A	PIPE PLUG 3/8"	2	
2#	0181 B	WASHER, LOCK 1/4" MED	8	
3#	1138	SNAP RING, EXTERNAL, 1-1/8" DIA	1	
4#	1146	SCREW, FHSC 5/16-18 X 1", NYLOC	5	
5#	2037	SPACER	1	
6#	2229	KEY, 5/16" X 1-7/16"	1	
7#	2231	SHAFT, OUTPUT	1	
8#	2249	GEAR, WORM, COMPOSITE, RH	1	
9#	2295	SCREW, HHC 1/4-20 X 7/8"	8	
10#	10235	WASHER, LOCK 5/16" EXT.	4	
11#	10909	KEY, 3/16" SQ X 11/16"	1	
12#	24375	COVER, GEAR BOX	1	
13@#	20396	O-RING	1	
15#	21033	SIGHT GLASS	2	
16#	21218	VENT, AIR, GEAR BOX	1	
17#	24121	COUPLER, .75" ID	1	
18#	24141	COVER, GEARBOX	1	
19#	24156	FLANGE, INPUT SHAFT	2	
20#	24157	WORM GEAR, RH	1	
21#	24159	CASE, WORM GEAR, MACHINED	1	
22#	24206	BEARING, CONE & CUP	2	
23@#	24323	SEAL, OIL, DUAL LIP, 3/4" SHAFT	2	
24#	24222	PLUG, 1/8 NPT, HEX SOCKET HEAD	2	
25@#	24254	SEAL, OIL DUAL LIP	1	
26@#	24279	O-RING	2	
27#	24286	CUP BEARING	2	
28#	24287	BEARING, CONE	2	
29	20111	OIL, MOBIL SHC 634/EP 460 22OZ.	2	
30	60096	LOCTITE, #572 WHITE	1	
31	60091	LOCTITE, #242 BLUE	1	
32#	24292	KIT, SHIMS AND SEALS	1	INCLUDES ITEMS W/@
33	24278	GEARBOX ASSY., RS.....	1	INCLUDES ITEMS W/#

PITCH CONTROL TOWER ASSY.



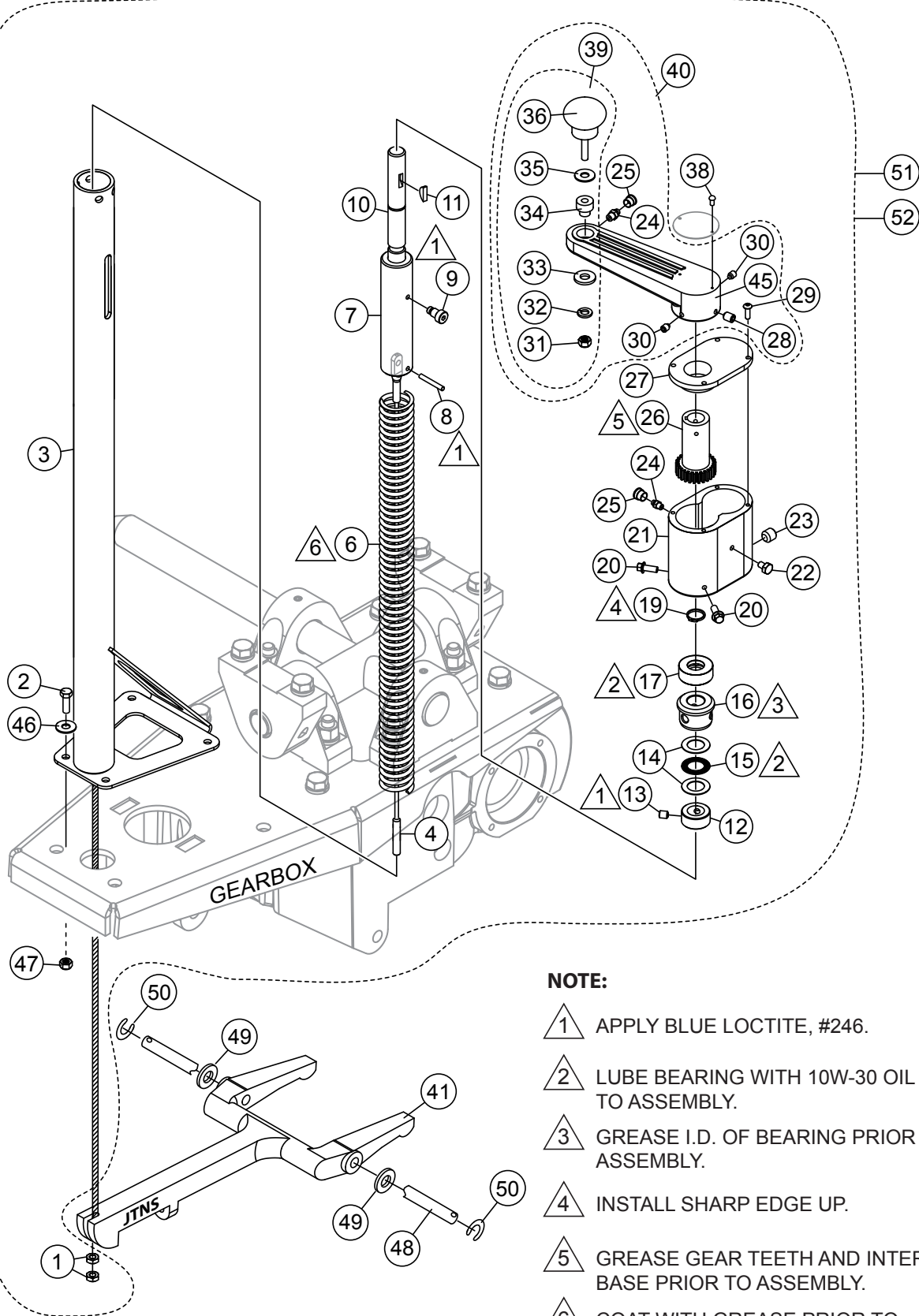
NOTE:

- 1 APPLY BLUE LOCTITE, #246.
- 2 LUBE BEARING WITH 10W-30 OIL PRIOR TO ASSEMBLY.
- 3 GREASE I.D. OF BEARING PRIOR TO ASSEMBLY.
- 4 INSTALL SHARP EDGE UP.
- 5 GREASE GEAR TEETH AND INTERNAL BASE PRIOR TO ASSEMBLY.
- 6 COAT WITH GREASE PRIOR TO ASSEMBLY.

PITCH CONTROL TOWER ASSY.

NO.	PART NO.	PART NAME	QTY.	REMARKS
1\$#	1116	NUT, BRASS JAM 5/16-18	2	
2\$#	36720	SCREW, HHF 5/16-18 X 3/4" GRD5	4	
3\$#	24442	TOWER, PITCH CONTROL	1	RIGHT SIDE
3\$#	24439	TOWER, PITCH CONTROL	1	LEFT SIDE
4\$#	2008	CABLE CABLE PITCH CONTROL	1	
6\$#	2156	SPRING, COMPRESSION, 15/16" OD X 20-5/8" L	1	
7\$#	10721	SLIDE BLOCK, PITCH CONTROL	1	RIGHT SIDE
7\$#	10722	SLIDE BLOCK, PITCH CONTROL	1	LEFT SIDE
8\$#	1729	PIN, ROLL 3/16 X 1-1/4"	1	
9\$#	24112	PIN, ADJUSTMENT	1	
10\$#	24113	SHAFT, PITCH CONTROL	1	RIGHT SIDE
10\$#	24114	SHAFT, PITCH CONTROL	1	LEFT SIDE
11\$#	0627	KEY, 3/16" X 1-1/4"	1	
12\$#	24109	COLLAR, SET	1	
13\$#	24115	SCREW, SET, 5/16-18 X 1/4"	2	
14\$#	2170	BEARING, RACE	2	
15\$#	2169	BEARING, THRUST	1	
16\$#	1612	BEARING, ALUM., PITCH CONTROL	1	
17\$#	0281	BEARING, THRUST	1	
19\$#	10512	RING, SNAP	1	
20\$#	22021	SCREW, HHFS M8-1.25 X 20 MM, GRD10.9	2	RIGHT SIDE
21\$#	24107	HOUSING, PITCH CONTROL	1	
22\$#	22021	SCREW, HHFS M8-1.25 X 20 MM, GRD10.9, PATCH	1	LEFT SIDE
23\$#	17109	SCREW, SHSCU M8-1.25 X 8MM	1	
24%\$#	2621	FITTING, GREASE ZERK STR.	2	
25%\$#	24227	CAP, GREASE ZERK	2	
26\$#	24105	GEAR, DRIVE PITCH CONTROL	1	
27\$#	2649	COVER, PITCH CONTROL HOUSING	1	
28%\$#	0185	SCREW, SHS 3/8-16 X 3/8"	1	
29\$#	9191	SCREW, BHSC M5-0.8 X 16MM	4	

PITCH CONTROL TOWER ASSY.(CONTINUED)



NOTE:

- 1 APPLY BLUE LOCTITE, #246.
- 2 LUBE BEARING WITH 10W-30 OIL PRIOR TO ASSEMBLY.
- 3 GREASE I.D. OF BEARING PRIOR TO ASSEMBLY.
- 4 INSTALL SHARP EDGE UP.
- 5 GREASE GEAR TEETH AND INTERNAL BASE PRIOR TO ASSEMBLY.
- 6 COAT WITH GREASE PRIOR TO ASSEMBLY.

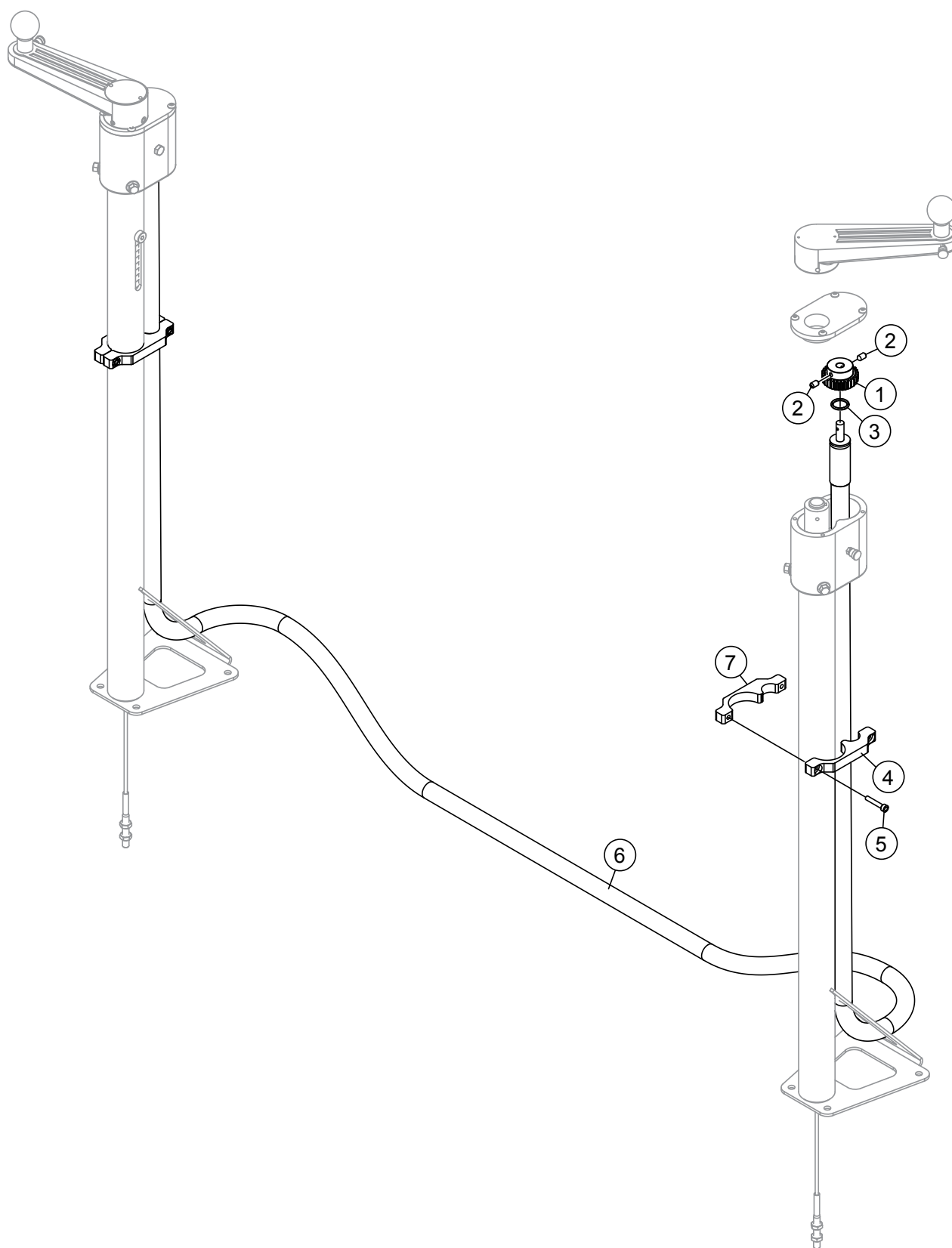
PITCH CONTROL TOWER ASSY.(CONTINUED)

NO.	PART NO.	PART NAME	QTY.	REMARKS
30%\$#	24091	SCREW, SHS 1/4-20 X 5/16"	2	
31 @%\$#	24093	HEX NUT, M8 X 1-1/4" NYLOC	1	
32 @%\$#	24096	WASHER, M8 SPLIT LOCK	1	
33 @%\$#	13351	WASHER, FLAT 3/8 EXT THICK HIGH STRENGTH	1	
34 @%\$#	24094	SPACER	1	
35 @%\$#	10136	WASHER, FLAT SAE 3/8"	1	
36 @%\$#	24095	KNOB W/ BOLT	1	
38\$#	4014	SCREW, #2, 3/16 P-K TYPE U-DRIVE	4	
39%\$#	24092	KNOB, KIT	1	INCLS. ITEMS W/@
40\$#	24090	LEVER ASSY., TROWEL ADJ	1	INCLS. ITEMS W/%
41	1150	YOKE ARM	2	
45%\$#	24406	LEVER, TROWEL ADJ.	1	
46\$#	0300 B	WASHER, FLAT 5/16"	4	
47\$#	5283	NUT, NYLOCK 5/16"	4	
48	20801	PIN, YOKE ARM	1	
49	22292	SPACER	4	
50	20802	RING SNAP	4	
51	24108	TOWER ASSY. PITCH CONTROL, RH	1	INCLS. ITEMS W/\$
52	24098	TOWER ASSY. PITCH CONTROL, LH	1	INCLS. ITEMS W/#

NOTICE

Indicated quantities are for one pitch control drive assembly. If ordering for two pitch control drives, double the quantity.

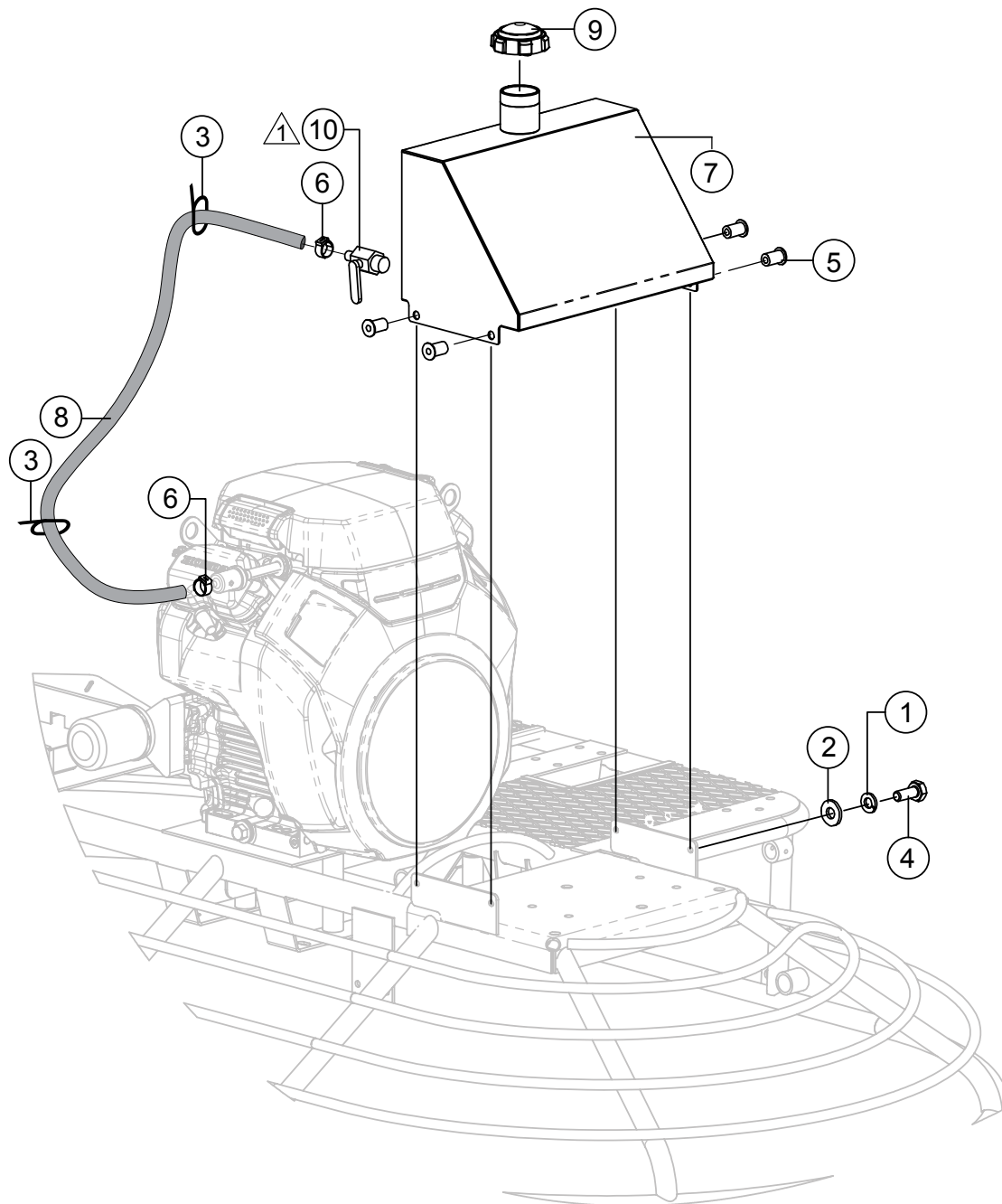
PITCH CONTROL DRIVE CABLE ASSY.



PITCH CONTROL DRIVE CABLE ASSY.

<u>NO.</u>	<u>PART NO.</u>	<u>PART NAME</u>	<u>QTY.</u>	<u>REMARKS</u>
1	23036	GEAR, PITCH CONTROL	2	
2	24180	SCREW, SHS M5-0.8 X 10MM	4	
3	9196	O-RING	2	
4	24129	CLAMP, PITCH CABLE	2	
5	37325	SCREW, SHC M5-0.8 X 30MM	4	
6	24258	DRIVE CABLE, PITCH CONTROL	1	
7	24130	CLAMP, PITCH CABLE, THREADED	2	

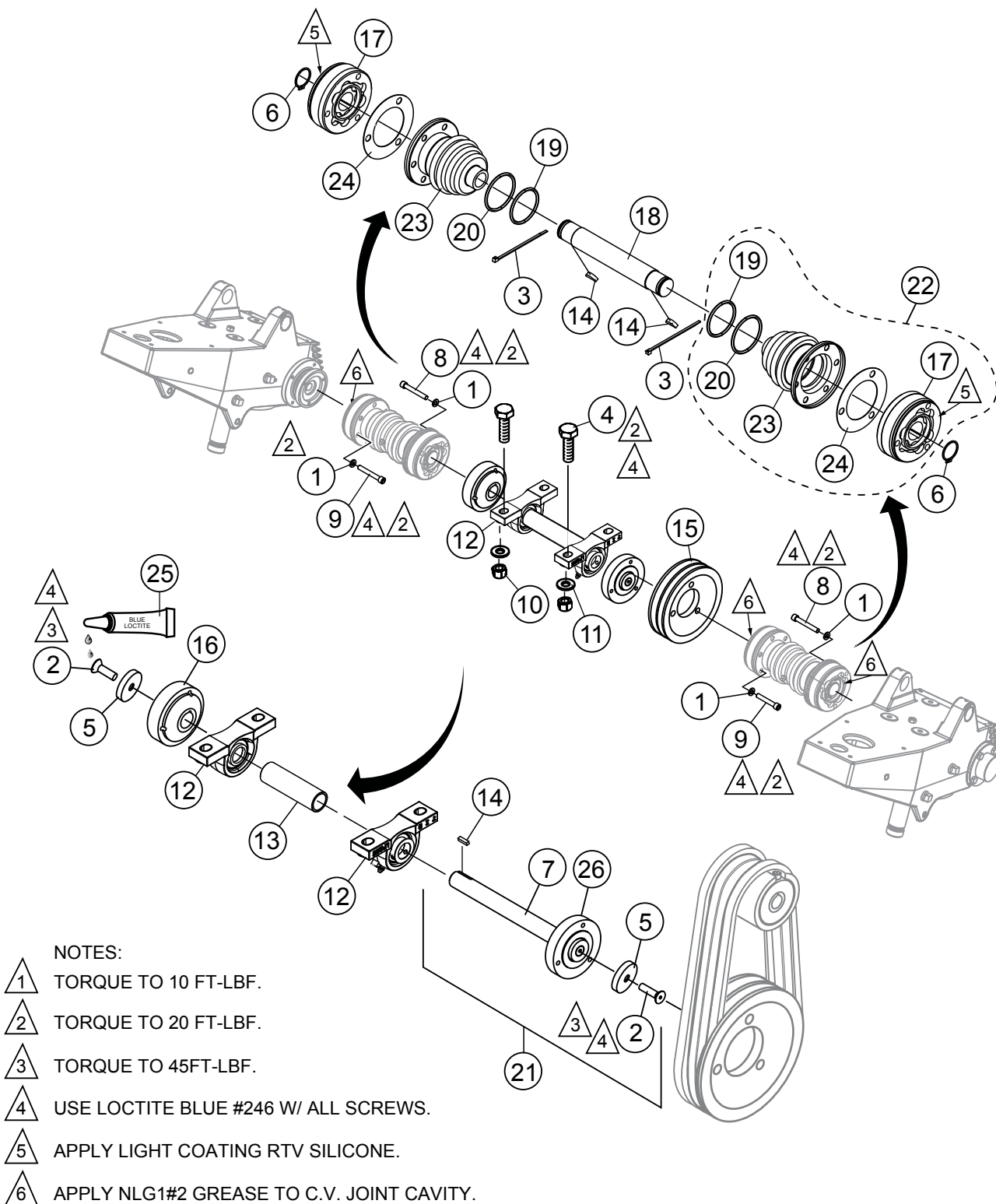
FUEL TANK ASSY.



NOTES:
1 USE FUEL RATED THREAD SEALANT ON
PETCOCK THREADS.

FUEL TANK ASSY.

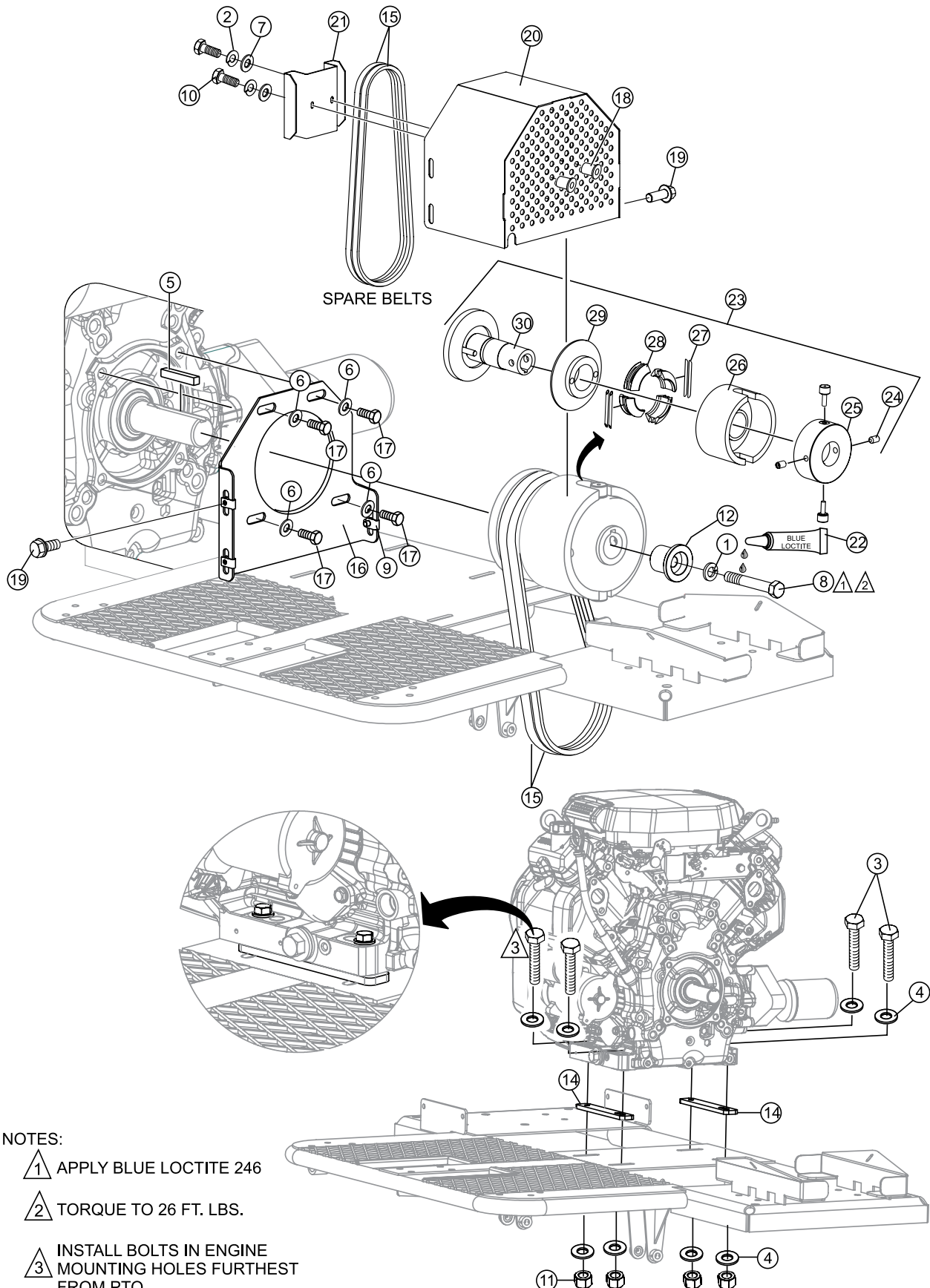
<u>NO.</u>	<u>PART NO.</u>	<u>PART NAME</u>	<u>QTY.</u>	<u>REMARKS</u>
1	0181 B	WASHER, LOCK 1/4" MED	4	
2	0948	WASHER, FLAT SAE 1/4"	4	
3	1662	TIE, CABLE TY-RAP BLACK	2	
4	4514	SCREW, HHC 1/4-20 X 5/8" GRD 5	4	
5	19333	NUT, BLIND 10-32 X .130-.225	4	
6	24221	CLAMP, HOSE WORM, 12MM-15MM	2	
7	24173	FUEL TANK	1	
8	24213	FUEL HOSE, 8MM X 14MM X 450MM	1	
9	24224	CAP, RED	1	
10	24257	VALVE, M14 - 8MM BARB	1	



DRIVE ASSY.

<u>NO.</u>	<u>PART NO.</u>	<u>PART NAME</u>	<u>QTY.</u>	<u>REMARKS</u>
1	0161 C	WASHER, LOCK 5/16" MED	12	
2\$	1146	SCREW, FHSC 5/16-18 X 1", NYLOC	1	
3	1662	TIE, CABLE TY-RAP BLACK	4	
4	9154	SCREW, HHC 3/8-16 X 2"	4	
5\$	2037	SPACER	1	
6	2090	SNAP RING, EXTERNAL, 1-1/16" DIA	4	
7\$	10903	SHAFT DRIVE BEARING	1	
8	2186	SCREW, SHC 5/16-18 X 2-1/4" PLTD	9	
9	2187	SCREW, SHC 5/16-18 X 2-1/2" GRD5 PLTD	3	
10	10133	NUT, NYLOC 3/8-16	4	
11	13351	WASHER, FLAT SAE 3/8", HIGH STRGTH	4	
12	24376	BEARING, P-BLOCK	2	
13	24431	SPACER	1	
14\$	10909	KEY, 3/16" SQ X 11/16"	5	
15	11047	PULLEY, 5-41/64" OD, 138 RPM	1	
16	24124	COUPLER, C.V. SHAFT DRIVE RIDER	1	
17#	24253	JOINT, C.V.	4	
18	24138	SHAFT, C.V. JOINT 8.13L	2	
19#	22220	O-RING	2	
20#	22219	O-RING	2	
21	2129	SHAFT ASSY. PILLOW BLOCK BEARINGS	1	INCLUDES ITEMS W/\$
22%	24127	JOINT, C.V. W/ BOOT AND O-RINGS	1	INCLUDES ITEMS W/#
23#	24255	BOOT ASM., C.V. JOINT	1	
24#	24235	GASKET, C.V. JOINT BOOT	1	
25	60097	LOCTITE, #246 BLUE	1	
26\$	10904	COUPLER, PULLEY DRIVE	1	

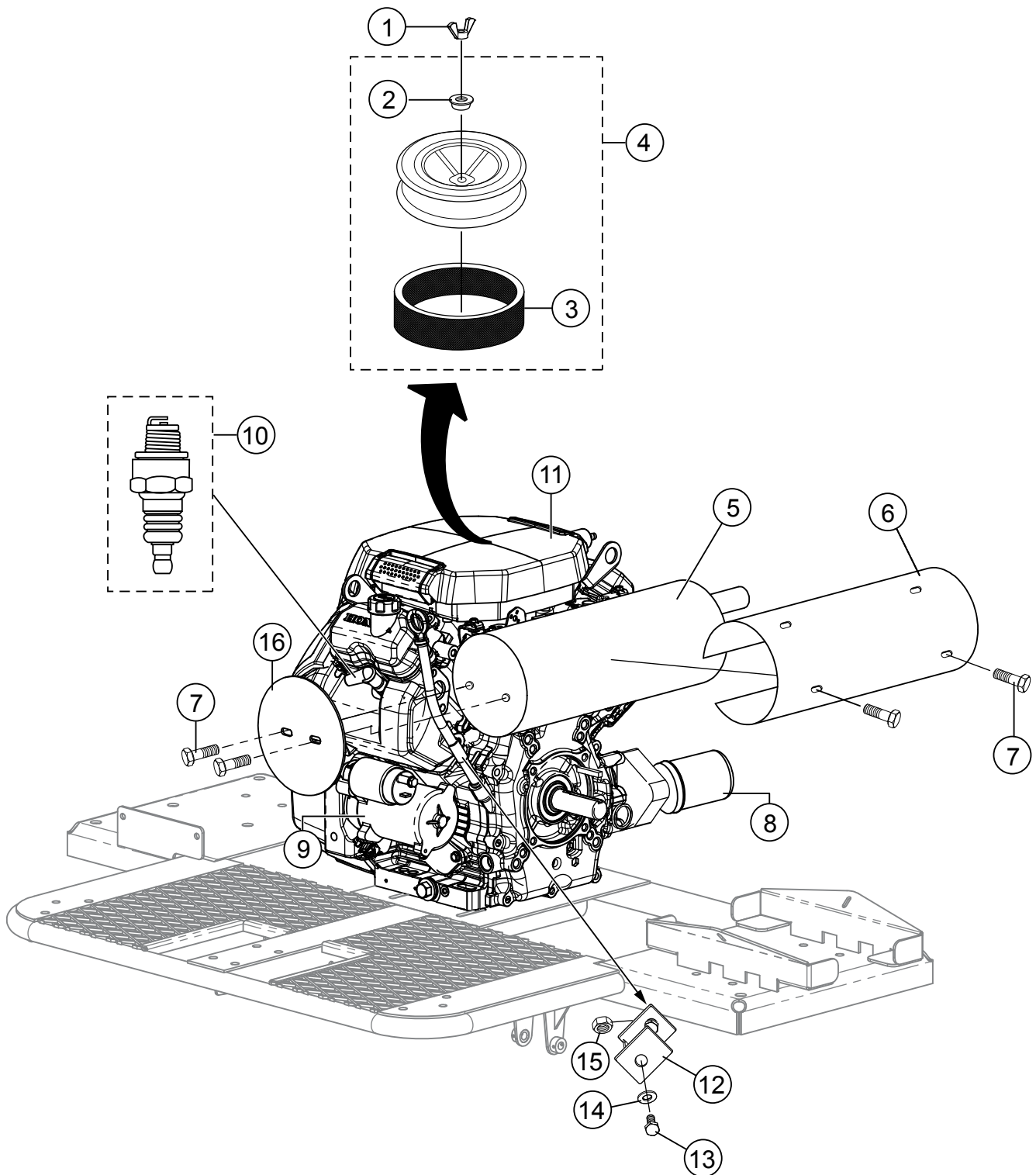
ENGINE MOUNTING AND CLUTCH ASSY.



ENGINE MOUNTING AND CLUTCH ASSY.

<u>NO.</u>	<u>PART NO.</u>	<u>PART NAME</u>	<u>QTY.</u>	<u>REMARKS</u>
1	2955	WASHER, LOCK, 7/16" ZINC	1.....	JTNSW24
1	0166 A	WASHER, LOCK, 3/8" MED	1.....	JTNSW20
2	0181 B	WASHER, LOCK 1/4" MED	2	
3	0300 A	SCREW, HHC 5/16-18" X 2"	4	
4	0300 B	WASHER, FLAT SAE 5/16"	8	
5	0310	KEY, 1/4" SQ X 1-1/2"	1	
6	0448	WASHER, FLAT SAE 7/16"	4	
7	0948	WASHER, FLAT SAE 1/4"	2	
8	26475	SCREW, HHC 7/16-20 X 2"	1.....	JTNSW24
8	2667	SCREW, HHC, 3/8-24 x 2-1/2"	1.....	JTNSW20
9	24174	NUT, "U" TYPE, M8 X 1.25	3	
10	4514	SCREW, HHC 1/4-20 X 5/8" GRD 5	2	
11	5283	NUT, NYLOC 5/16-18"	4	
12	24320	DRIVE PULLEY RETAINER	1.....	JTNSW24
12	9123	DRIVE PULLEY RETAINER	1.....	JTNSW20
14	24434	SPACER, ENGINE MOUNT	2	
15	24417-V37	V-BELT, VULCRO POWER II	1	
16	24172	BACK PANEL, BELT GUARD	1	
17	15563	SCREW, HHC 7/16-14 X 0.75"	4	
18	19266	NUT, BLIND 1/4-20 X .027-.165	2	
19	22021	SCREW, HEX FLANGE M8-1.25 x 20MM	3	
20	24171	BELT GUARD	1	
21	24106	BELT HOLDER, SPARE BELT	1	
22	60097	LOCTITE, #246 BLUE	1	
23	24143	CLUTCH, 35°, 4" POS-GRIP, 1" BORE	1.....	INCLS. ITEMS W/\$ JTNSW20
23	24248	CLUTCH, 35°, 4" POS-GRIP, 1-1/8" BORE	1.....	INCLS. ITEMS W/@ JTNSW24
24\$@	1893	SCREW, SHS 3/8-24 X 5/8", ZINC PLATED	2	
25\$@	24155	CLUTCH PLATE ASSY. 35° W/ BEARINGS	1	
26\$@	2504	BOWL, CLUTCH 35°	1	
27\$@	2450	WEIGHT SPRING, 4" CLUTCH	2	
28\$@	2451	WEIGHT, 4" POSI GRIP CLUTCH	4	
29\$@	1886	PULLEY, CLUTCH CENTER SLIDER, 4"	1	
30\$	1882	STEM CLUTCH ASSEMBLY	1.....	JTNSW20
30@	24322	STEM CLUTCH ASSEMBLY	1.....	JTNSW24

ENGINE COMPONENTS

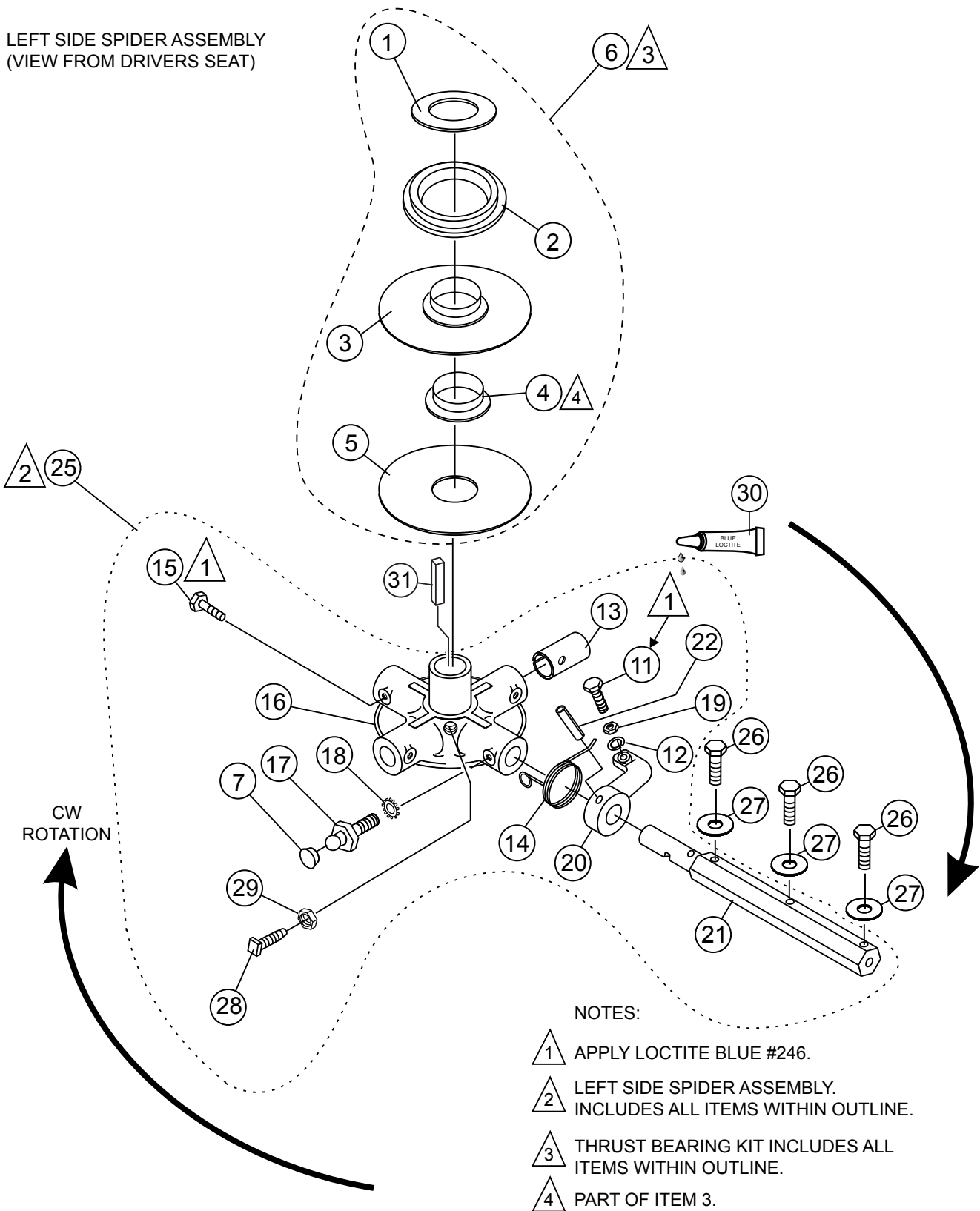


ENGINE COMPONENTS

<u>NO.</u>	<u>PART NO.</u>	<u>PART NAME</u>	<u>QTY.</u>	<u>REMARKS</u>
1	90325044000	NUT, TOOL BOX SETTING	1	
2#	17232Z2E000	GROMMET, AIR CLEANER	1	
3#	17218Z6L000	AIR FILTER, OUTER	1	
4	17210Z6L010	ELEMENT COMP., AIR CLEANER.....	1.....	INCLUDES ITEMS W/#
5	24142	MUFFLER	1	
6	24145	COVER, MUFFLER	1	
7	24147	SCREW, HHFS, M8-1.25 X 12MM	8	
8	15410Z6L800	CARTRIDGE, OIL FILTER	1	
9	31200Z6L003	STARTER, MOTOR ASSY	1	
10	980795587G	SPARK PLUG (ZFR5F)	2	
11	22618	ENGINE, HONDA, GX630RQZB2	1.....	JTNSW20
11	22609	ENGINE, HONDA, GX690RTAF	1.....	JTNSW24
12	23772	BRACKET, DIP STICK MOUNTING	1	
13	2295	SCREW	1	
14	0948	WASHER, FLAT SAE 1/4"	1	
15	10024	NUT, NYLOC 1/4-20	1	
16	24146	COVER, F, MUFFLER	1	

SPIDER ASSY. (LEFT)

LEFT SIDE SPIDER ASSEMBLY
(VIEW FROM DRIVERS SEAT)

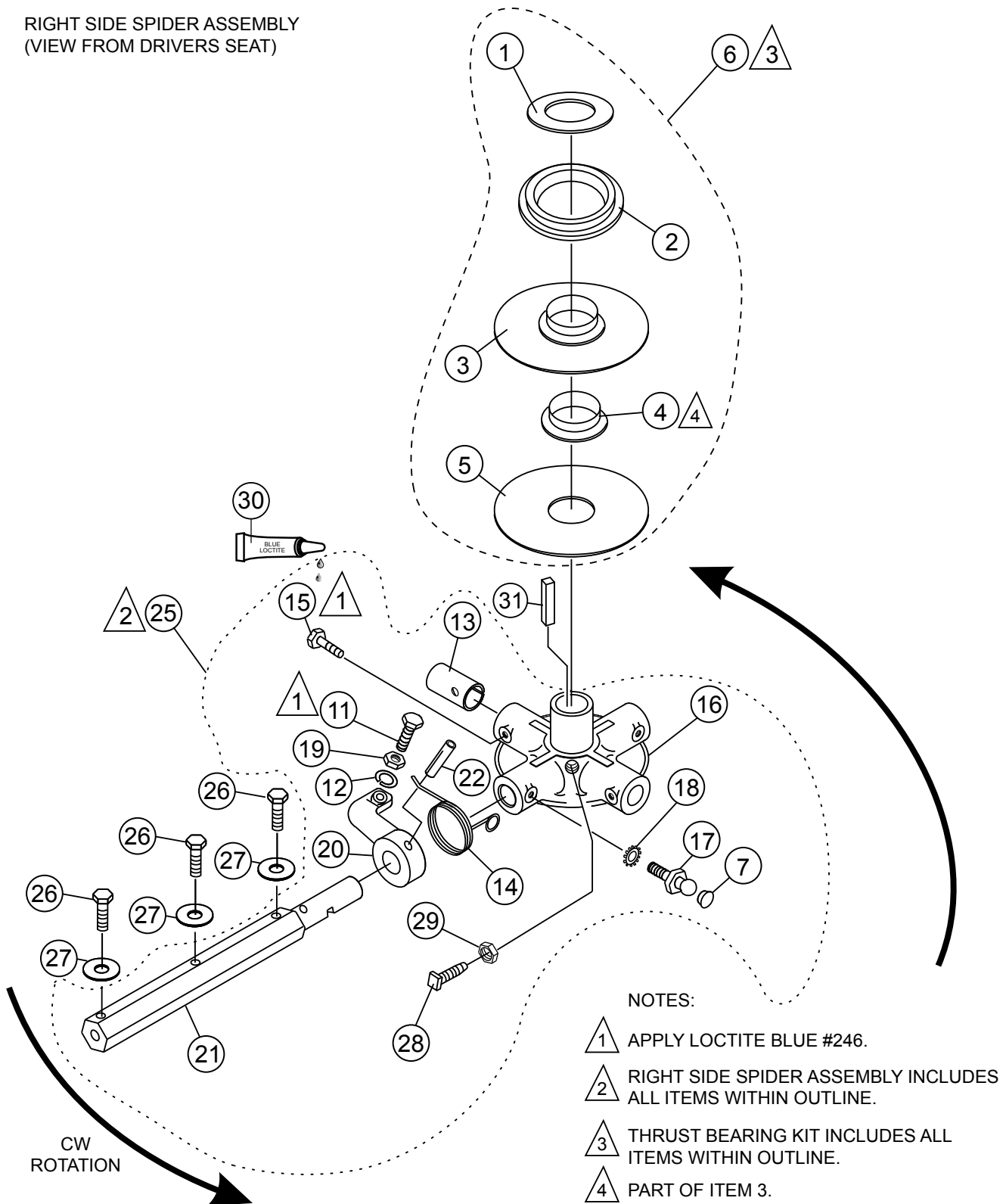


SPIDER ASSY. (LEFT)

NO	PART NO	PART NAME	QTY.	REMARKS
1\$	12208	WEAR RING	1	
2\$	12778	FLANGE BEARING	1	
3\$	10793	THRUST COLLAR W/ BUSHING	1.....	INCLUDES ITEM W/%
4\$%	1471	BUSHING	1	
5\$	1154 A	LOWER WEAR PLATE	1	
6	10968	THRUST BEARING KIT	1.....	INCLUDES ITEMS W/\$
7#	24227	CAP, GREASE ZERK	4	
11#	0164 B	SCREW, HHC 3/8-16 X 1-1/4", ROUNDED	4	
12#	0166 A	WASHER, LOCK, 3/8" MED.	4	
13#	1157 A	BUSHING, TROWEL SMALL ARM	4	
14#	1316	SPRING, LS ARM RETURN	4	
15#	11602	SCREW, HHC 3/8-16 X 3/8"	4	
16#	11876-G	SPIDER PLATE, 1-1/8" SHAFT, 4-BLD, GREEN	1	
17#	1322	SCREW, RETAINING, ZERK	4	
18#	1875	WASHER, INT. SHKP, 3/8"	4	
19#	1876	NUT, HEX JAM 3/8-16	4	
20#	1163-G	LEVER, TROWEL RH, GREEN	4	
21#	2826-G	ARM, TROWEL, 9-3/4", GREEN	4	
22#	4164	PIN, ROLL 5/16" X 2"	4	
25	24268	SPIDER ASSEMBLY, 4BLD, LS.	1.....	INCLUDES ITEMS W/#
26	0105	SCREW, HHC 5/16-18 X 1-1/2"	12	
27	0161 C	LOCK WASHER 5/16"	12	
28#	12097	SCREW, SQHS 3/8-16x1-3/4" GRD 8	1	
29#	1456	NUT, HEX 3/8-16	1	
30	60091	LOCTITE, #242 BLUE	1	
31	1141	KEY, 5/16" SQ X 2-5/8"	1	

SPIDER ASSY. (RIGHT)

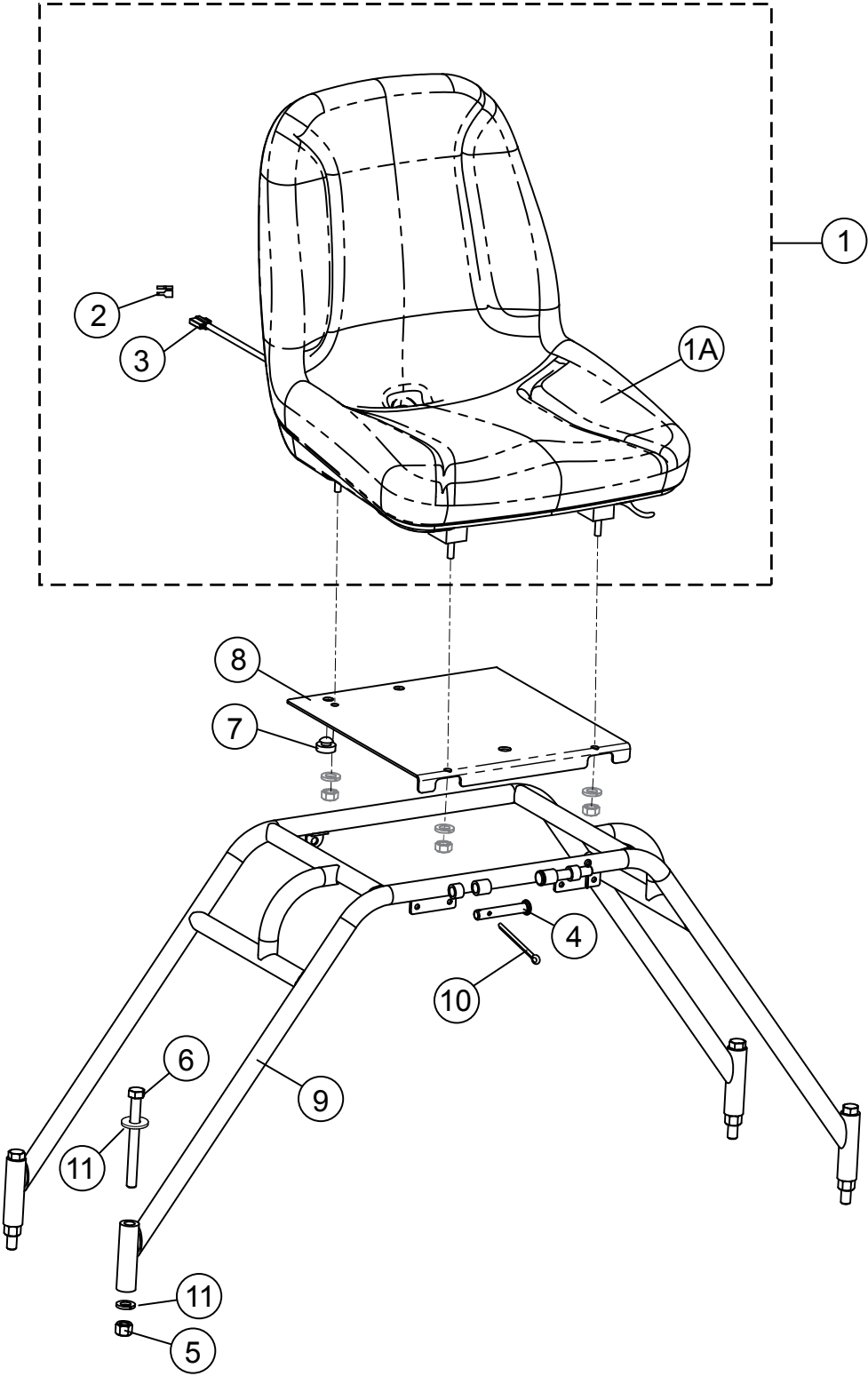
RIGHT SIDE SPIDER ASSEMBLY
(VIEW FROM DRIVERS SEAT)



SPIDER ASSY. (RIGHT)

NO	PART NO	PART NAME	QTY.	REMARKS
1\$	12208	WEAR RING	1	
2\$	12778	FLANGE BEARING	1	
3\$	10793	THRUST COLLAR W/ BUSHING	1.....	INCLUDES ITEM W/%
4\$%	1471	BUSHING	1	
5\$	1154 A	LOWER WEAR PLATE	1	
6	10968	THRUST BEARING KIT	1.....	INCLUDES ITEMS W/\$
7#	24227	CAP, GREASE ZERK	4	
11#	0164 B	SCREW, HHC 3/8-16 X 1-1/4" ROUNDED	4	
12#	0166 A	WASHER, LOCK, 3/8" MED.	4	
13#	1157 A	BUSHING, TROWEL SMALL ARM	4	
14#	1317	SPRING, R.S. ARM RETURN	4	
15#	11602	SCREW, HHC 3/8-16 X 3/8"	4	
16#	11876-G	SPIDER PLATE, 1-1/8" SHAFT, 4-BLD, GREEN	1	
17#	1322	SCREW, RETAINING	4	
18#	1875	WASHER, INT. SHKP, 3/8"	4	
19#	1876	NUT, HEX JAM 3/8-16	4	
20#	1555-G	LEVER, TROWEL, LH, GREEN	4	
21#	2826-G	ARM, TROWEL 9-3/4", GREEN	4	
22#	4164	PIN, ROLL 5/16" X 2"	4	
25	24270	SPIDER ASSY, 4BLD, RS.....	1.....	INCLUDES ITEMS W/#
26	0105	SCREW, HHC 5/16-18 X 1-1/2"	12	
27	0161 C	LOCK WASHER 5/16"	12	
28#	12097	SCREW, SQHS 3/8-16x1-3/4" GRD 8	1	
29#	1456	NUT, HEX 3/8-16	1	
30	60091	LOCTITE, #242 BLUE	1	
31	1141	KEY, 5/16" SQ X 2-5/8"	1	

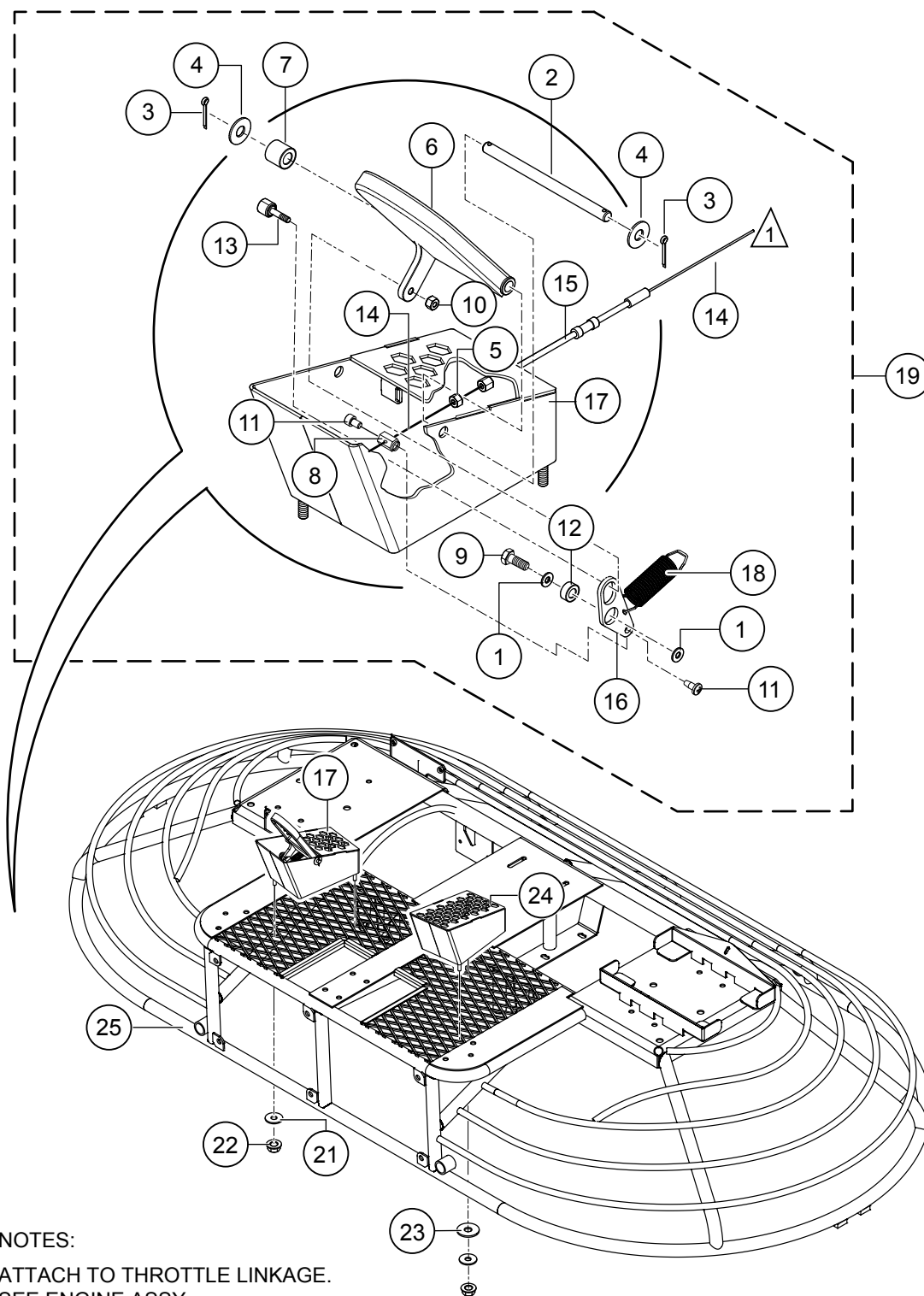
SEAT FRAME ASSY.



SEAT FRAME ASSY.

<u>NO</u>	<u>PART NO</u>	<u>PART NAME</u>	<u>QTY.</u>	<u>REMARKS</u>
1	24120	SEAT ASSEMBLY.....	1.....	INCLUDES ITEMS W/\$
1A\$	24203	SEAT	1	
2\$	24233	TERMINAL, FEMALE	2	
3\$	24234	CONNECTOR BODY, MALE	1	
4	8081	PIN, CLEVIS 1/2" X 2- 3/4"	2	
5	10176	NUT, NYLOC 1/2-13	4	
6	10307	SCREW, HHC 1/2-13 X 5"	4	
7	21597	BUMPER, STEM	3	
8	24118	SEAT PLATE	1	
9	24119	FRAME, SEAT	1	
10	24193	PIN, COTTER, 2.5 X 30MM	2	
11	16630	WASHER, FLAT SAE 1/2-13 X 5	4	

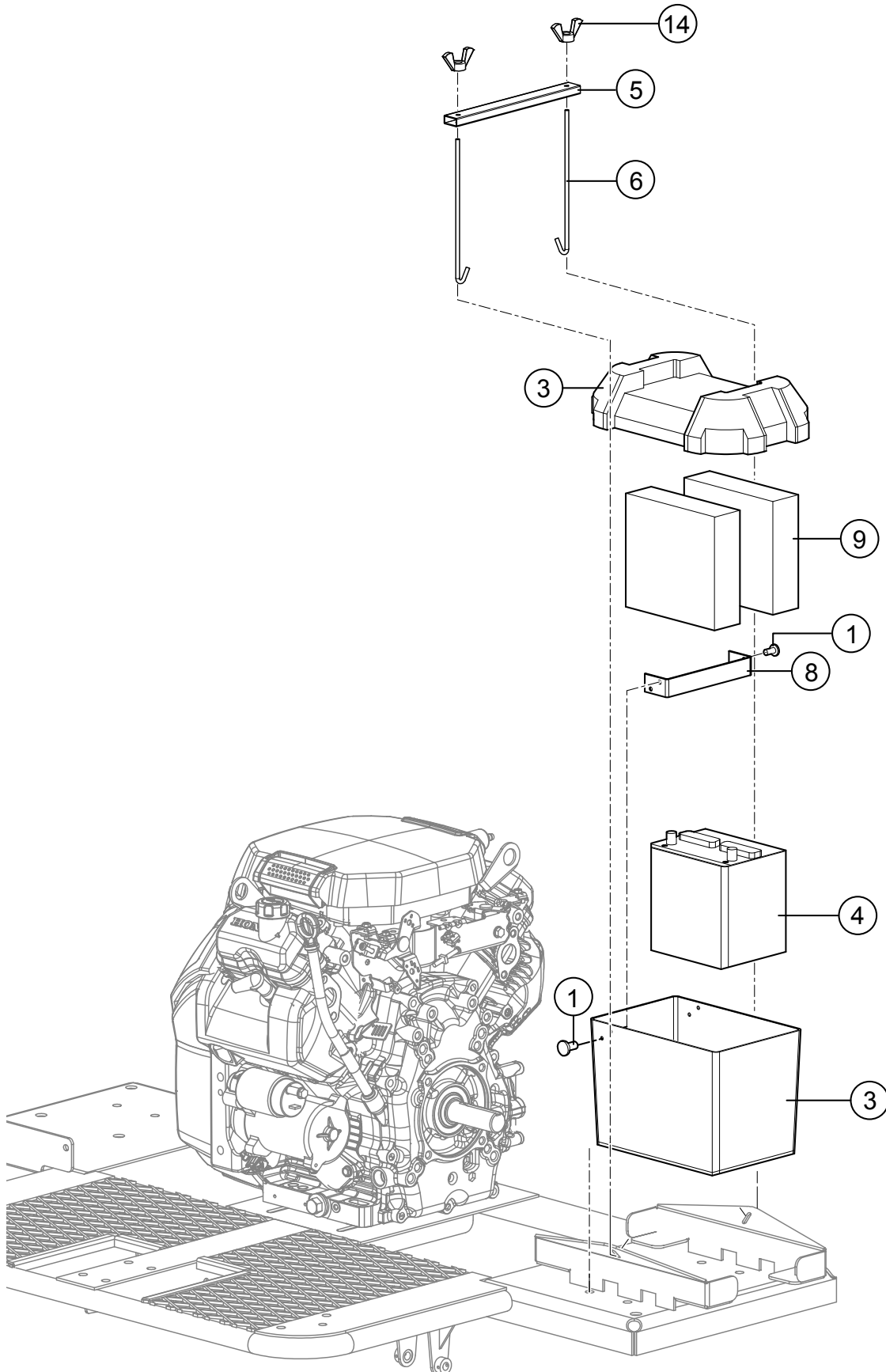
FOOT PEDAL ASSY.



FOOT PEDAL ASSY.

NO	PART NO	PART NAME	QTY.	REMARKS
1@	0300 B	WASHER, FLAT SAE 5/16"	2	
2@	2772	PIN, ACCELERATOR PEDAL	1	
3@	24193	PIN, COTTER, 2.5 X 30MM	2	
4@	10136	WASHER, FLAT SAE 3/8"	2	
6@	23591	PEDAL, ACCELERATOR	1	
7@	23596	SPACER, PEDAL	1	
8@	24170	STOPPER, WIRE	1	
9@	24179	SCREW, HHC M6-1.0 X 20MM	1	
10@	24186	NUT, NYLOC, M4 X 0.7	1	
11@	24187	SCREW, TRUSS HEAD, M5 X 0.8 X 8MM	2	
12@	24192	BALL BEARING	1	
13@	24211	BEARING, CAM FOLLOWER	1	
14@	24214	CABLE, THROTTLE, INNER	1	
15@	24215	CASING, THROTTLE WIRE	1	
16@	24225	LINKAGE, ACCELERATOR PEDAL	1	
17@	24239	FOOT RISER, ACCELERATOR SIDE	1	
18@	37527	SPRING	1	
19	24275	ACCELERATOR PEDAL, ASSEMBLY.....	1.....	INCLUDES ITEMS W/@
21	24096	WASHER, M8 SPLIT LOCK	4	
22	24093	HEX NUT, M8 X 1-1/4" NYLOC	5	
23	3233	WASHER, FENDER, 1-1/2" OD X 3/8" ID	2	
24	24245	FOOT RISER	1	
25	24163	FRAME	1	

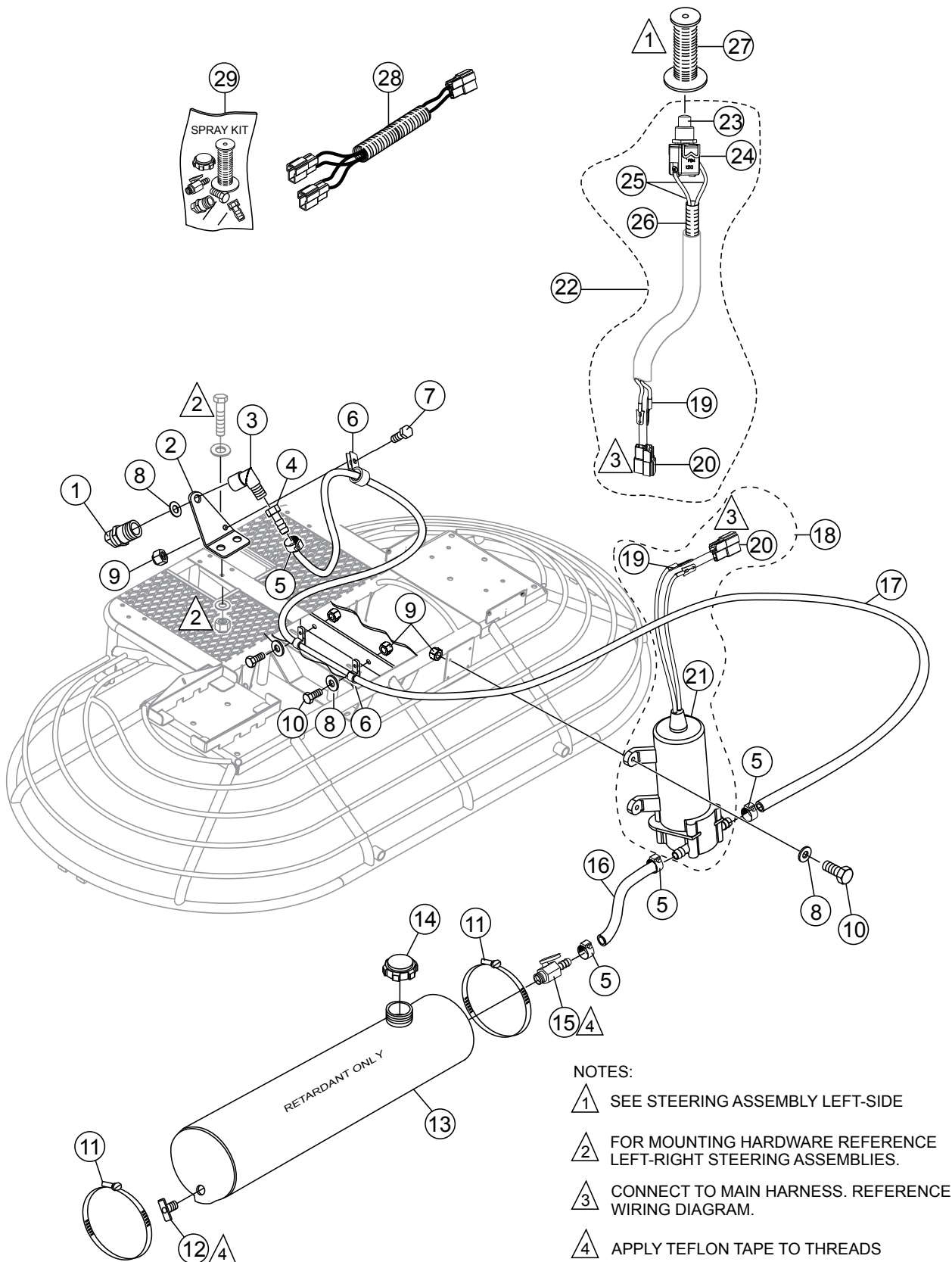
BATTERY ASSY.



BATTERY ASSY.

<u>NO.</u>	<u>PART NO.</u>	<u>PART NAME</u>	<u>QTY.</u>	<u>REMARKS</u>
1	19847	POP RIVET	4	
3	24150	BATTERY BOX	1	
4	24151	BATTERY,WET, 36B20	1	
5	24152	BRACKET, BATTERY HOLD DOWN	1	
6	24153	BOLT, BATTERY BOX	2	
8	24161	BRACKET, BATTERY	1	
9	24162	SPONGE	2	
14	24300	NUT, WING, 1/4"-20 PLTD	2	

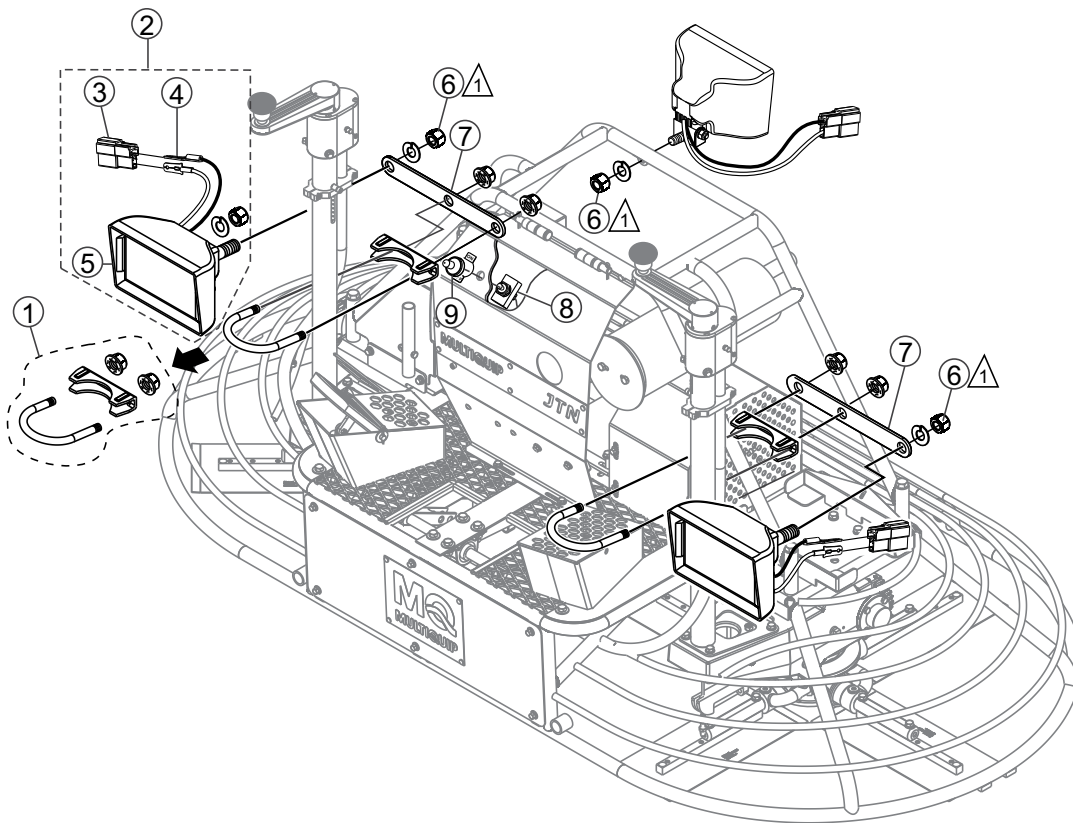
SPRAY TANK ASSY.



SPRAY TANK ASSY.

NO.	PART NO.	PART NAME	QTY.	REMARKS
1#	24219	NOZZLE, SPRAY, 1/4-19 PT MALE	1	
2#	24433	MOUNTING BRACKET, SPRAY NOZZLE	1	
3#	24216	FITTING, BRASS 90° 1/4 MALE X 1/4 FEMALE	1	
4#	24220	FITTING, PF 1/4"- 10MM DIA	1	
5#	24221	CLAMP, HOSE WORM, 12-15 MM	4	
6#	24290	CLAMP, HOSE SUPPORT, 7-16 MM DIA	3	
7#	4514	SCREW, HHC 1/4-20 X 5/8" GRD5	1	
8#	0948	WASHER, FLAT SAE 1/4"	7	
9#	10024	NUT, NYLOC 1/4-20	7	
10#	0131 A	SCREW, HHC 1/4-20 X 3/4"	6	
11#	2398	CLAMP, HOSE WORM	2	
12#	2478	FITTING, PETCOCK RAD DRAIN 1/4 MP	1	
13#	24178	RETARDANT TANK	1	
14#	24212	CAP, BLUE	1	
15#	24257	VALVE, M14 - 8MM BARB	1	
16#	24217	HOSE, 8 MM ID X 12MM OD X 415MM LG	1	
17#	24218	HOSE, 8 MM ID X 12MM OD X 900MM LG	1	
18#	24204	PUMP, SPRAY KIT	1	INCLUDES ITEMS W/%
19%\$	24201	TERMINAL, MALE 16-14 GA	2	
20%\$	24202	CONNECTOR, 2 WIRE MALE TERMINIAL	1	
21%	24205	PUMP, SPRAY, 12VDC	1	
22#	24276	SWITCH ASSY.	1	INCLUDES ITEMS W/\$
23\$	24199	SWITCH, PUSH BUTTON, 4A, 12 VDC	1	
24\$	24169	HOLDER, SPRAY SWITCH	1	
25\$	24276	WIRE, 1.25 SQCM, BLACK, 79" LG	2	
26\$	60221	LOOM, .375 SPLIT, 6.4 FT	2	1PC=1FT
27#	23666	GRIP, HANDLE W/ .63 HOLE	1	
28#	24232	HARNESS, SPRAY KIT	1	
29	24101	KIT, SPRAY	1	INCLUDES ITEMS W/#

LIGHTS ASSY.



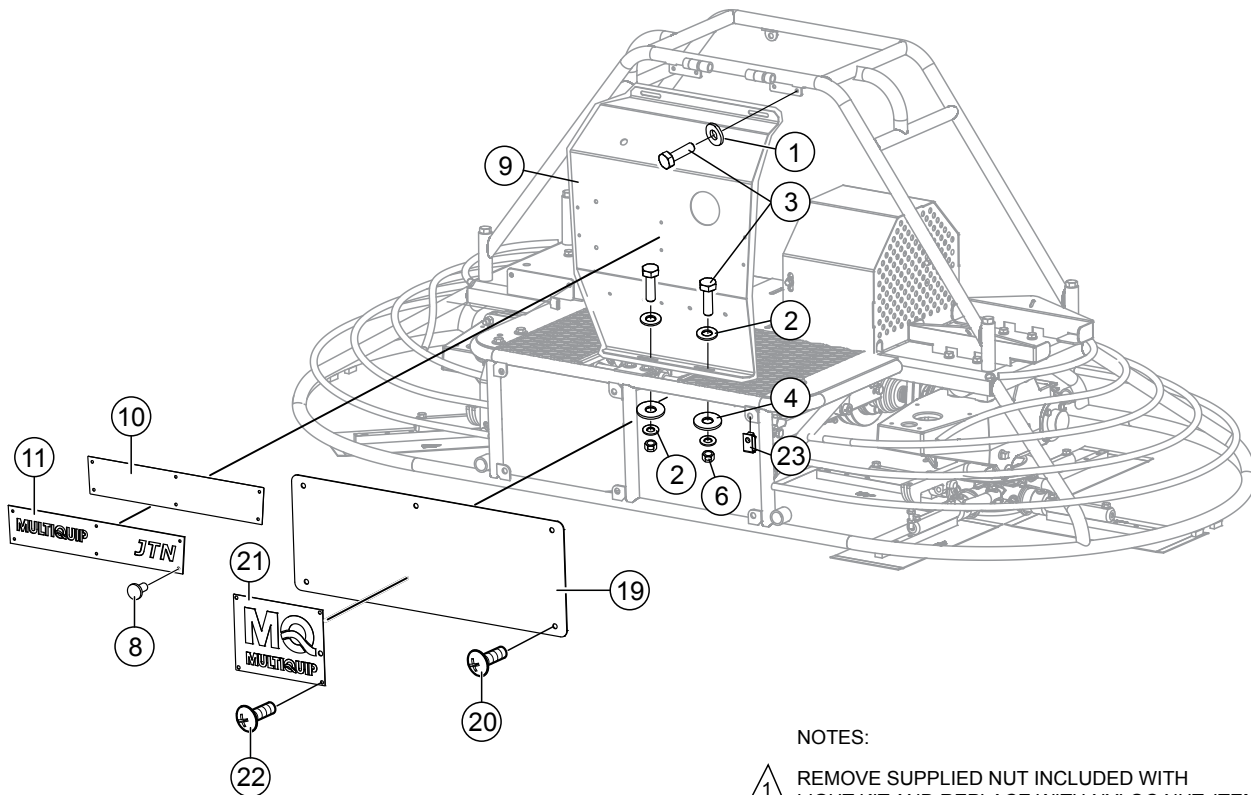
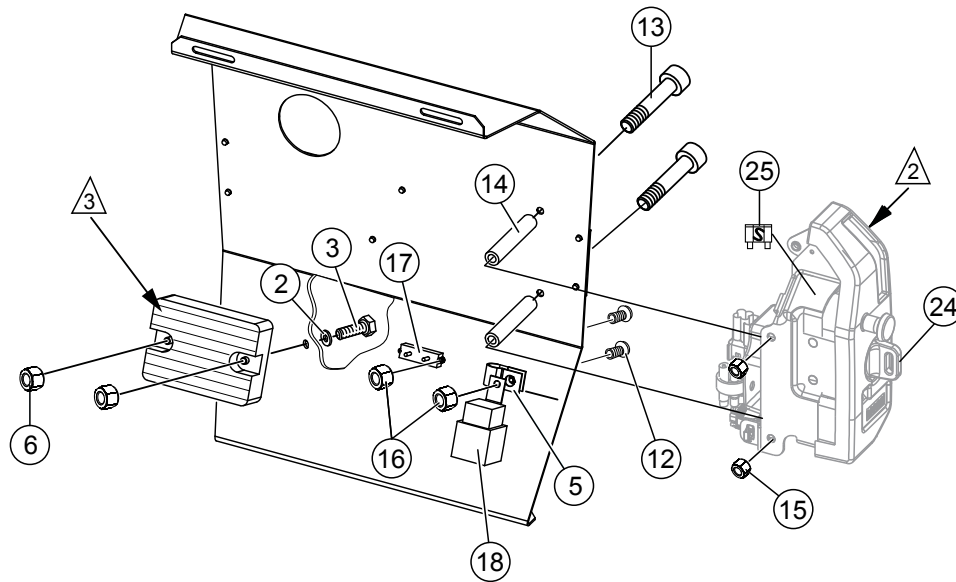
NOTES:

- △ 1 REMOVE SUPPLIED NUT INCLUDED WITH LIGHT KIT AND REPLACE WITH NYLOC NUT, P/N 24093.

LIGHTS ASSY.

<u>NO.</u>	<u>PART NO.</u>	<u>PART NAME</u>	<u>QTY.</u>	<u>REMARKS</u>
1	24160	CLAMP, 1-3/4" MUFFLER	2	
2	24208	LIGHT ASSY., RECTANGULAR, W/ CON.	3.....	ITEMS INCLUDED W/\$
3\$	24202	CONNECTOR BODY, 2-WIRE MALE TERM.	3	
4\$	24201	TERMINAL, MALE 16-14 GA	6	
5\$	23665	LIGHT, RECTANGULAR	3	
6	24093	HEX NUT, M8 x 1-1/4" NYLOC	7	
7	24441	BRACKET, LIGHT	2	
8	24196	SWITCH, TOGGLE, SPST 20A 125VAC	1	
9	24197	BOOT, TOGGLE SWITCH	1	

FRONT PANEL ASSY.



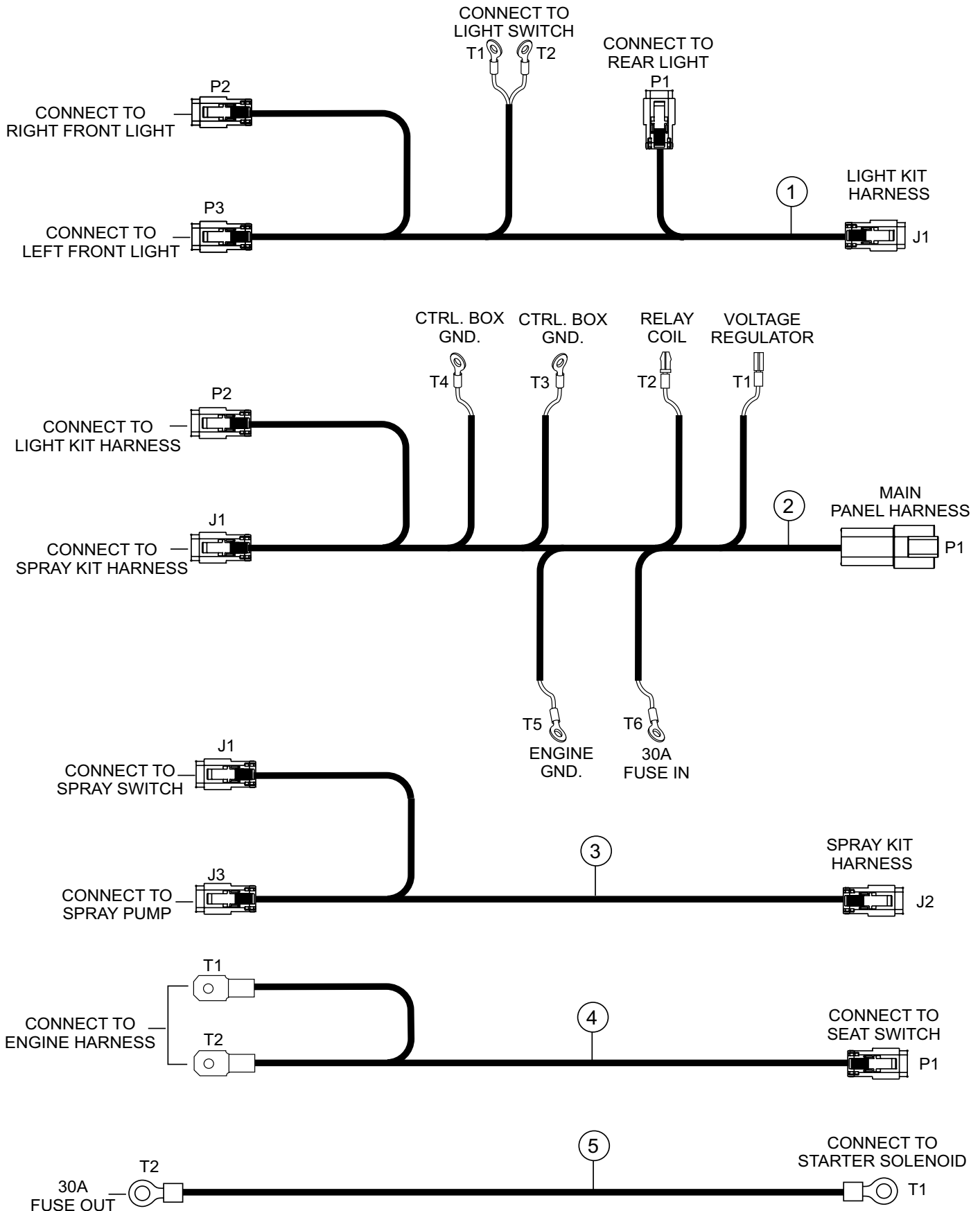
NOTES:

- △ 1 REMOVE SUPPLIED NUT INCLUDED WITH LIGHT KIT AND REPLACE WITH NYLOC NUT, ITEM 7.
- △ 2 CONTROL BOX INCLUDED WITH ENGINE.
- △ 3 REGULATOR INCLUDED WITH ENGINE.

FRONT PANEL ASSY.

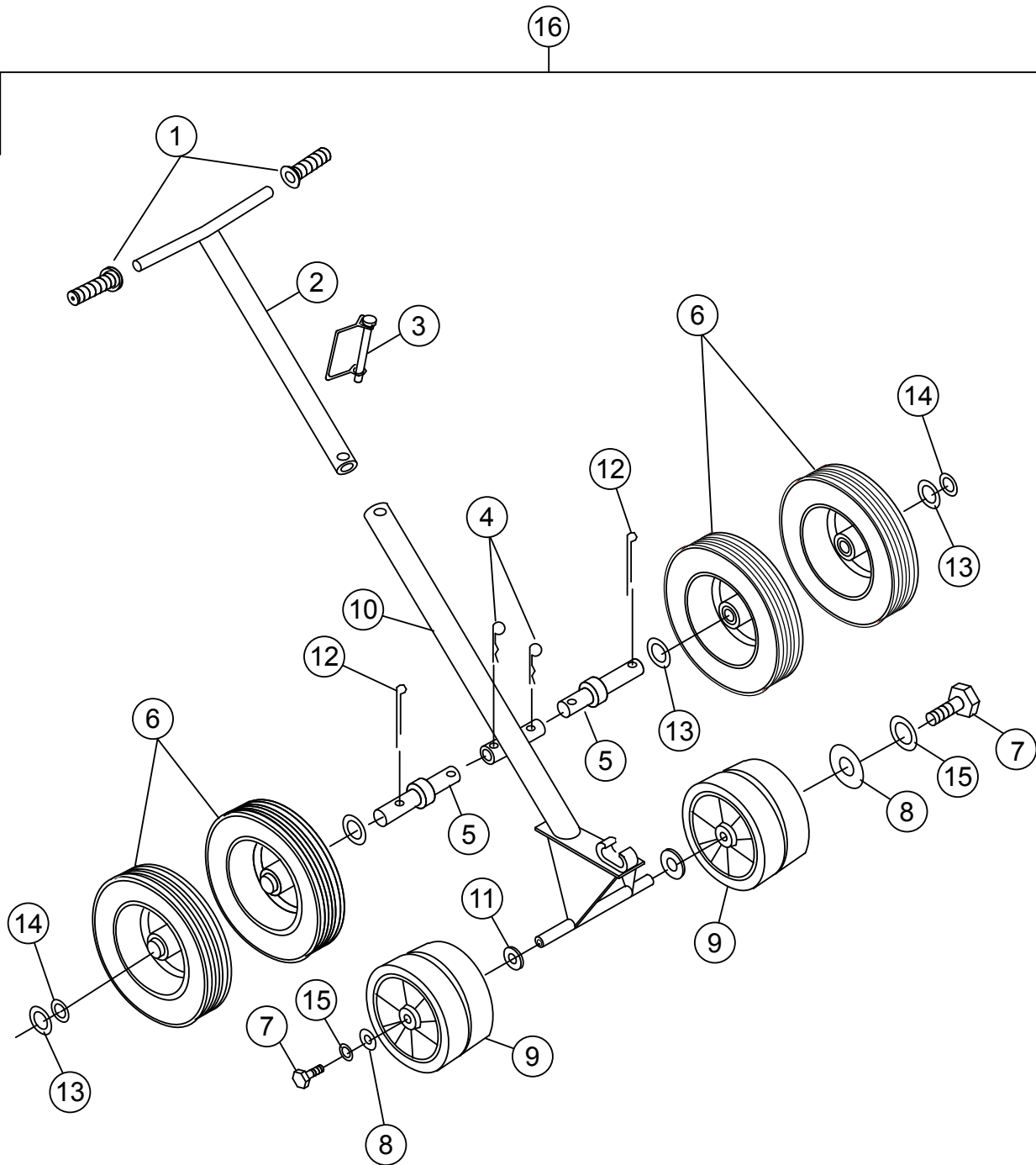
NO	PART NO	PART NAME	QTY.	REMARKS
1	0181 B	WASHER, LOCK 1/4" MED	2	
2	0948	WASHER, FLAT SAE 1/4"	8	
3	2295	SCREW, HHC 1/4-20 X 7/8"	6	
4	3233	WASHER, FENDER, 1.5OD X 3/8 ID	2	
5	8125	CLAMP, HOSE LOOP, 5/8" DIA X .406 HOLE	1	
6	10024	NUT, NYLOC 1/4-20	6	
8	19847	RIVET, POP, ALUM, 3/16 X 1/8-1/4 GRIP	6	
9	23679	CONTROL PANEL	1	
10	24148	SHEET, TRIM BACKING	1	
11	24149	PANEL, "MULTIQUIP"	1	
12	24404	SCREW, TRUSS HD, M5 X 15MM, LG, SUS	3	
13	24188	SCREW, SHCS, M6 X 1.0 X 80MM	2	
14	24189	BOSS, CONTROL BOX	2	
15	24190	NUT, NYLOC, M6 X 1.0	2	
16	24191	NUT, NYLOC, M5 X 0.8	3	
17	24209	CIRCUIT BREAKER, 30A, 12V	1	
18	24210	RELAY, KILL	1	
19	24116	PANEL, FRONT	1	
20	22021	SCREW, HEX FLANGE M8-1.25 X 20MM	6	
21	24128	LOGO PLATE, MULTIQUIP	1	
22	19847	POP RIVET	4	
23	24174	NUT, "U" TYPE 1/4-20	6	
24	35110ZV5V50	KEY, IGNITION	1	
25	9820044300	FUSE 30 AMP	1	

HARNESS ASSY.



HARNESS ASSY.

<u>NO.</u>	<u>PART NO.</u>	<u>PART NAME</u>	<u>QTY.</u>	<u>REMARKS</u>
1	24231	LIGHT KIT HARNESS	1	
2	23661	MAIN PANEL HARNESS	1	
3	24232	SPRAY KIT HARNESS	1	
4	24230	SEAT SWITCH HARNESS	1	
5	23723	POWER PANEL HARNESS	1	



E-Z MOVER AND LIFT HANDLE ASSY.

<u>NO.</u>	<u>PART NO.</u>	<u>PART NAME</u>	<u>QTY.</u>	<u>REMARKS</u>
1#	0189	HAND GRIP	2	
2#	2336	UPPER HANDLE	1	
3#	1869	SNAP PIN	1	
4#	7170	CLIP	2	
5#	11684	DOLLY AXLE	2	
6#	10440	WHEEL AND TIRE	2	
7#	0655	SCREW, HHC 5/16-18 x 3/4"	2	
8#	0300 B	FLAT WASHER 5/16"	2	
9#	2364	WHEEL	2	
10#	10445	FRAME	1	
11#	4684	FLAT WASHER 5/8"	2	
12#	0183	COTTER PIN	4	
13#	10446	FLAT WASHER 3/4"	8	
14#	8151	FLAT WASHER 3/4" SAE	8	
15#	0161 C	LOCK WASHER 5/16"	2	
16	EMR2	EZ-MOVER ASSEMBLY	1.....	INCLUDES ITEMS W/#

TERMS AND CONDITIONS OF SALE — PARTS

PAYMENT TERMS

Terms of payment for parts are net 30 days.

FREIGHT POLICY

All parts orders will be shipped collect or prepaid with the charges added to the invoice. All shipments are F.O.B. point of origin. Multiquip's responsibility ceases when a signed manifest has been obtained from the carrier, and any claim for shortage or damage must be settled between the consignee and the carrier.

MINIMUM ORDER

The minimum charge for orders from Multiquip is \$15.00 net. Customers will be asked for instructions regarding handling of orders not meeting this requirement.

RETURNED GOODS POLICY

Return shipments will be accepted and credit will be allowed, subject to the following provisions:

1. A Returned Material Authorization must be approved by Multiquip prior to shipment.
2. To obtain a Return Material Authorization, a list must be provided to Multiquip Parts Sales that defines item numbers, quantities, and descriptions of the items to be returned.
 - a. The parts numbers and descriptions must match the current parts price list.
 - b. The list must be typed or computer generated.
 - c. The list must state the reason(s) for the return.
 - d. The list must reference the sales order(s) or invoice(s) under which the items were originally purchased.
 - e. The list must include the name and phone number of the person requesting the RMA.
3. A copy of the Return Material Authorization must accompany the return shipment.
4. Freight is at the sender's expense. All parts must be returned freight prepaid to Multiquip's designated receiving point.

5. Parts must be in new and resalable condition, in the original Multiquip package (if any), and with Multiquip part numbers clearly marked.
6. The following items are not returnable:
 - a. Obsolete parts. (If an item is in the price book and shows as being replaced by another item, it is obsolete.)
 - b. Any parts with a limited shelf life (such as gaskets, seals, "O" rings, and other rubber parts) that were purchased more than six months prior to the return date.
 - c. Any line item with an extended dealer net price of less than \$5.00.
 - d. Special order items.
 - e. Electrical components.
 - f. Paint, chemicals, and lubricants.
 - g. Decals and paper products.
 - h. Items purchased in kits.
7. The sender will be notified of any material received that is not acceptable.
8. Such material will be held for five working days from notification, pending instructions. If a reply is not received within five days, the material will be returned to the sender at his expense.
9. Credit on returned parts will be issued at dealer net price at time of the original purchase, less a 15% restocking charge.
10. In cases where an item is accepted, for which the original purchase document can not be determined, the price will be based on the list price that was effective twelve months prior to the RMA date.
11. Credit issued will be applied to future purchases only.

PRICING AND REBATES

Prices are subject to change without prior notice. Price changes are effective on a specific date and all orders received on or after that date will be billed at the revised price. Rebates for price declines and added charges for price increases will not be made for stock on hand at the time of any price change.

Multiquip reserves the right to quote and sell direct to Government agencies, and to Original Equipment Manufacturer accounts who use our products as integral parts of their own products.

SPECIAL EXPEDITING SERVICE

A \$35.00 surcharge will be added to the invoice for special handling including bus shipments, insured parcel post or in cases where Multiquip must personally deliver the parts to the carrier.

LIMITATIONS OF SELLER'S LIABILITY

Multiquip shall not be liable hereunder for damages in excess of the purchase price of the item with respect to which damages are claimed, and in no event shall Multiquip be liable for loss of profit or good will or for any other special, consequential or incidental damages.

LIMITATION OF WARRANTIES

No warranties, express or implied, are made in connection with the sale of parts or trade accessories nor as to any engine not manufactured by Multiquip. Such warranties made in connection with the sale of new, complete units are made exclusively by a statement of warranty packaged with such units, and Multiquip neither assumes nor authorizes any person to assume for it any other obligation or liability whatever in connection with the sale of its products. Apart from such written statement of warranty, there are no warranties, express, implied or statutory, which extend beyond the description of the products on the face hereof.

Effective: February 22, 2006

[illegible]

PARTS MANUAL

HERE'S HOW TO GET HELP

PLEASE HAVE THE MODEL AND SERIAL
NUMBER ON-HAND WHEN CALLING

CHINA

MQ Shanghai, China

No. 1355 Heng Cang Road
Ma Lu Town Jia Ding District
Shanghai, China 201818

Tel. 011 86 21 59512076
Fax 011 86 21 59512336

Contact: Xiwen Shi
xshi@multiquip.com

© COPYRIGHT 2016, MULTIQUIP INC.

Multiquip Inc and the MQ logo are registered trademarks of Multiquip Inc. and may not be used, reproduced, or altered without written permission. All other trademarks are the property of their respective owners and used with permission.

The information and specifications included in this publication were in effect at the time of approval for printing. Illustrations, descriptions, references and technical data contained in this document are for guidance only and may not be considered as binding. Multiquip Inc. reserves the right to discontinue or change specifications, design or the information published in this publication at any time without notice and without incurring any obligations.

Your Local Dealer is:



P/N: 24408