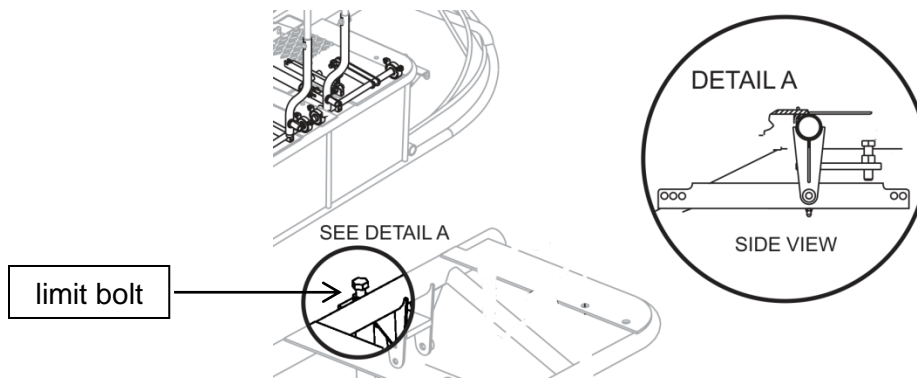




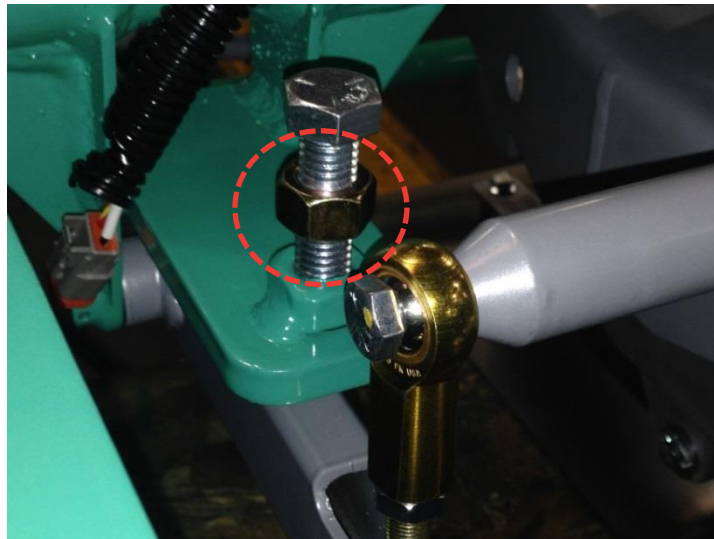
## RESETTING STEERING LIMIT BOLTS

This document is intended to provide information to operators and service personnel on the proper setting of the steering limit bolts. Regular adjustment is not necessary but a periodical inspection should be done to ensure the limit bolts have not moved from factory setting.

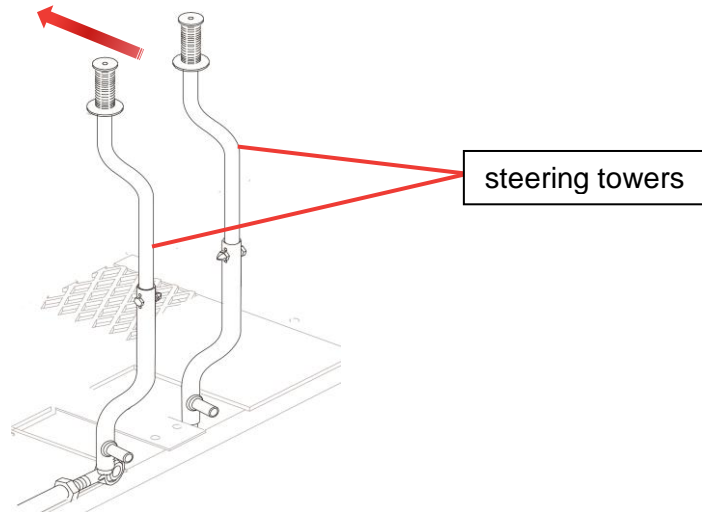
The purpose of the steering limit bolts is to limit the movement of the left and right drive axles to prevent them from bottoming out against the coupler inside the CV joint.



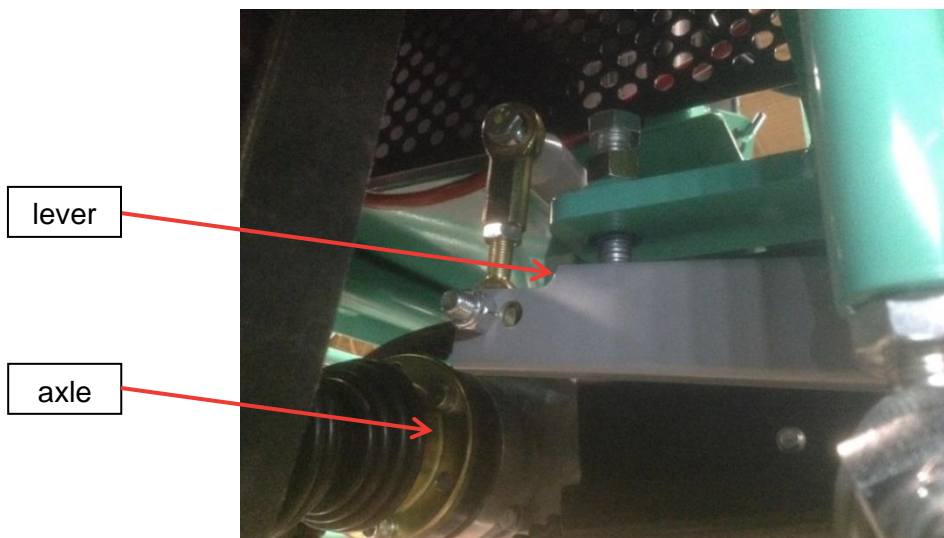
1. Disable the engine from accidental start by removing the negative lead from the battery.
2. Loosen the jam nut and unscrew the limit bolt as shown in the picture below.
3. Clean the bolts and nuts as Loctite will be applied in later steps.



4. With the limit bolt backed out, pull both of the steering towers backwards towards the operator's seat.



5. While reaching the maximum movement of the steering tower feel for any contact of the drive axles. This contact signifies its maximum movement. It's this contact that needs to be eliminated.
6. While both steering towers are held in the full back position, adjust the limiting bolts down to contact the lever.



7. Release the steering towers to normal position.
8. Final setting of the limiting bolts can now be made. Turn the bolts another full turn inward and clean the bolts and jam nut for any grease or dirt. Apply Loctite to the bolt threads and lock in the jam nut.
9. This will set the clearance needed in the drive axle.
10. Reconnect the negative lead to the battery.