

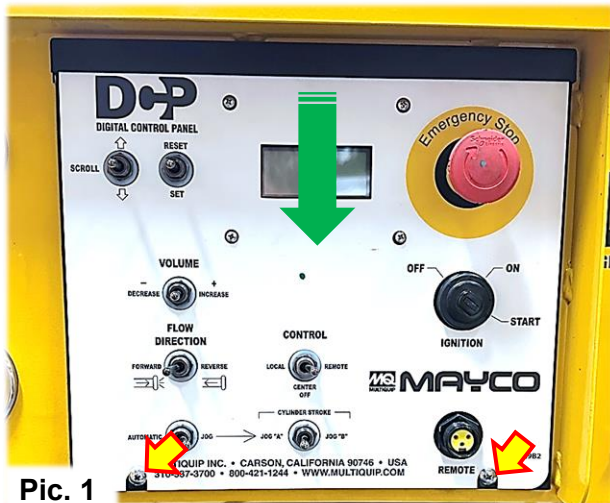
WIRELESS KIT #EM98268DP INSTALLATION INSTRUCTIONS

Wireless Kit Contents

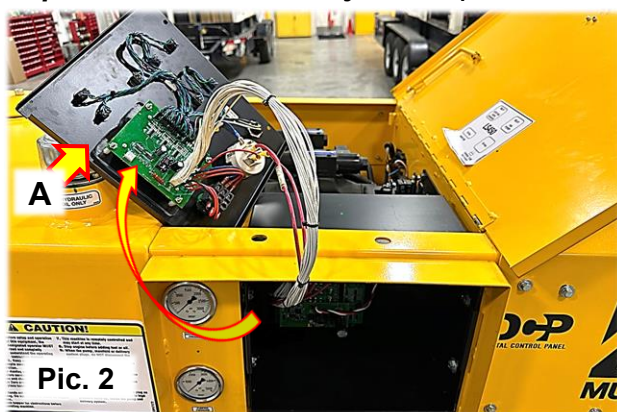
Qty. 1 each... Antenna, Receiver, Transmitter (battery included) & Case

Receiver Installation:

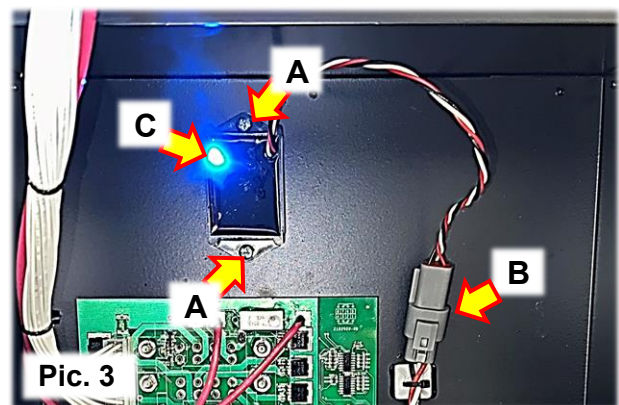
1. Fully open the access door above the control box and using a Phillips screw driver, remove the two screws at lower front control panel while holding the control panel in place by hand so it doesn't suddenly drop from its position. Ref. Pic. 1



2. Carefully lower the front control panel, flip it over and securely place it as shown in Pic. 2-A to expose the control box interior and still be able to reach behind the control box. (**Use care not to pull wires from the key switch**).



3. Locate the predrilled holes up inside the back of the control box. Ref. Pic. 3
 - Remove the nut and lock washer from the receiver's coaxial cable connector.
 - Align the receiver's mounting holes with the predrilled holes and secure in place with two 8/32" bolts (not included). Ref. Pic. 3-A
 - Secure coaxial cable connector with the nut and lock washer that were removed.
 - Connect the male and female triangular harness connectors together. Ref. Pic. 3-B
 - With the key switch in the ON position, ensure the receiver's blue LED light comes on. Ref. Pic. 3-C

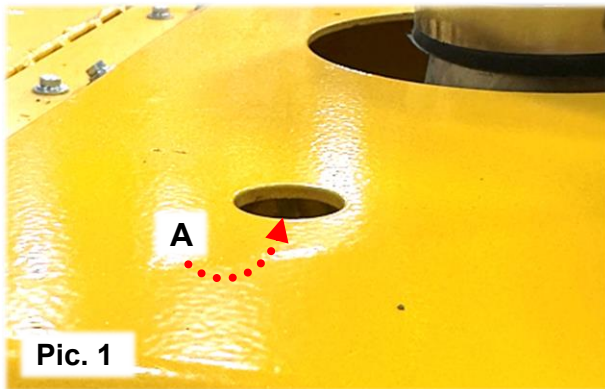


4. Carefully flip the control panel back around and place it over the control box opening.
5. Slide control panel up into position and align the two lower mounting holes while ensuring the harness is entirely in the control box and that there's no chance of wire(s) getting pinched. Install the two Phillips head screws to secure the control panel in place.

WIRELESS KIT #EM98268DP INSTALLATION INSTRUCTIONS

Antenna Installation:

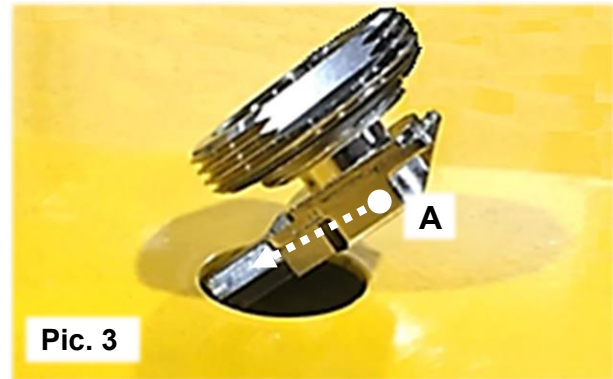
1. Locate the pre-punched 3/4" hole on top of the hood. Metal to metal contact between hood and antenna mounting is essential for best performance. Remove paint from the Inner hole diameter, about 1/8" back from the edge of the hole for good metal to metal contact. Ref. Pic. 1-A



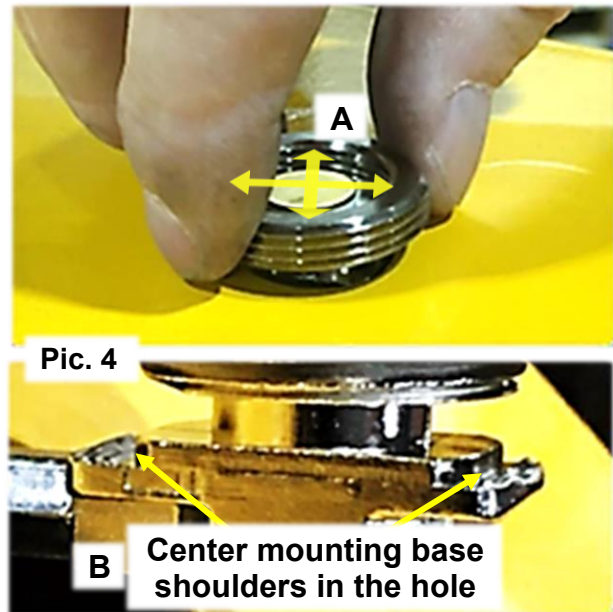
2. Remove the antenna threaded locking nut then re-install lock nut onto antenna mounting base within about a turn and a half. The O-ring side must face downward. Ref. Pic. 2-A



3. Rout the cable through the top of the hole into the hood interior. Ref. Pic. 3-A



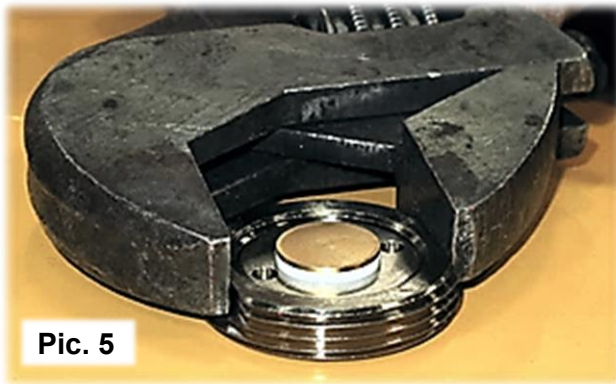
4. Insert the mounting base into the hole and maneuver via the locking nut until proper alignment of the mounting base shoulders and metal tabs to the center of the hole, the tabs will catch the underside of the hole/cover. Ref. Pic. 4-A & B



WIRELESS KIT #EM98268DP INSTALLATION INSTRUCTIONS

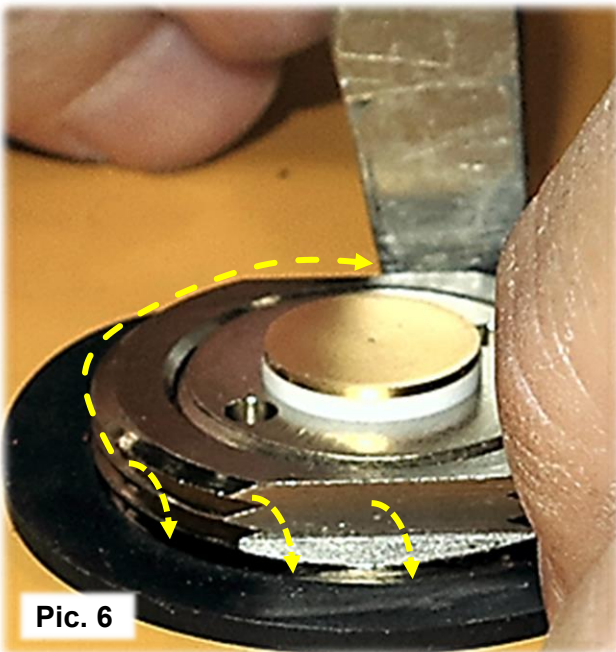
Antenna Installation Continued:

5. Initially tighten the locking nut finger tight while holding the mounting base from rotating under the hood. Using an adjustable wrench, carefully tighten the locking nut firmly while holding the mounting base from turning. (60 in. lb. max). "DO NOT OVER TIGHTEN". Ref. Pic. 5



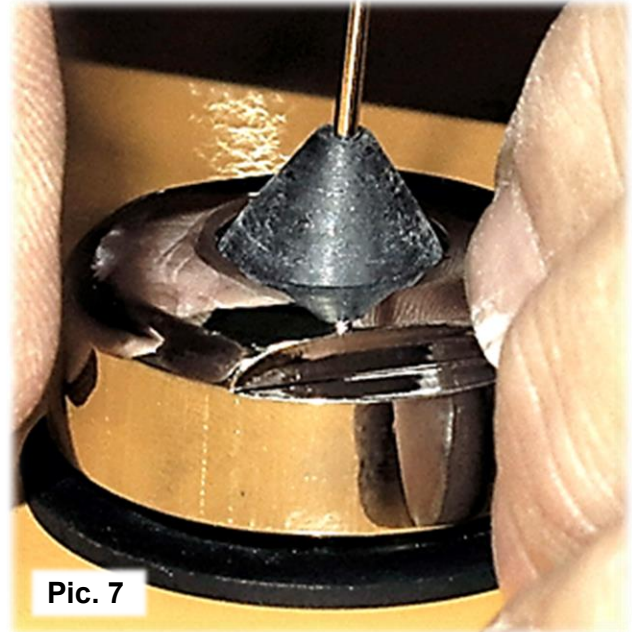
Pic. 5

6. Place the flat rubber seal over the locking nut threads and press down flat around the threads with the flat end of a screwdriver. Ref. Pic. 6



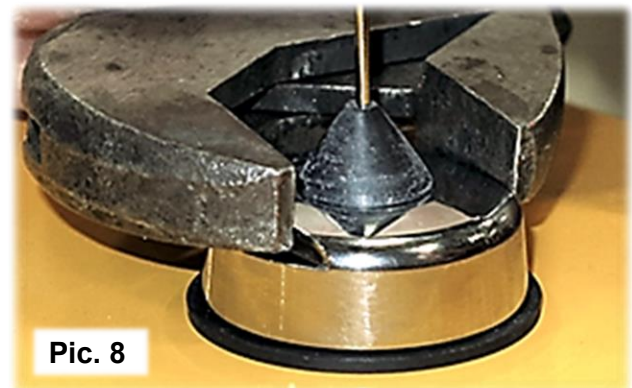
Pic. 6

7. Install the antenna securing with chrome cap, fully tighten by hand initially. Ref. Pic. 7



Pic. 7

8. Carefully tighten the chrome cap firmly with an adjustable wrench, "DO NOT OVERTIGHTEN". Ref. Pic. 8



Pic. 8

WIRELESS KIT #EM98268DP INSTALLATION INSTRUCTIONS

Antenna Installation Continued:

9. Route the end of the coaxial cable along the existing large electrical loom going up to the back of the control box and screw connector end onto the receiver's coaxial cable connector. Ref. Pic. 9



10. Using plastic tie straps, secure the coaxial cable as needed to the large electrical loom going up to the back of the control box.

Pairing Transmitter and Receiver:

1. With the key switch in the ON position and the Control Toggle Switch set to REMOTE, use the Scroll Toggle Switch to bring up screen 9.



2. On the transmitter...

- Press the "ON/OFF" button to switch ON transmitter operation, the antenna LED will blink red.
- Press the "Pump ON/OFF" button, the antenna signal LED will illuminate solid red.

3. Push and hold the Reset Toggle Switch UP, the screen should now read. ("NO RADIO" Scanning for a New Transmitter).



4. When pairing occurs/is completed, the screen should read "Communicating, pairing is completed."



WIRELESS KIT #EM98268DP INSTALLATION INSTRUCTIONS

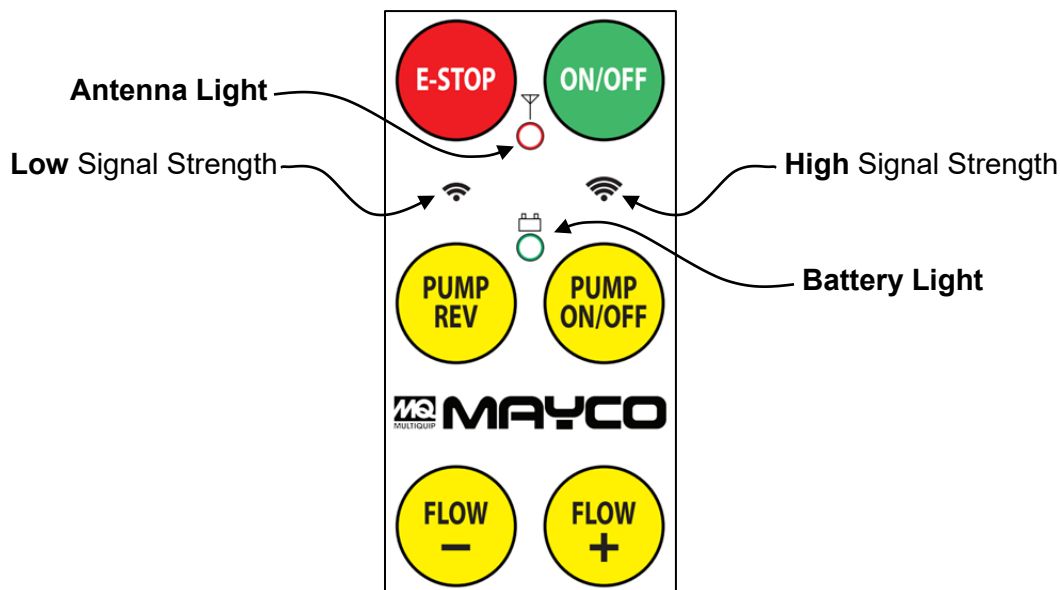
Note: The transmitter power mode is pre-set at the factory at high power signal strength setting. Maximum line of sight range 1400 feet providing approximately 20 hours battery life.

The signal strength mode can be changed to low power setting providing line of sight range 300 feet with approximate 29 hours of battery life.

Setting Transmitter Signal Strength/Range:

1. Identify the Signal Strength Buttons:

- Between the (E-Stop) and (Pump REV) buttons is the “**Low Signal Strength**” button with **Two Bars**.
- Between the (ON/OFF) and (Pump ON/OFF) buttons is the “**High Signal Strength**” button with **Three Bars**.



2. Turn ON the Transmitter:

- Press the green ON/OFF button, the Antenna Light will Blink Red.

3. Activate Signal Strength Setting Mode:

- Press and hold both Signal Strength Buttons simultaneously for 15 seconds, the Battery Light will start Blinking Green.

4. Set the Desired Signal Strength:

- Once the Battery Light is Blinking Green, press either the Low or High Signal Strength buttons.
- The Battery Light will illuminate Solid Green and then Blink Three Times to Confirm the Selection.
- If you press the desired strength button and the green light continues to blink, it indicates that the transmitter is already set to the selected power state.

Your transmitter is now set to the desired signal strength.