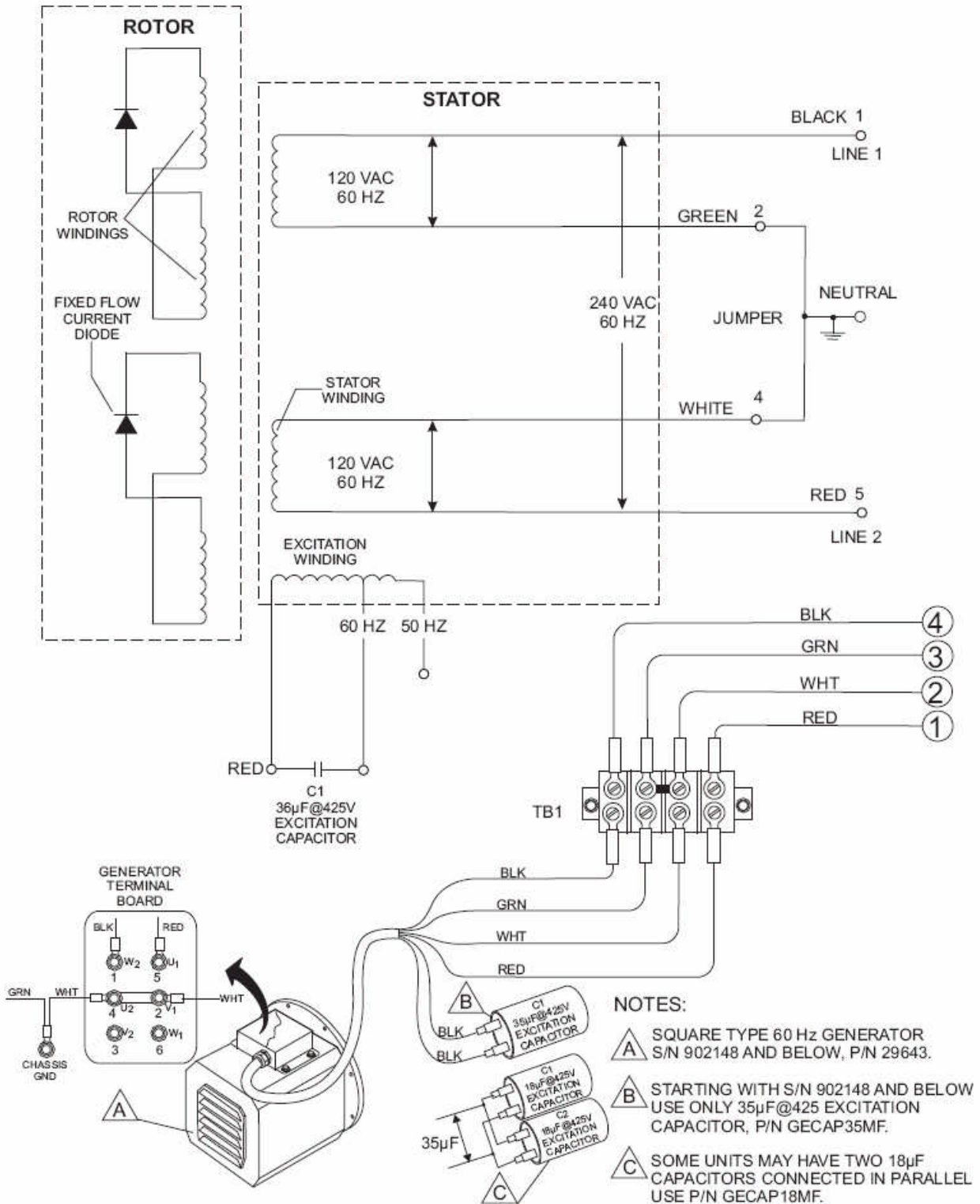
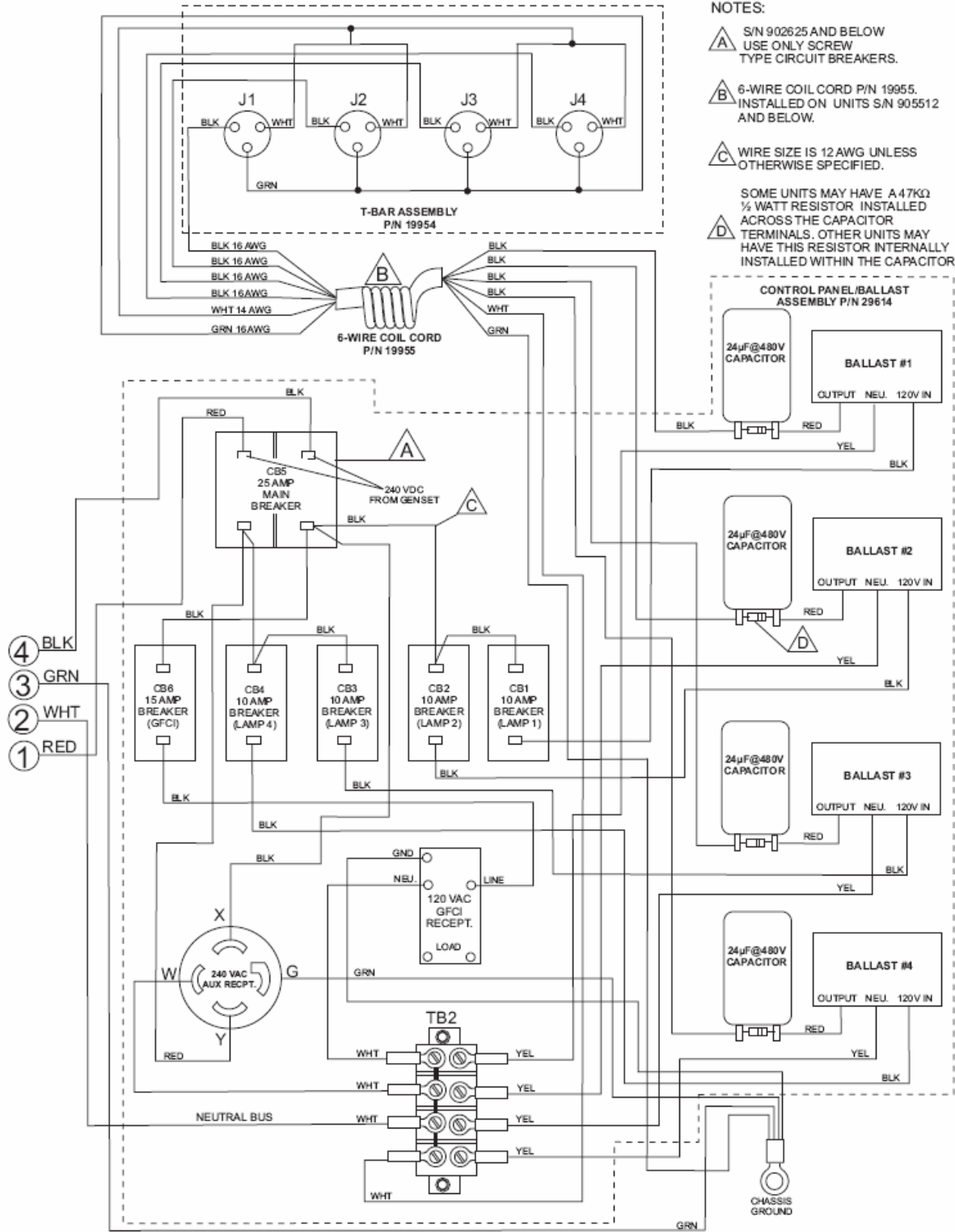


LT12 WIRING DIAGRAM — S/N 902148 AND BELOW

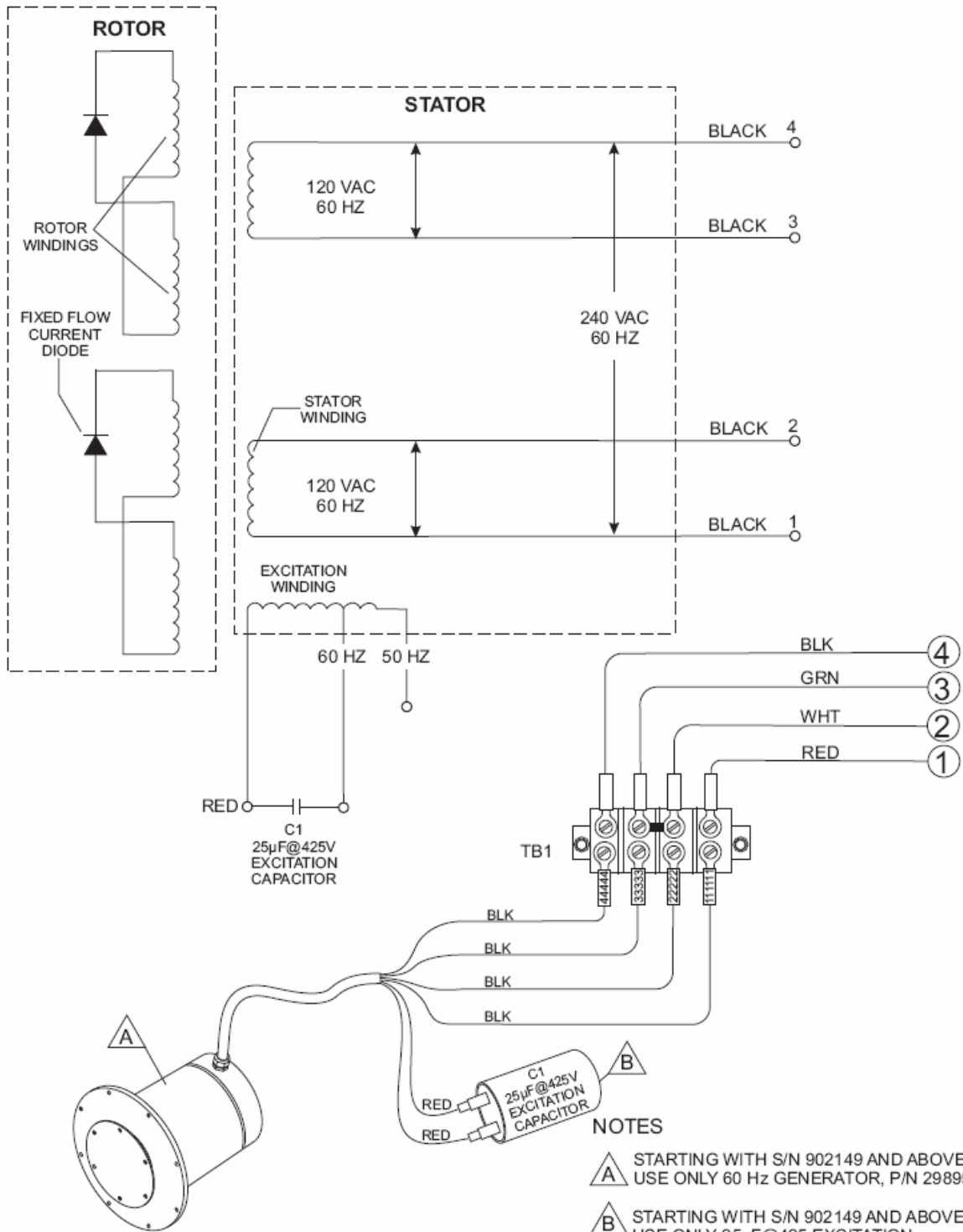


- NOTES:**
- A** SQUARE TYPE 60 Hz GENERATOR S/N 902148 AND BELOW, P/N 29643.
 - B** STARTING WITH S/N 902148 AND BELOW USE ONLY 35 μ F @ 425V EXCITATION CAPACITOR, P/N GECAP35MF.
 - C** SOME UNITS MAY HAVE TWO 18 μ F @ 425V CAPACITORS CONNECTED IN PARALLEL USE P/N GECAP18MF.

LT12 WIRING DIAGRAM — S/N 902148 AND BELOW

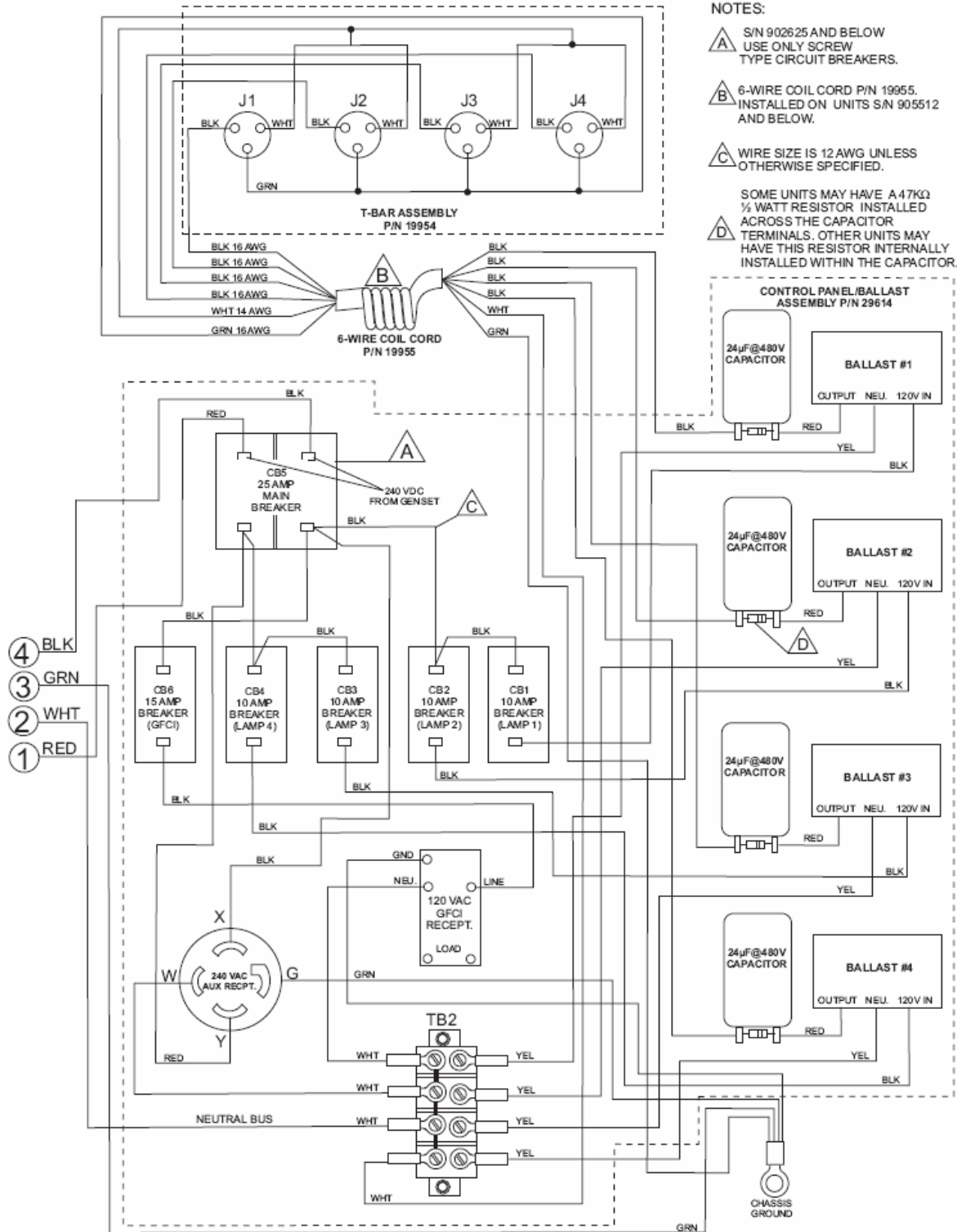


LT12 WIRING DIAGRAM — S/N 902149 TO 902625

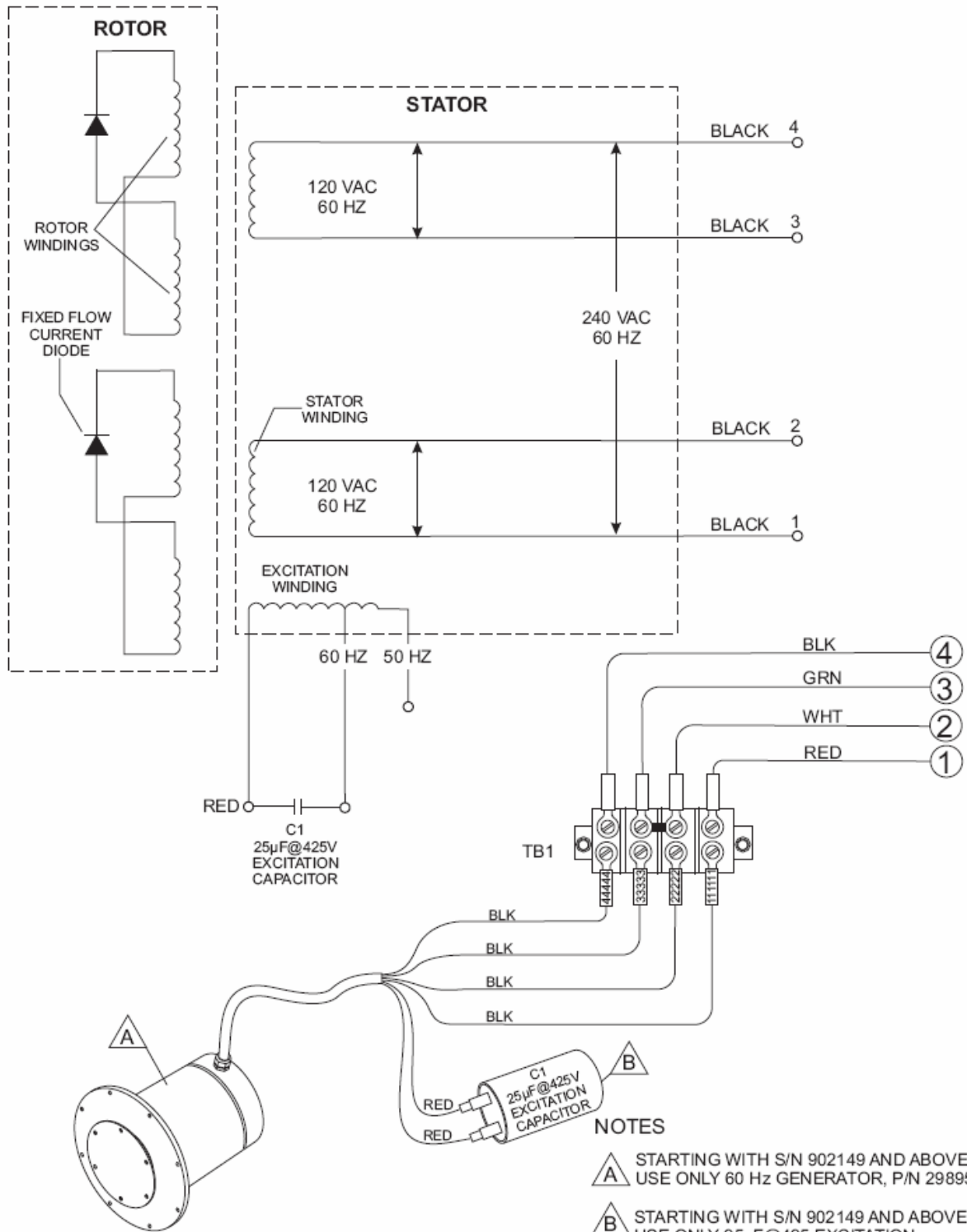


- NOTES**
- A** STARTING WITH S/N 902149 AND ABOVE USE ONLY 60 Hz GENERATOR, P/N 29895.
 - B** STARTING WITH S/N 902149 AND ABOVE USE ONLY 25µF@425V EXCITATION CAPACITOR, P/N GECAP25MF.

LT12 WIRING DIAGRAM — S/N 902149 TO 902625



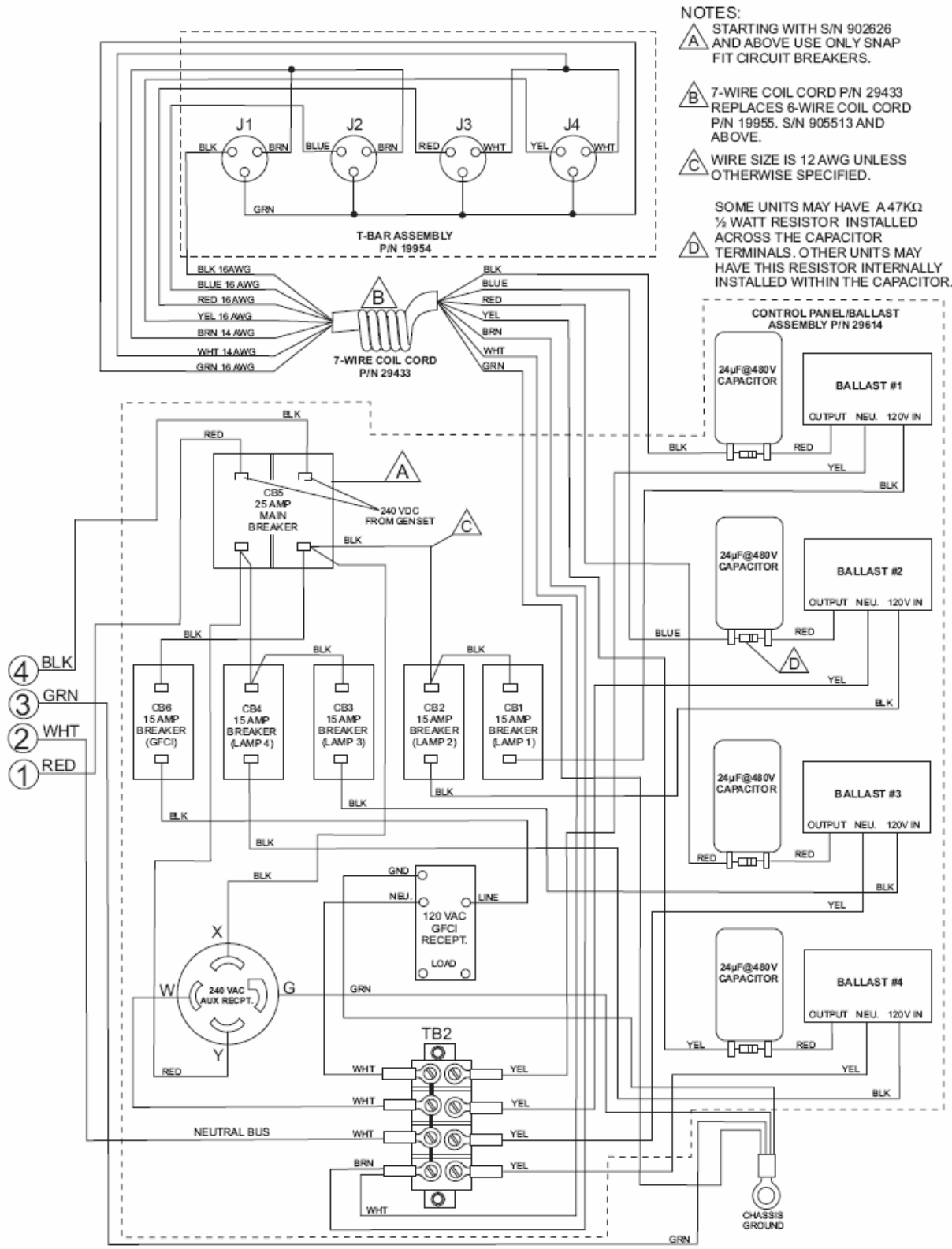
LT12 WIRING DIAGRAM — S/N 902626 AND ABOVE



NOTES

- A** STARTING WITH S/N 902149 AND ABOVE
USE ONLY 60 HZ GENERATOR, P/N 29895.
- B** STARTING WITH S/N 902149 AND ABOVE
USE ONLY $25\mu\text{F}@425\text{V}$ EXCITATION
CAPACITOR, P/N GECAP25MF.

LT12 WIRING DIAGRAM — S/N 902626 AND ABOVE

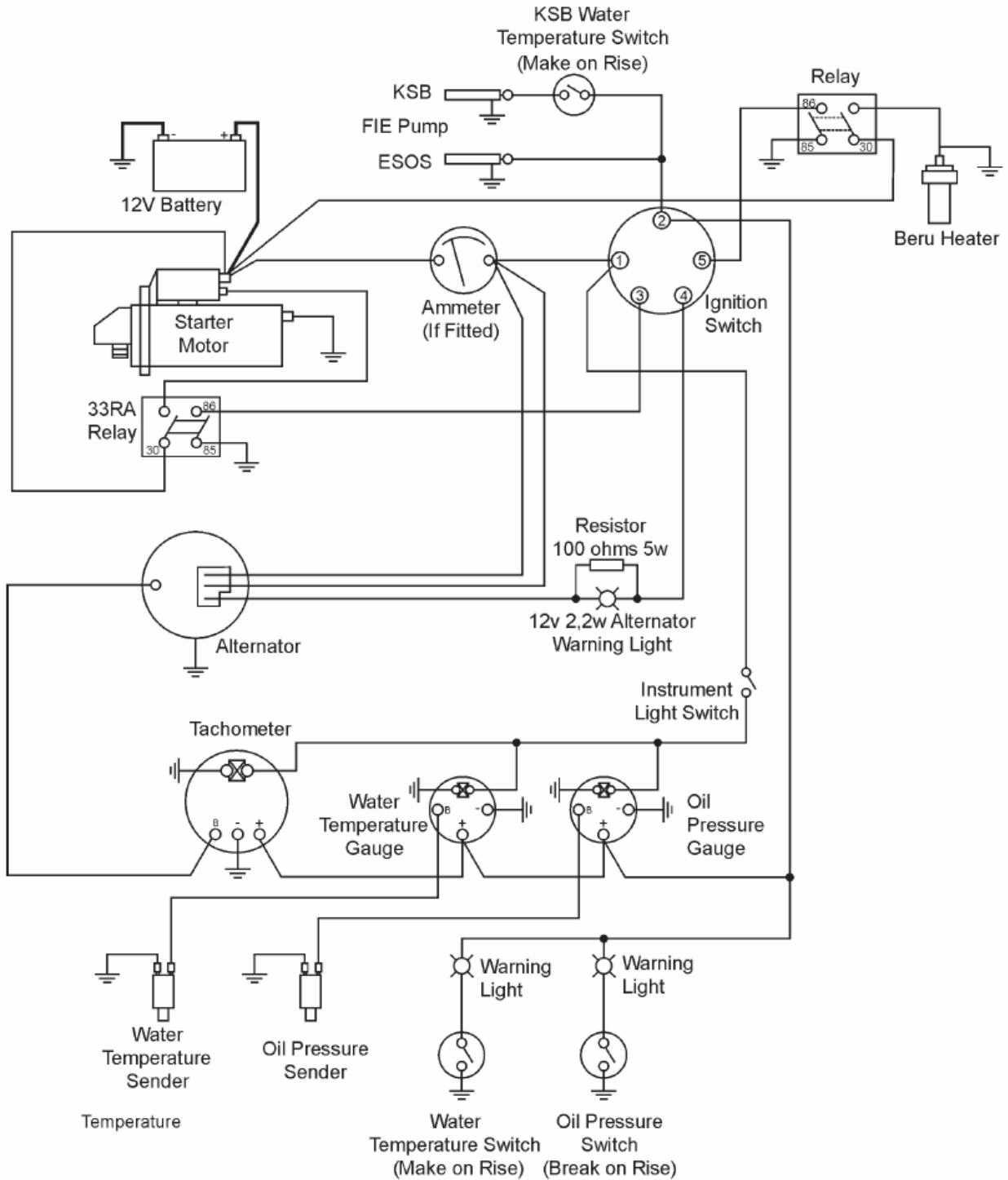


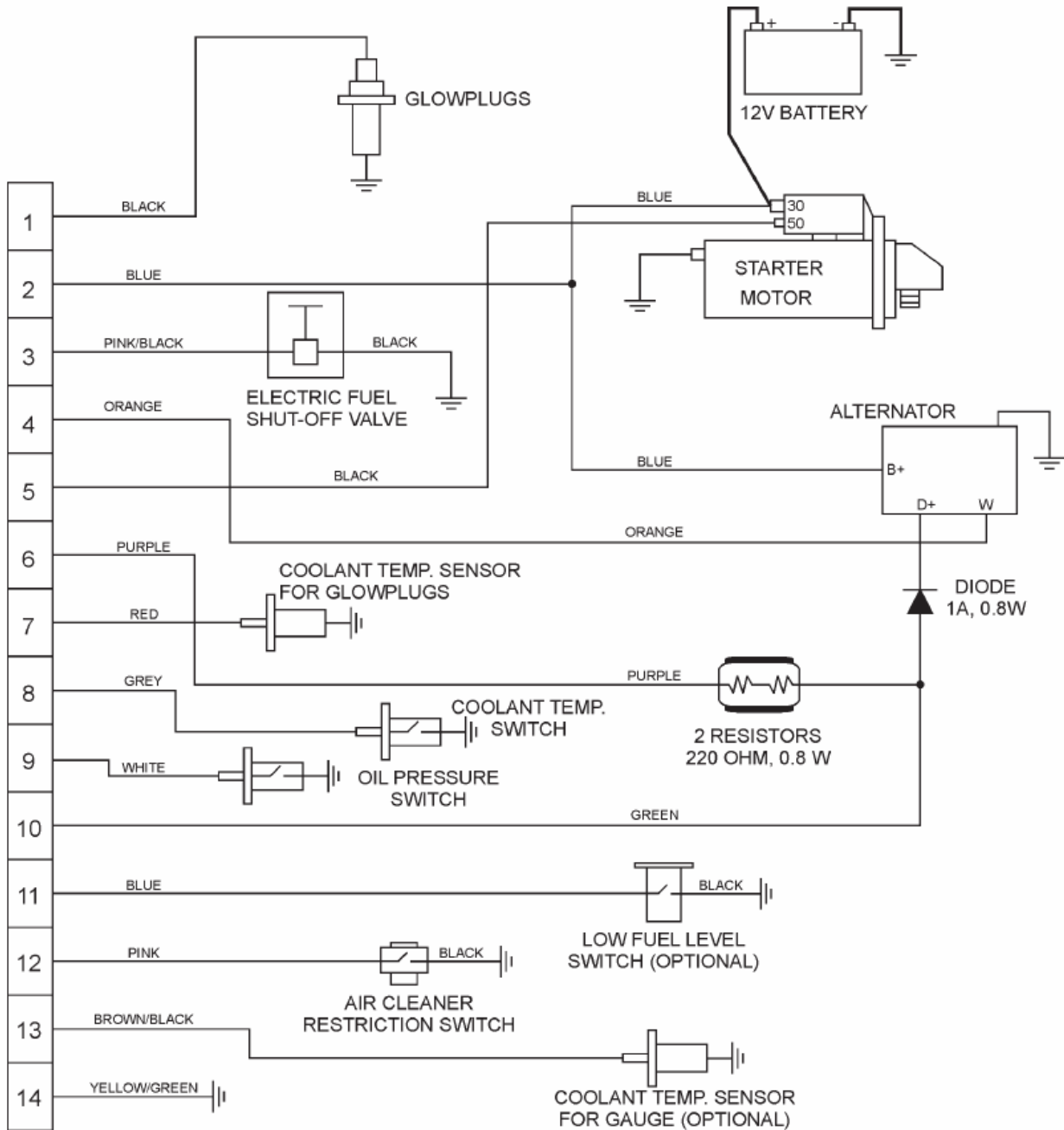
NOTES:

- ⚠ **A** STARTING WITH S/N 902626 AND ABOVE USE ONLY SNAP FIT CIRCUIT BREAKERS.
- ⚠ **B** 7-WIRE COIL CORD P/N 29433 REPLACES 6-WIRE COIL CORD P/N 19955. S/N 905513 AND ABOVE.
- ⚠ **C** WIRE SIZE IS 12 AWG UNLESS OTHERWISE SPECIFIED.
- ⚠ **D** SOME UNITS MAY HAVE A 47KΩ ½ WATT RESISTOR INSTALLED ACROSS THE CAPACITOR TERMINALS. OTHER UNITS MAY HAVE THIS RESISTOR INTERNALLY INSTALLED WITHIN THE CAPACITOR.

LT12P

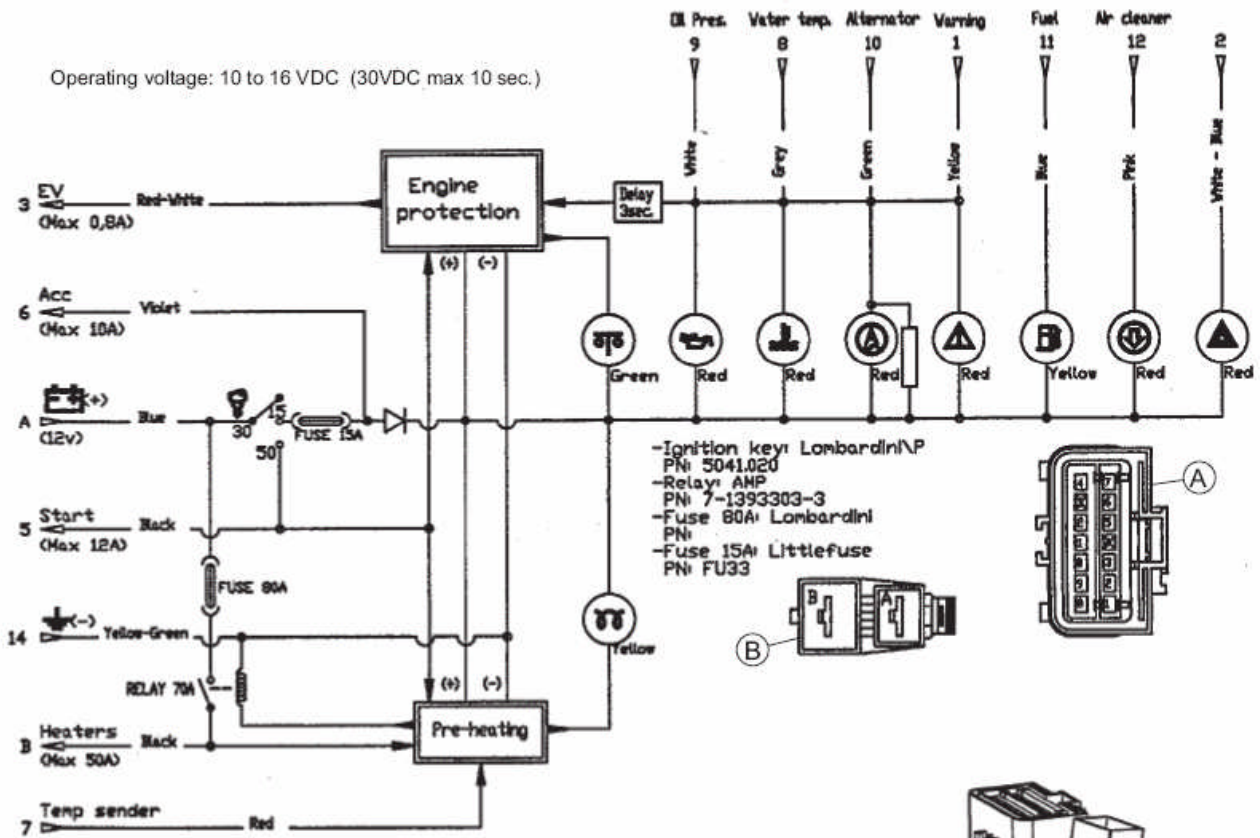
PERKINS ENGINE WIRING DIAGRAM



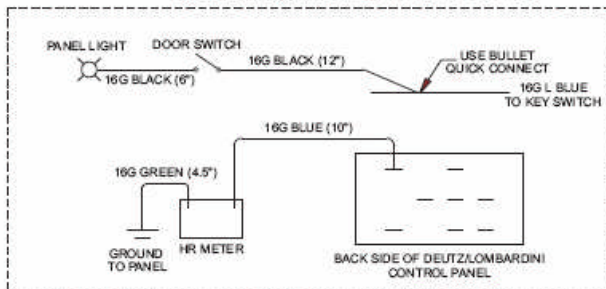


LT12 CONTROL PANEL/IGNITION WIRING DIAGRAM

Operating voltage: 10 to 16 VDC (30VDC max 10 sec.)



DEUTZ/LOMBARDINI SPECIFIC



PERKINS SPECIFIC

