



LT6K Light Tower

Mast Wire Cable Clip Installation Instructions

The following instructions are intended to assist the user in the installation of mast wire cable clips for use on the LT6K Light Tower. Please read all assembly instructions before installing the kit.

REQUIRED TOOLS

- Wire Cutters
- Needle Nose Pliers
- Torque Wrench

PARTS

Verify that all parts are accounted for. See Figure 1 and Table 1.

Table 1. LT6K Mast Wire Cable Clip Installation Kit

Item No.	Part No.	Description	QTY.	Remarks
1	34881	LT6K Mast Cable Service Kit	1	Includes items 2-5
2	34794	Cable, Upper Mast 112 Inches	1	
3	34882	Wire Rope Clip 3/16" Forged	2	
4	19200	Thimble 3/16" Wire	1	
5	34898	Mast Wire Cable Kit Clip Instructions	1	

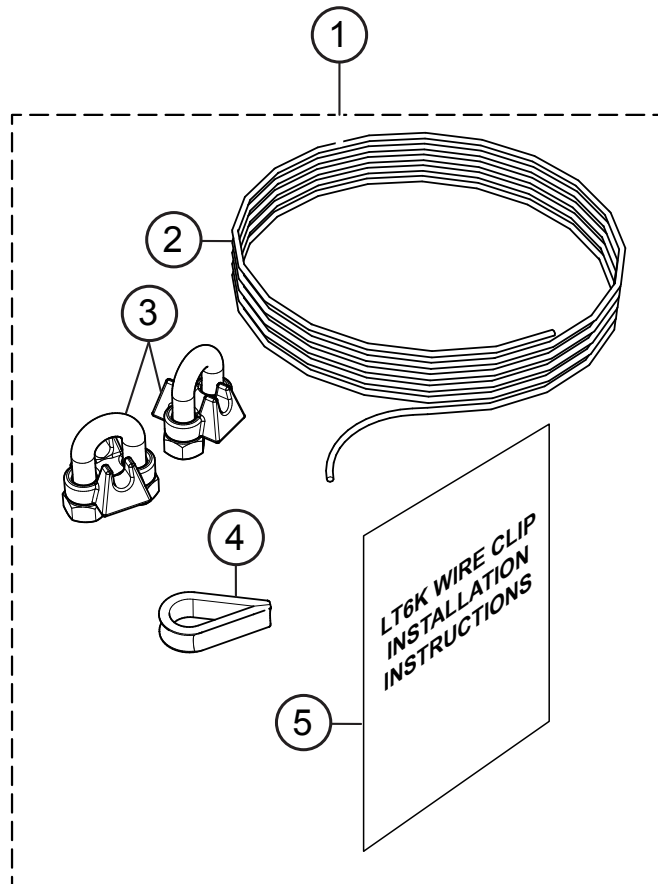


Figure 1. LT6K Mast Cable Service Kit

WORK SAFELY!

Only a **qualified service technician** with proper training should perform this installation. Follow all shop safety rules when performing this installation.

PREPARATION

1. Make sure the light tower is turned off and engine is cool.
2. Place the light tower in an area free of dirt and debris. Make sure it is on secure level ground with chock blocks underneath each wheel to prevent the light tower from rolling.

NOTICE

Before performing this procedure it is assumed that the mast wire cable has been threaded/routed correctly and the mast is attached to the light tower. These instructions are intended only for the **thimble** connection on the lower mast.

PROCEDURE

1. With the lower mast section **fully** retracted (contact with stop block), remove existing cotter and clevis pins from mast anchor as shown in Figure 3A.
2. Next, remove shackle and existing thimble from mast anchor. Discard thimble.
3. Insert new thimble (P/N 19200) onto shackle as shown in Figure 3B.
4. Attach shackle and thimble back onto mast anchor. Secure shackle using cotter and clevis pins as shown in Figure 3B.
5. Thread the loose end of the wire cable (P/N 34794) through the thimble as shown in Figure 3C.
6. Continue to thread the loose end of the wire cable through clip #1 (P/N 34882). Install this clip at the **closed end** of the thimble as shown in Figure 3D. Make sure to position clip as close to the thimble as possible. Pull wire cable tight.

NOTICE

Please note orientation of the clip saddle and U-bolt (Figure 2). Saddle portion must be on **load side** of the wire cable and the U-bolt on the **free side**.

7. Tighten the U-bolt nuts on clip #1 snugly to prevent the wire cable from slipping.
8. Install clip #2 (P/N 34882) as close to the pulley bracket (Figure 3E) as possible. Thread wire cable through clip #2.
9. Tighten the U-bolt nuts on clip #2 snugly to prevent the wire cable from slipping.
10. Torque the U-bolt nuts (Figure 3E) on clips #1 and #2 evenly, alternate from one nut to the other until reaching the recommended torque (7.5 ft. lb/10 N·m).
11. Cut off excess wire cable (Figure 3E) outside of the second clip (usually 6-8 inches excess).

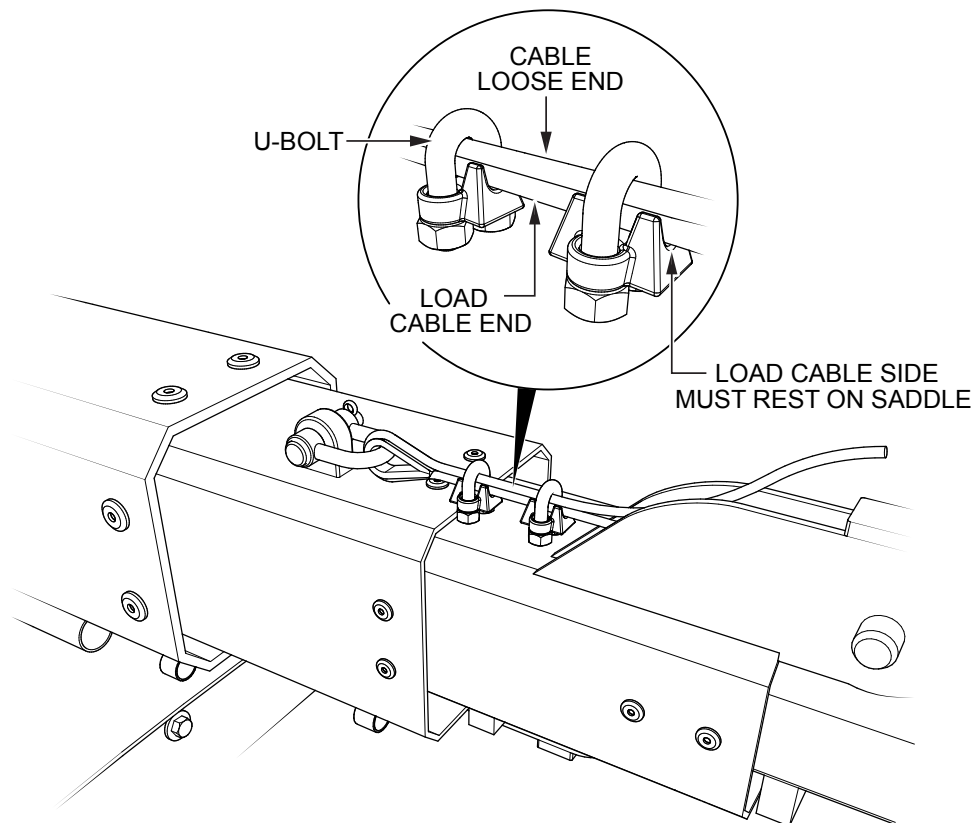


Figure 2. Clip Saddle Orientation

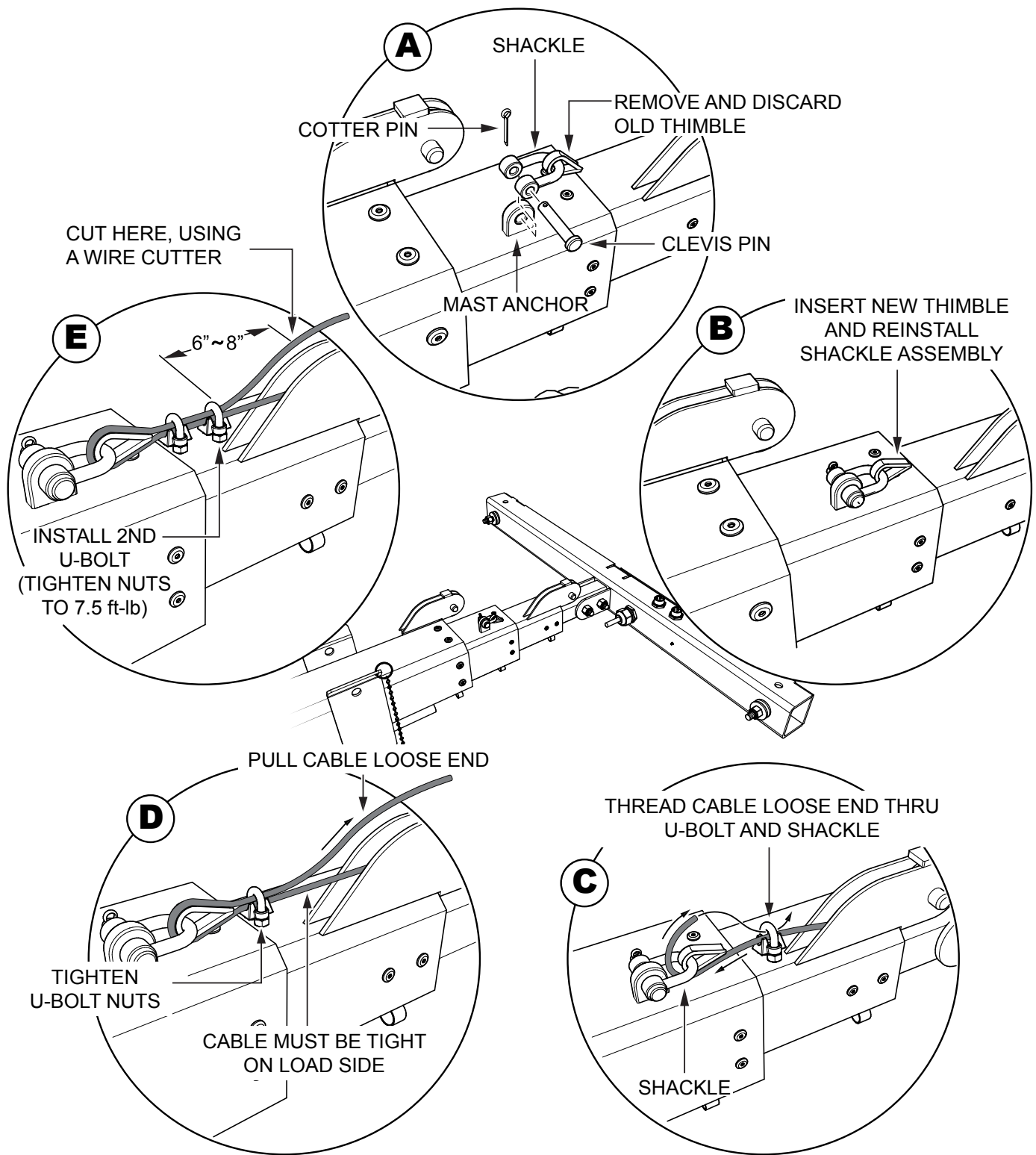


Figure 3. Mast Wire Cable Clip Instructions



LT6K Light Tower

Mast Wire Cable Clip Installation Instructions

HERE'S HOW TO GET HELP

PLEASE HAVE THE MODEL AND SERIAL
NUMBER ON-HAND WHEN CALLING

UNITED STATES

Multiquip Corporate Office

18910 Wilmington Ave. Tel. (800) 421-1244
Carson, CA 90746 Fax (310) 537-3927
Contact: mq@multiquip.com

Service Department

800-421-1244 Fax: 310-537-4259
310-537-3700

Technical Assistance

800-478-1244 Fax: 310-943-2238

MQ Parts Department

800-427-1244 Fax: 800-672-7877
310-537-3700 Fax: 310-637-3284

Warranty Department

800-421-1244 Fax: 310-943-2249
310-537-3700

CANADA

Multiquip

4110 Industriel Boul. Tel: (450) 625-2244
Laval, Quebec, Canada H7L 6V3 Tel: (877) 963-4411
Contact: infocanda@multiquip.com Fax: (450) 625-8664

UNITED KINGDOM

Multiquip (UK) Limited Head Office

Unit 2, Northpoint Industrial Estate, Tel: 0161 339 2223
Globe Lane, Fax: 0161 339 3226
Dukinfield, Cheshire SK16 4UJ
Contact: sales@multiquip.co.uk

© COPYRIGHT 2016, MULTIQUIP INC.

Multiquip Inc and the MQ logo are registered trademarks of Multiquip Inc. and may not be used, reproduced, or altered without written permission. All other trademarks are the property of their respective owners and used with permission.

The information and specifications included in this publication were in effect at the time of approval for printing. Illustrations, descriptions, references and technical data contained in this document are for guidance only and may not be considered as binding. Multiquip Inc. reserves the right to discontinue or change specifications, design or the information published in this publication at any time without notice and without incurring any obligations.

Your Local Dealer is:

