

# PARTS MANUAL



**MODELS**  
**MQ600H**  
**MQ600HTB**  
**MQ600HTP**  
**TRASH PUMP**  
**(HATZ 4H50TIC DIESEL ENGINE)**  
**(Cattron Control Panels 500/640)**

Revision #4 (09/03/24)

To find the latest revision of this  
publication, visit our website at:  
[www.multiquip.com](http://www.multiquip.com)



THIS MANUAL MUST ACCOMPANY THE EQUIPMENT AT ALL TIMES.

**MQ600H-HTB-HTP  
Trash Pump**

Explanation Of Code In Remarks Column..... 4  
Suggested Spare Parts ..... 5

**Component Drawings**

Nameplate And Decals ..... 6-7  
Impeller, Cleanout, And Discharge Assembly..... 8-9  
Pump — Suction Side Assembly ..... 10-11  
Intermediate Plate Assembly ..... 12-13  
Trailer Assembly ..... 14-15  
Engine Mounting Assembly ..... 16-17  
Battery/Engine Cover Assembly ..... 18-19  
Air Filter Assembly ..... 20-21  
Control Box Assembly ..... 22-23  
Hydraulic Brake Line Assembly ..... 24-25  
Hatz 4H50TIC Engine Service Parts ..... 26-27

**NOTICE**  
Specifications and part numbers are subject to change without notice.



# EXPLANATION OF CODE IN REMARKS COLUMN

The following section explains the different symbols and remarks used in the Parts section of this manual. Use the help numbers found on the back page of the manual if there are any questions.

## NOTICE

The contents and part numbers listed in the parts section are subject to change without notice. Multiquip does not guarantee the availability of the parts listed.

## SAMPLE PARTS LIST

NO.	PART NO.	PART NAME	QTY.	REMARKS
1	12345	BOLT .....	1	INCLUDES ITEMS W/%
2%		WASHER, 1/4 IN. ....		NOT SOLD SEPARATELY
2%	12347	WASHER, 3/8 IN. ...	1	MQ-45T ONLY
3	12348	HOSE .....	A/R	MAKE LOCALLY
4	12349	BEARING .....	1	S/N 2345B AND ABOVE

## NO. Column

**Unique Symbols** — All items with same unique symbol (@, #, +, %, or >) in the number column belong to the same assembly or kit, which is indicated by a note in the “Remarks” column.

**Duplicate Item Numbers** — Duplicate numbers indicate multiple part numbers, which are in effect for the same general item, such as different size saw blade guards in use or a part that has been updated on newer versions of the same machine.

## NOTICE

When ordering a part that has more than one item number listed, check the remarks column for help in determining the proper part to order.

## PART NO. Column

**Numbers Used** — Part numbers can be indicated by a number, a blank entry, or TBD.

TBD (To Be Determined) is generally used to show a part that has not been assigned a formal part number at the time of publication.

A blank entry generally indicates that the item is not sold separately or is not sold by Multiquip. Other entries will be clarified in the “Remarks” Column.

## QTY. Column

**Numbers Used** — Item quantity can be indicated by a number, a blank entry, or A/R.

A/R (As Required) is generally used for hoses or other parts that are sold in bulk and cut to length.

A blank entry generally indicates that the item is not sold separately. Other entries will be clarified in the “Remarks” Column.

## REMARKS Column

Some of the most common notes found in the “Remarks” Column are listed below. Other additional notes needed to describe the item can also be shown.

**Assembly/Kit** — All items on the parts list with the same unique symbol will be included when this item is purchased.

Indicated by:

“INCLUDES ITEMS W/(unique symbol)”

**Serial Number Break** — Used to list an effective serial number range where a particular part is used.

Indicated by:

“S/N XXXXX AND BELOW”

“S/N XXXX AND ABOVE”

“S/N XXXX TO S/N XXX”

**Specific Model Number Use** — Indicates that the part is used only with the specific model number or model number variant listed. It can also be used to show a part is NOT used on a specific model or model number variant.

Indicated by:

“XXXXX ONLY”

“NOT USED ON XXXX”

**“Make/Obtain Locally”** — Indicates that the part can be purchased at any hardware shop or made out of available items. Examples include battery cables, shims, and certain washers and nuts.

**“Not Sold Separately”** — Indicates that an item cannot be purchased as a separate item and is either part of an assembly/kit that can be purchased, or is not available for sale through Multiquip.

## SUGGESTED SPARE PARTS

### MQ600H/HTB/HTP TRASH PUMP

1 to 3 units

Qty.	P/N	Description
3	34488	MECHANICAL SEAL
3	511245	SLEEVE, SEAL (SHAFT)
3	34491	GASKET, FRONT COVER
1	511219	IMPELLER
1	511268	WEAR PLATE
1	34489	FLAP VALVE
1	34493	GASKET
1	511259	OIL SEAL
1	34495	GASKET
1	511261	BEARING
1	511262	BEARING
1	511258	SHAFT
1	511236	OIL SEAL
1	34492	GASKET

### HATZ 4H50TIC DIESEL ENGINE

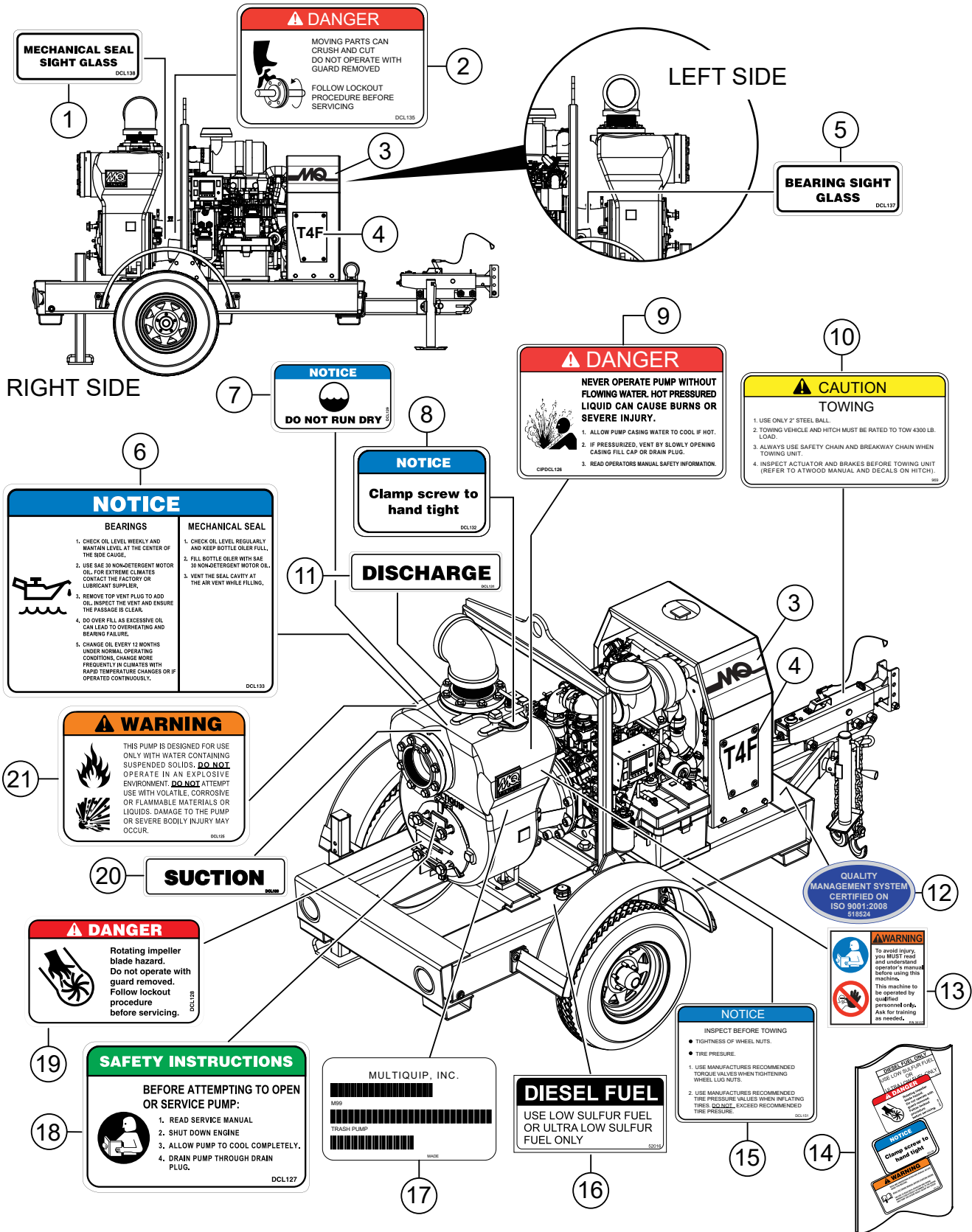
1 to 3 units

Qty.	P/N	Description
1	50638000	PRE FUEL FILTER
1	60638100	FUEL FILTER
1	50638300	AIR FILTER, SECONDARY
1	50638200	AIR FILTER, PRIMARY
1	50629401	POLY V-BELT 768
1	60640500	OIL SEPARATOR
1	50628800	OIL FILTER
1	50640500	FILTER, BREATHER LT

#### NOTICE

Part numbers on this Suggested Spare Parts list may supersede/replace the part numbers shown in the following parts lists.

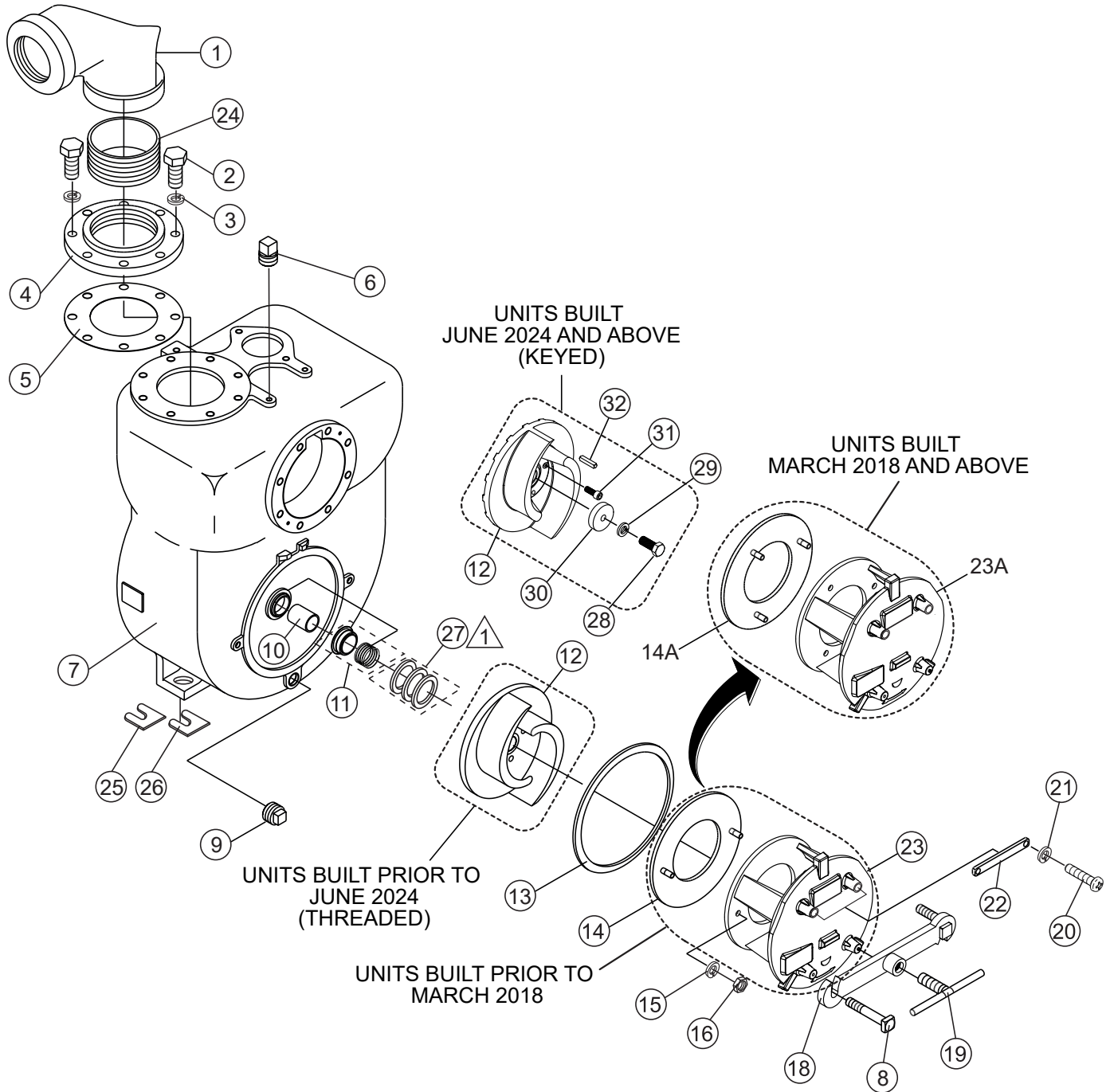
# NAMEPLATE AND DECALS



## NAMEPLATE AND DECALS

<u>NO.</u>	<u>PART NO.</u>	<u>PART NAME</u>	<u>QTY.</u>	<u>REMARKS</u>
1#	DCL138	DECAL: MEC. SEAL SIGHT GLASS	1	
2#	DCL135	DECAL: WARNING, MOVING PARTS	1	
3#	804938	DECAL: MQ LOGO	2	
4#	804939	DECAL: TIER 4F LOGO	2	
5#	DCL137	DECAL: BEARING SIGHT GLASS	1	
6#	DCL133	DECAL: NOTICE, BEARING/MEC. SEAL	1	
7#	DCL129	DECAL: WARNING, DO NOT RUN DRY	1	
8#	DCL132	DECAL: NOTICE, CLAMP SCREW TIGHT	1	
9#	DCL126	DECAL: WARNING, FILL CAP	1	
10#	EM969	DECAL: TOWING	1	
11#	DCL131	DECAL: DISCHARGE	1	
12#	518524	DECAL: QUALITY MANAGEMENT, ISO	1	
13#	35137	DECAL: READ MANUAL/ASK FOR TRAINING	1	
14	518950	KIT, DECAL.....	1	INCLUDES ITEMS W/#
15#	DCL151	DECAL: NOTICE, TIRE PRESSURE/TORQUE	2	
16#	520616	DECAL: DIESEL FUEL, LOW SULFUR	1	
17		DECAL: SERIAL NO.....	1	CONTACT MQ PARTS DEPT. W/ MODEL AND S/N
18#	DCL127	DECAL: WARNING, SAFETY INSTRUCTIONS	1	
19#	DCL128	DECAL: WARNING ROTATING IMPELLER	1	
20#	DCL130	DECAL: SUCTION	1	
21#	DCL125	DECAL: WARNING, EXPLOSIVE OPERATION	1	

# IMPELLER, CLEANOUT, AND DISCHARGE ASSY.



**NOTES:**



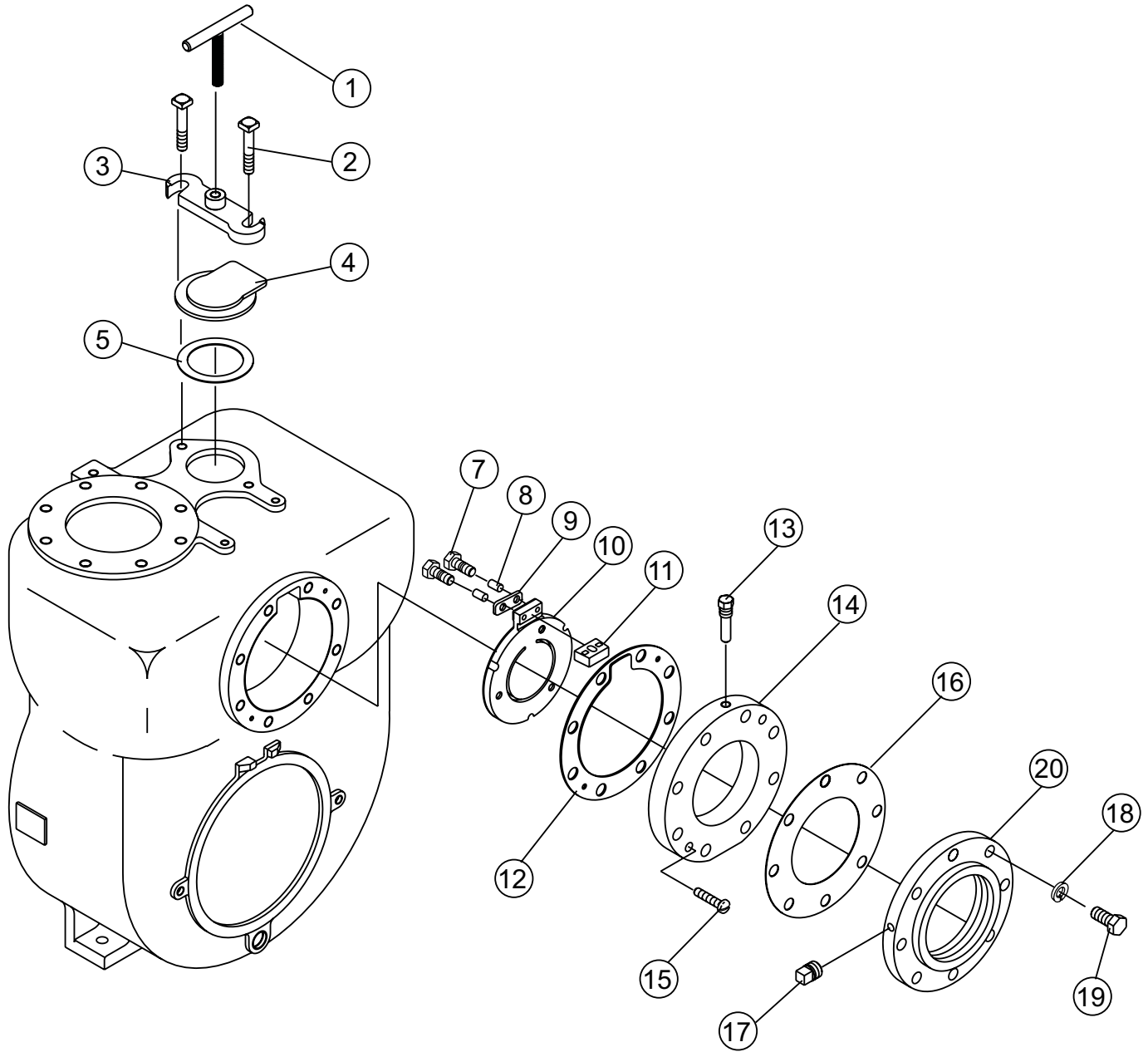
ADJUST REAR OF IMPELLER TO ADAPTER COVER  
 .025 ~ .040 IN. (0.64 ~ 1.02 MM) USING SHIMS, ITEM 27  
 AS REQUIRED.



## IMPELLER, CLEANOUT, AND DISCHARGE ASSY.

<u>NO.</u>	<u>PART NO.</u>	<u>PART NAME</u>	<u>QTY.</u>	<u>REMARKS</u>
1	511223	90° ELBOW	1	
2	EM151	HHCS 3/4" X 2", G5.....	8.....	REPLACES P/N 509078
3	492628	WASHER, LOCK 3/4"	8	
4	511225	RETAINER	1	
5	34496	GASKET	1	
6	511220	PIPE NIPPLE	1	
7	511217	MAIN HOUSING	1	
8	511832	MACHINE BOLT	2	
9	491214	DRAIN PLUG, 1"	1	
10	511245	SLEEVE, SEAL (SHAFT)	1	
11	34488	MECHANICAL SEAL ASSY.	1	
12	511219	IMPELLER (THREADED).....	1.....	S/N R041205 AND BELOW
12	522515	IMPELLER (KEYED).....	1.....	S/N R041206 AND ABOVE
13	34491	GASKET	1	
14	511268	WEAR PLATE (2 STUD).....	1.....	S/N J030138 AND BELOW
14A	521940	WEAR PLATE (3 STUD).....	1.....	S/N J030139 AND ABOVE
15	511302	WASHER, LOCK	2	
16	508704	NUT	2	
18	511276	RETAINING BAR	1	
19	511837	LOCK BOLT, FRONT COVER	1	
20	011208025	BOLT M8X25, G8.....	4.....	REPLACES P/N 508342
21	030208200	WASHER, LOCK M8.....	4.....	REPLACES P/N 506597
22	511308	HANDLE	2	
23	511272	FRONT COVER (2 STUD).....	1.....	S/N J030138 AND BELOW
23A	521941	FRONT COVER (3 STUD).....	1.....	S/N J030139 AND ABOVE
24	511221	6-INCH NPT NIPPLE	1	
25	511838	SHIM, BASE 0.5 MM	AR	
26	511839	SHIM, BASE 1.0 MM	AR	
27	511244	SHIM, KIT, IMPELLER	AR	
28	EM492455	HEX. HEAD BOLT, 1/2" X 1-1/2".....	1.....	S/N R041206 AND ABOVE
29	6109180	WASHER, LOCK 1/2".....	1.....	S/N R041206 AND ABOVE
30	522516	WAHSER, FLAT, 1/2" GALV.....	1.....	S/N R041206 AND ABOVE
31	522517	SOCKET HEAD SCREW, 3/8"NC X 1" SS.....	2.....	S/N R041206 AND ABOVE
32	10057-034	KEY, 3/8" X 2" STEEL.....	1.....	S/N R041206 AND ABOVE

# PUMP — SUCTION SIDE ASSY.

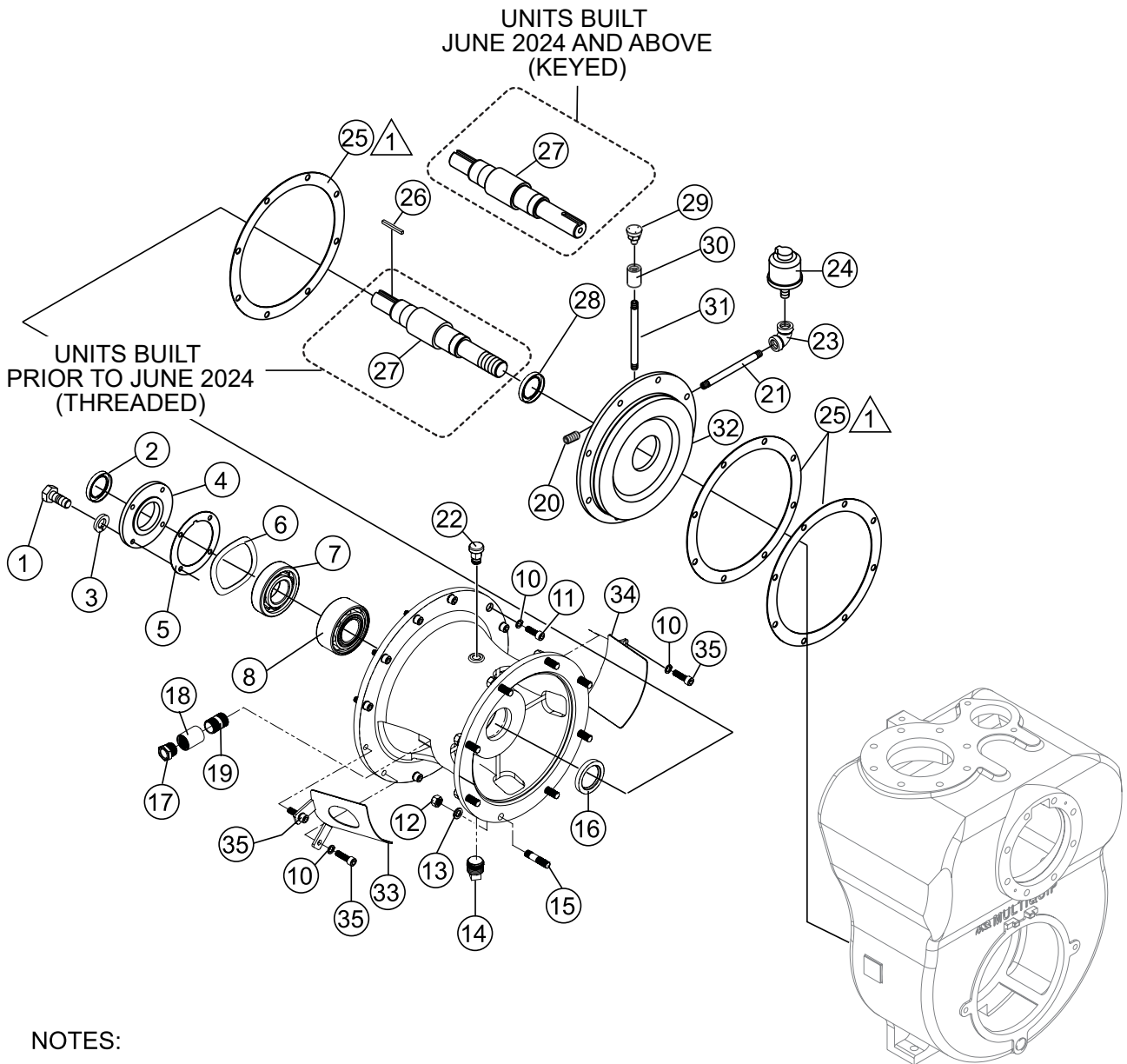


## **PUMP — SUCTION SIDE ASSY.**


---

<u>NO.</u>	<u>PART NO.</u>	<u>PART NAME</u>	<u>QTY.</u>	<u>REMARKS</u>
1	511836	LOCK BOLT, FILL	1	
2	512061	MACHINE BOLT 5/8" NC 2-1/2" G5	2	
3	511243	RETAINER, FILL	1	
4	511238	COVER, FILL	1	
5	34494	GASKET	1	
7	511303	HHCS, 5/16" X 1-1/4" SS	2	
8	511304	SPACER	2	
9	511305	RETAINER PLATE	1	
10	34489	FLAP VALVE	1	
11	511306	ADAPTER, CHECK VALVE	1	
12	34493	GASKET	1	
13	511307	PIN, CHECK VALVE	1	
14	511278	SEAT, CHECK VALVE	1	
15	511279	SLOT HEAD BOLT 5/16" X 1-1/2"	2	
16	511280	SUCTION GASKET 6"	1	
17	491210	PIPE PLUG NPT 1/4"	1	
18	492628	WASHER, LOCK 3/4"	8	
19	520732	HHCS 3/4" NC X 3-3/4" G5	8	
20	511225	RETAINER OUTLET	2	

# INTERMEDIATE PLATE ASSY.



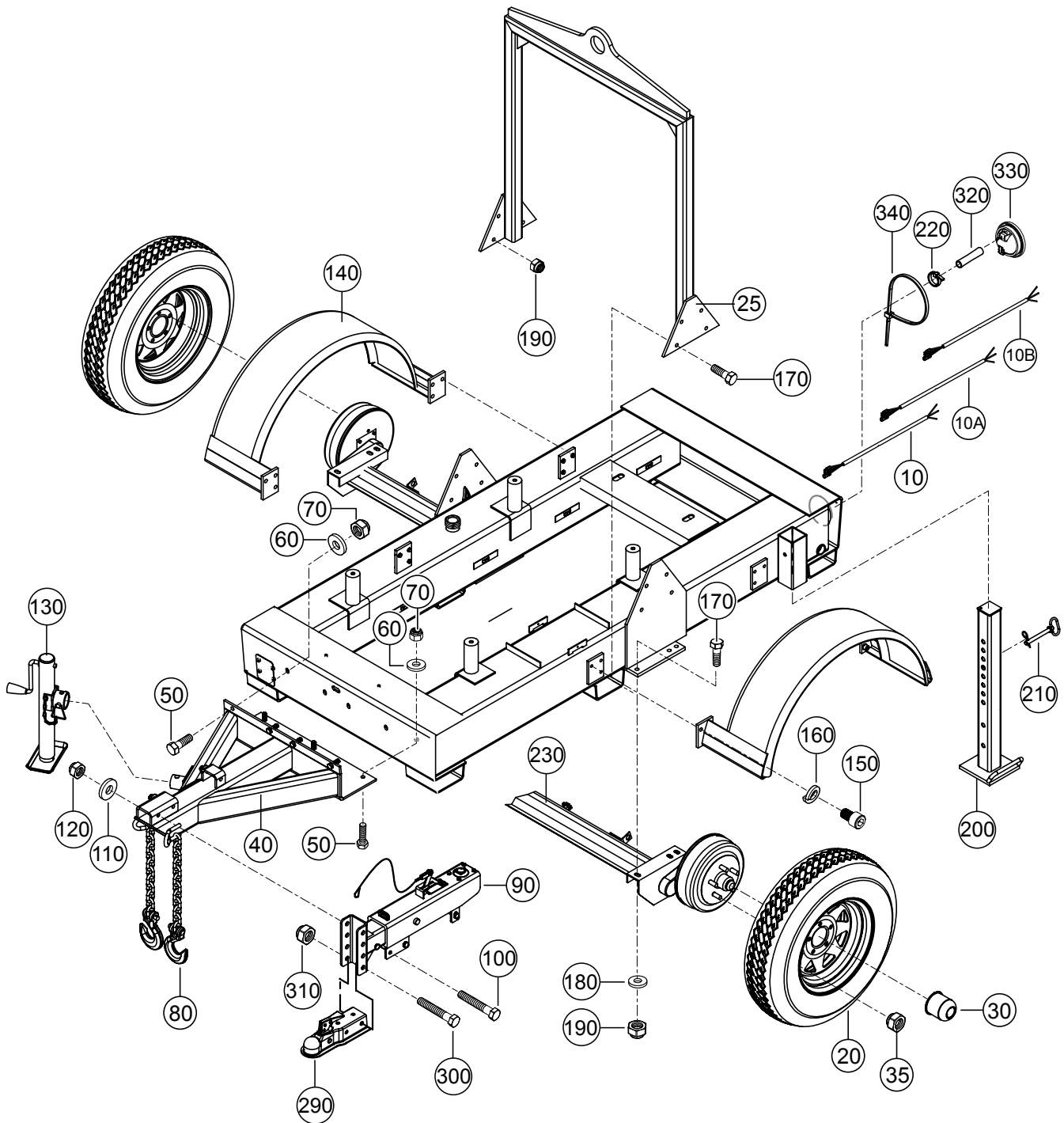
**NOTES:**

- 
 ADJUST FRONT OF IMPELLER TO WEAR PLATE  
 .010 ~ .020 IN. (0.25 ~ 0.50 MM) USING GASKETS, ITEM 25  
 AS REQUIRED.

## INTERMEDIATE PLATE ASSY.

<u>NO.</u>	<u>PART NO.</u>	<u>PART NAME</u>	<u>QTY.</u>	<u>REMARKS</u>
1	EM963610	CAP SCREW 3/8" NCX1" G5 .....	4.....	REPLACES P/N 492375
2	511259	SEAL, OIL	1	
3	0166 A	WASHER, LOCK, 3/8" .....	4.....	REPLACES P/N 492624
4	511256	RETAINER PLATE	1	
5	34495	GASKET	1	
6	34490	WAVE WASHER	1	
7	511261	BEARING	1	
8	511262	BEARING	1	
9	511235	INTERMEDIATE HOUSING	1	
10	506622	WASHER, LOCK	8	
11	EM269	ALLEN HEAD M10 X 25	8	
12	508704	HEX NUT 1/2" SS	10	
13	511302	LOCK WASHER 1/2" SS	10	
14	507657	DRAIN PLUG	1	
15	511229	STUD	8	
16	511259	SEAL, OIL	1	
17	490181	BEARING OIL SIGHT GAUGE	1	
18	506214	PIPE COUPLER	1	
19	511249	PIPE NIPPLE	1	
20	511263	PLUG	1	
21	511248	PIPE NIPPLE	1	
22	511233	BREATHER	1	
23	511833	90° ELBOW	1	
24	34501	RESERVOIR OIL, SIGHT GLASS (MEC. SEAL)	1	
25	34492	GASKET	3	
26	511257	KEY	1	
27	511258	SHAFT, IMPELLER (THREADED).....	1.....	S/N R041205 AND BELOW
27	522514	SHAFT, IMPELLER (KEYED) .....	1.....	S/N R041206 AND ABOVE
28	511236	SEAL, OIL	1	
29	511230	BREATHER	1	
30	512787	PIPE, COUPLING NPT 1"	1	
31	511248	PIPE NIPPLE	1	
32	511265	ADAPTER COVER	1	
33	511253	GUARD (BEARING SIGHT GLASS)	1	
34	511252	GUARD	1	
35	506612	ALLEN HEAD SCREW M10X35 X 1.5" G8	4	

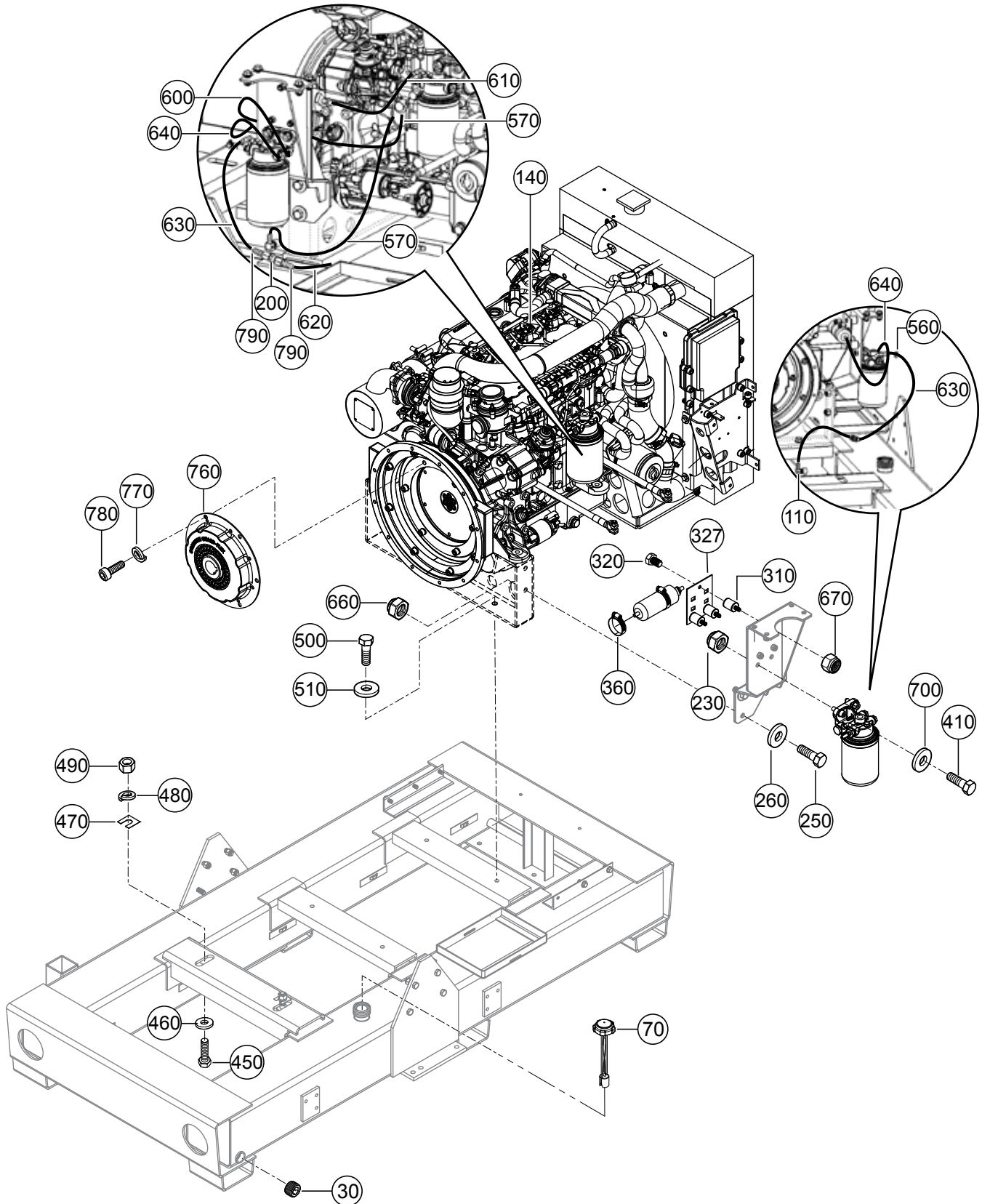
# TRAILER ASSY.



## TRAILER ASSY.

<u>NO.</u>	<u>PART NO.</u>	<u>PART NAME</u>	<u>QTY.</u>	<u>REMARKS</u>
10	515640	HARNESS, LIGHTS, 4-PIN .....	1	STANDARD
10A	29367	HARNESS, LIGHTS, 6-PIN .....	1	OPTION
10B	EE55622	HARNESS, LIGHTS, 7-PIN .....	1	OPTION
20	EM516478	TIRE WITH RIM, ST205/75D14C	2	
25	804737	LIFTING BALE	1	
30	516482	CHROMED DUST CAP	2	
35	EM26519	LUG NUT	10	
40	512340	TONGUE, TRAILER	1	
50	EM963692	BOLT, 1/2"UNCX1-1/2", G5 .....	9	REPLACES P/N 492394
60	EM621	WASHER, FLAT 1/2" .....	9	REPLACES P/N 621
70	492584	NUT, LOCK 1/2" DIA.	9	
80	516581	SAFETY HOOK W/LATCH 1/2"	2	
90	19067	ACTUATOR, BRAKE	1	
100	518257	BOLT, 1/2"UNCX4-1/2", G8	3	
110	6109170	WASHER, FLAT 1/2" DIA.....	3	REPLACES P/N 492600
120	492584	NUT, LOCK 1/2" DIA. NC	3	
130	EM25610	JACK STAND, SWIVEL	1	
140	803508	FENDER, TRAILER	2	
150	803692	BOLT, 1/2"NCX3/4" G5	12	
160	6109180	WASHER, LOCK 1/2" DIA. ....	12	REPLACES P/N 492626
170	EM963692	BOLT 1/2"UNCX1-1/2" .....	14	REPLACES P/N 492394
180	EM621	WASHER, FLAT 1/2" .....	6	REPLACES P/N 621
190	492584	NUT, LOCK 1/2" DIA.	14	
200	EM70186	JACK STAND	1	
210	EM744	CLEVIS PIN 1/2"X4"	1	
220	EM491028	WRAP, CABLE TIE .....	6	REPLACES P/N 491028
230	34564	AXLE ASSY., TORSION BAR	1	
290	29228	BALL COUPLER, 2" ADJUSTABLE	1	
300	518256	BOLT, 5/8"NCX4-1/2" G8	1	
310	EM969023	NUT, LOCK 5/8" .....	1	REPLACES P/N 492586
320	EM508242	CONNECTOR, BUTT.....	6	REPLACES P/N 508242
330	EM26536	TAIL LIGHT, BACK	2	
340	491030	WRAP, CABLE TIE	1	

# ENGINE MOUNTING ASSY.

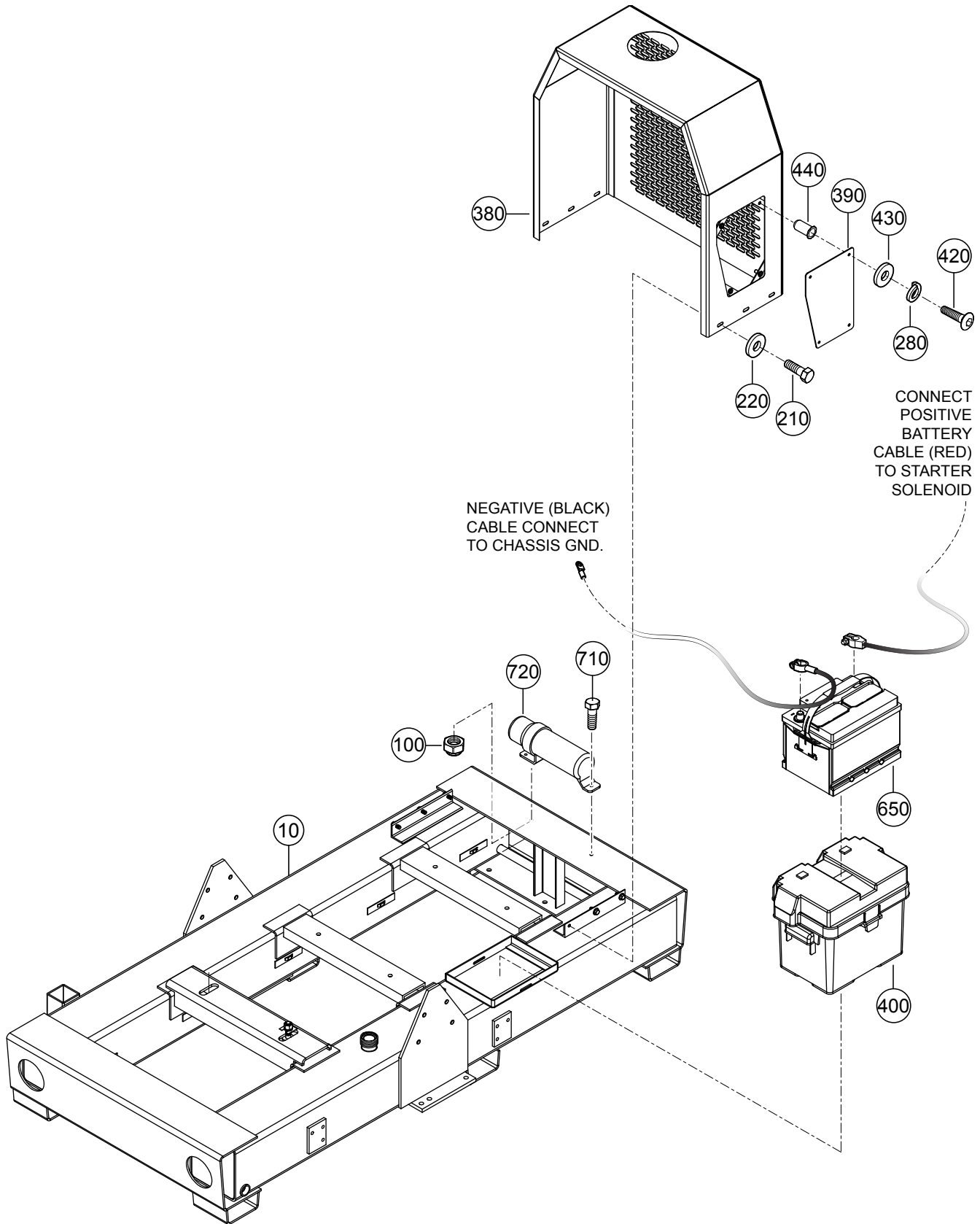




## ENGINE MOUNTING ASSY.

<u>NO.</u>	<u>PART NO.</u>	<u>PART NAME</u>	<u>QTY.</u>	<u>REMARKS</u>
30	505988	PLUG, 5/8" ALLEN HEAD	2	
70	34507	FUEL CAP, W/GAUGE	1	
110	514560	ADAPTER	2	
140	521604	ENGINE, HATZ 74.5 HP T4F	1	
200	804627	VALVE, CHECK FUEL	1	
230	EM969013	NUT 3/8"NC, G8 .....	6.....	REPLACES P/N 492583
250	EM963102	BOLT, 1/2" NCX1-1/4" G-5.....	2.....	REPLACES P/N 492393
260	6109170	WASHER, FLAT 1/2" DIA.....	2.....	REPLACES P/N 492600
310	801696	DAMPER FOR FUEL PUMP	3	
320	EM492299	SCREW, HHC 5/16"-18X1/2" .....	3.....	REPLACES P/N 505401
327	804634	FUEL PUMP BRACKET	1	
360	517328	CLAMP, HS-24	2	
410	EM963610	BOLT 3/8"NCX1-1/4" G5.....	2.....	REPLACES P/N 492376
450	492410	BOLT 5/8" NC X 2-1/2" G5	2	
460	EM507599	WASHER, FLAT 5/8"	2	
470	511838	SHIM BASE .05MM	2	
480	EM923348	WASHER, LOCK 5/8" .....	2.....	REPLACES P/N 492627
490	EM968013	NUT 5/8" DIA.....	2.....	REPLACES P/N 492557
500	492395	BOLT 1/2"NCX1-3/4" G5	4	
510	6109170	WASHER, FLAT 1/2".....	8.....	REPLACES P/N 504322
560	37822	CLAMP, 5/16"	12	
570	42459	HOSE, RUBBER FUEL, 5/16", 4.6 FT. ....	5.....	1 PC = 1 FT.
600	42459	HOSE, RUBBER FUEL, 5/16", 2.5 FT. ....	3.....	1 PC = 1 FT.
610	42459	HOSE, RUBBER FUEL, 5/16", 1.2 FT. ....	2.....	1 PC = 1 FT.
620	42459	HOSE, RUBBER FUEL, 5/16", 1.85 FT. ....	2.....	1 PC = 1 FT.
630	42459	HOSE, RUBBER FUEL, 5/16", 0.75 FT. ....	1.....	1 PC = 1 FT.
640	42459	HOSE, RUBBER FUEL, 5/16", 1.3 FT. ....	2.....	1 PC = 1 FT.
660	492584	NUT, LOCK 1/2" DIA. NC	2	
670	2105164	NUT, NYLON 5/16"-18 .....	3.....	REPLACES P/N 492582
700	EM923023	WASHER, FLAT 5/16".....	6.....	REPLACES P/N 492597
760	804798	COUPLER, ENGINE TO PUMP	1	
770	506622	WASHER M10, PRESSURE SS	6	
780	54812	BOLT, 10X25MM .....	6.....	REPLACES P/N EM162
790	804799	ADAPTER	2	

# BATTERY/ENGINE COVER ASSY.

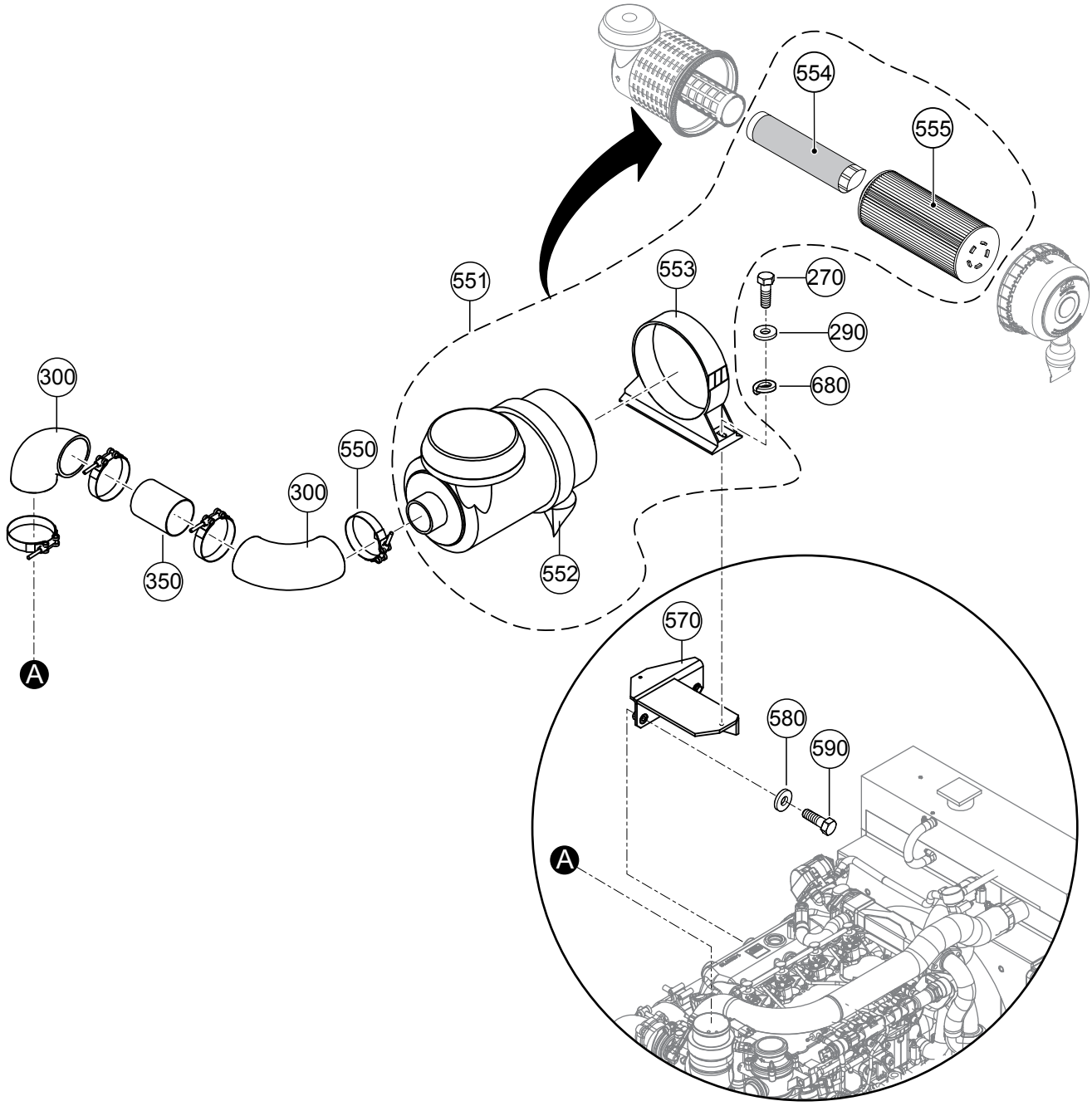


## BATTERY/ENGINE COVER ASSY.

---

<u>NO.</u>	<u>PART NO.</u>	<u>PART NAME</u>	<u>QTY.</u>	<u>REMARKS</u>
10	804652	FRAME	1	
100	2105164	NUT, NYLON 5/16"-18 .....	2.....	REPLACES P/N 492582
210	EM963610	CAP SCREW .....	6.....	REPLACES P/N 492375
220	EM923023	WASHER, FLAT 5/16".....	6.....	REPLACES P/N 492597
280	2101402	WASHER, LOCK 1/4" DIA. ....	4.....	REPLACES P/N 492622
380	804702	ENGINE COVER	1	
390	804703	ENGINE ACCESS COVER	1	
400	10318	BATTERY BOX, GROUP 24	1	
420	DULT100443	BOLT, M6X20 G2	4	
430	DULT100531	WASHER, FLAT M6	4	
440	DULT100602	RIVET, NUT M6	4	
650	520520	BATTERY, GROUP 24	1	
710	492363	BOLT, 5/16" DIA. NCX3/4" G5	2	
720	23297	MANUAL HOLDER	1	

# AIR FILTER ASSY.

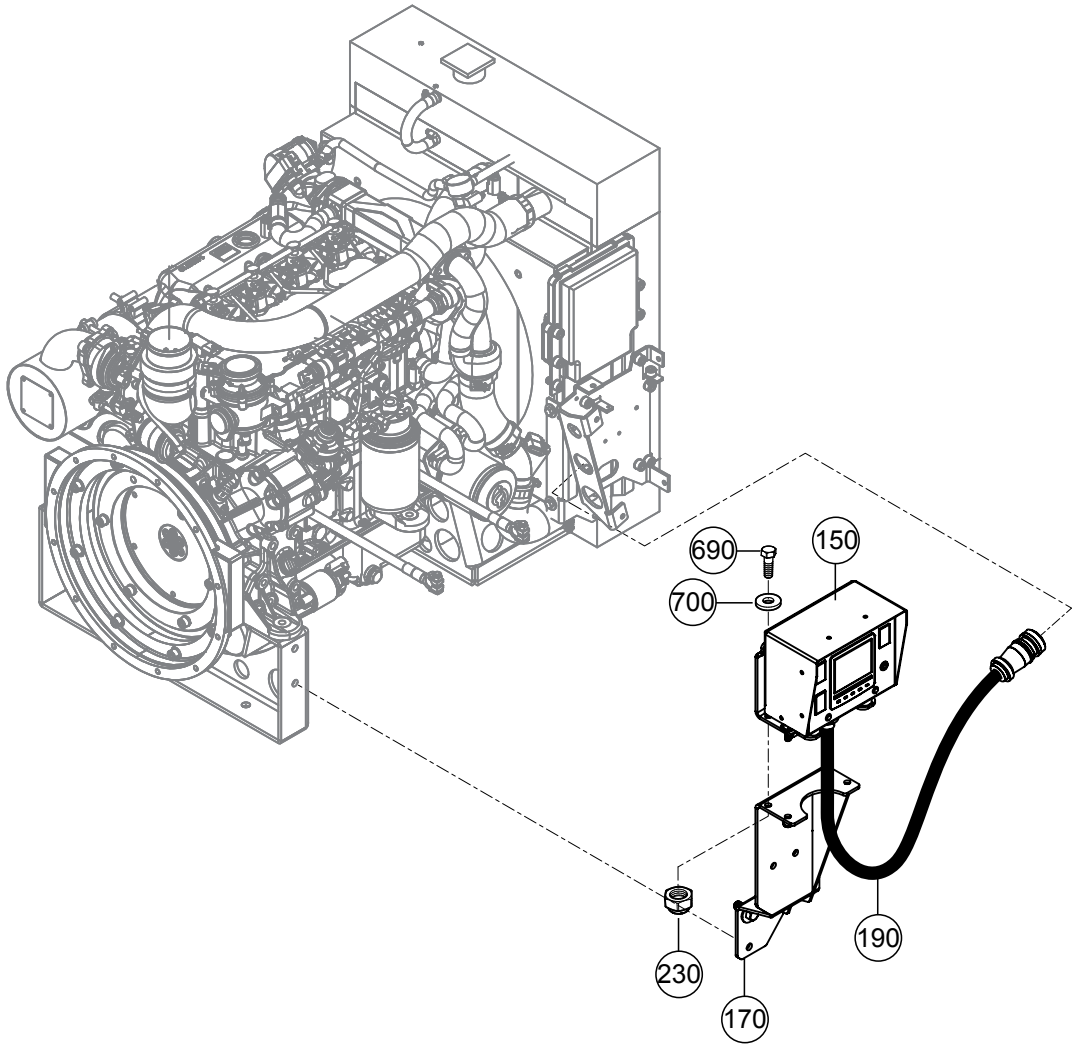


# AIR FILTER ASSY.

---

<u>NO.</u>	<u>PART NO.</u>	<u>PART NAME</u>	<u>QTY.</u>	<u>REMARKS</u>
270	EM492358	BOLT 1/4" NC X 1-1/4".....	2.....	REPLACES P/N 492358
290	492595	WASHER, FLAT 3/16"	2	
300	521639	ELBOW, RUBBER	2	
350	804673	ELBOW, INNER TUBE	1	
550	521638	CLAMP	4	
551	02366900	AIR FILTER ASSY.....	1.....	INCLUDES ITEMS W/#
552#	50660500	RUBBER DUST EVACUATOR	1	
553#	50637400	METAL RELEASE STRAP	1	
554#	50638300	AIR FILTER, SECONDARY	1	
555#	50638200	AIR FILTER, PRIMARY	1	
570	804624	BRACKET AIR FILTER	1	
580	DULT100494	WASHER, FLAT M8	2	
590	DULT100270	BOLT, M8X45	2	
680	2101402	WASHER, LOCK 1/4" DIA. ....	2.....	REPLACES P/N 492622

**CONTROL BOX ASSY.**



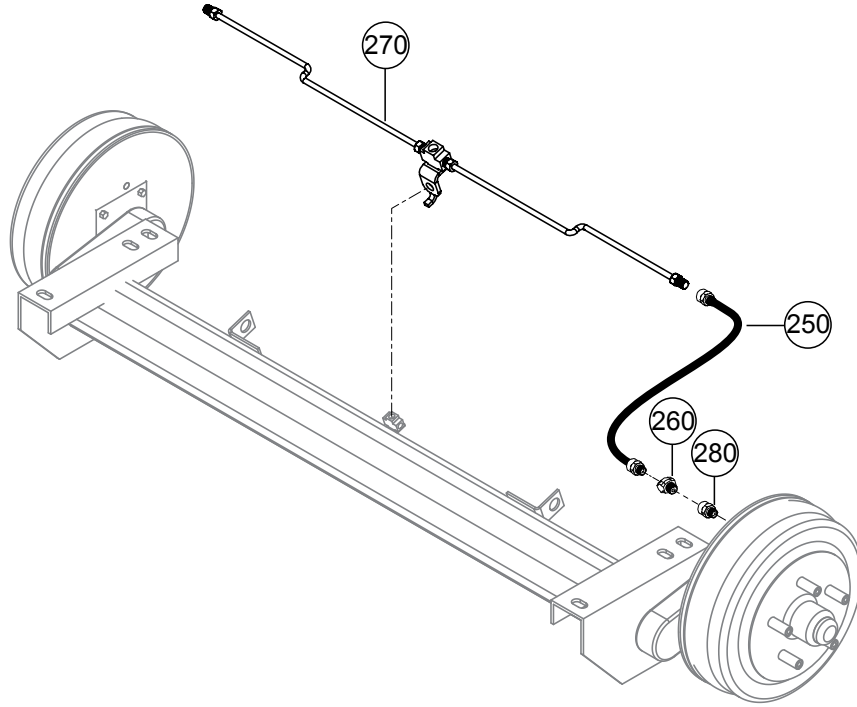
**CONTROL BOX ASSY.**

---

<u>NO.</u>	<u>PART NO.</u>	<u>PART NAME</u>	<u>QTY.</u>	<u>REMARKS</u>
150	521605	CONTROL PANEL ASSEMBLY .....	1.....	SEPT. 2024 AND BELOW NO LONGER AVAILABLE
150	522521	CONTROL PANEL ASSEMBLY .....	1.....	OCT 2024 AND ABOVE
170	804625	CONTROL PANEL SUPPORT BRACKET	1	
190	521606	CONTROL PANEL POWER CABLE	1	
230	EM969013	NUT 3/8" NC, G8 .....	6.....	REPLACES P/N 492583
690	EM963610	CAP SCREW 3/8" NC X 1" G5 .....	4.....	REPLACES P/N 492375
700	EM923023	WASHER, FLAT 5/16" .....	6.....	REPLACES P/N 492597

# HYDRAULIC BRAKE LINE ASSY.

---





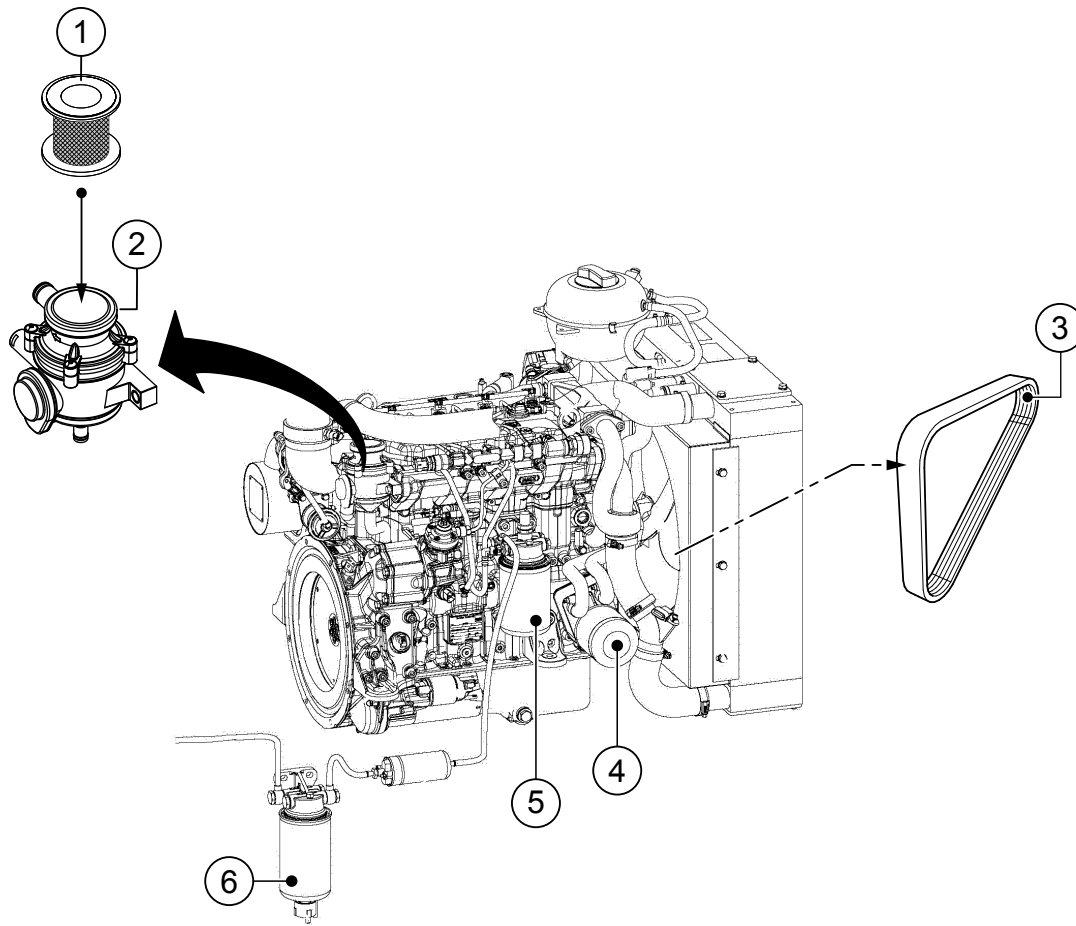
## HYDRAULIC BRAKE LINE ASSY.

---

<u>NO.</u>	<u>PART NO.</u>	<u>PART NAME</u>	<u>QTY.</u>	<u>REMARKS</u>
250	34565	KIT, HYDRAULIC LINE	1	
260	EM512876	ADAPTER	2	
270	34566	KIT, TORSION LINE	1	
280	EM512877	ADAPTER	2	

# HATZ 4H50TIC ENGINE SERVICE PARTS

---



## HATZ 4H50TIC ENGINE SERVICE PARTS

---

<u>NO.</u>	<u>PART NO.</u>	<u>PART NAME</u>	<u>QTY.</u>	<u>REMARKS</u>
1	50640500	FILTER, BREATHER, CRANKCASE	1	
2	60640500	OIL SEPARATOR	1	
3	50629401	POLY V BELT 768	1	
4	50628800	OIL FILTER	1	
5	60638100	FUEL FILTER	1	
6	50638000	PRE FUEL FILTER/WATER SEPARATOR	1	

# PARTS MANUAL

## HERE'S HOW TO GET HELP

PLEASE HAVE THE MODEL AND SERIAL  
NUMBER ON-HAND WHEN CALLING

### UNITED STATES

#### *Multiquip Inc.*

(310) 537- 3700  
6141 Katella Avenue Suite 200  
Cypress, CA 90630  
E-MAIL: [mq@multiquip.com](mailto:mq@multiquip.com)  
WEBSITE: [www.multiquip.com](http://www.multiquip.com)

---

### CANADA

#### *Multiquip*

(450) 625-2244  
4110 Industriel Boul.  
Laval, Quebec, Canada H7L 6V3  
E-MAIL: [infocanada@multiquip.com](mailto:infocanada@multiquip.com)

### UNITED KINGDOM

#### *Multiquip (UK) Limited Head Office*

0161 339 2223  
Unit 2, Northpoint Industrial Estate, Globe Lane,  
Dukinfield, Cheshire SK16 4UJ  
E-MAIL: [sales@multiquip.co.uk](mailto:sales@multiquip.co.uk)

© COPYRIGHT 2024, MULTIQUIP INC.

Multiquip Inc, the MQ logo are registered trademarks of Multiquip Inc. and may not be used, reproduced, or altered without written permission. All other trademarks are the property of their respective owners and used with permission.

This manual MUST accompany the equipment at all times. This manual is considered a permanent part of the equipment and should remain with the unit if resold.

The information and specifications included in this publication were in effect at the time of approval for printing. Illustrations, descriptions, references and technical data contained in this manual are for guidance only and may not be considered as binding. Multiquip Inc. reserves the right to discontinue or change specifications, design or the information published in this publication at any time without notice and without incurring any obligations.

