

PARTS MANUAL



MODEL MQ62TDD TRASH PUMP (DEUTZ F2L2011/D2011LO2 DIESEL ENGINES)

Revision #1 (07/08/20)

To find the latest revision of this publication or associated operation manual, visit our website at: www.multiquip.com



THIS MANUAL MUST ACCOMPANY THE EQUIPMENT AT ALL TIMES.

TABLE OF CONTENTS

MQ62TDD TRASH PUMP

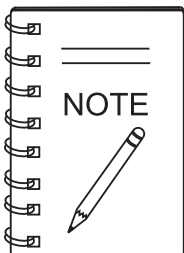
| | |
|---|---|
| Table of Contents | 2 |
| Explanation of Code in Remarks Column | 4 |
| Suggested Spare Parts | 5 |

Component Drawings

| | |
|---|-------|
| Nameplate and Decals | 6-7 |
| Trash Pump Assembly | 8-11 |
| Trailer TRLRMPXF Assembly | 12-13 |
| Trailer TRLR50XF Assembly | 14-15 |
| Skid Assembly | 16-77 |
| Axle Assembly | 18-19 |
| Lifting Bail Assembly (TRLRMPXF) | 20-21 |
| Lifting Bail Assembly (TRLR50XF) | 22-23 |
| Lifting Bail Assembly (Skid) | 24-25 |
| Fuel Assembly (TRLRMPXF) | 26-27 |
| Fuel Assembly (TRLR50XF) | 28-29 |
| Fuel Assembly (Skid) | 30-31 |
| Battery Assembly (TRLRMPXF) | 32-33 |
| Battery Assembly (TRLR50XF) | 34-35 |
| Battery Assembly (Skid) | 36-37 |
| Engine Mounting Assembly (TRLRMPXF) | 38-39 |
| Engine Mounting Assembly (TRLR50XF) | 40-41 |
| Engine Mounting Assembly (Skid) | 42-33 |

Deutz F2L2011/D2011L02 Diesel Engine

| | |
|--|-------|
| Engine Assembly | 44-45 |
| Oil Pressure Switch Assembly | 46-47 |
| Temperature Transmitter Assembly | 48-49 |
| Starter Assembly | 50-51 |
| Control Box Assembly (Old Style) | 52-53 |
| Control Box Assembly (New Style) | 54-55 |
| Air Filter Assembly | 56-57 |
| Narrow V-Belt Assembly | 58-59 |
| Lubricated Oil Filter Assembly | 60-61 |
| Fuel Filter Assembly | 62-63 |



*Specification and part number are
subject to change without notice.*

EXPLANATION OF CODE IN REMARKS COLUMN

The following section explains the different symbols and remarks used in the Parts section of this manual. Use the help numbers found on the back page of the manual if there are any questions.

NOTICE

The contents and part numbers listed in the parts section are subject to change **without notice**. Multiquip does not guarantee the availability of the parts listed.

SAMPLE PARTS LIST

| NO. | PART NO. | PART NAME | QTY. | REMARKS |
|-----|----------|---------------------|------|---------------------|
| 1 | 12345 | BOLT..... | 1 | INCLUDES ITEMS W/% |
| 2% | | WASHER, 1/4 IN..... | | NOT SOLD SEPARATELY |
| 2% | 12347 | WASHER, 3/8 IN.... | 1 | MQ-45T ONLY |
| 3 | 12348 | HOSE | A/R | MAKE LOCALLY |
| 4 | 12349 | BEARING | 1 | S/N 2345B AND ABOVE |

NO. Column

Unique Symbols — All items with same unique symbol

(@, #, +, %, or >) in the number column belong to the same assembly or kit, which is indicated by a note in the “Remarks” column.

Duplicate Item Numbers — Duplicate numbers indicate multiple part numbers, which are in effect for the same general item, such as different size saw blade guards in use or a part that has been updated on newer versions of the same machine.

NOTICE

When ordering a part that has more than one item number listed, check the remarks column for help in determining the proper part to order.

PART NO. Column

Numbers Used — Part numbers can be indicated by a number, a blank entry, or TBD.

TBD (To Be Determined) is generally used to show a part that has not been assigned a formal part number at the time of publication.

A blank entry generally indicates that the item is not sold separately or is not sold by Multiquip. Other entries will be clarified in the “Remarks” Column.

QTY. Column

Numbers Used — Item quantity can be indicated by a number, a blank entry, or A/R.

A/R (As Required) is generally used for hoses or other parts that are sold in bulk and cut to length.

A blank entry generally indicates that the item is not sold separately. Other entries will be clarified in the “Remarks” Column.

REMARKS Column

Some of the most common notes found in the “Remarks” Column are listed below. Other additional notes needed to describe the item can also be shown.

Assembly/Kit — All items on the parts list with the same unique symbol will be included when this item is purchased.

Indicated by:

“INCLUDES ITEMS W/(unique symbol)”

Serial Number Break — Used to list an effective serial number range where a particular part is used.

Indicated by:

“S/N XXXXX AND BELOW”

“S/N XXXX AND ABOVE”

“S/N XXXX TO S/N XXX”

Specific Model Number Use — Indicates that the part is used only with the specific model number or model number variant listed. It can also be used to show a part is NOT used on a specific model or model number variant.

Indicated by:

“XXXXX ONLY”

“NOT USED ON XXXX”

“Make/Obtain Locally” — Indicates that the part can be purchased at any hardware shop or made out of available items. Examples include battery cables, shims, and certain washers and nuts.

“Not Sold Separately” — Indicates that an item cannot be purchased as a separate item and is either part of an assembly/kit that can be purchased, or is not available for sale through Multiquip.

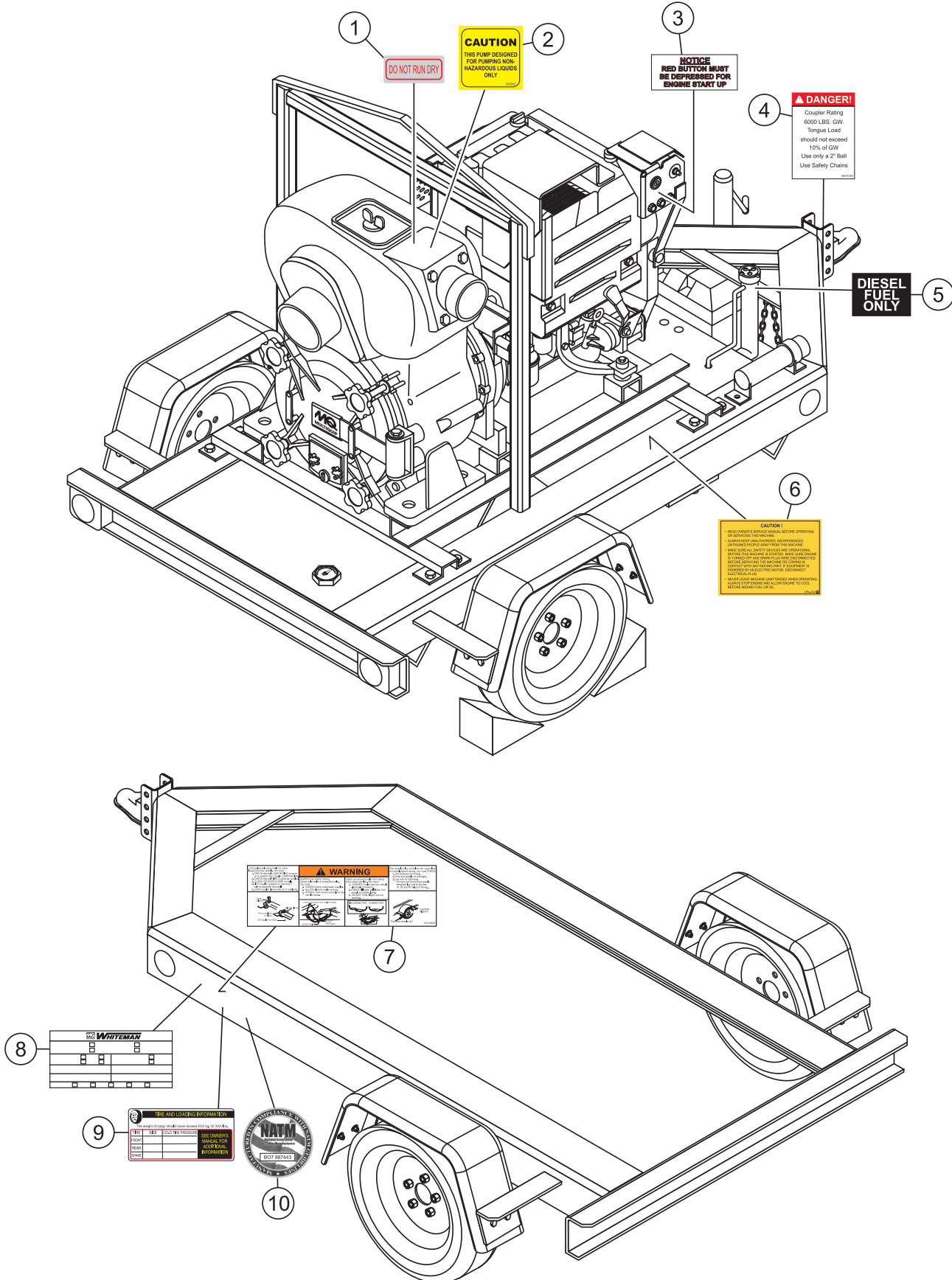
SUGGESTED SPARE PARTS

MQ62TDD TRASH PUMP WITH DEUTZ F2L2011/ D2011L02 DIESEL ENGINE

1 to 3 units

| <u>QTY.</u> | <u>P/N</u> | <u>DESCRIPTION</u> |
|-------------|------------|-------------------------|
| 3 | 0801334545 | MECHANICAL SEAL |
| 3 | 0811384576 | SLEEVE, SEAL (SHAFT) |
| 3 | 0483604300 | O-RING, FRONT COVER |
| 1 | 2602000032 | IMPELLER |
| 1 | 4607000700 | WEAR PLATE |
| 1 | 1601350350 | CHECK VALVE |
| 1 | 0862456209 | OIL SEAL |
| 1 | 0670026209 | BEARING |
| 1 | 4607221012 | SHAFT |
| 1 | 0480350380 | O-RING, MECHANICAL SEAL |
| | | SLEEVE |
| 1 | KITMQ62 | KIT, SEALS AND O-RINGS |
| 3 | 01174416 | FILTER, OIL |
| 3 | 01174696 | FILTER, FUEL |
| 3 | 01179565 | V-BELT |
| 1 | 01182529 | IGNITION KEY |

NAMEPLATE AND DECALS



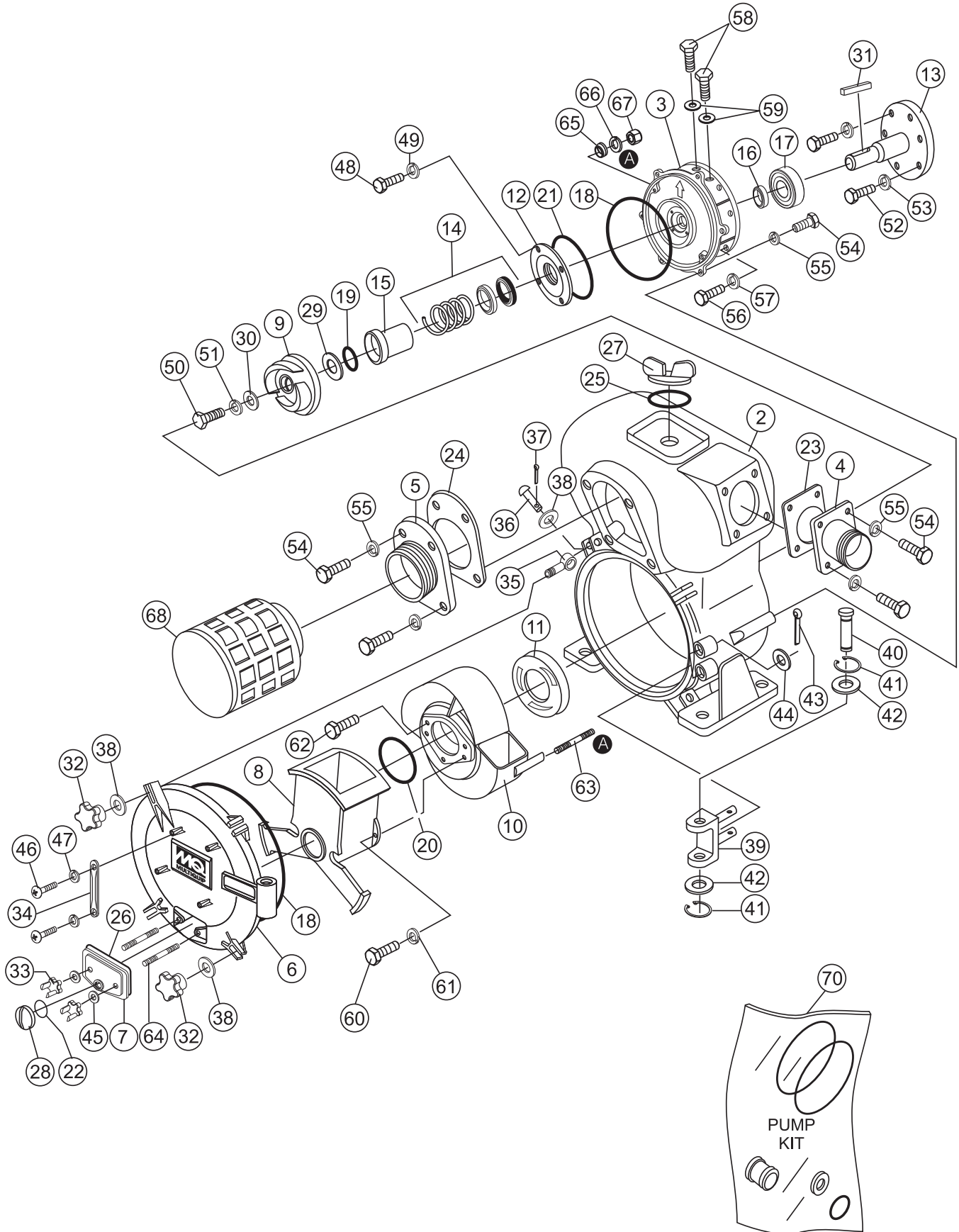
NAMEPLATE AND DECALS

| <u>NO.</u> | <u>PART NO.</u> | <u>PART NAME</u> | <u>QTY.</u> | <u>REMARKS</u> |
|------------|-----------------|-------------------------------------|-------------|-------------------------|
| 1 | 7005000 | DECAL, DO NOT RUN PUMP DRY | 1 | |
| 2 | DCS02 | DECAL, PUMP SAFETY | 1 | |
| 3 | | DECAL, CONTROL BOX | 1 | INCLUDED W/ CONTROL BOX |
| 4 | BH21008 | DECAL, SAFETY CHAINS | 1 | |
| 5 | M9500500004 | DECAL, DIESEL FUEL ONLY | 1 | |
| 6 | NPA-320J | DECAL, CAUTION | 1 | |
| 7 | 49002 | DECAL, TRLR HITCH/WHEEL WARNING | 1 | |
| 8 | 29680 | DECAL, MULTIPLE TRAILER VIN | 1 | |
| 9 | 17322 | DECAL, TIRE AND LOADING INFO | 1 | |
| 10 | 29729 | DECAL, NATM MANUFACTURER COMPLIANCE | 1 | |

TRASH PUMP ASSY.

| <u>NO.</u> | <u>PART NO.</u> | <u>PART NAME</u> | <u>QTY.</u> | <u>REMARKS</u> |
|------------|-----------------|------------------------------------|-------------|---------------------|
| 2 | 2601000010 | CASING | 1 | |
| 3 | 26200000240002 | CASING COVER | 1 | REPLACES 2620000022 |
| 4 | 46070000900002 | DISCHARGE FLANGE | 1 | REPLACES 4607000090 |
| 5 | 1603000090 | SUCTION FLANGE | 1 | |
| 6 | 2601000170 | CLEANOUT COVER | 1 | |
| 7 | 4609000170 | DRAIN COVER | 1 | |
| 8 | 2601000800 | SUCTION CASE | 1 | |
| 9 | 2602000032 | IMPELLER | 1 | |
| 10 | 2620000130 | VOLUTE CASING | 1 | |
| 11 | 4607000700 | WEAR PLATE | 1 | |
| 12 | 4607000750 | MECHANICAL SEAL HOUSING | 1 | |
| 13 | 4607221012 | SHAFT, D-F2L511W | 1 | |
| 14% | 0801334545 | MECHANICAL SEAL | 1 | |
| 15% | 0811384576 | MECHANICAL SEAL SLEEVE | 1 | |
| 16% | 0862456209 | OIL SEAL | 1 | |
| 17 | 0670026209 | BALL BEARING | 1 | |
| 18% | 0483604300 | O-RING (CASING DRAIN COVER) | 2 | |
| 19% | 0480350380 | O-RING (MECHANICAL SEAL SLEEVE) | 1 | |
| 20% | 0480571400 | O-RING (VOLUTE CASING) | 1 | |
| 21% | 0482201000 | O-RING (MECHANICAL SEAL HOUSING) | 1 | |
| 22 | 0480350300 | O-RING (DRAIN CAP) | 1 | |
| 23 | 1601330360 | DISCHARGE FLANGE PACKING | 1 | |
| 24 | 1601350350 | CHECK VALVE | 1 | |
| 25 | 0741320503 | FILL CAP PACKING | 1 | |
| 26 | 1601330380 | DRAIN COVER B PACKING | 1 | |
| 27 | 06312112020014 | FILL CAP | 1 | REPLACES 0631211202 |
| 28 | 0631211100ASSY | DRAIN CAP | 1 | REPLACES 0631211100 |
| 29 | 0852856439 | ADJUST LINER, SHIM | 1-3 | |
| 30 | 46072012400011 | IMPELLER WASHER | 1 | REPLACES 4607201240 |
| 31 | 0511081054 | KEY | 1 | |
| 32 | 26010001900002 | CLEANOUT COVER SET | 4 | REPLACES 2601000190 |
| 33 | 26010002200002 | HANDLE DRAIN KNOB | 2 | REPLACES 2601000220 |
| 34 | 12471002500002 | CLEANOUT COVER HANDLE | 2 | REPLACES 1247100250 |
| 35 | 2601200270 | HINGE BOLT | 4 | |
| 36 | 2601200280 | HINGE PIN | 4 | |
| 37 | 0641400430 | SPLIT PIN | 4 | REPLACES 0642300425 |
| 38 | 0401450160 | WASHER | 8 | |
| 39 | 2601200260 | DRAIN COVER SET HINGE | 1 | |
| 40 | 2601200300 | HINGE SET PIN | 1 | |
| 41 | 0462721915 | E-RING, SNAP | 2 | |
| 42 | 0401450200 | WASHER | 2 | |
| 43 | 0642300528 | SPLIT PIN | 2 | |
| 44 | 0401450160 | WASHER | 2 | |
| 45 | 031112230 | WASHER | 2 | |
| 46 | 0141090825 | SCREW (DRAIN COVER HANDLE) | 4 | |
| 47 | 030208200 | WASHER, LOCK | 4 | |

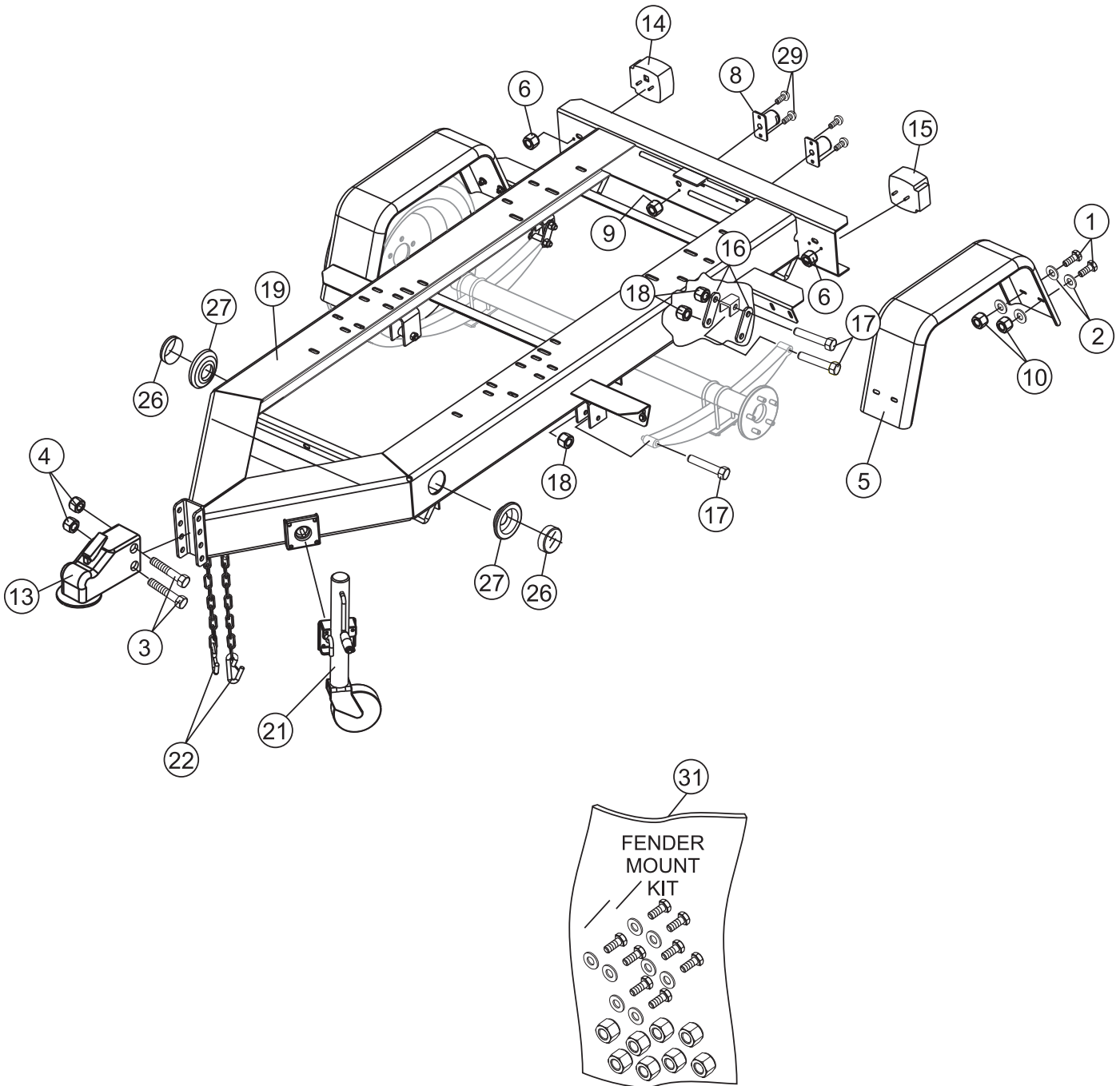
TRASH PUMP ASSY. (CONTINUED)



TRASH PUMP ASSY. (CONTINUED)

| <u>NO.</u> | <u>PART NO.</u> | <u>PART NAME</u> | <u>QTY.</u> | <u>REMARKS</u> |
|------------|-----------------|---------------------------------|-------------|---------------------|
| 48 | 0105090815 | BOLT (MECHANICAL SEAL HOUSING) | 4 | |
| 49 | 0451290080 | WASHER, LOCK | 4 | |
| 50 | 0105091225 | BOLT, IMPELLER | 1 | |
| 51 | 0451250120 | WASHER, LOCK | 1 | |
| 52 | 011008040 | BOLT, SHAFT | 6 | |
| 53 | 030208200 | WASHER, LOCK | 1 | |
| 54 | 0105051645 | BOLT, CASING | 14 | |
| 55 | 030216400 | WASHER, LOCK | 14 | |
| 56 | 012010030 | BOLT, CASING COVER | 6 | |
| 57 | 030210250 | WASHER, LOCK | 6 | |
| 58 | 0105052030 | BOLT (OIL CAP) | 3 | |
| 59 | 4607287110 | OIL CAP WASHER | 3 | |
| 60 | 012010030 | BOLT (SUCTION CASE) | 2 | |
| 61 | 030212300 | WASHER, LOCK | 2 | |
| 62 | 014210020 | CAP SCREW (WEAR PLATE) | 3 | REPLACES 0131191020 |
| 63 | 0151161035 | STUDIO BOLT (VOLUTE CASING) | 2 | |
| 64 | 0151151240 | STUD BOLT (DRAIN COVER B) | 2 | |
| 65 | 0458220100 | SEAL WASHER | 2 | |
| 66 | 030210250 | WASHER, LOCK | 2 | |
| 67 | 0204450100 | NUT VOLUTE CASING | 2 | |
| 68 | 0742062150 | STRAINER | 1 | |
| 70 | KITMQ62 | KIT, SEAL AND O-RINGS | 1 | INCLUDES ITEMS W/% |

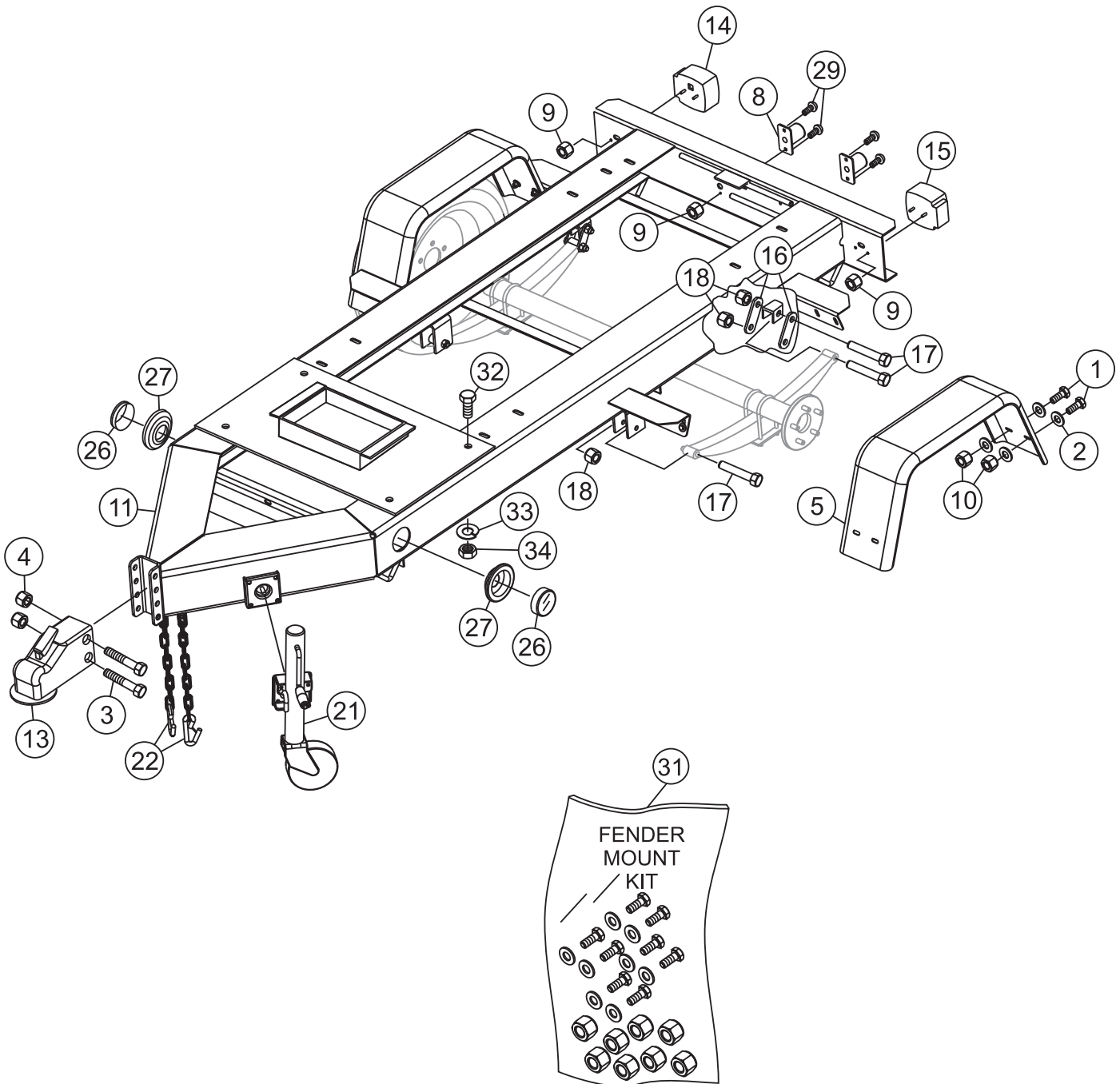
TRAILER TRLRMPXF ASSY.



TRAILER TRLRMPXF ASSY.

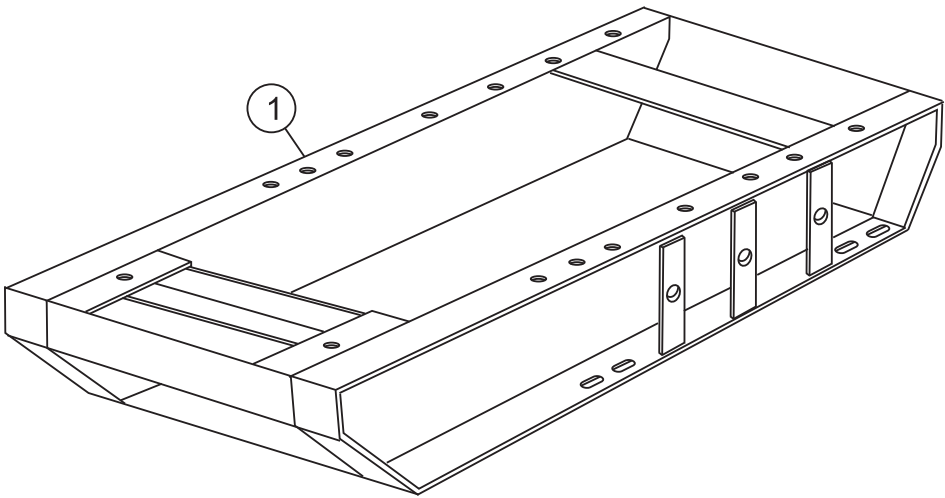
| <u>NO.</u> | <u>PART NO.</u> | <u>PART NAME</u> | <u>QTY.</u> | <u>REMARKS</u> |
|------------|-----------------|--|-------------|---------------------|
| 1 | 0205 | SCREW, HHC 3/8 - 16 x 1 | 8 | |
| 2 | 4001 | WASHER, FLAT USS 3/8 PLD | 16 | |
| 3 | 9502 | SCREW, HHC 5/8 - 11 x 4-1/2 GR8 | 2 | |
| 4 | 9503 | NUT, NYLOC 5/8 - 11 | 2 | |
| 5 | 9505 | FENDER, 8 x 30 x 13 | 2 | |
| 6\$% | 10019 | NUT, NYLOC 10-32 | 4 | |
| 8 | 9514 | LIGHT ASM., LICENSE PLATE | 2 | |
| 9 | 10019 | NUT, NYLOC 10-32 | 4 | |
| 10 | 10133 | NUT, NYLOC 3/8 - 16 | 8 | |
| 13 | 29228 | COUPLER, 2" BALL 600# GVWR | 1 | |
| 14 | 29242 | LIGHT, TAIL RT (CURB) SIDE M440 | 1 | INCLUDES ITEMS W/\$ |
| 15 | 29243 | LIGHT, TAIL LT (ROAD) SIDE M440L | 1 | INCLUDES ITEMS W/% |
| 16 | 29247 | SHACKLE, AXLE MOUNTING | 4 | |
| 17 | 29248 | SCREW, HHC 9/16 - 18 | 6 | |
| 18 | 29249 | NUT, 9/16-18 AXLE MOUNTING, N-2 | 6 | |
| 19 | 29370 | FRAME, W/A TRLRMP | 1 | |
| 21 | 29496 | JACK, SIDEWIND 10", BOLT THRU, .5 PIN W/ WHEEL | 1 | |
| 22 | 29572 | CHAIN ASM., SAFETY 7600 LB | 2 | |
| 26 | 29898 | LIGHT, 2 - 1/2 SIDE MARKER, AMBER, 143A | 2 | |
| 27 | 29900 | GROMMET W/ WIRE KIT, 2 - 1/2", 14248K | 2 | |
| 29 | 5065 B | SCREW, PHP 10 - 32 x 1/2 | 4 | |
| 31 | 29754 | FENDER MOUNT KIT | 1 | |

TRAILER TRLR50XF ASSY.



TRAILER TRLR50XF ASSY.

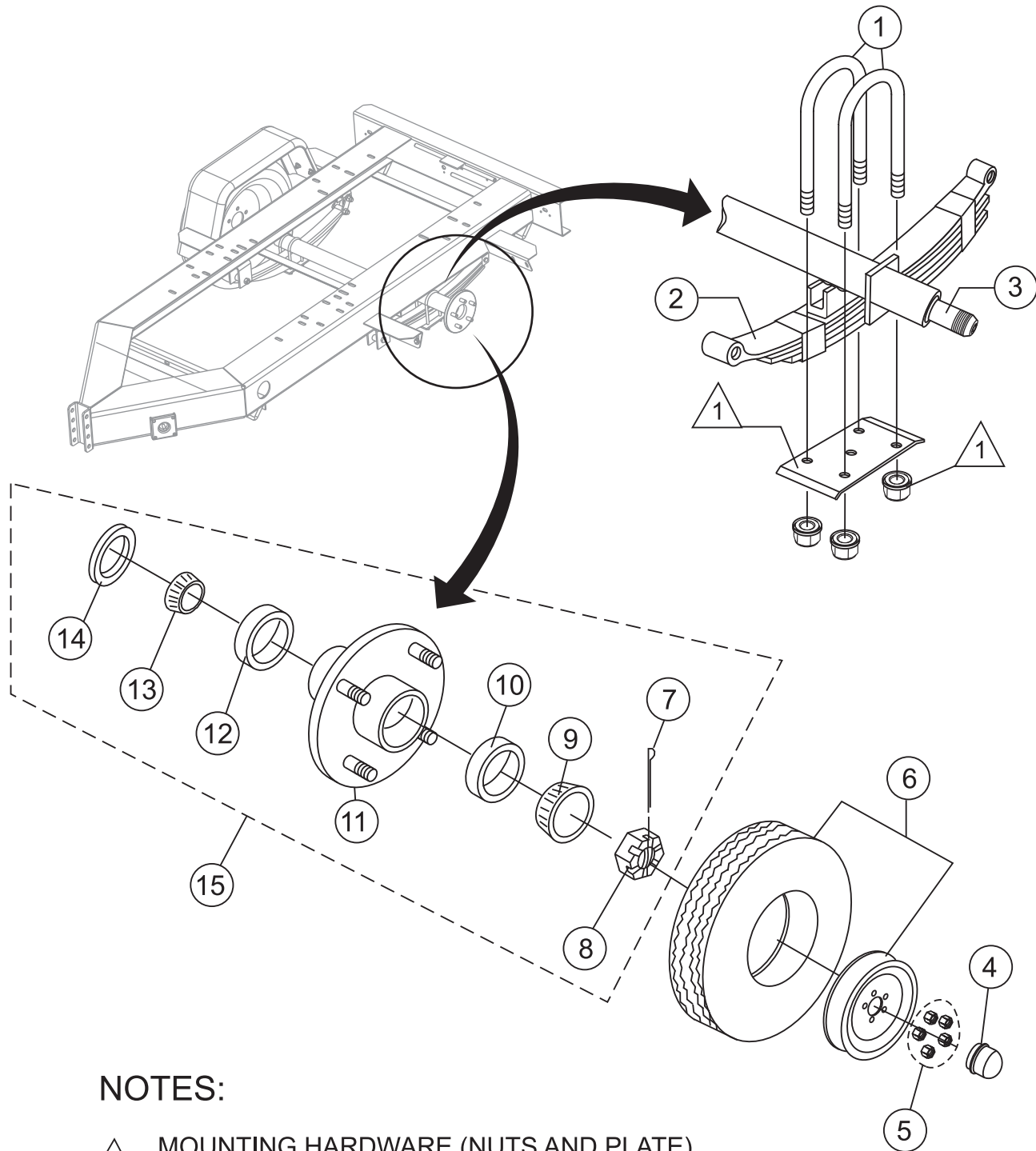
| <u>NO.</u> | <u>PART NO.</u> | <u>PART NAME</u> | <u>QTY.</u> | <u>REMARKS</u> |
|------------|-----------------|--|-------------|----------------|
| 1 | 0205 | SCREW, HHC 3/8 - 16 x 1 | 8 | |
| 2 | 4001 | WASHER, FLAT USS 3/8 PLD | 16 | |
| 3 | 9502 | SCREW, HHC 5/8 - 11 x 4-1/2 GR8 | 2 | |
| 4 | 9503 | NUT, NYLOC 5/8 - 11 | 2 | |
| 5 | 9505 | FENDER, 8 x 30 x 13 | 2 | |
| 8 | 9514 | LIGHT ASM., LICENSE PLATE | 2 | |
| 9 | 10019 | NUT, NYLOC 10-32 | 8 | |
| 10 | 10133 | NUT, NYLOC 3/8 - 16 | 8 | |
| 11 | 19043 | FRAME, W/A TRLR 50W | 1 | |
| 13 | 29228 | COUPLER, 2" BALL 600# GVWR | 1 | |
| 14 | 29242 | LIGHT, TAIL RT (CURB) SIDE M440 | 1 | |
| 15 | 29243 | LIGHT, TAIL LT (ROAD) SIDE M440L | 1 | |
| 16 | 29247 | SHACKLE, AXLE MOUNTING | 4 | |
| 17 | 29248 | SCREW, HHC 9/16 - 18 | 6 | |
| 18 | 29249 | NUT, 9/16-18 AXLE MOUNTING N-2 | 6 | |
| 21 | 29496 | JACK, SIDEWIND 10", BOLT THRU, .5 PIN W/ WHEEL | 1 | |
| 22 | 29572 | CHAIN ASM., SAFETY 7600 LB | 2 | |
| 26 | 29898 | LIGHT, 2 - 1/2 SIDE MARKER, AMBER, 143A | 2 | |
| 27 | 29900 | GROMMET W/ WIRE KIT, 2 - 1/2", 14248K | 2 | |
| 29 | 5065 B | SCREW, PHP 10 - 32 x 1/2 | 4 | |
| 31 | 29754 | FENDER MOUNT KIT | 1 | |
| 32 | 6109210 | BOLT, 1/2 - 13 x 1-1/2 | 4 | |
| 33 | 86109180 | LOCK, 1/2 WASHER | 4 | |
| 34 | 6109160 | 1/2 NUT | 4 | |



SKID ASSY.

| <u>NO.</u> | <u>PART NO.</u> | <u>PART NAME</u> | <u>QTY.</u> | <u>REMARKS</u> |
|------------|-----------------|------------------|-------------|----------------|
| 1 | 19091 | SKID ASSY. | 1 | |

AXLE ASSY.



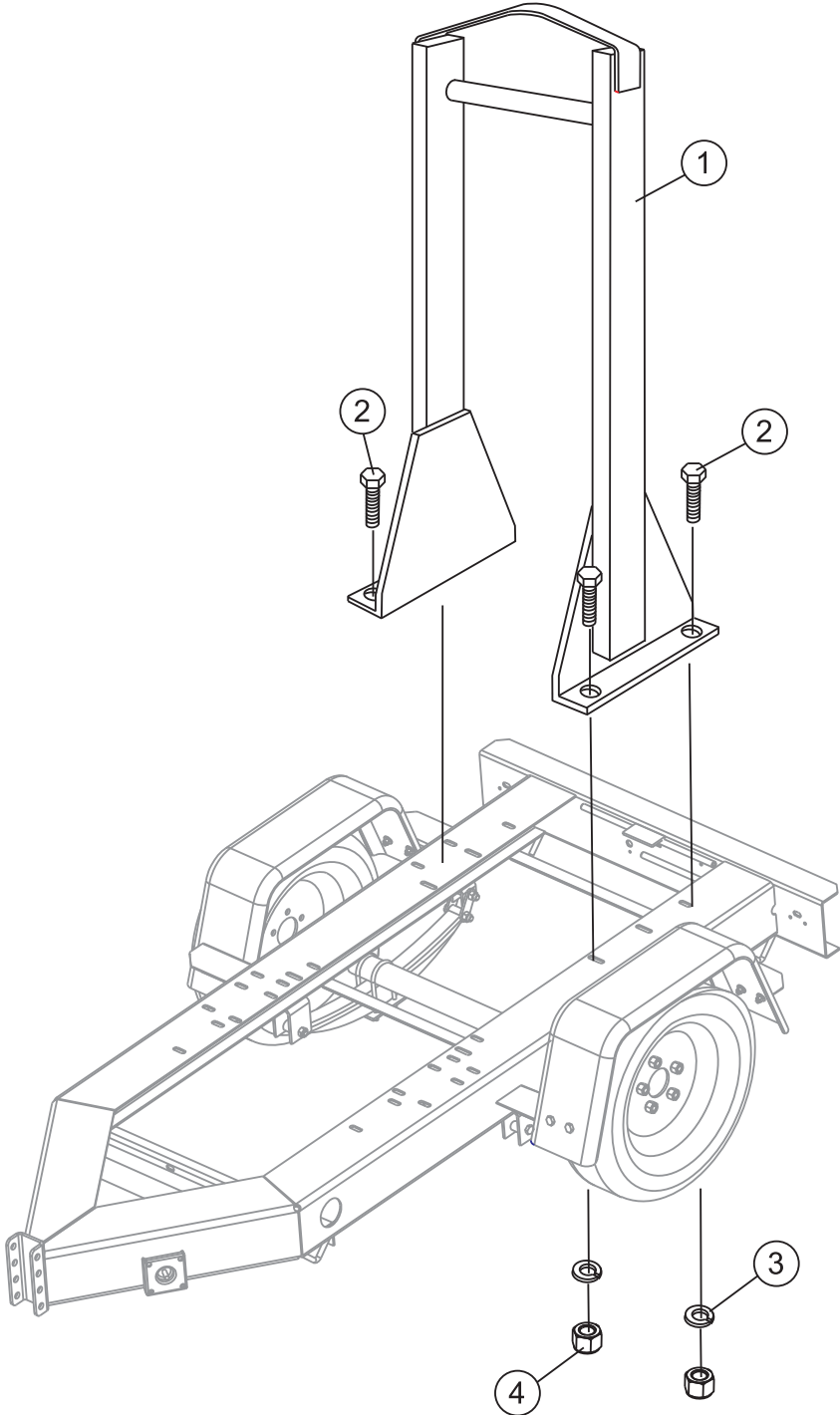
NOTES:

-  MOUNTING HARDWARE (NUTS AND PLATE)
INCLUDED WITH U-BOLTS (ITEM 1).

AXLE ASSY.

| <u>NO.</u> | <u>PART NO.</u> | <u>PART NAME</u> | <u>QTY.</u> | <u>REMARKS</u> |
|------------|-----------------|---------------------------|-------------|--------------------|
| 1 | 29381U | KIT, U-BOLT | 4 | |
| 2 | 29381S | SPRING, 4 LEAF 25.25 | 2 | |
| 3 | 29381B | AXLE BEAM | 1 | |
| 4 | 46749 | DUST CAP | 2 | HENDERSON |
| 5 | 29755 | LUG NUT KIT | 1 | |
| 6 | 19045 | TIRE/RIM | 2 | |
| 7% | 491688 | COTTER PIN | 1 | |
| 8% | 114 | SPINDLE NUT | 1 | HENDERSON |
| 9% | L44649 | OUTER BEARING CONE | 1 | HENDERSON |
| 10% | L44610 | OUTER BEARING CUP | 1 | HENDERSON |
| 11% | 10-215S | IDLER HUB, 5 X 4.5" | 1 | HENDERSON |
| 12% | L68111 | INNER BEARING CUP | 1 | HENDERSON |
| 13% | L68149 | INNER BEARING CONE | 1 | HENDERSON |
| 14% | 58846 | GREASE SEAL | 1 | HENDERSON |
| 15 | 29381H | HUB KIT | 1 | INCLUDES ITEMS W/% |

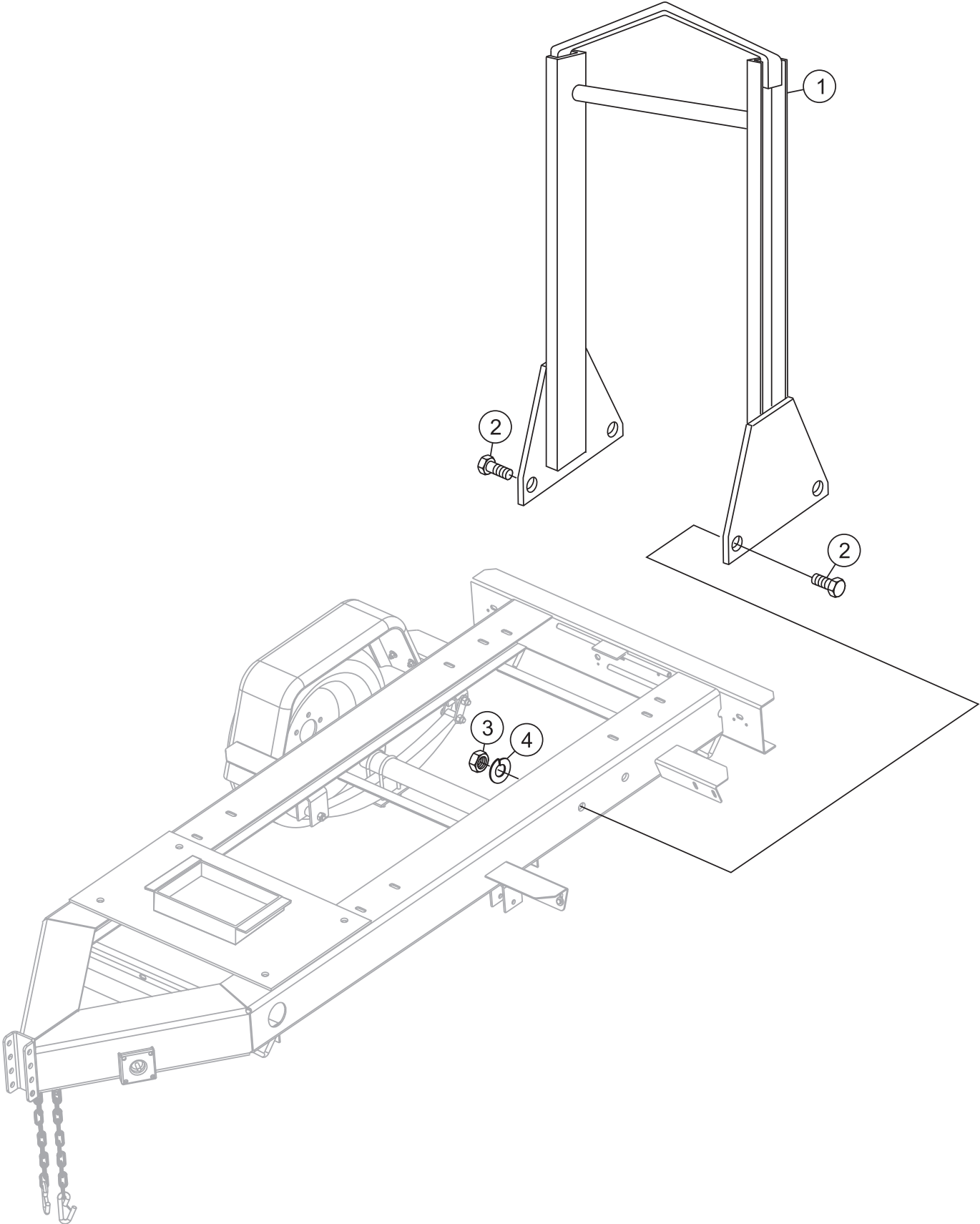
LIFTING BAIL ASSY. (TRLRMPXF)



LIFTING BAIL ASSY. (TRLRMPXF)

| <u>NO.</u> | <u>PART NO.</u> | <u>PART NAME</u> | <u>QTY.</u> | <u>REMARKS</u> |
|------------|-----------------|------------------|-------------|----------------|
| 1 | 19092 | LIFTING BAIL | 1 | |
| 2 | 0105051640 | 16 X 40 BOLT | 4 | |
| 3 | 2103200 | WASHER, LOCK | 4 | |
| 4 | 3019091 | NUT | 4 | |

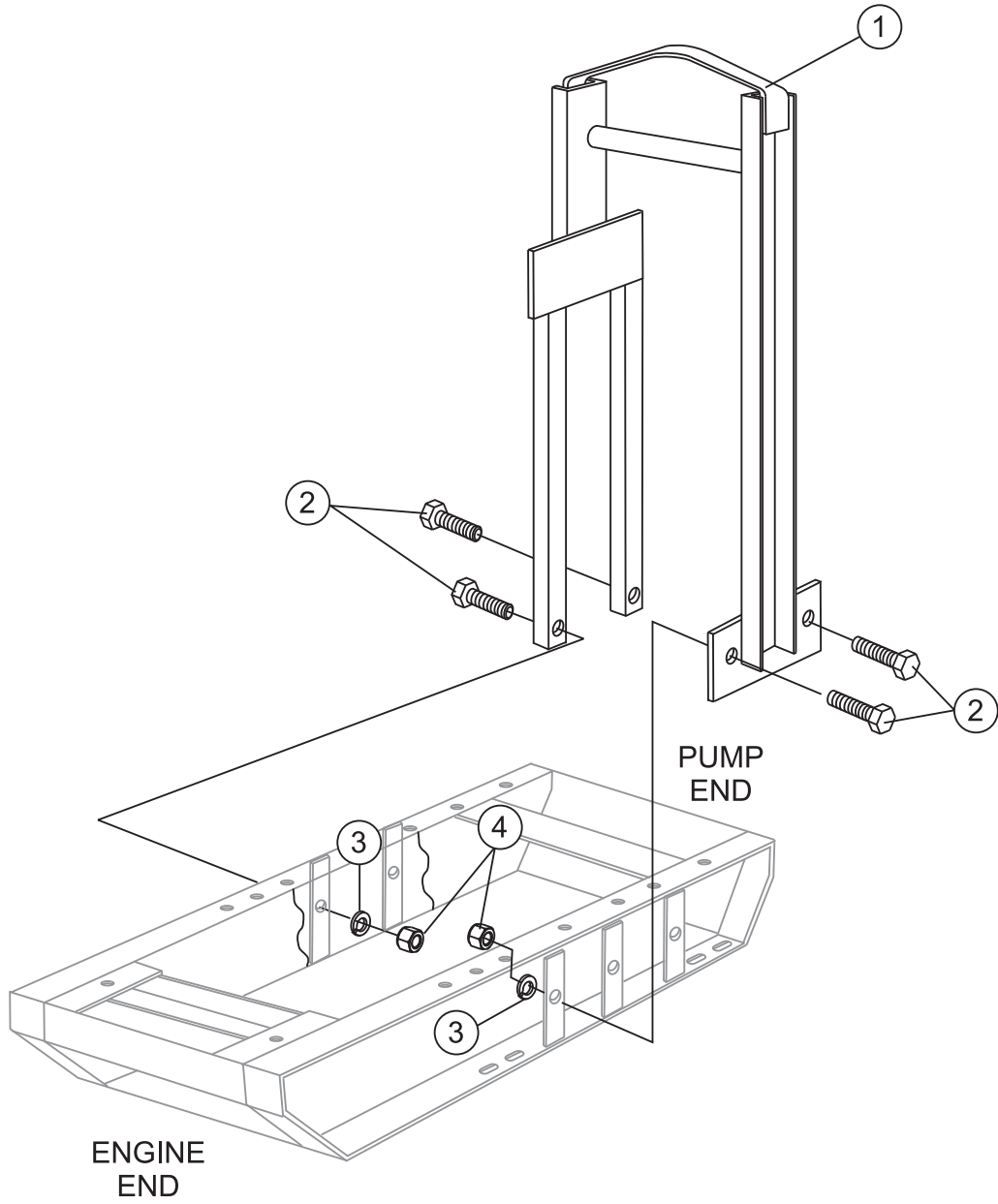
LIFTING BAIL ASSY. (TRLR50XF)



LIFTING BAIL ASSY. (TRLR50XF)

| <u>NO.</u> | <u>PART NO.</u> | <u>PART NAME</u> | <u>QTY.</u> | <u>REMARKS</u> |
|------------|-----------------|-------------------|-------------|----------------|
| 1 | 50XF9102 | LIFTING BAIL | 1 | |
| 2 | 0105051640 | 16 X 40 BOLT | 4 | |
| 3 | 020316130 | NUT M16 | 4 | |
| 4 | 030216400 | 16MM WASHER, LOCK | 4 | |

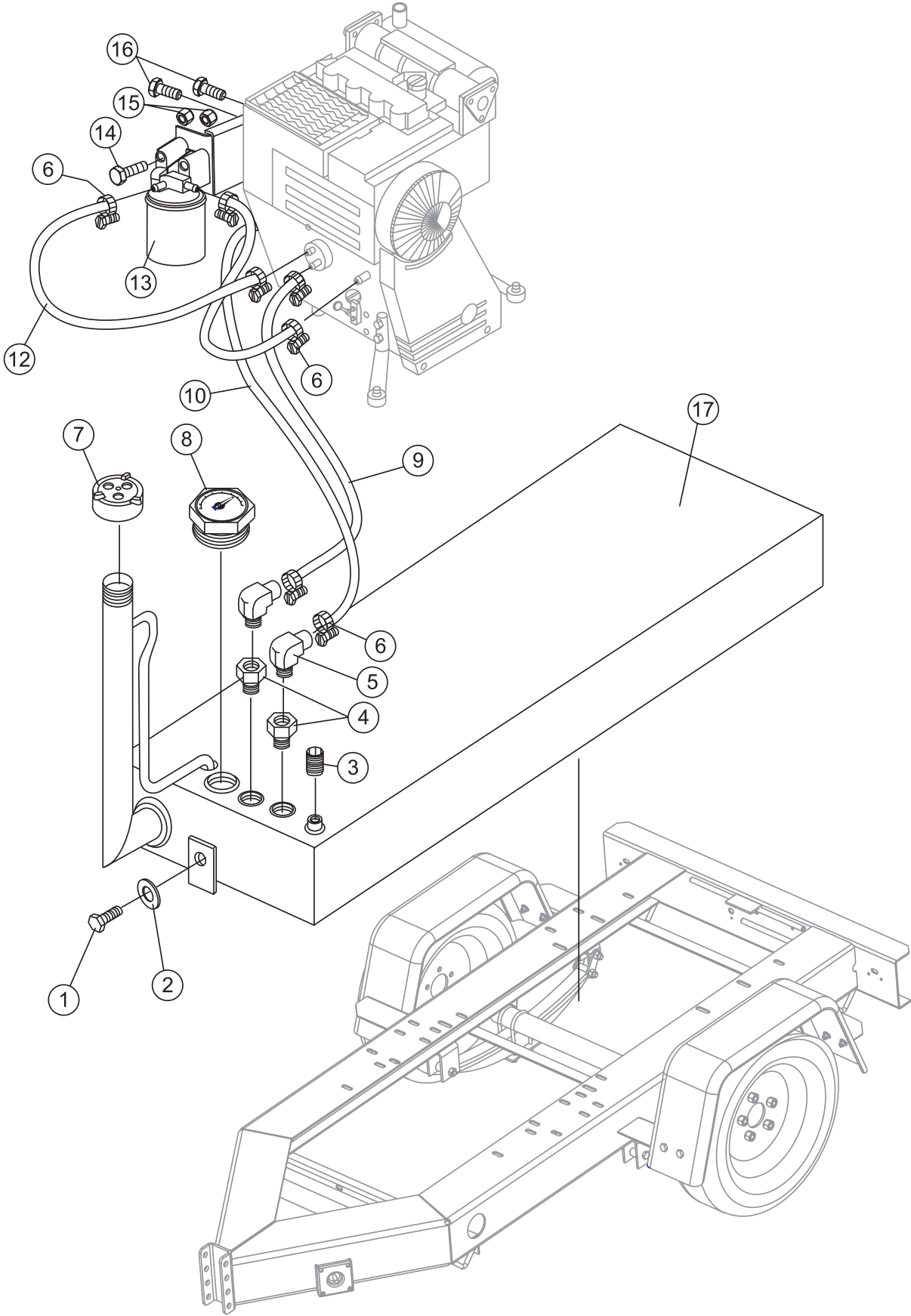
LIFTING BAIL ASSY. (SKID)



LIFTING BAIL ASSY. (SKID)

| <u>NO.</u> | <u>PART NO.</u> | <u>PART NAME</u> | <u>QTY.</u> | <u>REMARKS</u> |
|------------|-----------------|----------------------|-------------|----------------|
| 1 | 19092 | LIFTING BAIL | 1 | |
| 2 | 6109210 | 1/2 -13 x 1-1/2 BOLT | 4 | |
| 3 | 6109810 | 1/2 WASHER, LOCK | 4 | |
| 4 | 6109160 | 1/2 NUT | 4 | |

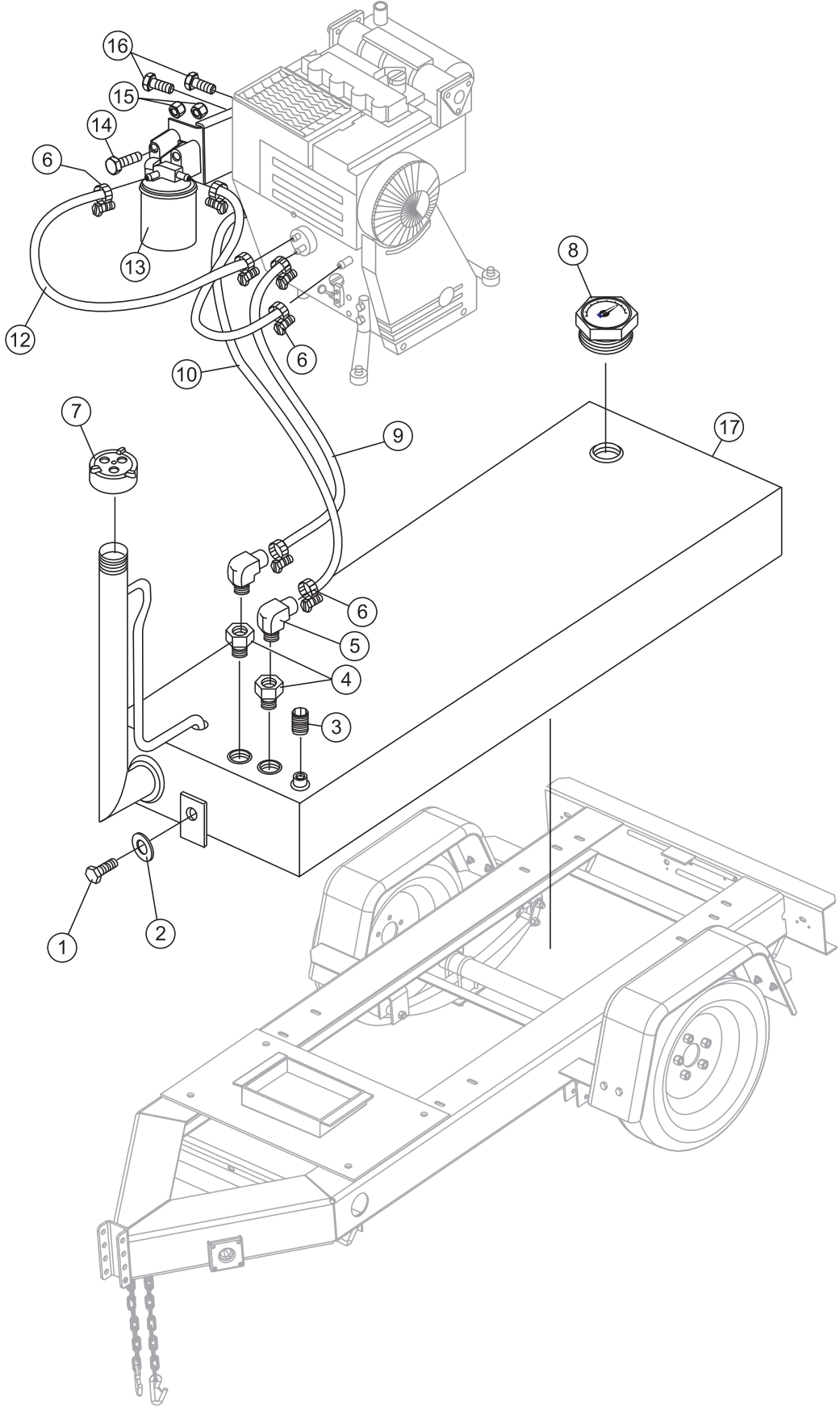
FUEL ASSY. (TRLRMPXF)



FUEL ASSY. (TRLRMPXF)

| <u>NO.</u> | <u>PART NO.</u> | <u>PART NAME</u> | <u>QTY.</u> | <u>REMARKS</u> |
|------------|-----------------|-------------------------|-------------|--------------------|
| 1 | 6109210 | 1/2 - 13 x 1-1/2 BOLT | 1 | |
| 2 | 6109208 | WASHER, FLAT | 1 | |
| 3% | | PLUG | 1 | |
| 4 | 5284 | PICK UP TUBE | 2 | |
| 5 | 84454 | FITTING, 90° | 2 | |
| 6 | 6109152 | CLAMP | 7 | |
| 7 | 7V3177002 | CAP | 1 | |
| 8 | EE58784 | FUEL GAUGE | 1 | |
| 9 | 6636A | HOSE, 77" | 1 | |
| 10 | 6635BULK | HOSE, 77" | 1 | |
| 12 | | HOSE | 1 | INCLUDED W/ENGINE |
| 13 | 01174696 | FUEL FILTER | 1 | |
| 14 | XXXXX | 5/16 x 2-1/2 SHOP STOCK | 1 | |
| 15 | XXXXX | NUT | 2 | |
| 16 | XXXXX | 10 x 20 BOLT | 2 | |
| 17 | 31223MP-30FGC | FUEL CELL | 1 | INCLUDES ITEMS W/% |

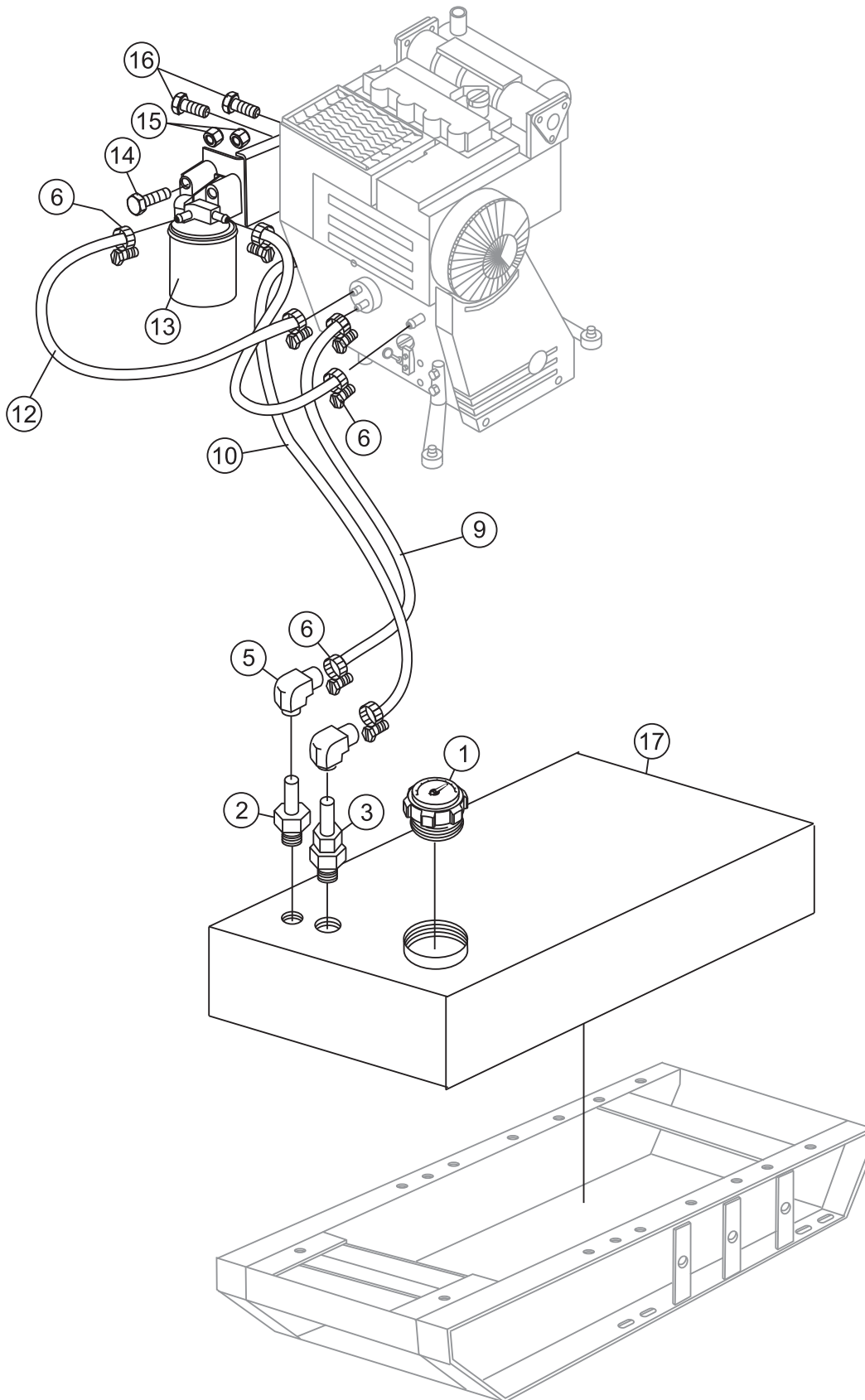
FUEL ASSY. (TRLR50XF)



FUEL ASSY. (TRLR50XF)

| <u>NO.</u> | <u>PART NO.</u> | <u>PART NAME</u> | <u>QTY.</u> | <u>REMARKS</u> |
|------------|-----------------|-------------------------|-------------|--------------------|
| 1 | 6109210 | 1/2 - 13 x 1-1/2 BOLT | 1 | |
| 2 | 6109208 | WASHER, FLAT | 1 | |
| 3% | | PLUG | 1 | |
| 4 | 5284 | PICK UP TUBE | 2 | |
| 5 | 84454 | FITTING, 90° | 2 | |
| 6 | 6109152 | CLAMP | 7 | |
| 7 | 7V3177002 | CAP | 1 | |
| 8 | EE58784 | FUEL GAUGE | 1 | |
| 9 | 6636A | HOSE, 77" | 1 | |
| 10 | 6635BULK | HOSE, 77" | 1 | |
| 12 | | HOSE | 1 | INCLUDED W/ENGINE |
| 13 | 01174696 | FUEL FILTER | 1 | |
| 14 | XXXXX | 5/16 x 2-1/2 SHOP STOCK | 1 | |
| 15 | XXXXX | NUT | 2 | |
| 16 | XXXXX | 10 x 20 BOLT | 2 | |
| 17 | 3122302E-41FGC | FUEL CELL | 1 | INCLUDES ITEMS W/% |

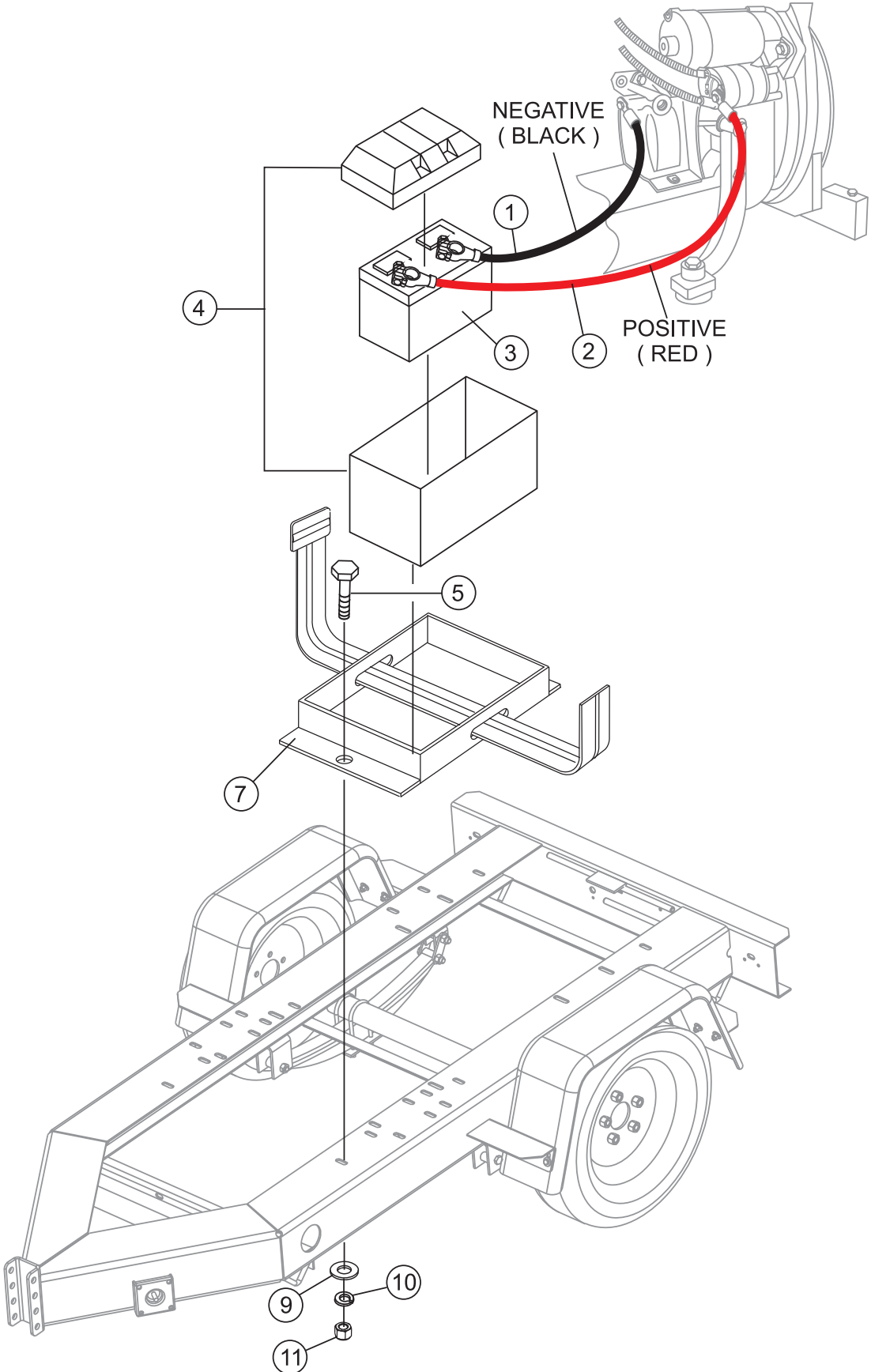
FUEL ASSY. (SKID)



FUEL ASSY. (SKID)

| <u>NO.</u> | <u>PART NO.</u> | <u>PART NAME</u> | <u>QTY.</u> | <u>REMARKS</u> |
|------------|-----------------|-------------------------|-------------|----------------|
| 1 | EE58784 | FUEL GAUGE | 1 | |
| 2 | XXXXX | FITTING | 1 | |
| 3 | XXXXX | FITTING | 1 | |
| 5 | XXXXX | FITTING, 90° | 2 | |
| 6 | 6109152 | CLAMP | 7 | |
| 9 | XXXXX | HOSE | 1 | |
| 10 | XXXXX | HOSE | 1 | |
| 12 | XXXXX | HOSE | 1 | |
| 13 | XXXXX | FUEL FILTER | 1 | |
| 14 | XXXXX | 5/16 x 2-1/2 SHOP STOCK | 1 | |
| 15 | XXXXX | NUT | 2 | |
| 16 | XXXXX | 10 x 20 BOLT | 2 | |
| 17 | XXXXX | FUEL CELL | 1 | |

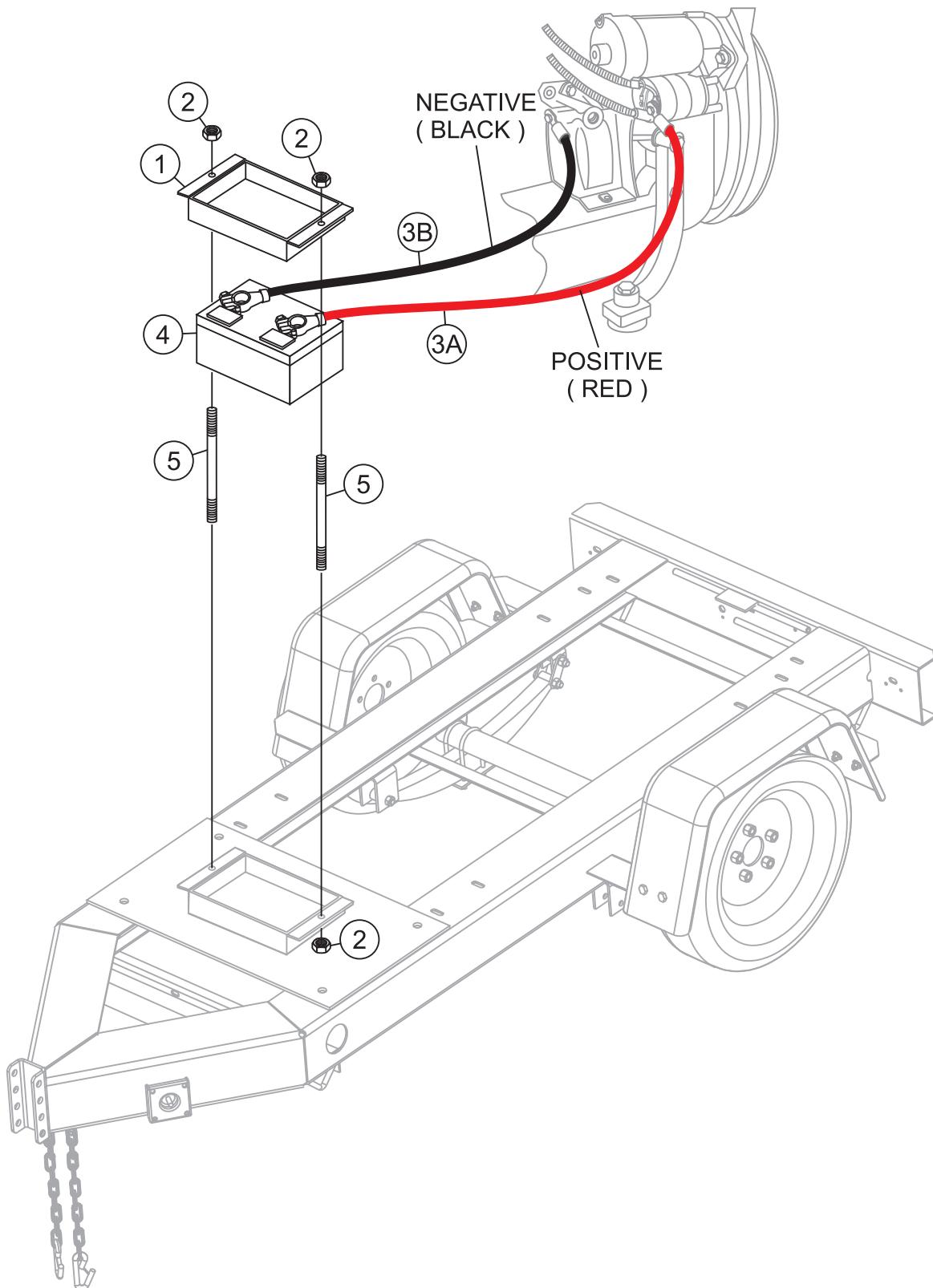
BATTERY ASSY. (TRLRMPXF)



BATTERY ASSY. (TRLRMPXF)

| <u>NO.</u> | <u>PART NO.</u> | <u>PART NAME</u> | <u>QTY.</u> | <u>REMARKS</u> |
|------------|-----------------|------------------------|-------------|----------------|
| 1 | 34596 | NEGATIVE BATTERY CABLE | 1 | |
| 2 | 34597 | POSITIVE BATTERY CABLE | 1 | |
| 3 | 0165306531 | BATTERY | 1 | |
| 4 | 34506 | BATTERY BOX | 1 | |
| 5 | XXXXXX | BOLT, 5/16 X 1-1/4 | 1 | |
| 7 | 6109100 | BATTERY HOLD DOWN | 1 | |
| 9 | 2101403 | WASHER, FLAT | 1 | |
| 10 | 2103200 | WASHER, LOCK | 1 | |
| 11 | 3019091 | NUT | 1 | |

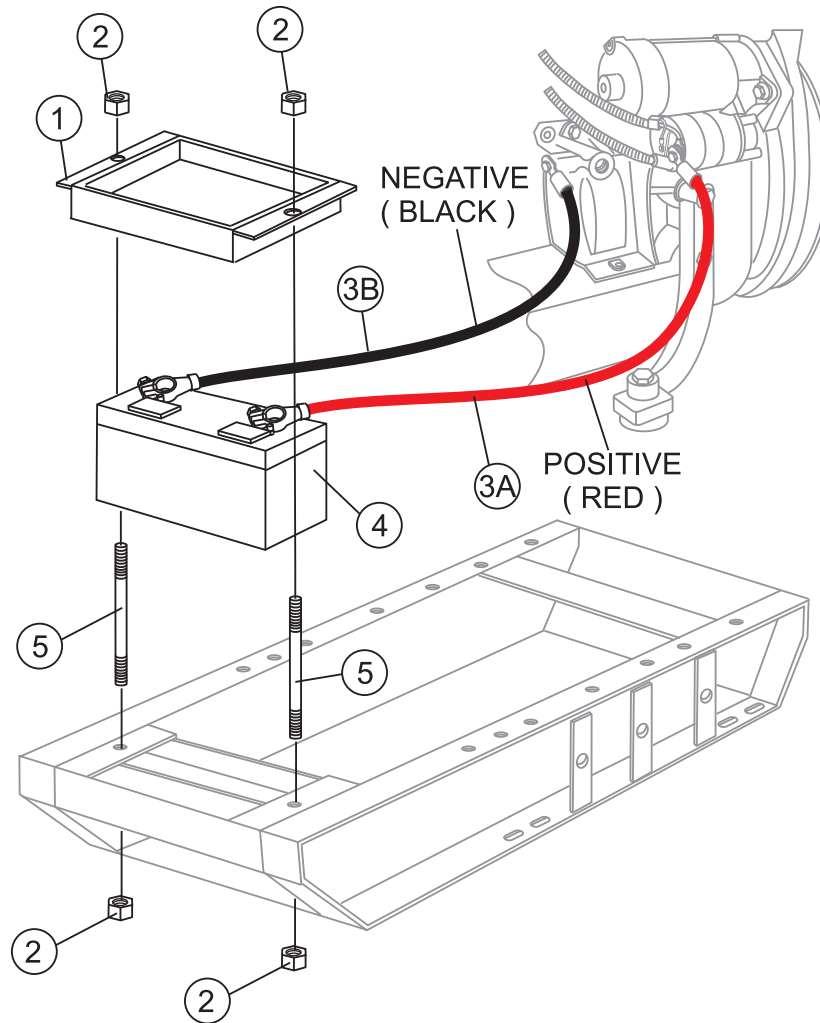
BATTERY ASSY. (TRLR50XF)



BATTERY ASSY. (TRLR50XF)

| <u>NO.</u> | <u>PART NO.</u> | <u>PART NAME</u> | <u>QTY.</u> | <u>REMARKS</u> |
|------------|-----------------|-------------------------|-------------|----------------|
| 1 | 6109100 | BATTERY HOLD DOWN | 1 | |
| 2 | 3019091 | NUT | 4 | |
| 3A | 34597 | POSITIVE BATTERY CABLE | 1 | |
| 3B | 34596 | NEGATIVE BATTERY CABLE | 1 | |
| 4 | 0165306531 | BATTERY | 1 | |
| 5 | 6109108 | BOLT, BATTERY HOLD DOWN | 2 | |

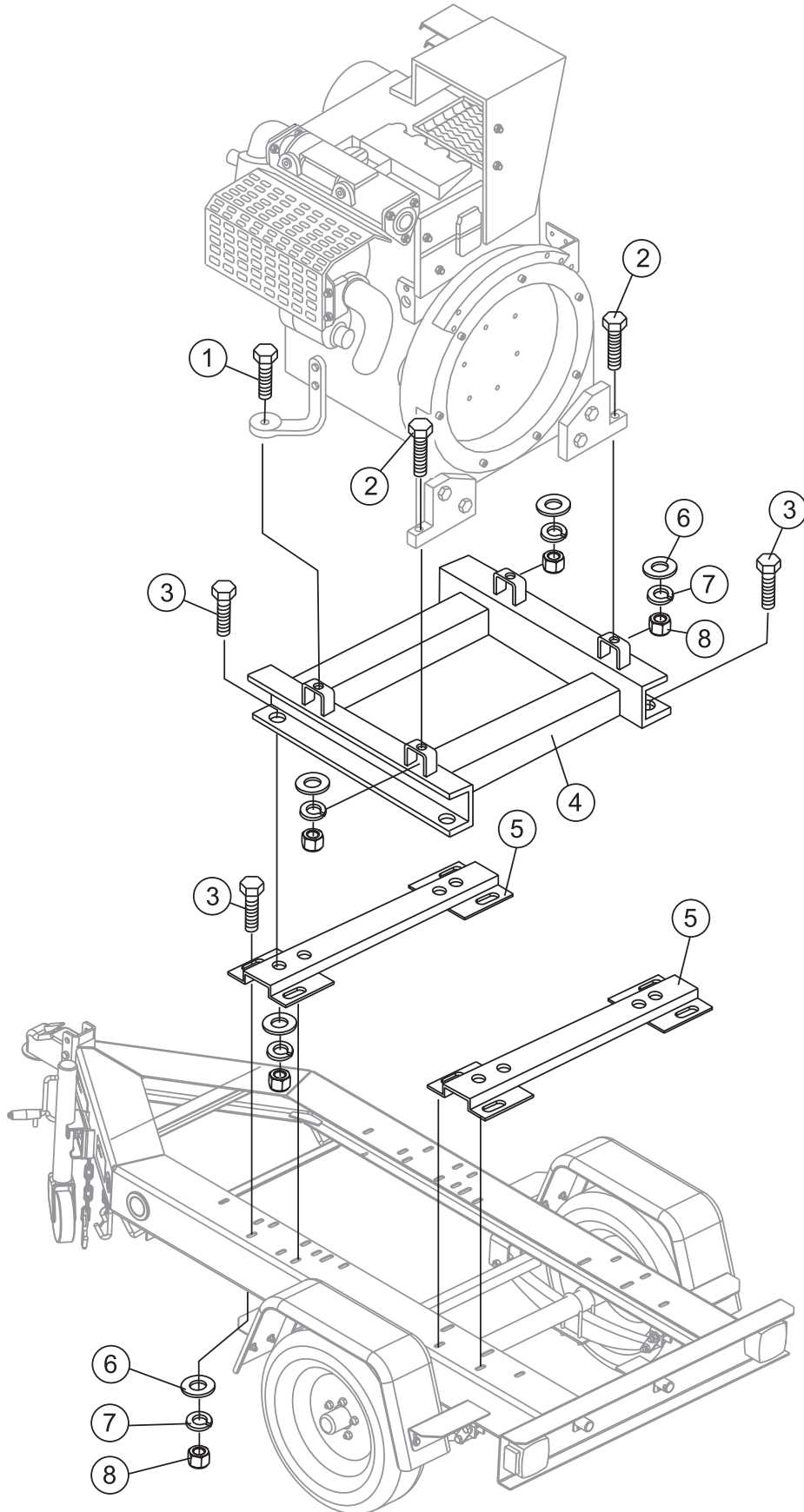
BATTERY ASSY. (SKID)



BATTERY ASSY. (SKID)

| <u>NO.</u> | <u>PART NO.</u> | <u>PART NAME</u> | <u>QTY.</u> | <u>REMARKS</u> |
|------------|-----------------|-------------------------|-------------|----------------|
| 1 | 6109100 | BATTERY HOLD DOWN | 1 | |
| 2 | 3019091 | NUT | 4 | |
| 3A | 34597 | POSITIVE BATTERY CABLE | 1 | |
| 3B | 34596 | NEGATIVE BATTERY CABLE | 1 | |
| 4 | 0165306531 | BATTERY | 1 | |
| 5 | 6109108 | BOLT, BATTERY HOLD DOWN | 2 | |

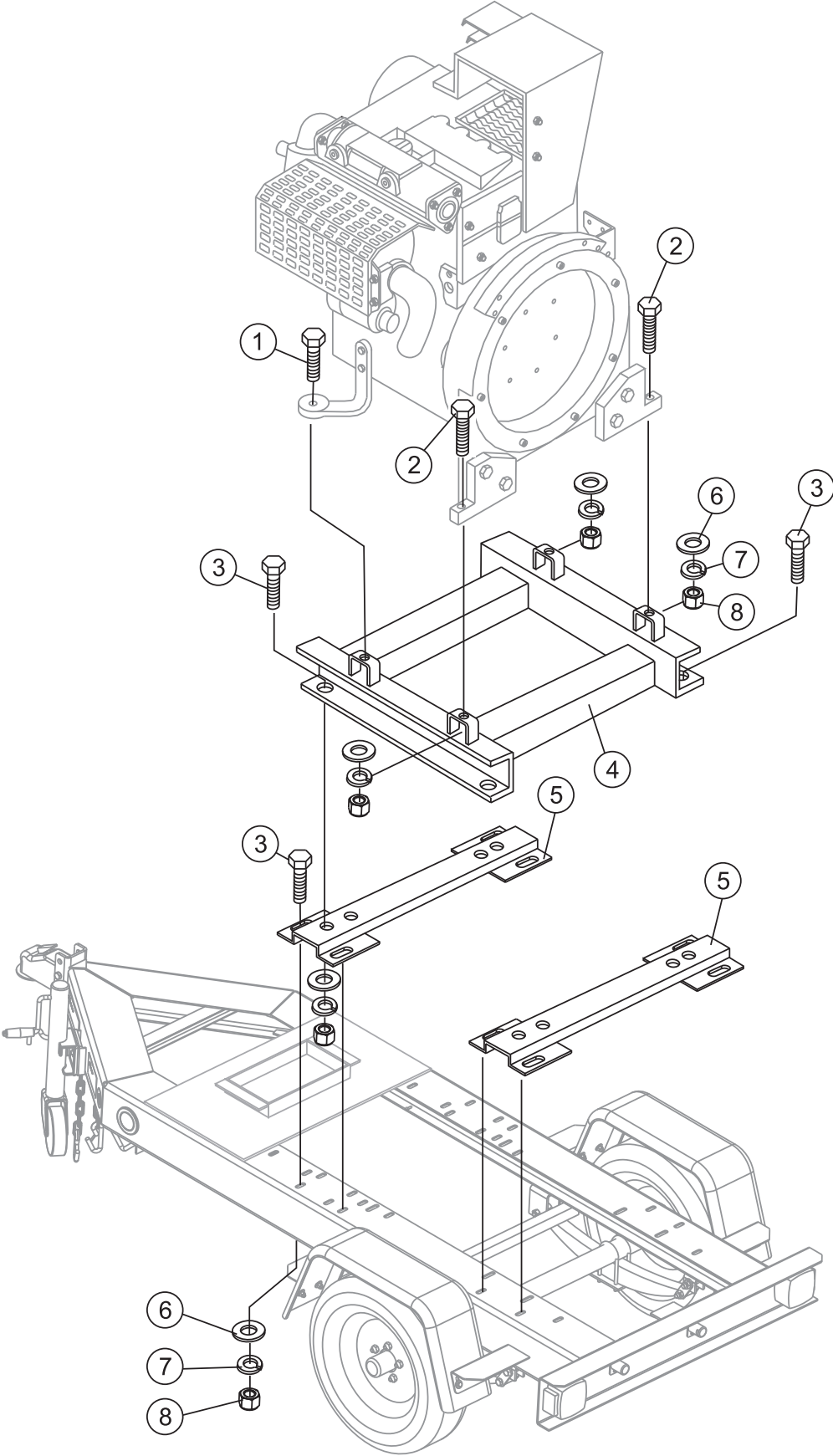
ENGINE MOUNTING ASSY. (TRLRMPXF)



ENGINE MOUNTING ASSY. (TRLRMPXF)

| <u>NO.</u> | <u>PART NO.</u> | <u>PART NAME</u> | <u>QTY.</u> | <u>REMARKS</u> |
|------------|-----------------|------------------------------|-------------|----------------|
| 1 | 016212070 | BOLT, 12X70 | 2 | |
| 2 | 34400 | BOLT, HEX HEAD 12X100 | 2 | |
| 3 | 6109210 | BOLT, HEX HEAD 1/2"-13X1-1/2 | 4 | |
| 4 | XXX001 | BRACKET, BASE | 1 | |
| 5 | XXX002 | BRACKET, CHANNEL | 2 | |
| 6 | 13211 | WASHER, FLAT | 12 | |
| 7 | 6109180 | WASHER, LOCK 1/2 | 16 | |
| 8 | 0039312000 | NUT, M12 | 16 | |

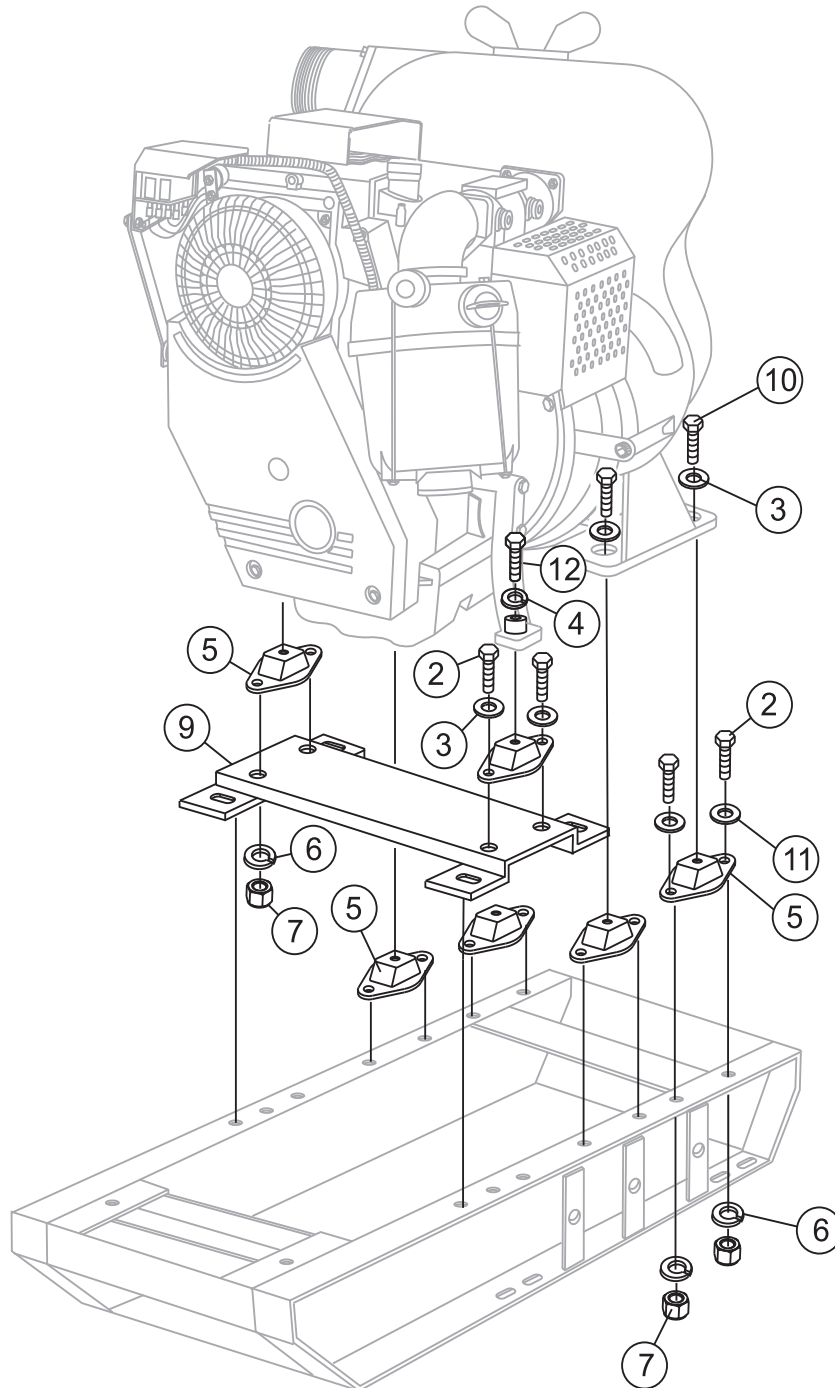
ENGINE MOUNTING ASSY. (TRLR50XF)



ENGINE MOUNTING ASSY. (TRLR50XF)

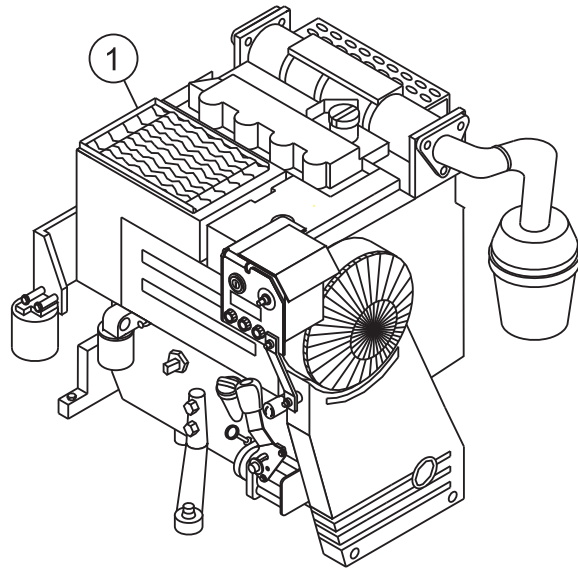
| <u>NO.</u> | <u>PART NO.</u> | <u>PART NAME</u> | <u>QTY.</u> | <u>REMARKS</u> |
|------------|-----------------|------------------------------|-------------|----------------|
| 1 | 016212070 | BOLT, 12X70 | 2 | |
| 2 | 34400 | BOLT, HEX HEAD 12X100 | 2 | |
| 3 | 6109210 | BOLT, HEX HEAD 1/2"-13X1-1/2 | 4 | |
| 4 | XXX001 | BRACKET, BASE | 1 | |
| 5 | XXX002 | BRACKET, CHANNEL | 2 | |
| 6 | 13211 | WASHER, FLAT | 12 | |
| 7 | 6109180 | WASHER, LOCK 1/2 | 16 | |
| 8 | 0039312000 | NUT, M12 | 16 | |

ENGINE MOUNTING ASSY. (SKID)



ENGINE MOUNTING ASSY. (SKID)

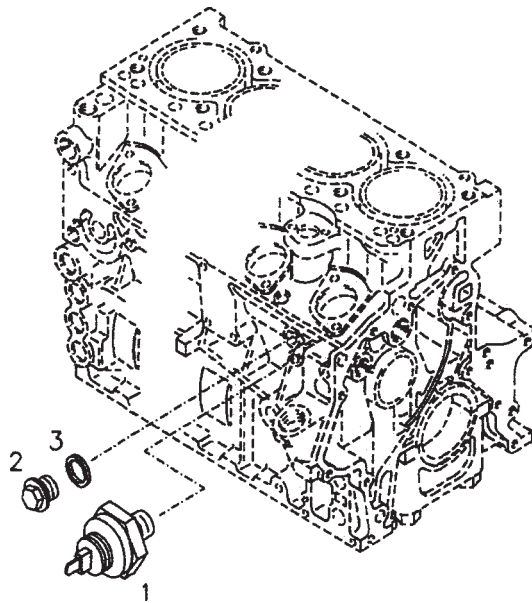
| <u>NO.</u> | <u>PART NO.</u> | <u>PART NAME</u> | <u>QTY.</u> | <u>REMARKS</u> |
|------------|-----------------|------------------------------|-------------|----------------|
| 2 | 2101030 | 10 x 30 HEX BOLT | 12 | |
| 3 | 030216400 | WASHER, LOCK | 8 | |
| 4 | 6109180 | WASHER, LOCK | 2 | |
| 5 | 63541 | SHOCK MOUNT | 6 | |
| 6 | 030210250 | WASHER, LOCK M10 | 12 | |
| 7 | 020310080 | NUT M10 | 12 | |
| 9 | 60TDD008 | PUMP AND ENGINE BASE BRACKET | 1 | |
| 10 | 012216060 | 16 x 60 HEX BOLT | 4 | |
| 11 | 13211 | WASHER, FLAT | 8 | |
| 12 | 016212070 | 12 x 70 FULL THREAD | 2 | |



ENGINE ASSY.

| <u>NO.</u> | <u>PART NO.</u> | <u>PART NAME</u> | <u>QTY.</u> | <u>REMARKS</u> |
|------------|-----------------|----------------------|-------------|----------------|
| 1 | F2L20116728 | DEUTZ F2L2011 ENGINE | 1 | |

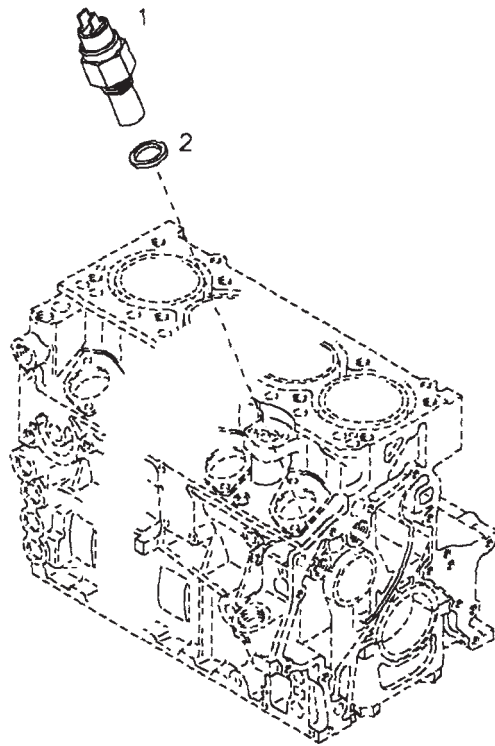
OIL PRESSURE SWITCH ASSY.



OIL PRESSURE SWITCH ASSY.

| <u>NO.</u> | <u>PART NO.</u> | <u>PART NAME</u> | <u>QTY.</u> | <u>REMARKS</u> |
|------------|-----------------|---------------------|-------------|----------------|
| 1 | 1182484 | OIL PRESSURE SWITCH | 1 | |
| 2 | 01118971 | SCREW PLUG | 1 | |
| 3 | 01118718 | SEALING RING | 1 | |

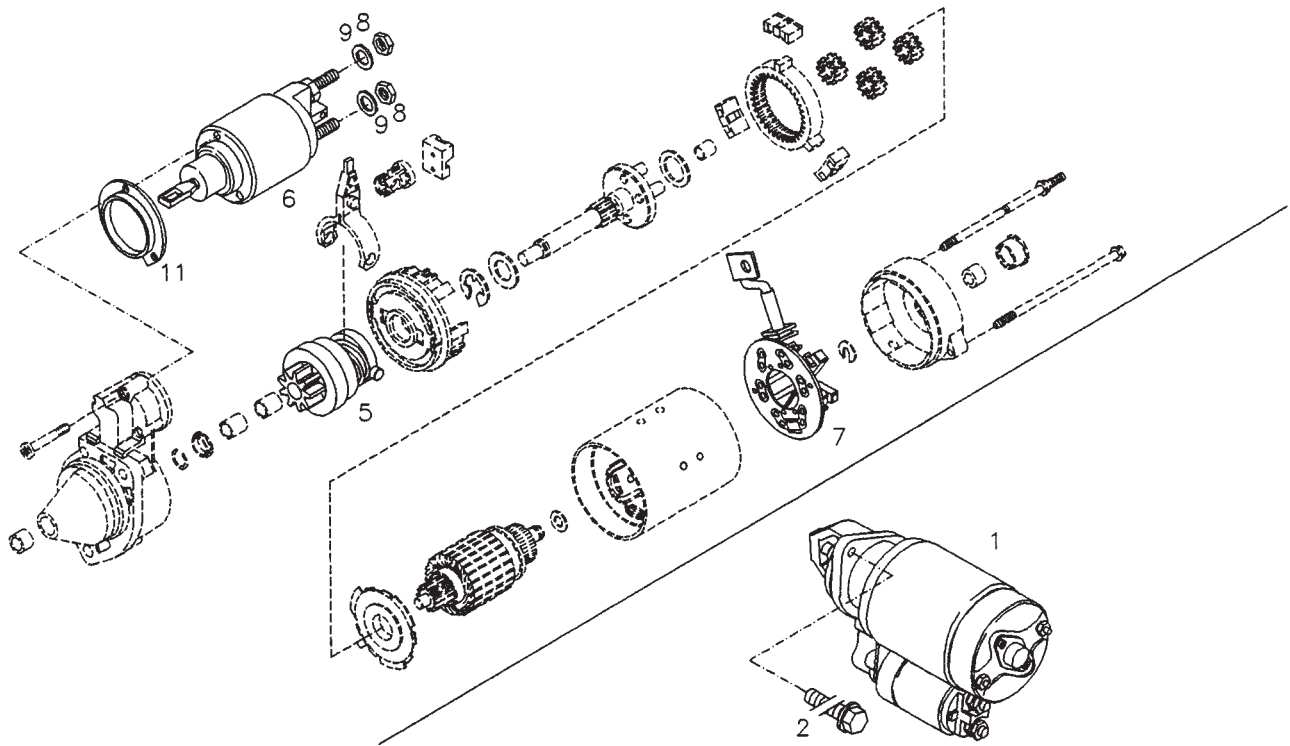
TEMPERATURE TRANSMITTER ASSY.



TEMPERATURE TRANSMITTER ASSY.

| <u>NO.</u> | <u>PART NO.</u> | <u>PART NAME</u> | <u>QTY.</u> | <u>REMARKS</u> |
|------------|-----------------|-------------------------------|-------------|-------------------|
| 1 | 01182377 | TEMPERATURE TRANSMITTER | 1 | INCLUDE ITEMS W/* |
| 2* | 01143531 | SEALING RING | 1 | |

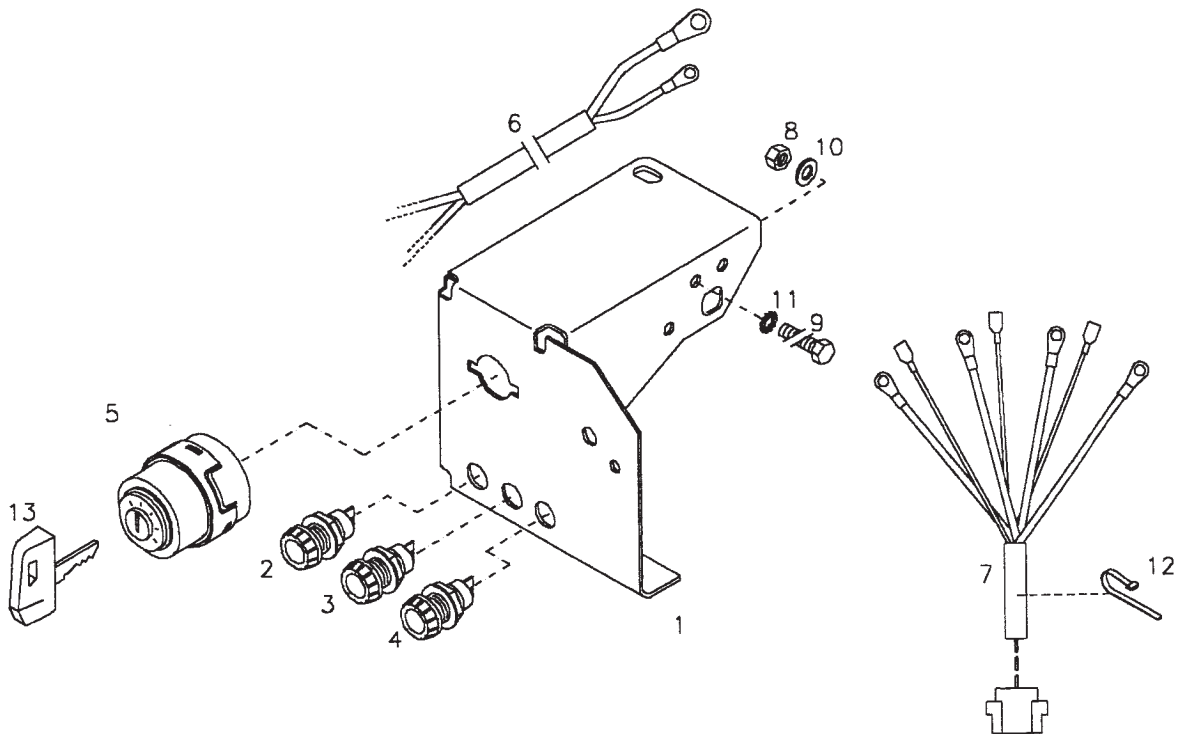
STARTER ASSY.



STARTER ASSY.

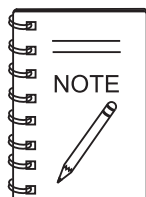
| <u>NO.</u> | <u>PART NO.</u> | <u>PART NAME</u> | <u>QTY.</u> | <u>REMARKS</u> |
|------------|-----------------|------------------|-------------|----------------|
| 1 | 01182384 | STARTER | 1 | |
| 2 | 01181390 | HEXAGON BOLT | 2 | |
| 5 | 01340070 | STARTER PINION | 1 | |
| 6 | 01319265 | RELAY | 1 | |
| 7 | 01319920 | BRUSH HOLDER | 1 | |
| 8 | 01318659 | HEXAGON NUT | 2 | |
| 9 | 01320257 | WASHER, LOCK | 2 | |
| 11 | 01319761 | COVERING PLATE | 1 | |

CONTROL BOX ASSY. (OLD STYLE)



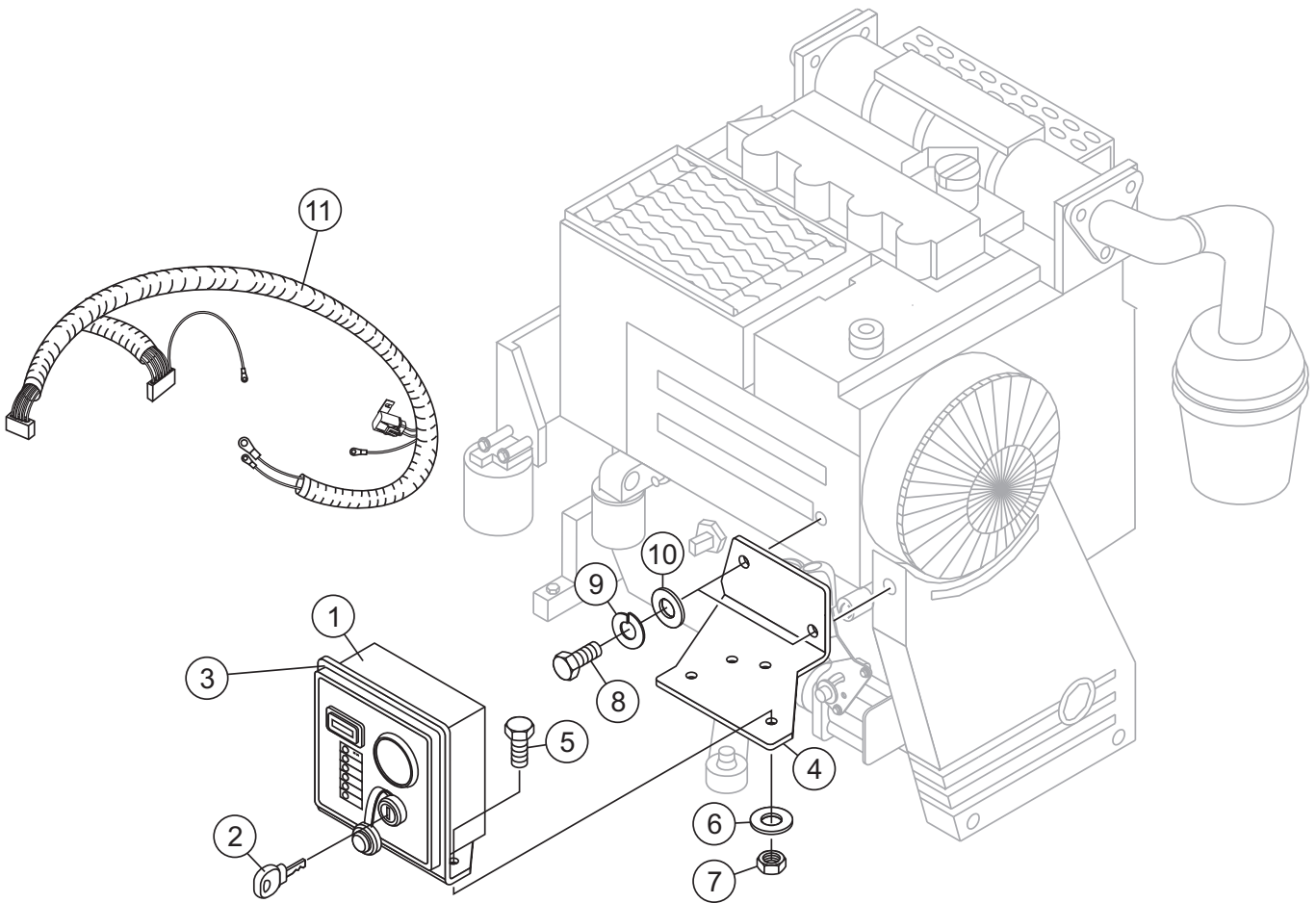
CONTROL BOX ASSY. (OLD STYLE)

| <u>NO.</u> | <u>PART NO.</u> | <u>PART NAME</u> | <u>QTY.</u> | <u>REMARKS</u> |
|------------|-----------------|-----------------------------|-------------|-------------------------------------|
| 1 | | CONTROL BOX..... | 1 | INCLUDES ITEMS W/% — SEE NOTE BELOW |
| 2% | 01180384 | SIGNAL LIGHT | 1 | |
| 3% | 01180382 | SIGNAL LIGHT | 1 | |
| 4% | 01180383 | SIGNAL LIGHT | 1 | |
| 5% | 01182528 | PREHEAT STARTER SWITCH..... | 1 | INCLUDE ITEMS W/# |
| 6% | 04179738 | CABLE HARNESS | 1 | |
| 7% | 04179735 | CABLE HARNESS | 1 | |
| 8% | 01112802 | HEXAGON NUT | 1 | |
| 9% | 01112195 | HEXAGON BOLT | 1 | |
| 10% | 01140498 | WASHER, FLAT | 1 | |
| 11% | 01117860 | TOOTH LOCK WASHER | 1 | |
| 12% | 01180017 | CLAMPING BAND | 1 | |
| 13%# | 01182529 | IGNITION KEY | 1 | |



OLD STYLE CONTROL BOX NO LONGER AVAILABLE.
 WHEN REPLACING CONTROL BOX, USE P/N 34708.
 SEE NEW STYLE CONTROL BOX ASSEMBLY NEXT
 PAGE.

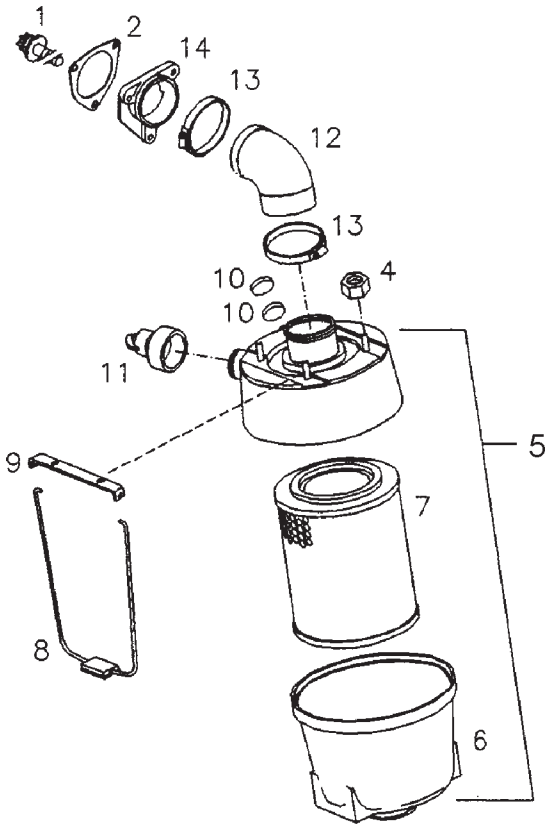
CONTROL BOX ASSY. (NEW STYLE)



CONTROL BOX ASSY. (NEW STYLE)

| <u>NO.</u> | <u>PART NO.</u> | <u>PART NAME</u> | <u>QTY.</u> | <u>REMARKS</u> |
|------------|-----------------|---------------------|-------------|----------------|
| 1 | 34708 | CONTROL BOX | 1 | |
| 2 | EM98206 | IGNITION KEY | 1 | |
| 3 | 34709 | CONTROL BOX BRACKET | 1 | |
| 4 | 34707 | ENGINE BRACKET | 1 | |
| 5 | XXXXXX | BOLT | 3 | |
| 6 | XXXXXX | WASHER | 3 | |
| 7 | XXXXXX | NUT | 3 | |
| 8 | XXXXXX | BOLT | 2 | |
| 9 | XXXXXX | LOCK WASHER | 2 | |
| 10 | XXXXXX | WASHER | 2 | |
| 11 | 34710 | HARNES | 1 | |

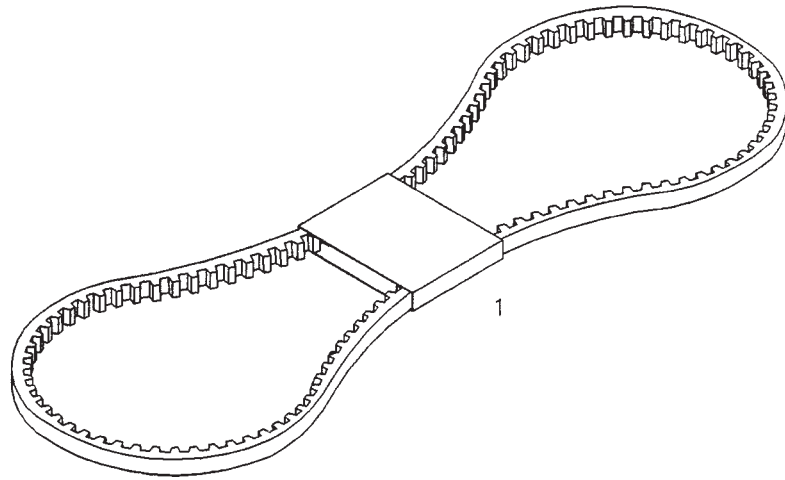
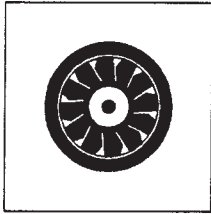
AIR FILTER ASSY.



AIR FILTER ASSY.

| <u>NO.</u> | <u>PART NO.</u> | <u>PART NAME</u> | <u>QTY.</u> | <u>REMARKS</u> |
|------------|-----------------|-------------------|-------------|-------------------|
| 1 | 01179428 | TROX-HEAD BOLT | 3 | |
| 2 | 04272299 | GASKET | 1 | |
| 4 | 01112824 | HEXAGON NUT | 4 | |
| 5 | 02169927 | AIR CLEANER | 1 | INCLUDE ITEMS W/* |
| 6* | 02240281 | HOOD | 1 | |
| 7* | 02339813 | CARTRIDGE | 1 | |
| 8* | 02240283 | CLAMPING YOKE | 2 | |
| 9* | 02240285 | ANGLE PLATE | 2 | |
| 10* | 03363577 | FELT WASHER | 2 | |
| 11* | 02165357 | DUST EJECTOR | 1 | |
| 12 | 04172501 | INTAKE ELBOW | 1 | |
| 13 | 01173940 | HOSE CLIP | 2 | |
| 14 | 04172837 | HOSE NIPPLE | 1 | |

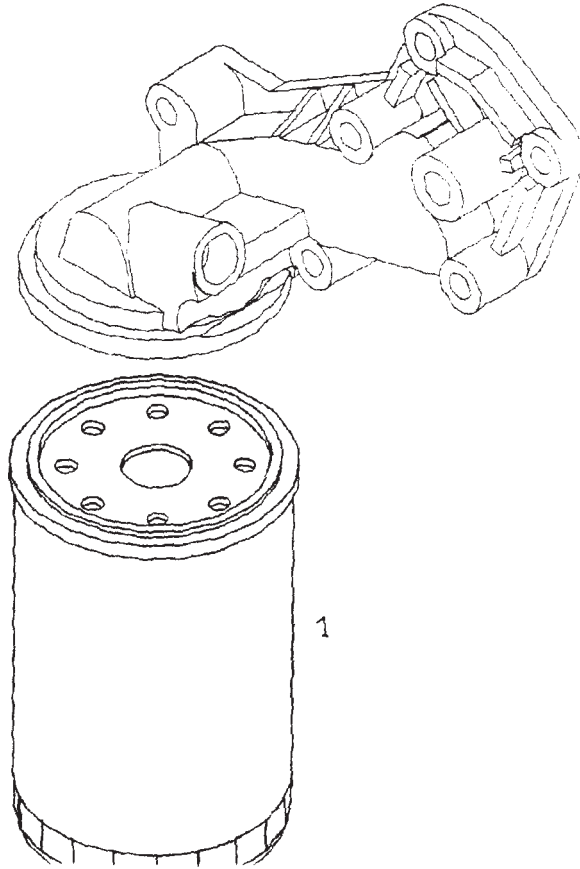
NARROW V-BELT ASSY.



NARROW V-BELT ASSY.

| <u>NO.</u> | <u>PART NO.</u> | <u>PART NAME</u> | <u>QTY.</u> | <u>REMARKS</u> |
|------------|-----------------|------------------|-------------|----------------|
| 1 | 01179565 | NARROW V-BELT | 1 | |

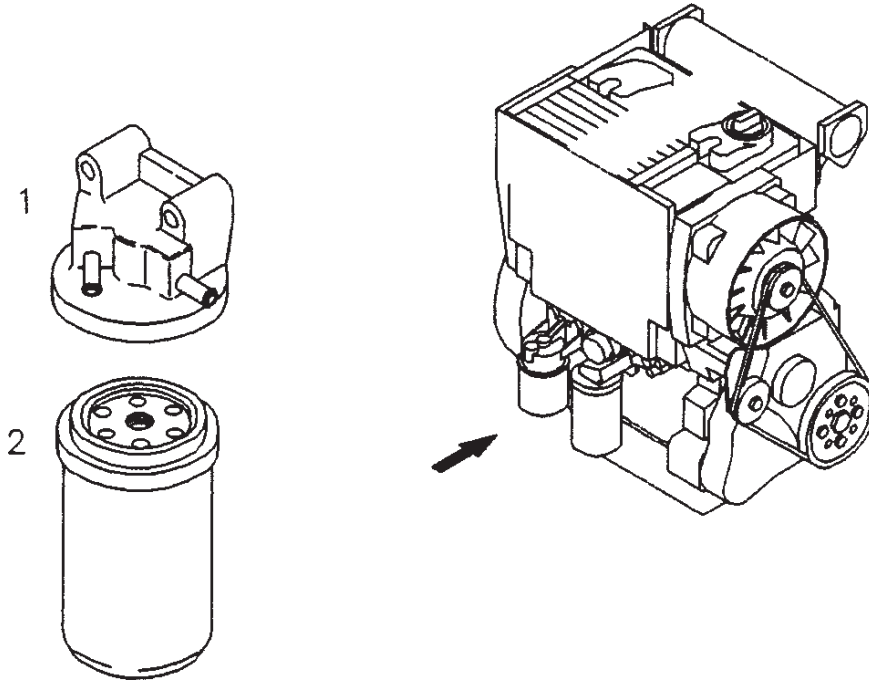
LUBRICATED OIL FILTER ASSY.



LUBRICATED OIL FILTER ASSY.

| <u>NO.</u> | <u>PART NO.</u> | <u>PART NAME</u> | <u>QTY.</u> | <u>REMARKS</u> |
|------------|-----------------|--------------------|-------------|----------------|
| 1 | 01174416 | SPIN-ON OIL FILTER | 1 | |

FUEL FILTER ASSY.



FUEL FILTER ASSY.

| <u>NO.</u> | <u>PART NO.</u> | <u>PART NAME</u> | <u>QTY.</u> | <u>REMARKS</u> |
|------------|-----------------|---------------------|-------------|----------------|
| 1 | 04270708 | BRACKET | 1 | |
| 2 | 01174696 | SPIN-ON FUEL FILTER | 1 | |

PARTS MANUAL

HERE'S HOW TO GET HELP

PLEASE HAVE THE MODEL AND SERIAL
NUMBER ON-HAND WHEN CALLING

UNITED STATES

Multiquip Inc.

(310) 537- 3700
6141 Katella Avenue Suite 200
Cypress, CA 90630
E-MAIL: mq@multiquip.com
WEBSITE: www.multiquip.com

CANADA

Multiquip

(450) 625-2244
4110 Industriel Boul.
Laval, Quebec, Canada H7L 6V3
E-MAIL: infocanada@multiquip.com

UNITED KINGDOM

Multiquip (UK) Limited Head Office

0161 339 2223
Unit 2, Northpoint Industrial Estate,
Globe Lane,
Dukinfield, Cheshire SK16 4UJ
E-MAIL: sales@multiquip.co.uk

© COPYRIGHT 2020, MULTIQUIP INC.

Multiquip Inc, the MQ logo are registered trademarks of Multiquip Inc. and may not be used, reproduced, or altered without written permission. All other trademarks are the property of their respective owners and used with permission.

This manual MUST accompany the equipment at all times. This manual is considered a permanent part of the equipment and should remain with the unit if resold.

The information and specifications included in this publication were in effect at the time of approval for printing. Illustrations, descriptions, references and technical data contained in this manual are for guidance only and may not be considered as binding. Multiquip Inc. reserves the right to discontinue or change specifications, design or the information published in this publication at any time without notice and without incurring any obligations.

Your Local Dealer is:

