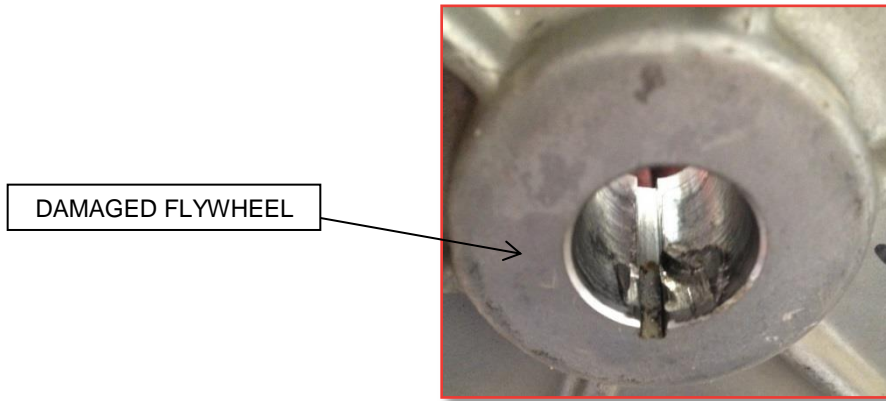




This bulletin is provided for technical reference and service related updates. If you have any questions, comments or do not wish to receive these e-mails, please reply to this e-mail or call the Service Technical Support Group 800 478-1244.

## ENGINE FLYWHEEL KEY SHEARING

It has been documented; some flywheel keys shearing on the ER12 engine used on the MTX70SD and MTX80SD rammers. The engine manufacturer was informed of this situation and made corrective actions since.



### EFFECTED PARTS:

- 0053203101 - Woodruff Key
- 0180140020 - Flange Nut
- 21E79230J1 - Flywheel

Preventive measure can be taken by inspecting the torque value of the flywheel nut.

(Torque specification **44-50 ft.-lbs.**)

Inspect the taper of the crankshaft for damage prior to replacing the flywheel. Before reassembly, clean the tapered areas of the new flywheel and crankshaft.

Units between serial numbers shown below with above reference failure will be considered for warranty on a fix as fail basis.

Rammer Model	<i>Rammer Serial Number</i>
<b>MTX-70SD</b>	Z1227~1246
	Z2013~2027
	Z2075~2228
	Z2234~2459
<b>MTX-80SD</b>	Z2472
	Z2725~2736
	Z2695~2700
	Z2702~2704
Robin Subaru Engine Model	<i>Engine Serial Number</i>
<b>ER120D45001</b>	#1005072-1005551