

Combination Lever Diagnostic

This documentation can be used as a guide on how to inspect and diagnose failure associated with the MTX series combination throttle / fuel lever assembly.

Possible symptoms and cause:

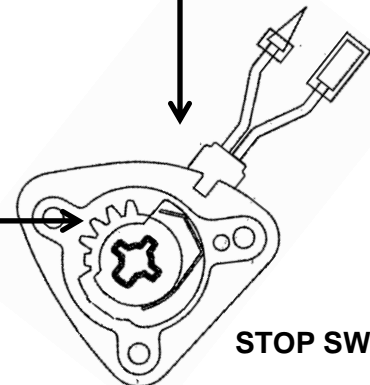
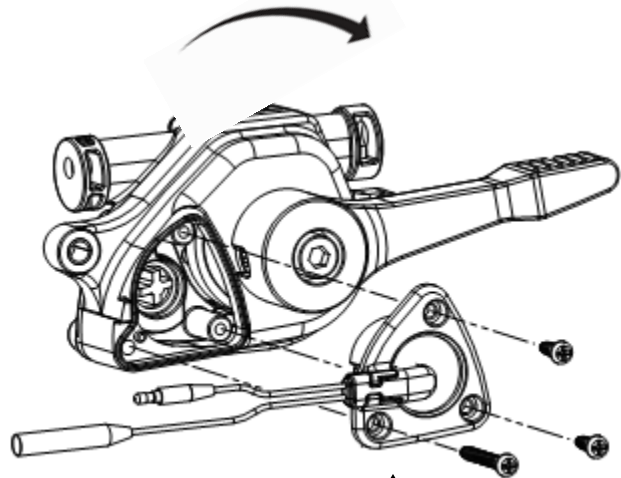
- 1) Unit will not start (not getting spark at the plug). **Cause:** *stop switch not rotating.*
- 2) Fuel is not flowing through the combo lever. **Cause:** *fuel cock not opening.*

Stop Switch

When removing or installing the stop switch, always remember:

- A. Ensure lever is in the high speed position.
- B. Stop switch is attached to the combo lever by (3) screws.
- C. Make sure splines line up, both stop switch and fuel cock.

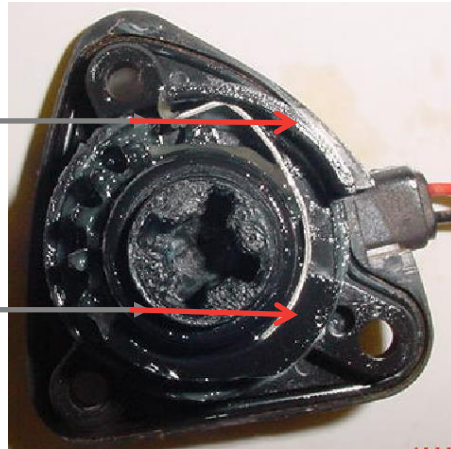
If stop switch gear teeth become worn or broken, this could possibly be from applying excessive force to the lever while trying to stop the machine in a rapid manner.



STOP SWITCH

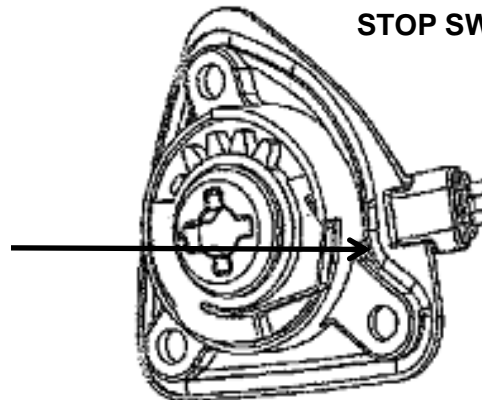
This metal contact part of the stop switch needs to rotate with the gear in order for the engine to start and stop. If the teeth are damaged, the stop switch will not function correctly.

NOTE: one part of the spline is larger



STOP SWITCH

Other potential stop switch wear is at the female part of the gear which rotates the fuel cock, it can wear from normal use or from abuse as well.

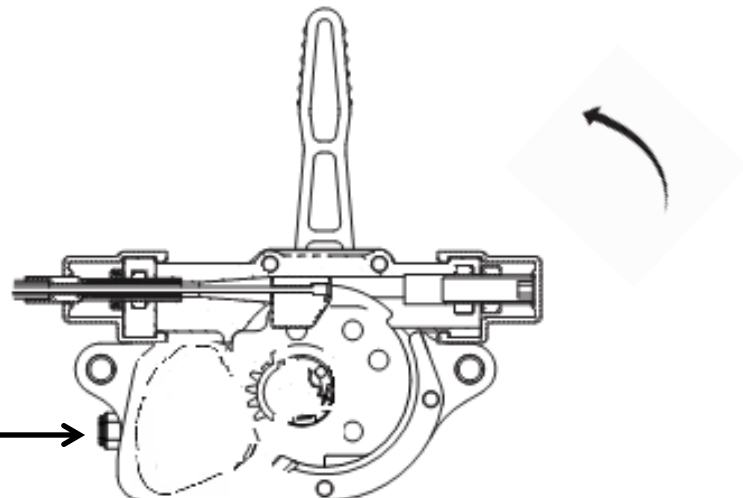


Stop Switch inspection points

1. Teeth that rotates with lever.
2. Female splined gear that rotates the fuel cock.
3. Metal contact for on/off switch.

After removing the stop switch, return lever to the stop position and inspect the lever gear for damaged teeth. If the teeth are damaged, you must replace the combo lever assembly, as this gear is not sold separately.

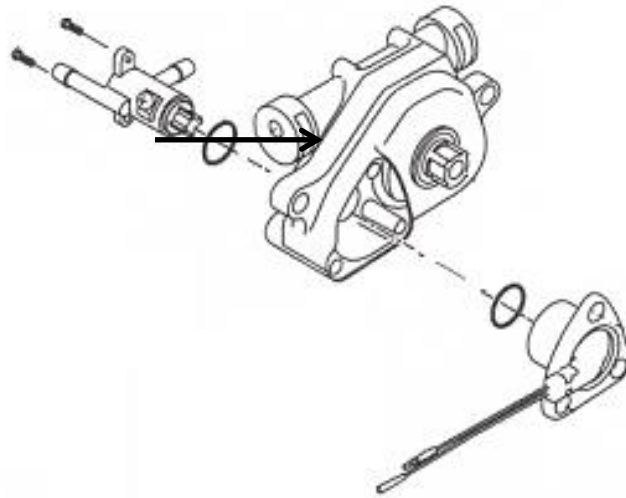
The lever gear teeth have direct contact with the stop switch teeth.



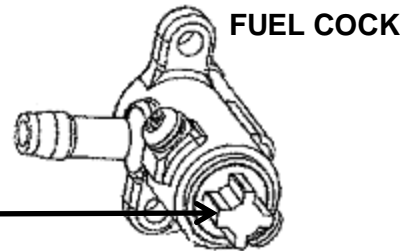


This bulletin is provided for technical reference and service related updates. If you have any questions, comments or do not wish to receive these e-mails, please reply to this e-mail or call the Service Technical Support Group 800 478-1244.

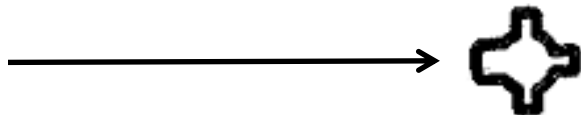
The fuel cock is attached to the combo lever on the opposite side of the stop switch by (2) screws.



The fuel cock has a splined shaft that inserts into the stop switch. If the stop switch is damaged the fuel cock will not rotate open. When assembling, assure splines on fuel cock shaft and stop switch are lined up correctly.



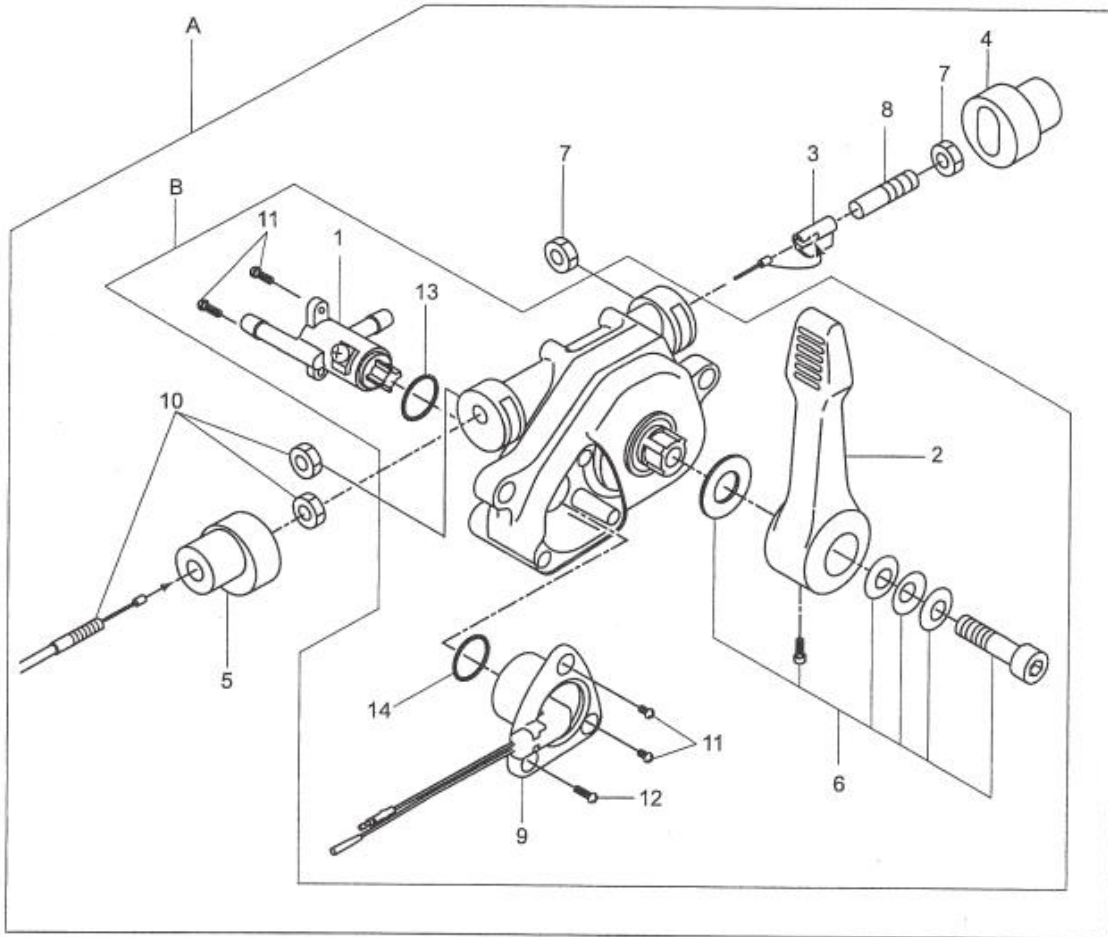
NOTE: one part of the splined shaft is larger.





This bulletin is provided for technical reference and service related updates. If you have any questions, comments or do not wish to receive these e-mails, please reply to this e-mail or call the Service Technical Support Group 800 478-1244.

Combination Lever Assembly



COMBINATION LEVER ASSY.

NO.	PART NO.	PART NAME	QTY.	REMARKS
A	366900030	LEVER AY W/T, WIRE	1	INCLUDES ITEMS W/*
B*	956200100	COMBINATION LEVER ASSY	1	INCLUDES ITEMS W/\$
1*\$	366346260	FUEL COCK	1	
2*\$	366010180	LEVER	1	
3*	366010190	SLIDER	1	
4*	366010200	END CAP	1	
5*	366010210	WIRE CAP	1	
6*\$	366010220	BOLT & WASHER SET	1	
7*	020408050	NUT M8, H=5	2	
8*	959407650	SOCKET HEAD SCREW/TH. WIRE	1	
9*\$	366010260	STOP SWITCH CP	1	
10*	956100062	THROTTLE WIRE	1	
11*\$	094010051	TAPPING SCREW B1 4X12	4	
12*\$	094010052	TAPPING SCREW B1 4X30	1	
13*\$	050200150	O-RING P-15	1	
14*\$	050200110	O-RING P-11	1	