



# MTX Series

## Fuel Tank Replacement

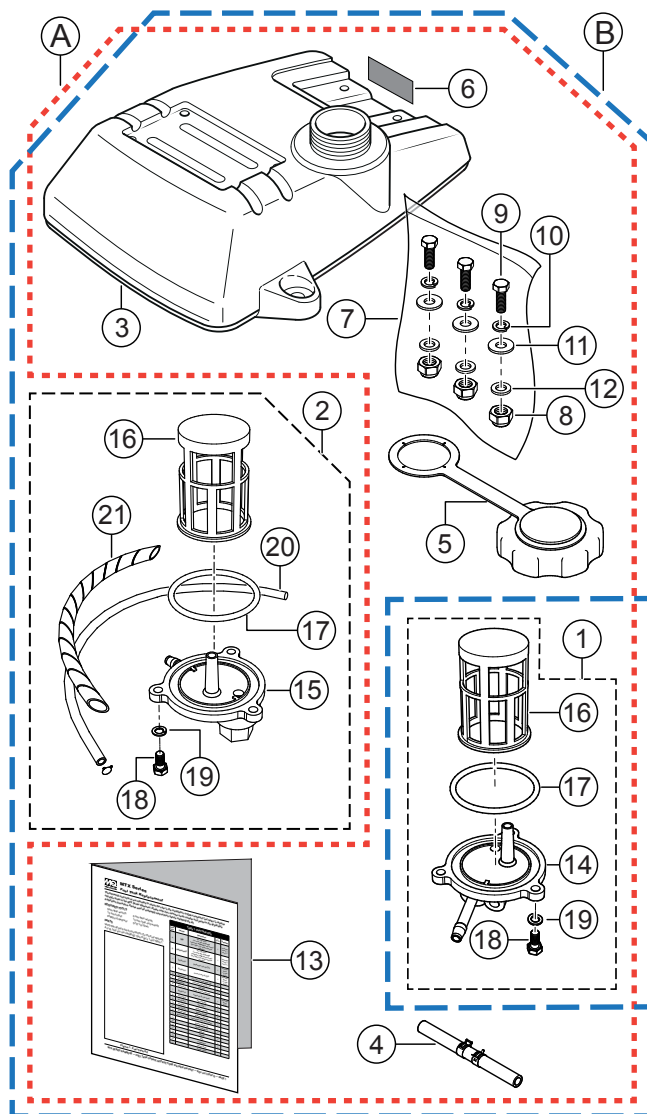
*The following instructions are intended to assist the user in the installation of EPA-compliant fuel tanks to replace old-style tanks in the MTX Series Rammers. Please note your rammer serial number and perform the applicable installation procedure. Please read all assembly instructions before installing the kit.*

### REQUIRED TOOLS

- 5mm allen wrench
- 6 mm allen wrench
- 13 mm socket
- 13 mm open-end wrench
- Phillips screwdriver
- 5/16" nut driver

### PARTS

Verify that all parts are accounted for (either Fuel Tank Kit A or B, depending on what you are installing). See Figure 1 and Table 1.



**Figure 1. Fuel Tank Kits**

**Table 1. Fuel Tank Kits**

| Item No. | Part No.      | Description   | QTY. | Remarks                       |
|----------|---------------|---|------|-------------------------------|
| A        | 366910041KIT2 | Kit, Fuel Tank (for units with diaphragm carburetor, <b>without</b> primer pump) See Table 2 for serial numbers affected. | 1    | Includes items 1, 3-7, and 13 |
| B        | 366910041KIT  | Kit, Fuel Tank (for units with diaphragm carburetor, <b>with</b> primer pump) See Table 2 for serial numbers affected.    | 1    | Includes items 2, 3-7, and 13 |
| 1        | 366900180     | Diaphragm Cab Kit/EVP   | 1    | Includes items 14 and 16-19   |
| 2        | 366900090     | Primer Pump Kit/EVP   | 1    | Includes items 15 and 16-21   |
| 3        | 366910041     | Fuel Tank CP with decal, OP   | 1    |                               |
| 4        | 366900110     | 3-3/4" Fuel Hose/EVP L90  | 1    |                               |
| 5        | 366350460     | Cap Assy  | 1    |                               |
| 6        | 920214100     | Decal, E/G Fire Warning   | 1    |                               |
| 7        | 366900100     | Attach Kit (B & W Tank)   | 1    | Includes Items 8-12           |
| 8        | 022710809     | Nylon Nut M8  | 3    |                               |
| 9        | 001220825     | Bolt 8X25 T   | 3    |                               |
| 10       | 030208200     | Washer, Lock M8   | 3    |                               |
| 11       | 031108160     | Washer, Flat M8   | 4    |                               |
| 12       | 952401450     | Washer, 8.5X22X3  | 2    |                               |
| 13       | 366910041INST | Instructions, Fuel Tank Update  | 1    |                               |
| 14       | —             | Strainer Holder (A)   | 1    |                               |
| 15       | —             | Strainer Holder (B)   | 1    |                               |
| 16       | —             | Strainer  | 1    |                               |
| 17       | —             | Packing   | 1    |                               |
| 18       | —             | Bolt  | 3    |                               |
| 19       | —             | Lockwasher  | 3    |                               |
| 20       | —             | 24" Fuel Hose   | 1    |                               |
| 21       | —             | Spiral Tube   | 1    |                               |

**Table 2. Serial Numbers Affected**

| Kit | Type   | Model | Serial Numbers |
|-----|--|-------|----------------|
| A   | Diaphragm Carburetor without primer pump<br>(Use Kit Part No. 366910041KIT2) | MTX60 | up to T3423    |
|     |  | MTX70 | up to T3362    |
|     |  | MTX80 | up to T4504    |
|     |  | MTX90 | up to U1346    |
| B   | Diaphragm Carburetor with primer pump<br>(Use Kit Part No. 366910041KIT)     | MTX60 | T3424 to V8866 |
|     |  | MTX70 | T3363 to V9712 |
|     |  | MTX80 | T4505 to V6029 |
|     |  | MTX90 | U1347 to V1521 |

## WORK SAFELY!

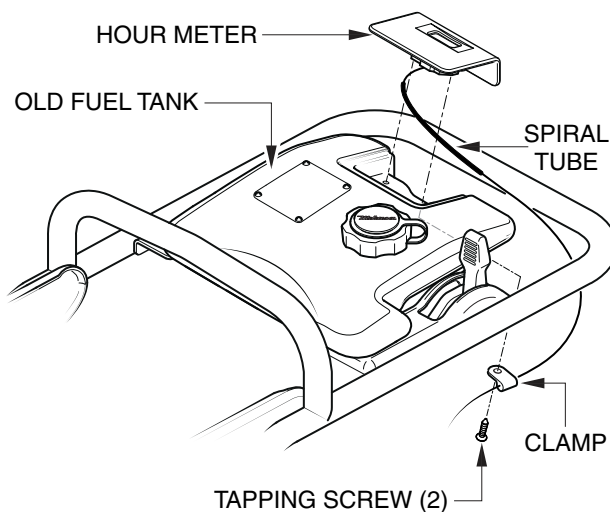
Only a **qualified service technician** with proper training should perform this installation. Follow all shop safety rules when performing this installation.

### NOTICE

The following tank replacement procedure applies to both kits (366910041KIT2 or 366910041KIT) unless otherwise noted.

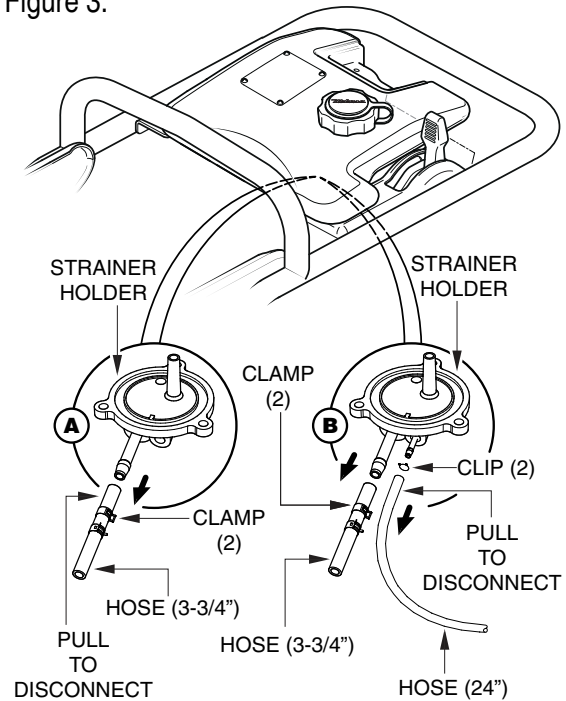
## OLD FUEL TANK REMOVAL

1. On the rammer, remove the 2 tapping screws under the hourmeter holder (Figure 2). Keep the screws as they will be used to reinstall the hourmeter holder later in the procedure. The hourmeter holder will be dangling. Prop it up where it is out of the way for the installation of the new fuel tank.



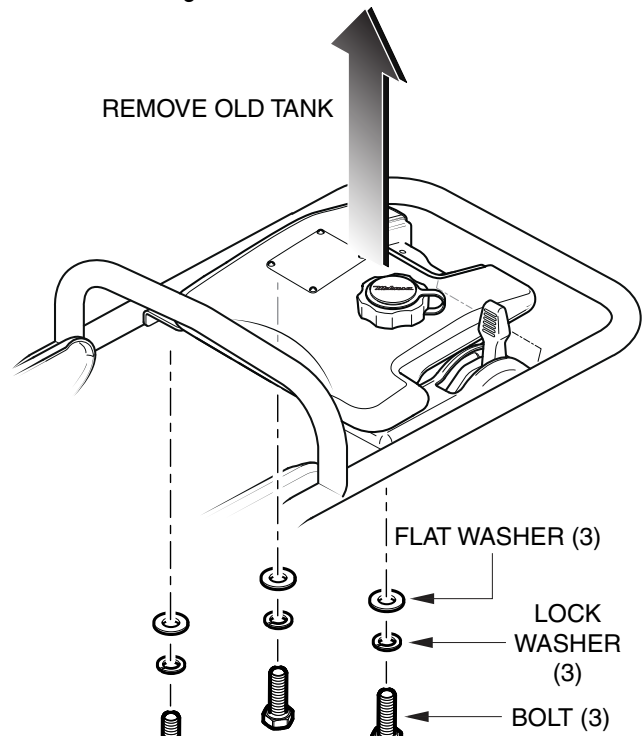
**Figure 2. Hour Meter Removal**

2. Remove the clamp holding the fuel line hose (for kit 366910041KIT2) or the 2 clamps holding the fuel line hoses (for kit 366910041KIT) and squeeze and pull out the hose(s) from the tank to disconnect. See Figure 3.



**Figure 3. Hose Disconnection**

3. Remove the 3 screws and flat washers under the fuel tank. See Figure 4.



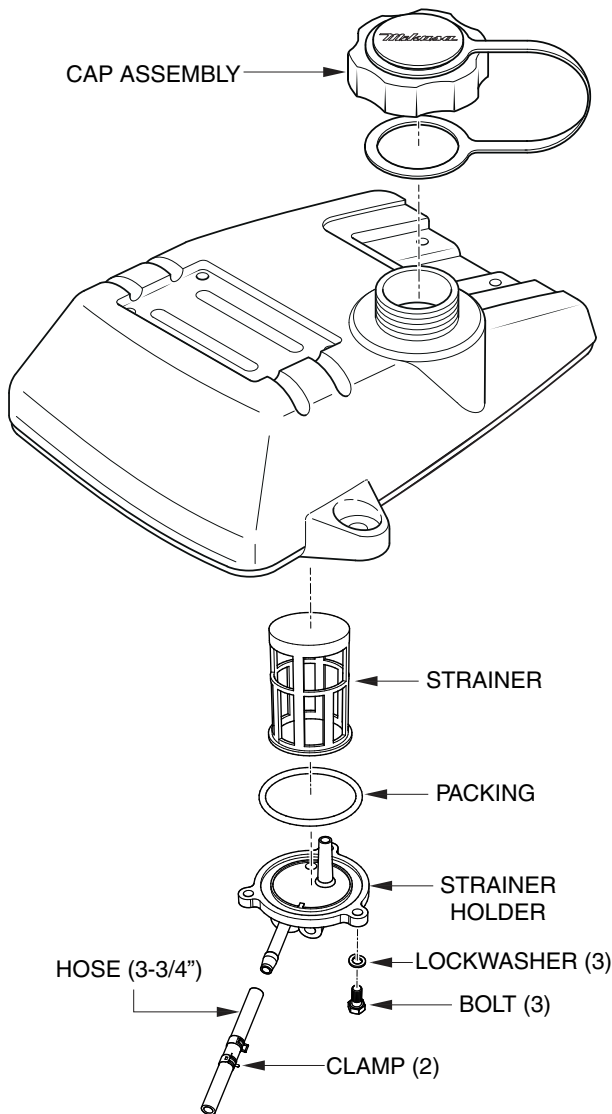
**Figure 4. Old Fuel Tank Removal**

4. Remove the fuel tank from the rammer.

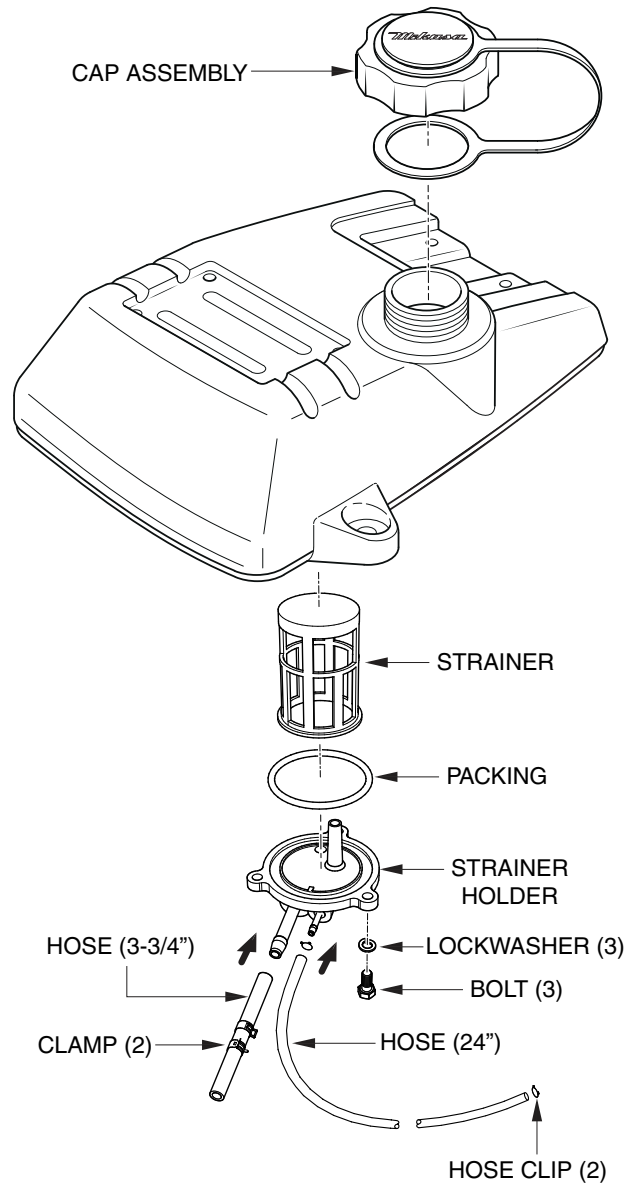
## NEW FUEL TANK PREPARATION

For Kit A (366910041KIT2), refer to Figure 5. For Kit B (366910041KIT), refer to Figure 6.

1. On the new tank, install the strainer.
2. Install the packing on the strainer holder and install the strainer holder on the fuel tank using the 3 nuts and lockwashers.
3. Install the cap on the new fuel tank.
4. Connect the hose(s) to the strainer holder.



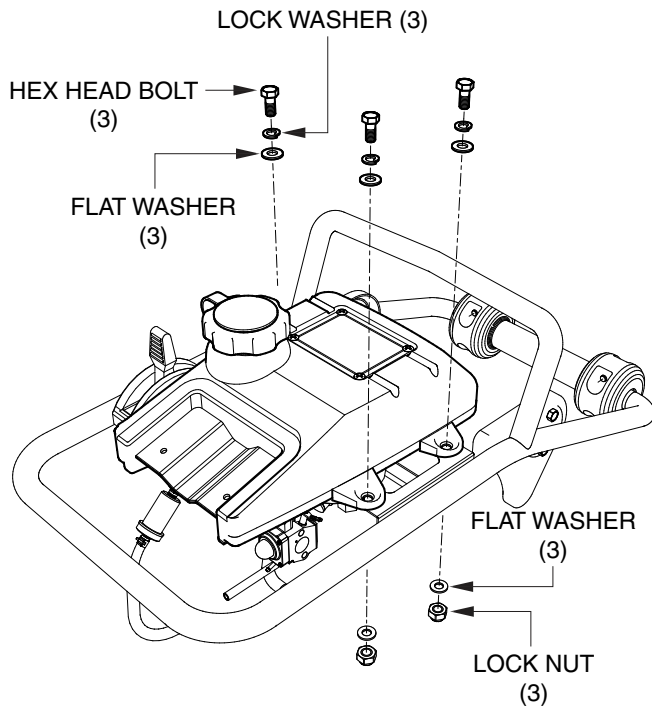
**Figure 5. New Fuel Tank Preparation  
(Kit A - 366910041KIT2)**



**Figure 6. New Tank Preparation  
(Kit B- 366910041KIT)**

## NEW TANK INSTALLATION

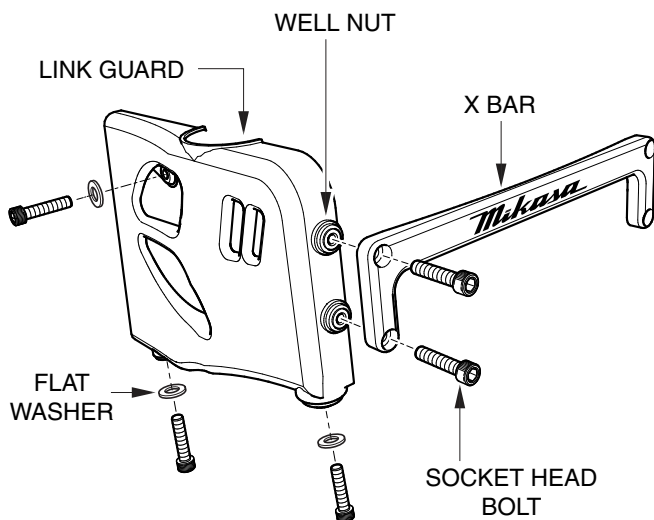
1. Install the new tank using the 3 sets of bolts, nuts, and lockwashers in the Attach Kit that comes with the Fuel Tank Kit.



**Figure 7. New Fuel Tank Installation**

## HOSE REPLACEMENT

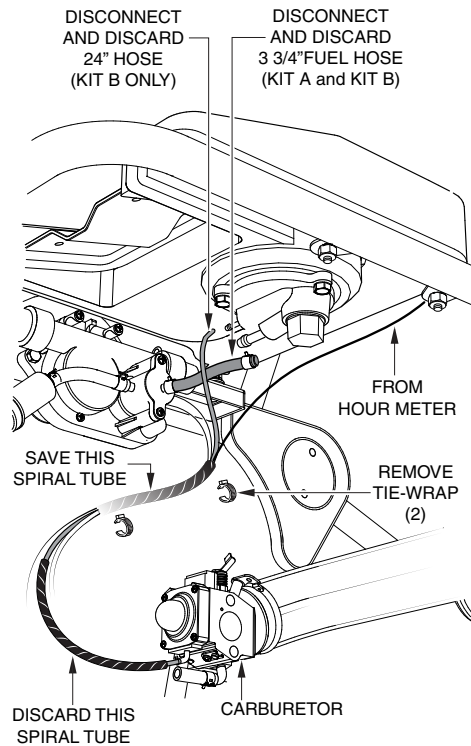
1. Remove the side cover (link guard) of the engine to gain access to the hoses.



**Figure 8. Side Cover Removal**

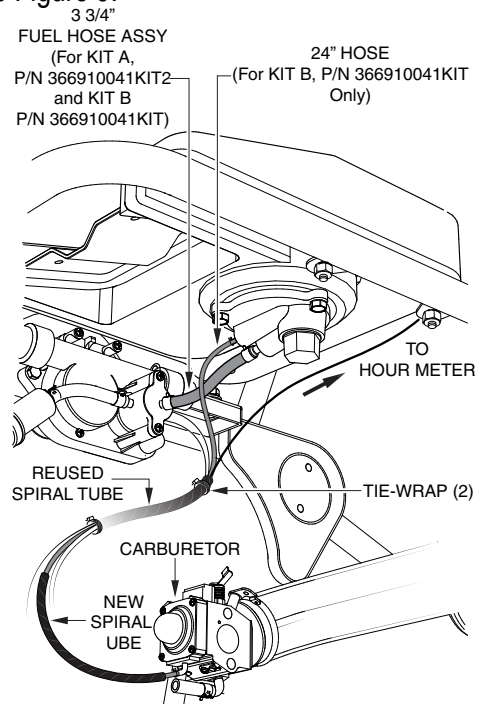
## For Kit A - Part Number 366910041KIT2:

1. Remove and discard the existing 3-3/4" hose. See Figure 9.



**Figure 9. Hose Removal**

2. Replace with 3-3/4" hose (Part Number 366900110). See Figure 9.



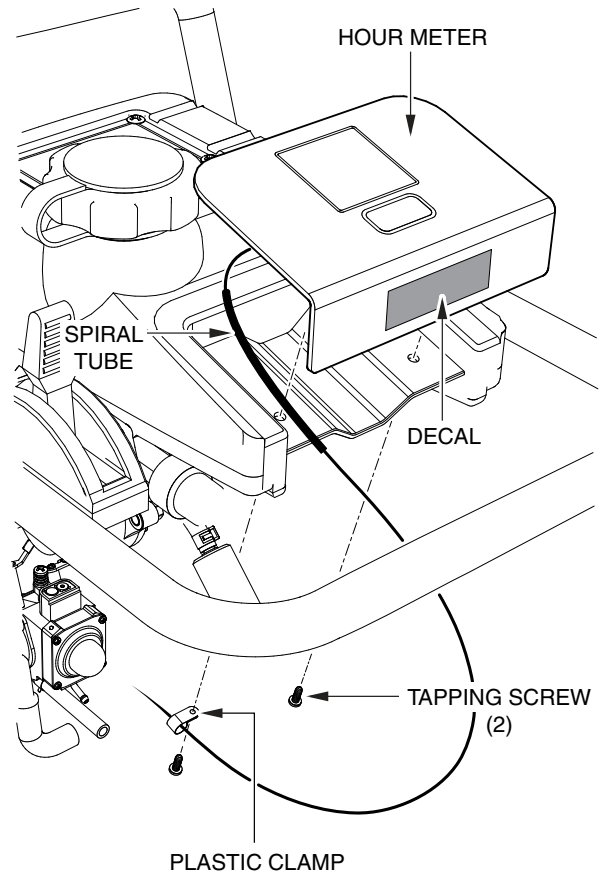
**Figure 10. Hose Replacement**

### For Kit B - Part Number 366910041KIT:

1. Remove and discard the existing 3-3/4" hose (Part Number 366900110). See Figure 9.
2. Replace with 3-3/4" hose (Part Number 366900110). See Figure 10.
3. Install spiral tube on the 24" hose (comes with the Primer Pump Kit).
4. The existing 24" hose on the rammer is tie-wrapped with other wires. Cut tie-wrap and remove spiral tube covering the wires. Keep spiral tube.
5. Remove and discard 24" hose, including spiral tube around it. See Figure 9.
6. Replace 24" hose with the hose in step 3. See Figure 10.
7. Reinstall the old spiral tube over the wires and hose and then secure with tie-wraps.
8. Reinstall the side cover.

### HOURLY METER/DECAL INSTALLATION

1. Reinstall the hourmeter holder, with the 2 screws previously removed, to the new fuel tank. See Figure 11.
2. Place the fire warning decal (P/N 920214100) as shown in Figure 11, if not previously installed.



**Figure 11. Hour Meter Installation**



## MTX Series

### Fuel Tank Update

# HERE'S HOW TO GET HELP

PLEASE HAVE THE MODEL AND SERIAL  
NUMBER ON-HAND WHEN CALLING

#### UNITED STATES

##### ***Multiquip Corporate Office***

18910 Wilmington Ave. Tel. (800) 421-1244  
Carson, CA 90746 Fax (310) 537-3927  
Contact: mq@multiquip.com

##### ***Service Department***

800-421-1244 Fax: 310-537-4259  
310-537-3700

##### ***Technical Assistance***

800-478-1244 Fax: 310-943-2238

##### ***MQ Parts Department***

800-427-1244 Fax: 800-672-7877  
310-537-3700 Fax: 310-637-3284

##### ***Warranty Department***

800-421-1244 Fax: 310-943-2249  
310-537-3700

#### MEXICO

##### ***MQ Cipsa***

Carr. Fed. Mexico-Puebla KM 126.5 Tel: (52) 222-225-9900  
Momoxpan, Cholula, Puebla 72760 Mexico Fax: (52) 222-285-0420  
Contact: pmastretta@cipsa.com.mx

#### CANADA

##### ***Multiquip***

4110 Industriel Boul. Tel: (450) 625-2244  
Laval, Quebec, Canada H7L 6V3 Tel: (877) 963-4411  
Contact: jmartin@multiquip.com Fax: (450) 625-8664

#### UNITED KINGDOM

##### ***Multiquip (UK) Limited Head Office***

Unit 2, Northpoint Industrial Estate, Tel: 0161 339 2223  
Globe Lane, Fax: 0161 339 3226  
Dukinfield, Cheshire SK16 4UJ  
Contact: sales@multiquip.co.uk

© COPYRIGHT 2013, MULTIQUIP INC.

Multiquip Inc and the MQ logo are registered trademarks of Multiquip Inc. and may not be used, reproduced, or altered without written permission. All other trademarks are the property of their respective owners and used with permission.

The information and specifications included in this publication were in effect at the time of approval for printing. Illustrations, descriptions, references and technical data contained in this document are for guidance only and may not be considered as binding. Multiquip Inc. reserves the right to discontinue or change specifications, design or the information published in this publication at any time without notice and without incurring any obligations.

Your Local Dealer is:

