

PARTS MANUAL



Mikasa SERIES
MODEL MTX-i60
TAMPING RAMMER
(BOB10 RECHARGEABLE BATTERY)

Revision #0 (11/22/24)

To find the latest revision of this publication or associated operation manual, visit our website at: www.multiquip.com



THIS MANUAL MUST ACCOMPANY THE EQUIPMENT AT ALL TIMES.

**MTX-i60
Rammer**

Explanation Of Code In Remarks Column..... 4
Suggested Spare Parts 5

Component Drawings

Nameplates And Decals 6-7
Crank Case And Motor Assembly.....8-11
Handle Converter Assembly 12-13
Battery And Charger Assembly..... 14-15
Spring Cylinder, Guide Cylinder Assembly 16-17
Foot Assembly 18-19

NOTICE
Part numbers are subject to change without notice.

EXPLANATION OF CODE IN REMARKS COLUMN

The following section explains the different symbols and remarks used in the Parts section of this manual. Use the help numbers found on the back page of the manual if there are any questions.

NOTICE

The contents and part numbers listed in the parts section are subject to change without notice. Multiquip does not guarantee the availability of the parts listed.

SAMPLE PARTS LIST

NO.	PART NO.	PART NAME	QTY.	REMARKS
1	12345	BOLT	1	INCLUDES ITEMS W/%
2%		WASHER, 1/4 IN.		NOT SOLD SEPARATELY
2%	12347	WASHER, 3/8 IN. ..1		MQ-45T ONLY
3	12348	HOSE	A/R	MAKE LOCALLY
4	12349	BEARING	1	S/N 2345B AND ABOVE

NO. Column

Unique Symbols — All items with same unique symbol (@, #, +, %, or >) in the number column belong to the same assembly or kit, which is indicated by a note in the “Remarks” column.

Duplicate Item Numbers — Duplicate numbers indicate multiple part numbers, which are in effect for the same general item, such as different size saw blade guards in use or a part that has been updated on newer versions of the same machine.

NOTICE

When ordering a part that has more than one item number listed, check the remarks column for help in determining the proper part to order.

PART NO. Column

Numbers Used — Part numbers can be indicated by a number, a blank entry, or TBD.

TBD (To Be Determined) is generally used to show a part that has not been assigned a formal part number at the time of publication.

A blank entry generally indicates that the item is not sold separately or is not sold by Multiquip. Other entries will be clarified in the “Remarks” Column.

QTY. Column

Numbers Used — Item quantity can be indicated by a number, a blank entry, or A/R.

A/R (As Required) is generally used for hoses or other parts that are sold in bulk and cut to length.

A blank entry generally indicates that the item is not sold separately. Other entries will be clarified in the “Remarks” Column.

REMARKS Column

Some of the most common notes found in the “Remarks” Column are listed below. Other additional notes needed to describe the item can also be shown.

Assembly/Kit — All items on the parts list with the same unique symbol will be included when this item is purchased.

Indicated by:

“INCLUDES ITEMS W/(unique symbol)”

Serial Number Break — Used to list an effective serial number range where a particular part is used.

Indicated by:

“S/N XXXXX AND BELOW”

“S/N XXXX AND ABOVE”

“S/N XXXX TO S/N XXX”

Specific Model Number Use — Indicates that the part is used only with the specific model number or model number variant listed. It can also be used to show a part is NOT used on a specific model or model number variant.

Indicated by:

“XXXXX ONLY”

“NOT USED ON XXXX”

“Make/Obtain Locally” — Indicates that the part can be purchased at any hardware shop or made out of available items. Examples include battery cables, shims, and certain washers and nuts.

“Not Sold Separately” — Indicates that an item cannot be purchased as a separate item and is either part of an assembly/kit that can be purchased, or is not available for sale through Multiquip.

SUGGESTED SPARE PARTS

MTX-i60 TAMPING RAMMER WITH BOB10 RECHARGEABLE BATTERY

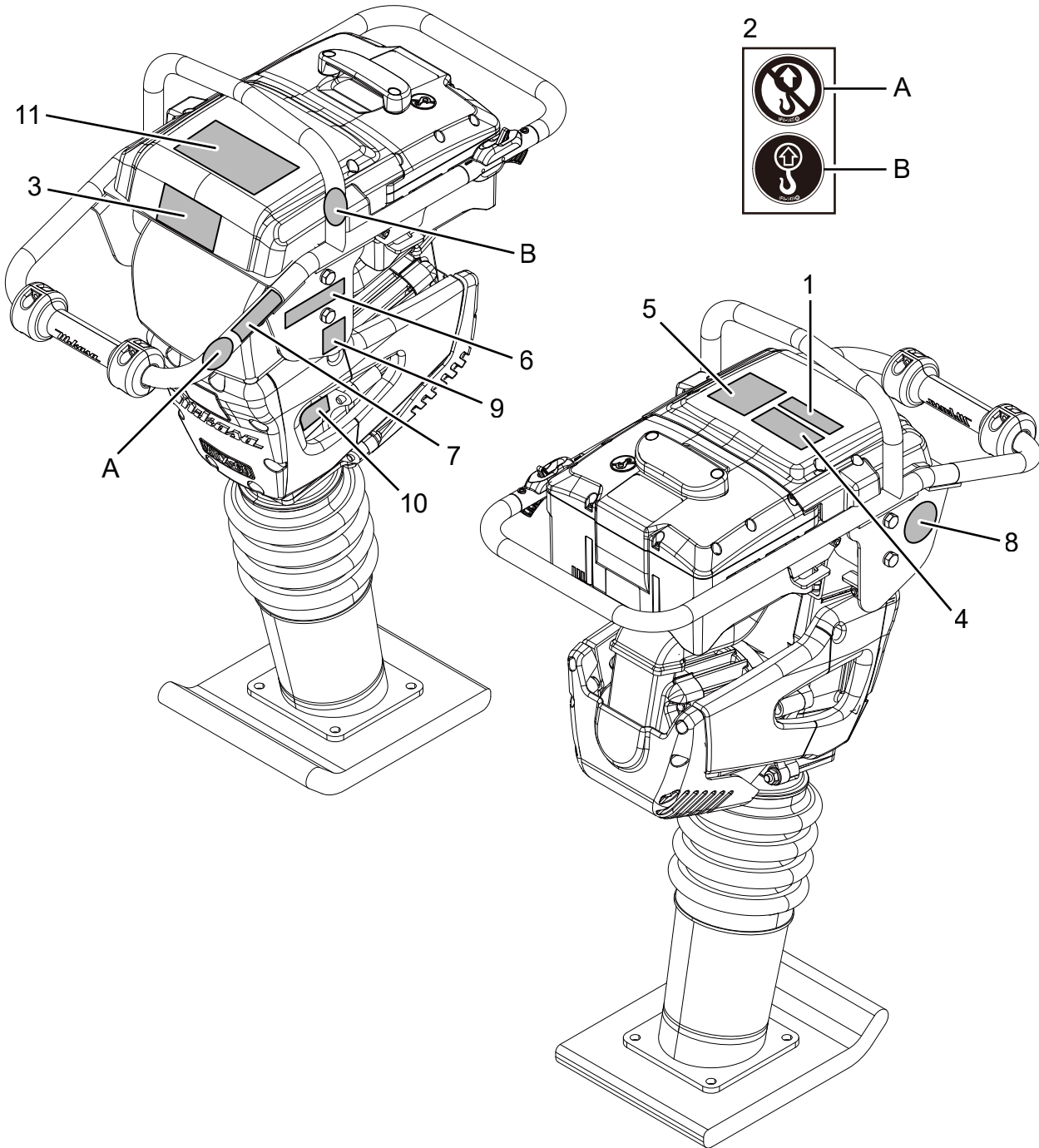
1 to 3 units

Qty.	P/N	Description
2	368347520	CLAMP, BELLOWS 131D
1	368346180	BELLOWS, ORANGE
1	5100045607	CLUTCH
4	5100064274	BELLOWS, MOTOR
2	060404010	OIL SEAL, TC-40528
2	040006304	BEARING, 6304-C3
2	040006305	BEARING, 6305C3
2	042506203	BEARING, 6203ZZ
2	366346270	SHOCK ABSORBER W/PIN
1	BOB10	LIT-ION BATTERY, RECHARGEABLE
1	BOC13	CHARGER, BATTERY

NOTICE

Part numbers on this Suggested Spare Parts list may supersede/replace the part numbers shown in the following parts lists.

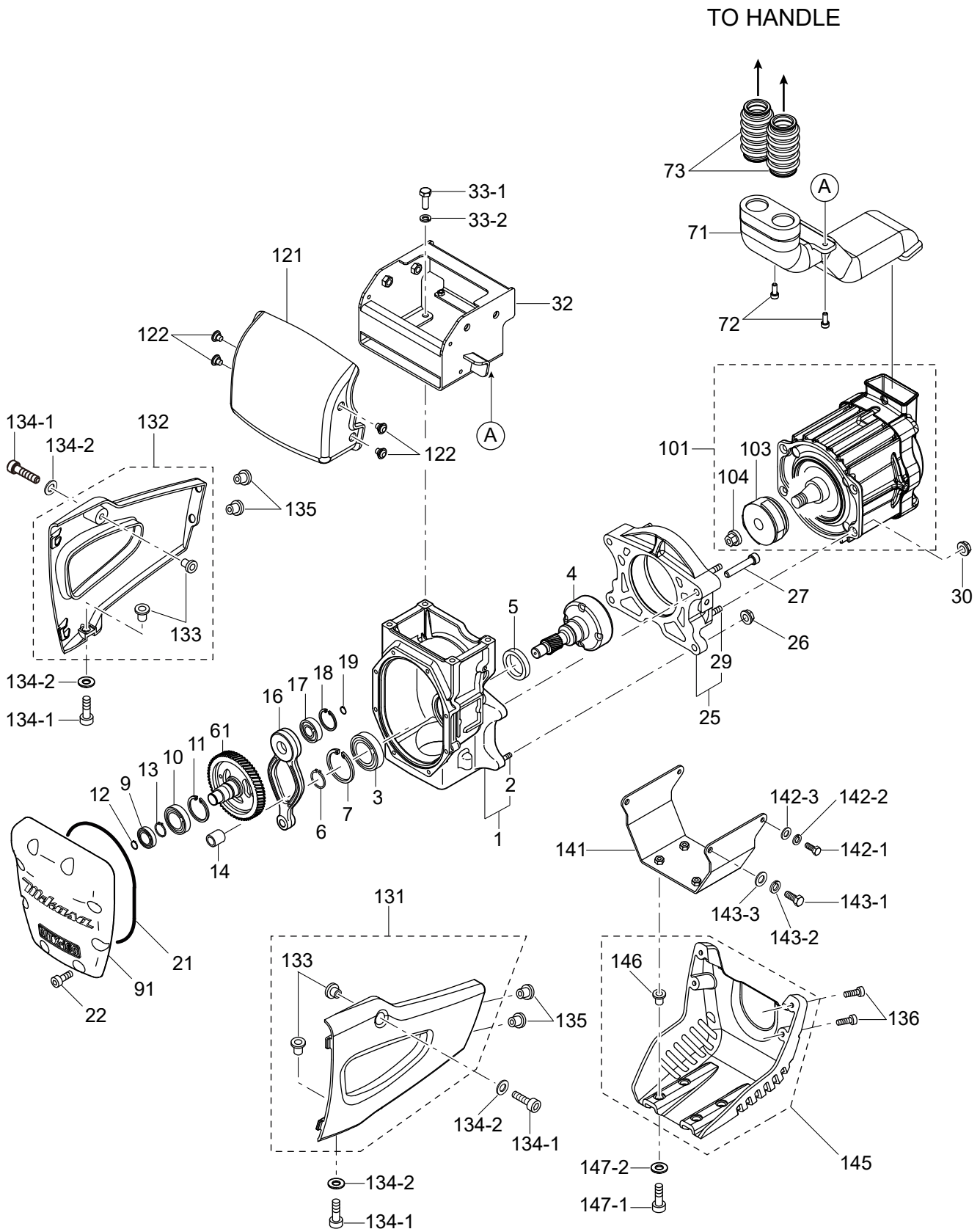
NAMEPLATES AND DECALS



NAMEPLATES AND DECALS

<u>NO.</u>	<u>PART NO.</u>	<u>PART NAME</u>	<u>QTY.</u>	<u>REMARKS</u>
1	920210870	DECAL, CAUTION	1	
2	920900180	DECAL SET, LIFT/NO LIFT	1	
3	920225970	DECAL, SMART-i_96X54	1	
4	920224540	DECAL, CAUTION/COMBI/e55	1	
5	920225920	DECAL, OPERATION/MTXi60	1	
6	920224760	DECAL, CAUTION WASH AND DRY/EX	1	
7	920222240	DECAL, PROPOSITION 65	1	
8	920224750	DECAL, MQ, 3 YEARS WARRANTY	1	
9	920210310	DECAL, EC NOISE REQ. LWA107	1	
10	920225900	PLATE, SERIAL NO/MTX-i60/MQ	1	
11	920226070	DECAL, MQ_ZERO	1	

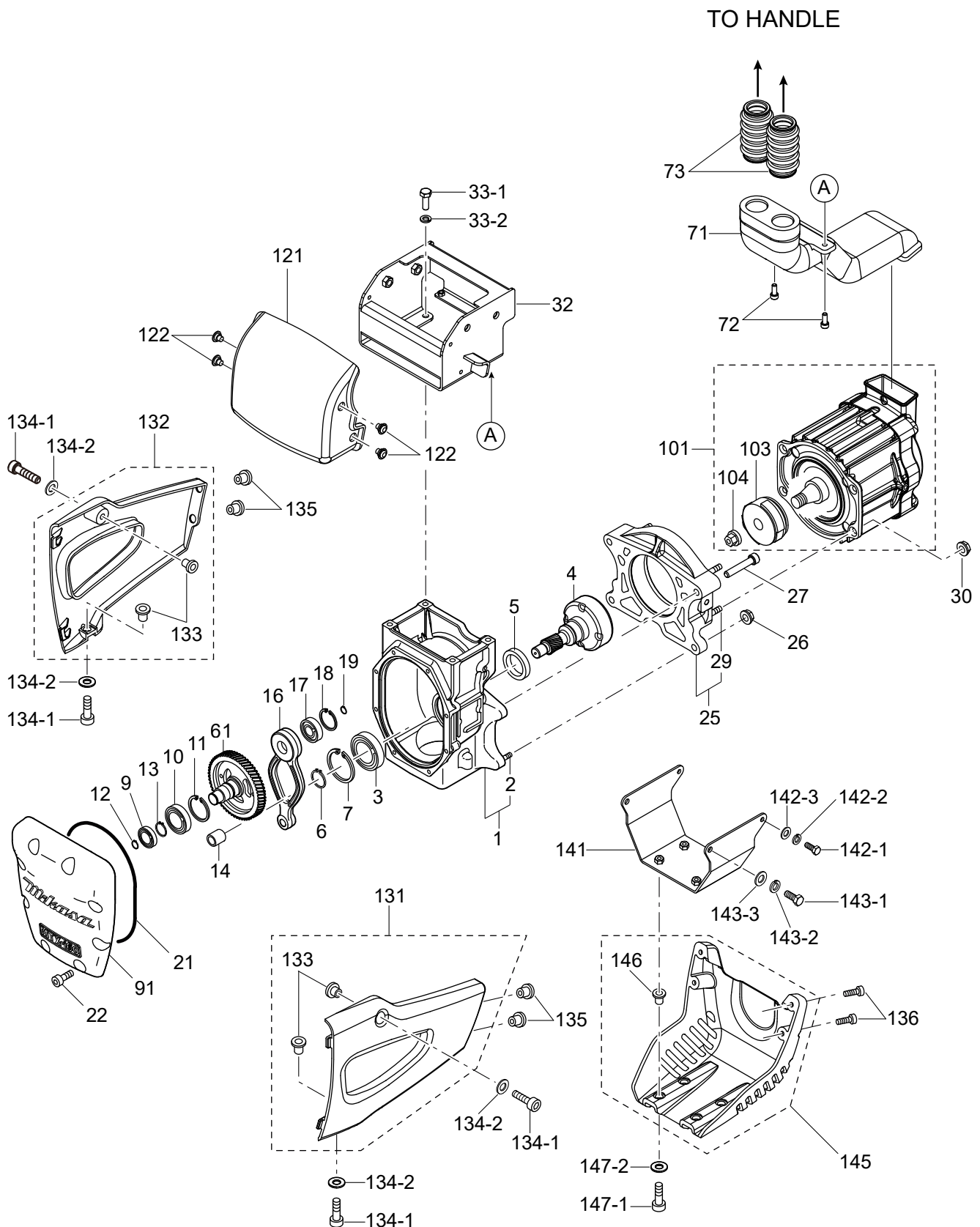
CRANK CASE AND MOTOR ASSY.



CRANK CASE AND MOTOR ASSY.

<u>NO.</u>	<u>PART NO.</u>	<u>PART NAME</u>	<u>QTY.</u>	<u>REMARKS</u>
1	379910010	CRANK CASE CP	1	
2	009120204	STUD BOLT, 10X50X21T/21S	2	
3	041006007	BEARING, 6007ZEC3	1	
4	379359220	DRUM, PINION	1	
5	060404010	OIL SEAL, TC-40528	1	
6	080200350	STOP RING, S-35	1	
7	080100620	STOP RING, R-62	1	
9	042506203	BEARING, 6203ZZ	1	REPLACES P/N 040006203
10	040006305	BEARING, 6305C3	1	
11	080100620	STOP RING, R-62	1	
12	080200170	STOP RING, S-17	1	
13	JISB2804C25	STOP RING, S-25	1	REPLACES P/N 080200250
14	047940060	NEEDLE BEARING	1	
16	368347250	ROD, CONNECTING	1	
17	040006304	BEARING, 6304-C3	1	
18	080100520	STOP RING, R-52	1	
19	080200200	STOP RING, S-20	1	
21	050710100	O-RING	1	
22	014208025	SOCKET HEAD BOLT, 8X25	8	REPLACES P/N 009110025
25	379910020	MOTOR FLANGE CP	1	
26	022611010	FLANGE NUT, M10 H	2	
27	009110109	SOCKET HEAD BOLT, 10X50 ZN	2	
29	959409790	SOCKET HEAD SCREW, 8X50 (8.8)	4	
30	022910300	FLANGE NUT, M8 (7.5H)	4	
32	379220840	BRACKET, SHOCK ABSORBER	1	
33-1	012010030	SCREW, HEX FLAT 10X30	4	REPLACES P/N 001221030
33-2	030210250	WASHER, LOCK M10 ZINC	4	
61	379359210	CRANK GEAR	1	
71	5100071916	AIR DUCT, MOTOR	1	
72	009110064	SOCKET HEAD BOLT, 6X20 ZN	2	
73	5100064274	BELLOWS, MOTOR	2	
91	368010400	FRONT COVER	1	
91	368010390	FRONT COVER	1	
101	918712201	MOTOR ASSEMBLY	1	INCLUDES ITEMS W/\$
103\$	5100045607	CLUTCH	1	
104\$	5000010367	NYLON NUT, M8	1	
121	379359240	COVER, BRACKET	1	
122	009110890	FLANGE BOLT, SGK 8X10	4	
131	379123440	COVER (L), MOTOR	1	INCLUDES ITEM W/%
132	379123450	COVER (R), MOTOR	1	INCLUDES ITEM W/#
133#%	366461050	COLLAR/GUARD	4	
134-1	014208020	BOLT, SOCKET HEAD, 8X20	4	REPLACES P/N 001520820
134-2	033910220	WASHER, 8.4X15.5X1.6	4	
135	022910250	WELL NUT, M6	4	

CRANK CASE AND MOTOR ASSY. (CONT'D.)

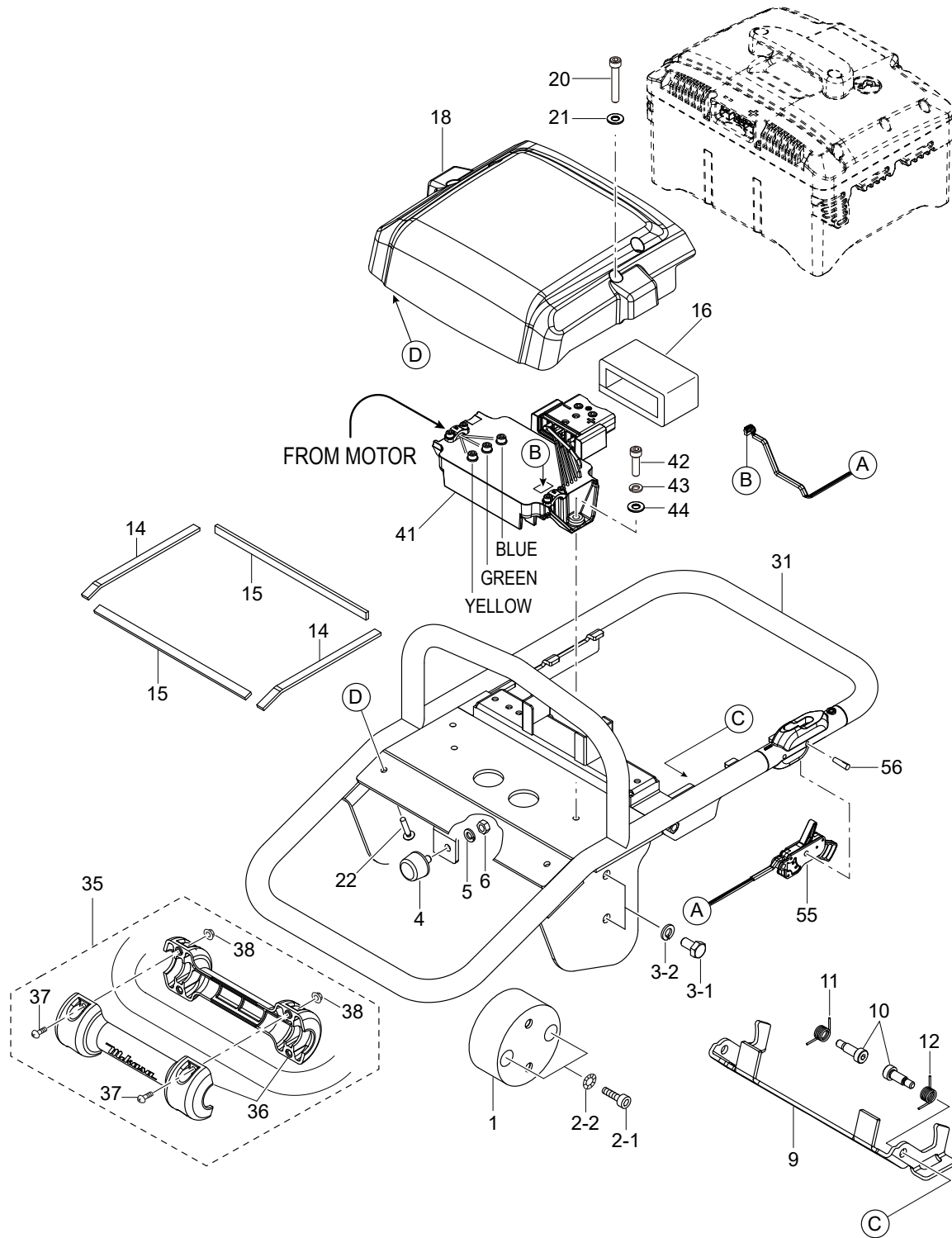


CRANK CASE AND MOTOR ASSY. (CONT'D.)

<u>NO.</u>	<u>PART NO.</u>	<u>PART NAME</u>	<u>QTY.</u>	<u>REMARKS</u>
136	009110039	SOCKET HEAD BOLT, 6X25 ZN	4	
141	379359250	BRACKET, UNDER COVER	1	
142-1	011206020	SCREW, HEX HD. 6X20	2.....	REPLACES P/N 001220620
142-2	030206150	WASHER, LOCK M6	2	
142-3	952404470	WASHER, FLAT M6.....	2.....	REPLACES P/N 031106100
143-1	001220820	BOLT, HEX. 8X20	2	
143-2	030208200	WASHER, LOCK M8	2	
143-3	0401450080	WASHER, FLAT M8.....	2.....	REPLACES P/N 031108160
145	379123470	UNDER COVER	1.....	INCLUDES ITEM W/*
146*	366461050	COLLAR/GUARD	4	
147-1	014208025	SOCKET HEAD BOLT, 8X25	4.....	REPLACES P/N 009110025
147-2	033910220	WASHER, 8.4X15.5X1.6	4	

HANDLE CONVERTER ASSY.

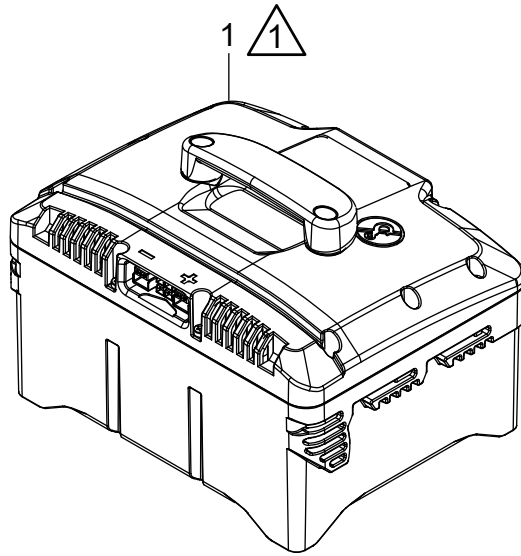
BATTERY AND CHARGER ARE HANDLED AS PRODUCT.




HANDLE CONVERTER ASSY.

<u>NO.</u>	<u>PART NO.</u>	<u>PART NAME</u>	<u>QTY.</u>	<u>REMARKS</u>
1	366346270	SHOCK ABSORBER W/ PIN	2	
2-1	014210020	SCREW, SOCKET HEAD CAP 10X20	4	REPLACES P/N 001521020
2-2	033121009	WASHER, TOOTHED LOCK B M10	4	
3-1	012210020	BOLT, 10X20.....	4	REPLACES P/N 001221020
3-2	030210250	WASHER, LOCK M10	4	
4	939010270	STOPPER RUBBER (70)	2	
5	030208200	WASHER, LOCK M8	2	
6	020108060	NUT, HEX M8.....	2	REPLACES P/N 020308060
9	424359330	LOCK PLATE	1	
10	379476020	SHOULDER BOLT, LOCK PLATE	2	
11	424476130	TORSION SPRING (R)	1	
12	424476140	TORSION SPRING (L)	1	
14	379476000	AIR SEAL 190	2	
15	379476010	AIR SEAL 240	2	
16	5100064272	CUSHION, BATTERY PLUG	1	
18	379123460	TOP COVER	1	
20	009110145	SOCKET HEAD BOLT, 6X45 T/ZN	4	
21	952404470	WASHER, FLAT M6.....	4	REPLACES P/N 031106100
22	009110144	TRUSS TAPTITE (+) B-TYPE, 5X16	2	
31	379123480	HANDLE	1	
35	366910030	ROLLER ASSEMBLY, W/ SCREW	1	INCLUDES ITEMS W/\$
36\$	366217170	ROLLER	2	
37\$	0017105020	SCREW, 5X20	4	REPLACES P/N 091005020
38\$	022610505	NUT, FLANGE M5 H	4	
41	5100062998	CONVERTER ASSEMBLY (150Hz)	1	
42	009110039	SOCKET HEAD BOLT 6X25 ZN	2	
43	030206150	WASHER, LOCK M6	2	
44	952404470	WASHER, FLAT M6	2	REPLACES P/N 031106100
55	5100070451	LEVER SWITCH, ON-OFF	1	
56	009110143	PIN B-TYPE, 5X24	2	

BATTERY AND CHARGER ASSY.



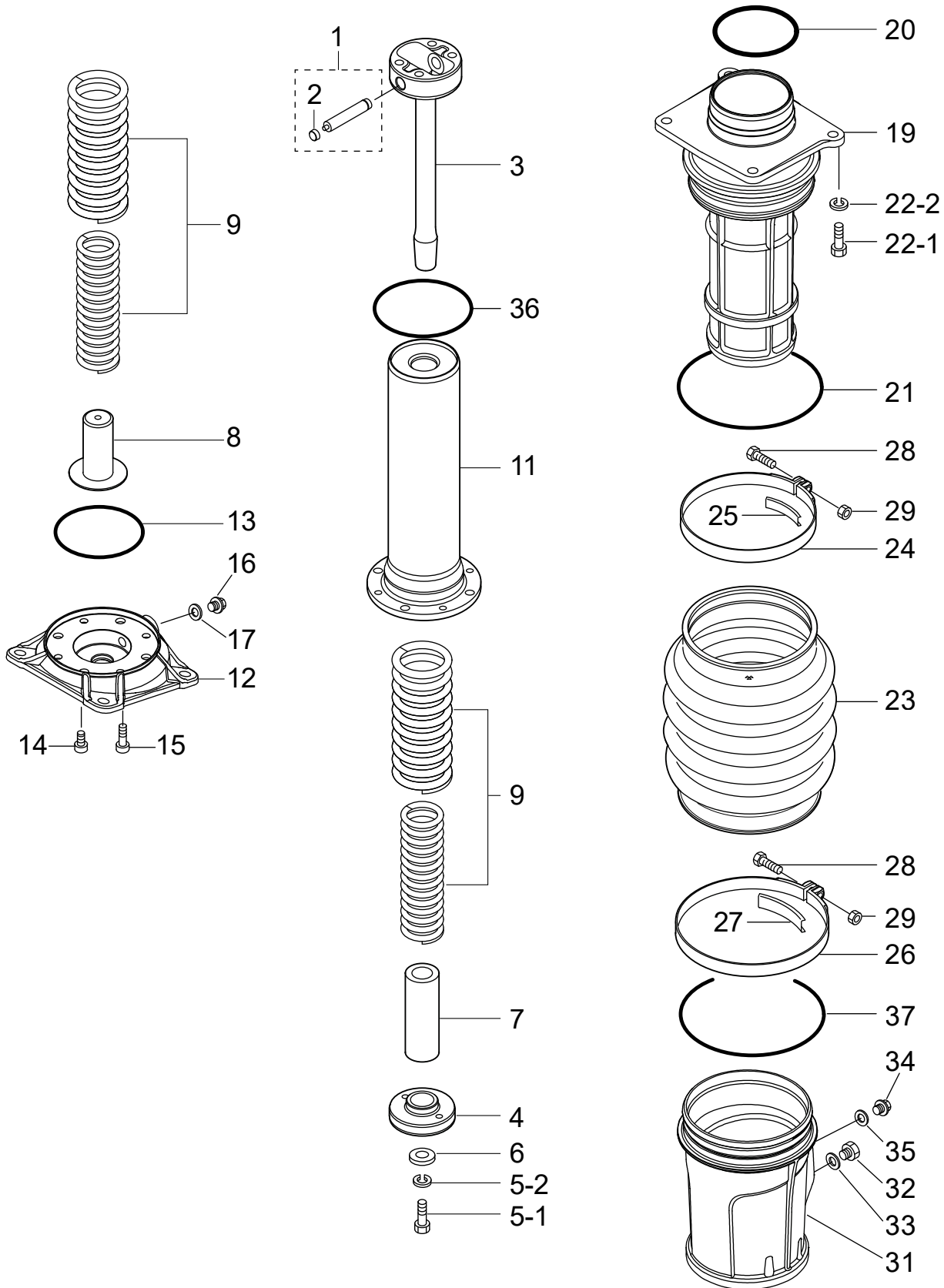
NOTES:

 FOR ITEM 1 AND ITEM 2 CALL
MQ SALES DEPT.

BATTERY AND CHARGER ASSY.

<u>NO.</u>	<u>PART NO.</u>	<u>PART NAME</u>	<u>QTY.</u>	<u>REMARKS</u>
1	BOB10	LIT-ION BATTERY, RECHARGEABLE	1	CALL MQ SALES DEPT.
2	BOC13	CHARGER, BATTERY	1	CALL MQ SALES DEPT.

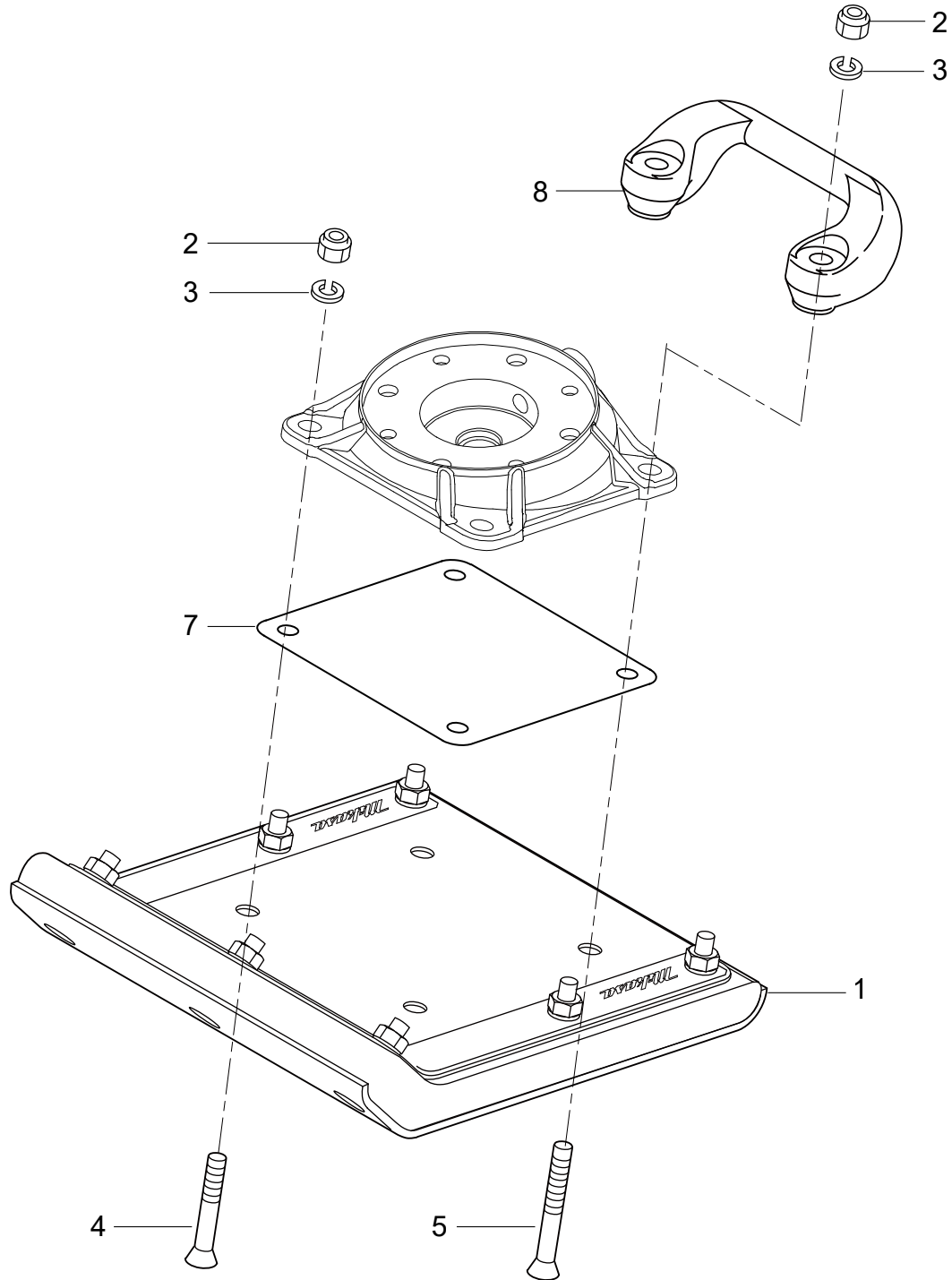
SPRING CYLINDER, GUIDE CYLINDER ASSY.



SPRING CYLINDER, GUIDE CYLINDER ASSY.

<u>NO.</u>	<u>PART NO.</u>	<u>PART NAME</u>	<u>QTY.</u>	<u>REMARKS</u>
1	368910020	PISTON PIN ASSEMBLY W/ PLUG.....	1.....	INCLUDES ITEM W/%
2%	368459920	PLUG, PISTON PIN	2	
3	368347290	ROD, PISTON	1	
4	368461160	PISTON END	1	
5-1	001121230	BOLT, 12X30	1	
5-2	030212300	WASHER, LOCK M12	1	
6	952404790	WASHER	1	
7	368461261	STOPPER, LOWER	1	
8	368461200	STOPPER, BOTTOM	1	
9	368461270	MAIN SPRING	2	
11	368347281	SPRING CYLINDER	1	
12	379220950	PLATE, FOOT	1	
13	050100800	O-RING, G-80	1	
14	014210020	SOCKET HEAD CAP SCREW, 10X20	4.....	REPLACES P/N 001521020
15	009110100	SOCKET HEAD BOLT, 8X35 ZN	4	
16	953405270	PLUG, 1/4X14 13L	1	
17	953405260	PACKING, 1/4	1	
19	368217720	GUIDE CYLINDER	1	
20	050100850	O-RING, G-85	1	
21	050101150	O-RING, G-115	1	
22-1	012210035	BOLT, 10X35.....	4.....	REPLACES P/N 001221035
22-2	030210250	WASHER, LOCK M10	4	
23	368346180	BELLOWS, ORANGE	1	
24	368347520	CLAMP, BELLOWS 131D	1	
25	368461400	GUIDE, BAND 131D	1	
26	368347530	CLAMP, BELLOWS 149D	1	
27	368461410	GUIDE, BAND 149D	1	
28	011008040	BOLT, 8X40.....	2.....	REPLACES P/N 001220840
29	020108060	NUT, HEX, M8.....	2.....	REPLACES P/N 020308060
31	368118970	SLEEVE, PROTECTION	1	
32	366460300	OIL GAUGE ASSEMBLY	1	
33	953404670	GASKET, COPPER 17X25.5X1	1	
34	953405270	PLUG 1/4X14 13L	1	
35	953405260	PACKING, 1/4	1	
36	050200800	O-RING, P-80	1	
37	050101300	O-RING, G-130	1	

FOOT ASSY.



FOOT ASSY.

<u>NO.</u>	<u>PART NO.</u>	<u>PART NAME</u>	<u>QTY.</u>	<u>REMARKS</u>
1	362910240	FOOT ASSEMBLY 265W, M4B	1	
2	021112140	NUT, NYLON LOCK M12/ZN	4	REPLACES P/N 022711214
3	030212300	WASHER, LOCK M12	4	
4	009110034	BOLT, SQUARE NECK 12X65	2	
5	009110035	BOLT, SQUARE NECK 12X95	2	
7	368347460	COVER, FOOT	1	
8	363343390	GRIP HANDLEBAR, FOOT	1	

PARTS MANUAL

HERE'S HOW TO GET HELP

PLEASE HAVE THE MODEL AND SERIAL
NUMBER ON-HAND WHEN CALLING

UNITED STATES

Multiquip Inc.

(310) 537- 3700
6141 Katella Avenue Suite 200
Cypress, CA 90630
E-MAIL: mq@multiquip.com
WEBSITE: www.multiquip.com

CANADA

Multiquip

(450) 625-2244
4110 Industriel Boul.
Laval, Quebec, Canada H7L 6V3
E-MAIL: infocanada@multiquip.com

UNITED KINGDOM

Multiquip (UK) Limited Head Office

0161 339 2223
Unit 2, Northpoint Industrial Estate,
Globe Lane,
Dukinfield, Cheshire SK16 4UJ
E-MAIL: sales@multiquip.co.uk

© COPYRIGHT 2024, MULTIQUIP INC.

Multiquip Inc, the MQ logo are registered trademarks of Multiquip Inc. and may not be used, reproduced, or altered without written permission. All other trademarks are the property of their respective owners and used with permission.

This manual MUST accompany the equipment at all times. This manual is considered a permanent part of the equipment and should remain with the unit if resold.

The information and specifications included in this publication were in effect at the time of approval for printing. Illustrations, descriptions, references and technical data contained in this manual are for guidance only and may not be considered as binding. Multiquip Inc. reserves the right to discontinue or change specifications, design or the information published in this publication at any time without notice and without incurring any obligations.

