

PARTS MANUAL



Mikasa SERIES
MODEL MVC-i60
ONE-WAY PLATE COMPACTOR
(BATTERY ONE BOB10/BOB14
RECHARGEABLE BATTERY)

Revision #0 (11/26/24)

To find the latest revision of this publication or associated operation manual, visit our website at: www.multiquip.com



THIS MANUAL MUST ACCOMPANY THE EQUIPMENT AT ALL TIMES.

**MVC-i60
Plate Compactor**

Explanation Of Code In Remarks Column..... 4
Suggested Spare Parts 5

Component Drawings

Nameplate And Decals Assembly..... 6-7
Vibrating Plate Assembly 8-9
Base Assembly 10-11
Electric Device Assembly 12-13
Battery And Charger Assembly..... 14-15
Handle And Cart Assembly..... 16-17
Water Tank Assembly 18-19

NOTICE
Specifications and part numbers are subject to change without notice.

EXPLANATION OF CODE IN REMARKS COLUMN

The following section explains the different symbols and remarks used in the Parts section of this manual. Use the help numbers found on the back page of the manual if there are any questions.

NOTICE

The contents and part numbers listed in the parts section are subject to change without notice. Multiquip does not guarantee the availability of the parts listed.

SAMPLE PARTS LIST

NO.	PART NO.	PART NAME	QTY.	REMARKS
1	12345	BOLT	1	INCLUDES ITEMS W/%
2%		WASHER, 1/4 IN.		NOT SOLD SEPARATELY
2%	12347	WASHER, 3/8 IN. ...	1	MQ-45T ONLY
3	12348	HOSE	A/R	MAKE LOCALLY
4	12349	BEARING	1	S/N 2345B AND ABOVE

NO. Column

Unique Symbols — All items with same unique symbol (@, #, +, %, or >) in the number column belong to the same assembly or kit, which is indicated by a note in the “Remarks” column.

Duplicate Item Numbers — Duplicate numbers indicate multiple part numbers, which are in effect for the same general item, such as different size saw blade guards in use or a part that has been updated on newer versions of the same machine.

NOTICE

When ordering a part that has more than one item number listed, check the remarks column for help in determining the proper part to order.

PART NO. Column

Numbers Used — Part numbers can be indicated by a number, a blank entry, or TBD.

TBD (To Be Determined) is generally used to show a part that has not been assigned a formal part number at the time of publication.

A blank entry generally indicates that the item is not sold separately or is not sold by Multiquip. Other entries will be clarified in the “Remarks” Column.

QTY. Column

Numbers Used — Item quantity can be indicated by a number, a blank entry, or A/R.

A/R (As Required) is generally used for hoses or other parts that are sold in bulk and cut to length.

A blank entry generally indicates that the item is not sold separately. Other entries will be clarified in the “Remarks” Column.

REMARKS Column

Some of the most common notes found in the “Remarks” Column are listed below. Other additional notes needed to describe the item can also be shown.

Assembly/Kit — All items on the parts list with the same unique symbol will be included when this item is purchased.

Indicated by:

“INCLUDES ITEMS W/(unique symbol)”

Serial Number Break — Used to list an effective serial number range where a particular part is used.

Indicated by:

“S/N XXXXX AND BELOW”

“S/N XXXX AND ABOVE”

“S/N XXXX TO S/N XXX”

Specific Model Number Use — Indicates that the part is used only with the specific model number or model number variant listed. It can also be used to show a part is NOT used on a specific model or model number variant.

Indicated by:

“XXXXX ONLY”

“NOT USED ON XXXX”

“Make/Obtain Locally” — Indicates that the part can be purchased at any hardware shop or made out of available items. Examples include battery cables, shims, and certain washers and nuts.

“Not Sold Separately” — Indicates that an item cannot be purchased as a separate item and is either part of an assembly/kit that can be purchased, or is not available for sale through Multiquip.

SUGGESTED SPARE PARTS

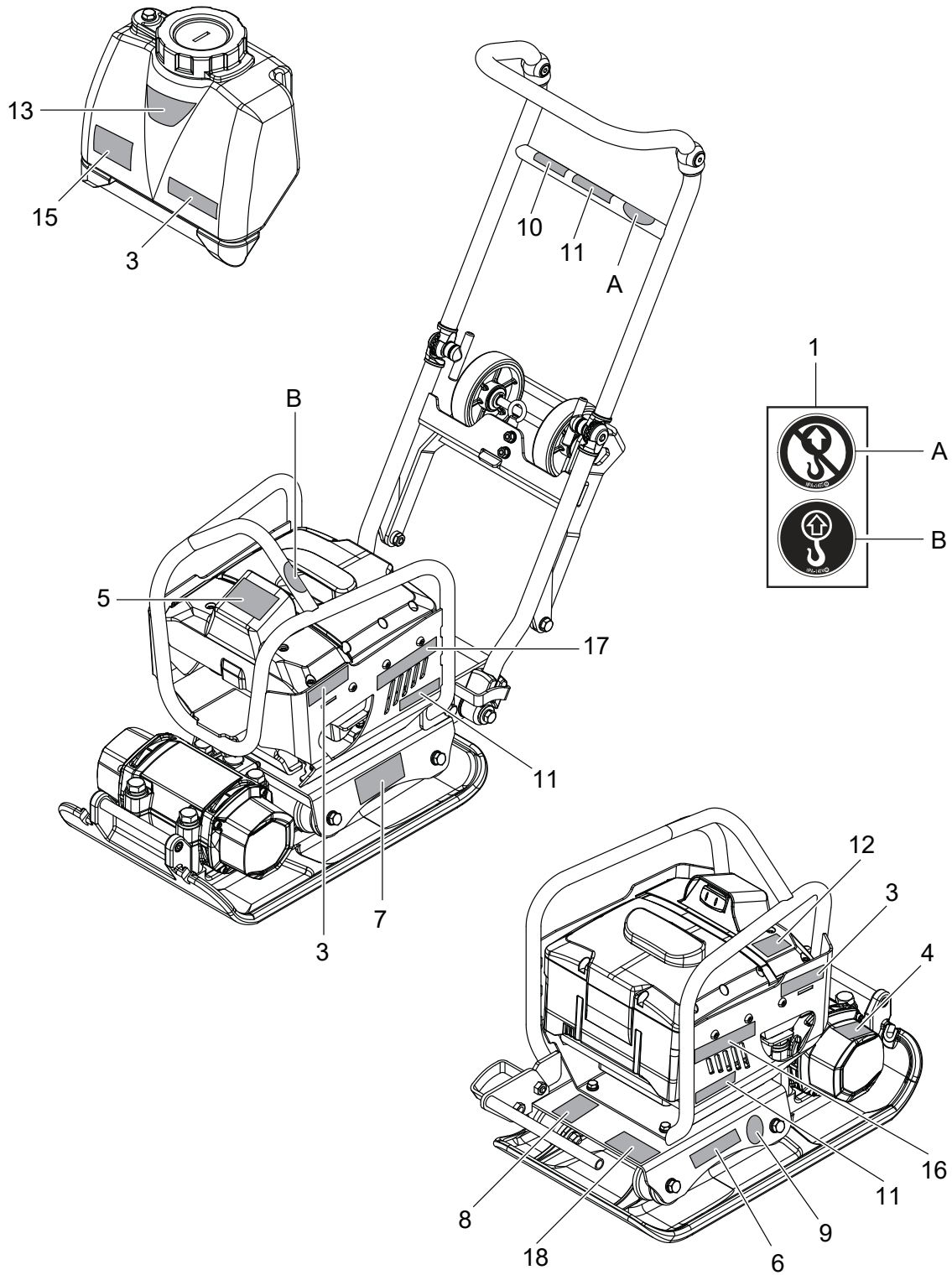
MVCi-60 PLATE COMPACTOR WITH BATTERY ONE BOB10/BOB14 RECHARGEABLE BATTERY 1 to 3 units

Qty.	P/N	Description
2	939010430	SHOCK ABSORBER
1	V4B2S00CGZC17	SWITCH
2	424910010	CONVERTER ASSY.
2	424359340	WIRE HARNESS, SWITCH
1	BOB10	LITHIUM ION BATTERY
1	BOB14	LITHIUM ION BATTERY
1	BOC13	CHARGER, BATTERY
1	954407090	WATER VALVE, HOOK ANGLE TYPE M8

NOTICE

Part numbers on this Suggested Spare Parts list may supersede/replace the part numbers shown in the following parts lists.

NAMEPLATE AND DECALS ASSY.

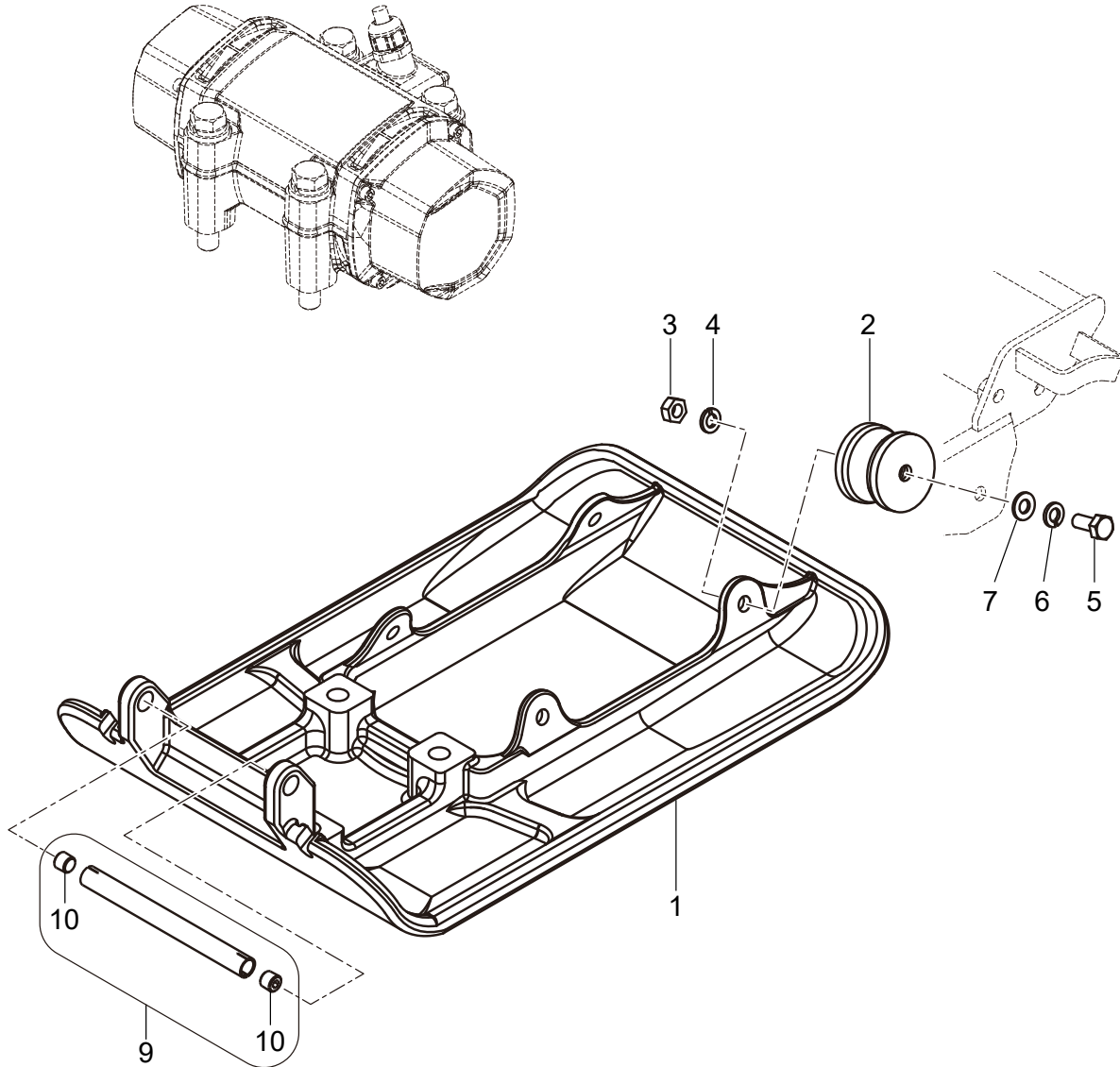


NAMEPLATE AND DECALS ASSY.

<u>NO.</u>	<u>PART NO.</u>	<u>PART NAME</u>	<u>QTY.</u>	<u>REMARKS</u>
1	920900180	DECAL SET, LIFT/NO LIFT	1	
3	920225720	DECAL, MIKASA (125MM) WHITE	3	
4	920217060	DECAL, CAUTION BURN (ICON)	1	
5	920226050	DECAL, SMART-i_66X36	1	
6	920224760	DECAL, CAUTION WASH AND DRY/EX	1	
7	920224350	DECAL, CAUTION/COMBI./e60	1	
8	920222240	DECAL, PROPOSITION 65	1	
9	920224750	DECAL, MQ, 3 YEARS WARRANTY	1	
10	920220740	DECAL, HANDLE ASSEMBLY/CAUTION	1	
11	920226080	DECAL, MQ ZERO 0.75X4"	3	
12	920210330	DECAL, EC NOISE REQ.LWA105	1	
13	920210960	DECAL, M-MARK WHITE-40X80	1	
15	920226100	DECAL, MQ ZERO 2.5X3.1"	1	
16	920225860	DECAL, MVC-i60 (R)/ORANGE	1	
17	920225870	DECAL, MVC-i60 (L)/ORANGE	1	
18	920225940	PLATE, SERIAL NO/MVC-i60/MQ	1	

VIBRATING PLATE ASSY.

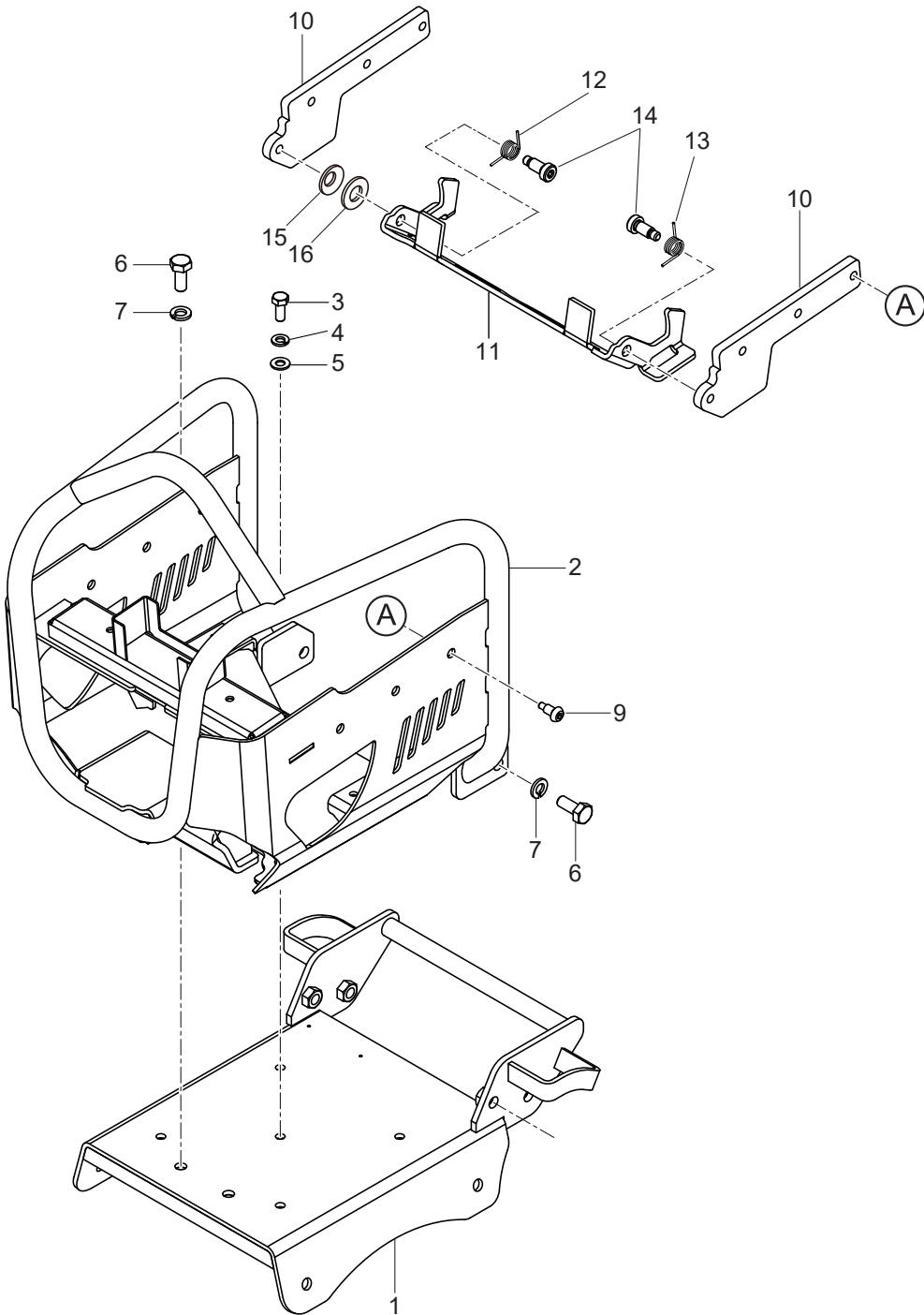
SEE "ELECTRIC DEVICE"



VIBRATING PLATE ASSY.

<u>NO.</u>	<u>PART NO.</u>	<u>PART NAME</u>	<u>QTY.</u>	<u>REMARKS</u>
1	424123400	VIBRATING PLATE	1	
2	939010430	SHOCK ABSORBER, D50X45H 57	4	
3	020310080	NUT M10	4	
4	030210250	WASHER, LOCK M10	4	
5	0105091025	BOLT 10X25	4.....	REPLACES P/N 001221025
6	030210250	WASHER, LOCK M10	4	
7	031110160	WASHER, FLAT M10	4	
9	424910020	GRIP ASSEMBLY	1	
10	423010010	HEX. SOCKET TAPERED PLUG, R1/4	2	

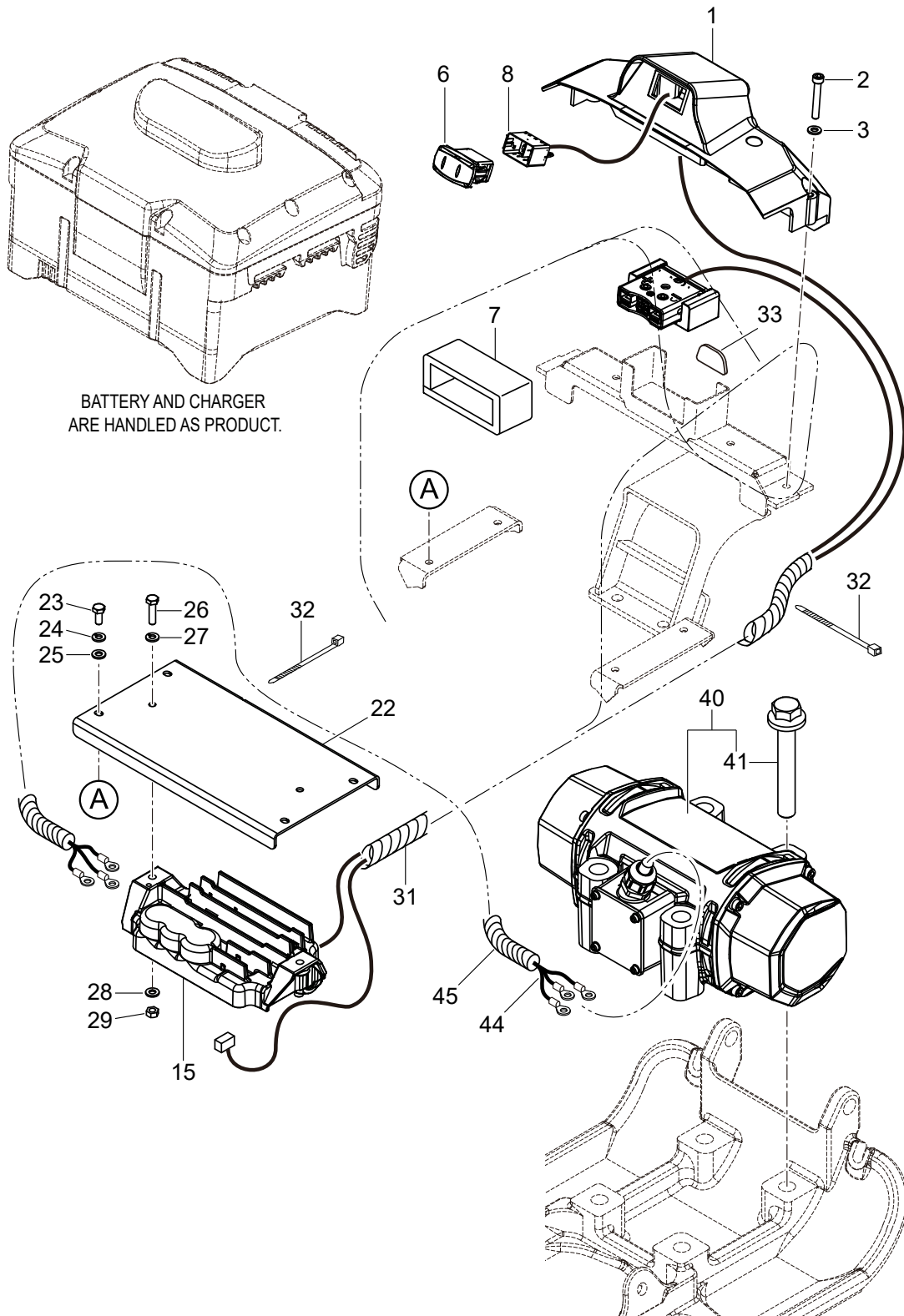
BASE ASSY.



BASE ASSY.

<u>NO.</u>	<u>PART NO.</u>	<u>PART NAME</u>	<u>QTY.</u>	<u>REMARKS</u>
1	424123410-OR	BASE/ORANGE	1	
2	424123420	GUARD FRAME	1	
3	001220820	BOLT 8X20	5	
4	030208200	WASHER, LOCK M8	5	
5	0401450080	WASHER, FLAT M8.....	5.....	REPLACES P/N 031108160
6	0105091025	BOLT 10X25	4.....	REPLACES P/N 001221025
7	030210250	WASHER, LOCK M10	4	
9	424476110	PIN BOLT	6	
10	424476120	GUIDE RAIL, BATTERY	2	
11	424359330	LOCK PLATE	1	
12	424476130	TORSION SPRING (R)	1	
13	424476140	TORSION SPRING (L)	1	
14	424476150	SHOULDER BOLT	2	
15	032110180	CONICAL LOCK WASHER M10	1	
16	031110160	WASHER, FLAT M10	1	

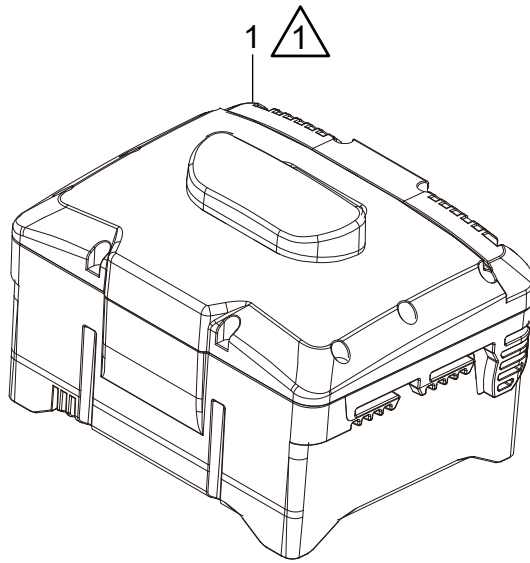
ELECTRIC DEVICE ASSY.




ELECTRIC DEVICE ASSY.

<u>NO.</u>	<u>PART NO.</u>	<u>PART NAME</u>	<u>QTY.</u>	<u>REMARKS</u>
1	424123430	SWITCH COVER	1	
2	001520640	SOCKET HEAD BOLT 6X40	4	
3	952404470	WASHER, FLAT M6.....	4.....	REPLACES P/N 031106100
6	V4B2S00CGZC17K	SWITCH	1	
7	424476160	CUSHION, BATTERY PLUG	1	
8	424359340	WIRE HARNESS, SWITCH	1	
15	424910010	CONVERTER ASSEMBLY	1	
22	424359350	STAY, CONVERTER	1	
23	0105050616	BOLT 6X15	4.....	REPLACES P/N 001220615
24	030206150	WASHER, LOCK M6	4	
25	952404470	WASHER, FLAT M6.....	4.....	REPLACES P/N 031106100
26	011606025	BOLT 6X25	2.....	REPLACES P/N 001220625
27	030206150	WASHER, LOCK M6	2	
28	952404470	WASHER, FLAT M6.....	2.....	REPLACES P/N 031106100
29	020106050	NUT M6.....	2.....	REPLACES P/N 020306050
31	959021810	TUBE, SPIRAL KEP6/L=500	1	
32	507010110A	CLAMP, AB200-W.....	2.....	REPLACES P/N 507010110
33	421473450	CUSHION (SW-BOX HOLDER)	1	
40	918721201	EXCITER	1	
41	5100063187	HEX FLANGE BOLT 16X120	4	
44	424359360	WIRE HARNESS, EXCITER	1	
45	959020014	SPIRAL TUBE, KEP-12-500L	1	

BATTERY AND CHARGER ASSY.



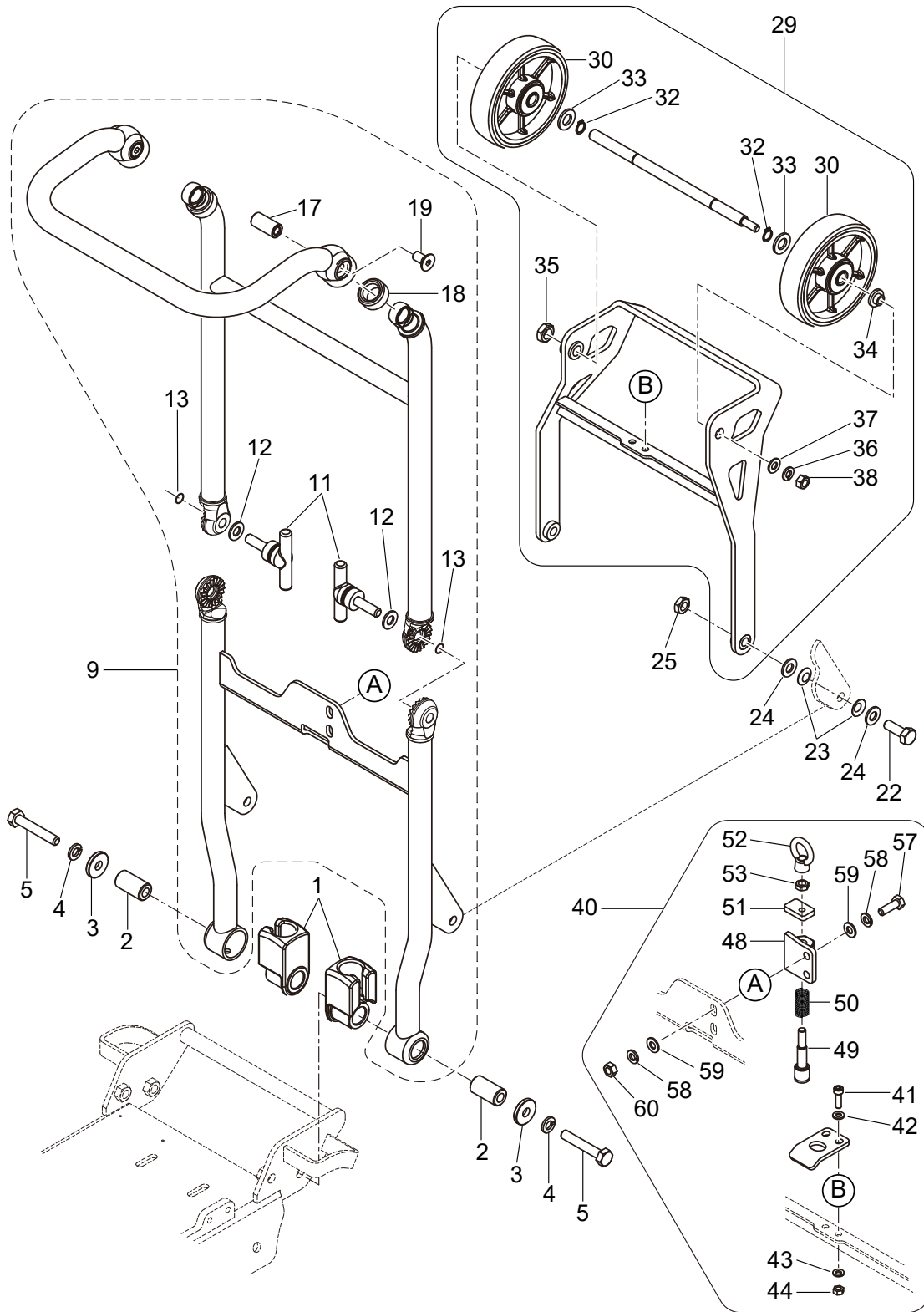
NOTES:

 FOR ITEM 1 AND ITEM 2 CALL
MQ SALES DEPT.

BATTERY AND CHARGER ASSY.

<u>NO.</u>	<u>PART NO.</u>	<u>PART NAME</u>	<u>QTY.</u>	<u>REMARKS</u>
1	BOB10	LI-ION BATTERY, RECHARGEABLE	1.....	CALL MQ SALES DEPT.
1	BOB14	LI-ION BATTERY, RECHARGEABLE	1.....	CALL MQ SALES DEPT.
2	BOC13	CHARGER, BATTERY	1.....	CALL MQ SALES DEPT.

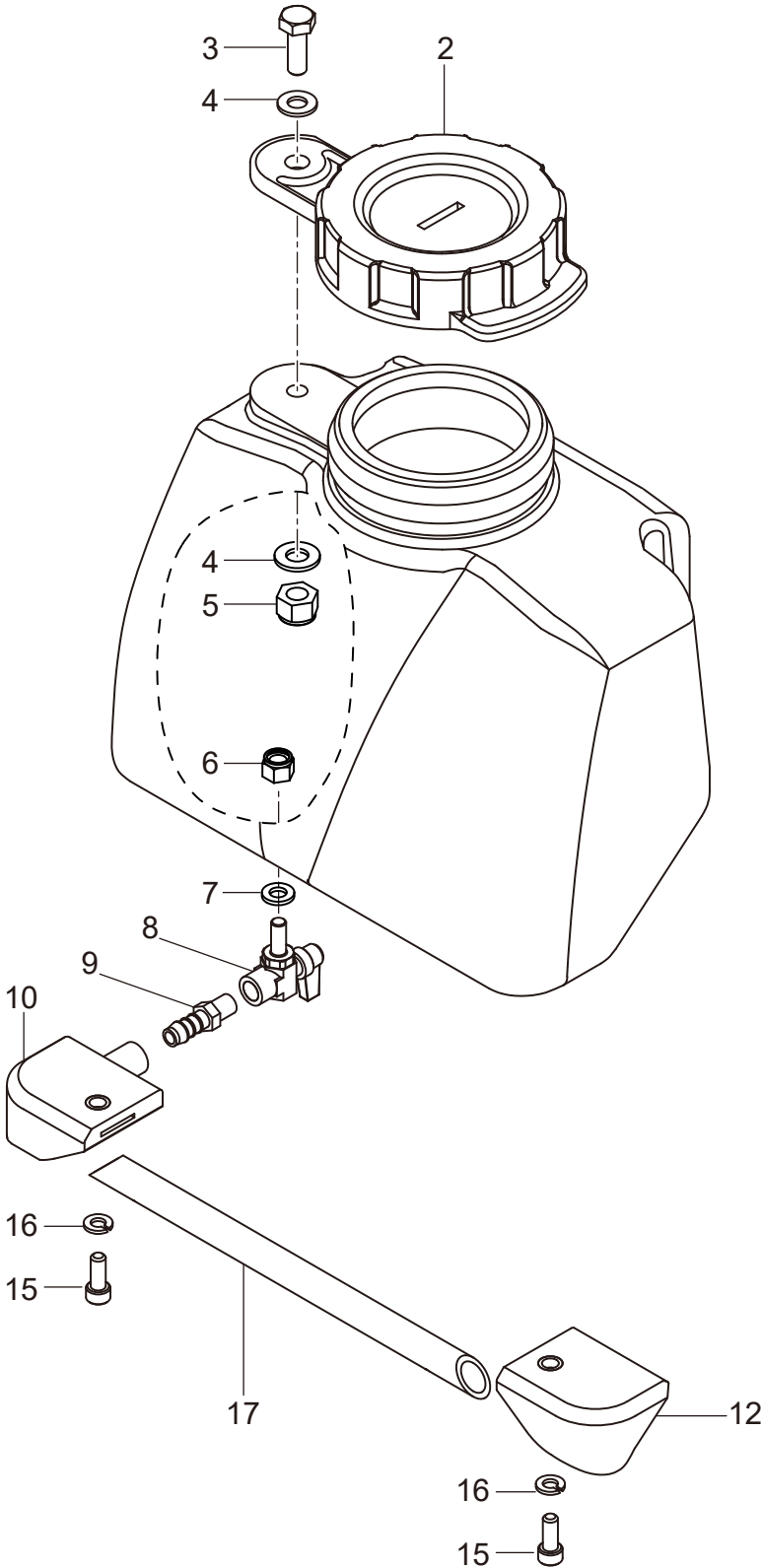
HANDLE AND CART ASSY.



HANDLE AND CART ASSY.

<u>NO.</u>	<u>PART NO.</u>	<u>PART NAME</u>	<u>QTY.</u>	<u>REMARKS</u>
1	423475860	HANDLE STOPPER	2	
2	417454420	COLLAR, 10.5-20-37.5L	2	
3	012210060	BOLT 10X60 T	2	REPLACES P/N 001221052
4	030210250	WASHER, LOCK M10	2	
5	952401660	WASHER, 103045 M10	2	
9	423910020	VAS HOLDING HANDLE ASSEMBLY	1	INCLUDES ITEMS W/\$
11\$	959410490	GRIP BOLT, M10X33L	2	
12\$	031110160	WASHER, FLAT M10	2	
13\$	050200080	O-RING, P-8	2	
17\$	416459320	NUT HANDLE, VAS HANDLE	2	
18\$	416459341	RUBBER, VAS HANDLE	2	
19\$	009120407	BOLT, SUNK HEAD 10X20 T	2	
22	012010030	BOLT 10X30 T	2	REPLACES P/N 001221030
23	032110180	WASHER, CONICAL SPRING M10	4	
24	031110160	WASHER, FLAT M10	4	
25	020310080	NUT M10, HEX	2	REPLACES P/N 020410060
29	423910060	CART ASSEMBLY	1	INCLUDES ITEMS W/#
30#	959411020	WHEELS, 12DX125X42B/T90	2	
32#	080200120	STOP RING, S-12	2	
33#	031112230	WASHER, FLAT M12	2	
34#	423475910	COLLAR, WHEEL	1	
35#	020412070	NUT M12, H=7	1	
36#	030208200	WASHER, LOCK M8	1	
37#	0401450080	WASHER, FLAT M8	1	REPLACES P/N 031108160
38#	020108060	NUT M8	1	REPLACES P/N 020308060
40	423910070	STOPPER SET	1	INCLUDES ITEMS W/%
41%	014206020	BOLT, SOCKET HEAD 6X20 T	2	REPLACES P/N 001520620
42%	952404470	WASHER, FLAT M6	2	REPLACES P/N 031106100
43%	030206150	WASHER, LOCK M6	2	
44%	020106050	NUT M6	2	REPLACES P/N 020306050
48%	418352520	STOPPER BRACKET	1	
49%	418467290	STOPPER PIN, HANDLE D16	1	
50%	418467160	SPRING, STOPPER	1	
51%	418467280	STOPPER, S-BRACKET	1	
52%	959010412	NUT, EYE M8	1	
53%	020408050	NUT M8, H=5	1	
57%	011208025	BOLT 8X25 T	2	REPLACES P/N 001220825
58%	030208200	WASHER, LOCK M8	4	
59%	0401450080	WASHER, FLAT M8	4	REPLACES P/N 031108160
60%	020108060	NUT M8	2	REPLACES P/N 020308060

WATER TANK ASSY.



WATER TANK ASSY.

<u>NO.</u>	<u>PART NO.</u>	<u>PART NAME</u>	<u>QTY.</u>	<u>REMARKS</u>
2	954300343	CAP, WATER TANK (NBR)	1	
3	001241030	BOLT 10X30 U	1	
4	033910160	WASHER, FLAT M10 (SUS)	2	
5	022910270	NYLOC NUT M10 (SUS)	1	
6	022720808	NYLON NUT M8, H=8.7	1	
7	953407410	PACKING, 8X15X2T	1	
8	954407090	WATER VALVE, HOOK ANGLE TYPE M8	1	
9	954405680	CONNECTOR 1/4X10	1	
10	423910030	PIPE HOLDER (COCK) ASSEMBLY	1	
12	423910040	PIPE HOLDER (END) ASSEMBLY	1	
15	014208020	SOCKET HEAD BOLT 8X20 T.....	2.....	REPLACES P/N 001520820
16	030208200	WASHER, LOCK M8	2	
17	423359180	SPRINKLING PIPE	1	

PARTS MANUAL

HERE'S HOW TO GET HELP

PLEASE HAVE THE MODEL AND SERIAL
NUMBER ON-HAND WHEN CALLING

UNITED STATES

Multiquip Inc.

(310) 537- 3700
6141 Katella Avenue Suite 200
Cypress, CA 90630
E-MAIL: mq@multiquip.com
WEBSITE: www.multiquip.com

CANADA

Multiquip

(450) 625-2244
4110 Industriel Boul.
Laval, Quebec, Canada H7L 6V3
E-MAIL: infocanada@multiquip.com

UNITED KINGDOM

Multiquip (UK) Limited Head Office

0161 339 2223
Unit 2, Northpoint Industrial Estate, Globe Lane,
Dukinfield, Cheshire SK16 4UJ
E-MAIL: sales@multiquip.co.uk

© COPYRIGHT 2024, MULTIQUIP INC.

Multiquip Inc, the MQ logo are registered trademarks of Multiquip Inc. and may not be used, reproduced, or altered without written permission. All other trademarks are the property of their respective owners and used with permission.

This manual MUST accompany the equipment at all times. This manual is considered a permanent part of the equipment and should remain with the unit if resold.

The information and specifications included in this publication were in effect at the time of approval for printing. Illustrations, descriptions, references and technical data contained in this manual are for guidance only and may not be considered as binding. Multiquip Inc. reserves the right to discontinue or change specifications, design or the information published in this publication at any time without notice and without incurring any obligations.

