

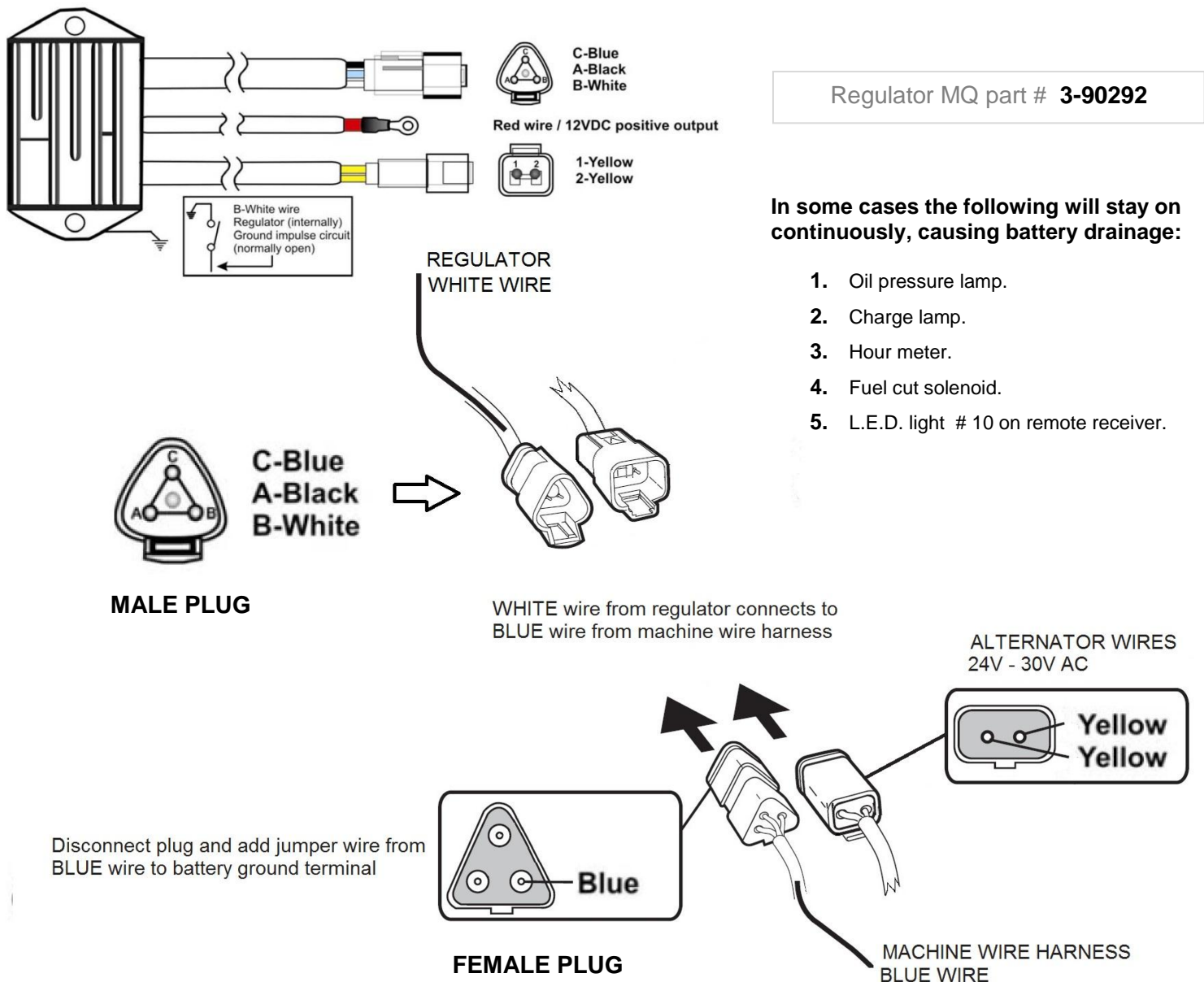
Regulator By-Pass Test

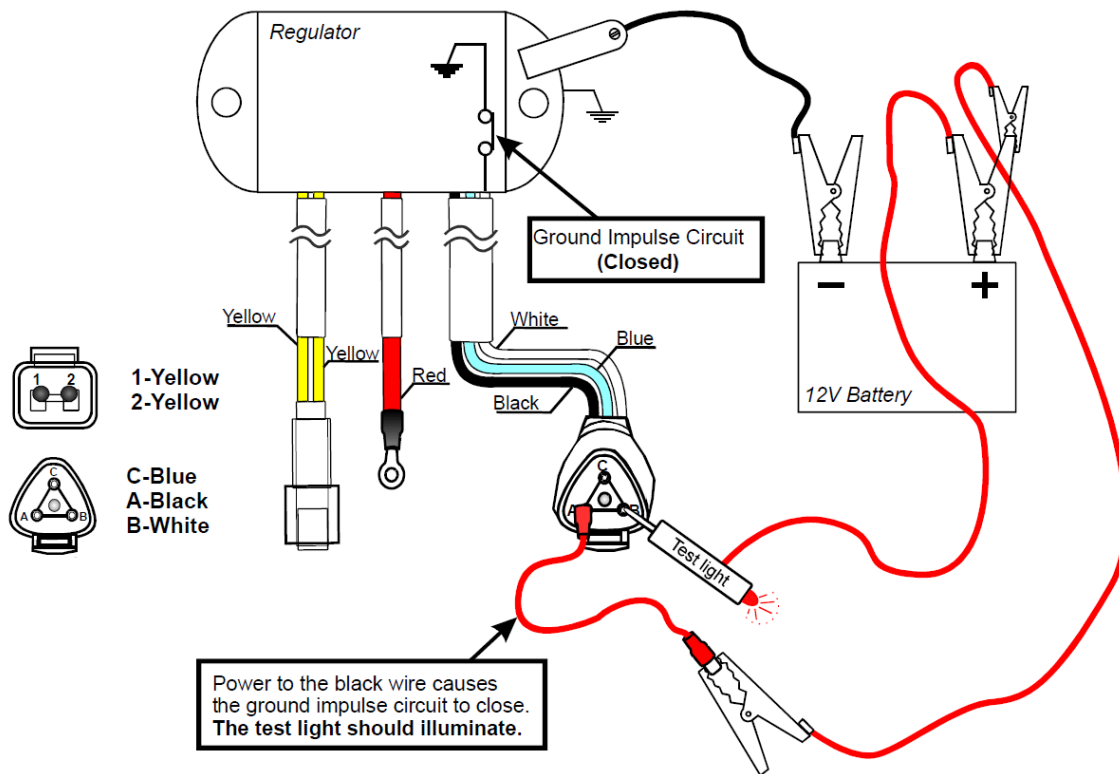
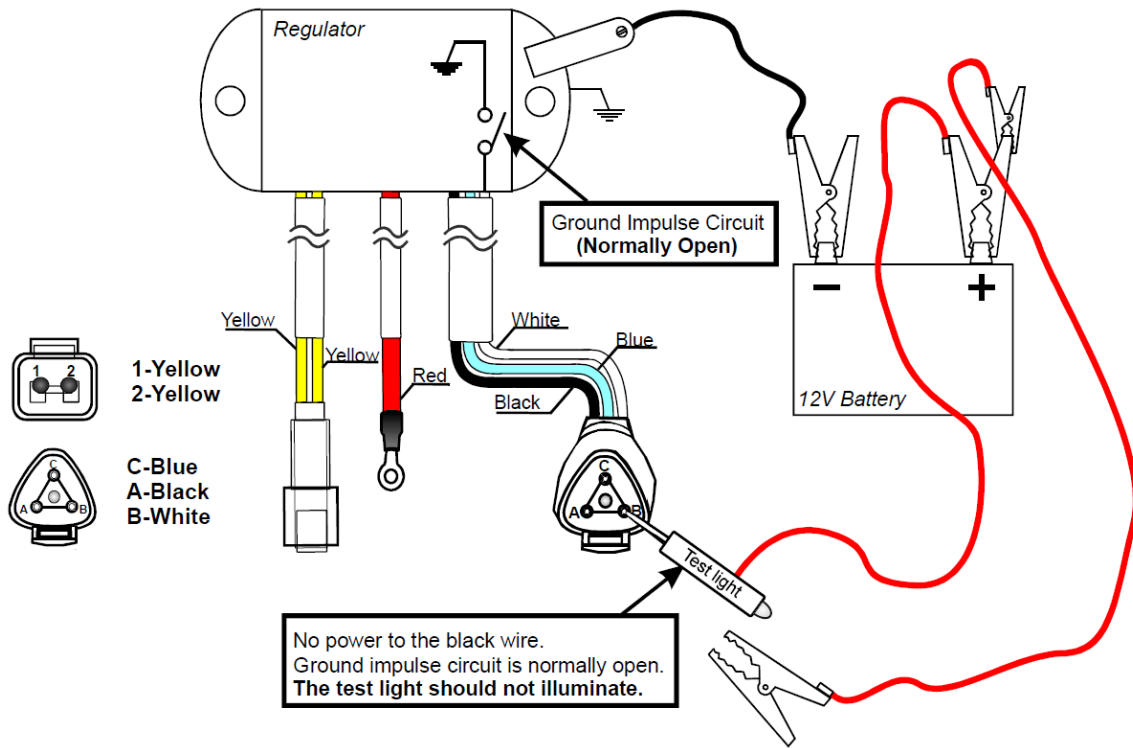
When troubleshooting the electrical system on the RAMMAX walk behind roller, it may be necessary to bypass the regulator in the starting system in order to justify the regulator is at fault.

SYMPTOMS: Battery drainage, engine will not start with key or remote, dash lamps stay on.

INSTRUCTIONS: Ensure battery is fully charged no less than 12.5V, disconnect the triangular plug at the regulator, and install a jumper wire from battery ground to the triangular female plug (BLUE WIRE). Try starting, if machine starts – immediately disconnect the jumper wire and inspect faults are cured.

If regulator is suspect, remove jumper wire and bench test regulator, see page (2)





NOTE: If regulator is found to be defective. Before replacing it ensure alternator is functioning properly - inspect alternator wires for short to ground.