



PX400

MULTIQUIP® 2" Submersible Trash Pump

GALLONS PER MINUTE

72 (272 L)

HEAD

34 ft (10.4 M)

POWER

115V, Single Phase, 60Hz

APPLICATIONS

CONSTRUCTION

Standing Water, Excavation, Site Drainage, Manholes

INDUSTRIAL

Marine Salt Water, Selected Chemicals, Water Supply from Lakes/Rivers, Wastewater, Quarries, Flooded Rooftops and Irrigation

RESIDENTIAL

Flooded Basements, Swimming Pools

STANDARD FEATURES

- **Heavy-duty 1/2 HP motor** for maximum reliability
- **2" (NPT) Female Discharge** w/Barb Hose Adapter and hose clamp
- Abrasion resistant impeller
- Ideal for moving debris laden water (MAX solid 1.35")
- **Dewaters flat surfaces up to 4"** (101.6 mm) levels
- 304 Stainless steel housing
- Pumps liquids up to 104° F
- **Stainless steel and aluminum motor casing** serves as heat conductor
- **Internal thermal protection** prevents motor failure due to overloading and running pump dry
- 19.6 ft. molded power cord

WARRANTY*

PX400: 12 months from date of purchase.

Hoses: 3 months from date of purchase.

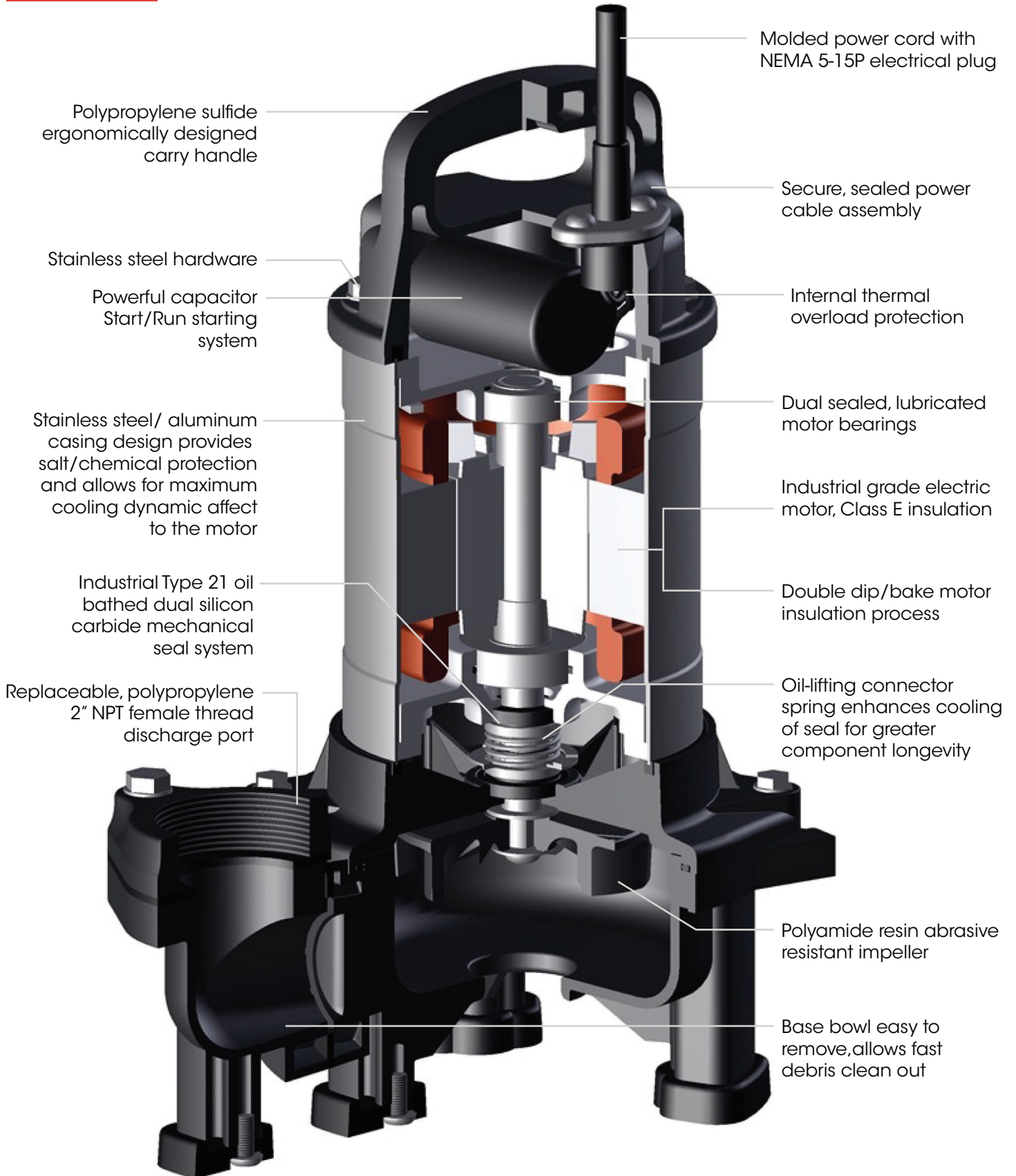
Float Switches: 3 months from date of purchase.

CB3: 3 months from date of purchase.

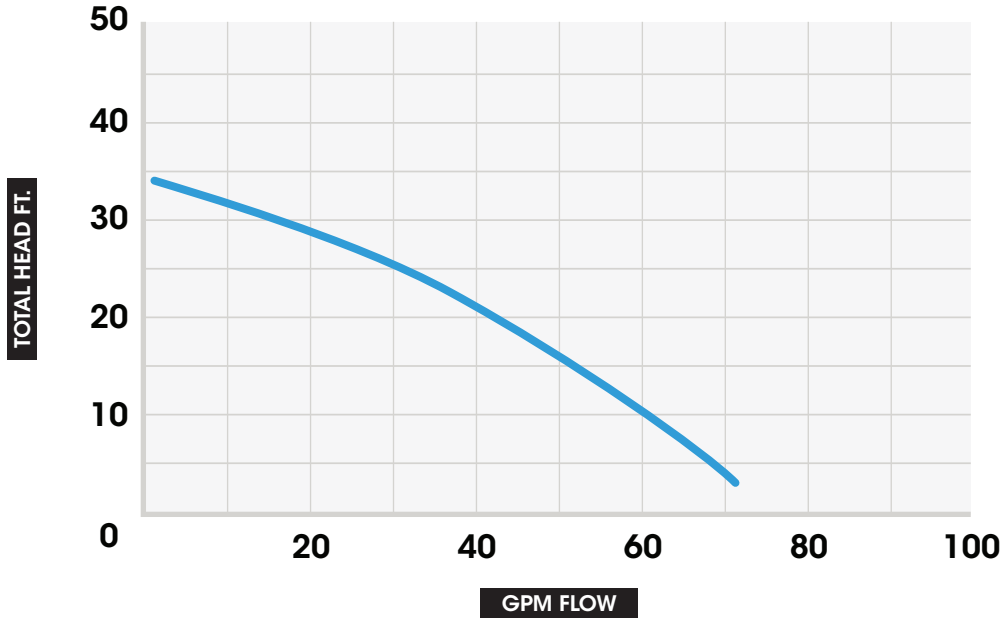
*Refer to the MULTIQUIP NEW PRODUCT LIMITED WARRANTY FOR FULL TERMS AND CONDITIONS.



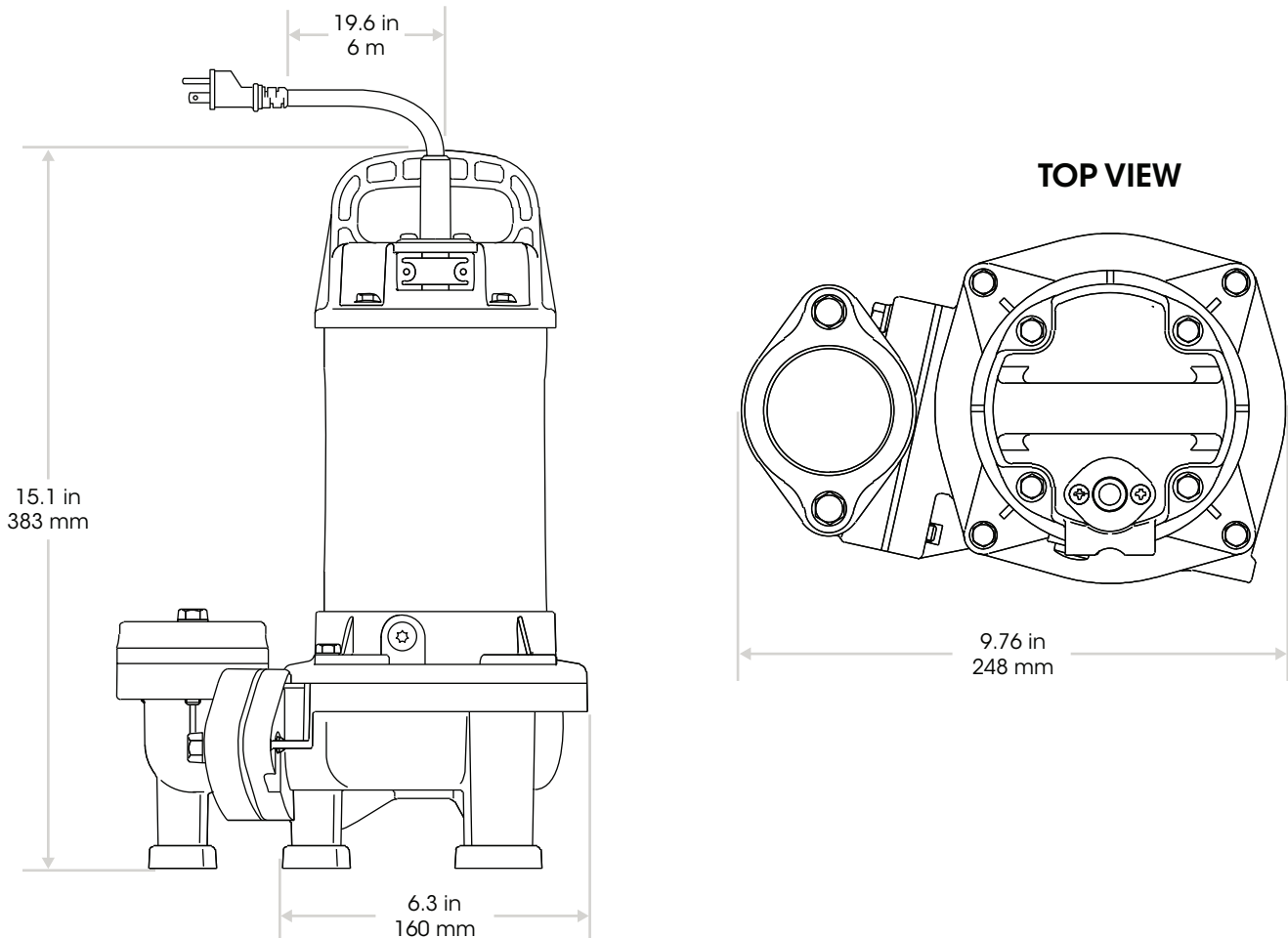
FEATURES



PUMP CURVE



PUMP DIMENSIONS



SPECIFICATIONS

PUMP SPECIFICATIONS	
MODEL	PX400
TYPE	CENTRIFUGAL TRASH SUB PUMP
IMPELLER	POLYAMIDE
SUCTION/DISCHARGE SIZE	2.00 in. (50 mm)
MAX. PUMPING CAPACITY	72 GAL/MIN. - 272 L/MIN.
MAX. HEAD	34 ft. (10.3 M)
PSI	14.7
MIN. PUMPING LEVEL	4.0 in. (101.6 mm)
MIN. SUBMERGENCE	16.6 in. (421.6 mm)
MAX. SOLID HANDLING	1.35 in. (35 mm)
HORSEPOWER	0.5 (0.37 kW)
VOLTAGE	115V
PHASE	1Ø
FREQUENCY	60 Hz
STARTING AMPS	18.6
RUNNING AMPS	6.2
MIN. GENERATOR KW TO START/RUN	2.2 kW/0.8 kW
INSULATION	CLASS E
MAX. FLUID TEMPERATURE	104°F (40°C)
THERMAL OVERLOAD PROTECTION	STANDARD
ROTATION	COUNTERCLOCKWISE
RPM	3390 (±30)
MECHANICAL SEAL SYSTEM	OIL BATHED, DUAL SILICON CARBIDE, CORROSION RESISTANT
MECHANICAL SEAL OIL CAPACITY	5.9 oz (175 cc)
MECHANICAL SEAL OIL TYPE	SHELL TETRA 10SP OR EQUIVALENT
MECHANICAL SHAFT	STAINLESS STEEL
O-RINGS	NITRILE RUBBER
HARDWARE	STAINLESS STEEL
SALT OR CHEMICALS	YES
POWER CABLE PLUG	NEMA 5-15P
POWER CABLE PROTECTION	N/A
POWER CABLE LENGTH	19.6 ft. (6 M)
DRY WEIGHT	16.8 lb. (7.6 kg)

FLOAT SWITCH FEATURES	SW1A	SW1WOPA	SW2A
SINGLE MECHANICAL FLOAT	X	X	—
DOUBLE MECHANICAL FLOAT	—	—	X
120VAC	X	X	X
PIGGY-BACK PLUG (NEMA 5-15)	X	—	X
OPEN WIRE END, FOR CONTROL BOX APPLICATIONS ONLY	—	X	—
CORROSION RESISTANT PVC HOUSING	X	X	—
CORROSION RESISTANT HIGH-IMPACT HOUSING	—	—	X
HEAVY-DUTY CONTACTS	X	X	X
OPERATES IN WATER UP TO 104°F (40°C)	X	X	X
ADJUSTABLE RANGE 7" TO 36" (18 - 91 CM)	X	X	—
ADJUSTABLE RANGE 3" TO 48" (7.6 - 122 CM)	—	—	X
16 GAUGE CORD FLOAT SWITCH CORD 20' (6.1 METERS)	X	X	—
14 GAUGE CORD FLOAT SWITCH CORD 20' (6.1 METERS)	—	—	X
PRESSURE TESTED TO 60'	X	X	—
INCLUDES MOUNTING CLAMPS	X	X	X
UL LISTED	X	X	X
CSA CERTIFIED	X	X	X



OPTIONS

DISCHARGE HOSES

- **HD250C** - 2" x 50 ft., 75psi, NPS thread
- **HDQ250C** - 2" x 50 ft., 75psi NPT thread, includes one quick disconnect coupler
- **A200A** - 2" type A coupler, male quick disconnect x female NPT



CB3 CONTROL BOX

Offered for convenient MANUAL/AUTO and float switch operations. Water resistant fiberglass housing and cable connectors prevent moisture from entering into box. Features operation switch and running light. Includes two SW1WOPA float switches.

Voltage - 120V
Phase - 1Ø
Amps (FLA) - 40A

UL Listed



NOTICE Features and Specifications are subject to change without notice.