

PARTS MANUAL



DRY PRIME PUMP

MP150SDLTE (6-inch, High Flow, Deutz F3L914, Electric Brakes)

MP150SDLTS (6-inch, High Flow, Deutz F3L914, Surge Brakes)

MP150SDLSM (6-inch, High Flow, Deutz F3L914, Skid Mount)

MP200DLTE (8-inch, High Flow, Deutz F3L914, Electric Brakes)

MP200DLTS (8-inch, High Flow, Deutz F3L914, Surge Brakes)

MP200DLSM (8-inch, High Flow, Deutz F3L914, Skid Mount)

MP200SDLTE (8-inch, High Flow, Deutz F4L914, Electric Brakes)

MP200DLST (8-inch, High Flow, Deutz F4L914, Surge Brakes)

MP200SDLSM (8-inch, High Flow, Deutz F4L914, Skid Mount)

Revision #5 (10/12/09)

To find the latest revision of this
publication, visit our website at:
www.multiquip.com



THIS MANUAL MUST ACCOMPANY THE EQUIPMENT AT ALL TIMES.



WARNING



CALIFORNIA — Proposition 65 Warning

Engine exhaust and some of its constituents, and some dust created by power sanding, sawing, grinding, drilling and other construction activities contains chemicals known to the State of California to cause cancer, birth defects and other reproductive harm. Some examples of these chemicals are:

- Lead from lead-based paints.
- Crystalline silica from bricks.
- Cement and other masonry products.
- Arsenic and chromium from chemically treated lumber.

Your risk from these exposures varies, depending on how often you do this type of work. To reduce your exposure to these chemicals: **ALWAYS** work in a well ventilated area, and work with approved safety equipment, such as dust masks that are specially designed to filter out microscopic particles.

WARNING



SILICOSIS WARNING

Grinding/cutting/drilling of masonry, concrete, metal and other materials with silica in their composition may give off dust or mists containing crystalline silica. Silica is a basic component of sand, quartz, brick clay, granite and numerous other minerals and rocks. Repeated and/or substantial inhalation of airborne crystalline silica can cause serious or fatal respiratory diseases, including silicosis. In addition, California and some other authorities have listed respirable crystalline silica as a substance known to cause cancer. When cutting such materials, always follow the respiratory precautions mentioned above.

WARNING



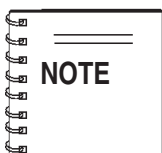
RESPIRATORY HAZARDS

Grinding/cutting/drilling of masonry, concrete, metal and other materials can generate dust, mists and fumes containing chemicals known to cause serious or fatal injury or illness, such as respiratory disease, cancer, birth defects or other reproductive harm. If you are unfamiliar with the risks associated with the particular process and/or material being cut or the composition of the tool being used, review the material safety data sheet and/or consult your employer, the material manufacturer/supplier, governmental agencies such as OSHA and NIOSH and other sources on hazardous materials. California and some other authorities, for instance, have published lists of substances known to cause cancer, reproductive toxicity, or other harmful effects.

Control dust, mist and fumes at the source where possible. In this regard use good work practices and follow the recommendations of the manufacturers or suppliers, OSHA/NIOSH, and occupational and trade associations. Water should be used for dust suppression when wet cutting is feasible. When the hazards from inhalation of dust, mists and fumes cannot be eliminated, the operator and any bystanders should always wear a respirator approved by NIOSH/MSHA for the materials being used.

MQ - DRY PRIME PUMP

Table of Contents	4
Parts Ordering Procedures	5
Explanation Of Code In Remarks Column	6
Suggested Spare Parts	7
Nameplate and Decals	8-11
Engine Skid Rails Assy.	12-13
Deutz F3L914 Engine Assy.	14-17
Deutz F4L914 Engine Assy.	18-21
Priming System Hoses	22-23
Pump End Assy.	24-25
Bearing Housing Assy.	26-27
Vacuum Pump Assy	28-29
Vac. Pump Bearing Housing Assy	30-31
Volute And Check Valve Assy.	32-33
Check Valve Assy.	34-35
Vacuum Pump Assy.	24-25
Impeller and Wear Plate Assy	36-37
Priming Tank Assy.	38-41
Float Valve Assy.	42-43
Battery Assy.	44-45
Fuel Tank Assy.	46-47
Trailer Assy (Trailer Lights)	48-49
Trailer Assy. (Surge Brake)	50-51
Trailer Assy. (Electric Brake)	52-53
Terms and Conditions of Sale	55



Specifications are subject to change without notice.

PARTS ORDERING PROCEDURES

Ordering parts has never been easier! Choose from three easy options:

Effective:
January 1st, 2006



Order via Internet (Dealers Only):

Order parts on-line using Multiquip's SmartEquip website!

- View Parts Diagrams
- Order Parts
- Print Specification Information



If you have an MQ Account, to obtain a Username and Password, E-mail us at: **parts@multiquip.com**.

To obtain an MQ Account, contact your District Sales Manager for more information.

Goto www.multiquip.com and click on

Order Parts to log in and save!

Use the **internet** and qualify for a **5% Discount** on *Standard orders* for all orders which include complete part numbers.*

Note: Discounts Are Subject To Change



Order via Fax (Dealers Only):

All customers are welcome to order parts via Fax.

Domestic (US) Customers dial:

1-800-6-PARTS-7 (800-672-7877)

Fax your order in and qualify for a **2% Discount** on *Standard orders* for all orders which include complete part numbers.*

Note: Discounts Are Subject To Change



Order via Phone: Domestic (US) Dealers Call:
1-800-427-1244

Non-Dealer Customers:

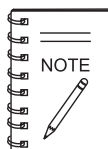
Contact your local Multiquip Dealer for parts or call 800-427-1244 for help in locating a dealer near you.



International Customers should contact their local Multiquip Representatives for Parts Ordering information.

When ordering parts, please supply:

- | | |
|---|--|
| <input type="checkbox"/> Dealer Account Number | <input type="checkbox"/> Specify Preferred Method of Shipment: |
| <input type="checkbox"/> Dealer Name and Address | ✓ UPS/Fed Ex ✓ DHL |
| <input type="checkbox"/> Shipping Address (if different than billing address) | ■ Priority One ✓ Truck |
| <input type="checkbox"/> Return Fax Number | ■ Ground |
| <input type="checkbox"/> Applicable Model Number | ■ Next Day |
| <input type="checkbox"/> Quantity, Part Number and Description of Each Part | ■ Second/Third Day |



All orders are treated as *Standard Orders* and will ship the same day if received prior to 3PM PST.

WE ACCEPT ALL MAJOR CREDIT CARDS!



www.multiquip.com



EXPLANATION OF CODE IN REMARKS COLUMN

The following section explains the different symbols and remarks used in the Parts section of this manual. Use the help numbers found on the back page of the manual if there are any questions.

The contents and part numbers listed in the parts section are subject to change **without notice**. Multiquip does not guarantee the availability of the parts listed.

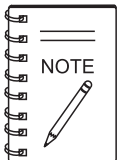
Sample Parts List:

NO.	PART NO.	PART NAME	QTY.	REMARKS
1	12345	BOLT	1	INCLUDES ITEMS W/*
2*		WASHER, 1/4 IN.		NOT SOLD SEPARATELY
2*	12347	WASHER, 3/8 IN. ...	1	MQ-45T ONLY
3	12348	HOSE	A/R	MAKE LOCALLY
4	12349	BEARING	1	S/N 2345B AND ABOVE

NO. Column

Unique Symbols - All items with same unique symbol (*, #, +, %, or >) in the number column belong to the same assembly or kit, which is indicated by a note in the "Remarks" column.

Duplicate Item Numbers - Duplicate numbers indicate multiple part numbers are in effect for the same general item, such as different size saw blade guards in use or a part that has been updated on newer versions of the same machine.



When ordering a part that has more than one item number listed, check the remarks column for help in determining the proper part to order.

PART NO. Column

Numbers Used - Part numbers can be indicated by a number, a blank entry, or TBD.

TBD (To Be Determined) is generally used to show a part that has not been assigned a formal part number at time of publication.

A blank entry generally indicates that the item is not sold separately or is not sold by Multiquip. Other entries will be clarified in the "Remarks" Column.

QTY. Column

Numbers Used - Item quantity can be indicated by a number, a blank entry, or A/R.

A/R (As Required) is generally used for hoses or other parts that are sold in bulk and cut to length.

A blank entry generally indicates that the item is not sold separately. Other entries will be clarified in the "Remarks" Column.

REMARKS Column

Some of the most common notes found in the "Remarks" Column are listed below. Other additional notes needed to describe the item can also be shown.

Assembly/Kit - All items on the parts list with the same unique symbol will be included when this item is purchased.

Indicated by:

"INCLUDES ITEMS W/(unique symbol)"

Serial Number Break - Used to list an effective serial number range where a particular part is used.

Indicated by:

"S/N XXXXX AND BELOW"

"S/N XXXX AND ABOVE"

"S/N XXXX TO S/N XXX"

Specific Model Number Use - Indicates that the part is used only with the specific model number or model number variant listed. It can also be used to show a part is NOT used on a specific model or model number variant.

Indicated by:

"XXXXX ONLY"

"NOT USED ON XXXX"

"Make/Obtain Locally" - Indicates that the part can be purchased at any hardware shop or made out of available items. Examples include battery cables, shims, and certain washers and nuts.

"Not Sold Separately" - Indicates that an item cannot be purchased as a separate item and is either part of an assembly/kit that can be purchased, or is not available for sale through Multiquip.

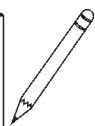
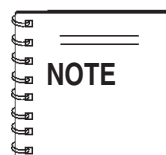
MQ DRY PRIME PUMP

1 TO 3 UNITS WITH DEUTZ DIESEL ENGINE

Qty.	P/N	Description
2	17020	O-RING, SIZE 2-248 VITON
1	17031	O-RING, SIZE 2-237 VITON
1	17037	GASKET, VOLUTE TO PRIMING TANK
1	17038	GASKET, PRIMING TANK ACCESS PANEL
1	17039	GASKET, PRIMING TANK FLOAT VALVE
3	17040	GASKET, 8" FLANGE
2	17063	PIN, DISCHARGE CHECK VALVE PIVOT
1	17073	RUBBER SEAL, DISCHARGE CHECK VALVE
4	17074	BUSHING, BRONZE .5 X .625 X 1" W/FLANGE
1	17125	HINGE, MP PUMP FLOAT VALVE
2	17138	O-RING, SIZE 3-906 VITON
2	17141	O-RING, SIZE 2-228 VITON
4	17143	O-RING, SIZE 2-271 VITON
1	17144	O-RING, SIZE 2-457 VITON
1	17219	GUAGE, 0 RO -30INHG, .25MP
1	17417	BEARING HSG KIT, MECH SEAL ASSY.
1	17419	VAC PUMP KIT, MECH SEAL ASSY.
1	17180	FILTER, FLOJET P/N 1740-002
4	25666	O-RING, SIZE-3-912 12 BOSS
3	1181917	FILTER, FUEL
3	1182001	FILTER, OIL
1	2235175	BELT, FAN
1	2235178	BELT, ALTERNATOR

RECOMENDED SERVICE TOOLING

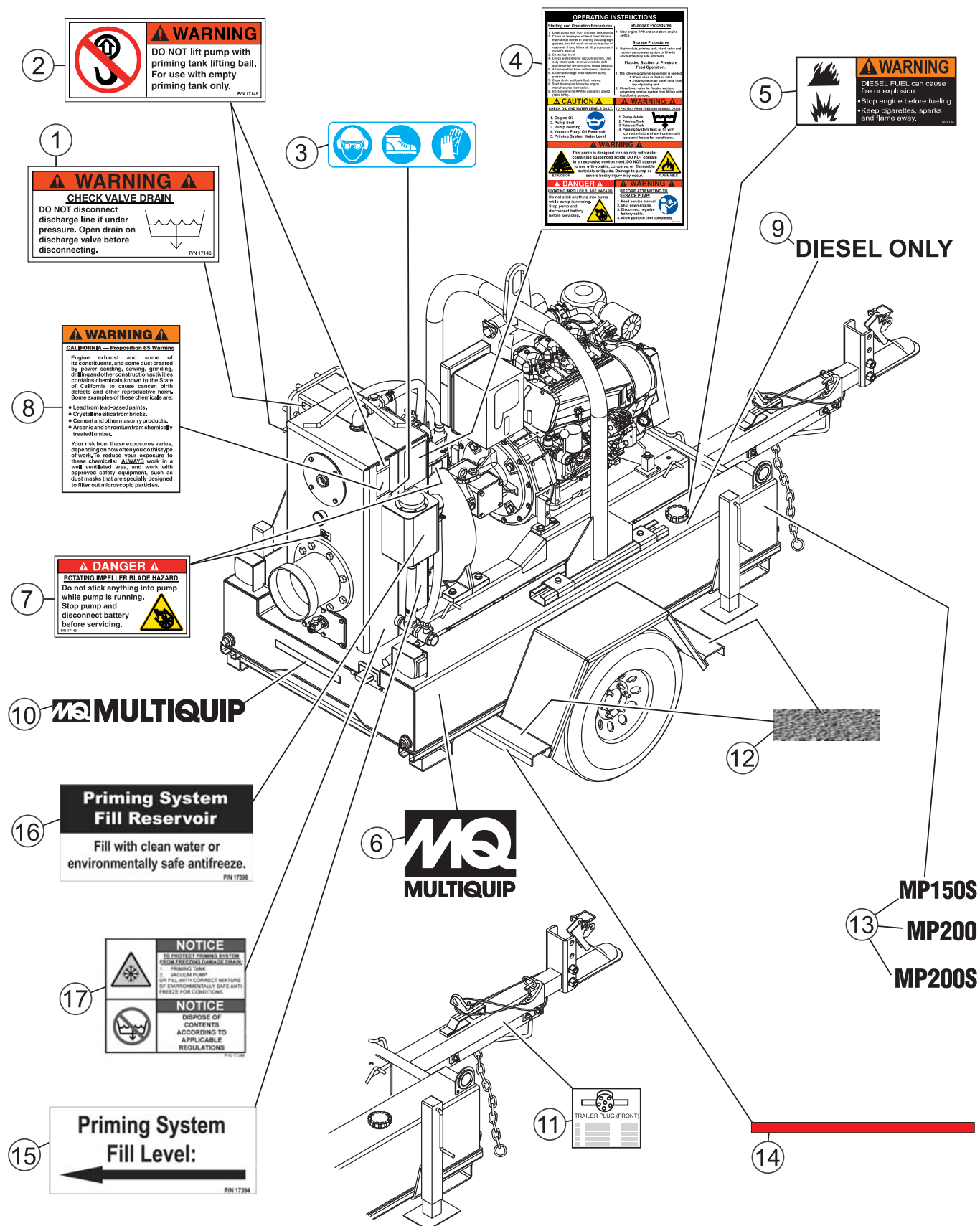
Qty.	P/N	Description
1	17171	IMPELLER PULLER, SCREW, HHC M30
1	17423	SOCKET, BEARING NUT
1	17424	COUPLER PULLER, MP PUMP



Part numbers on this Suggested Spare Parts List may supercede/replace the P/N's shown in the teXt pages of this manual.

NAMEPLATES AND DECALS (1)

NAMEPLATES AND DECALS (1)

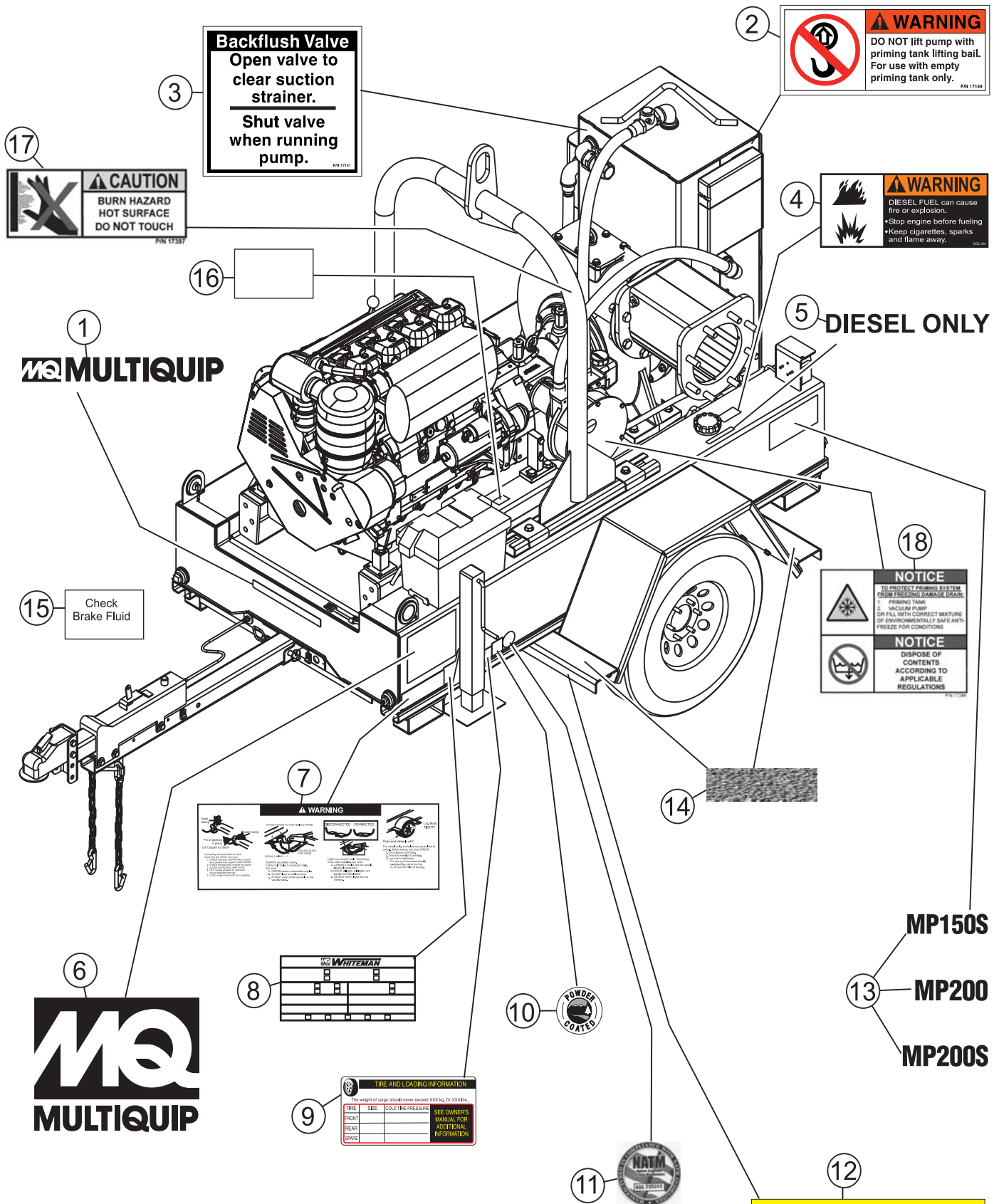


NAMEPLATES AND DECALS (1)

NAMEPLATES AND DECALS (1)

<u>NO.</u>	<u>PART NO.</u>	<u>PART NAME</u>	<u>QTY.</u>	<u>REMARKS</u>
1	17175	DECAL, WARNING CHECK VALVE DRAIN	1	SAFETY ITEM
2	17176	DECAL, WARNING PRIMING TANK LIFT BAIL	3	SAFETY ITEM
3	36099	DECAL, PROTECTIVE CLOTHING ISO BLUE	1	SAFETY ITEM
4	17174	DECAL, OPERATING INSTRUCTIONS/WARNINGS	1	SAFETY ITEM
5	36092	DECAL, WARNING DIESEL FUEL 3.5 X 1.75	1	SAFETY ITEM
6	17347	DECAL, MQ LOGO 8 X 10 WHITE	2	
7	17178	DECAL, DANGER ROTATING IMPELLER BLADE ...	2	SAFETY ITEM
8	20525	DECAL, WARNING "PROP 65" 3.25 X 4.25	1	SAFETY ITEM
9	29157	DECAL, DIESEL ONLY	1	SAFETY ITEM
10	17348	DECAL, MQ MULTQUIP 14" WHITE	2	
11	29440	DECAL, WARNING ELECTRICAL CONNECTORS ..	1	SAFETY ITEM
12	17298	TAPE, NON-SKID SURFACE	4	SAFETY ITEM
			SOLD IN FT. LENGTHS
13	17569	DECAL, MP150S	2	
	17570	DECAL, MP200	2	
	17571	DECAL, MP200S	2	
14	17297	DECAL, REFLECTIVE TAPE 1" RED/WHITE	150"	SAFETY ITEM
15	17394	DECAL, PRIMING SYSTEM FILL LEVEL	1	
16	17398	DECAL, PRIMING SYSTEM	1	
17	17399	DECAL, PRIMING SYSTEM DRAIN	1	

NAMEPLATES AND DECALS (2)



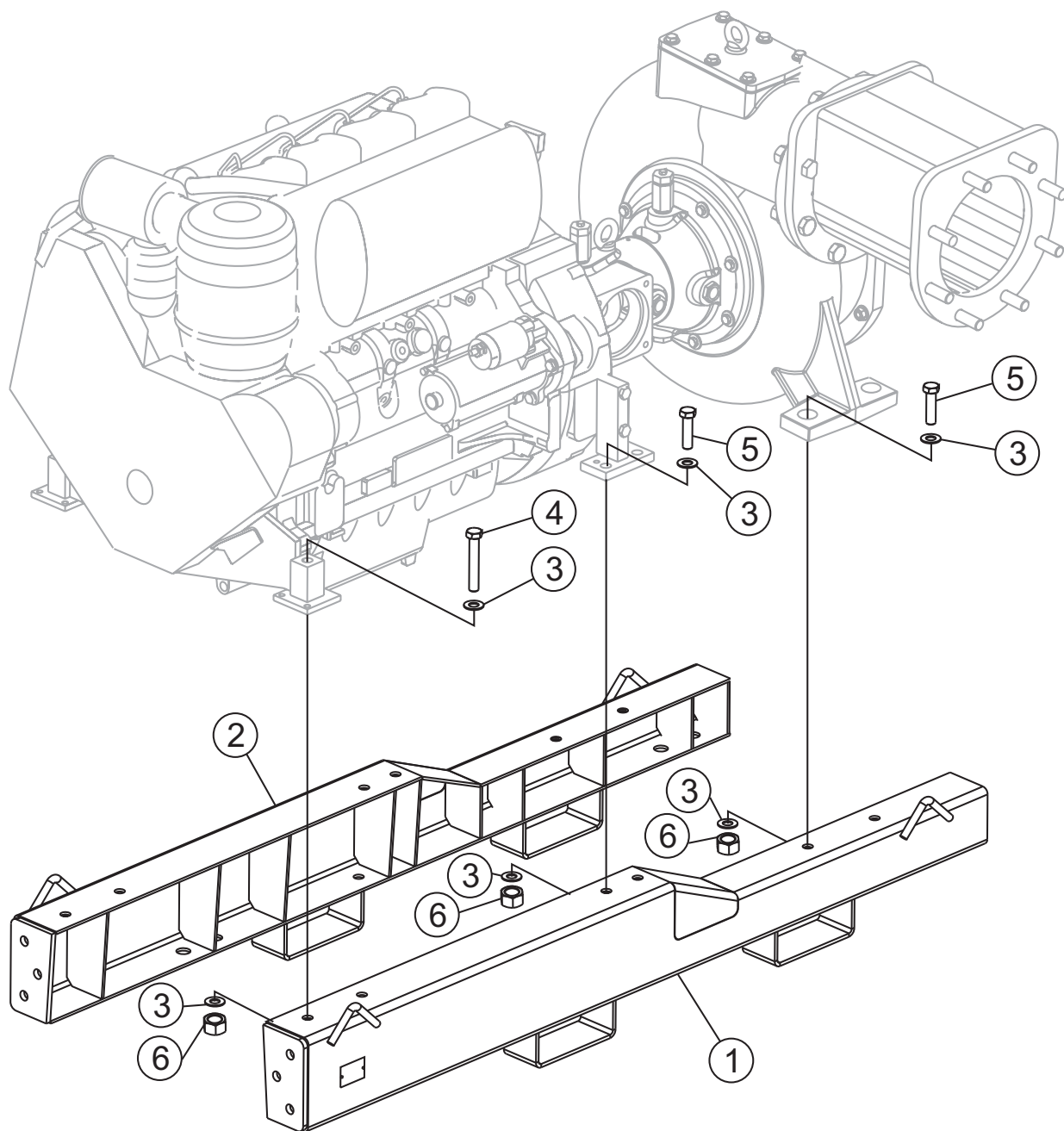
NAMEPLATES AND DECALS (2)

NAMEPLATES AND DECALS (2)

<u>NO.</u>	<u>PART NO.</u>	<u>PART NAME</u>	<u>QTY.</u>	<u>REMARKS</u>
1	17348	DECAL, MQ MULTIQUIP 14" WHITE	2	
2	17176	DECAL, WARNING PRIMING TANK LIFT BAIL	3	SAFETY ITEM
3	17177	DECAL, BACKFLUSH VALVE	1	
4	36092	DECAL, WARNING DIESEL FUEL 3.5 X 1.75	1	SAFETY ITEM
5	29157	DECAL, DIESEL ONLY	1	SAFETY ITEM
6	17347	DECAL, MQ LOGO 8 X 10 WHITE	2	
7	49002	DECAL, WARNING TRLR HTCH/WHEEL	2	SAFETY ITEM
8	29680	DECAL, MULTIPLE TRAILER VIN	1	
9	17322	DECAL, TIRE LOADING	1	SAFETY ITEM
10	13118	DECAL, POWDER COATED	1	
11	29729	DECAL, NATM MANUFACTURER COMPLIANCE	1	
12	37513	DECAL, REFLECTIVE TAPE 1" YELLOW	2	SAFETY ITEM
			SOLD IN FT. LENGTHS
13	17569	DECAL, MP150S	2	
	17570	DECAL, MP200	2	
	17571	DECAL, MP200S	2	
14	17298	TAPE, NON-SKID SURFACE	4	SAFETY ITEM
			SOLD IN FT. LENGTHS
15	29713	DECAL, BRAKE FLUID CHECK	1	SURGE BRAKE MODELS
16		MQ SERIAL TAG	1	CONTACT SERVICE DEPT.
17	17397	DECAL, HOT SURFACE	1	SAFETY ITEM
18	17399	DECAL, PRIMING SYSTEM DRAIN	1	

ENGINE SKID RAILS ASSY.

ENGINE SKID RAILS ASSY.



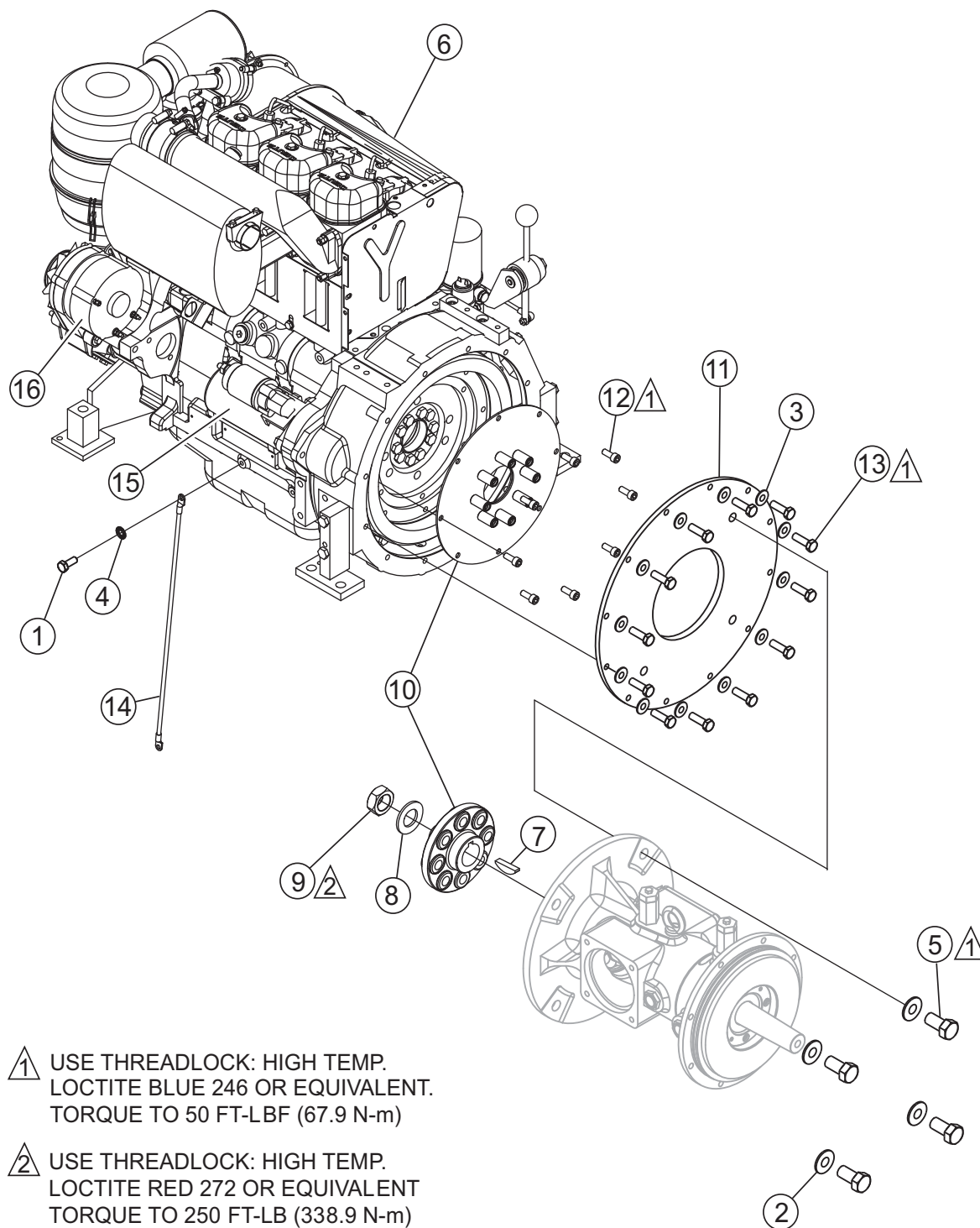
ENGINE SKID RAILS ASSY.

ENGINE SKID RAILS ASSY.

<u>NO.</u>	<u>PART NO.</u>	<u>PART NAME</u>	<u>QTY.</u>	<u>REMARKS</u>
1	17224	RAIL, MP PUMP LH SIDE	1	
2	17225	RAIL, MP PUMP RH SIDE	1	
3	4684	WASHER, FLAT SAE 5/8 PLTD	20	
4	17412	SCREW, HHC M16 - 2.00 X 120 ZN CL8.8	2	
5	17170	SCREW, HHC M16 - 2.00 X 60 ZN CL8.8	8	
6	17097	NUT, NYLOC M16-2.00 DIN985	10	

DEUTZ F3L914 ENGINE ASSY. (1)

DEUTZ F3L914 ENGINE ASSY. (1)

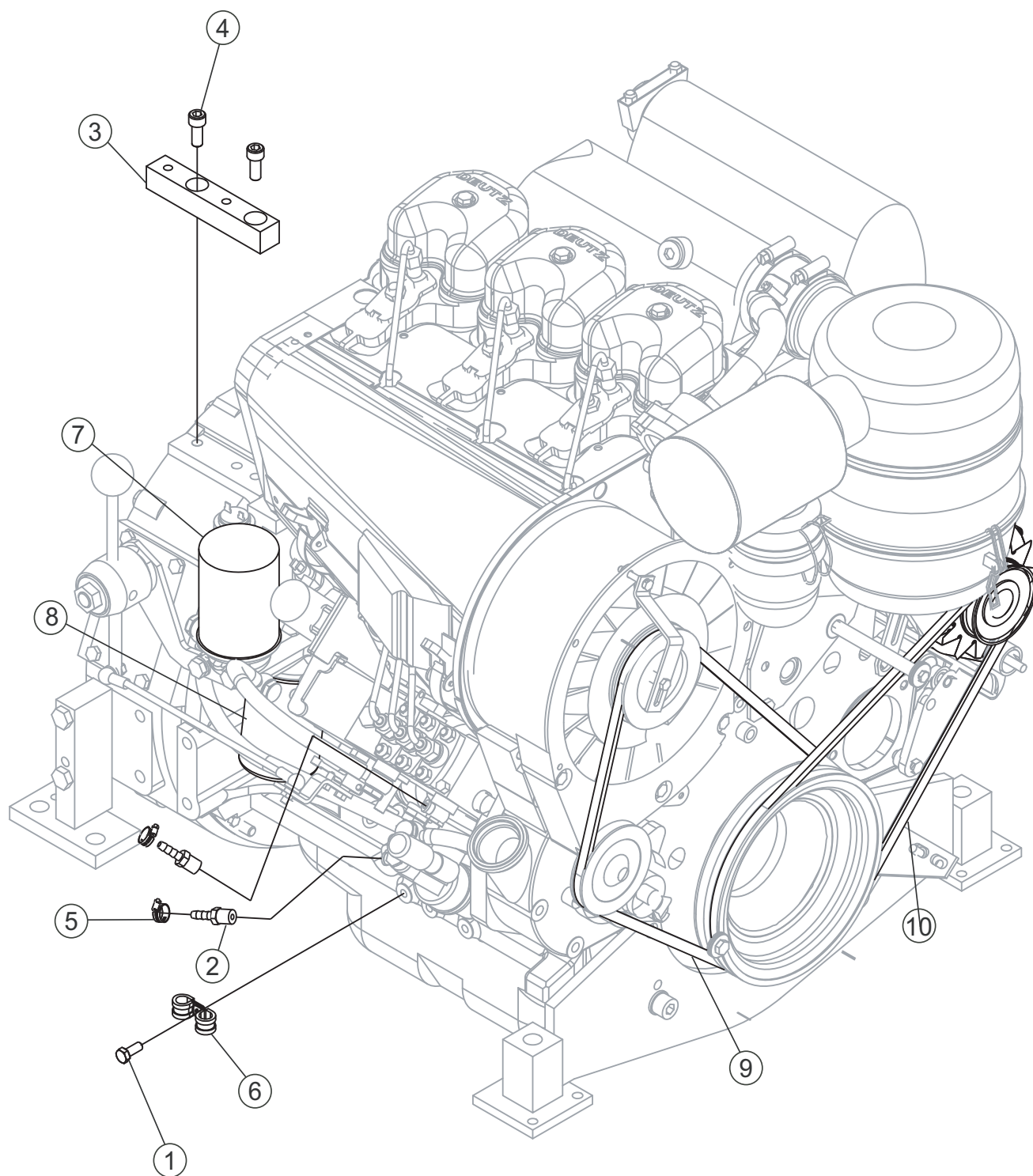


DEUTZ F3L914 ENGINE ASSY. (1)

DEUTZ F3L914 ENGINE ASSY. (1)

<u>NO.</u>	<u>PART NO.</u>	<u>PART NAME</u>	<u>QTY.</u>	<u>REMARKS</u>
1	2866	SCREW, HHC M8-1.25 X 20 MM GR 8.8	1	
2	8151	WASHER FLAT SAE 3/4	4	
3	10136	WASHER, FLAT SAE 3/8	12	
4	13339	WASHER, EXT. SHKP, 5/16	1	
5	16523	SCREW, HHC 3/4-10 X 1-1/2 GD 8	4	
6	17000	ENGINE, DEUTZ F3L914	1	
7	17116	KEY, WOODRUFF #1422-1-7/16X2-3/4	1	
8	17117	WASHER, FLAT SAE 1-1/4"	1	
9	17119	NUT, HEX JAM 1-1/4-12	1	
10	17233	COUPLER, MP PUMP ENG TO BRG HSG	1	
11	17205	PLATE, PUMP FLYWHEEL HSG MOUNT	1	
12	17388	SCREW, SHC M10-1.5X25 GRD 10.9	8	
13	21584	SCREW, HHC M10-1.5 X 35MM GR 10.9	12	
14	28094-001	STRAP-GROUND	1	
15	1180928	STARTER, DEUTZ	1	
16	1182151	ALTERNATOR, DEUTZ	1	

DEUTZ F3L914 ENGINE ASSY. (2)



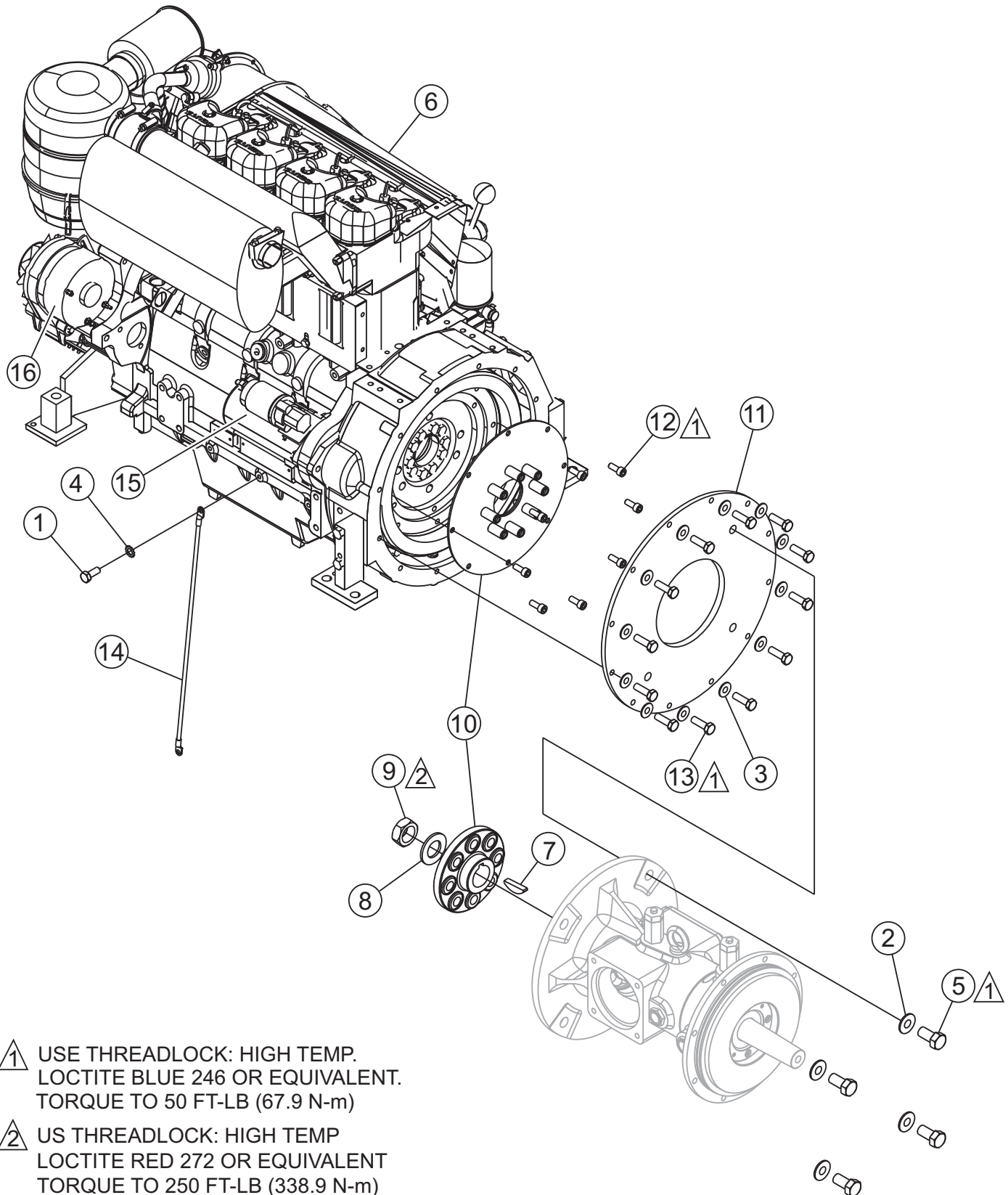
DEUTZ F3L914 ENGINE ASSY. (2)

DEUTZ F3L914 ENGINE ASSY. (2)

<u>NO.</u>	<u>PART NO.</u>	<u>PART NAME</u>	<u>QTY.</u>	<u>REMARKS</u>
1	2866	SCREW, HHC M8-1.25X20 MM GR8.8	1	
2	17206	FITTING, STR 5 BARB X 1/4 MP	2	
3	17331	SPACER, MP PUMP CONTROL PANEL	2	
4	17388	SCREW, SHC M10-1.50X25 GRD 10.9	2	
5	19473	CLAMP, HOSE WORM #2 1/4" TO 5/8"	2	
6	35022	CLAMP, LOOM CUSHIONED #8	2	
7	1181917	FILTER, FUEL	1	
8	1182001	FILTER, OIL	1	
9	2235175	BELT, FAN	1	
10	2235178	BELT, ALTERNATOR	1	

DEUTZ F4L914 ENGINE ASSY. (1)

DEUTZ F4L914 ENGINE ASSY. (1)

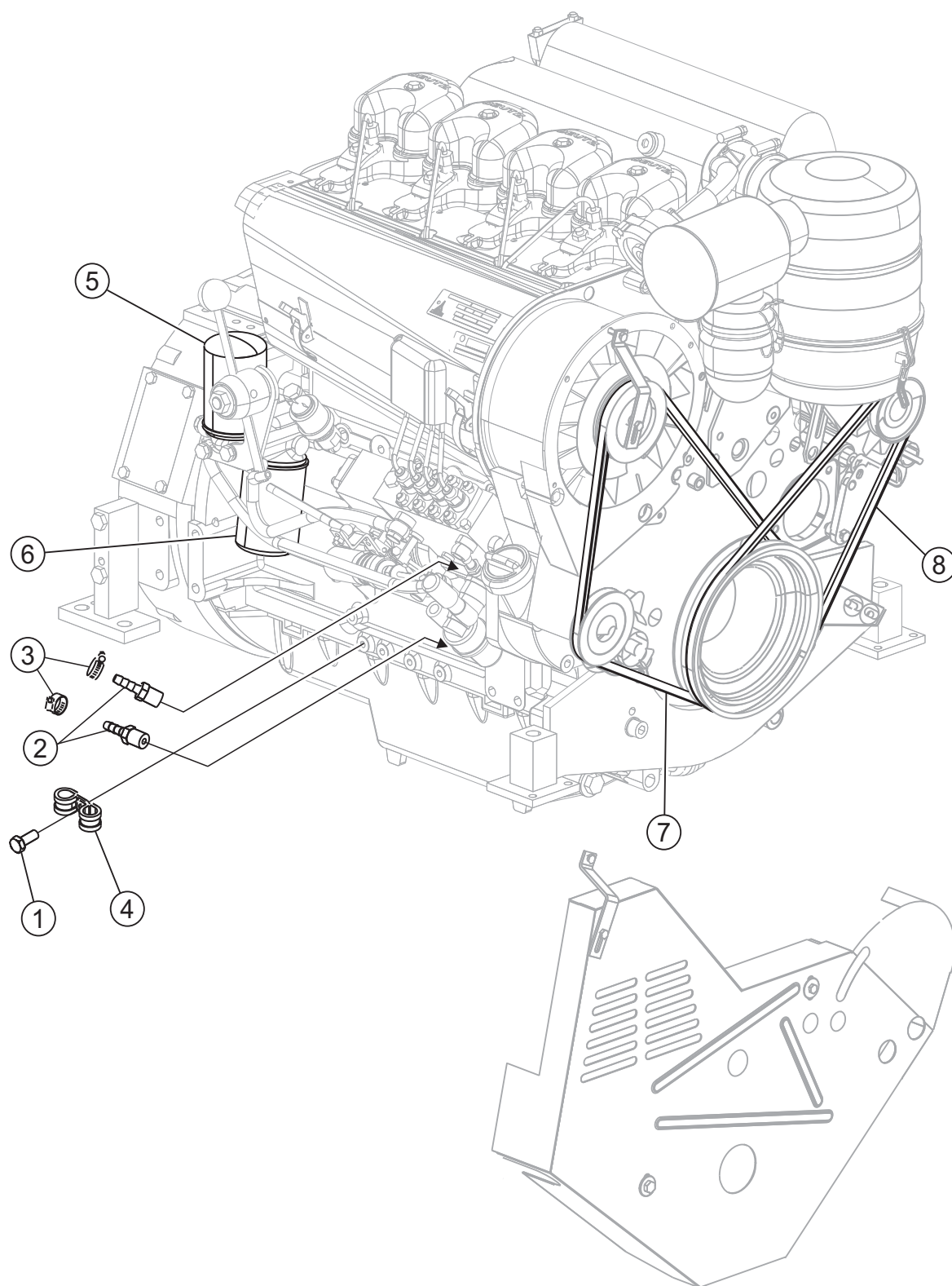


DEUTZ F4L914 ENGINE ASSY. (1)

DEUTZ F4L914 ENGINE ASSY.(1)

<u>NO.</u>	<u>PART NO.</u>	<u>PART NAME</u>	<u>QTY.</u>	<u>REMARKS</u>
1	2866	SCREW, HHC M8-1.25 X 20 MM GR 8.8	1	
2	8151	WASHER FLAT SAE 3/4	4	
3	10136	WASHER, FLAT SAE 3/8	12	
4	13339	WASHER, EXT. SHKP, 5/16	1	
5	16523	SCREW, HHC 3/4-10 X 1-1/2 GD 8	4	
6	17002	ENGINE, DEUTZ F4L914	1	
7	17116	KEY, WOODRUFF #1422-1-7/16X2-3/4	1	
8	17117	WASHER, FLAT SAE 1-1/4"	1	
9	17119	NUT, HEX JAM 1-1/4-12	1	
10	17233	COUPLER, MP PUMP ENG TO BRG HSG	1	
11	17205	PLATE, PUMP FLYWHEEL HSG MOUNT	1	
12	17388	SCREW, SHC M10-1.5X25 GRD 10.9	8	
13	21584	SCREW, HHC M10-1.5 X 35MM GR 10.9	12	
14	28094-001	STRAP-GROUND	1	
15	1180928	STARTER, DEUTZ	1	
16	1182151	ALTERNATOR, DEUTZ	1	

DEUTZ F4L914 ENGINE ASSY. (2)



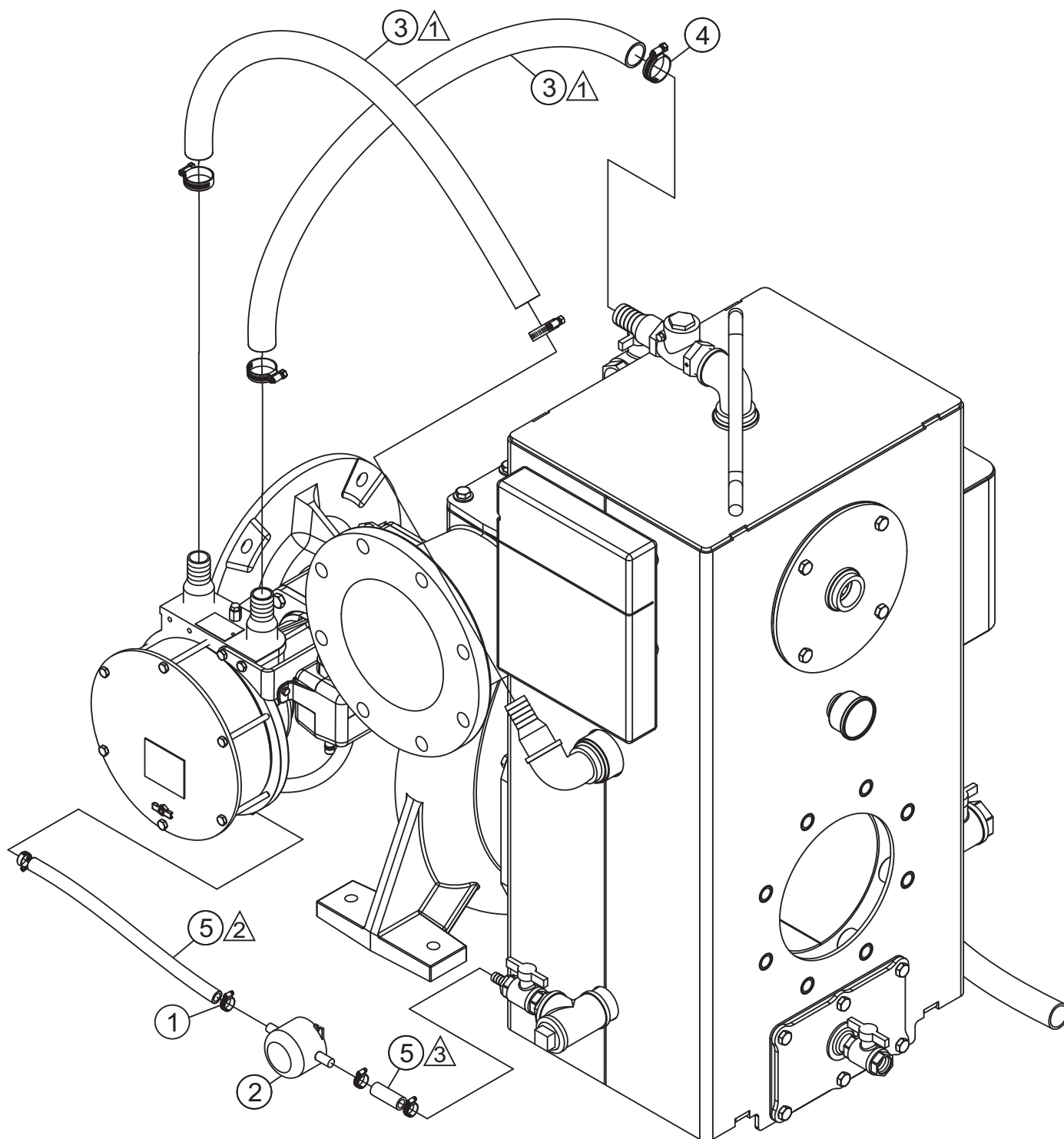
DEUTZ F4L914 ENGINE ASSY. (2)

DEUTZ F4L914 ENGINE ASSY. (2)

<u>NO.</u>	<u>PART NO.</u>	<u>PART NAME</u>	<u>QTY.</u>	<u>REMARKS</u>
1	2866	SCREW, HHC M8-1.25X20 MM GR8.8	1	
2	17206	FITTING, STR 5 BARB X 1/4 MP	2	
3	19473	CLAMP, HOSE WORM #2 1/4" TO 5/8"	2	
4	35022	CLAMP, LOOM CUSHIONED #8	2	
5	1181917	FILTER, FUEL	1	
6	1182001	FILTER, OIL	1	
7	2235175	BELT, FAN	1	
8	2235178	BELT, ALTERNATOR	1	

MQ DRY PRIME PUMP - PRIMING SYSTEM HOSES

PRIMING SYSTEM HOSES



△ P/N 17265: 36 IN (91.44 cm) CLEAR HOSE WIRE REINFORCED

△ P/N 60008: 25 IN (60.96 cm) HOSE, PVC BRAIDED

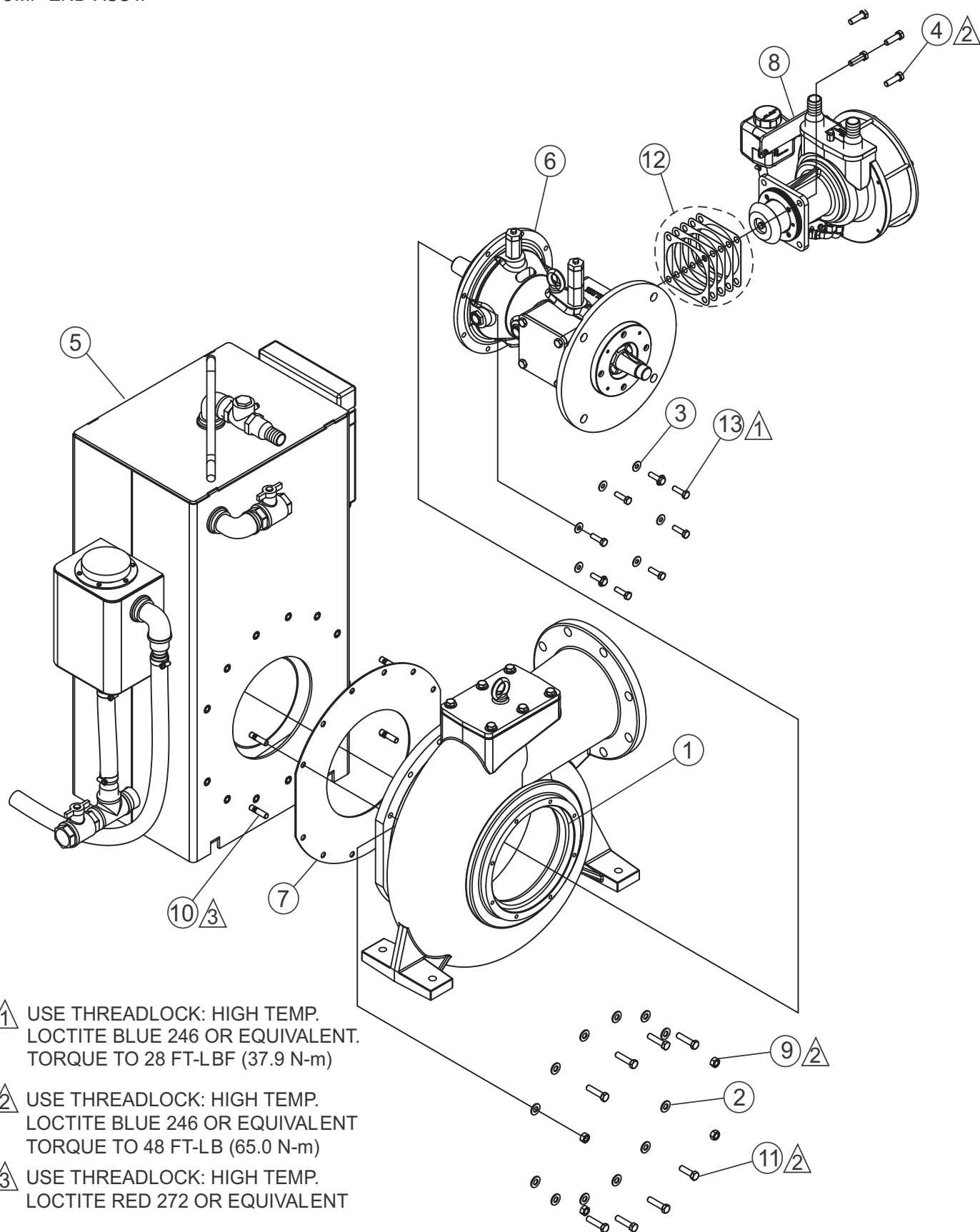
△ P/N 60008: 2 IN (5.08 cm) HOSE, PVC BRAIDED

MQ DRY PRIME PUMP —PRIMING SYSTEM HOSES

PRIMING SYSTEM HOSES

<u>NO.</u>	<u>PART NO.</u>	<u>PART NAME</u>	<u>QTY.</u>	<u>REMARKS</u>
1	15538	CLAMP, HOSE WORM #6	4	
2	17180	FILTER, FLOJET 1740-002	1	
3	17265	HOSE, 1.25ID CLEAR WIRE REINFORCED	72.0 IN.	SOLD IN FOOT LENGTHS
4	26405	CLAMP, HOSE WORM 13/16 - 1-3/4 SIZE 20	4	
5	60088	HOSE, PVC BRAIDED, .5 ID X .75 OD	26.0 IN	SOLD IN FOOT LENGTHS

PUMP END ASSY.



① USE THREADLOCK: HIGH TEMP.
LOCTITE BLUE 246 OR EQUIVALENT.
TORQUE TO 28 FT-LBF (37.9 N-m)

② USE THREADLOCK: HIGH TEMP.
LOCTITE BLUE 246 OR EQUIVALENT
TORQUE TO 48 FT-LB (65.0 N-m)

③ USE THREADLOCK: HIGH TEMP.
LOCTITE RED 272 OR EQUIVALENT

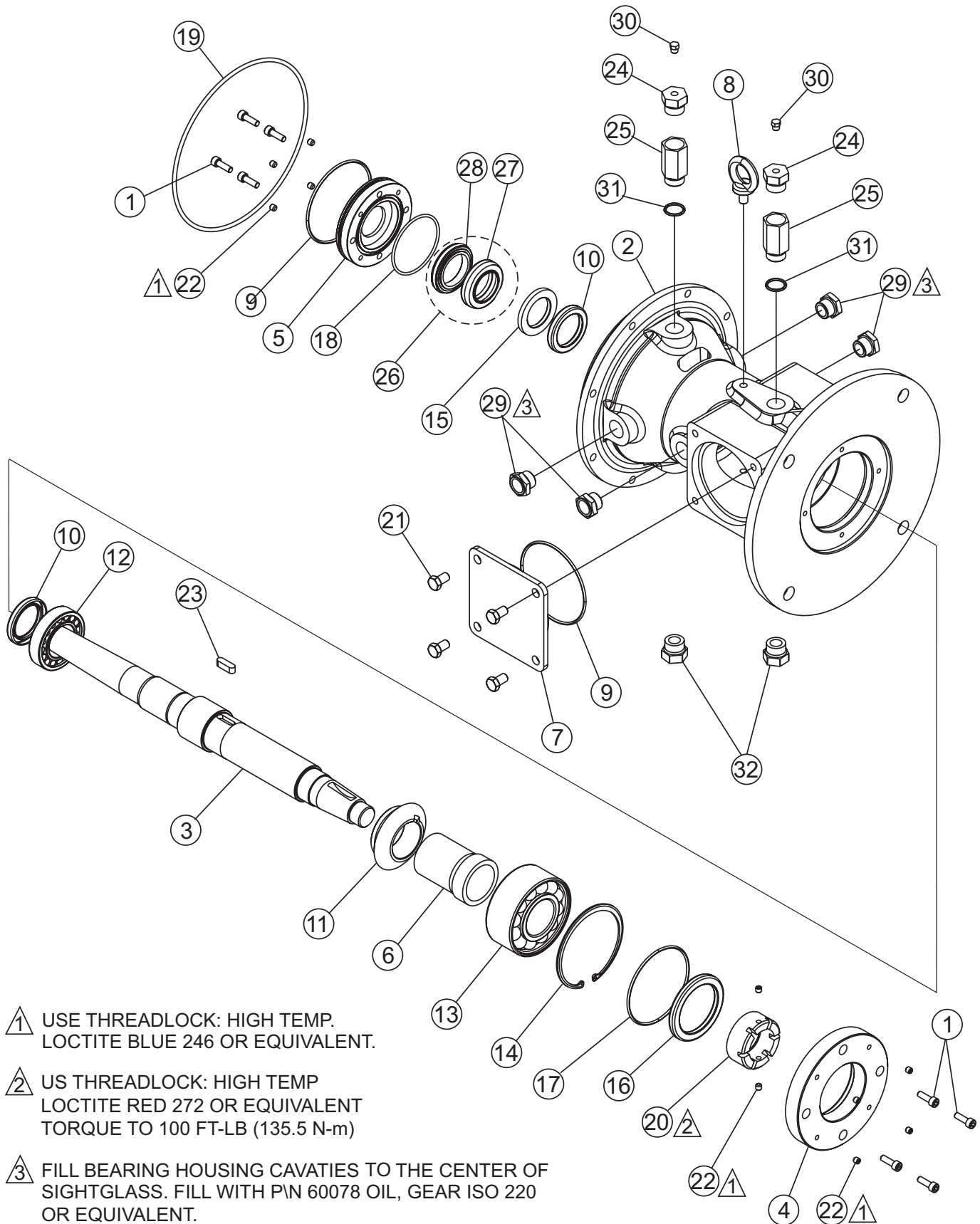
PUMP END ASSY.

PUMP END ASSY.

<u>NO.</u>	<u>PART NO.</u>	<u>PART NAME</u>	<u>QTY.</u>	<u>REMARKS</u>
1		VOLUTE ASSEMBLY	1	SEE PAGES 32-33
2	0447	WASHER, FLAT SAE 1/2	12	
3	10136	WASHER, FLAT SAE 3/8	8	
4	16057	SCREW, HHC M12-1.75 x 40mm	4	
5	17017	PRIMING TANK ASSY., MP PUMP	1	SEE PAGES 38-41
6	17034	HOUSING ASSY. MP PUMP DRIVE SHAFT	1	SEE PAGES 26-27
7	17037	GASKET, VOLUTE TO PRIMING TANK	1	
8	17078	VACUUM PUMP ASSY., 60 CFM	1	SEE PAGES 28-29
9	17114	NUT, HEX FINISH M12-1.750 ZN, DIN934 CL8	4	
10	17172	SCREW, STUD M12-1.75X50 DIN939 CL 8.8	4	
11	17413	SCREW, HHC M12-1.75x45 ZN, DIN931 CL8.8	8	
12	17416	SHIM PACK, VACUUM PUMP BACKLASH	1	
13	21584	SCREW, HHC M10-1.5 X 35MM GR 10.9	8	

BEARING HOUSING ASSY.

BEARING HOUSING ASSY.



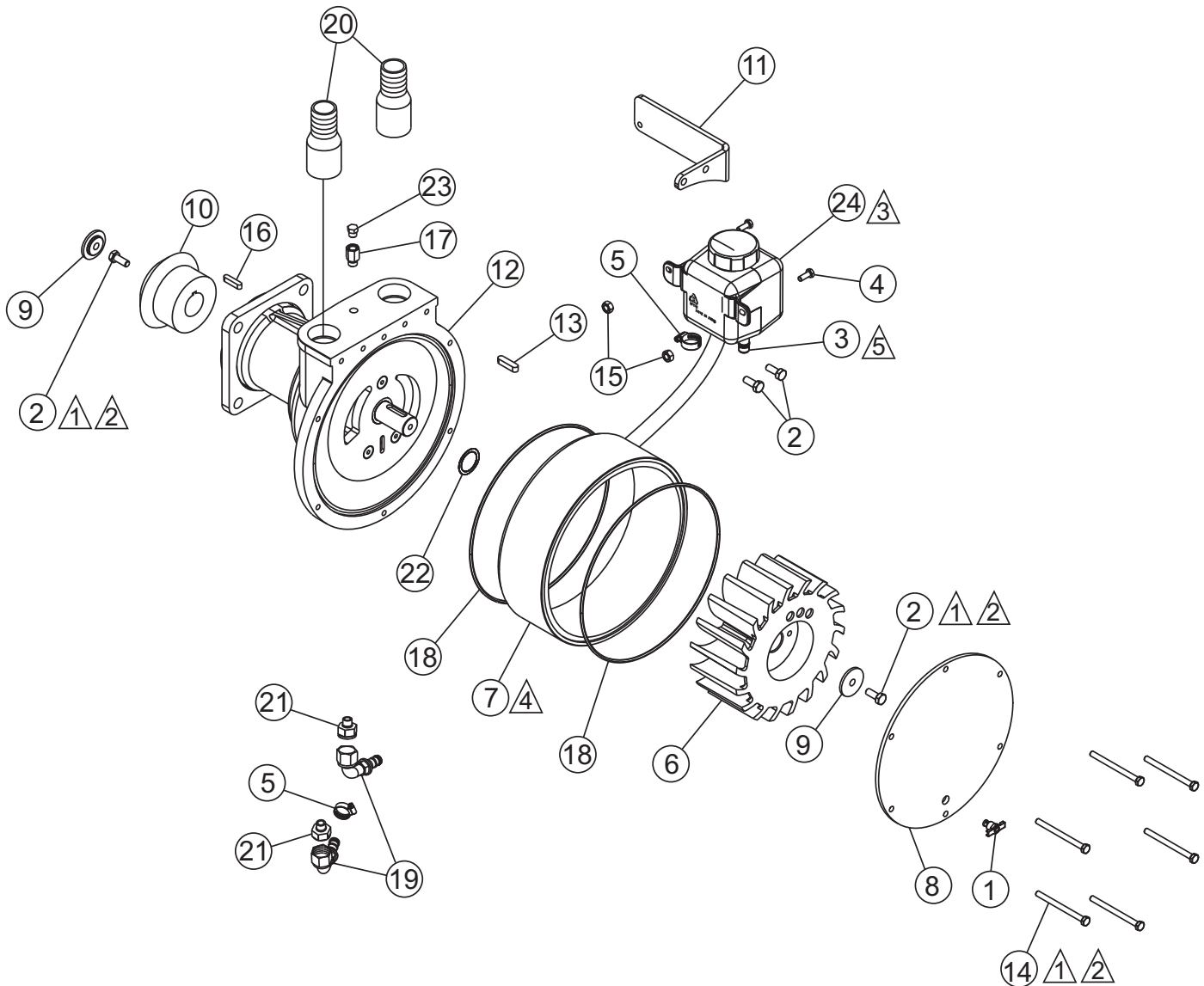
BEARING HOUSING ASSY.

BEARING HOUSING ASSY.

<u>NO.</u>	<u>PART NO.</u>	<u>PART NAME</u>	<u>QTY.</u>	<u>REMARKS</u>
1	11821	SCREW, SHC M8 - 1.25 X 25MM GR 12.9 NP	8	
2	17012	HOUSING, MP PUMP DRIVE SHAFT	1	
3	17013	DRIVE SHAFT, MULTIPURPOSE PUMP	1	
4	17014	END CAP, MP PUMP BEARING HOUSING	1	
5	17015	END CAP, MP PUMP BEARING HSG,VOLUTE	1	
6	17016	SPACER, PUMP GEAR/BEARING	1	
7	17018	PLATE,VACUUM PUMP MOUNT COVER	1	
8	17019	EYE BOLT, M12 X 1.75 ZP	1	
9	17020	O-RING, SIZE 2-248 VITON	2	
10	17021	SEAL, CR 50X70X10 HMSA7 VITON	2	
11	17023	MITER GEAR, 4" PITCH DIA. LH MODIFIED	1	
12	17024	BEARING, SKF NU-210-ECM	1	
13	17025	BEARING, SKF 5311E	1	
14	17026	SNAP RING, ROTORCLIP VHO-475 BEVELED	1	
15	17027	SPACER, MP PUMP MECHANICAL SEAL	1	
16	17028	SEAL, CR 75X100X10 HMSA7 VITON	1	
17	17029	O-RING, SIZE 2-246 VITON	1	
18	17031	O-RING, SIZE 2-237 VITON	1	
19	17032	O-RING, SIZE 2-377 VITON	1	
20	17033	NUT, 48MM THREADED BEARING RETAINER	1	
21	17099	SCREW, HHC M12-1.75X20 ZN DIN933 CL8.8	4	
22	17109	SCREW, SHSCU M8-1.25X8 DIN916	10	
23	17121	KEY, SQ. .375 X 1.25 RD END	1	
24	17173	FITTING, 12MO X 1/8FP	2	
25	17337	EXTENSION, BEARING HOUSING BREATHER	2	
26	17417	BEARING HOUSING, MECH. SEAL KIT	1	INCLUDES ITEMS W/*
27*	17251	MECHANICAL SEAL, MP PUMP DRIVE SHAFT ...	1	REPLACE AS SET
28*	17252	SEAL COUNTERFACE, MP PUMP DRIVE SHAFT	1	REPLACE AS SET
29	21109	SIGHT GLASS, DASH 12 ORB STEEL	4	
30	21218	VENT, AIR GEAR BOX	2	
31	25666	O-RING, SIZE 3-912 12 BOSS	2	
32	368657	FITTING, PLUG 12MO	2	

VACUUM PUMP ASSY.

VACUUM PUMP ASSY.



① USE THREADLOCK: HIGH TEMP LOCTITE BLUE 246 OR EQUIVALENT.

② TORQUE TO 14 FT. LBS (18.9 N-m).

③ FILL ALL OIL RESERVOIRS WITH FILL WITH P\N 60078 OIL, GEAR ISO 220 OR EQUIVALENT.

④ ROTATE ECCENTRIC HOUSING TO OBTAIN. 006" CLEARANCE BETWEEN IMPELLER AND HOUSING. ROTATE IMPELLER AFTER SETTING CLEARANCE TO ENSURE IMPELLER DOES NOT RUB.

⑤ SILICONE SCREW INTO PLACE TO BLOCK EXTRA PORT ON RESERVOIR.

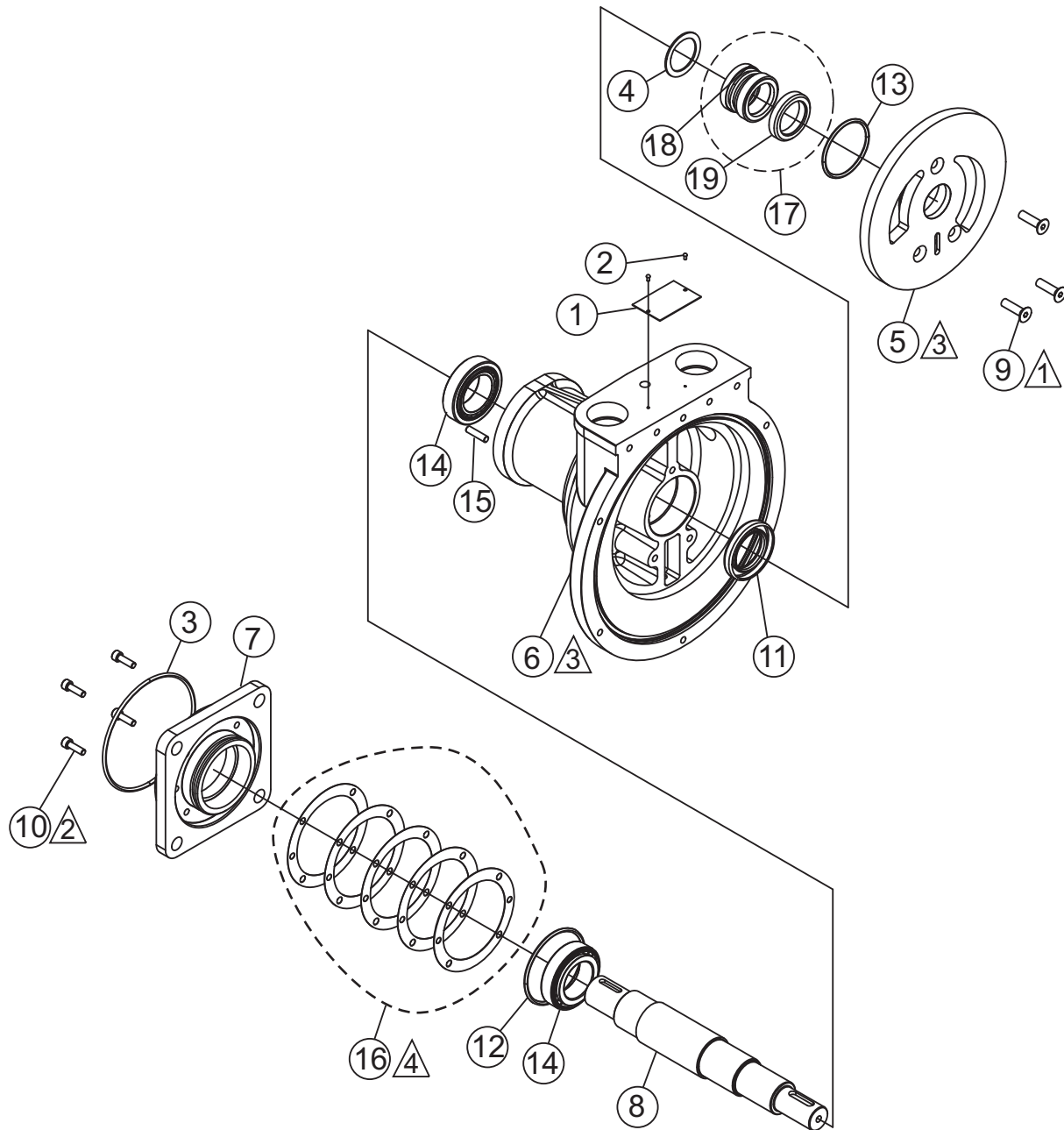
VACUUM PUMP ASSY.

VACUUM PUMP ASSY.

<u>NO.</u>	<u>PART NO.</u>	<u>PART NAME</u>	<u>QTY.</u>	<u>REMARKS</u>
1	2478	FITTING, PETCOCK RAD DRAIN 1/4MP	1	
2	2866	SCREW, HHC M8 - 1.25 X 20MM	4	
3	11821	SCREW, SHC M8 - 1.25 X 25MM GR 12.9 NP	1	
4	12464	SCREW, HHC M6 - 1.0 X 16MM	2	
5	15538	CLAMP, HOSE WORM #6	2	
6	17080	IMPELLER, MP 60 CFM VACUUM PUMP	1	
7	17081	ECCENTRIC HOUSING, 60 CFM VACUUM PUMP	1	
8	17082	COVER PLATE, VACUUM PUMP IMPELLER	1	
9	17083	WASHER, MP VACUUM PUMP BEVEL GEAR	2	
10	17085	MITER GEAR, BOSTON GEAR HLSK118Y-R	1	
11	17086	BRACKET, VACUUM PUMP OIL RESERVOIR	1	
12	17087	HOUSING ASSY., MP VACUUM PUMP	1	
13	17096	KEY, 8X7X32 MM DIN 6885A	1	
14	17104	SCREW, HHC M8-1.25 X 100 ZN	6	
15	17113	NUT, HEX FINISH M6-1.00 ZN	2	
16	17120	KEY, SQ .25X1.125 RD END	1	
17	17136	FITTING, 4MO X 1/8FP	1	
18	17143	O-RING, SIZE 2-271 VITON	2	
19	17204	FITTING, 90 8 FJ X 8 BARB	2	
20	17212	FITTING, STR 1.25MPX1.25BARB, GALV	2	
21	17299	FITTING, STR 8MJ - 4MO	2	
22	17420	SHIM KIT, VACUUM PUMP IMPELLER	1	
23	21218	VENT, AIR, GEAR BOX	1	
24	37213	RESERVOIR, 350ML, HYDROGEAR 71327	1	

VAC. PUMP BEARING HOUSING ASSY.

VAC. PUMP BEARING HOUSING ASSY.



① USE THREADLOCK: HIGH TEMP LOCTITE BLUE 246 OR EQUIVALENT.
TORQUE TO 14 FT-LBS. (18.9 N-m).

② TORQUE TO 8 FT-LBS (10.8 N-m).

③ APPLY LOCTITE 518, FLANGE SEALANT TO MATING SURFACES OF BEARING HOUSING AND PORT PLATE.

④ SHIM ENDCAP AS NECESSARY, SHAFT SHOULD HAVE ZERO ENDPLAY, BE ABLE TO ROTATE WITH FINGERS, AND HAVE NO "FREE" SPIN

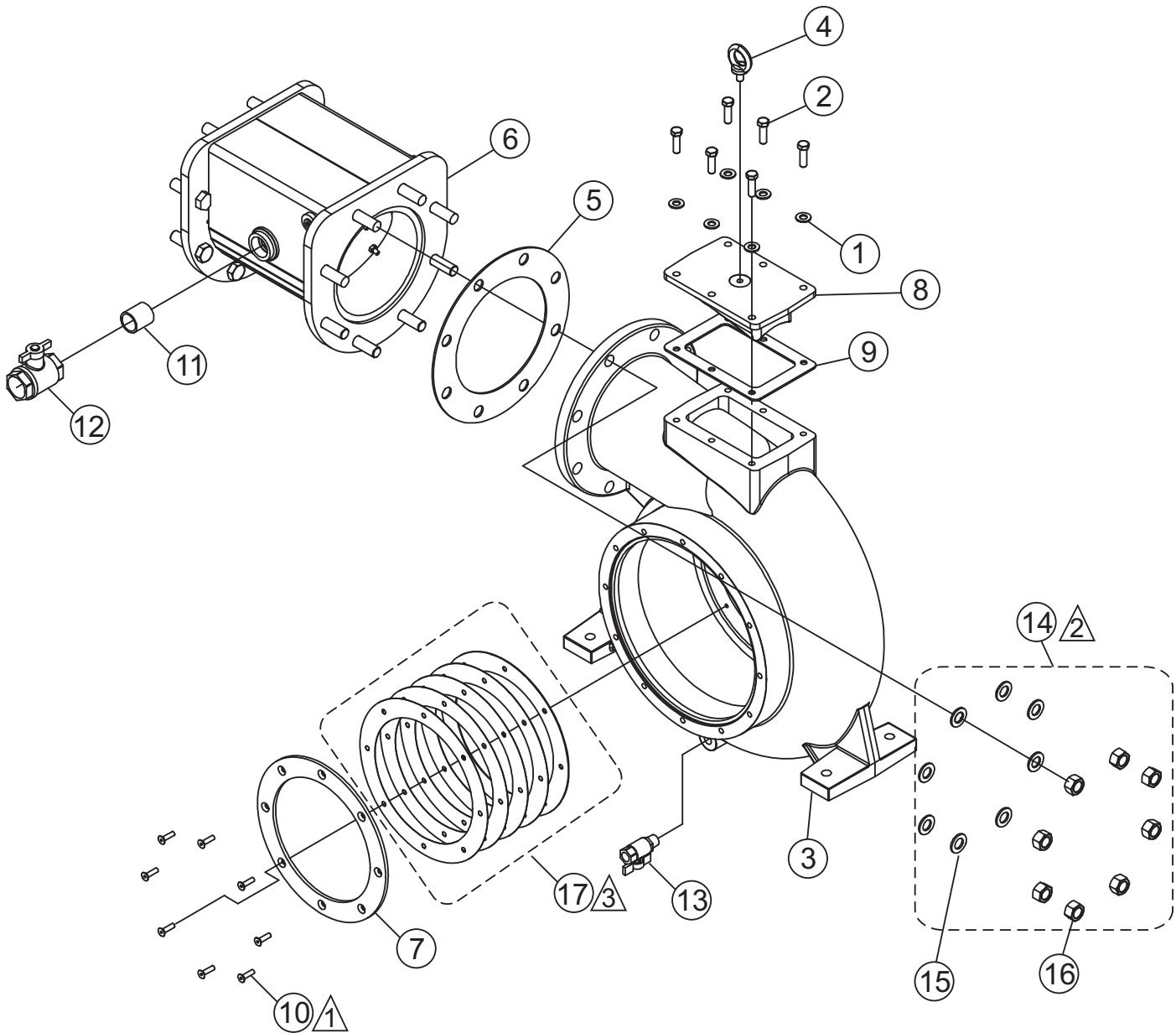
VAC. PUMP BEARING HOUSING ASSY.

VAC. PUMP BEARING HOUSING ASSY.

<u>NO.</u>	<u>PART NO.</u>	<u>PART NAME</u>	<u>QTY.</u>	<u>REMARKS</u>
1		DECAL, MQT SERIAL PLATE, NON CE	1	CONTACT SERVICE DEPT.
2	4014	SCREW, #2 3/16 P-K TYPE U DRIVE	2	
3	17020	O-RING, SIZE 2-248 VITON	1	
4	17058	SPACER, MECHANICAL SEAL LOCATING	1	
5	17079	PORT PLATE, MP VACUUM PUMP	1	
6	17088	BEARING HOUSING, MP VACUUM PUMP	1	
7	17089	END CAP, VACUUM PUMP BEARING HOUSING	1	
8	17090	DRIVE SHAFT MP VACUUM PUMP	1	
9	17098	SCREW, FHSC M8-1.25X30 SS, DIN7991	3	
10	17108	SCREW, SHC M6-1.00X20, NYTEMP PATCH	4	
11	17139	SEAL, CR 40X62X10 HMSA7 VITON	1	
12	17140	O-RING, SIZE 2-234 VITON	1	
13	17141	O-RING, SIZE 2-228 VITON	1	
14	17142	BEARING, SKF 32008 X/Q	2	
15	17389	PIN, SPIRAL 1/4X1 HD	2	
16	17418	SHIM PACK, VACUUM PUMP PRE-LOAD	1	
17	17419	KIT, VACUUM PUMP MECH. SEAL ASSY.	1	INCLUDES ITEMS W/*
18*	17253	MECHANICAL SEAL, MP VACUUM PUMP	1	REPLACE AS SET
19*	17254	SEAL COUNTERFACE, MP VACUUM PUMP	1	REPLACE AS SET

VOLUTE AND CHECK VALVE ASSY.

VOLUTE AND CHECK VALVE ASSY.



① USE THREADLOCK: HIGH TEMP LOCTITE BLUE 246 OR EQUIVALENT.
TORQUE TO 14 FT-LBS. (18.9 N-m).

② USE THREADLOCK: HIGH TEMP LOCTITE BLUE 272 OR EQUIVALENT.

③ SHIM AS NECCESARY TO OBTAIN .020" +/- .010" CLEARANCE BETWEEN IMPELLER AND WEAR PLATE

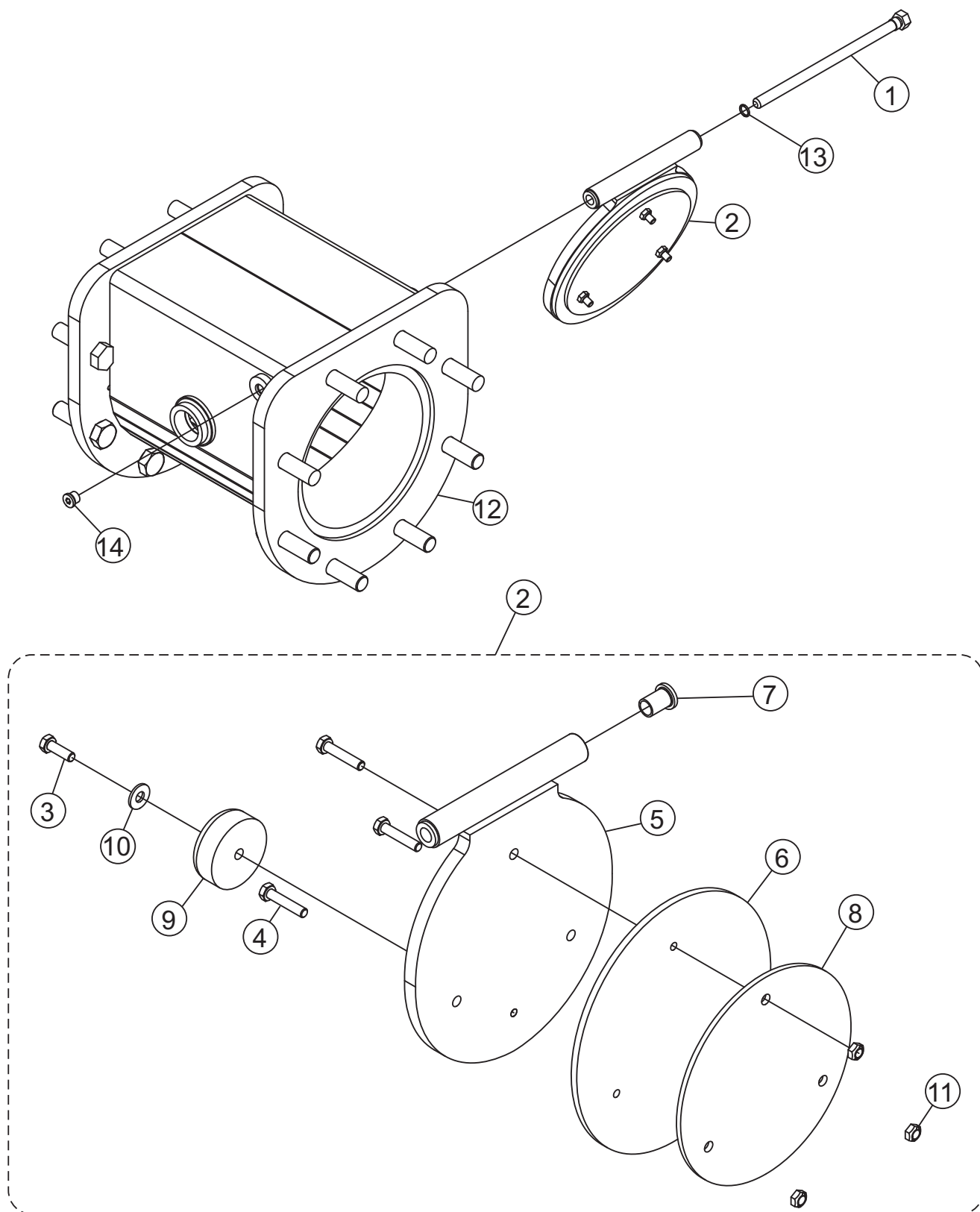
VOLUTE AND CHECK VALVE ASSY.

VOLUTE AND CHECK VALVE ASSY.

<u>NO.</u>	<u>PART NO.</u>	<u>PART NAME</u>	<u>QTY.</u>	<u>REMARKS</u>
1	0447	WASHER, FLAT 1/2 SAE	6	
2	16057	SCREW, HHC M12 - 1.75 X 40MM	6	
3	17004	VOLUTE, MULTIPURPOSE PUMP	1	
4	17019	EYE BOLT, M12 X 1.75 ZP	1	
5	17040	GASKET, 8" FLANGE	1	
6	17062	CHECK VALVE ASSY., PUMP DISCHARGE	1	
7	17093	REAR WEAR RING, MP PUMP 1/4"	1	CONTACT PARTS DEPT.
	17396	REAR WEAR RING, MP PUMP 3/16"	1	W/ SERIAL NUMBER TO
			DETERMINE PROPER P/N
8	17094	VOLUTE ACCESS CAP	1	
9	17095	GASKET, VOLUTE CAP	1	
10	17098	SCREW, FHSC M8 - 1.25 X 30 SS DIN 7991	8	
11	17214	FITTING, NIPPLE 3/4 MP CLOSE, GALV	1	UP TO S/N 170040
	17215	FITTING, NIPPLE 1-1/4 MP CLOSE, GALV	1	S/N 170041 AND UP
12	17218	VALVE, BALL 3/4 FP X 3/4 FP BRASS	1	UP TO S/N 170040
	17217	VALVE, BALL 1-1/4 FP X 1-1/4 FP BRASS	1	S/N 170041 AND UP
13	17244	VALVE, BALL 1/2 MNPT X FNPT BRASS	1	
14	17335	KIT DISCHARGE HARDWARE, MP PUMP	1	INCLUDES ITEMS W/*
15*	17112	WASHER FLAT 20MM ZN	8	
16*	17343	NUT, HEX FINISH M20-2.5 ZP	8	
17	17421	SHIM PACK, REAR WEAR RING	1	

CHECK VALVE ASSY.

CHECK VALVE ASSY.



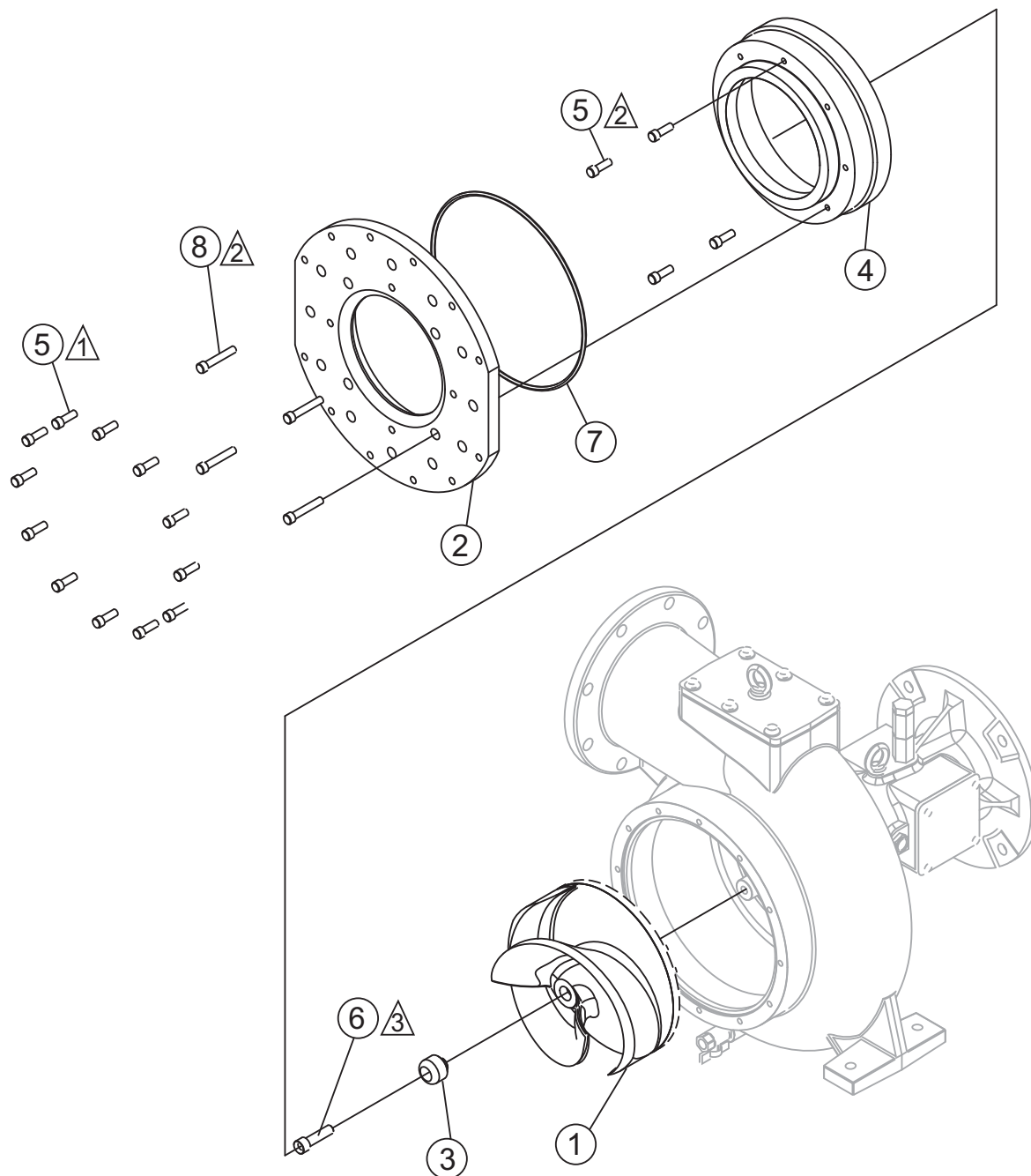
CHECK VALVE ASSY.

CHECK VALVE ASSY.

<u>NO.</u>	<u>PART NO.</u>	<u>PART NAME</u>	<u>QTY.</u>	<u>REMARKS</u>
1	17063	PIN, DISCHARGE CHECK VALVE PIVOT	1	
2	17076	VALVE PLATE ASM, PUMP DISCHARGE	1	INCLUDES ITEMS W/*
3*	1605	SCREW, HHC M8-1.25 X 25MM	1	
4*	1928	SCREW, HHC M8-1.25 X 40MM	3	S\N 170043 AND UP
	10790	SCREW, HHC M6-1.00 X 30MM	3	UP TO S\N 170042
5*	17070	VALVE PLATE W/A, PUMP DISCHARGE	1	
6*	17073	RUBBER SEAL, DISCHARGE CHECK VALVE	1	
7*	17074	BUSHING, BRONZE .5 X .625 X 1" W/FLANGE	2	
8*	17075	WEAR PLATE, DISCHARGE CHECK VALVE	1	
9*	17336	BUMPER, MP PUMP CHECK VALVE	1	
10*	19470	WASHER, FLAT USS 5/16	1	
11*	20440	NUT, HEX LOCK M8-1.25	3	S\N 170043 AND UP
12	17077	CHECK VALVE HOUSING W/A	1	
13	17138	O-RING, SIZE 3-906 VITON	1	
14	368699	FITTING, PLUG 6MO HEX SKT HD	1	

IMPELLER AND WEAR PLATE ASSY.

IMPELLER AND WEAR PLATE ASSY.



① USE THREADLOCK: HIGH TEMP.
LOCTITE BLUE 246 OR EQUIVALENT.
TORQUE TO 60 FT-LBF (81.3 N-m)

② USE ANTI-SEIZE OR EQUIVALENT
TORQUE TO 60 FT-LBF (81.3 N-m)

③ USE THREADLOCK: HIGH TEMP.
LOCTITE RED 272 OR EQUIVALENT.
TORQUE TO 250 FT-LBF (338.9 N-m)

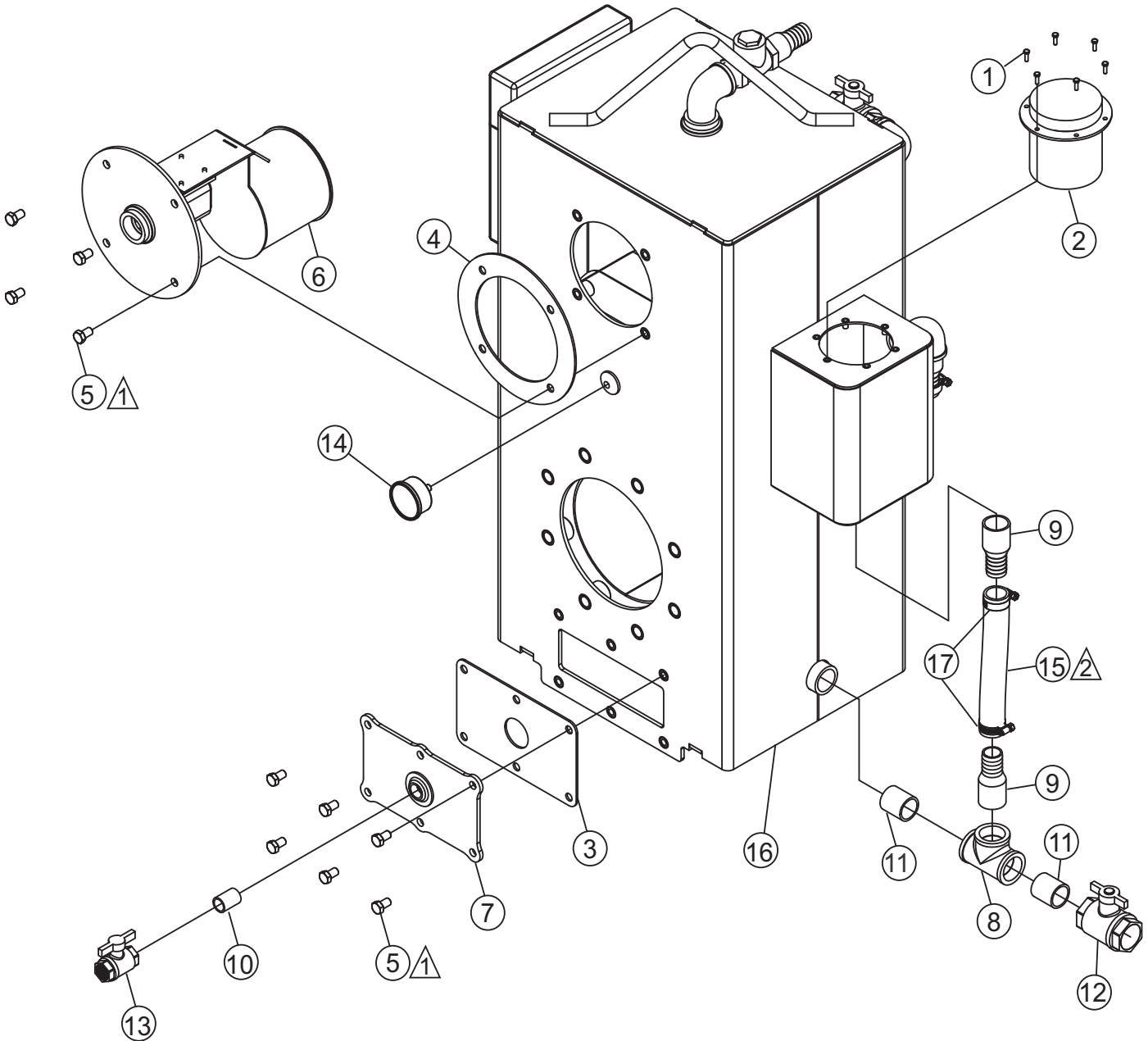
IMPELLER AND WEAR PLATE ASSY.

IMPELLER AND WEAR PLATE ASSY.

<u>NO.</u>	<u>PART NO.</u>	<u>PART NAME</u>	<u>QTY.</u>	<u>REMARKS</u>
1	17006	IMPELLER, 285 X 80 PUMP	1	FITS MP150S & MP200
	17008	IMPELLER, 300 X 85 PUMP	1	FITS MP200S
2	17011	SEPERATOR FLANGE, MP PUMP	1	
3	17049	CAP, MP PUMP IMPELLER	1	
4	17092	FRONT WEAR PLATE, MP PUMP	1	FITS MP200S
	17386	FRONT WEAR PLATE, MP PUMP	1	FITS MP150S & MP200
5	17105	SCREW, SHC M12-1.75X35 SS, DIN912	16	
6	17107	SCREW, SHC M16-2.00X60, DIN912 CL12.9	1	
7	17144	O-RING, SIZE 2-457 VITON	1	
8	17332	SCREW, SHC M12-1.75X70 SS, DIN912	4	

PRIMING TANK ASSY. (1)

PRIMING TANK ASSY. (1)



1 USE THREADLOCK: HIGH TEMP.
LOCTITE BLUE 246 OR EQUIVALENT.
TORQUE TO 50 FT-LBF (67.9 N·m)

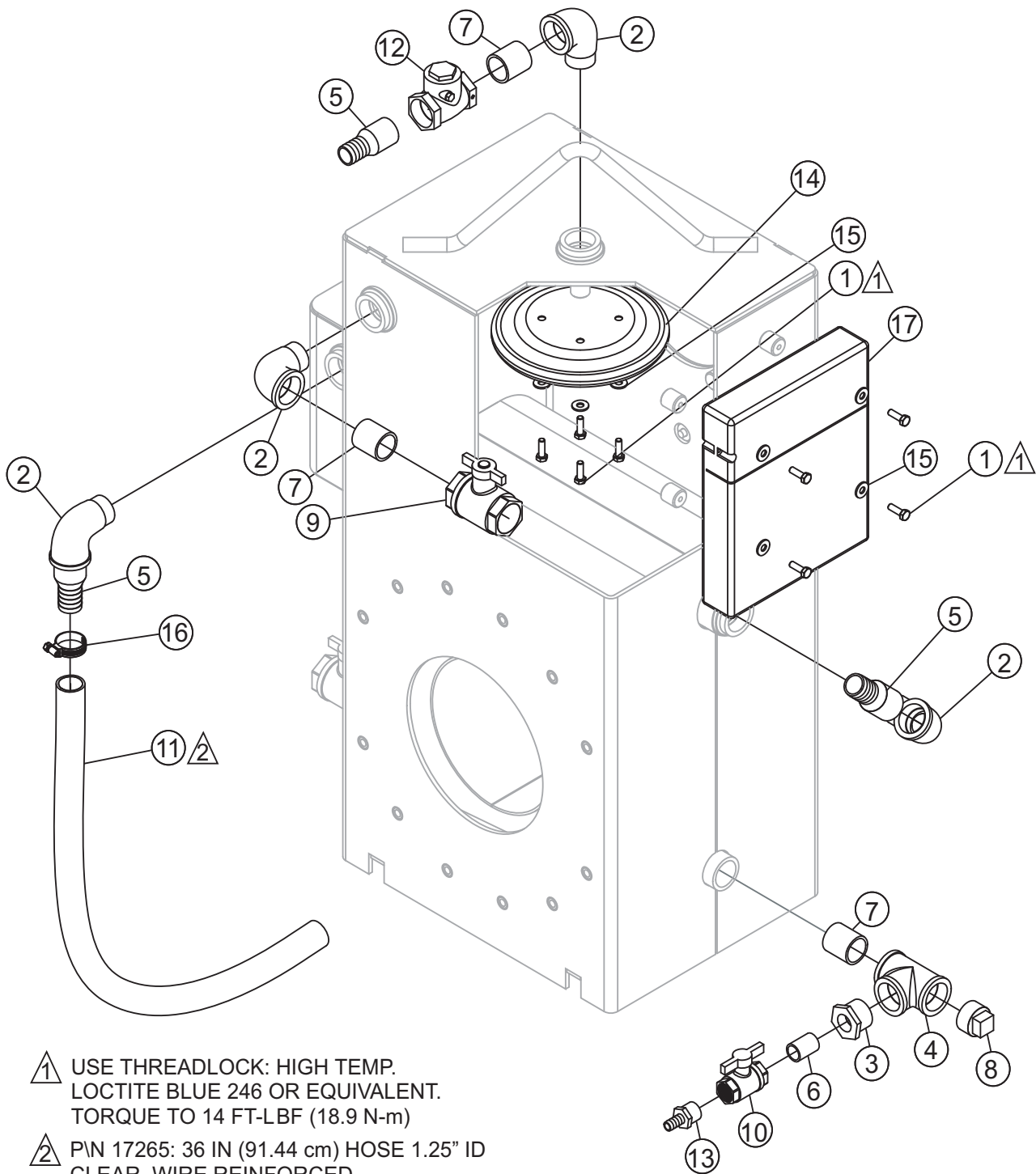
2 P\N 17265: 10.5" (26.67 cm) CLEAR
HOSE WIRE REINFORCED

PRIMING TANK ASSY. (1)

PRIMING TANK ASSY. (1)

<u>NO.</u>	<u>PART NO.</u>	<u>PART NAME</u>	<u>QTY.</u>	<u>REMARKS</u>
1	11644	SCREW, HHC 10-32 X 5/8, W/WSHR PLATED	6	
2	17036	FILLER CAP ASSY., LENZ PN FCS-1303-24	1	
3	17038	GASKET, PRIMING TANK ACCESS PANEL	1	
4	17039	GASKET, PRIMING TANK FLOAT VALVE	1	
5	17099	SCREW, HHC M12-1.75X20 ZN, DIN933 CL8.8	10	
6	17122	FLOAT VALVE ASSY, MP PUMP	1	SEE PAGES 42-43
7	17137	ACCESS PANEL W/A, MP PUMP, PRIMING TANK	1	
8	17211	FITTING, TEE 1.25FPX1.25FPX1.25FP, GALV	1	
9	17212	FITTING, STR 1.25MPX1.25BARB, GALV	5	
10	17214	FITTING, NIPPLE 3/4 MP CLOSE, GALV	1	
11	17215	FITTING, NIPPLE 1-1/4 MP CLOSE, GALV	2	
12	17217	VALVE, BALL 1-1/4FPX1-1/4FP, BRASS	1	
13	17218	VALVE, BALL 3/4FPX3/4FP, BRASS	2	
14	17219	GAUGE, 0 TO -30INHG, .25 MP	1	
15	17265	HOSE 1.25ID CLEAR, WIRE REINFORCED		SOLD IN FOOT LENGTHS
16	17438	PRIMING TANK W/A, SERVICE ASSY.	1	
17	26405	CLAMP, HOSE WORM 13/16 - 1-3/4 SIZE 20	2	

PRIMING TANK ASSY. (2)



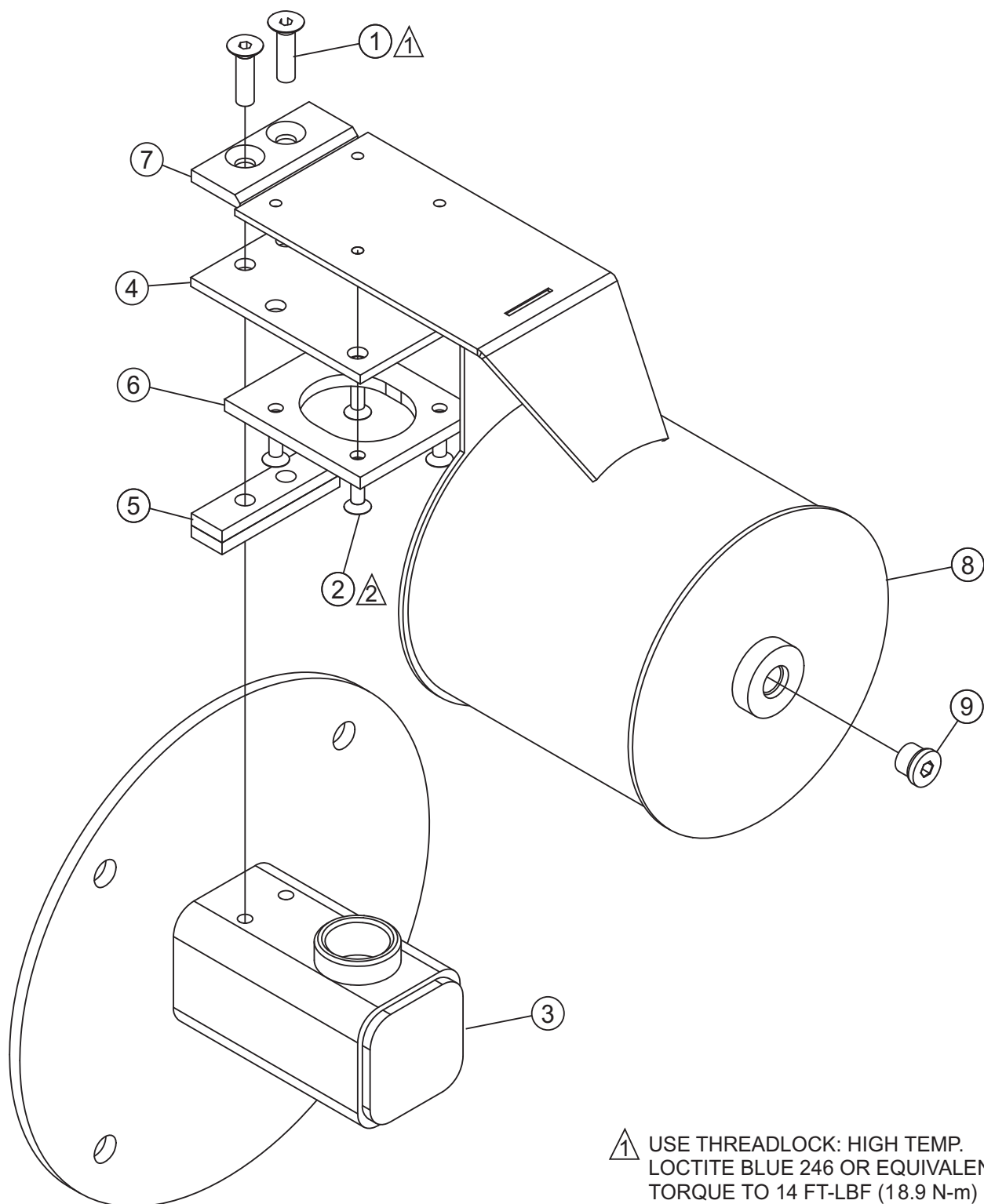
PRIMING TANK ASSY. (2)

PRIMING TANK ASSY. (2)

<u>NO.</u>	<u>PART NO.</u>	<u>PART NAME</u>	<u>QTY.</u>	<u>REMARKS</u>
1	1605	SCREW, HHC M8-1.25 X 25MM	8	
2	17208	FITTING, 90 1.25MP X 1.25FP GALV	4	
3	17209	FITTING, STR 1.25MP X .75FP, GALV	1	
4	17211	FITTING, TEE 1.25FPX1.25FPX1.25FP, GALV	1	
5	17212	FITTING, STR 1.25MPX1.25BARB, GALV	3	
6	17214	FITTING, NIPPLE 3/4 MP CLOSE, GALV	2	
7	17215	FITTING, NIPPLE 1-1/4 MP CLOSE, GALV	3	
8	17216	FITTING, PLUG 1.25MP SQ HD, GALV	1	
9	17217	VALVE, BALL 1-1/4FPX1-1/4FP, BRASS	2	
10	17218	VALVE, BALL 3/4FPX3/4FP, BRASS	2	
11	17265	HOSE 1.25ID CLEAR, WIRE REINFORCED		SOLD IN FOOT LENGTHS
12	17266	FITTING, 1.25FP X 1.25FP CHECK VALVE	1	
13	17291	FITTING, 3/4 MP X 1/2 FP, BRASS	1	
14	17387	BAFFLE, PRIMING TANK EXHAUST	1	
15	19470	WASHER, FLAT 5/16 USS	8	
16	26405	CLAMP, HOSE WORM 13/16 X 1-3/4 SIZE 20	1	
17	29057	DOCUMENT BOX	1	

MQ DRY PRIME PUMP —FLOAT VALVE ASSY.

FLOAT VALVE ASSY.



△ 1 USE THREADLOCK: HIGH TEMP.
LOCTITE BLUE 246 OR EQUIVALENT.
TORQUE TO 14 FT-LBF (18.9 N-m)

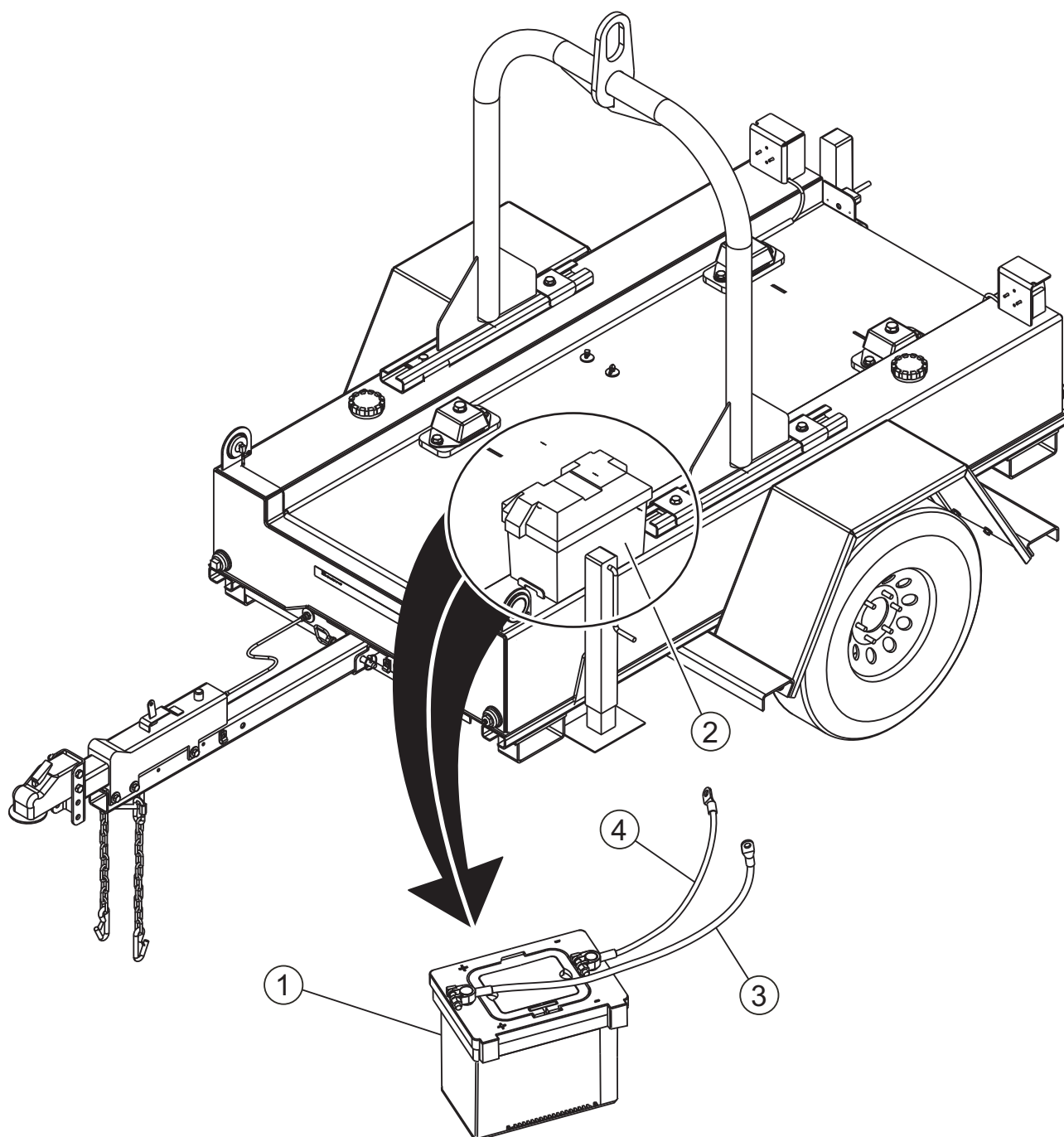
△ 2 USE THREADLOCK: HIGH TEMP.
LOCTITE BLUE 246 OR EQUIVALENT.
TORQUE TO 10 FT-LBF (13.5 N-m)

FLOAT VALVE ASSY.

FLOAT VALVE ASSY.

<u>NO.</u>	<u>PART NO.</u>	<u>PART NAME</u>	<u>QTY.</u>	<u>REMARKS</u>
1	17098	SCREW, FHSC M8-1.25X30 SS, DIN7991	2	
2	17115	SCREW, FHSC M6-1.00X20 SS, DIN7991	4	
3	17123	BASE W/A, MP PUMP, FLOAT VALVE	1	
4	17125	HINGE, MP PUMP, FLOAT VALVE	1	
5	17126	SHIM, FLOAT VALVE HINGE	2	
6	17127	BACKING PLATE, FLOAT VALVE HINGE	1	
7	17128	SHIM, FLOAT VALVE HINGE	1	
8	17406	MP PUMP FLOAT ARM W/A	1	
9	368699	FITTING, PLUG 6MO HEX SKT HD	1	

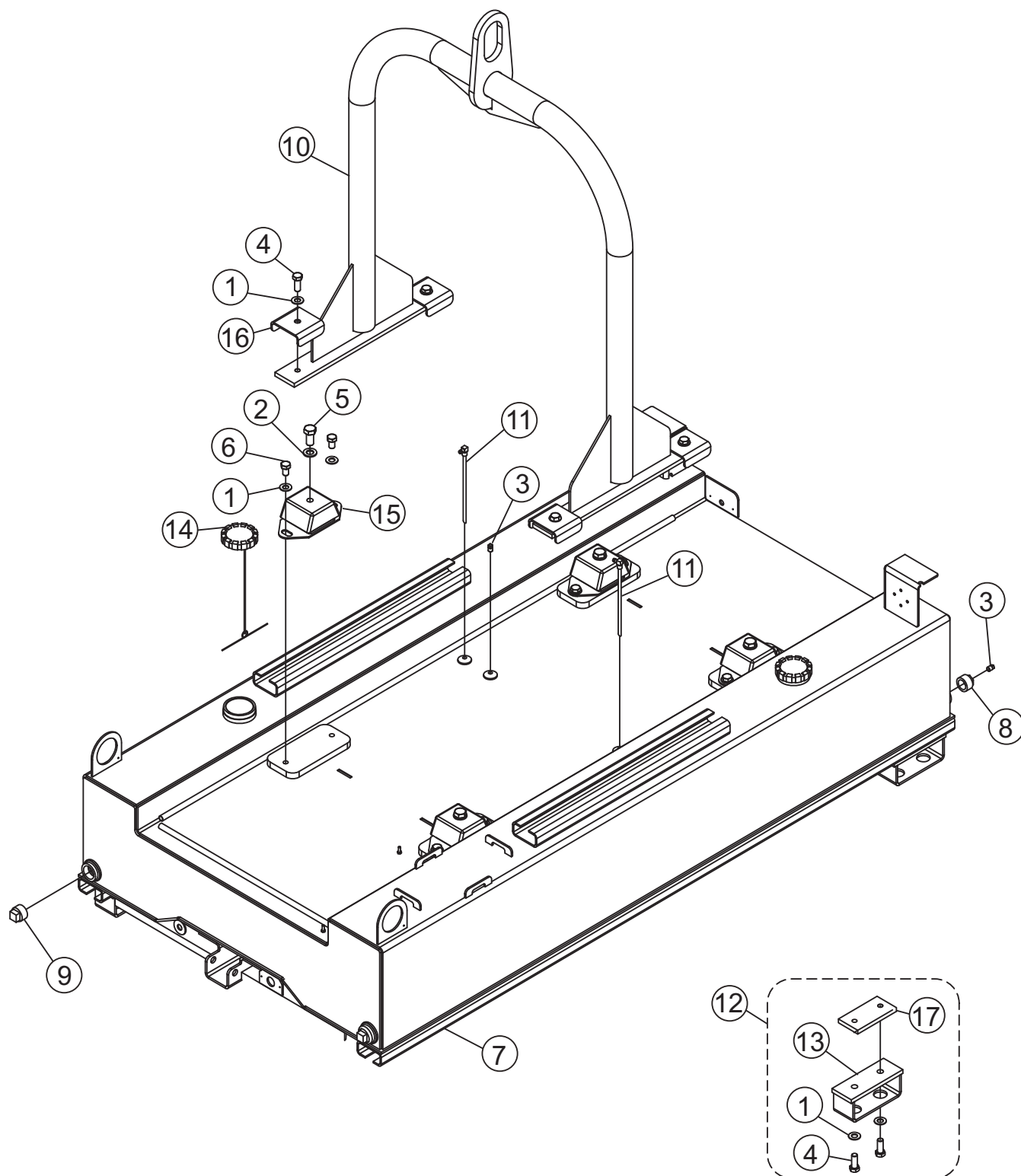
BATTERY ASSY.



BATTERY ASSY.

<u>NO.</u>	<u>PART NO.</u>	<u>PART NAME</u>	<u>QTY.</u>	<u>REMARKS</u>
1	17292	BATTERY, 12V GROUP 31 1125CCA	1	
2	17269	BATTERY BOX, GRP 27	1	
3	17294	CABLE, BATTERY POS 0 GA X 31" POST	1	
4	17293	CABLE, BATTERY NEG 0 GA X 24" POST	1	

FUEL TANK ASSY.



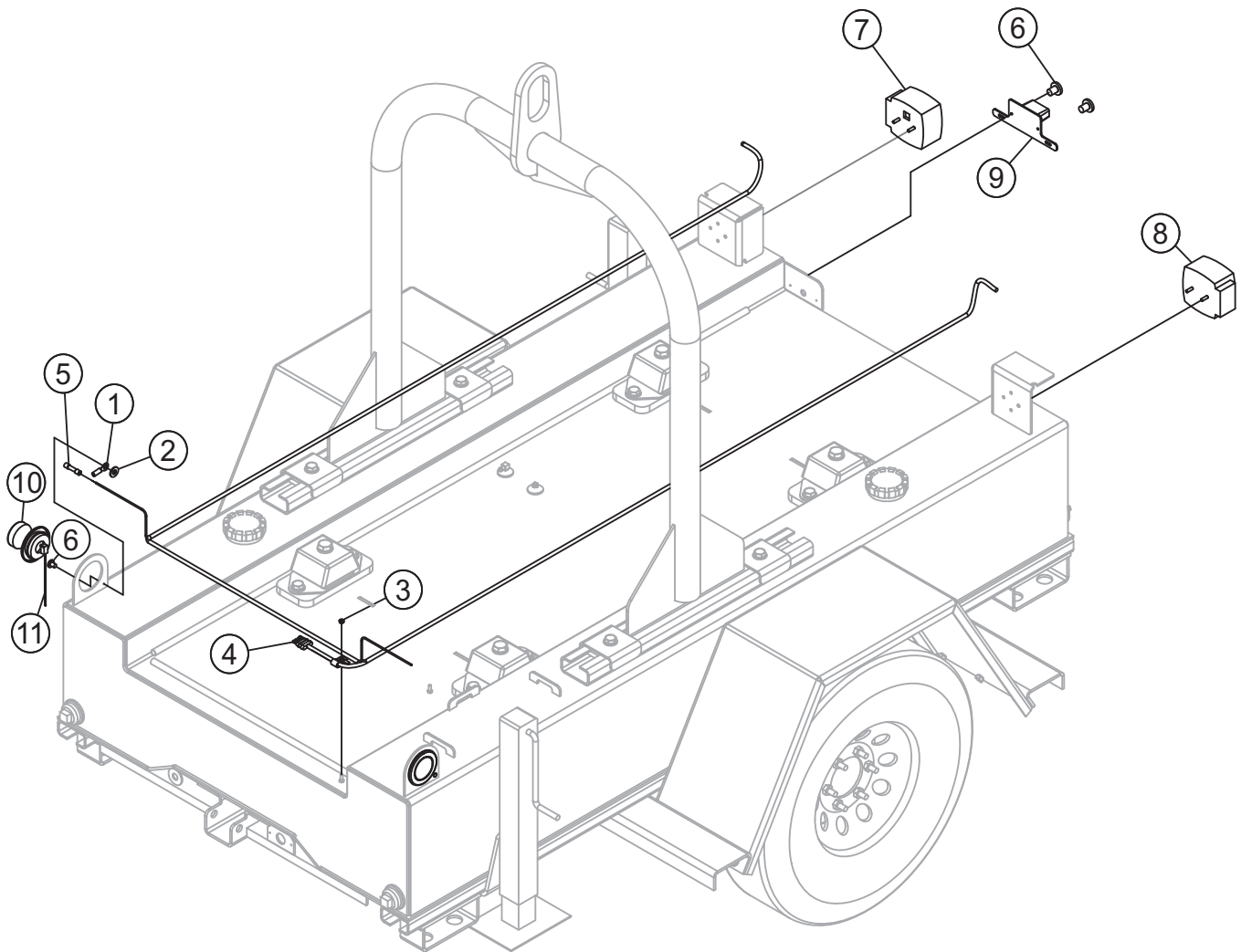
FUEL TANK ASSY.

FUEL TANK ASSY.

<u>NO.</u>	<u>PART NO.</u>	<u>PART NAME</u>	<u>QTY.</u>	<u>REMARKS</u>
1*	4684	WASHER, FLAT SAE 5/8 PLTD	20	
2	8151	WASHER, FLAT SAE 3/4	4	
3	16185	FITTING, PLUG 1/4 MP SQ HD	3	
4*	17101	SCREW, HHC M16 - 2.00 X 40 ZN	12	
5	17102	SCREW, HHC M20-2.5 X 40MM ZN, DIN 933 CL8.8	4	
6	17169	SCREW, HHC M16-2.00 X 25 DIN 933 CL 10.9	8	
7	17184	FUEL TANK, MP PUMP	1	
8	17210	FITTING, STR 1.25MP X .25FP GALV	2	
9	17216	FITTING, PLUG 1.25MP SQ HD GALV	2	
10	17245	LIFTING BAIL, MP PUMP	1	
11	17268	FITTING, FUEL PICKUP 1/4NPT X 5/16 BARB	2	
12	17272	TIE DOWN ASSY., MP PUMP	4	INCLUDES ITEMS W/*
13*	17270	TIE DOWN W/A, MP PUMP	4	
14	17274	FUEL CAP, MP PUMP	2	
15	17278	ISOLATOR, MP PUMP ENGINE SKID ASSY.	4	
16	17279	SUPPORT, MP PUMP LIFTING BAIL	4	
17*	17285	MOUNTING PLATE, TRAILER ACCESSORY	4	
18	60028	HOSE, FUEL 0.312 50PSI LOW PERM CARB	7	SOLD IN FOOT LENGTHS
			NOT SHOWN

TRAILER ASSY. (TRAILER LIGHTS)

TRAILER ASSY. (TRAILER LIGHTS)



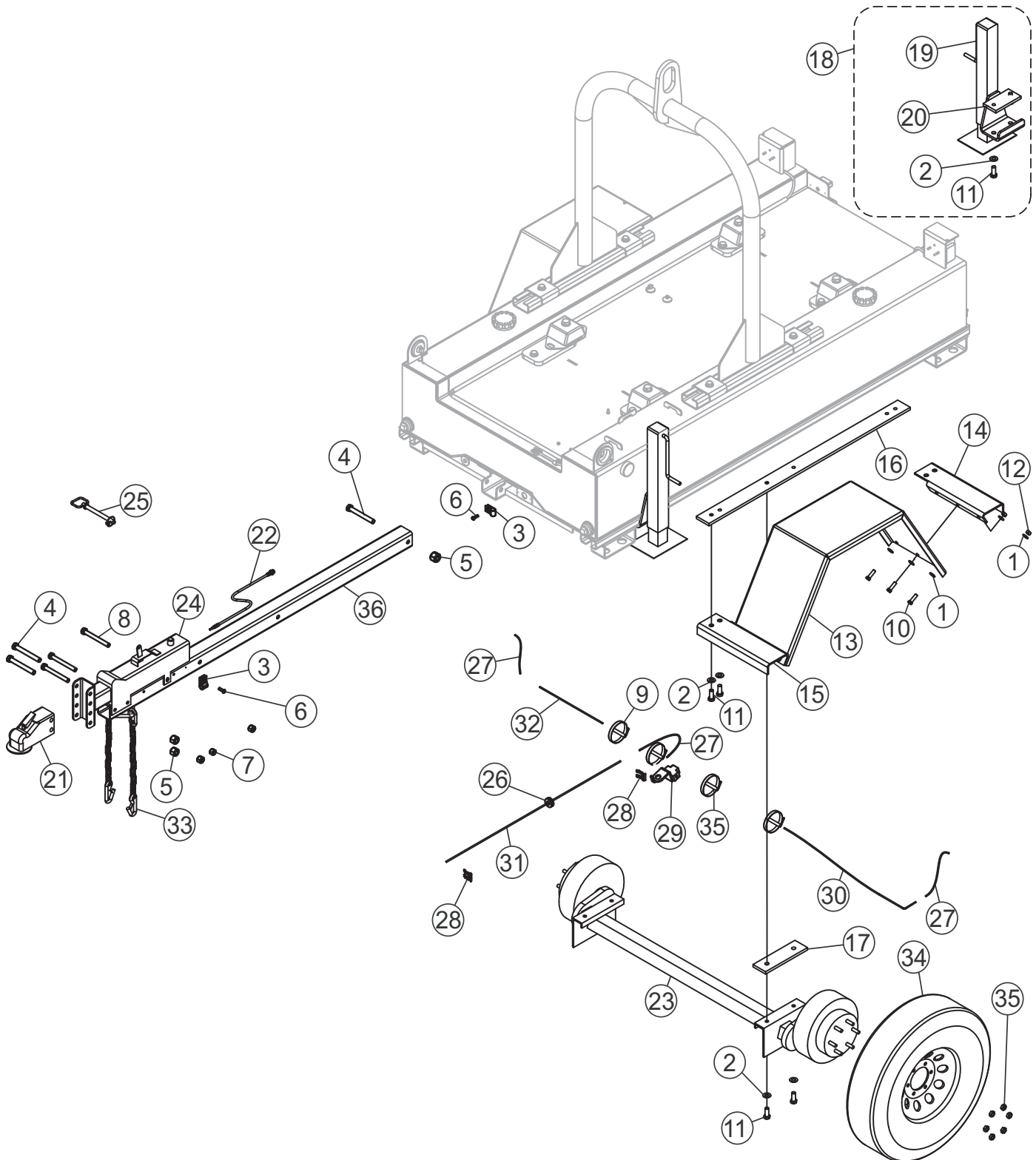
TRAILER ASSY. (TRAILER LIGHTS)

TRAILER ASSY. (TRAILER LIGHTS)

<u>NO.</u>	<u>PART NO.</u>	<u>PART NAME</u>	<u>QTY.</u>	<u>REMARKS</u>
1	1319	TERMINAL RING, 16-14 1/4" LOOP	2	
2	2203	WASHER FLAT #10	2	
3	17113	NUT, HEX FINISH M6-1.00 ZN, DIN 934 CL8	1	
4	17182	HARNESS, MP PUMP TRAILER LIGHTS	1	
5	17267	CONNECTOR, BUTT SPLICE, 14-16 HT SHRNK	2	
6	19847	RIVET, POP, ALUM 3/16X1/8-1/4	4	
7	29242	LIGHT, TAIL RT (CURB) SIDE	1	
8	29243	LIGHT, TAIL LT (ROAD) SIDE	1	
9	29552	BRACKET, LICENSE PLATE WITH LIGHT	1	
10	29898	LIGHT, 2-1/2 SIDE MARKER AMBER 143A	2	
11	29900	GROMMET, W/WIRE KIT 2-1/2" 14218K	2	

TRAILER ASSY. (SURGE BRAKE)

TRAILER ASSY. (SURGE BRAKE)



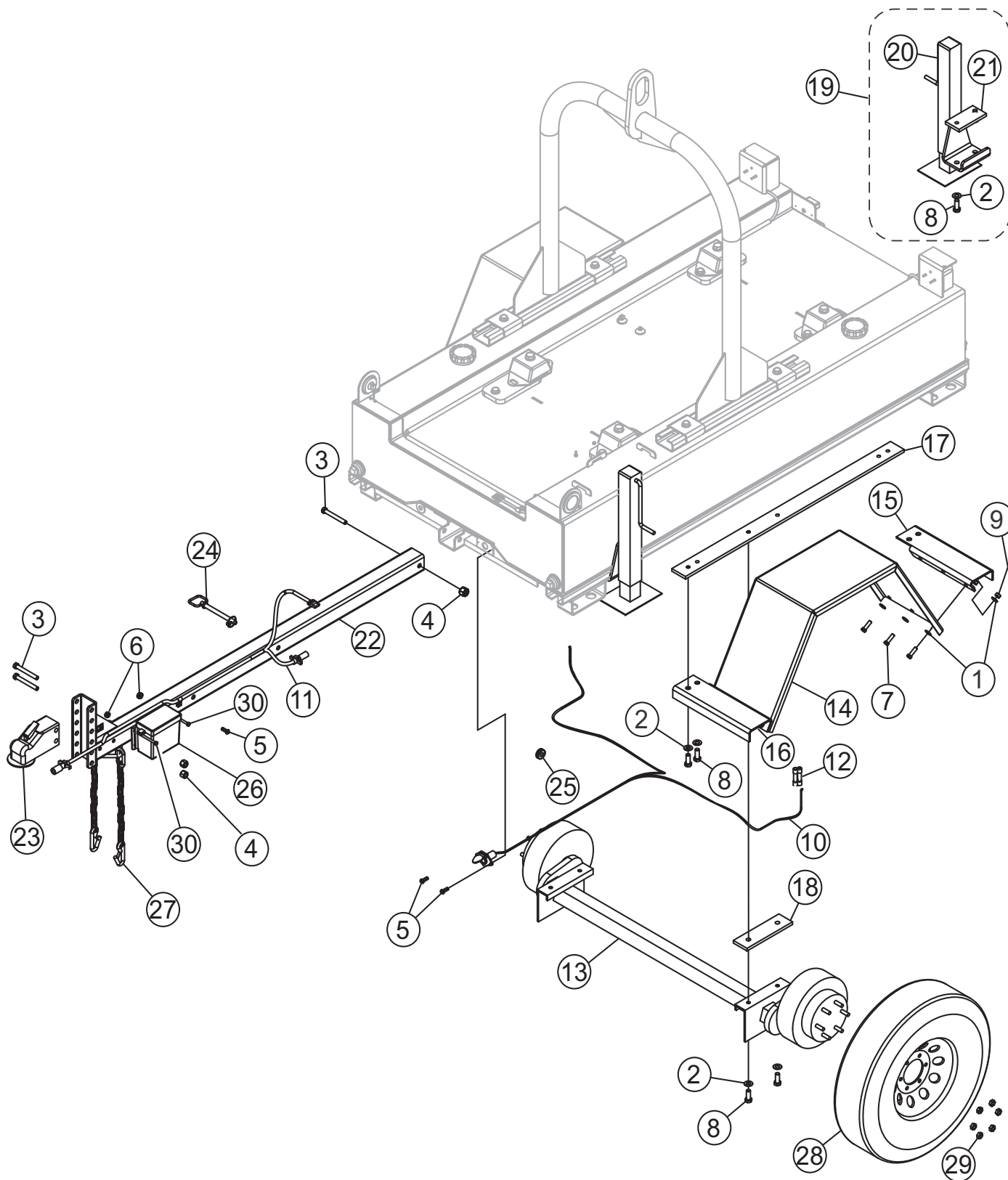
TRAILER ASSY. (SURGE BRAKE)

TRAILER ASSY. (SURGE BRAKE)

<u>NO.</u>	<u>PART NO.</u>	<u>PART NAME</u>	<u>QTY.</u>	<u>REMARKS</u>
1	0447	WASHER, FLAT 1/2 SAE	24	
2*	4684	WASHER, FLAT SAE 5/8 PLTD	25	
3	8126	CLAMP, HOSE SUPPORT 1/2" SMALL	2	
4	9502	SCREW, HHC 5/8-11 X 4-1/2 GR8	3	
5	9503	NUT, NYLOC 5/8-11	3	
6	9509	SCREW, TEK 12 X 3/4 SELF TAP	2	
7	10176	NUT, NYLOC 1/2-13	3	
8	10306	SCREW, HHC 1/2-13 X 4-1/2	3	
9	10463	CLAMP, HOSE WORM 6 1/8 - 7.0 SIZE 104	4	
10	16057	SCREW, HHC M12-1.75 X 40MM	12	
11*	17101	SCREW, HHC M16-2.00X40 ZN, DIN933 CL8.8	16	
12	17114	NUT, HEX FINISH M12-1.750 ZN, DIN934 CL8	12	
13	17275	FENDER, MP PUMP	2	
14	17276	FENDER MOUNT, MP PUMP, RH	2	
15	17277	FENDER MOUNT, MP PUMP, LH	2	
16	17280	MOUNT, MP PUMP AXLE & FENDERS	2	
17	17281	AXLE MOUNT, MP PUMP	2	
18	17282	JACK ASSY., MP PUMP	2	INCLUDES ITEMS W/*
19*	17284	JACK W/A, MP PUMP	2	
20*	17285	MOUNTING PLATE, TRAILER ACCESSORIES	2	
21	17295	COUPLER, 2 5/16" BALL 6000# GVWR	1	
22	17340	HOSE, DOT BRAKE LINE, 3/16 X 28, BRD SS	1	
23	17344	AXLE W/A, MP PUMP 5200# HYDR. BRAKE	1	
24	19067	ACTUATOR, BRAKE DEMCO 8759122-30	1	
25	19280	PIN, 5/8" X 6"	1	
26	19468	GROMMET, MINOR Z-4004	1	
27	19763	HOSE, DOT BRAKE, 3/16 X 19, MALE/FEM	3	
28	29226	TAB, SPRING LOCK	2	
29	29227	TEE, BRAKE LINE 3/16 WITH STRAP	1	
30	29231	TUBE, BRAKE 3/16 X 30 IN	1	
31	29238	TUBE, BRAKE 3/16 X 41.5 IN	1	
32	29251	TUBE, BRAKE 3/16 X 15 IN	1	
33	29572	CHAIN ASSY., SAFETY 7600 LB	2	
34	29638	WHEEL / TIRE, ST225/75D15 LR D	2	
35	29755	KIT, HARDWARE, WHL MNT, 1/2-20 PLTD NUTS	1	
36	17345	RECEIVER, MP PUMP HYD BRAKES	1	

TRAILER ASSY. (ELECTRIC BRAKE)

TRAILER ASSY. (ELECTRIC BRAKE)



TRAILER ASSY. (ELECTRIC BRAKE)

TRAILER ASSY. (ELECTRIC BRAKE)

<u>NO.</u>	<u>PART NO.</u>	<u>PART NAME</u>	<u>QTY.</u>	<u>REMARKS</u>
1	0447	WASHER, FLAT 1/2 SAE	24	
2	4684	WASHER, FLAT SAE 5/8 PLTD	25	
3	9502	SCREW, HHC 5/8-11 X 4-1/2 GR8	3	
4	9503	NUT, NYLOC 5/8-11	3	
5	9509	SCREW, TEK 12 X 3/4 SELF TAP	3	
6	16055	NUT, HEX M8-1.25	2	
7	16057	SCREW, HHC M12-1.75 X 40MM	12	
8	17101	SCREW, HHC M16-2.00X40 ZN, DIN933 CL8.8	16	
9	17114	NUT, HEX FINISH M12-1.750 ZN, DIN934 CL8	12	
10	17181	HARNESS, MP PUMP ELEC. BRAKES	1	
11	17183	HARNESS, MP PUMP TONGUE, ELEC. BRK.	1	
12	17267	CONNECTOR, BUTT SPLICE, 16-14 HT SHRNK	6	
13	17273	AXLE, MP PUMP 5200# ELEC. BRAKE	1	
14	17275	FENDER, MP PUMP	2	
15	17276	FENDER MOUNT, MP PUMP, RH	2	
16	17277	FENDER MOUNT, MP PUMP, LH	2	
17	17280	MOUNT, MP PUMP AXLE & FENDERS	2	
18	17281	AXLE MOUNT, MP PUMP	2	
19	17282	JACK ASSY., MP PUMP	2	INCLUDES ITEMS W/*
20*	17284	JACK W/A, MP PUMP	2	
21*	17285	MOUNTING PLATE, TRAILER ACCESSORIES	2	
22	17286	RECEIVER W/A , MP PUMP ELEC BRAKES	1	
23	17295	COUPLER, 2 5/16" BALL 6000# GVWR	1	
24	19280	PIN, 5/8" X 6"	1	
25	19468	GROMMET, MINOR Z-4004	2	
26	29366	KIT, BREAK-AWAY, TRAILER 70	1	
27	29572	CHAIN ASM, SAFETY 7600 LB	2	
28	29638	WHEEL / TIRE, ST225/75D15 LR D	2	
29	29755	KIT, HARDWARE, WHL MNT, 1/2-20 PLTD NUTS	1	
30	17104	SCREW, HHC M8-1.25 X 100 ZN DIN931 CL8.8	2	

TERMS AND CONDITIONS OF SALE — PARTS

PAYMENT TERMS

Terms of payment for parts are net 30 days.

FREIGHT POLICY

All parts orders will be shipped collect or prepaid with the charges added to the invoice. All shipments are F.O.B. point of origin. Multiquip's responsibility ceases when a signed manifest has been obtained from the carrier, and any claim for shortage or damage must be settled between the consignee and the carrier.

MINIMUM ORDER

The minimum charge for orders from Multiquip is \$15.00 net. Customers will be asked for instructions regarding handling of orders not meeting this requirement.

RETURNED GOODS POLICY

Return shipments will be accepted and credit will be allowed, subject to the following provisions:

1. A Returned Material Authorization must be approved by Multiquip prior to shipment.
2. To obtain a Return Material Authorization, a list must be provided to Multiquip Parts Sales that defines item numbers, quantities, and descriptions of the items to be returned.
 - a. The parts numbers and descriptions must match the current parts price list.
 - b. The list must be typed or computer generated.
 - c. The list must state the reason(s) for the return.
 - d. The list must reference the sales order(s) or invoice(s) under which the items were originally purchased.
 - e. The list must include the name and phone number of the person requesting the RMA.
3. A copy of the Return Material Authorization must accompany the return shipment.
4. Freight is at the sender's expense. All parts must be returned freight prepaid to Multiquip's designated receiving point.

5. Parts must be in new and resalable condition, in the original Multiquip package (if any), and with Multiquip part numbers clearly marked.
6. The following items are not returnable:
 - a. Obsolete parts. (If an item is in the price book and shows as being replaced by another item, it is obsolete.)
 - b. Any parts with a limited shelf life (such as gaskets, seals, "O" rings, and other rubber parts) that were purchased more than six months prior to the return date.
 - c. Any line item with an extended dealer net price of less than \$5.00.
 - d. Special order items.
 - e. Electrical components.
 - f. Paint, chemicals, and lubricants.
 - g. Decals and paper products.
 - h. Items purchased in kits.
7. The sender will be notified of any material received that is not acceptable.
8. Such material will be held for five working days from notification, pending instructions. If a reply is not received within five days, the material will be returned to the sender at his expense.
9. Credit on returned parts will be issued at dealer net price at time of the original purchase, less a 15% restocking charge.
10. In cases where an item is accepted, for which the original purchase document can not be determined, the price will be based on the list price that was effective twelve months prior to the RMA date.
11. Credit issued will be applied to future purchases only.

PRICING AND REBATES

Prices are subject to change without prior notice. Price changes are effective on a specific date and all orders received on or after that date will be billed at the revised price. Rebates for price declines and added charges for price increases will not be made for stock on hand at the time of any price change.

Multiquip reserves the right to quote and sell direct to Government agencies, and to Original Equipment Manufacturer accounts who use our products as integral parts of their own products.

SPECIAL EXPEDITING SERVICE

A \$35.00 surcharge will be added to the invoice for special handling including bus shipments, insured parcel post or in cases where Multiquip must personally deliver the parts to the carrier.

LIMITATIONS OF SELLER'S LIABILITY

Multiquip shall not be liable hereunder for damages in excess of the purchase price of the item with respect to which damages are claimed, and in no event shall Multiquip be liable for loss of profit or good will or for any other special, consequential or incidental damages.

LIMITATION OF WARRANTIES

No warranties, express or implied, are made in connection with the sale of parts or trade accessories nor as to any engine not manufactured by Multiquip. Such warranties made in connection with the sale of new, complete units are made exclusively by a statement of warranty packaged with such units, and Multiquip neither assumes nor authorizes any person to assume for it any other obligation or liability whatever in connection with the sale of its products. Apart from such written statement of warranty, there are no warranties, express, implied or statutory, which extend beyond the description of the products on the face hereof.

Effective: February 22, 2006

PARTS MANUAL

HERE'S HOW TO GET HELP

PLEASE HAVE THE MODEL AND SERIAL
NUMBER *ON-HAND* WHEN CALLING

UNITED STATES

Multiquip Corporate Office

18910 Wilmington Ave. Tel. (800) 421-1244
Carson, CA 90746 Fax (800) 537-3927
Contact: mq@multiquip.com

Mayco Parts

800-306-2926 Fax: 800-672-7877
310-537-3700 Fax: 310-637-3284

Service Department

800-421-1244 Fax: 310-537-4259
310-537-3700

MQ Parts Department

800-427-1244 Fax: 800-672-7877
310-537-3700 Fax: 310-637-3284

Warranty Department

800-421-1244, Ext. 279 Fax: 310-537-1173
310-537-3700, Ext. 279

Technical Assistance

800-478-1244 Fax: 310-631-5032

MEXICO

MQ Cipsa

Carr. Fed. Mexico-Puebla KM 126.5 Tel. (52) 222-225-9900
Momoxpan, Cholula, Puebla 72760 Mexico Fax (52) 222-285-0420
Contact: pmastretta@cipsa.com.mx

CANADA

Multiquip

4110 Industriel Boul. Tel. (450) 625-2244
Laval, Quebec, Canada H7L 6V3 Fax (450) 625-8664
Contact: jmartin@multiquip.com

UNITED KINGDOM

Multiquip (UK) Limited Head Office

Hanover Mill, Fitzroy Street, Tel. 0161 339 2223
Ashton-under-Lyne, Fax 0161 339 3226
Lancashire OL7 0TL
Contact: sales@multiquip.co.uk

BRAZIL

Multiquip

Av. Evandro Lins e Silva, 840 - grupo 505 Tel. 011-55-21-3433-9055
Barra de Tijuca - Rio de Janeiro Fax 011-55-21-3433-9055
Contact: cnavarro@multiquip.com.br, srentes@multiquip.com.br

© COPYRIGHT 2009, MULTIQUIP INC.

Multiquip Inc, the MQ logo and the Whiteman logo are registered trademarks of Multiquip Inc. and may not be used, reproduced, or altered without written permission. All other trademarks are the property of their respective owners and used with permission.

This manual MUST accompany the equipment at all times. This manual is considered a permanent part of the equipment and should remain with the unit if resold.

The information and specifications included in this publication were in effect at the time of approval for printing. Illustrations, descriptions, references and technical data contained in this manual are for guidance only and may not be considered as binding. Multiquip Inc. reserves the right to discontinue or change specifications, design or the information published in this publication at any time without notice and without incurring any obligations.

Your Local Dealer is:



MULTIQUIP INC.

18910 WILMINGTON AVE.
CARSON, CALIFORNIA 90746
800-421-1244 • 310-537-3700
FAX: 310-537-3927
E-mail: mq@multiquip.com
Internet: multiquip.com