



This bulletin is provided for technical reference and service related updates. If you have any questions, comments or do not wish to receive these e-mails, please reply to this e-mail or call the Service Technical Support Group 800 478-1244.

## IMPELLER DESIGN CHANGE

The QP2T series 2" trash pumps have received a new impeller design. The new impeller has threads machined into the center hole for easier removal when needed.

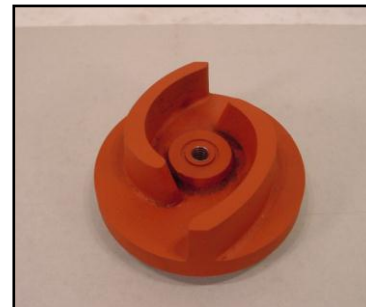
**NOTE:** *The newly designed impeller is not interchangeable with the older style impeller, mounting hardware parts are different.*

<b><u>PRODUCTION CHANGE</u></b>	
<b><i>Effected Serial Numbers</i></b>	
QP2TE	2TE-0208
QP2TH	2TH-9368
QP2TZ	2TZ-0122

**OLD STYLE IMPELLER**



**NEW STYLE IMPELLER**



### NEW DESIGN IMPELLER KITS & PARTS

DESCRIPTION	MQ PART#
1. Impeller Kit • QP2TH & QP2TE	<b>1889040031ASSY</b>
2. Impeller Kit • QP2TZ	<b>2258040031ASSY</b>
3. Impeller QP2TH & QP2TE	<b>1889040031</b>
4. Impeller QP2TZ	<b>2258040031</b>
5. Mounting Bolt	<b>0191190544</b>
6. Seal Washer	<b>0458220080</b>
7. O-Ring	<b>0482200180</b>
8. Shaft Key	<b>0520030310</b>

\*\* Kits include items 3 thru 7

For more information on R & R procedures for the new designed impeller, see TI document:

**“TI QP2T New Design Impeller R-&-R”**