



This bulletin is provided for technical reference and service related updates. If you have any questions, comments or do not wish to receive these e-mails, please reply to this e-mail or call the Service Technical Support Group 800 478-1244.

PUMP MOUNTING BOLTS

This documentation can be used as a guide on how to strengthen the mounting of the pump housing to the frame by adding a jam nut to the existing mounting hardware.

EXISTING MOUNTING HARDWARE

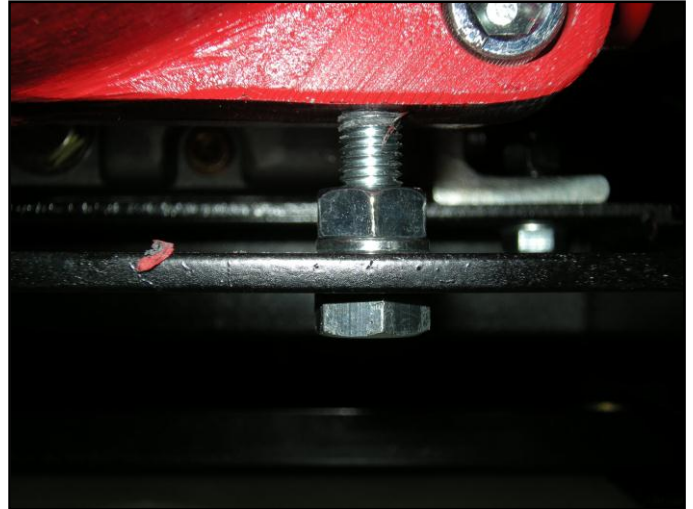
MQ PART#'s

(2) Bolt M10 X 40	0105051040
(2) Bolt Washer	0451250100
(2) Nut M10	0205450100

Added Additional Nuts

MQ PART#

(2) Nut M10	0205450100
-------------	-------------------



INSTALLATION

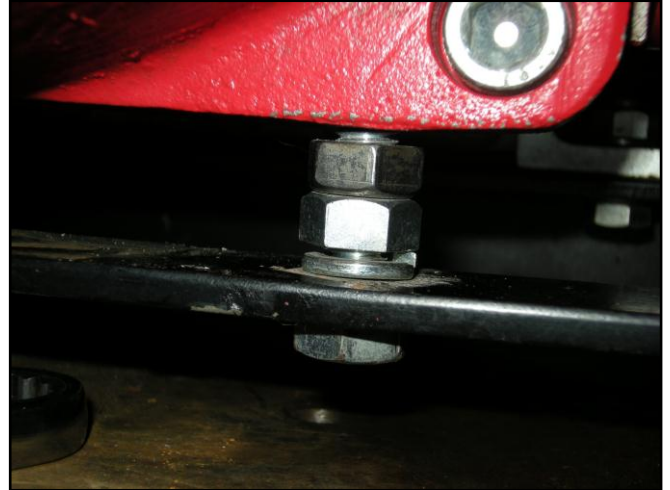
NOTE: Ensure that the pump bolt holes are precisely aligned with the cross bar bolt holes if the above hardware or engine have been removed or loosened at any time.

1. Loosen the existing nut on one side enough to allow clearance to fit the new additional jam nut.

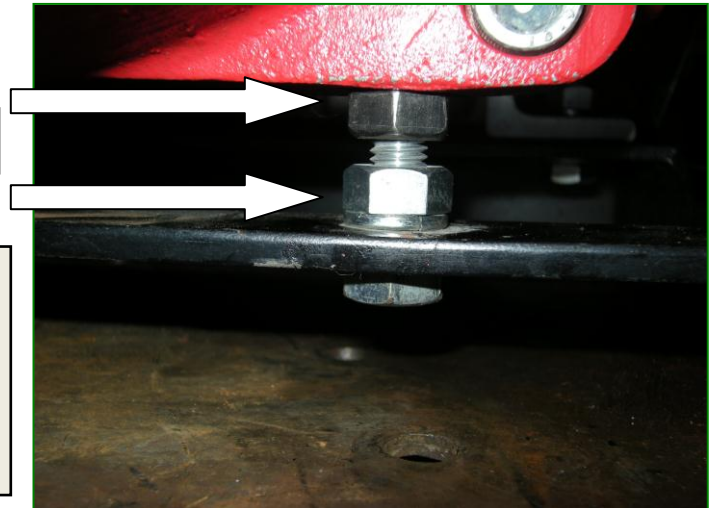


2. While holding the two nuts in place, screw the bolt up into the pump casing until the bottom of the head comes in contact with the cross support bar. (DO NOT tighten the bolt beyond this point or unwanted pretension will result).

NOTE: Apply LOCTITE # 278 (Red) to bolt before inserting into pump.



JAM NUT



3. Tighten both nuts in place.

4. Repeat process for the other side