

REPOWER FROM HONDA TO MPOWER ENGINE

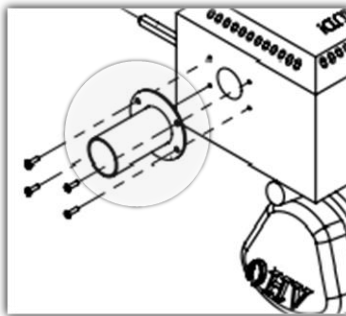
The MPower engine can be used in place of the OEM Honda Engine on EM/WM-70 & 90PH8 or WM63SH8 mixers. These models that were produced prior October 2022 were all equipped with Honda Engines.

The MPower engine can be used as a direct-fit replacement to the Honda with minimal modifications to the unit. The addition of a straight exhaust pipe is needed and a hole cut into the engine cabinet. Use the following illustrations to assist in the hole placement.

(Do not use the Honda deflector on the MPower engine)

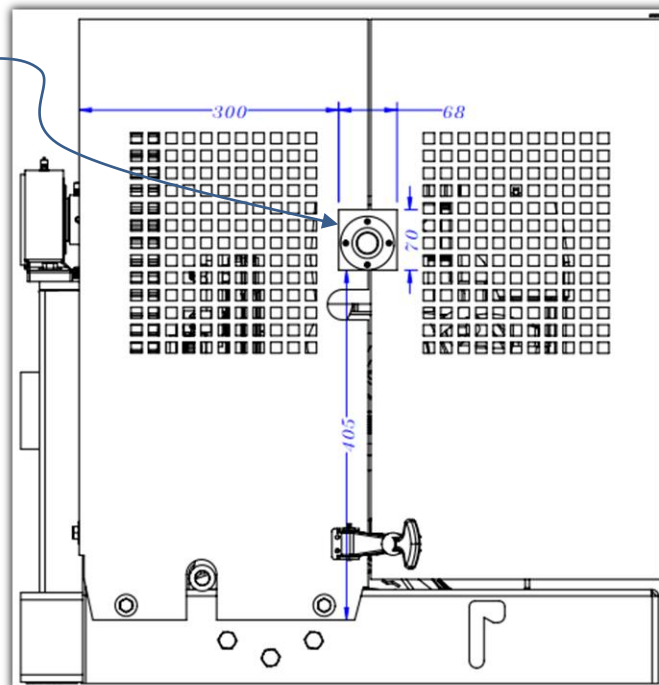
- Part #522366 – MPower Engine 9.0 HP 6:1 Reduction
- Part #522377 – Exhaust Pipe

Exhaust Pipe



EM-70 & 90 S/PH8

New exhaust hole cutout needed here



405 mm = 15.9"

300 mm = 11.8"

70 mm = 2.8"

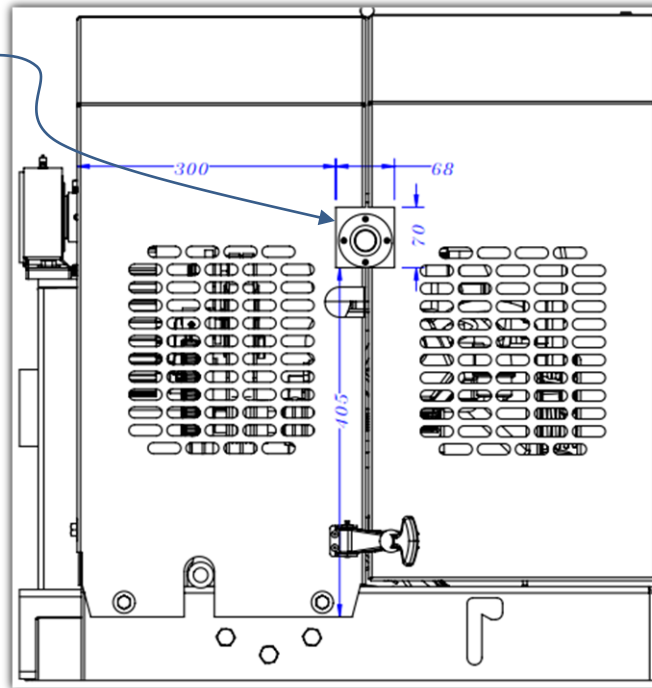
68 mm = 2.7"

The information and specifications included in this publication were in effect at the time of approval for printing. Illustrations, descriptions, references and technical data contained in this document are for guidance only and may not be considered as binding. Multiquip Inc. reserves the right to discontinue or change specifications, design or the information published in this publication at any time without notice and without incurring any obligations.

REPOWER FROM HONDA TO MPOWER ENGINE

WM-70 & 90 S/PH8

New exhaust hole cutout needed here



405 mm = 15.9"

390 mm = 15.4"

300 mm = 11.8"

290 mm = 11.4"

70 mm = 2.8"

68 mm = 2.7"

WM63SH8

New exhaust hole cutout needed here

