



ST1F

MULTIQUIP® 3/4" Submersible Pump

GALLONS PER MINUTE

18 (70 L)

HEAD

21 ft (6.4 M)

ENGINE

115V, Single Phase, 60Hz

APPLICATIONS

Construction, Standing Water, Well Casings, Excavation, Site Drainage, Manholes, Industrial, Water Supply from Lakes/Rivers, Wastewater, Quarries, Flooded Rooftops and Irrigation, Residential, Flooded Basements, Swimming Pools, Decorative Waterfalls and Fountains

STANDARD FEATURES

- **Heavy-duty 1/4 HP motor** for maximum reliability.
- 3/4" (GHT) male discharge port.
- Dewater flat surfaces up to 0.25 in. (6.35 mm) without float, 4.5 in. (114 mm) with float
- Compact aluminum housing and streamlined design.
- **Corrosion resistant aluminum casing** for superior heat dissipation.
- **Internal thermal protection** prevents motor failure do to overloading and running pump dry.
- Tethered industrial mechanical float switch assembly.
- 10 ft. molded power cord with strain relief.
- Pumps liquids up to 104° F.
- Permanently oil-lubricated triple lip seals for exceptional durability.

WARRANTY*

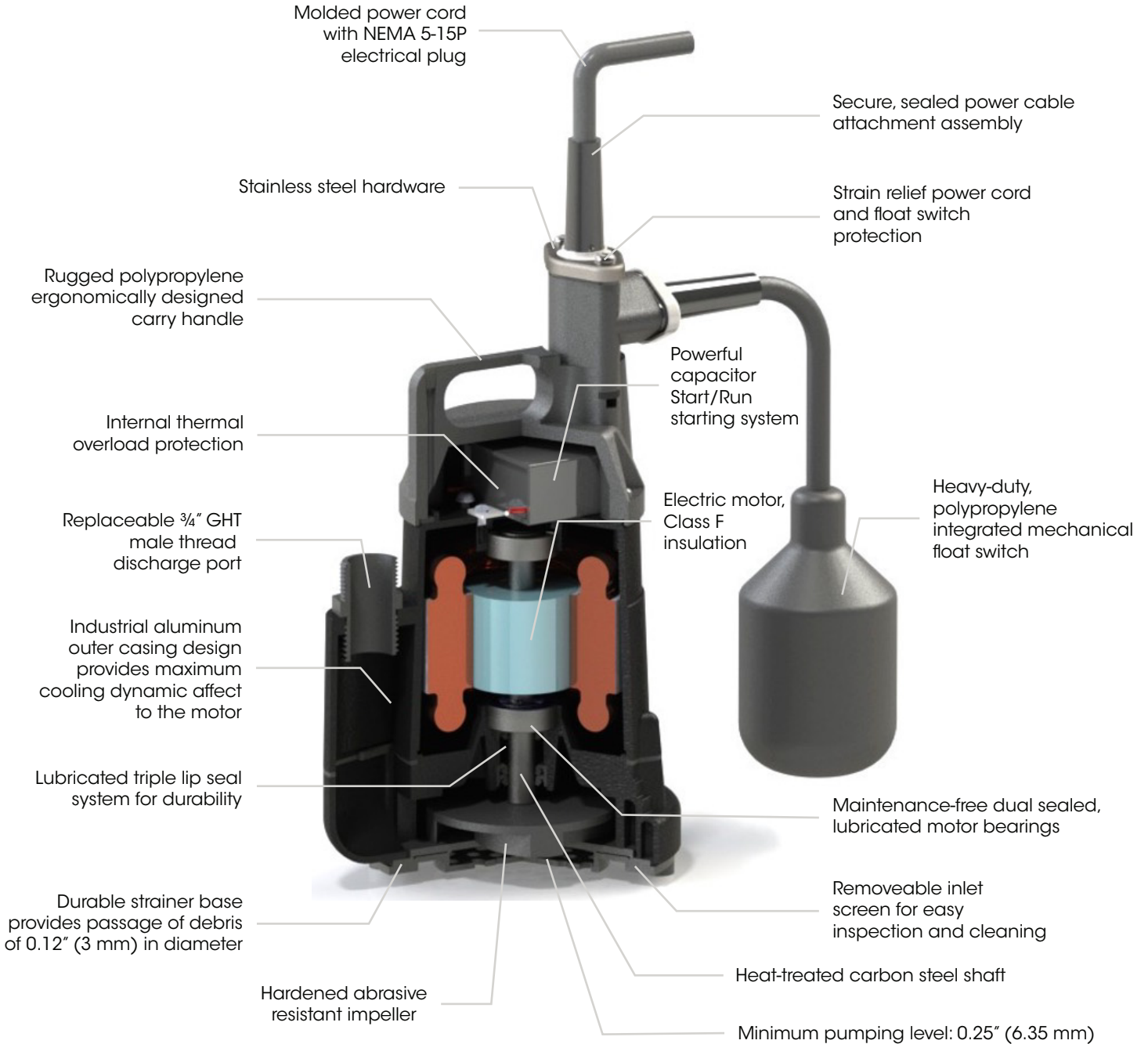
ST1F: 90 days from date of purchase.

Hoses: 3 months from date of purchase.

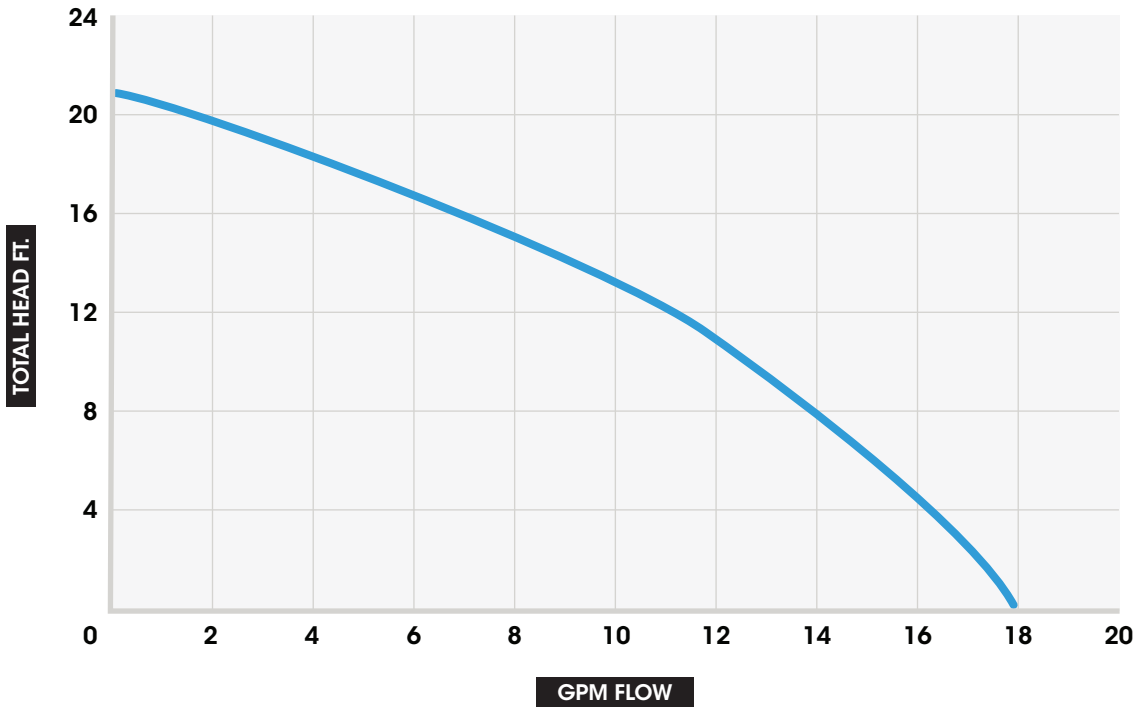
*Refer to the MULTIQUIP NEW PRODUCT LIMITED WARRANTY FOR FULL TERMS AND CONDITIONS.



FEATURES



PUMP CURVE



PUMP DIMENSIONS

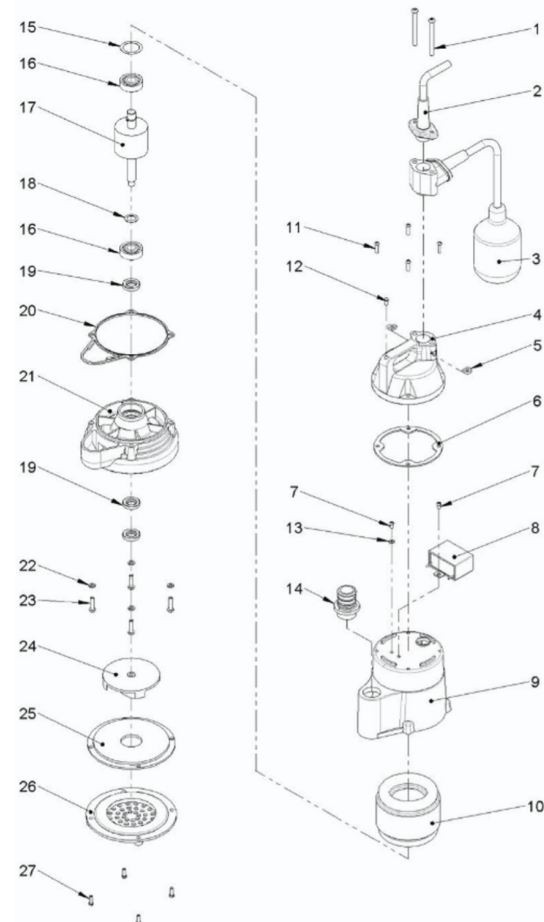


SPECIFICATIONS

| PUMP SPECIFICATIONS | |
|---|--|
| MODEL | ST1F |
| TYPE | CENTRIFUGAL SUBMERSIBLE PUMP |
| IMPELLER | POLYETHYLENE |
| SUCTION | 1.2 in. (30 mm) |
| DISCHARGE SIZE | 1.0 in. (25 mm) PUMP PORT 3/4 in. (19 mm) WITH GHT FITTING |
| MAX. PUMPING CAPACITY | 18 GALLONS/MINUTE (70 LITERS/MINUTE) |
| MAX. HEAD | 21 FT. (6.4 M) |
| PSI | 9.1 |
| MIN. PUMPING LEVEL WITHOUT FLOAT SWITCH | 0.25 in. (6.35 mm) |
| MIN. PUMPING LEVEL WITH FLOAT SWITCH | 4.5 in. (114 mm) |
| MAX. SUBMERGENCE | 16.7 in. (423.1 mm) |
| MAX. SOLID HANDLING | 0.12 in. (3 mm) |
| HORSE POWER | 0.25 (0.186 kW) |
| VOLTAGE | 115V |
| PHASE | 1Ø |
| FREQUENCY | 60 HZ |
| STARTING AMP | 6.0 |
| RUNNING AMPS | 2.8 |
| GENERATOR MIN. KW TO START/RUN | 0.690 kW/0.322 kW |
| INSULATION | CLASS F |
| MAX. FLUID TEMPERATURE | 104° F (40° C) |
| THERMAL OVERLOAD PROTECTION | STANDARD |
| ROTATION | COUNTERCLOCKWISE |
| RPM | 3,450 |
| MECHANICAL SEAL SYSTEM | PERMANENTLY OIL-LUBRICATED TRIPLE LIP SEALS FOR EXCEPTIONAL DURABILITY |
| MECHANICAL SEAL OIL CAPACITY | - |
| MECHANICAL SEAL OIL TYPE | OIL-FREE |
| MECHANICAL SHAFT | HEAT-TREATED CARBON STEEL |
| O-RINGS | NITRILE RUBBER |
| HARDWARE | STAINLESS STEEL |
| SALT OR CHEMICALS | NO |
| POWER CABLE PLUG | NEMA 5-15P |
| POWER CABLE PROTECTION | STRAIN RELIEF |
| POWER CABLE LENGTH | 10.0 FT. (3.05 M) |
| FLOAT SWITCH CABLE LENGTH | 12.0 in. (305 mm) |
| DRY WEIGHT | 9.2 lb. (4.17 kg) |

PARTS BREAKDOWN

| NO. | PART NUMBER | DESCRIPTION | QTY. |
|-----|-------------|---------------------------------------|------|
| 1 | 2730543101 | SCREW, ROUND CROSS, M5 X 58 | 2 |
| 2 | 4810101110 | POWER CABLE W/ PLUG, 18AWG, 10.83 FT. | 1 |
| 3 | 3070020007 | FLOAT SWITCH, MECHANICAL | 1 |
| 4 | 3004010005 | UPPER COVER | 1 |
| 5 | 3065053001 | SHIM, UPPER COVER | 2 |
| 6 | 3045031008 | GASKET | 1 |
| 7 | 2730230102 | SCREW, ROUND CROSS, M4 X 6 | 2 |
| 8 | 1720200001 | CAPACITOR, 250V X 12UF | 1 |
| 9 | 3017500002 | MOTOR FRAME | 1 |
| 10 | 3031101201 | STATOR, 1Ø, 2P, 90 X 47 X 40L | 1 |
| 11 | 2730243101 | SCREW, ROUND CROSS, M4 X 15 | 4 |
| 12 | 3045111003 | AIR HOLES GASKET | 1 |
| 13 | 2750730002 | WASHER, AW-04, 4MM | 1 |
| 14 | 3001010301 | DISCHARGE PORT, 3/4" GHT X 3/4" NPT | 1 |
| 15 | 2750130003 | WAVE WASHER, BWW-6201 | 1 |
| 16 | 1790100005 | BEARING, ZZ 6201 | 2 |
| 17 | 3032301005 | SHAFT/ROTOR WITHOUT BEARING | 1 |
| 18 | 2750830002 | BEARING WASHER, 12.5 X 19 X 0.5T | 1 |
| 19 | 1424302001 | OIL SEAL, 12MM-24 X 4.5 | 3 |
| 20 | 3045041006 | PUMP CASING GASKET | 1 |
| 21 | 3011500004 | SEAL BRACKET | 1 |
| 22 | 2750343004 | SPRING WASHER, M5, 3/16" | 4 |
| 23 | 2730243203 | SCREW, ROUND CROSS, M5 X 20 | 4 |
| 24 | 3015010502 | IMPELLER, 3" DIA. | 1 |
| 25 | 3012010006 | INLET PLATE | 1 |
| 26 | 3013010008 | STRAINER | 1 |
| 27 | 2730243103 | SCREW, ROUND CROSS, M4 X 12 | 4 |



NOTICE Features and Specifications are subject to change without notice.