



ST1

MULTIQUIP® 3/4" Submersible Pump

GALLONS PER MINUTE

18 (70 L)

HEAD

21 ft (6.4 M)

ENGINE

115V, Single Phase, 60Hz

APPLICATIONS

Construction, Standing Water, Well Casings, Excavation, Site Drainage, Manholes, Industrial, Water Supply from Lakes/Rivers, Wastewater, Quarries, Flooded Rooftops and Irrigation, Residential, Flooded Basements, Swimming Pools, Decorative

STANDARD FEATURES

- **Heavy-duty 1/4 HP motor** for maximum reliability.
- 3/4" (GHT) male discharge port.
- Dewateres flat surfaces up to 0.25 in. (6.35 mm).
- Compact aluminum housing and streamlined design.
- **Corrosion resistant aluminum casing** for superior heat dissipation.
- **Internal thermal protection** prevents motor failure due to overloading and running pump dry.
- 10 ft. molded power cord with strain relief.
- Pumps liquids up to 104° F.
- Permanently oil-lubricated triple lip seals for exceptional durability.



WARRANTY*

ST1: 90 days from date of purchase.

Hoses: 3 months from date of purchase.

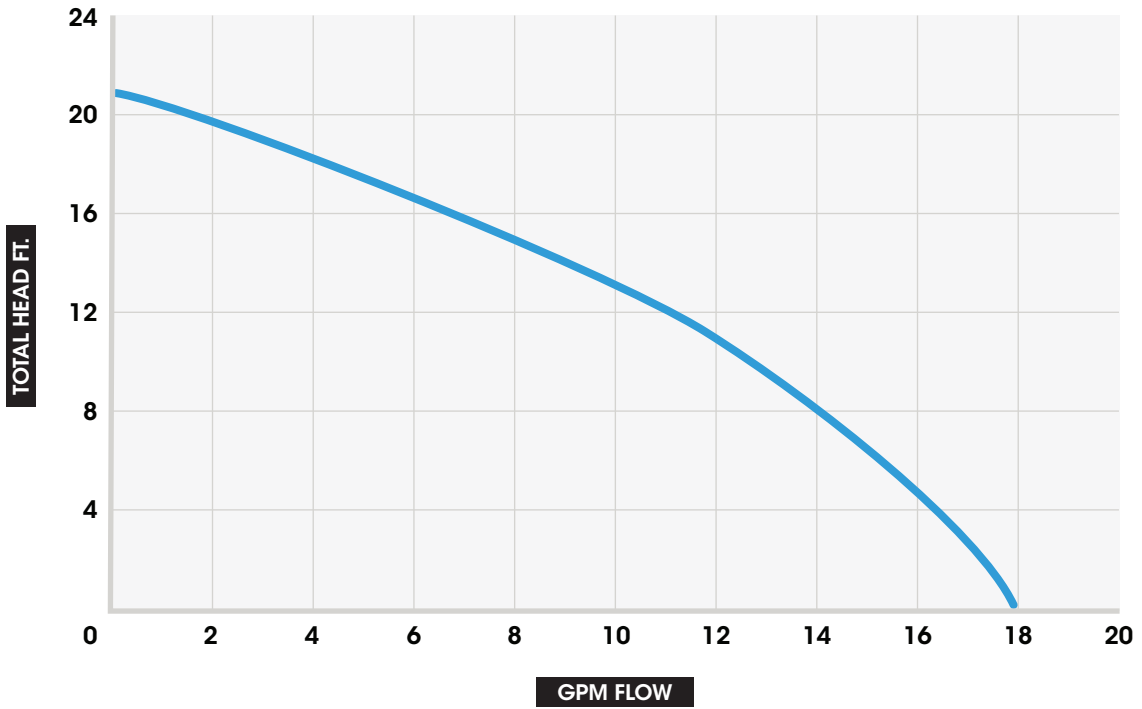
*Refer to the MULTIQUIP NEW PRODUCT LIMITED WARRANTY FOR FULL TERMS AND CONDITIONS.

FEATURES

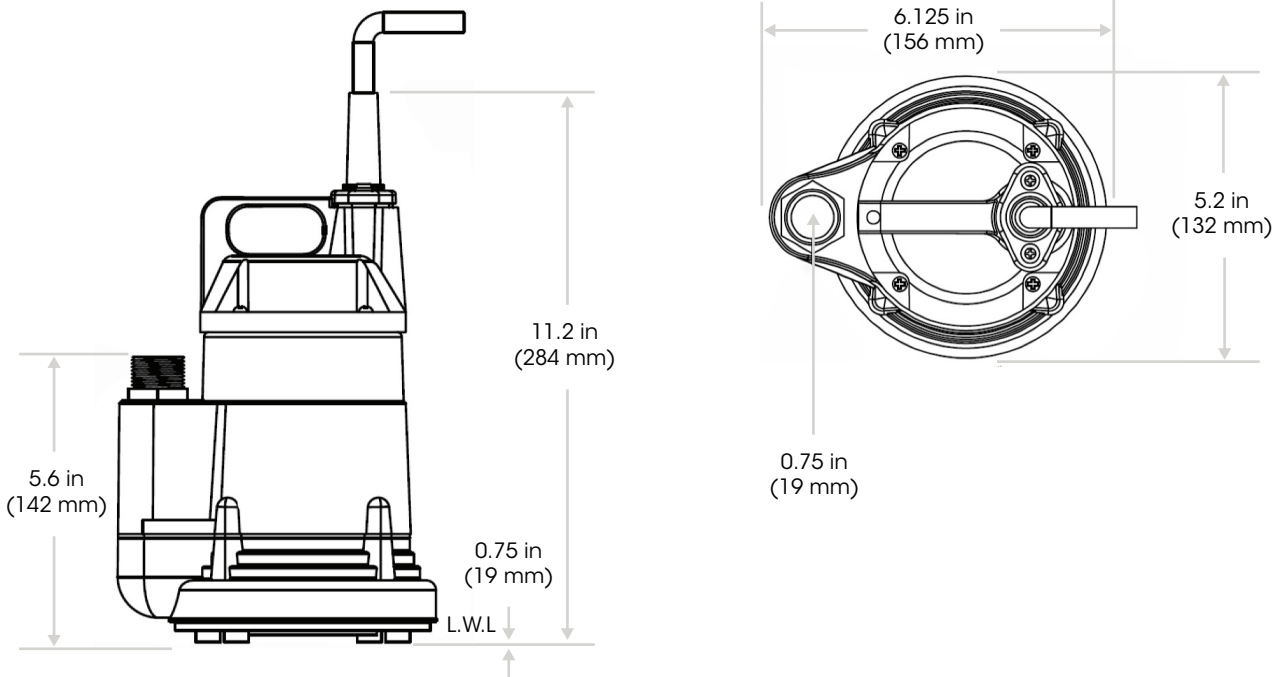


© COPYRIGHT 2026 MULTIQUIP INC. (REV 04022026)

PUMP CURVE



PUMP DIMENSIONS

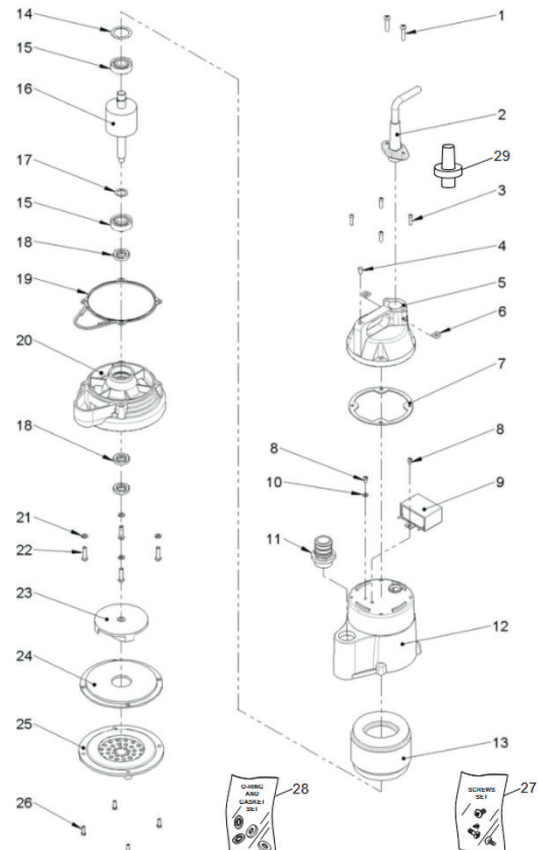


SPECIFICATIONS

PUMP SPECIFICATIONS	
MODEL	ST1
TYPE	CENTRIFUGAL SUBMERSIBLE PUMP
IMPELLER	POLYETHYLENE
SUCTION	1.2 in. (30 mm)
DISCHARGE SIZE	1.0 in. (25 mm) PUMP PORT 3/4 in. (19 mm) WITH GHT FITTING
MAX. PUMPING CAPACITY	18 GALLONS/MINUTE (70 LITERS/MINUTE)
MAX. HEAD	21 FT. (6.4 M)
PSI	9.1
MIN. PUMPING LEVEL	0.25 in. (6.35 mm)
MAX. SUBMERGENCE	16.7 in. (423.1 mm)
MAX. SOLID HANDLING	0.12 in. (3 mm)
HORSE POWER	0.25 (0.186 kW)
VOLTAGE	115V
PHASE	1Ø
FREQUENCY	60 HZ
STARTING AMP	6.0
RUNNING AMPS	2.8
GENERATOR MIN. KW TO START/RUN	0.690 kW/0.322 kW
INSULATION	CLASS F
MAX. FLUID TEMPERATURE	104° F (40° C)
THERMAL OVERLOAD PROTECTION	STANDARD
ROTATION	COUNTERCLOCKWISE
RPM	3,450 (±30)
MECHANICAL SEAL SYSTEM	PERMANENTLY OIL-LUBRICATED TRIPLE LIP SEALS FOR EXCEPTIONAL DURABILITY
MECHANICAL SEAL OIL CAPACITY	-
MECHANICAL SEAL OIL TYPE	OIL-FREE
MECHANICAL SHAFT	HEAT-TREATED CARBON STEEL
O-RINGS	NITRILE RUBBER
HARDWARE	STAINLESS STEEL
SALT OR CHEMICALS	NO
POWER CABLE PLUG	NEMA 5-15P
POWER CABLE PROTECTION	STRAIN RELIEF
POWER CABLE LENGTH	10.0 FT. (3.05 M)
DRY WEIGHT	9.2 lb. (4.17 kg)

PARTS BREAKDOWN

NO.	PART NUMBER	DESCRIPTION	QTY.
1	2730443201	SCREW, ROUND CROSS, M5 X 22	2
2	4810101110	POWER CABLE W/ PLUG, 18AWG, 10.83 FT.	1
3	2730243101	SCREW, ROUND CROSS, M4 X 15	4
4	3045111003	AIR HOLES GASKET	1
5	3004010005	UPPER COVER	1
6	3065053001	SHIM, UPPER COVER	2
7	3045031008	GASKET	1
8	2730230102	SCREW, ROUND CROSS, M4 X 6	2
9	1720200001	CAPACITOR, 250V X 12UF	1
10	2750730002	WASHER, AW-04, 4MM	1
11	3001010301	DISCHARGE PORT, 3/4" GHT X 3/4" NPT	1
12	3017500002	MOTOR FRAME	1
13	3031101201	STATOR, 1Ø, 2P, 90 X 47 X 40L	1
14	2750130003	WAVE WASHER, BWW-6201	1
15	1790100005	BEARING, ZZ 6201	2
16	3032301005	SHAFT/ROTOR WITHOUT BEARING	1
17	2750830002	BEARING WASHER, 12.5 X 19 X 0.5T	1
18	1424302001	OIL SEAL, 12MM-24 X 4.5	3
19	3045041006	PUMP CASING GASKET	1
20	3011500004	SEAL BRACKET	1
21	2750343004	WASHER, LOCK, M5, 3/16"	4
22	2730243203	SCREW, ROUND CROSS, M5 X 20	4
23	3015010502	IMPELLER, 3" DIA.	1
24	3012010006	INLET PLATE	1
25	3013010008	STRAINER	1
26	2730243103	SCREW, ROUND CROSS, M4 X 12	4
27	4730100002	SCREWS SET	1
28	4410100002	O-RING AND GASKET SET	1
29	3066102003	CABLE GLAND	1



© COPYRIGHT 2026 MULTIQUIP INC. (REV 04022026)

NOTICE Features and Specifications are subject to change without notice.