

# PARTS MANUAL



## **MODEL ST41230/ST41460 MODEL ST61230/ST61460 SUBMERSIBLE PUMPS**

Revision #5 (08/15/24)

To find the latest revision of this publication or associated operation manual, visit our website at: [www.multiquip.com](http://www.multiquip.com)



**THIS MANUAL MUST ACCOMPANY THE EQUIPMENT AT ALL TIMES.**

# TABLE OF CONTENTS

---

## **ST41230/ST41460**

## **ST61230/ST61460**

### **Submersible Pumps**

Explanation Of Codes In Remarks Column ..... 4  
Suggested Spare Parts ..... 5

### **Component Drawings**

ST41230/ST41460 Assembly ..... 6-7  
ST61230/ST61460 Assembly ..... 8-9

<b>NOTICE</b>
Specifications and part numbers are subject to change without notice.

---


# EXPLANATION OF CODES IN REMARKS COLUMN

The following section explains the different symbols and remarks used in the Parts section of this manual. Use the help numbers found on the back page of the manual if there are any questions.

## NOTICE

The contents and part numbers listed in the parts section are subject to change without notice. Multiquip does not guarantee the availability of the parts listed.

## SAMPLE PARTS LIST

NO.	PART NO.	PART NAME	QTY.	REMARKS
1	12345	BOLT .....	1	INCLUDES ITEMS W/%
2%		WASHER, 1/4 IN. ....		NOT SOLD SEPARATELY
2%	12347	WASHER, 3/8 IN. ...	1	MQ-45T ONLY
3	12348	HOSE .....	A/R	MAKE LOCALLY
4	12349	BEARING .....	1	S/N 2345B AND ABOVE

## NO. Column

**Unique Symbols** — All items with same unique symbol (@, #, +, %, or >) in the number column belong to the same assembly or kit, which is indicated by a note in the “Remarks” column.

**Duplicate Item Numbers** — Duplicate numbers indicate multiple part numbers, which are in effect for the same general item, such as different size saw blade guards in use or a part that has been updated on newer versions of the same machine.

## NOTICE

When ordering a part that has more than one item number listed, check the remarks column for help in determining the proper part to order.

## PART NO. Column

**Numbers Used** — Part numbers can be indicated by a number, a blank entry, or TBD.

TBD (To Be Determined) is generally used to show a part that has not been assigned a formal part number at the time of publication.

A blank entry generally indicates that the item is not sold separately or is not sold by Multiquip. Other entries will be clarified in the “Remarks” Column.

## QTY. Column

**Numbers Used** — Item quantity can be indicated by a number, a blank entry, or A/R.

A/R (As Required) is generally used for hoses or other parts that are sold in bulk and cut to length.

A blank entry generally indicates that the item is not sold separately. Other entries will be clarified in the “Remarks” Column.

## REMARKS Column

Some of the most common notes found in the “Remarks” Column are listed below. Other additional notes needed to describe the item can also be shown.

**Assembly/Kit** — All items on the parts list with the same unique symbol will be included when this item is purchased.

Indicated by:

“INCLUDES ITEMS W/(unique symbol)”

**Serial Number Break** — Used to list an effective serial number range where a particular part is used.

Indicated by:

“S/N XXXXX AND BELOW”

“S/N XXXX AND ABOVE”

“S/N XXXX TO S/N XXX”

**Specific Model Number Use** — Indicates that the part is used only with the specific model number or model number variant listed. It can also be used to show a part is NOT used on a specific model or model number variant.

Indicated by:

“XXXXX ONLY”

“NOT USED ON XXXX”

**“Make/Obtain Locally”** — Indicates that the part can be purchased at any hardware shop or made out of available items. Examples include battery cables, shims, and certain washers and nuts.

**“Not Sold Separately”** — Indicates that an item cannot be purchased as a separate item and is either part of an assembly/kit that can be purchased, or is not available for sale through Multiquip.

## SUGGESTED SPARE PARTS

---

### ST41230/ST41460 AND ST61230/ST61460 SUBMERSIBLE PUMPS

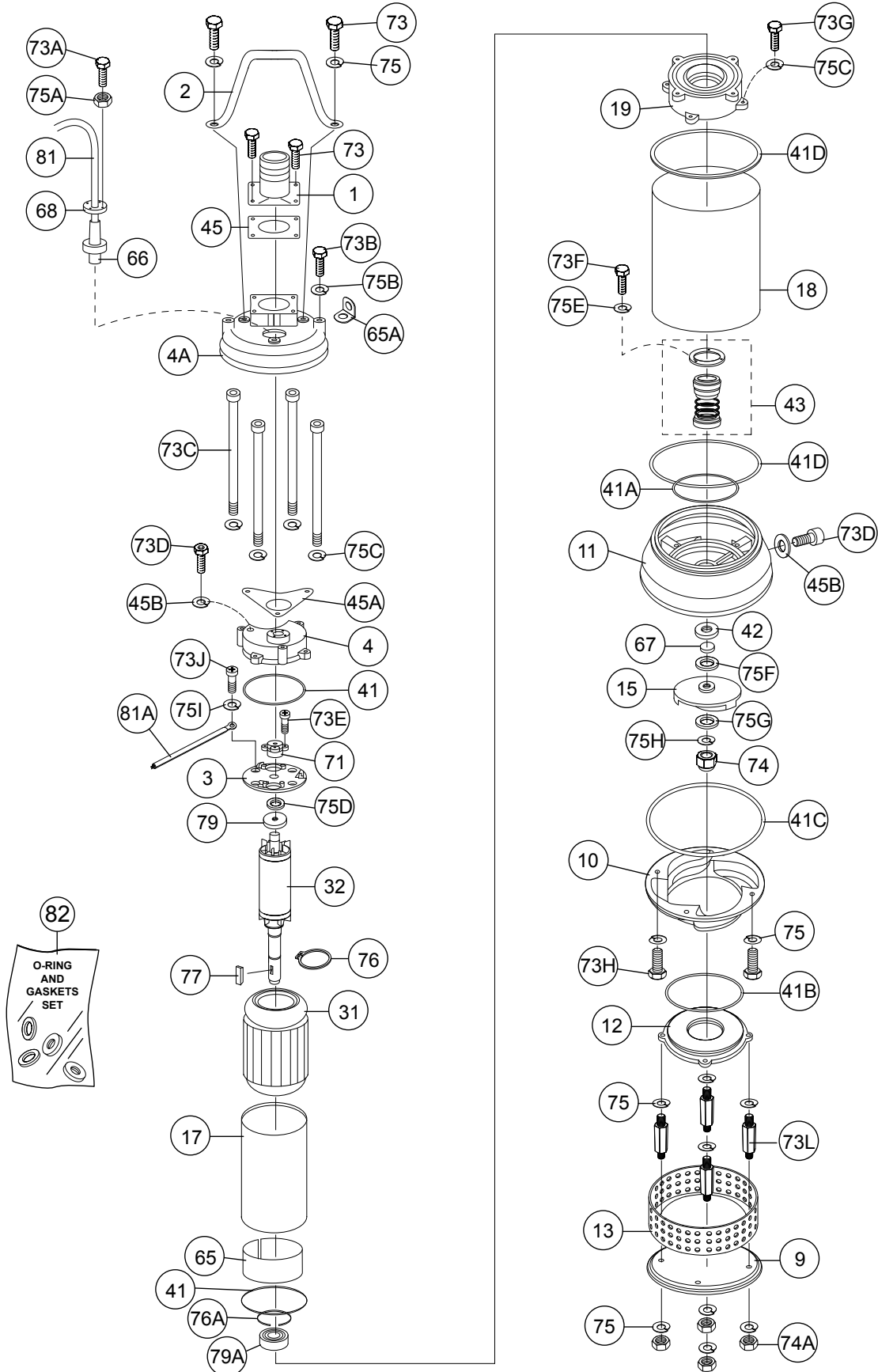
1 to 3 units

Qty.	P/N	Description
1.....	432230-01 .....	MECHANICAL SEAL
1.....	4214335-01 .....	OIL SEAL
1.....	.86414475N.....	O-RING GASKET SET (ST41230/ST41460)
1.....	.86414110.....	O-RING GASKET SET (ST61230/ST61460)

#### **NOTICE**

Part numbers on this Suggested Spare Parts list may supersede/replace the part numbers shown in the following parts lists.

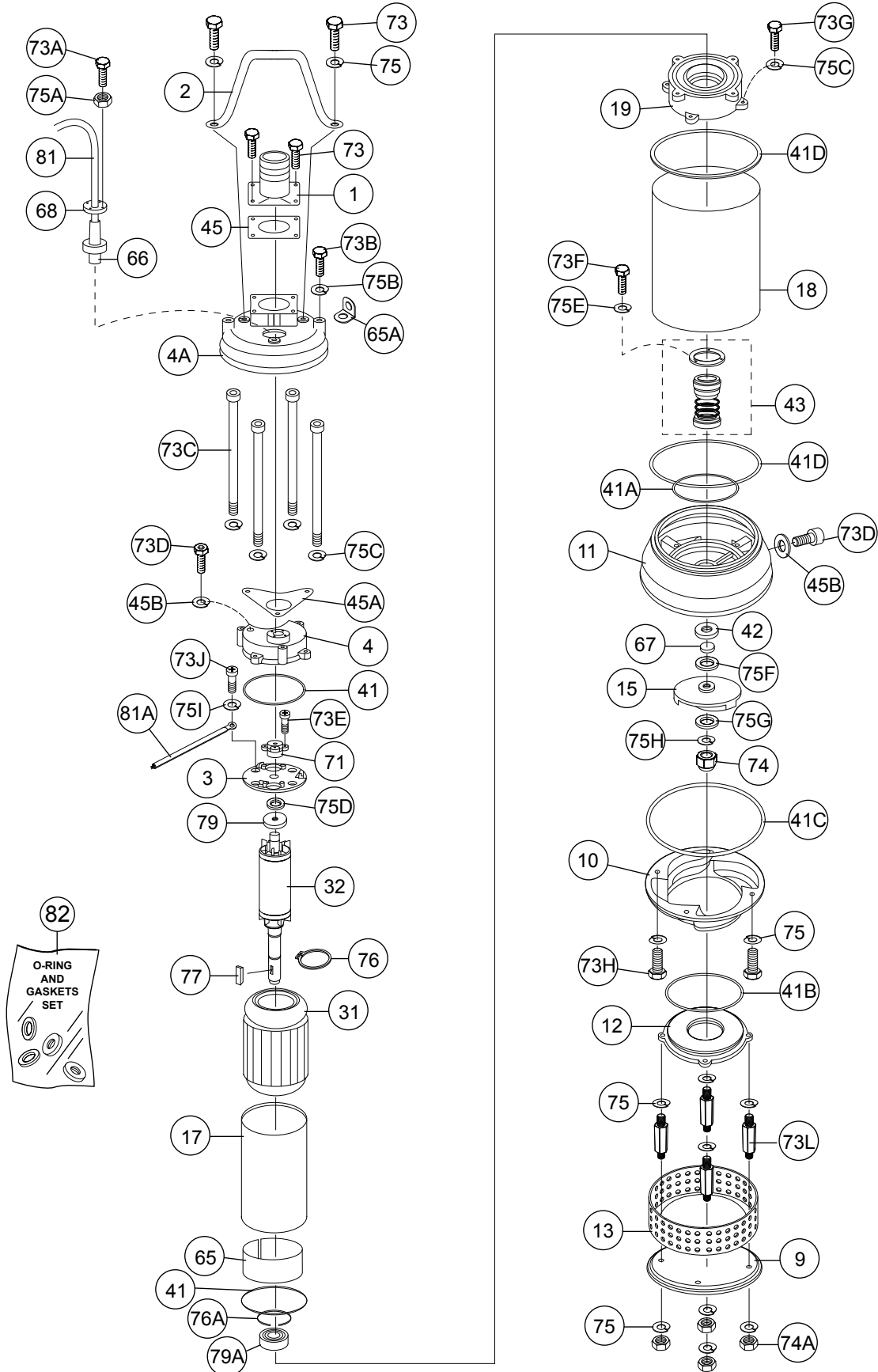
# ST41230/ST41460 ASSY.



**ST41230/ST41460 ASSY.**

<u>NO.</u>	<u>PART NO.</u>	<u>PART NAME</u>	<u>QTY.</u>	<u>REMARKS</u>
1	01360844	DISCHARGE HEAD, NPT 4"	1	
2	02303-1	HANDLE	1	
3	0336FS-0550	SWITCH PLATE	1	
4	0436FS0750N	MOTOR COVER	1	
4A	0436FS0750NF	UPPER COVER	1	
9	0935FS0750N	BASE PLATE	1	
10	1036FS0750N	PUMP CASING	1	
11	1136FS0750N	SEAL BRACKET	1	
12	1236FS0750N	INLET PLATE, 4"	1	
13	13431512012	STRAINER, 15MM	1	
15	1541FS4750174	IMPELLER	1	
17	1743160320	MOTOR FRAME	1	
18	1843FS0750N	OUTER CASE	1	
19	1936FS0750N	BEARING BRACKET	1	
31	313220518F6	STATOR .....	1.....	ST41230
31	313440518F6	STATOR.....	1.....	ST41460
32	323FS0750N	SHAFT/ROTOR W/O BEARING	1	
41\$	411026-10	O-RING	2	
41A\$	411031-08	O-RING	1	
41B\$	411031-02	O-RING	1	
41C\$	411031-00	O-RING	1	
41D\$	411040-01	O-RING	2	
42	4214335-01	OIL SEAL	1	
43	432230-01	MECHANICAL SEAL	1	
45\$	455FS-055010	GASKET	1	
45A\$	451FS0750N10	GASKET	1	
45B\$	459010	GASKET	2	
65	6531150	SHIM, 50MM	1	
65A	65433	SHIM	1	
66	66715145	CABLE GLAND	1	
67	674335-01	SHAFT SLEEVE	1	
68	684321	GLAND HOLDER	1	
71	7128-06	THERMAL PROTECTOR .....	1.....	ST41230
71	7128-07	THERMAL PROTECTOR .....	1.....	ST41460
73	73431100301	SCREW, HEX. M10	6	
73A	73432060161	SCREW, SOCKET HEX. M6	4	
73B	73431120401	SCREW, HEX. M12	3	
73C	73436084001	SCREW, HEX. M8	4	
73D	73432100161	SCREW, SOCKET HEX. M10	2	
73E	73433040121	SCREW, ROUND CROSS M4	2	
73F	73431050121	SCREW, FLAT HEX. M5	3	
73G	73431080301	SCREW, FLAT HEX. M8	4	
73H	73431100351	SCREW, FLAT HEX. M10	4	
73L	73437101022	SCREW, STAND-OFF M10	4	
73J	73303040081	SCREW, ROUND CROSS M4	1	
74	7434316	NUT, M16	1	
74A	7414310	NUT, M10	4	

# ST41230/ST41460 ASSY.

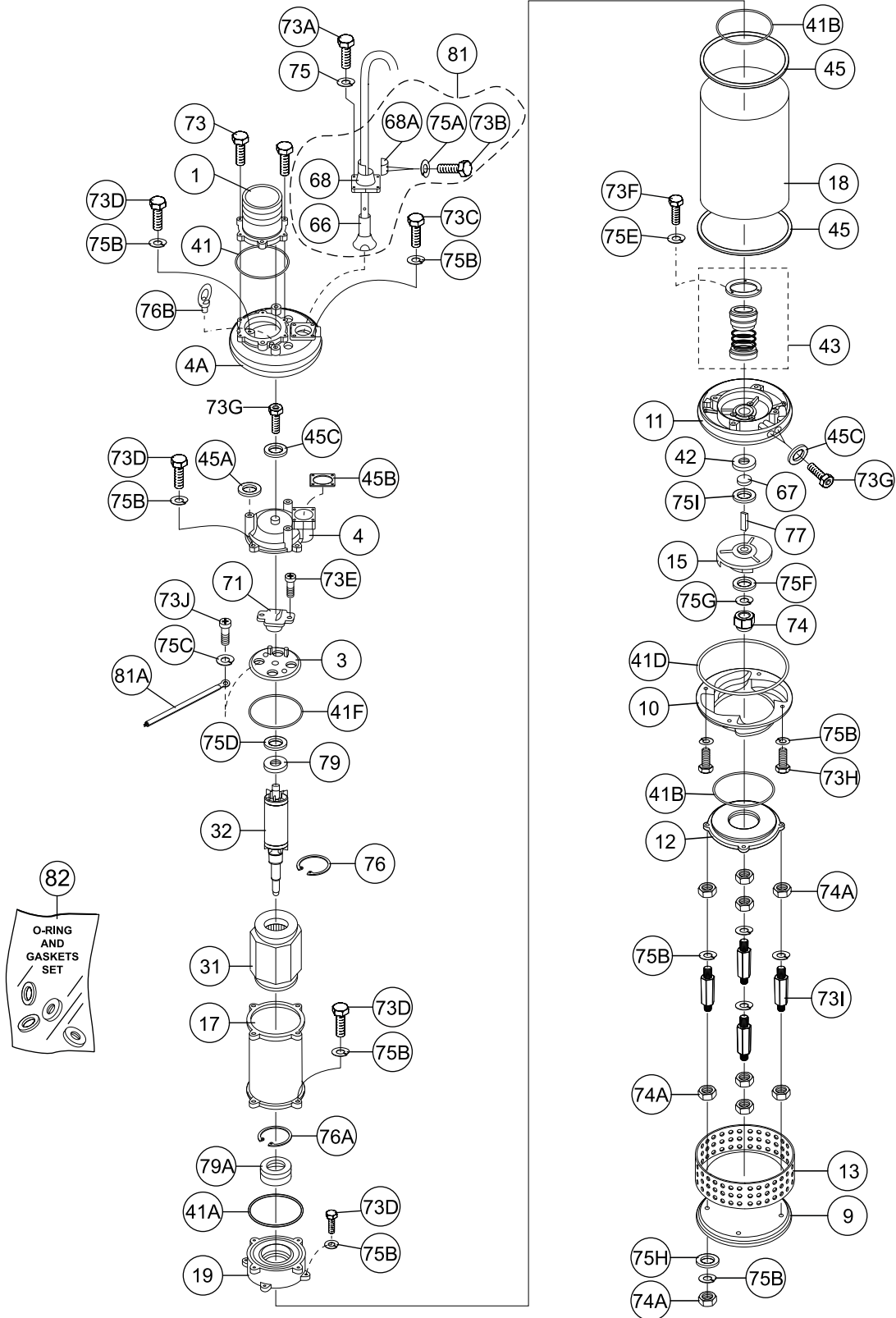




## ST41230/ST41460 ASSY.

<u>NO.</u>	<u>PART NO.</u>	<u>PART NAME</u>	<u>QTY.</u>	<u>REMARKS</u>
75	753430010-01	WASHER, LOCK M10	14	
75A	753430006-01	WASHER, LOCK, M6	4	
75B	753430012-01	WASHER, LOCK, M12	2	
75C	753430008-01	WASHER, LOCK, M8	8	
75D	751306304	WAVE WASHER, 6304	1	
75E	753430005-01	WASHER, LOCK, M5	3	
75F	752430025-01	WASHER, M25	1	
75G	752430016-03	WASHER, M16	1	
75H	753430016-01	WASHER, LOCK, M16	1	
75I	757300004	WASHER, LOCK, M4	1	
76	7630STW40	SNAP RING .....	1	ST41230
76A	7630RTW90	SNAP RING .....	1	ST41460
76A	7630RTW40	SNAP RING	1	
77	771433-01	KEY, 7X7X18	1	
79	79363041	BEARING, 6304	1	
79A	79363081	BEARING, 6308	2	
81	8102554150131	CABLE, 50 FT.	1	
81A	81G1001	EARTH LEAD .....	1	ST41230
81A	811202	EARTH LEAD .....	1	ST41460
82	86414475N	O-RING AND GASKET SET .....	1	INCLUDES ITEMS W/\$

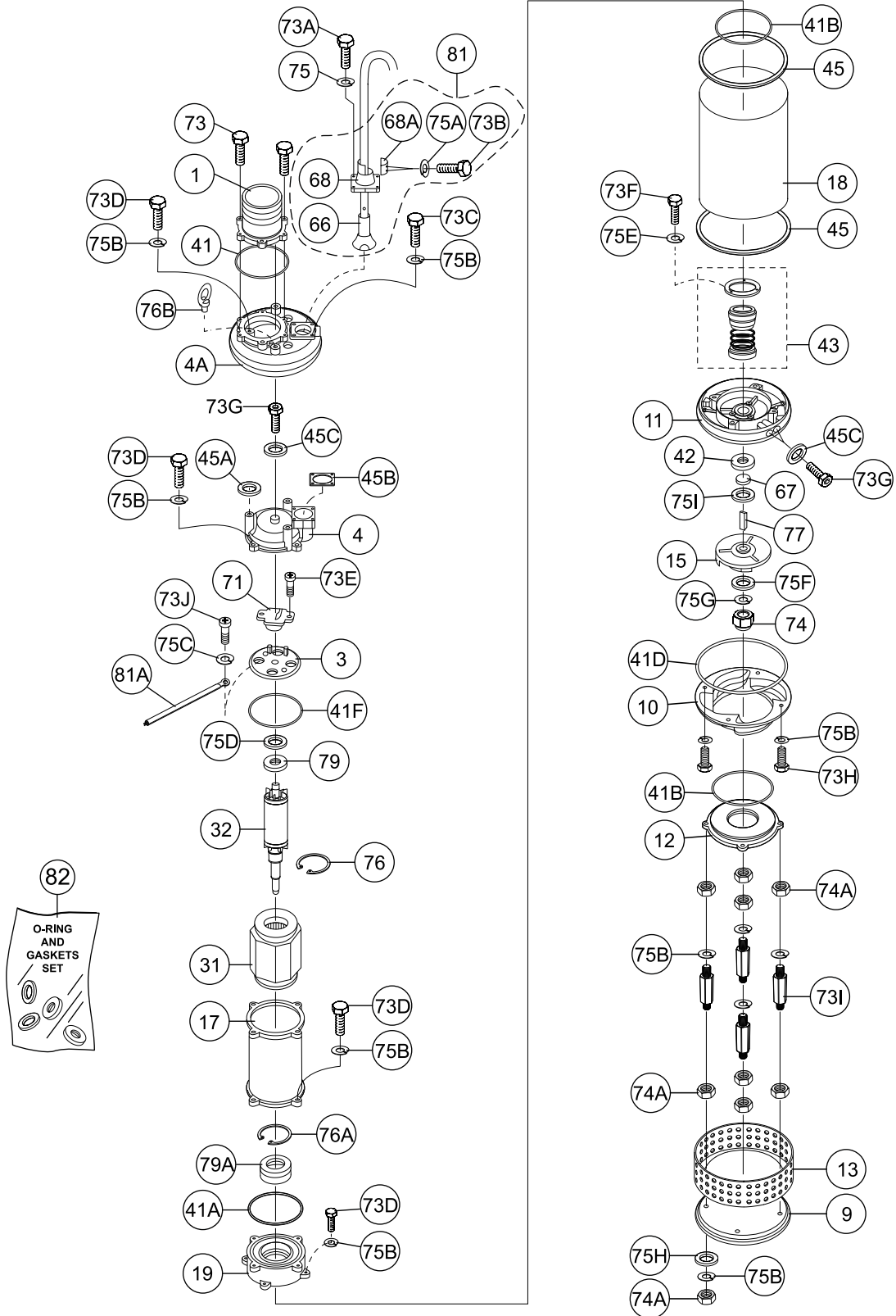
# ST61230/ST61460 ASSY.



# ST61230/ST61460 ASSY.

<u>NO.</u>	<u>PART NO.</u>	<u>PART NAME</u>	<u>QTY.</u>	<u>REMARKS</u>
1	01360954	DISCHARGE HEAD, NPT 6"	1	
3	0336FS-1125	SWITCH PLATE	1	
4	0436FS-1125	MOTOR COVER	1	
4A	0436FS-1125F	UPPER COVER	1	
9	0935FS-1125	BASE PLATE	1	
10	1036FS-1125	PUMP CASING	1	
11	1136FS-1125	SEAL BRACKET	1	
12	1236FS-1125B	INLET PLATE, 6"	1	
13	13431512511	STRAINER, 15MM	1	
15	1541FS6110158	IMPELLER	1	
17	1736190320	MOTOR FRAME	1	
18	1843FS-1125	OUTER CASE	1	
19	1936FS1125	BEARING BRACKET	1	
31	313220616F6	STATOR.....	1	ST61230
31	313440616F6	STATOR.....	1	ST61460
32	323FS-1125	SHAFT/ROTOR W/O BEARING	1	
41\$	411057-01	O-RING	1	
41A\$	411031-02	O-RING	1	
41B\$	411031-14	O-RING	2	
41D\$	411031-00	O-RING	1	
41F\$	411035-03	O-RING	1	
42	4214335-01	OIL SEAL	1	
43	432230-01	MECHANICAL SEAL	1	
45\$	456FS-112510	GASKET	2	
45A\$	451FS-112510-2	GASKET	3	
45B\$	451FS-112510-1	GASKET	1	
45C\$	459010	GASKET	3	
66#	66715145-1	CABLE GLAND	1	
67	674335-01	SHAFT SLEEVE	1	
68#	68363	GLAND HOLDER	1	
68A#	68363A	GLAND HOLDER	1	
71	7128-08	THERMAL PROTECTOR.....	1	ST61230
71	BYH-15-DR	THERMAL PROTECTOR.....	1	ST61460
73	73431120351	SCREW, HEX. M12	6	
73A	73431080601	SCREW, HEX. M8	4	
73A	73431080551	SCREW, HEX. M8	4	
73B#	73431060201	SCREW, HEX. M6	2	
73C	73431100401	SCREW, HEX. M10	2	
73D	73431100351	SCREW, HEX. M10	13	
73E	73433040121	SCREW, ROUND CROSS M4	2	
73F	73431050121	SCREW, HEX. M5	3	
73G	73432100161	SCREW, SOCKET HEX.M10	3	
73H	73431100401	SCREW, FLAT HEX.M10	4	
73I	73437101021	SCREW, STAND-OFF M10	4	
73J	73303040081	SCREW, ROUND CROSS M4	1	
74	7434316	NUT, M16	1	
74A	7414310	NUT, M10	12	

# ST61230/ST61460 ASSY.



## ST61230/ST61460 ASSY.

<u>NO.</u>	<u>PART NO.</u>	<u>PART NAME</u>	<u>QTY.</u>	<u>REMARKS</u>
75	753430008-01	WASHER, LOCK M8	4	
75A#	753430006-01	WASHER, LOCK, M6	2	
75B	753430010-01	WASHER, LOCK, M10	27	
75C	757300004	WASHER, LOCK, M4	1	
75D	751306306	WAVE WASHER	1	
75E	753430005-01	WASHER, LOCK M5	3	
75F	752430016-03	WASHER	1	
75G	753430016-01	WASHER, LOCK, M16	1	
75H	752430010-01	WASHER	4	
75I	752430025-01	WASHER	3	
76	7630STW40	SNAP RING .....	1	ST61230
76A	7630RTW90	SNAP RING .....	1	ST61460
76B	7607-01	RING FASTENER, M12	2	
77	771433-01	KEY, 7X7X18	1	
79	79363061	BEARING, 6306	1	
79A	79363081	BEARING, 6308	2	
81	8102804150171	CABLE, 50 FT., ST61230.....	1	INCLUDES ITEMS W/#
81	8102554150171	CABLE, 50 FT., ST61460.....	1	INCLUDES ITEMS W/#
81A	81G0801	EARTH LEAD	1	
81A	811202	EARTH LEAD	1	
82	86414110	O-RING AND GASKET SET .....	1	INCLUDES ITEMS W/\$

# PARTS MANUAL

## HERE'S HOW TO GET HELP

PLEASE HAVE THE MODEL AND SERIAL  
NUMBER ON-HAND WHEN CALLING

### UNITED STATES

#### *Multiquip Inc.*

(310) 537- 3700  
6141 Katella Avenue Suite 200  
Cypress, CA 90630  
E-MAIL: [mq@multiquip.com](mailto:mq@multiquip.com)  
WEBSITE: [www.multiquip.com](http://www.multiquip.com)

---

### CANADA

#### *Multiquip*

(450) 625-2244  
4110 Industriel Boul.  
Laval, Quebec, Canada H7L 6V3  
E-MAIL: [infocanada@multiquip.com](mailto:infocanada@multiquip.com)

### UNITED KINGDOM

#### *Multiquip (UK) Limited Head Office*

0161 339 2223  
Unit 2, Northpoint Industrial Estate, Globe Lane,  
Dukinfield, Cheshire SK16 4UJ  
E-MAIL: [sales@multiquip.co.uk](mailto:sales@multiquip.co.uk)

© COPYRIGHT 2024, MULTIQUIP INC.

Multiquip Inc, the MQ logo are registered trademarks of Multiquip Inc. and may not be used, reproduced, or altered without written permission. All other trademarks are the property of their respective owners and used with permission.

This manual MUST accompany the equipment at all times. This manual is considered a permanent part of the equipment and should remain with the unit if resold.

The information and specifications included in this publication were in effect at the time of approval for printing. Illustrations, descriptions, references and technical data contained in this manual are for guidance only and may not be considered as binding. Multiquip Inc. reserves the right to discontinue or change specifications, design or the information published in this publication at any time without notice and without incurring any obligations.

