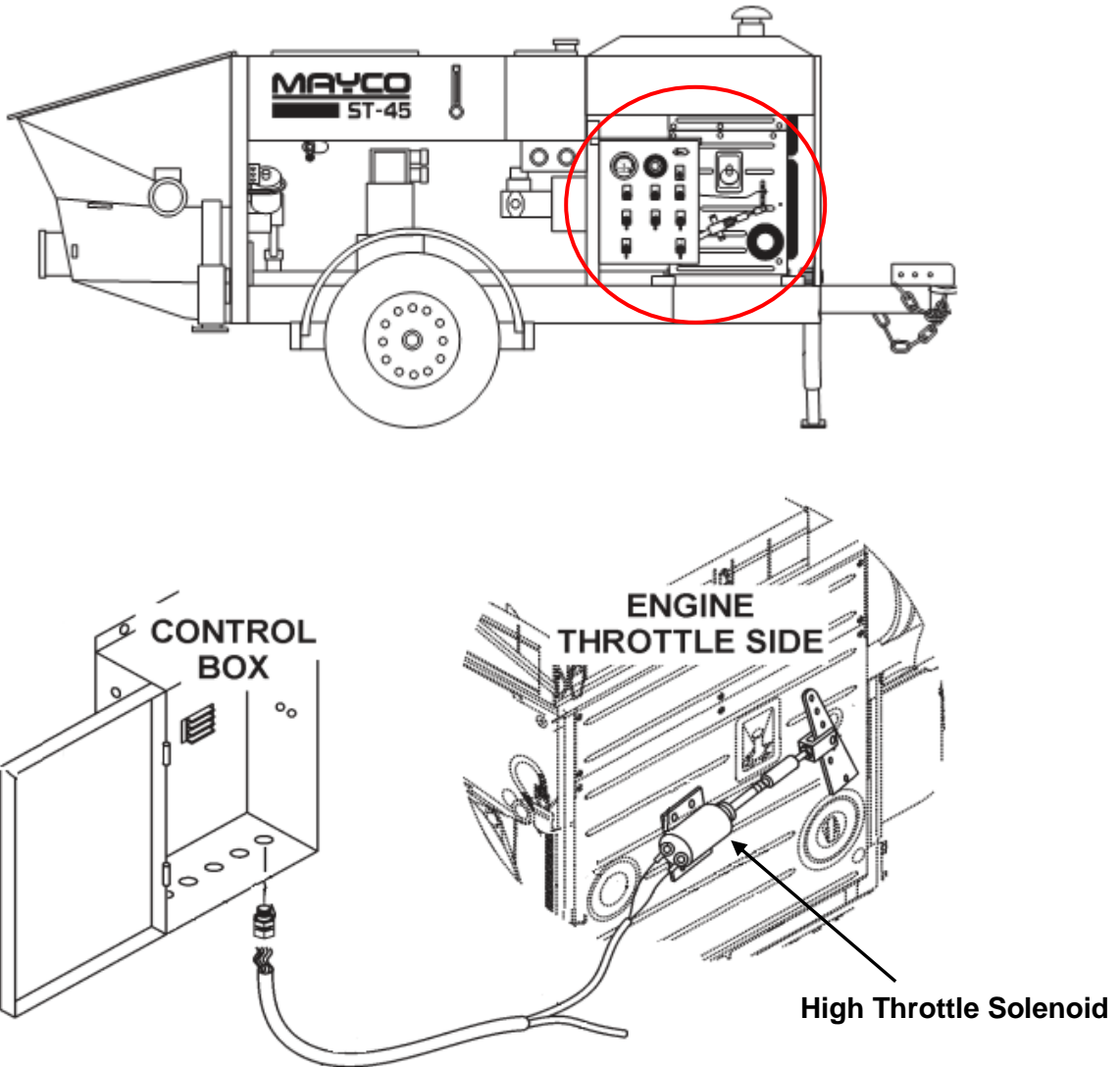




This bulletin is provided for technical reference and service related updates. If you have any questions, comments or do not wish to receive these e-mails, please reply to this e-mail or call the Service Technical Support Group 800 478-1244.

HIGH THROTTLE SOLENOID

If your MAYCO pump has a High Throttle Solenoid that is not working, use this documentation as a guide how to bypass and check if the primary solenoid is at fault.

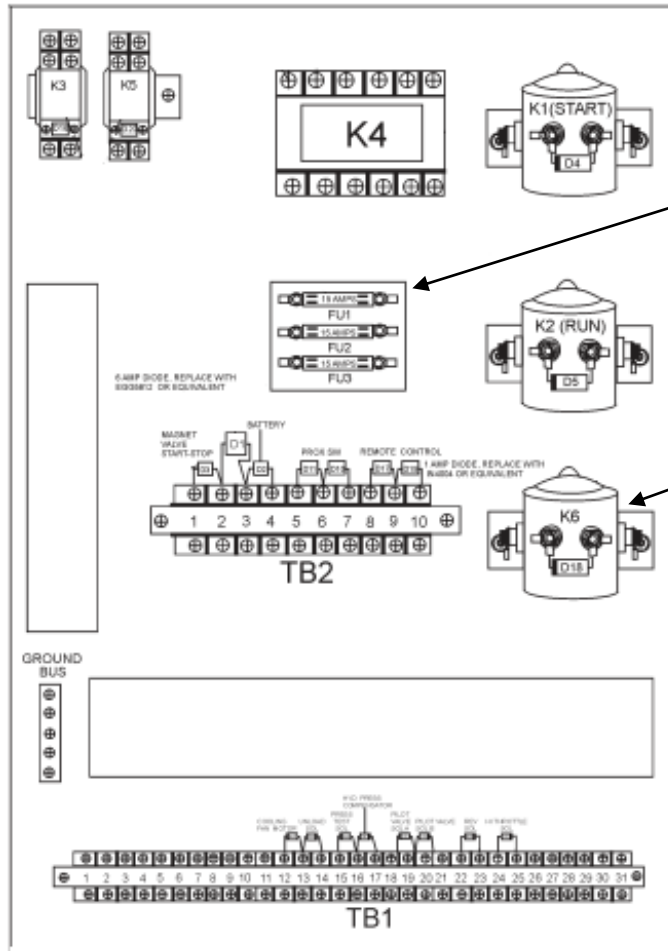
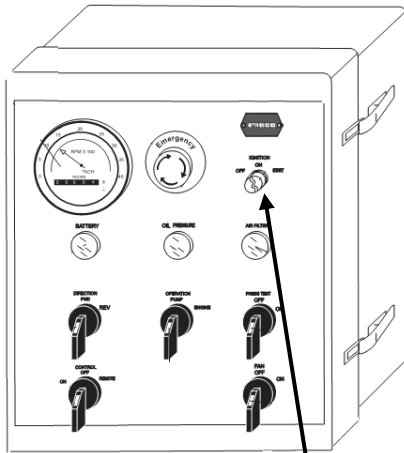


INSIDE CONTROL BOX

Inspect 15 amp fuses inside control box.

If fuses are good then bypass the **K6** solenoid, if bypassing the solenoid activates the **High Throttle Solenoid**, either the **K6** solenoid or the solenoid **diode** is bad.

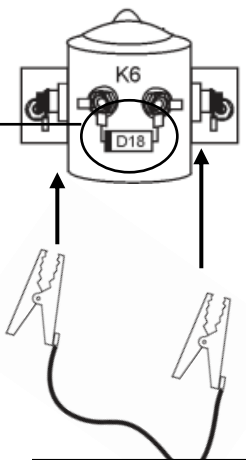
(See instructions below)



15 amp fuses
MQ PART# EM97078

K6 Solenoid
MQ PART# EM97027

Diode
MQ PART# EM98002



BYPASSING THE SOLENOID

1. Turn the pump control switch to the on position.
2. Turn the ignition switch to the on position.
3. Use a jumper wire to bypass the **K6** solenoid.

(If **High Throttle Solenoid** activates after bypassing)

4. Remove (isolate) **diode** and check for continuity in one direction.
5. If **diode** has continuity in both directions, replace bad **diode**.
6. If **diode** checks out fine then replace **K6** solenoid.

