

STXDF DRIVE ADAPTER & SPIDER INSTALLATION

The purpose of this Technical Information document is to provide the service technician with specific instructions to ensure proper installation of the spider and drive adapter.

NOTE:

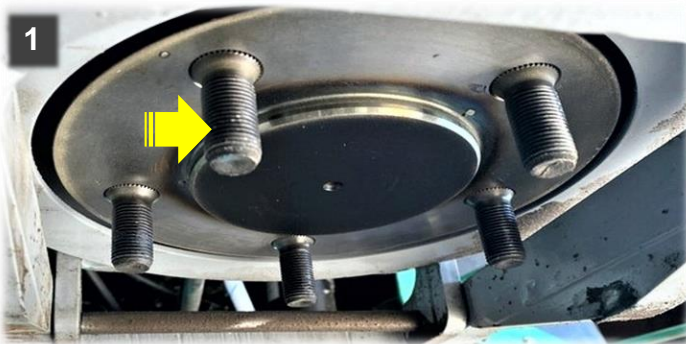
- Starting with S/N NG2005096 and above, units will have the new 14mm style spiders with 14mm bolts
- Spiders through the Multiquip Parts Dept. will be the new 14mm style spiders with the 14mm bolt holes

WORK SAFELY!

Only a qualified service technician with proper training should perform this procedure. Follow all shop safety rules while performing this procedure.

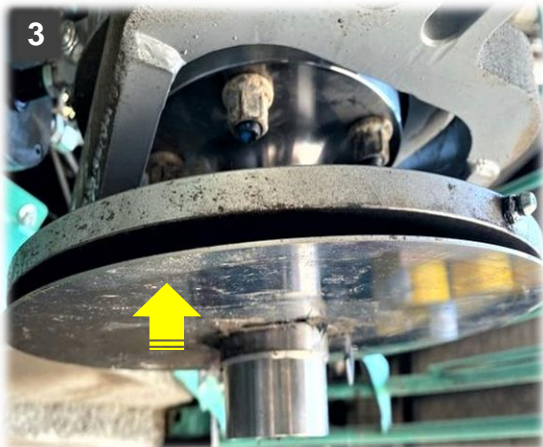
Before installing the new drive adapter, clean the stub free of dirt, old Loctite and grease. Spray clean with brake clean products and allow to fully dry, then apply 242 Loctite onto the studs of the drive motor, where the drive adapter fastening nuts will be positioned.

Install the drive adapter and install the nuts over stud ends coated with 242 Loctite, torque to 100 ft-lb in a cross pattern



Install the thrust plate assy. and temporarily secure it in place with a clamp or hook to hold up the thrust plate assy.

Install O-ring up against machined shoulder of the drive adapter.



STXDF DRIVE ADAPTER & SPIDER INSTALLATION

Apply a heavy amount of anti-seize at the end of the drive adapter shaft below the O-ring



Thoroughly clean the face and threaded holes at bottom end of the drive adapter shaft with brake cleaner **ensuring it is dry and free of oil or anti-seize**



OLD STYLE
Uses M8 Flange head bolts



NEW STYLE
Uses 14mm bolts

Carefully raise the spider assy. up onto the drive adapter shaft. Align the fastener holes on the spider to the drive adapter and secure.



STXDF DRIVE ADAPTER & SPIDER INSTALLATION

The use of new hardware is required to maintain the strength of the assembly. Clean the Allen head bolts with brake cleaner and dry them. Apply 242 Loctite and install them with the hardened washers, for the **Old Style** torque them to 90 ft-lb or **New Style** torque to 113 ft-lb in a cross pattern. Refer to the **Step Torque Chart below**.



Install the plastic cover into the bottom of the spider



PLEASE NOTE

- Allow the Loctite time to cure before using the trowel
- Replace and re-torque the spider bolts every 100 hours as a normal service interval. (Reference the Technical Information (TI) document "STXDF Spider Bolts Service Interval") for service interval and maintenance

3-STEP TORQUE (STAR PATTERN)

1 ST	Torque to 40 ~ 60 ft-lb
2 ND	Torque to 90 ft-lb
3 RD	Torque to 113 ft-lb