



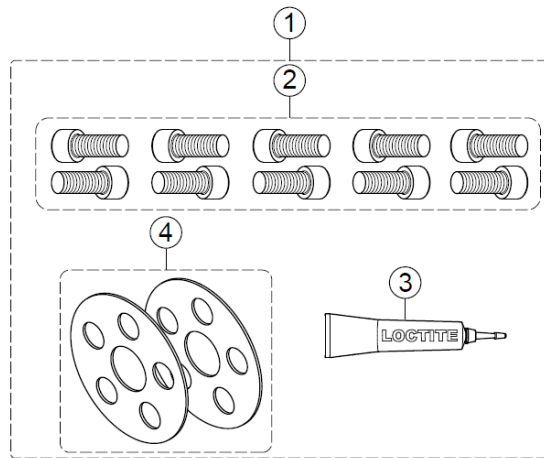
The information and specifications included in this publication were in effect at the time of approval for printing. Illustrations, descriptions, references and technical data contained in this document are for guidance only and may not be considered as binding. Multiquip Inc. reserves the right to discontinue or change specifications, design or the information published in this publication at any time without notice and without incurring any obligations.

SPIDER BOLTS SERVICE INTERVAL

Existing bolts on both spider assemblies may self-loosen due to normal material yield. Replace the left and right side spider assembly zinc plated bolts and hardened washers every 100 hours of run time as a normal service interval. Following are the required service items and service procedure.

Service Items/Replacement Hardware and Loctite

Item	Part No.	Description	Qty.	Remarks
1	43111-SK	Kit, STXDF Spider Hardened Washer	1	Includes items 2-4
2	939654	Screw, SHC M12-1.75 x 30 mm 12.9	10	
3	1477	Loctite #242 Blue 0.5 cc Bottle	1	
4	43784	Washer, STXDF, Spider	2	



© COPYRIGHT 2020, MULTIQUIP INC, Rev. 0 (08022021)



The information and specifications included in this publication were in effect at the time of approval for printing. Illustrations, descriptions, references and technical data contained in this document are for guidance only and may not be considered as binding. Multiquip Inc. reserves the right to discontinue or change specifications, design or the information published in this publication at any time without notice and without incurring any obligations.

SPIDER BOLTS SERVICE INTERVAL

WORK SAFELY!

Only a qualified service technician with proper training should perform this procedure. Follow all shop safety rules while performing this procedure.

TROWEL SAFETY

CAUTION

- DO NOT attempt service on a running machine.

ENGINE SAFETY

CAUTION

- NEVER touch the hot exhaust manifold, muffler or cylinder. Allow these parts to cool before servicing the equipment.

FUEL SAFETY

CAUTION

- ALWAYS use protective gloves when handling the propane tank. Liquid propane gas will cause cold burns if it comes into contact with the skin.

BATTERY SAFETY

DANGER

- DO NOT expose the battery to open flames, sparks, cigarettes, etc. The battery contains combustible gases and liquids. If these gases or liquids come into contact with a flame or spark, an explosion could occur.

CAUTION

- ALWAYS disconnect the NEGATIVE battery terminal before servicing the equipment.

LIFTING SAFETY

CAUTION

- NEVER allow any person to stand underneath the equipment while it is being lifted.
- Ride-on trowels are very heavy and awkward to move around. Use proper heavy lifting procedures and DO NOT attempt to lift the trowel by the guard rings.
- NEVER lift the trowel with the operator on the machine.

NOTICE

- Two lifting straps should have a minimum lifting capacity of 2,600 pounds (1,179 kg) and the lifting gear must be capable of lifting at least this amount.
- Before lifting, make sure that the lift loops are not damaged.
- ALWAYS make sure the crane or lifting device has been properly secured to the lift loops of the equipment.
- ALWAYS shut down the engine before transporting.
- DO NOT lift the machine to unnecessary heights.

© COPYRIGHT 2020, MULTIQUIP INC, Rev. 0 (08022021)

The information and specifications included in this publication were in effect at the time of approval for printing. Illustrations, descriptions, references and technical data contained in this document are for guidance only and may not be considered as binding. Multiquip Inc. reserves the right to discontinue or change specifications, design or the information published in this publication at any time without notice and without incurring any obligations.

SPIDER BOLTS SERVICE INTERVAL

REQUIRED TOOLS

- Torque wrench
- M12 x 1.75 tap
- Brake cleaner
- Compressed air

TROWEL PREPARATION

1. Make sure the trowel is turned off and **the engine is cool**.
2. Lift the trowel as shown in the *Lifting and Transporting* section of the STXDF Operation Manual.
3. Place the trowel on heavy-duty jack stands (Figure 2) on secure, level ground in an area that is free of dirt and debris.

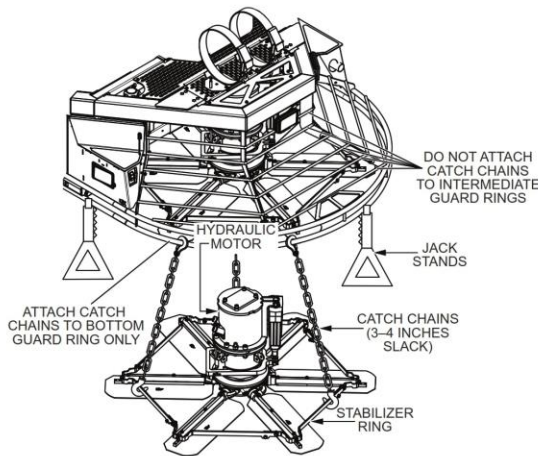


Figure 2. Prepare Trowel

CAUTION

The bolt removal process may result in the sudden separation of the spider assembly from the hydraulic motor shaft. The use of catch chains is recommended to prevent the spider assembly from falling and striking personnel, causing bodily harm.

4. Attach one end of three equally spaced straps or catch chains to the stabilizer ring (Figure 2). Attach the other end of these straps or chains to the **bottom guard ring** in a manner that would prevent the spider assembly from falling.

CAUTION

DO NOT use the intermediate guard rings to support the spider assembly.

NOTICE

Make sure the catch chains are positioned so that they are equally spaced, with **no more than 3 to 4 inches of slack**. The catch chains in Figure 2 appear longer than actual size. They are shown this way for clarity only.

BATTERY DISCONNECTION

1. To access the battery, pull upward on the rear right step (Figure 3) to remove it. Set the step aside.

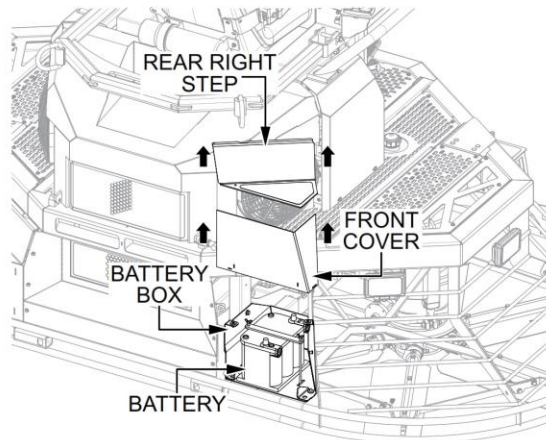


Figure 3. Access Battery

2. Remove the battery box front cover (Figure 3) and set it aside.
3. Disconnect the negative (**BLACK**) battery cable from the negative (-) terminal on the battery. See Figure 4.

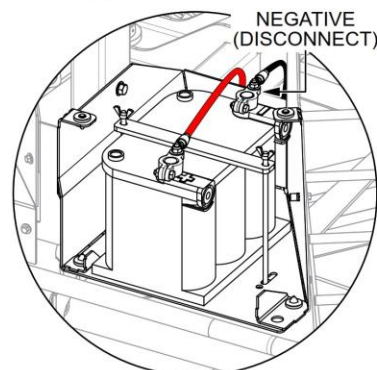


Figure 4. Disconnect Battery

The information and specifications included in this publication were in effect at the time of approval for printing. Illustrations, descriptions, references and technical data contained in this document are for guidance only and may not be considered as binding. MultiQuip Inc. reserves the right to discontinue or change specifications, design or the information published in this publication at any time without notice and without incurring any obligations.

SPIDER BOLTS SERVICE INTERVAL

SPIDER BOLT REPLACEMENT

1. Remove the left-side spider hub cap plug (Figure 5) and set it aside.

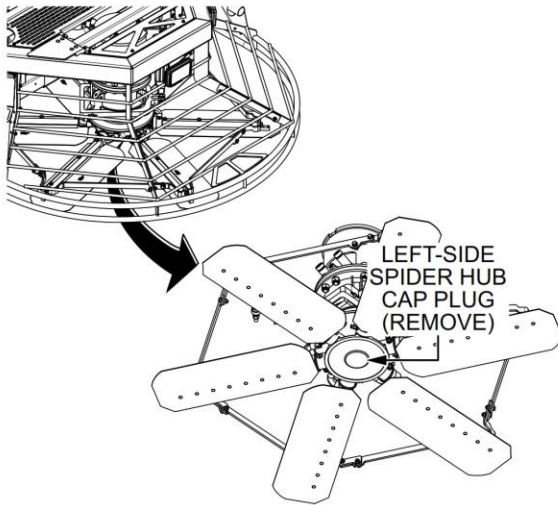


Figure 5. Remove Left-Side Spider Hub Cap Plug

2. Remove and discard the five existing M12-1.75 x 30 mm SHC bolts (Figure 6) securing the left-side spider assembly to the bottom of the left-side hydraulic motor.

NOTICE

DO NOT remove the center retaining bolt (hex flange type) from the spider assembly. Only the 5 surrounding screws (with socket head caps) are to be replaced.

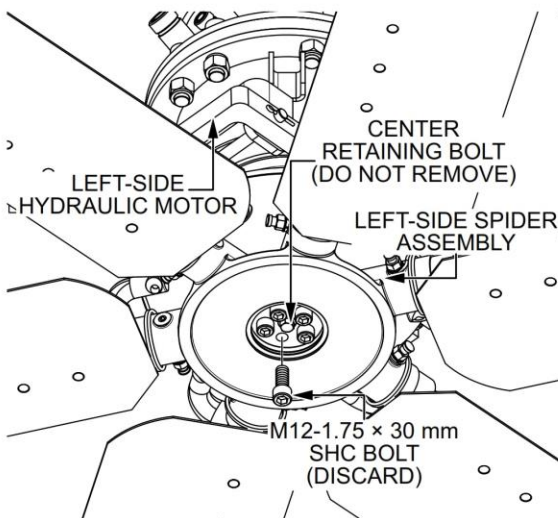


Figure 6. Remove Left-Side Spider Bolts

3. Using an M12 x 1.75 tap, recut the threads of the empty bolt holes to remove any Loctite® residue.
4. Use brake cleaner (Figure 7A) to clean out any debris from the empty bolt holes. When finished, use compressed air (Figure 7B) to remove any remaining residue.

NOTICE

Make sure the bolt holes are **clean and completely dry** before installing the new bolts.

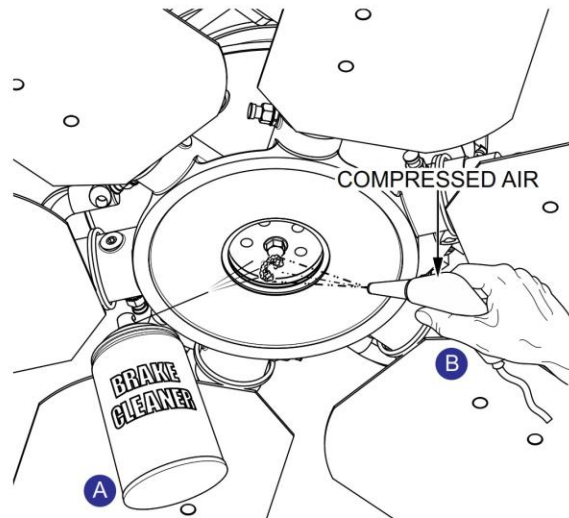


Figure 7. Clean Bolt Holes

5. Apply Loctite® Blue 242™ (P/N 1477) to the threads on five new M12-1.75 x 30 mm SHC bolts (P/N 939654). See Figure 8.

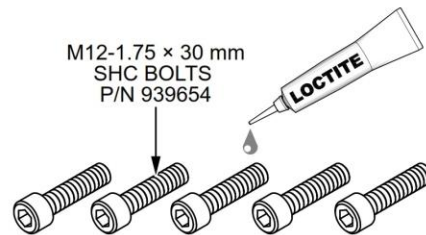


Figure 8. Apply Loctite® 242™ to New Bolts

SPIDER BOLTS SERVICE INTERVAL

6. Install the five new M12-1.75 x 30 mm SHC bolts (P/N 939654) with one washer (P/N 43784) as shown in Figure 9. Torque the bolts in a star pattern to 40 lbf-ft.

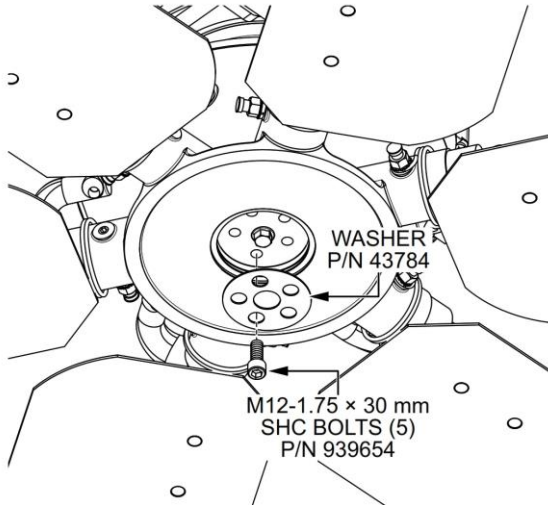


Figure 9. Install New Bolts and Washer

7. Re-torque all five M12-1.75 x 30 mm SHC bolts (P/N 939654) to 90 lbf-ft in a star pattern.
8. Reinstall the left-side spider hub cap plug.
9. Repeat steps 1–8 on the right-side spider assembly.

REASSEMBLY

1. Reconnect the negative (**BLACK**) battery cable to the negative (-) terminal on the battery.
2. Reinstall the battery box front cover and rear right step.