

PARTS MANUAL



TRAILERS SINGLE AXLE

**TRLR10W, TRLR10P, TRLRMP, TRLRMPXF,
TRLR25US, TRLR50WE, TRLR50XF, TRLR50XFE**

Revision #0 (11/23/16)

To find the latest revision of this
publication, visit our website at:
www.multiquip.com



THIS MANUAL MUST ACCOMPANY THE EQUIPMENT AT ALL TIMES.

TABLE OF CONTENTS

Trailers/Single Axle

Table Of Contents.....	2
Parts Ordering Procedures.....	3
Explanation Of Code In Remarks Column.....	4
Suggested Spare Parts	5
TRLR10W/10P/25US Nameplate and Decals	6-7
TRLR50XF/MP/50 Nameplate and Decals.....	8-9
TRLR10W/10P Trailer Assembly	10-11
TRLRMP/MPXF Trailer Assembly.....	12-13
TRLR25US Trailer Assembly	14-15
TRLR50W/50XF Trailer Assembly	16-17
TRLR50WE/50XFE Trailer Assembly	18-19
TRLR50WE/50XFE Trailer Assembly	20-21
TRLR10P/10W/MP/MPXF/25US Axle Comp....	22-23
TRLR50WE/50XF/50XFE Axle Components ...	24-25
10-Inch Electric Brake Assembly.....	26-27
Trailer Wiring Connections.....	28
Terms and Conditions of Sale — Parts	29

NOTICE

Specifications and part numbers are subject to change without notice.

PARTS ORDERING PROCEDURES

Ordering parts has never been easier! Choose from three easy options:

Effective:
January 1st, 2006

www.multiquip.com



Order via Internet (Dealers Only):

Order parts on-line using Multiquip's SmartEquip website!

- View Parts Diagrams
- Order Parts
- Print Specification Information



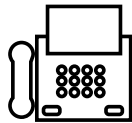
If you have an MQ Account, to obtain a Username and Password, E-mail us at: parts@multiquip.com.

To obtain an MQ Account, contact your District Sales Manager for more information.

Goto www.multiquip.com and click on **Order Parts** to log in and save!

Use the **internet** and qualify for a **5% Discount** on *Standard orders* for all orders which include complete part numbers.*

Note: Discounts Are Subject To Change



Order via Fax (Dealers Only):

All customers are welcome to order parts via Fax.

Domestic (US) Customers dial:
1-800-6-PARTS-7 (800-672-7877)

Fax your order in and qualify for a **2% Discount** on *Standard orders* for all orders which include complete part numbers.*

Note: Discounts Are Subject To Change



Order via Phone: Domestic (US) Dealers Call:
1-800-427-1244

Non-Dealer Customers:

Contact your local Multiquip Dealer for parts or call 800-427-1244 for help in locating a dealer near you.



International Customers should contact their local Multiquip Representatives for Parts Ordering information.

When ordering parts, please supply:

- | | |
|---|--|
| <input type="checkbox"/> Dealer Account Number | <input type="checkbox"/> Specify Preferred Method of Shipment: |
| <input type="checkbox"/> Dealer Name and Address | <input checked="" type="checkbox"/> UPS/Fed Ex <input checked="" type="checkbox"/> DHL |
| <input type="checkbox"/> Shipping Address (if different than billing address) | <input type="checkbox"/> Priority One <input checked="" type="checkbox"/> Truck |
| <input type="checkbox"/> Return Fax Number | <input type="checkbox"/> Ground |
| <input type="checkbox"/> Applicable Model Number | <input type="checkbox"/> Next Day |
| <input type="checkbox"/> Quantity, Part Number and Description of Each Part | <input type="checkbox"/> Second/Third Day |

NOTICE

All orders are treated as *Standard Orders* and will ship the same day if received prior to 3PM PST.

WE ACCEPT ALL MAJOR CREDIT CARDS!



EXPLANATION OF CODE IN REMARKS COLUMN

The following section explains the different symbols and remarks used in the Parts section of this manual. Use the help numbers found on the back page of the manual if there are any questions.

NOTICE

The contents and part numbers listed in the parts section are subject to change **without notice**. Multiquip does not guarantee the availability of the parts listed.

SAMPLE PARTS LIST

NO.	PART NO.	PART NAME	QTY.	REMARKS
1	12345	BOLT	1	INCLUDES ITEMS W/%
2%		WASHER, 1/4 IN.		NOT SOLD SEPARATELY
2%	12347	WASHER, 3/8 IN. ...	1	MQ-45T ONLY
3	12348	HOSE	A/R	MAKE LOCALLY
4	12349	BEARING	1	S/N 2345B AND ABOVE

NO. Column

Unique Symbols — All items with same unique symbol (@, #, +, %, or >) in the number column belong to the same assembly or kit, which is indicated by a note in the “Remarks” column.

Duplicate Item Numbers — Duplicate numbers indicate multiple part numbers, which are in effect for the same general item, such as different size saw blade guards in use or a part that has been updated on newer versions of the same machine.

NOTICE

When ordering a part that has more than one item number listed, check the remarks column for help in determining the proper part to order.

PART NO. Column

Numbers Used — Part numbers can be indicated by a number, a blank entry, or TBD.

TBD (To Be Determined) is generally used to show a part that has not been assigned a formal part number at the time of publication.

A blank entry generally indicates that the item is not sold separately or is not sold by Multiquip. Other entries will be clarified in the “Remarks” Column.

QTY. Column

Numbers Used — Item quantity can be indicated by a number, a blank entry, or A/R.

A/R (As Required) is generally used for hoses or other parts that are sold in bulk and cut to length.

A blank entry generally indicates that the item is not sold separately. Other entries will be clarified in the “Remarks” Column.

REMARKS Column

Some of the most common notes found in the “Remarks” Column are listed below. Other additional notes needed to describe the item can also be shown.

Assembly/Kit — All items on the parts list with the same unique symbol will be included when this item is purchased.

Indicated by:

“INCLUDES ITEMS W/(unique symbol)”

Serial Number Break — Used to list an effective serial number range where a particular part is used.

Indicated by:

“S/N XXXXX AND BELOW”

“S/N XXXX AND ABOVE”

“S/N XXXX TO S/N XXX”

Specific Model Number Use — Indicates that the part is used only with the specific model number or model number variant listed. It can also be used to show a part is NOT used on a specific model or model number variant.

Indicated by:

“XXXXX ONLY”

“NOT USED ON XXXX”

“Make/Obtain Locally” — Indicates that the part can be purchased at any hardware shop or made out of available items. Examples include battery cables, shims, and certain washers and nuts.

“Not Sold Separately” — Indicates that an item cannot be purchased as a separate item and is either part of an assembly/kit that can be purchased, or is not available for sale through Multiquip.

SUGGESTED SPARE PARTS

(TRLR10W, TRLR10P, TRLRMP, TRLRMPXF, TRLR25US, TRLR50W, TRLR50XF, TRLR50XFE)

SINGLE TRAILERS

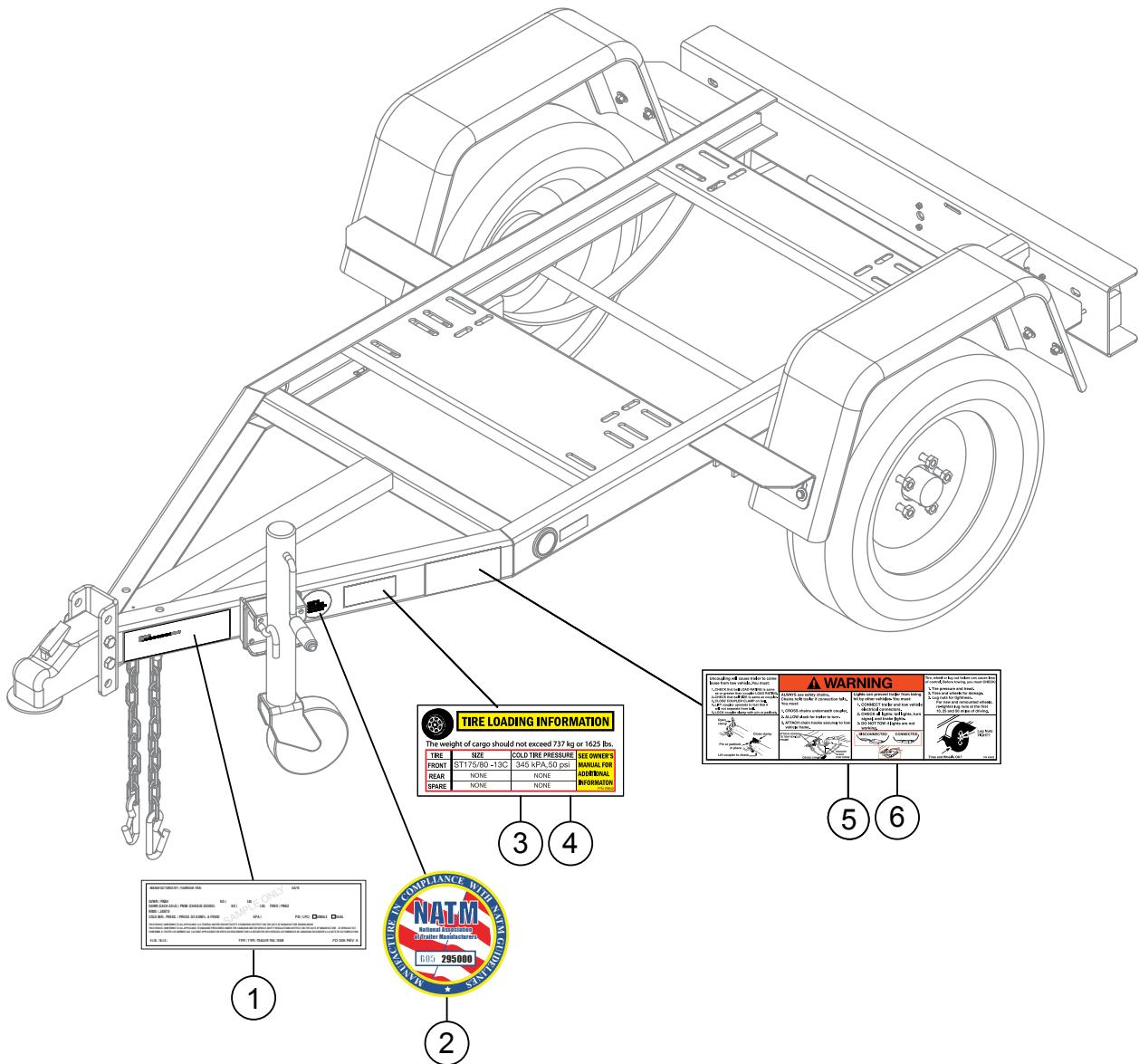
1 to 3 units

Qty.	P/N	Description
129242	LIGHT, TAIL (CURB) SIDE
129243	LIGHT, TAIL (ROAD) SIDE
129563	LIGHT, 2" ROUND AMBER TRLR10W/P, TRLR50WE/XFE
129898	LIGHT, 2-1/2" SIDE MARKER, AMBER TRLRMP, TRLR25US, TRLR50W/XF
13469	DUST CAP
229194	LUG NUT, 1/2-20

NOTICE

Part numbers on this Suggested Spare Parts list may supersede/replace the part numbers shown in the following parts lists.

TRLR10W/TRLR10P/TRLR25US DECALS



TRLR10W/TRLR10P/TRLR25US DECALS

<u>NO.</u>	<u>PART NO.</u>	<u>PART NAME</u>	<u>QTY.</u>	<u>REMARKS</u>
1		DECAL, MULTIPLE TRAILER VIN.....	1.....	CONTACT MQ PARTS DEPARTMENT
2	EE56342	DECAL, NATM MANUFACTURER COMPLIANCE	1	
3	29842	DECAL, TIRE LOADING, TRLR10/MP	1	
4	EE56314	OVERLAY, TIRE LABEL	1	
5	49002	DECAL, TRLR HITCH/WHEEL WARNING	1	
6	EE56313	OVERLAY, VIN LABEL	1	

TRLR50XF/TRLRMP/TRLR50 DECALS

FUELING INSTRUCTIONS

For best results:

1. Elevate trailer tongue slightly.
2. Fill trailer tank first.
3. Fill generator tank next.

Optimum venting will be achieved as a result of this procedure.

7

CAUTION

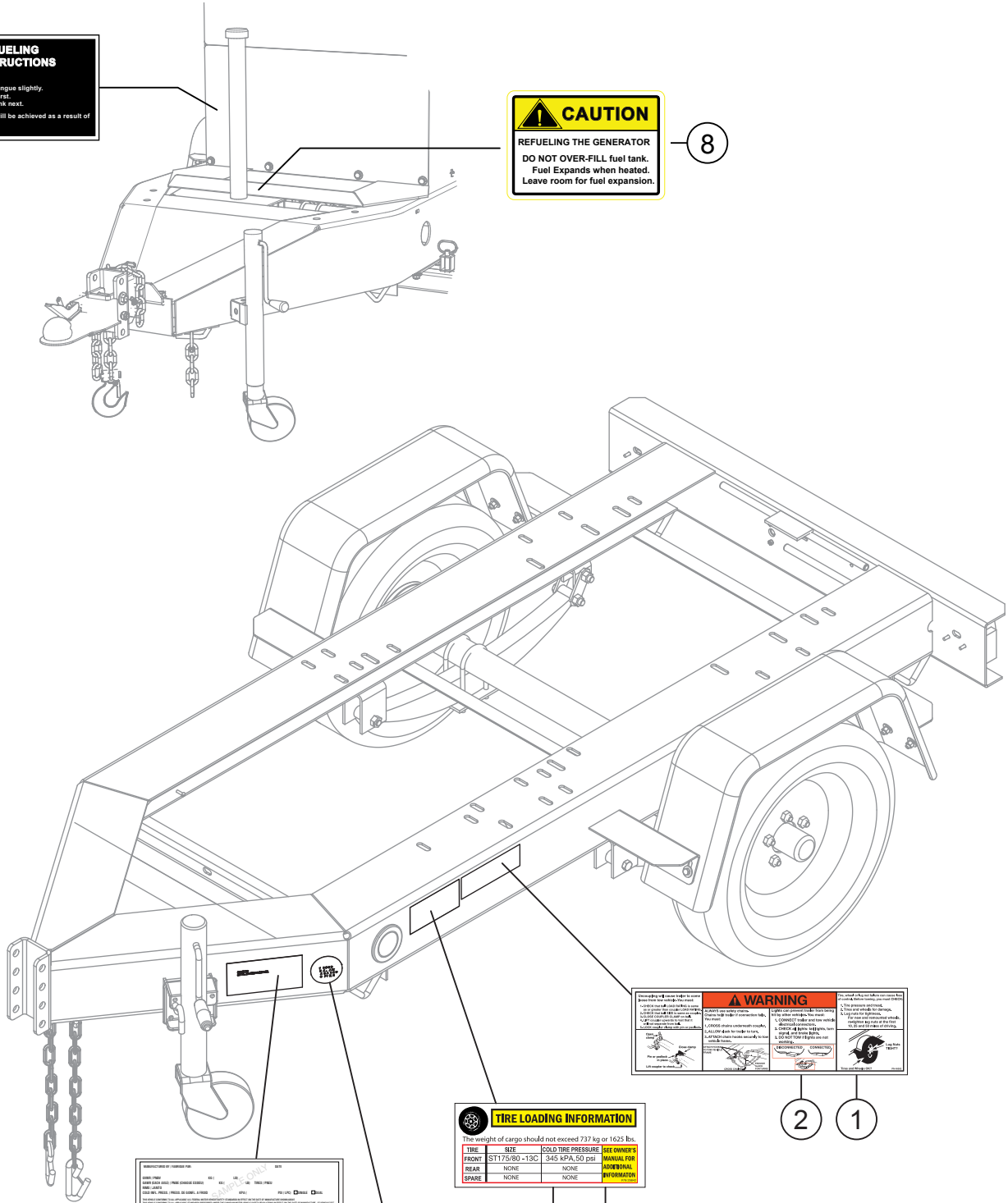
REFUELING THE GENERATOR

DO NOT OVER-FILL fuel tank.

Fuel Expands when heated.

Leave room for fuel expansion.

8



WARNING

1. Do not use the generator in an enclosed space. 2. Do not use the generator in a confined space. 3. Do not use the generator in a poorly ventilated area. 4. Do not use the generator in a room with a flammable atmosphere. 5. Do not use the generator in a room with a high concentration of dust or lint. 6. Do not use the generator in a room with a high concentration of oil mist. 7. Do not use the generator in a room with a high concentration of carbon dioxide. 8. Do not use the generator in a room with a high concentration of hydrogen sulfide. 9. Do not use the generator in a room with a high concentration of sulfur dioxide. 10. Do not use the generator in a room with a high concentration of nitrogen dioxide. 11. Do not use the generator in a room with a high concentration of carbon monoxide. 12. Do not use the generator in a room with a high concentration of hydrogen cyanide. 13. Do not use the generator in a room with a high concentration of hydrogen chloride. 14. Do not use the generator in a room with a high concentration of hydrogen fluoride. 15. Do not use the generator in a room with a high concentration of hydrogen bromide. 16. Do not use the generator in a room with a high concentration of hydrogen iodide. 17. Do not use the generator in a room with a high concentration of hydrogen peroxide. 18. Do not use the generator in a room with a high concentration of hydrogen sulfide. 19. Do not use the generator in a room with a high concentration of hydrogen cyanide. 20. Do not use the generator in a room with a high concentration of hydrogen chloride. 21. Do not use the generator in a room with a high concentration of hydrogen fluoride. 22. Do not use the generator in a room with a high concentration of hydrogen bromide. 23. Do not use the generator in a room with a high concentration of hydrogen iodide. 24. Do not use the generator in a room with a high concentration of hydrogen peroxide. 25. Do not use the generator in a room with a high concentration of hydrogen sulfide. 26. Do not use the generator in a room with a high concentration of hydrogen cyanide. 27. Do not use the generator in a room with a high concentration of hydrogen chloride. 28. Do not use the generator in a room with a high concentration of hydrogen fluoride. 29. Do not use the generator in a room with a high concentration of hydrogen bromide. 30. Do not use the generator in a room with a high concentration of hydrogen iodide. 31. Do not use the generator in a room with a high concentration of hydrogen peroxide. 32. Do not use the generator in a room with a high concentration of hydrogen sulfide. 33. Do not use the generator in a room with a high concentration of hydrogen cyanide. 34. Do not use the generator in a room with a high concentration of hydrogen chloride. 35. Do not use the generator in a room with a high concentration of hydrogen fluoride. 36. Do not use the generator in a room with a high concentration of hydrogen bromide. 37. Do not use the generator in a room with a high concentration of hydrogen iodide. 38. Do not use the generator in a room with a high concentration of hydrogen peroxide. 39. Do not use the generator in a room with a high concentration of hydrogen sulfide. 40. Do not use the generator in a room with a high concentration of hydrogen cyanide. 41. Do not use the generator in a room with a high concentration of hydrogen chloride. 42. Do not use the generator in a room with a high concentration of hydrogen fluoride. 43. Do not use the generator in a room with a high concentration of hydrogen bromide. 44. Do not use the generator in a room with a high concentration of hydrogen iodide. 45. Do not use the generator in a room with a high concentration of hydrogen peroxide. 46. Do not use the generator in a room with a high concentration of hydrogen sulfide. 47. Do not use the generator in a room with a high concentration of hydrogen cyanide. 48. Do not use the generator in a room with a high concentration of hydrogen chloride. 49. Do not use the generator in a room with a high concentration of hydrogen fluoride. 50. Do not use the generator in a room with a high concentration of hydrogen bromide. 51. Do not use the generator in a room with a high concentration of hydrogen iodide. 52. Do not use the generator in a room with a high concentration of hydrogen peroxide. 53. Do not use the generator in a room with a high concentration of hydrogen sulfide. 54. Do not use the generator in a room with a high concentration of hydrogen cyanide. 55. Do not use the generator in a room with a high concentration of hydrogen chloride. 56. Do not use the generator in a room with a high concentration of hydrogen fluoride. 57. Do not use the generator in a room with a high concentration of hydrogen bromide. 58. Do not use the generator in a room with a high concentration of hydrogen iodide. 59. Do not use the generator in a room with a high concentration of hydrogen peroxide. 60. Do not use the generator in a room with a high concentration of hydrogen sulfide. 61. Do not use the generator in a room with a high concentration of hydrogen cyanide. 62. Do not use the generator in a room with a high concentration of hydrogen chloride. 63. Do not use the generator in a room with a high concentration of hydrogen fluoride. 64. Do not use the generator in a room with a high concentration of hydrogen bromide. 65. Do not use the generator in a room with a high concentration of hydrogen iodide. 66. Do not use the generator in a room with a high concentration of hydrogen peroxide. 67. Do not use the generator in a room with a high concentration of hydrogen sulfide. 68. Do not use the generator in a room with a high concentration of hydrogen cyanide. 69. Do not use the generator in a room with a high concentration of hydrogen chloride. 70. Do not use the generator in a room with a high concentration of hydrogen fluoride. 71. Do not use the generator in a room with a high concentration of hydrogen bromide. 72. Do not use the generator in a room with a high concentration of hydrogen iodide. 73. Do not use the generator in a room with a high concentration of hydrogen peroxide. 74. Do not use the generator in a room with a high concentration of hydrogen sulfide. 75. Do not use the generator in a room with a high concentration of hydrogen cyanide. 76. Do not use the generator in a room with a high concentration of hydrogen chloride. 77. Do not use the generator in a room with a high concentration of hydrogen fluoride. 78. Do not use the generator in a room with a high concentration of hydrogen bromide. 79. Do not use the generator in a room with a high concentration of hydrogen iodide. 80. Do not use the generator in a room with a high concentration of hydrogen peroxide. 81. Do not use the generator in a room with a high concentration of hydrogen sulfide. 82. Do not use the generator in a room with a high concentration of hydrogen cyanide. 83. Do not use the generator in a room with a high concentration of hydrogen chloride. 84. Do not use the generator in a room with a high concentration of hydrogen fluoride. 85. Do not use the generator in a room with a high concentration of hydrogen bromide. 86. Do not use the generator in a room with a high concentration of hydrogen iodide. 87. Do not use the generator in a room with a high concentration of hydrogen peroxide. 88. Do not use the generator in a room with a high concentration of hydrogen sulfide. 89. Do not use the generator in a room with a high concentration of hydrogen cyanide. 90. Do not use the generator in a room with a high concentration of hydrogen chloride. 91. Do not use the generator in a room with a high concentration of hydrogen fluoride. 92. Do not use the generator in a room with a high concentration of hydrogen bromide. 93. Do not use the generator in a room with a high concentration of hydrogen iodide. 94. Do not use the generator in a room with a high concentration of hydrogen peroxide. 95. Do not use the generator in a room with a high concentration of hydrogen sulfide. 96. Do not use the generator in a room with a high concentration of hydrogen cyanide. 97. Do not use the generator in a room with a high concentration of hydrogen chloride. 98. Do not use the generator in a room with a high concentration of hydrogen fluoride. 99. Do not use the generator in a room with a high concentration of hydrogen bromide. 100. Do not use the generator in a room with a high concentration of hydrogen iodide.

2

1

TIRE LOADING INFORMATION

The weight of cargo should not exceed 727 kg or 1625 lbs.

TIRE	SEE	COLD TIRE PRESSURE	SEE OWNER'S MANUAL FOR
FRONT	ST175/80-13C	345 kPa, 50 psi	ADDITIONAL INFORMATION
REAR	NONE	NONE	ADDITIONAL INFORMATION
SPARE	NONE	NONE	ADDITIONAL INFORMATION

4

3

MANUFACTURED BY VERBODEN FOR
 MODEL NUMBER
 SERIAL NUMBER
 DATE OF MANUFACTURE
 VERBODEN FOR

6

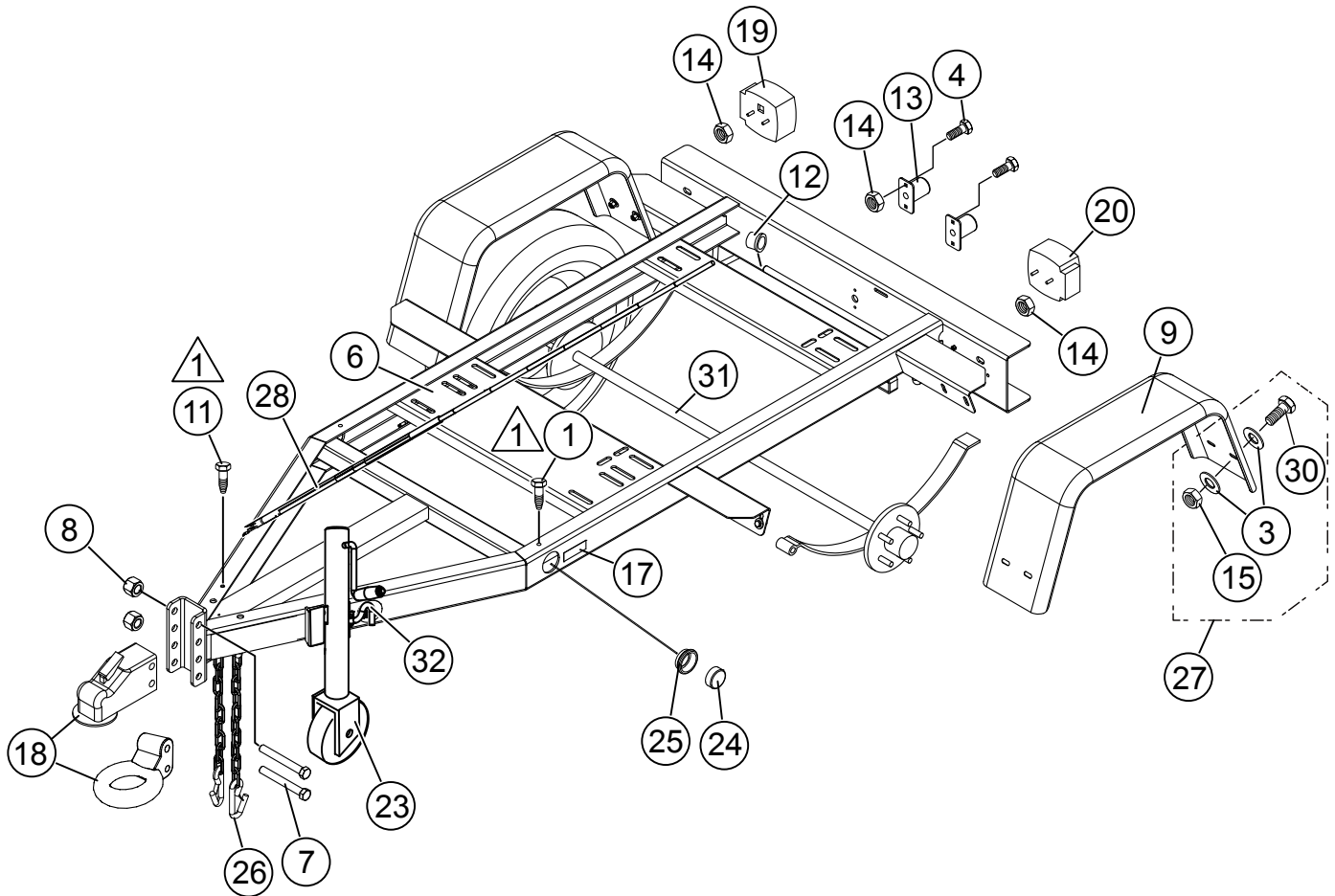


5

TRLR50XF/TRLRMP/TRLR50 DECALS

<u>NO.</u>	<u>PART NO.</u>	<u>PART NAME</u>	<u>QTY.</u>	<u>REMARKS</u>
1	49002	DECAL, TRLR HITCH/WHEEL WARNING	1	
2	EE56313	OVERLAY, VIN LABEL	1	
3	EE56312	LABEL, VIN & TIRE	1	
4	EE56314	OVERLAY, TIRE LABEL	1	
5	EE56342	DECAL, NATM MANUFACTURER COMPLIANCE	1	
6		DECAL, MULTIPLE TRAILER VIN	1	CONTACT MQ PARTS DEPARTMENT
7	EE56030	DECAL, FUELING INSTRUCTIONS	1	
8	EE52343	DECAL, CAUTION, DO NOT OVERFILL FUEL TANK	1	

TRLR10W/TRLR10P TRAILER ASSY

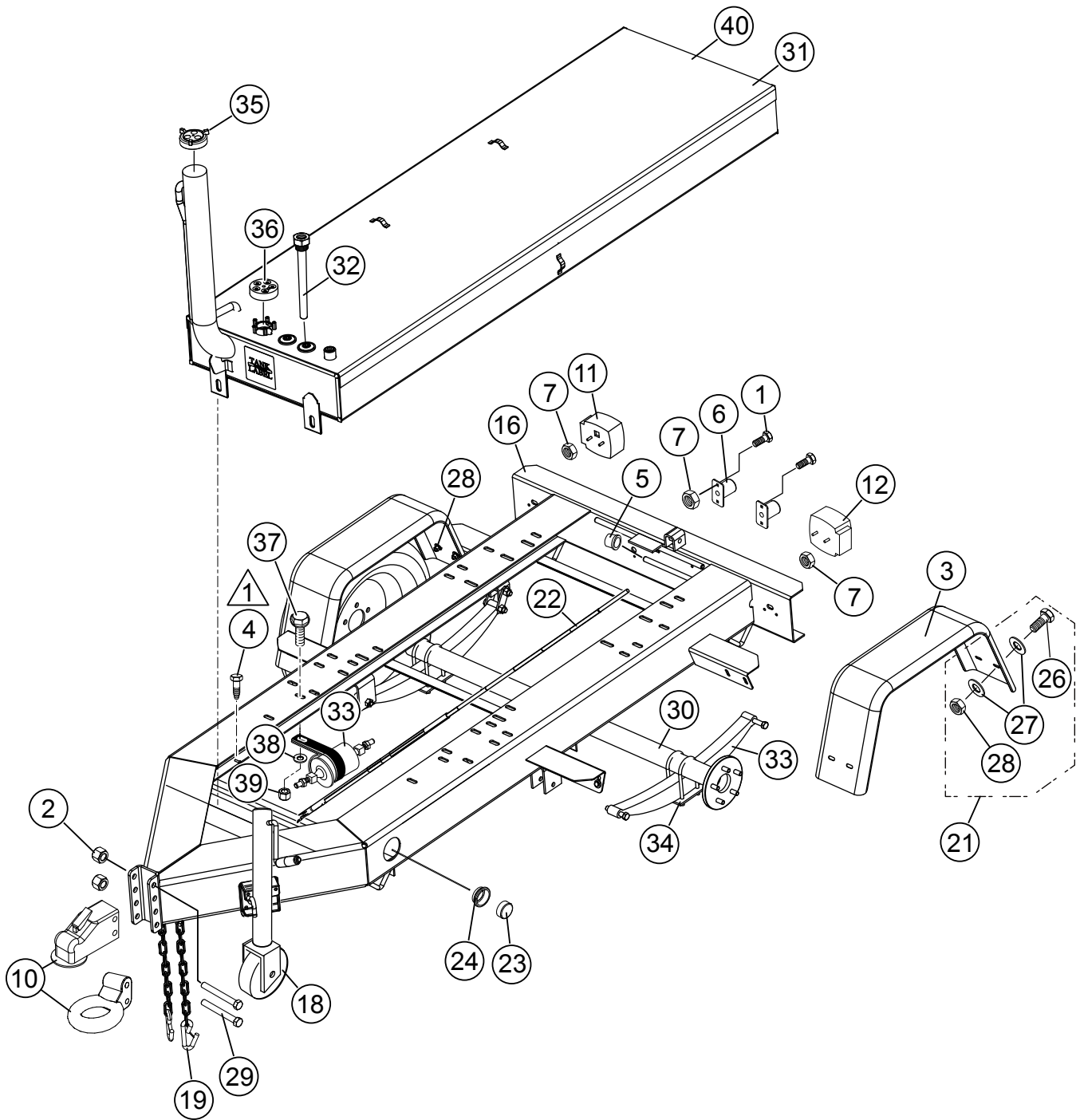


NOTES:
△ GROUND POINT

TRLR10W/TRLR10P TRAILER ASSY

<u>NO.</u>	<u>PART NO.</u>	<u>PART NAME</u>	<u>QTY.</u>	<u>REMARKS</u>
1	1273	SCREW, HHST 8-32 X 3/8"	2	
3\$	4001	WASHER, FLAT USS 3/8" PLD	16	
4	5065 B	SCREW, PHP 10-32 X 1/2"	4	
6	9500	FRAME	1	
7	9502	SCREW, HHC 5/8-11 X 4-1/2" GR8	2	
8	9503	NUT, NYLOC 5/8-11"	2	
9	9505	FENDER, 8" X 30" X 13", DRILLED	2	
11	9509	SCREW, TEK 12 X 3/4" SELF TAP	1	
12	9512	INSULATOR, WIRING .50 DIA	8	
13	9514	LIGHT ASSY, LICENSE PLATE	2	
14	10019	NUT, NYLOC 10-32	4	
15\$	10133	NUT, NYLOC 3/8-16	8	
17	29158	REFLECTOR, AMBER	2	
18	29228	COUPLER, 2" BALL, ADJUSTABLE, 6000 LBS.	1	
18	EE43254	COUPLER, 2" BALL, ADJUSTABLE, 10,000 LBS.	1	OPTIONAL
18	EE43253	COUPLER, 2-5/16" BALL, ADJUSTABLE, 14,000 LBS.	1	OPTIONAL
18	EE36264	COUPLER, 3" PINTLE EYE, 20,000 LBS.	1	OPTIONAL
19	29242	LIGHT, TAIL (CURB) SIDE	1	
20	29243	LIGHT, TAIL (ROAD) SIDE	2	
23	29496	JACK, SIDEWIND 10", BOLT THRU, .5 PIN W/WHEEL	1	
24	29563	LIGHT, 2" ROUND AMBER	2	
25	29564	GROMMET, 2" ROUND	2	
26	29572	CHAIN ASSY, SAFETY 7600 LBS.	2	
27	29754	KIT, HARDWARE, FENDER MOUNT	1	INCLUDES ITEMS W/ \$
28	29784	HARNESS ASSY, TRLR, 48" LOOM	1	
30\$	0205	SCREW, HHC 3/8-16 X 1"	8	
31	9506	AXLE ASSY/SPRING ASSY, 2,000 LBS.	1	

TRLRMP/TRLRMPXF TRAILER ASSY



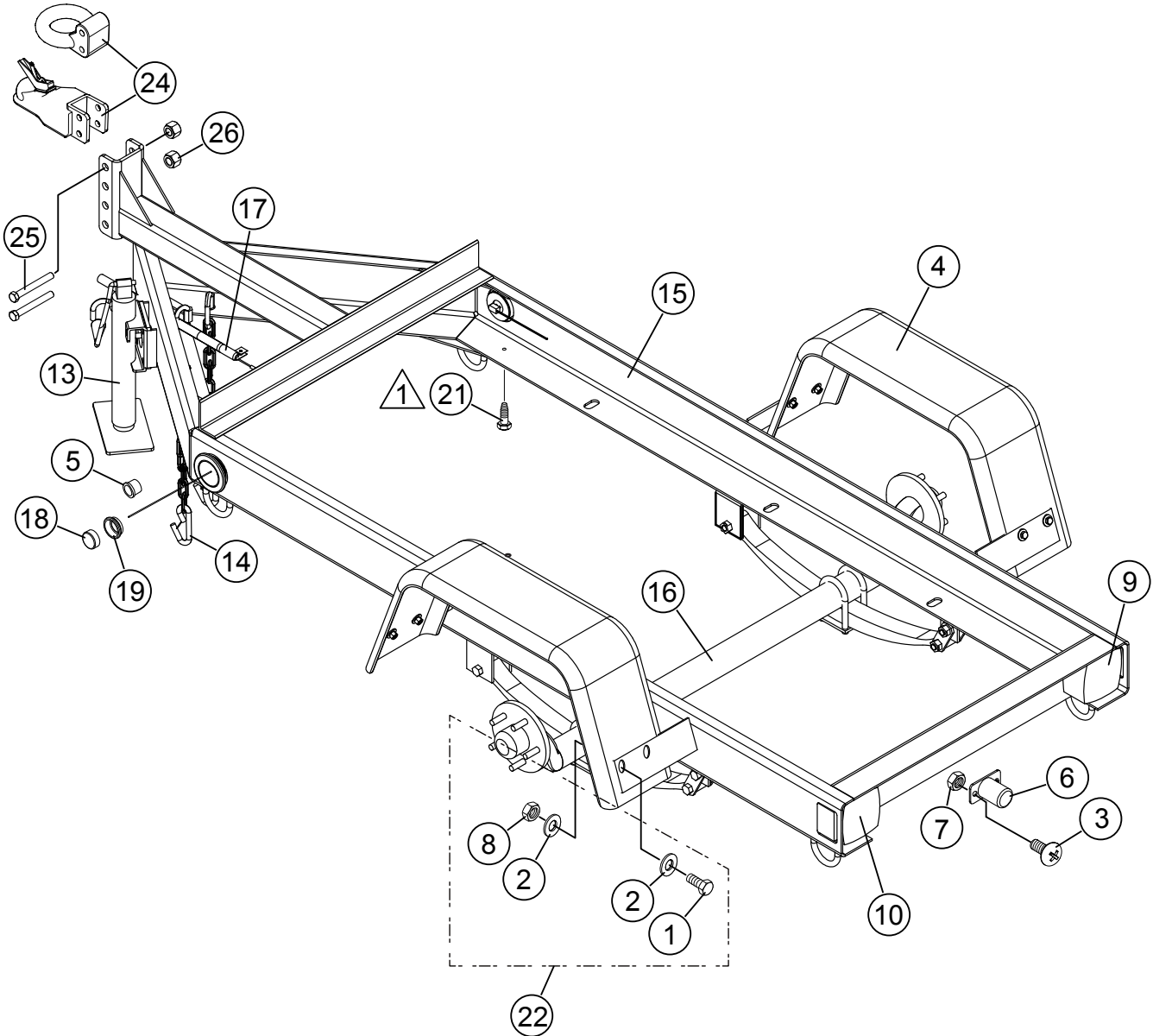
NOTES:

△ 1 GROUND POINT

TRLRMP/TRLRMPXF TRAILER ASSY

<u>NO.</u>	<u>PART NO.</u>	<u>PART NAME</u>	<u>QTY.</u>	<u>REMARKS</u>
1	5065 B	SCREW, PHP 10-32 X 1/2"	4	
2	9503	NUT, NYLOC 5/8-11"	2	
3	9505	FENDER, 8" X 30" X 13," DRILLED	2	
4	9509	SCREW, TEK 12 x 3/4" SELF TAP	3	
5	9512	INSULATOR, WIRING .50 DIA	7	
6	9514	LIGHT ASSY, LICENSE PLATE	2	
7	10019	NUT, NYLOC 10-32	4	
10	29228	COUPLER, 2" BALL, ADJUSTABLE, 6,000 LBS.	1	
10	EE43254	COUPLER, 2" BALL, ADJUSTABLE, 10,000 LBS.....	1	OPTIONAL
10	EE43253	COUPLER, 2-5/16" BALL, ADJUSTABLE, 14,000 LBS.....	1	OPTIONAL
10	EE36264	COUPLER, 3" PINTLE EYE, 20,000 LBS.....	1	OPTIONAL
11	29242	LIGHT, TAIL (CURB) SIDE	1	
12	29243	LIGHT, TAIL (ROAD) SIDE	1	
16	29370	FRAME	1	
18	29496	JACK, SIDEWIND 10", BOLT THRU, .5 PIN W/ WHEEL	1	
19	29572	CHAIN ASM, SAFETY 7,600 LBS.	2	
21	29754	KIT, HARDWARE, FENDER MOUNT	1	INCLUDES ITEMS W/#
22	29784	HARNESS ASSY, TRLR, 48" LOOM	1	
23	29898	LIGHT, 2-1/2" SIDE MARKER, AMBER	2	
24	29900	GROMMET W/ WIRE KIT, 2-1/2"	2	
26#	0205	SCREW, HHC 3/8-16 X 1.0"	8	
27#	4001	WASHER	16	
28#	10133	NUT, NYLOC 3/8-16	8	
29	9502	SCREW, HHC 5/8-11 X 4-1/2 GR8	2	
30	29381	AXLE ASSY, 3,500 LBS.	1	
31	EE55144	FUEL TANK, 28 GAL	1	
32	EE53541	ASSY, TUBE, FUEL DOWN, 5-1/2" LONG	1	
33	EE53069	FUEL PUMP, ELECTRIC (FACET)	1	
35	7V3177002	CAP, 2" VENTED GAS	1	
36	EE58784	GAUGE, 5.20" MECHANICAL FUE, 28GAL	1	
37		BOLT, 5/16-18 X 1"	1	OBTAIN LOCALLY
38		WASHER, FLAT FENDER, 5/16"	1	OBTAIN LOCALLY
39		NUT, 5/16-18.....	1	OBTAIN LOCALLY
40	19029	FUEL TANK, 16 GAL	1	TRLRMP16FP

TRLR25US TRAILER ASSY



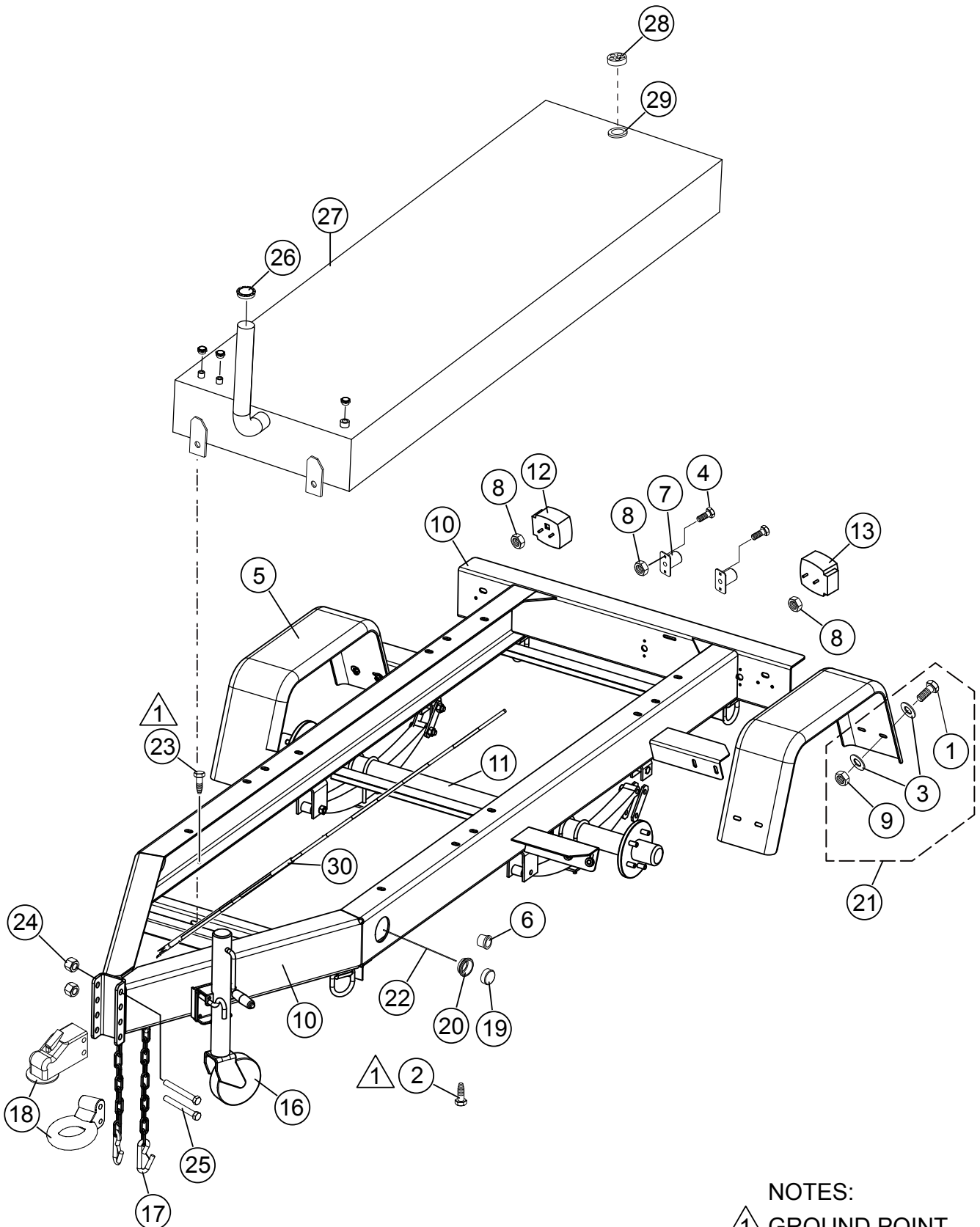
NOTES:

△ 1 GROUND POINT

TRLR25US TRAILER ASSY

<u>NO.</u>	<u>PART NO.</u>	<u>PART NAME</u>	<u>QTY.</u>	<u>REMARKS</u>
1#	0205	SCREW, HHC 3/8-16 X 1.0"	8	
2#	4001	WASHER, FLAT USS 3/8 PLD	16	
3	5065 B	SCREW, PHP 10-32 X 1/2"	2	
4	9505	FENDER, 8" X 30" X 13"	2	
5	9512	INSULATOR, WIRING .50 DIA	8	
6	9514	LIGHT ASSY, LICENSE PLATE	1	
7	10019	NUT, NYLOC 10-32"	2	
8#	10133	NUT, NYLOC 3/8-16"	8	
9	29242	LIGHT, TAIL RT (CURB) SIDE	1	
10	29243	LIGHT, TAIL LH (ROAD) SIDE	1	
13	29478	JACK, TOPWIND 10" BOLT-THRU .5 PIN	1	
14	29572	CHAIN ASM, SAFETY 7,600 LBS.	2	
15	29618	FRAME	1	
16	29621	AXLE ASSY, 3,500 LBS. DROP	1	
17	29784	HARNESS ASSY, TRLR, 48" LOOM	1	
18	29898	LIGHT, 2-1/2" SIDE MARKER, AMBER	2	
19	29900	GROMMET W/ WIRE KIT, 2-1/2"	2	
21	9509	SCREW, TEK 12 X 3/4" SELF TAP	3	
22	29754	KIT, HARDWARE FENDER MOUNT	1	INCLUDES ITEMS W/#
24	29228	COUPLER, 2" BALL, ADJUSTABLE, 6,000 LBS.	1	
24	EE43254	COUPLER, 2" BALL, ADJUSTABLE, 10,000 LBS.	1	OPTIONAL
24	EE43253	COUPLER, 2-5/16" BALL, ADJUSTABLE, 14,000 LBS.	1	OPTIONAL
24	EE36264	COUPLER, 3" PINTLE EYE, 20,000 LBS.	1	OPTIONAL
25	9502	SCREW, HHC 5/8-11 X 4-1/2" GR8	2	
26	9503	NUT, NYLOC 5/8-11"	2	

TRLR50W/TRLR50XF TRAILER ASSY

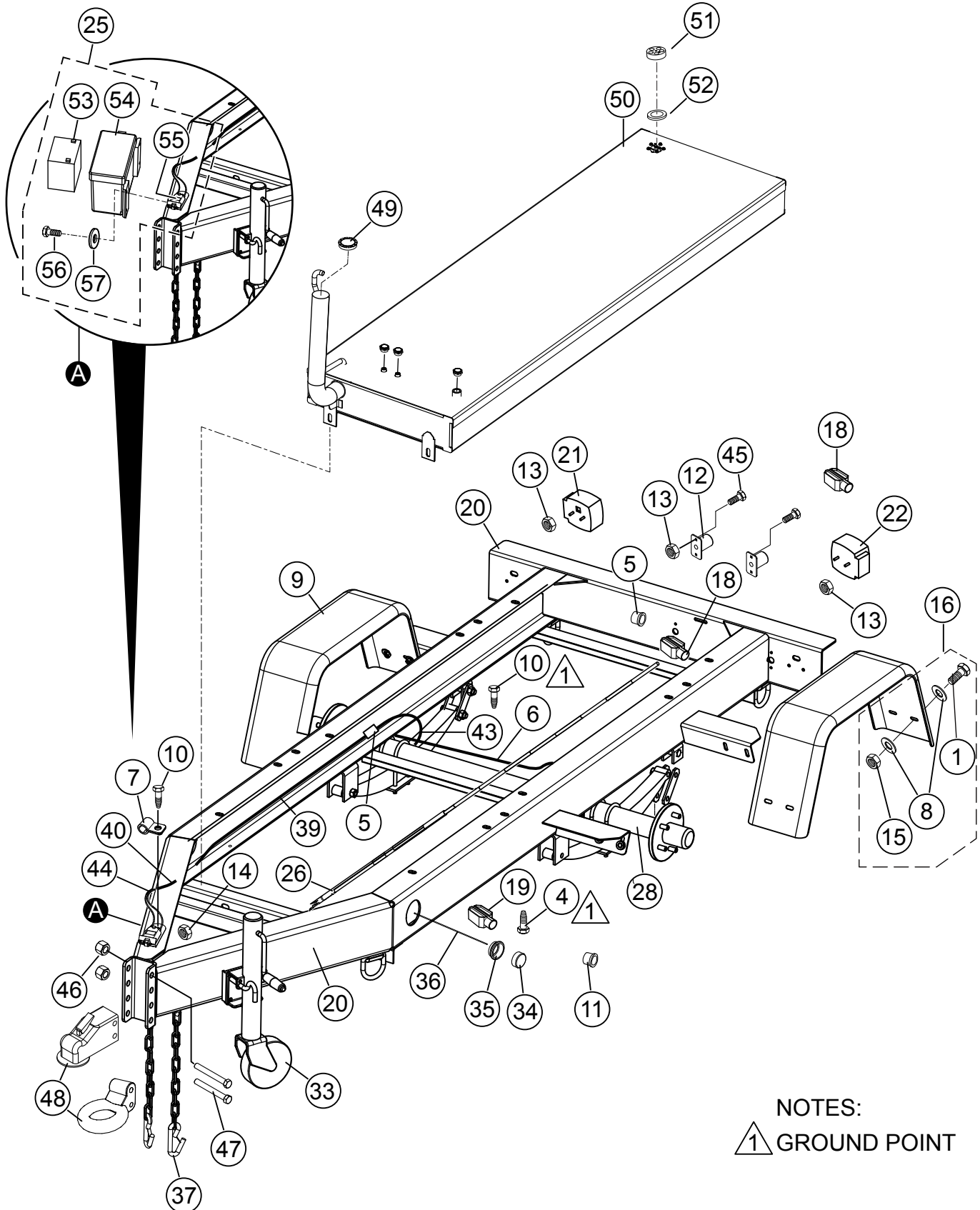


NOTES:
△ GROUND POINT

TRLR50W/TRLR50XF TRAILER ASSY

<u>NO.</u>	<u>PART NO.</u>	<u>PART NAME</u>	<u>QTY.</u>	<u>REMARKS</u>
1#	0205	SCREW, HHC 3/8-16 X 1.0"	8	
2	1273	SCREW, HHST 8-32 X 3/8"	2	
3#	4001	WASHER, FLAT USS 3/8 PLD	16	
4	5065 B	SCREW, PHP 10-32 X 1/2"	4	
5	9505	FENDER, 8" X 30" X 13"	2	
6	9512	INSULATOR, WIRING .50 DIA	8	
7	9514	LIGHT ASM, LICENSE PLATE	2	
8	10019	NUT, NYLOC 10-32"	8	
9#	10133	NUT, NYLOC 3/8-16"	8	
10	19043	FRAME	1	
11	19047	AXLE/SPRING ASSY., 3,500 LBS.	1	
12	29242	LIGHT, TAIL (CURB) SIDE	1	
13	29243	LIGHT, TAIL (ROAD) SIDE	1	
16	29496	JACK, SIDEWIND 10", BOLT THRU, .5 PIN W/ WHEEL	1	
17	29572	CHAIN ASM, SAFETY 7,600 LBS.	2	
18	29228	COUPLER, 2" BALL, ADJUSTABLE, 6,000 LBS.....	1	OPTIONAL
18	EE43254	COUPLER, 2" BALL, ADJUSTABLE, 10,000 LBS.....	1	OPTIONAL
18	EE43253	COUPLER, 2-5/16" BALL, ADJUSTABLE, 14,000 LBS.....	1	OPTIONAL
18	EE36264	COUPLER, 3" PINTLE EYE, 20,000 LBS.....	1	OPTIONAL
19	29898	LIGHT, 2-1/2" SIDE MARKER, AMBER	2	
20	29900	GROMMET W/WIRE KIT, 2-1/2", 14218K	2	
21	29754	KIT, HARDWARE, FENDER MOUNT	1	INCLUDES ITEMS W/#
23	9509	SCREW, TEK 12 X 3/4" SELF TAP	1	
24	9503	NUT, NYLOC 5/8-11"	2	
25	9502	SCREW, HHC 5/8-11 X 4-1/2" GR8	2	
26	7V3177002	CAP, 2" FUEL TANK	1	
27	EE52009	FUEL TANK, 41GAL.	1	
28	030OB12407	FUEL SENDING UNIT 2-5/8" SU 5.25"	1	
29	EE56758	GASKET, 2-5/8" SENDING UNIT	1	
30	29784	HARNES, 48" LOOM	1	

TRLR50WE/TRLR50XFE TRAILER ASSY

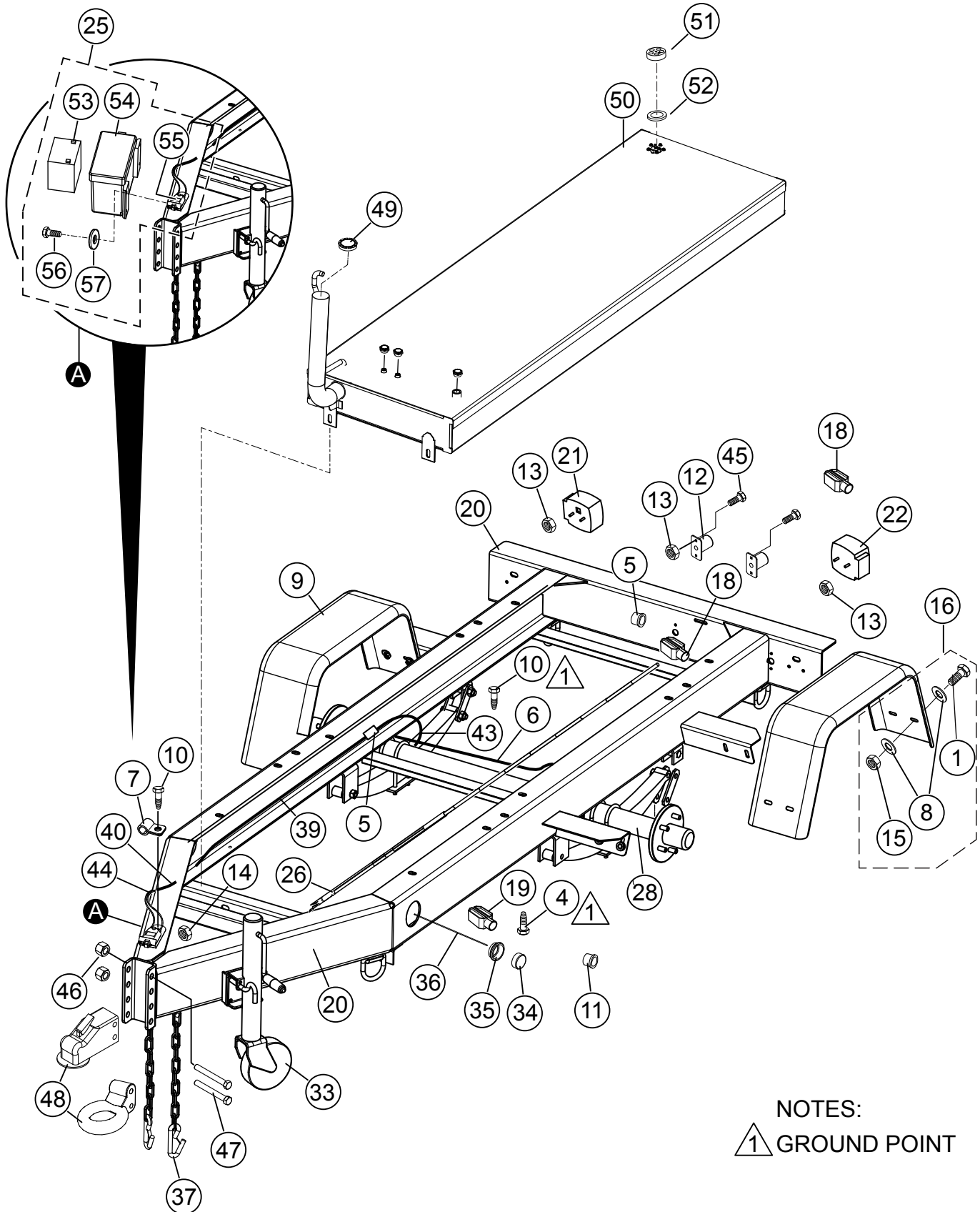


NOTES:
▲ 1 GROUND POINT

TRLR50WE/TRLR50XFE TRAILER ASSY

<u>NO.</u>	<u>PART NO.</u>	<u>PART NAME</u>	<u>QTY.</u>	<u>REMARKS</u>
1#	0205	SCREW, HHC 3/8-16 X 1"	8	
2	0730	SCREW, HHC 1/4-20 X 1"	4	
3	0948	WASHER, FLAT, 1/4 SAE	4	
4	1273	SCREW, HHST 8-32 X 3/8"	2	
5	1319	TERMINAL, 1/4 RING 16-14, INSUL.	3	
6	2540	BUTT CONNECTION, WIRE	7	
7	2548	CLAMP, CABLE, DEL CITY #2904	1	
8#	4001	WASHER, FLAT 3/8 PLTD STD. USS	16	
9	9505	FENDER 8" X 30" X13", DRILLED	2	
10	9509	SCREW, TEK 12 X 3/4" SELF TAP	2	
11	9512	PLUG, WIRING 1/2"	10	
12	9514	LITE, LICENSE PETERSEN 435	2	
13	10019	NUT, NYLOC 10-32"	4	
14	10024	NUT, NYLOC 1/4-20"	4	
15#	10133	NUT, NYLOC 3/8-16"	8	
16	29754	KIT, HARDWARE, FENDER MTG.	1	INCLUDES ITEMS W/#
18	19761	TAP, SPLICE 14-18GA CLOSED (BLUE)	6	
19	19762	TAP, SPLICE 14-18GA OPEN (BROWN)	1	
20	29148	FRAME ASSY	1	
21	29242	LIGHT, TAIL (CURB) SIDE`	1	
22	29243	LIGHT, TAIL (ROAD) SIDE	1	
25	29366	KIT, BREAK AWAY	1	INCLUDES ITEMS W/\$
26	29367	PLUG/SPRING, 6 POLE TRAILER	1	
28	29463	AXLE ASSY/SPRING ASSY., 3500LBS W/ELEC. BRAKES	1	
33	29496	JACK, SIDEWIND 10" BLT - THRU, .5 PIN, W/ WHEEL	1	
34	29563	LIGHT, 2" ROUND AMBER	2	
35	29560	GROMMET, 2" RD LIGHT	2	
36	29565	HARNESS, 2 POLE	2	
37	29572	CHAIN ASSY, SAFETY, 7600LBS	2	
39	60018	WIRE, 16GA BROWN, SAEJ1128, 4.5L.....	5	1PC = 1FT
40	60037	LOOM, 5/8 DIA HI TEMP BLK	2	

TRLR50WE/TRLR50XFE TRAILER ASSY

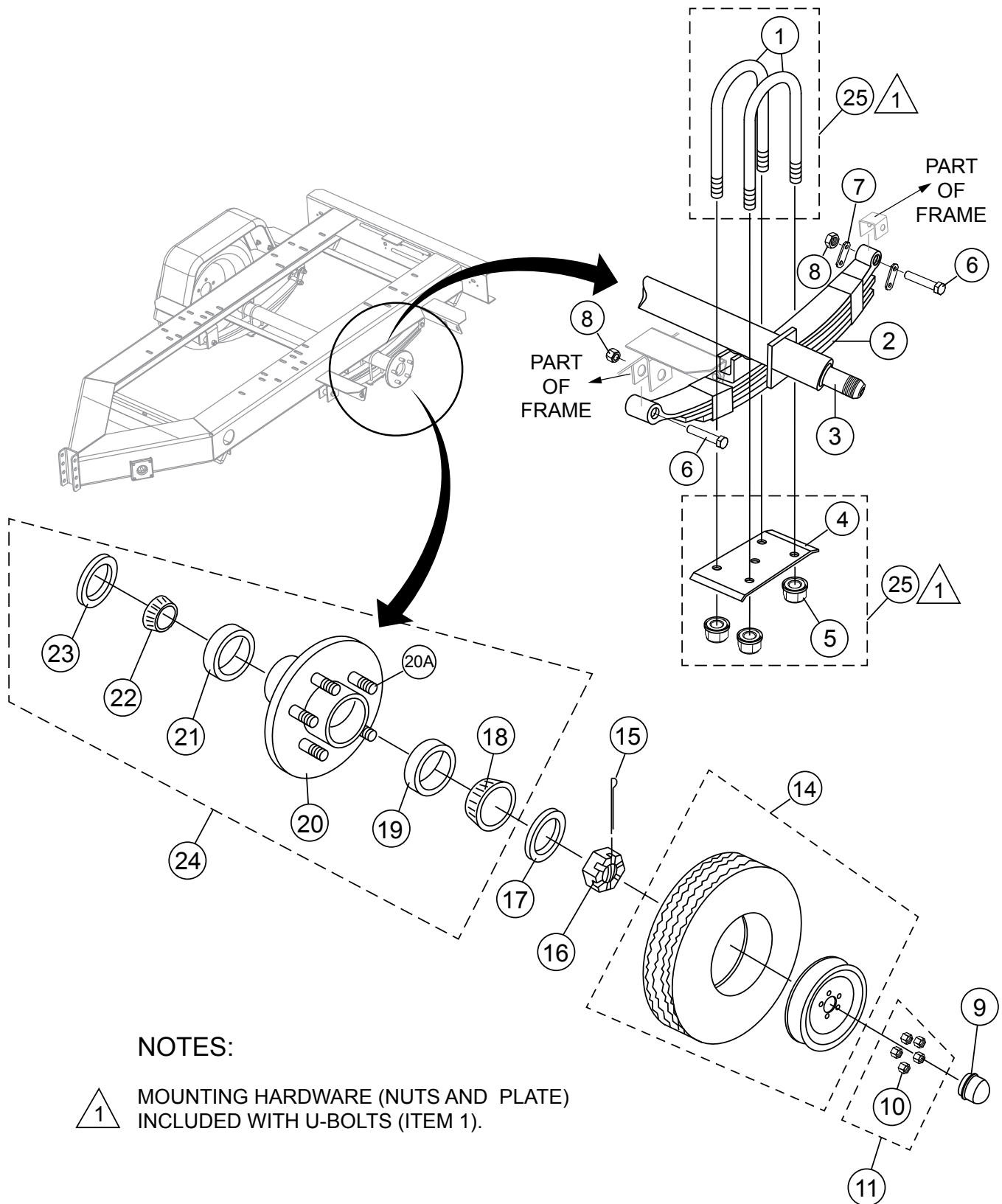


NOTES:
 ▲ GROUND POINT

TRLR50WE/TRLR50XFE TRAILER ASSY

<u>NO.</u>	<u>PART NO.</u>	<u>PART NAME</u>	<u>QTY.</u>	<u>REMARKS</u>
41	60043	WIRE, 16GA GREEN, SAE J1128	4	
42	60101	TIE, SELF LOCKING	6	
43	60221	LOOM 375 SPLIT	2	
44	60257	WIRE, 14GA 6 COND, 17.5L.....	18.....	1PC=1FT
45	5065 B	SCREW, RHM 10-32 X 1/2"	4	
46	9503	NUT, NYLOC 5/8-11	2	
47	9502	SCREW, HHC 5/8-11X4-1/2" GR8	2	
48	29228	COUPLER, 2" BALL, ADJUSTABLE, 6,000 LBS.	1	
48	EE43254	COUPLER, 2" BALL, ADJUSTABLE, 10,000 LBS.....	1.....	OPTIONAL
48	EE43253	COUPLER, 2-5/16" BALL, ADJUSTABLE, 14,000 LBS.....	1.....	OPTIONAL
48	EE36264	COUPLER, 3" PINTLE EYE, 20,000 LBS.....	1.....	OPTIONAL
49	7V3177002	CAP, 2" FUEL TANK	1	
50	EE52009	FUEL TANK, 41GAL.	1	
51	EE56759	FUEL SENDING UNIT 2-5/8" SU 5.25"	1	
52	EE56758	GASKET, 2-5/8" SENDING UNIT	1	
53\$	EE57140	BATTERY	1	
54\$	EE57141	BOX W/ LID	1	
55\$	EE43519	SWITCH	1	
56\$	0730	SCREW, HHC 1/4-20 X 1"	4	
57\$	0948	WASHER, FLAT, 1/4 SAE	4	

TRLR10P/10W-TRLRMP/MPXF/25US AXLE COMPONENTS



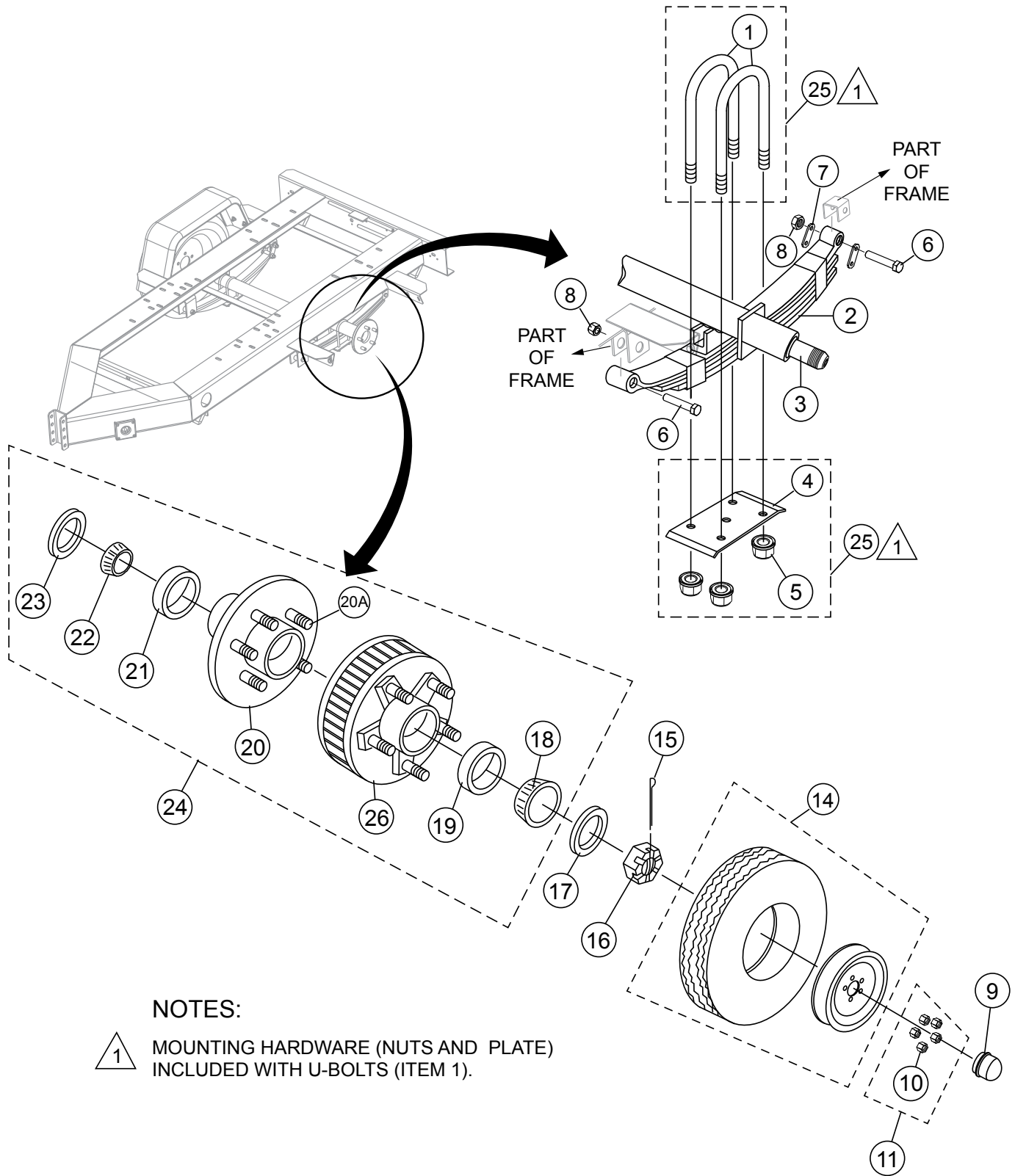
NOTES:

1 MOUNTING HARDWARE (NUTS AND PLATE) INCLUDED WITH U-BOLTS (ITEM 1).

TRLR10P/10W-TRLRMP/MPXF/25US AXLE COMPONENTS

<u>NO.</u>	<u>PART NO.</u>	<u>PART NAME</u>	<u>QTY.</u>	<u>REMARKS</u>
1#	U1741	U-BOLT	4.....	TRLR10P/TRLR10W
1#	U1105	U-BOLT	4.....	TRLRMP, TRLR25US
2	49017	SPRING, 4 LEAF, DOUBLE EYE, 3,500LBS.....	2.....	TRLR10P, TRLR10W
2	SW4B	SPRING, 4 LEAF, DOUBLE EYE.....	2.....	TRLRMP, TRLR25US
3	ST204327-BT	AXLE BEAM ONLY	1.....	TRLR10P, TRLR10W
3	DT35XX-84XL	AXLE BEAM ONLY	1.....	TRLRMP
3	DT35XX-84FXL	AXLE BEAM ONLY	1.....	TRLR25US
4#	91207	TIE PLATE	2.....	TRLR10P
4#	2101	TIE PLATE	2.....	TRLRMP, TRLR25US
5#	UN4	NUT 3/8"	8.....	TRLR10P/TRLR10W
5#	UN2	NUT 1/-20	8.....	TRLRMP, TRLR25US
6	29248	SCREW, HHC 9/16-18 X 3" AXLE MTG.	4	
7	29247	SHACKLE, AXLE MOUNTING	8	
8	29249	NUT, 9/16-18" AXLE MOUNTING	4	
9	3469	DUST CAP	2	
10%	29194	LUG NUT, 1/2-20"	10	
11	29755	LUG NUT KIT.....	2.....	INCLUDES ITEMS W/%
14	19045	WHEEL/TIRE ST175-80-13 LR C X 4.5	2	
15	0183	COTTER PIN, 1/8"D x 1-1/4"	2	
16	1-14	SPINDLE NUT	2	
17	1W	SPINDLE WASHER, 1"	2	
18\$	L44649	INNER BEARING CONE, 1-1/16" I.D.	2	
19\$	L44610	OUTER BEARING CUP	2	
20\$		HUB ONLY	0.....	NOT SOLD SEPARATELY
20A\$	363907	WHEEL STUD, 1/2"	10	
21\$	L44610	OUTER BEARING CUP.....	2.....	TRLR10P/TRLR10W
21\$	L68111	OUTER BEARING CUP.....	2.....	TRLRMP, TRLR25US
22\$	L44649	INNER BEARING CONE, 1-1/16" I.D.....	2.....	TRLR10P, TRLR10W
22\$	L68149	INNER BEARING CONE, 1-3/8" I.D.....	2.....	TRLRMP, TRLR25US
23\$	10-60	X-TRA LUBE GREASE SEAL.....	2.....	TRLR10P/TRLR10W
23\$	58846	LUBE GREASE SEAL	2.....	TRLRMP, TRLR25US
24	IH545C9	LOADED HUB KIT	1.....	INCLUDES ITEMS W/\$
			TRLR10P/TRLR10W
24	IH54535C	LOADED HUB KIT	1.....	INCLUDES ITEMS W/\$
			TRLRMP/TRLR25US
25	UBK1741	U-BOLT KIT.....	1.....	INCLUDES ITEMS W/#
			TRLR10P/TRLR10W
25	UBK-255	U-BOLT KIT.....	1.....	INCLUDES ITEMS W/#
			TRLRMP, TRLR25US

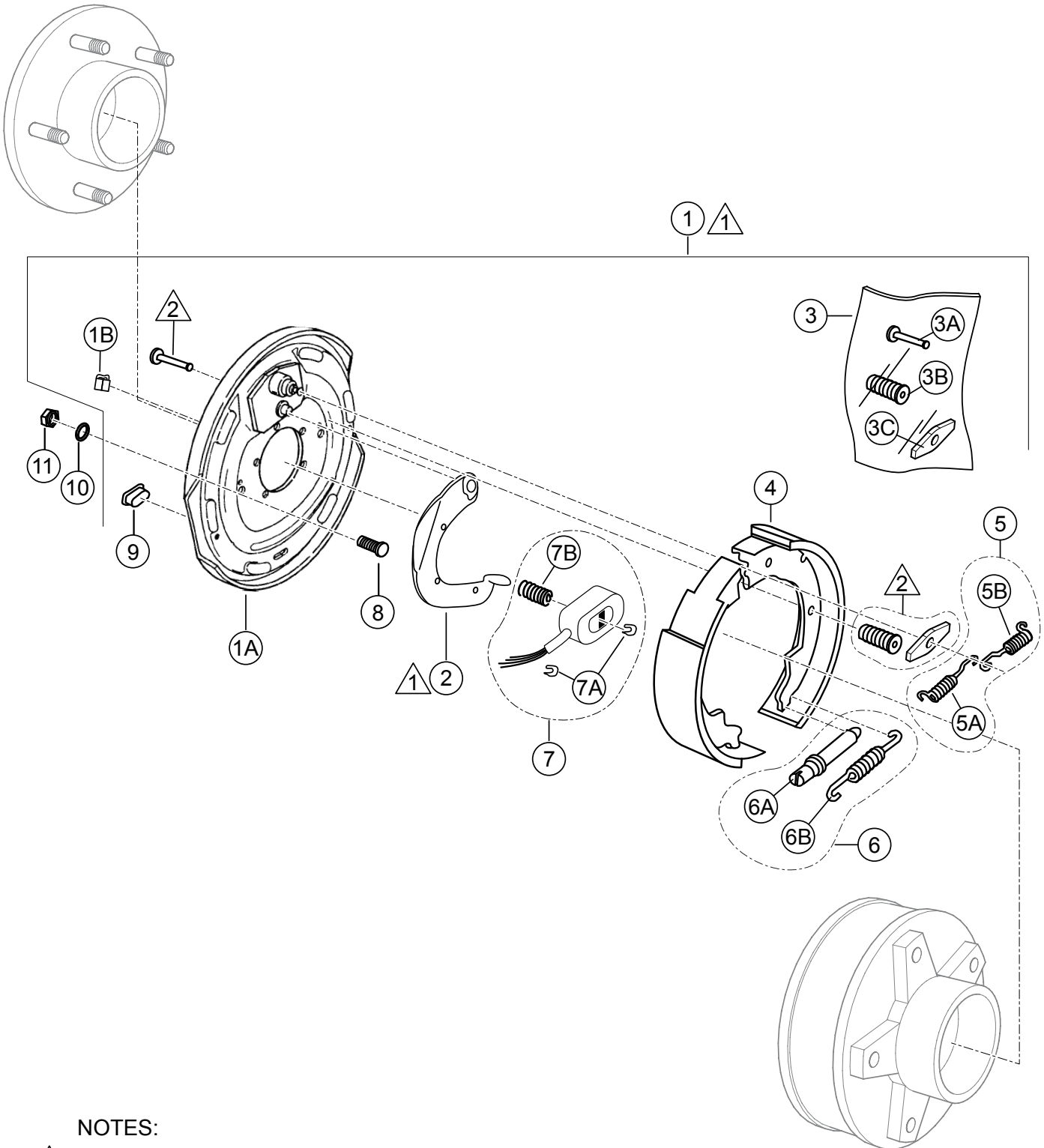
TRLR50WE/TRLR50XF/TRLR50XFE AXLE COMPONENTS



TRLR50WE/TRLR50XF/TRLR50XFE AXLE COMPONENTS

<u>NO.</u>	<u>PART NO.</u>	<u>PART NAME</u>	<u>QTY.</u>	<u>REMARKS</u>
1#	U1105	U-BOLT	4	
2	SW4B	SPRING, 4 LEAF, DOUBLE EYE	2	
3	DT35XX-84	AXLE BEAM ONLY	1	
4#	2101	TIE PLATE	2	
5#	UN2	NUT	8	
6	29248	SCREW, HHC 9/16-18"	6	
7	29704	SHACKLE, AXLE MOUNTING	4	
8	29249	NUT, 9/16-18" AXLE MOUNTING	6	
9	3469	DUST CAP	2	
10%	29194	LUG NUT, 1/2-20"	10	
11	29755	LUG NUT KIT.....	1	INCLUDES ITEMS W/%
14	EE45318	WHEEL ASSY., ST175/80 D13, LD RATE "C"	2	
15	0183	COTTER PIN, 1/8"D x 1-1/4"	2	
16	1-14	SPINDLE NUT	2	
17	1W	SPINDLE WASHER, 1"	2	
18\$	L44649	OUTER BEARING CONE	2	
19\$	L44610	OUTER BEARING CUP	2	
20\$		HUB ONLY.....	2	NOT SOLD SEPARATELY
20A\$	363907	WHEEL STUD, 1/2"	10	
21\$	L68111	INNER BEARING CUP	2	
22\$	L68149	INNER BEARING CONE.	2	
23\$	58846	LUBE GREASE SEAL	2	
24	IH54535C	LOADED HUB KIT.....	1	INCLUDES ITEMS W/\$
25	UBK-255	U-BOLT KIT.....	1	INCLUDES ITEMS W/#
26	1H545-17	HUB W/ STUDS & CUPS	2	

10-INCH ELECTRIC BRAKE ASSY



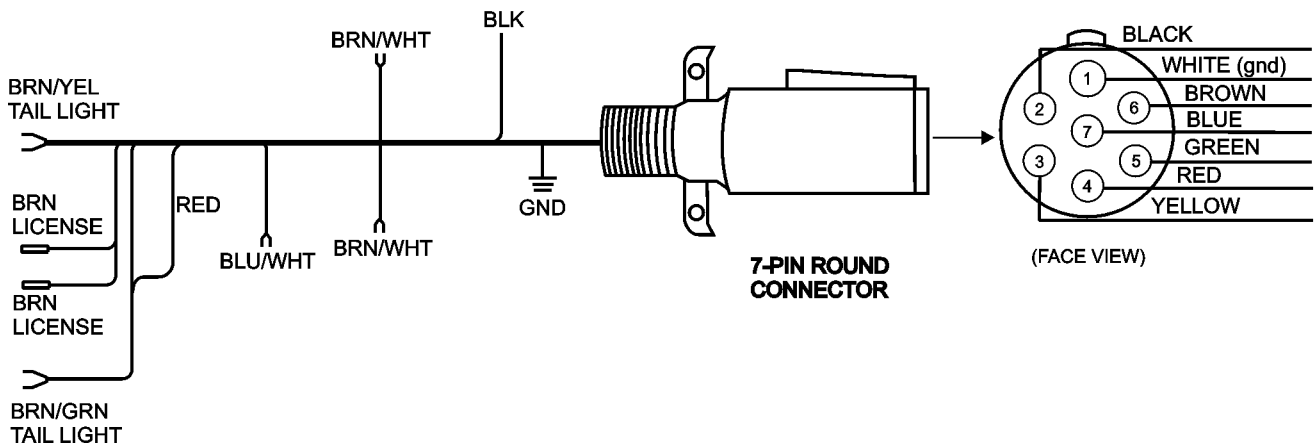
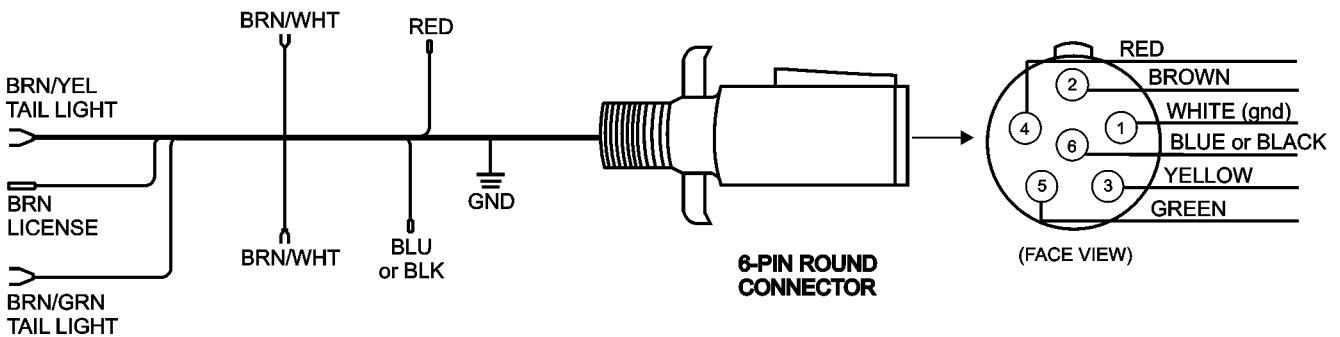
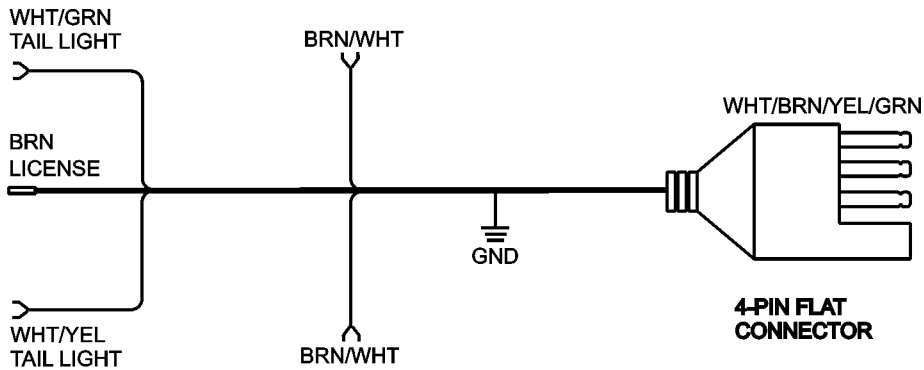
NOTES:

- ① LEFT SIDE AND RIGHT SIDE LOADED BACKING PLATE OPTION.
- ② SUPPLIED WITH HOLD DOWN SPRING KIT ONLY, ITEM 3.

10-INCH ELECTRIC BRAKE ASSY

<u>NO.</u>	<u>PART NO.</u>	<u>PART NAME</u>	<u>QTY.</u>	<u>REMARKS</u>
1	6205	LOADED BACKING PLATE ASSY., RH.....	1.....	INCLUDES ITEMS W/\$
1	6206	LOADED BACKING PLATE ASSY., LH	1.....	INCLUDES ITEMS W/◆
1A\$◆		BACKING PLATE.....	1.....	MUST PURCHASE ITEM 1
1B\$◆		CLIP, BACKING PLATE HOLD DOWN	1.....	MUST PURCHASE ITEM 1
2\$	T6205	ACTUATING ARM RH	1	
2◆	T6206	ACTUATING ARM LH	1	
3\$◆	T5353	HOLD DOWN SPRING KIT	1.....	INCLUDES ITEMS W/%
3A\$◆%		HOLD DOWN PIN.....	1.....	MUST PURCHASE ITEM 3
3B\$◆%		HOLD DOWN SPRING.....	1.....	MUST PURCHASE ITEM 3
3C\$◆%		SHOE GUIDE PLATE	1.....	MUST PURCHASE ITEM 3
4\$◆	T6004	BRAKE SHOE KIT	1	
5\$◆	T5304	RETURN SPRING KIT.....	1.....	INCLUDES ITEMS W/#
5A\$◆#		RETURN SPRING	1.....	MUST PURCHASE ITEM 5
5B\$◆#		RETURN SPRING	1.....	MUST PURCHASE ITEM 5
6\$◆	T5404	ADJUSTER KIT	1.....	INCLUDES ITEMS W/@
6A\$◆@		ADJUSTER SCREW ASSY	1.....	MUST PURCHASE ITEM 6
6B\$◆@		SPRING, ADJUSTER SCREW.....	1.....	MUST PURCHASE ITEM 6
7\$◆	T6106	MAGNETIC SOLENOID KIT.....	1.....	INCLUDES ITEMS W/&
7A\$◆&		HOLD DOWN CLIP.....	2.....	MUST PURCHASE ITEM 7
7B\$◆&		SPRING, MAGNETIC SOLENOID.....	1.....	MUST PURCHASE ITEM 7
8	B1716	BOLT	1	
9\$◆	568089	PLUG	1	
10	2955	WASHER	1	
11	UN3	NUT	1	

TRAILER WIRING CONNECTIONS



TERMS AND CONDITIONS OF SALE — PARTS

PAYMENT TERMS

Terms of payment for parts are net 30 days.

FREIGHT POLICY

All parts orders will be shipped collect or prepaid with the charges added to the invoice. All shipments are F.O.B. point of origin. Multiquip's responsibility ceases when a signed manifest has been obtained from the carrier, and any claim for shortage or damage must be settled between the consignee and the carrier.

MINIMUM ORDER

The minimum charge for orders from Multiquip is \$15.00 net. Customers will be asked for instructions regarding handling of orders not meeting this requirement.

RETURNED GOODS POLICY

Return shipments will be accepted and credit will be allowed, subject to the following provisions:

1. A Returned Material Authorization must be approved by Multiquip prior to shipment.
2. To obtain a Return Material Authorization, a list must be provided to Multiquip Parts Sales that defines item numbers, quantities, and descriptions of the items to be returned.
 - a. The parts numbers and descriptions must match the current parts price list.
 - b. The list must be typed or computer generated.
 - c. The list must state the reason(s) for the return.
 - d. The list must reference the sales order(s) or invoice(s) under which the items were originally purchased.
 - e. The list must include the name and phone number of the person requesting the RMA.
3. A copy of the Return Material Authorization must accompany the return shipment.
4. Freight is at the sender's expense. All parts must be returned freight prepaid to Multiquip's designated receiving point.

5. Parts must be in new and resalable condition, in the original Multiquip package (if any), and with Multiquip part numbers clearly marked.
6. The following items are not returnable:
 - a. Obsolete parts. (If an item is in the price book and shows as being replaced by another item, it is obsolete.)
 - b. Any parts with a limited shelf life (such as gaskets, seals, "O" rings, and other rubber parts) that were purchased more than six months prior to the return date.
 - c. Any line item with an extended dealer net price of less than \$5.00.
 - d. Special order items.
 - e. Electrical components.
 - f. Paint, chemicals, and lubricants.
 - g. Decals and paper products.
 - h. Items purchased in kits.
7. The sender will be notified of any material received that is not acceptable.
8. Such material will be held for five working days from notification, pending instructions. If a reply is not received within five days, the material will be returned to the sender at his expense.
9. Credit on returned parts will be issued at dealer net price at time of the original purchase, less a 15% restocking charge.
10. In cases where an item is accepted, for which the original purchase document can not be determined, the price will be based on the list price that was effective twelve months prior to the RMA date.
11. Credit issued will be applied to future purchases only.

PRICING AND REBATES

Prices are subject to change without prior notice. Price changes are effective on a specific date and all orders received on or after that date will be billed at the revised price. Rebates for price declines and added charges for price increases will not be made for stock on hand at the time of any price change.

Multiquip reserves the right to quote and sell direct to Government agencies, and to Original Equipment Manufacturer accounts who use our products as integral parts of their own products.

SPECIAL EXPEDITING SERVICE

A \$35.00 surcharge will be added to the invoice for special handling including bus shipments, insured parcel post or in cases where Multiquip must personally deliver the parts to the carrier.

LIMITATIONS OF SELLER'S LIABILITY

Multiquip shall not be liable hereunder for damages in excess of the purchase price of the item with respect to which damages are claimed, and in no event shall Multiquip be liable for loss of profit or good will or for any other special, consequential or incidental damages.

LIMITATION OF WARRANTIES

No warranties, express or implied, are made in connection with the sale of parts or trade accessories nor as to any engine not manufactured by Multiquip. Such warranties made in connection with the sale of new, complete units are made exclusively by a statement of warranty packaged with such units, and Multiquip neither assumes nor authorizes any person to assume for it any other obligation or liability whatever in connection with the sale of its products. Apart from such written statement of warranty, there are no warranties, express, implied or statutory, which extend beyond the description of the products on the face hereof.

Effective: February 22, 2006

PARTS MANUAL

HERE'S HOW TO GET HELP

PLEASE HAVE THE MODEL AND SERIAL
NUMBER ON-HAND WHEN CALLING

UNITED STATES

Multiquip Corporate Office

18910 Wilmington Ave.
Carson, CA 90746
Contact: mq@multiquip.com

Tel. (800) 421-1244
Fax (310) 537-3927

Service Department

800-421-1244
310-537-3700

Fax: 310-537-4259

Technical Assistance

800-478-1244

Fax: 310-943-2238

MQ Parts Department

800-427-1244
310-537-3700

Fax: 800-672-7877
Fax: 310-637-3284

Warranty Department

800-421-1244
310-537-3700

Fax: 310-943-2249

CANADA

Multiquip

4110 Industriel Boul.
Laval, Quebec, Canada H7L 6V3
Contact: jmartin@multiquip.com

Tel: (450) 625-2244
Tel: (877) 963-4411
Fax: (450) 625-8664

UNITED KINGDOM

Multiquip (UK) Limited Head Office

Unit 2, Northpoint Industrial Estate,
Globe Lane,
Dukinfield, Cheshire SK16 4UJ
Contact: sales@multiquip.co.uk

Tel: 0161 339 2223
Fax: 0161 339 3226

© COPYRIGHT 2016, MULTIQUIP INC.

Multiquip Inc, the MQ logo are registered trademarks of Multiquip Inc. and may not be used, reproduced, or altered without written permission. All other trademarks are the property of their respective owners and used with permission.

This manual MUST accompany the equipment at all times. This manual is considered a permanent part of the equipment and should remain with the unit if resold.

The information and specifications included in this publication were in effect at the time of approval for printing. Illustrations, descriptions, references and technical data contained in this manual are for guidance only and may not be considered as binding. Multiquip Inc. reserves the right to discontinue or change specifications, design or the information published in this publication at any time without notice and without incurring any obligations.

Your Local Dealer is:

